

**From:** [Heather Sawdon](#)  
**To:** [Paul Javor](#)  
**Subject:** RE: Tuesday, April 12  
**Date:** Wednesday, April 13, 2016 9:11:47 AM

---

Thanks Paul,

Your funny about the door. I will send some info to you once I gather the info.

Thanks

Baa Maa Pii  
Heather Sawdon  
Natural Resources Coordinator  
Atikameksheng Anishnawbek  
25 Reserve Road  
Naughton, ON P0M 2M0  
705-692-3651 Ext. 220

---

**From:** Paul Javor [mailto:[Paul.Javor@greatersudbury.ca](mailto:Paul.Javor@greatersudbury.ca)]  
**Sent:** April-13-16 8:37 AM  
**To:** Heather Sawdon  
**Subject:** Re: Tuesday, April 12

Heather,

Thank you for arranging the opportunity to speak with the Chief and Council and yourself last night. We will develop a document that will set the stage for making positive changes in the health of our communities and look forward to working with Atikameksheng Anishnawbek throughout the process.

Attached you will find a copy of the presentation from last night and a link to the City webpage with additional Subwatershed Study information. Last night you mentioned some sampling that has been done at Atikameksheng Anishnawbek, if you are able to share the data that would really help the process. I do not need the data at this time but would like to know what has been sampled (parameters, locations and frequency).

Also, your instructions are quite clear about which door to enter, using google earth to locate the Band Office I got it in my head that the front door was where I wanted to enter.

Thank You

Paul

<http://www.greatersudbury.ca/living/lakes-facts/watershed-study-2016/>

>>> Heather Sawdon <[HSawdon@WLEN.com](mailto:HSawdon@WLEN.com)> 4/11/2016 11:33 AM >>>

Hi Paul,

I finally received an answer, can you please do your presentation tomorrow night April 12, at 6pm

We will be located in the Council Chambers which is located on the right side of the building, this is where you will enter.

Baa Maa Pii  
Heather Sawdon  
Natural Resources Coordinator  
Atikameksheng Anishnawbek  
25 Reserve Road  
Naughton, ON P0M 2M0  
705-692-3651 Ext. 220

# Watersheds 101 & Subwatershed Studies

Carl Jorgensen, General manager  
Conservation Sudbury  
&

Paul Javor P.Eng., Drainage Engineer  
Roads and Transportation  
City of Greater Sudbury

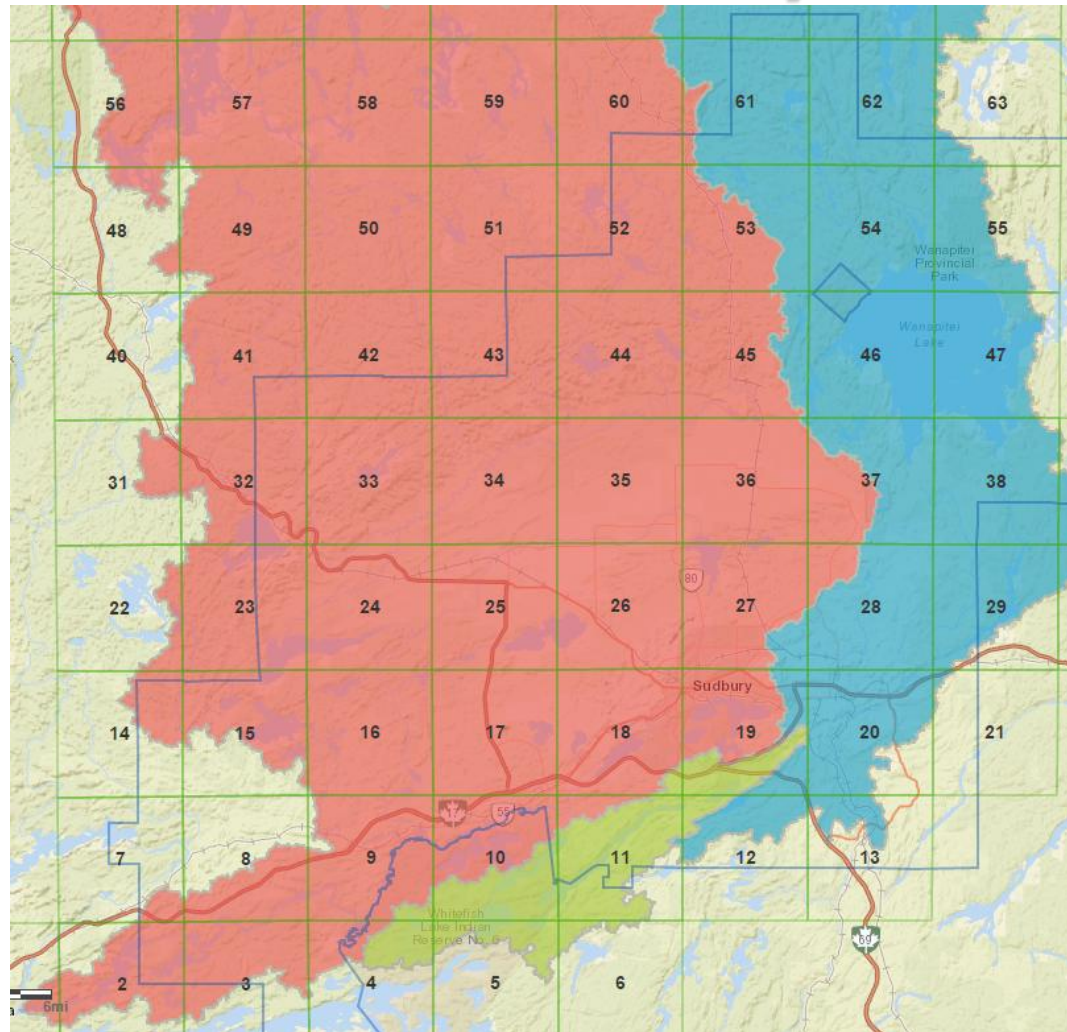
# What is a Watershed?

- ▶ the area of land that includes a particular river or lake and all the... streams, etc., that flow into it

*Merriam-Webster Dictionary, m-w.com*



# Conservation Sudbury



# Subwatersheds

- ▶ a portion of a watershed defined by the area of drainage of one particular stream or lake and all of the waters flowing to it
- ▶ e.g. the Richard Lake subwatershed is found entirely within the Whitefish River watershed





Navigation | Map Layers | **OFAT III** | Find Information | Markup and Printing



Create Watershed



Watershed Characterization



Hydrology Models



Flow Statistics



Find Watershed



Help



## Watershed Characterization

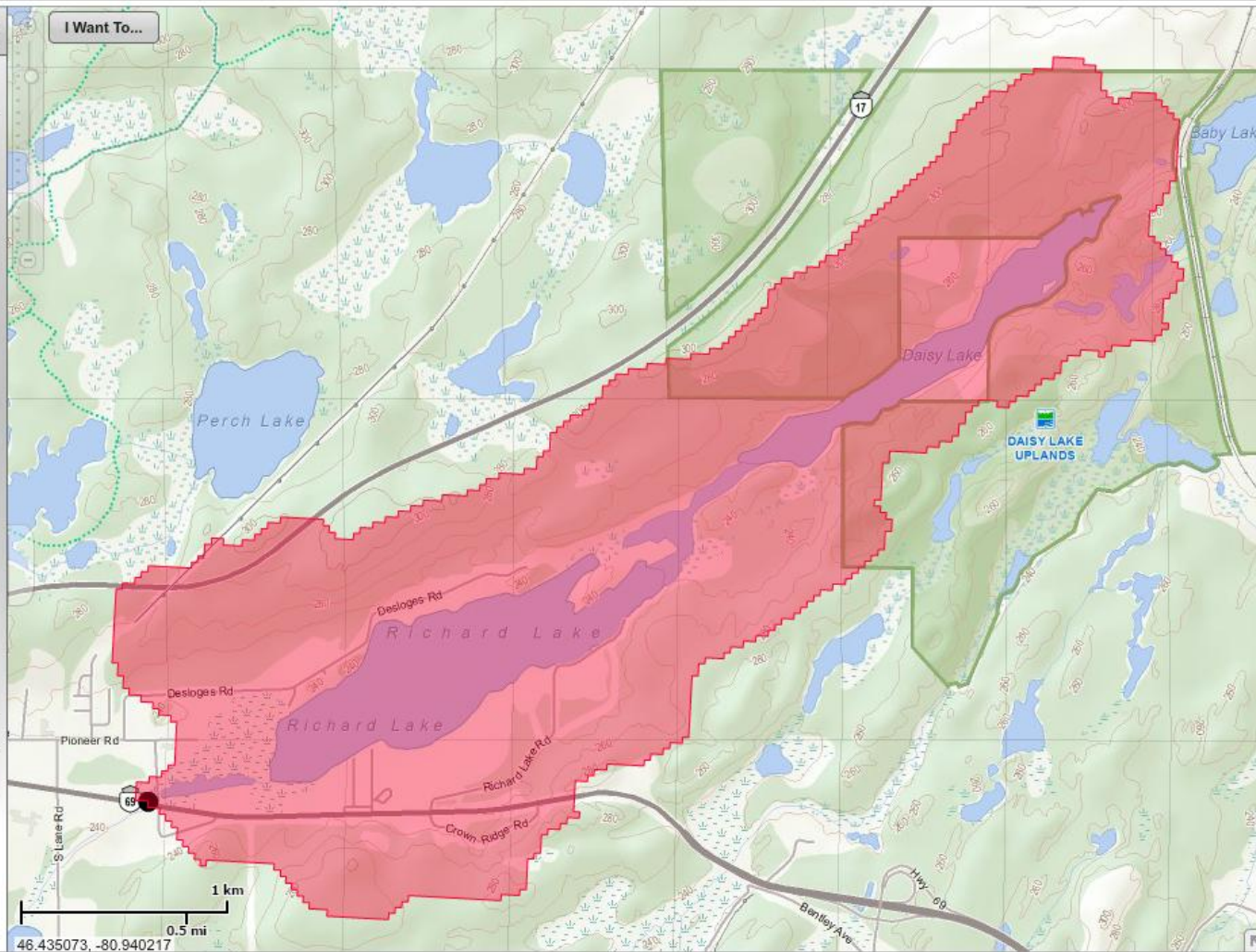
Characterizations | **Land Cover**

Drainage Area (km <sup>2</sup> )	8.193
Shape Factor ( )	5.877
Mean Elevation (m)	254.061
Maximum Elevation (m)	309.901
Mean Slope (%)	9.228
Length of Main Channel (km)	6.939
Maximum Channel Elevation (m)	305.310
Minimum Channel Elevation (m)	232.270
Slope of Main Channel (m/km)	10.530
Slope of Main Channel (%)	1.053
Annual Mean Temperature (°C)	4.600

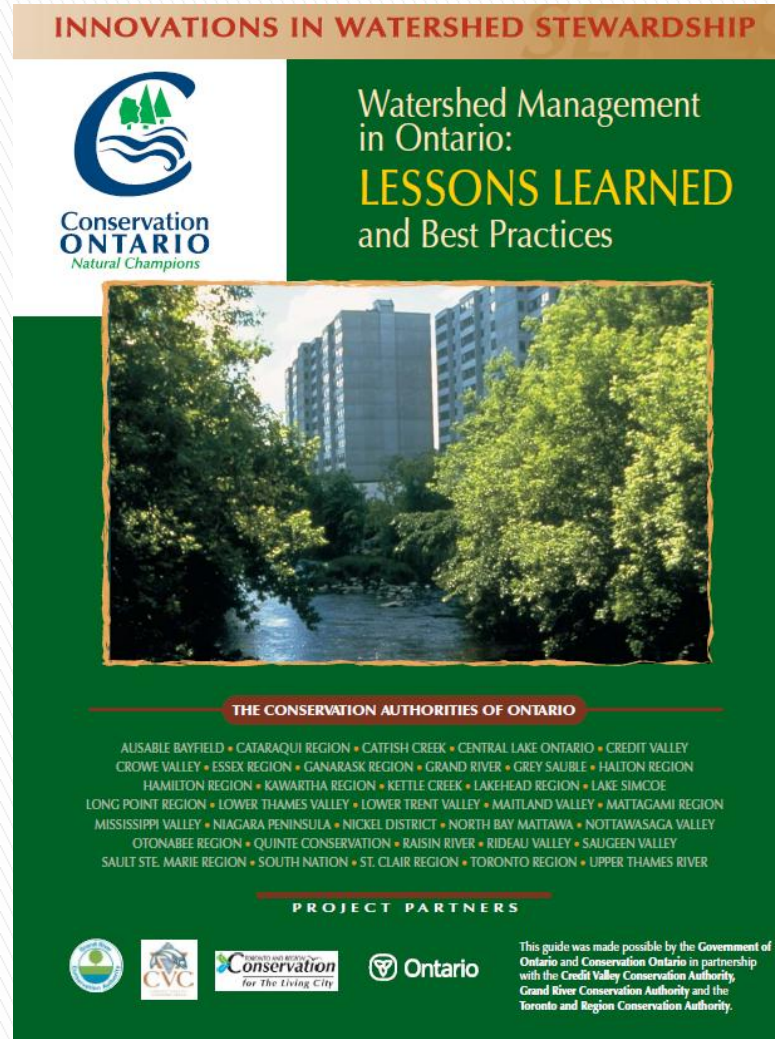
Calculate All

Watershed Name | On/Off | Delete | Export

Watershed 1 | ☒ |  | 



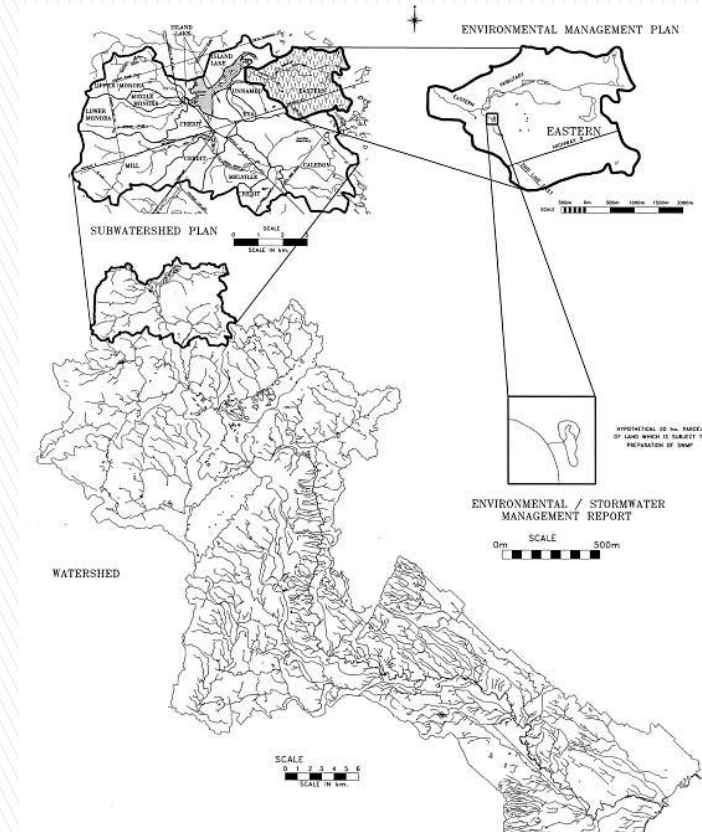
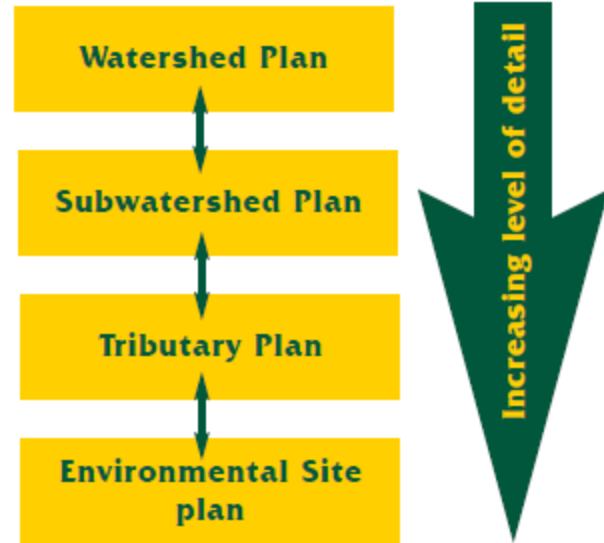
# Watershed Planning in Ontario



- ▶ Often undertaken by conservation authorities
- ▶ [http://www.conservationontario.ca/media/lessons\\_learned\\_best\\_practices.pdf](http://www.conservationontario.ca/media/lessons_learned_best_practices.pdf)



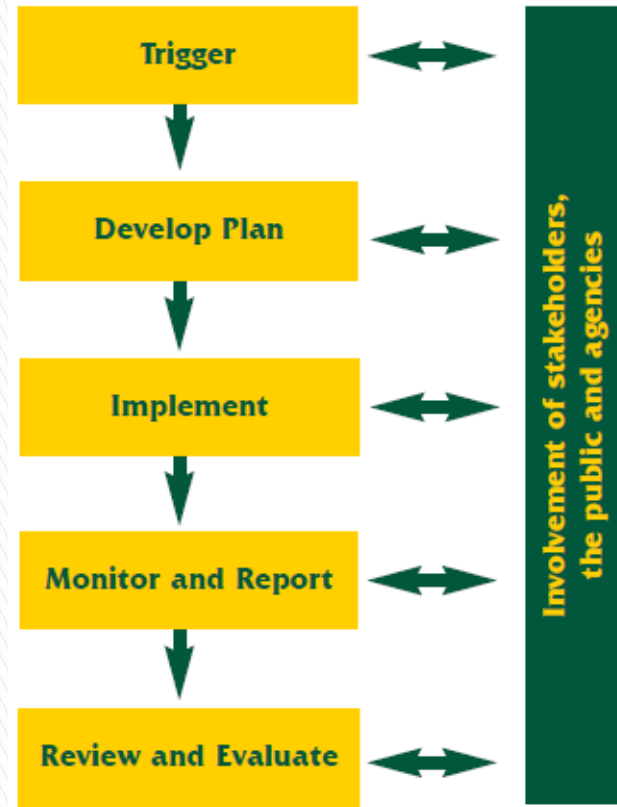
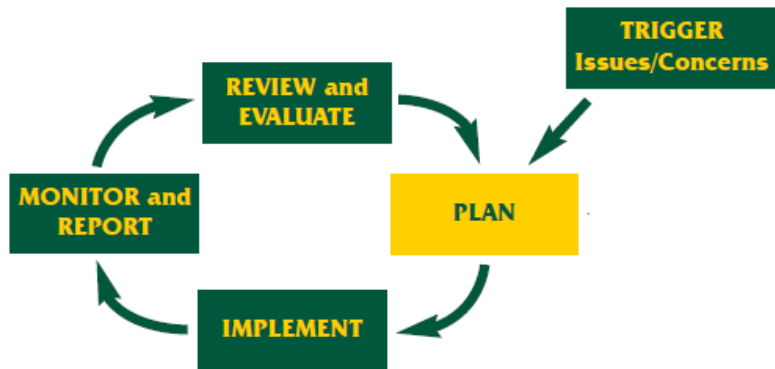
# Watershed Planning



Scales of planning

e.g. Credit River

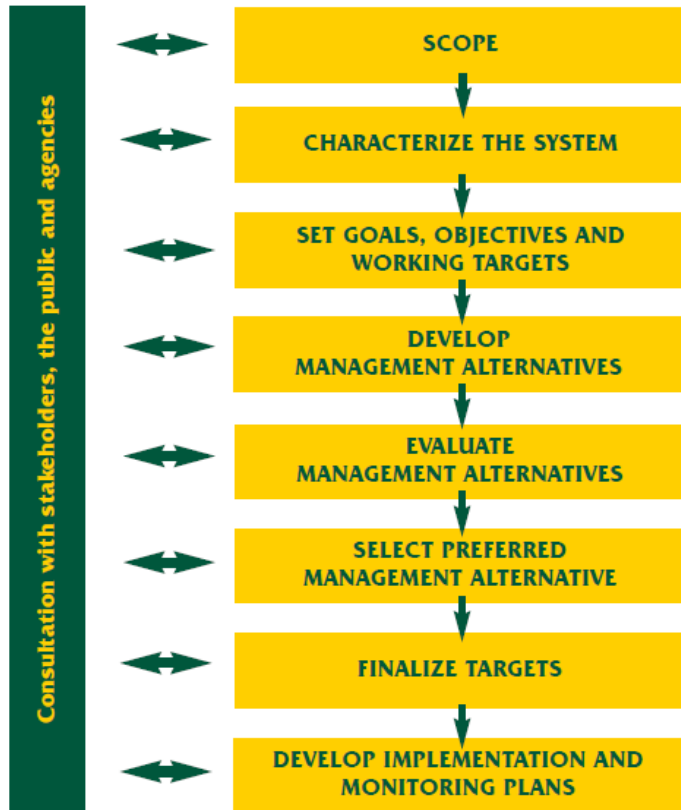
# Watershed Planning



It starts with a trigger....

Stakeholder, Public & Agency  
Involvement

# Watershed Planning



## ▶ Characterizing the System

- surface water resources
- surface water quality
- groundwater resources
- stream morphology
- terrestrial resources
- aquatic resources
- land use (ex. & prop.)
- demographics

Steps in Sub/watershed planning

Watershed Studies

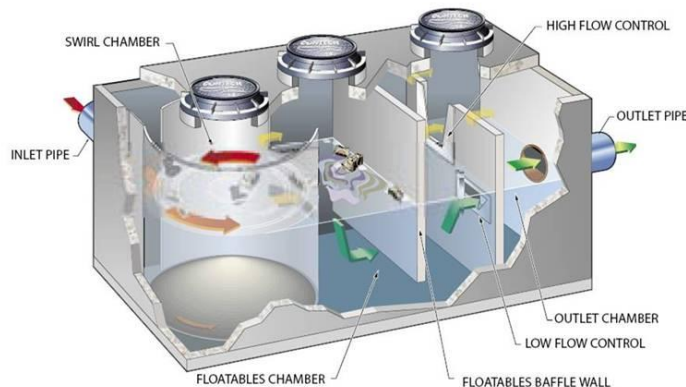
# Background

- 2006 Stormwater Background Study recommends 17 priority subwatershed studies
- MOECC announces \$2.3 Million in funding to complete 9 subwatershed studies
- Ramsey Lake first study to be initiated
- Funding Agreement required the City to reassess subwatershed priorities and determine the remaining 8 to be completed



# Key Objectives

Identify BMPs to preserve or enhance the quality of runoff



Enhanced Swale (photo from Toronto Regional Conservation Authority LID Guide) used in Valley areas, Vortec Treatment Unit Schematic and Interior of Nepahwin Unit



# Key Objectives

Identify BMPs to manage excessive runoff and minimize the impacts of flooding



Lavallee Stormwater Quality and Quantity Pond and Channel Improvements, Chelmsford

## Key Objectives

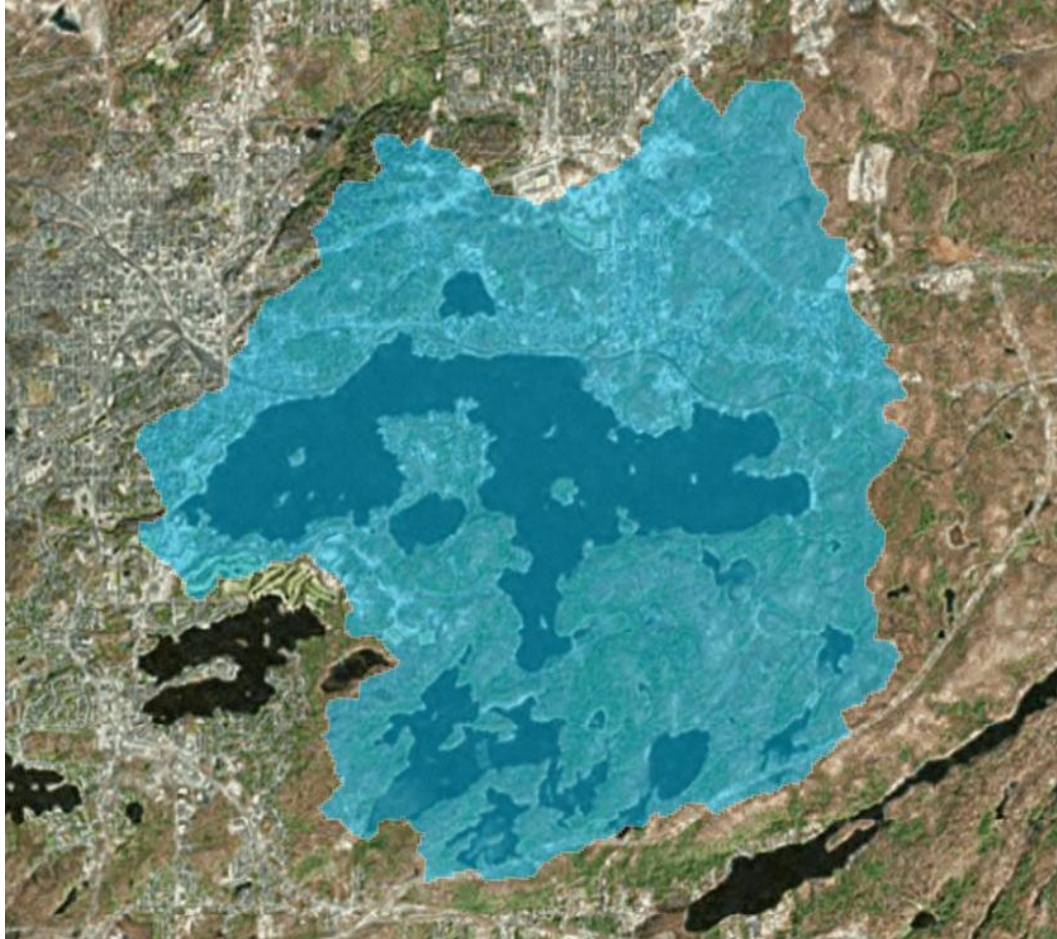
Complement the Official Plan by providing an additional lens to assist with the review and assessment of future development applications



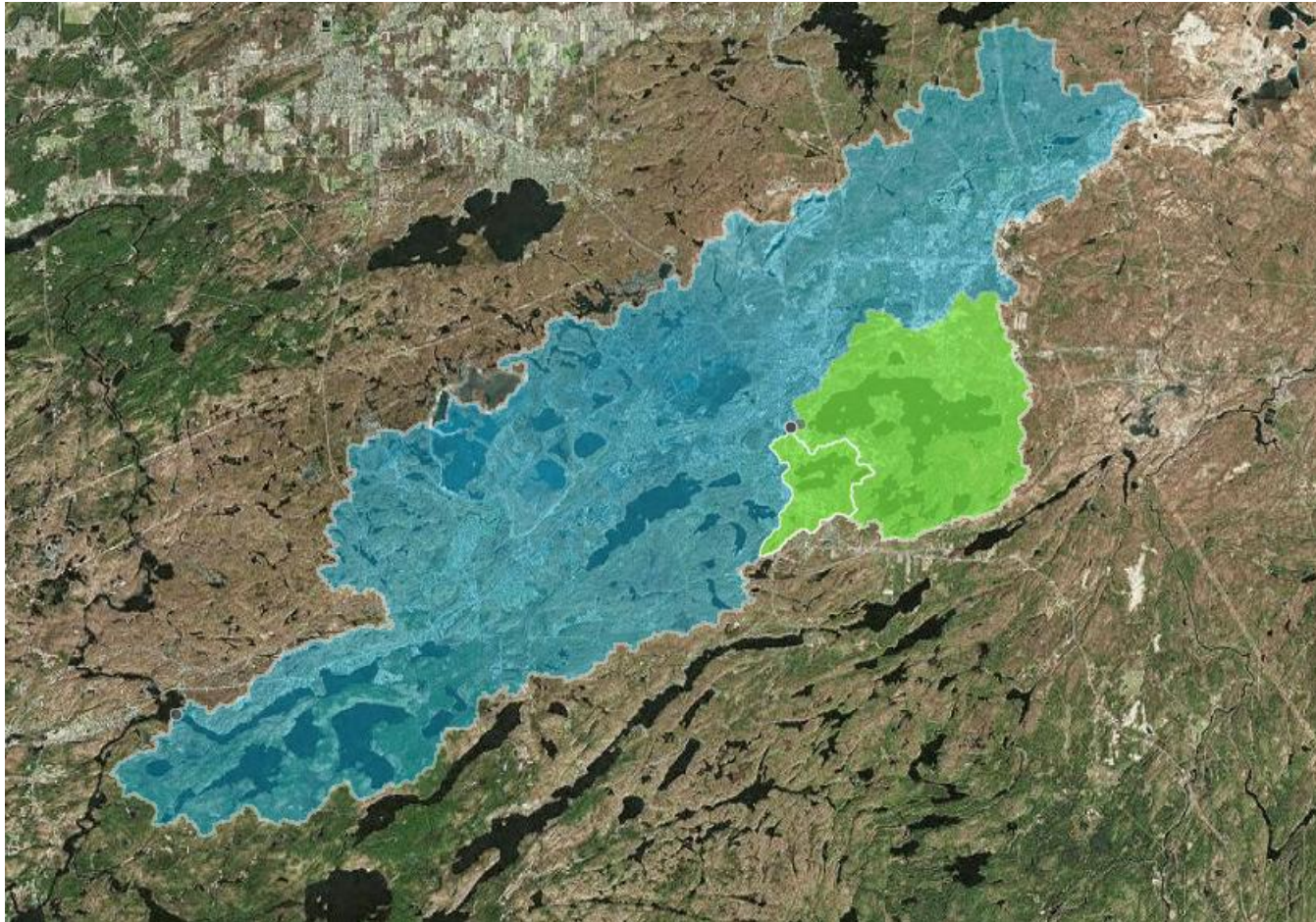
St. Agnes Street Stormwater Quality and Quantity Pond, Azilda



# 1. Ramsey Lake Priority Subwatershed

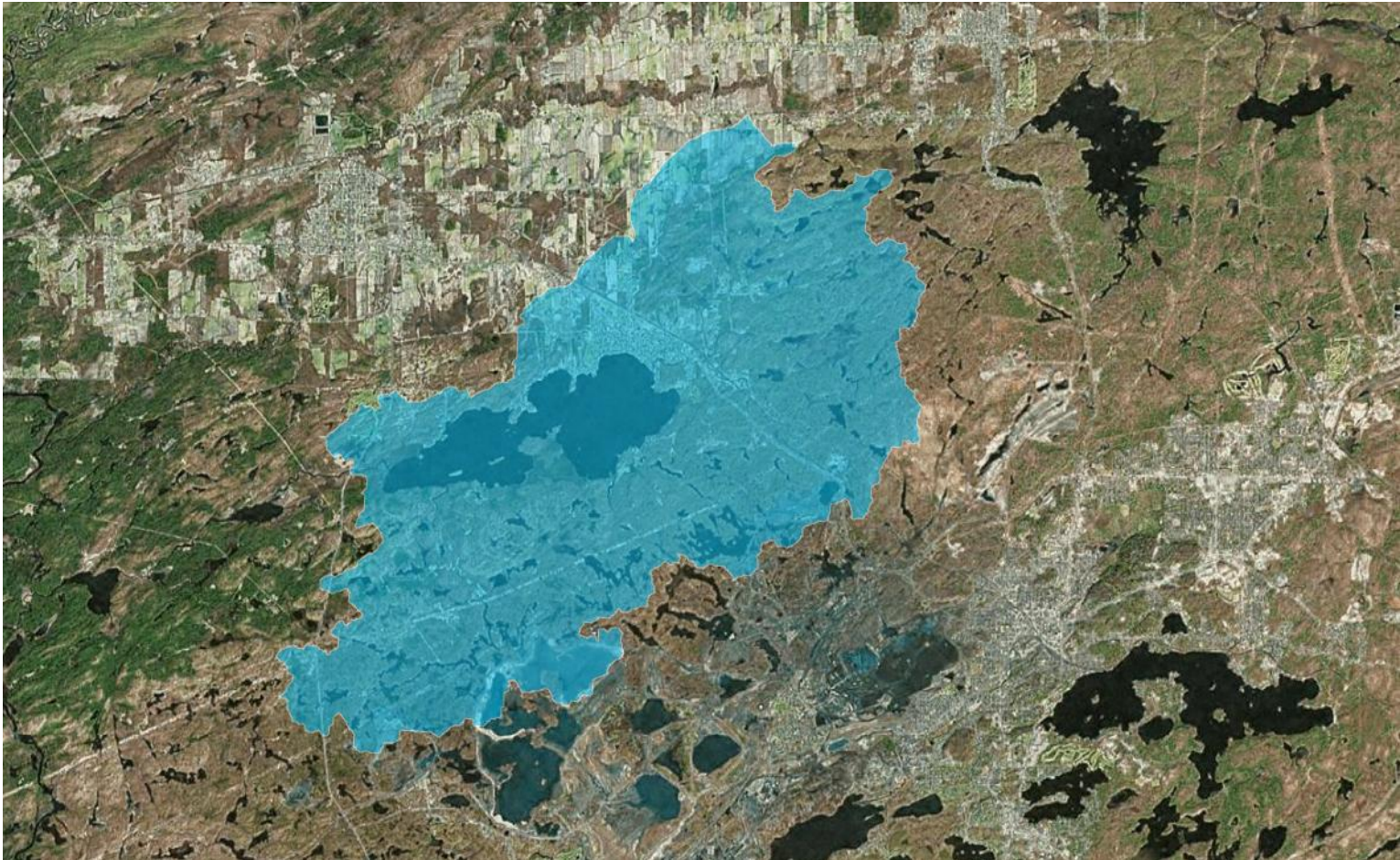


## 2. Junction Creek Priority Subwatershed





### 3. Whitewater (Azilda) Priority Subwatershed





# Remaining Subwatershed Prioritization

Subwatershed Study	Subwatershed Name	2006 Background Study Priority	2016 Priority
<b>Studies to be Completed with MOECC Funding</b>			
Ramsey Lake	Ramsey Lake	2	1
Junction Creek	Junction Creek	6	2
	Garson	11	
	Kelly Lake	17	
	Copper Cliff	16	
	Meatbird Creek – Lively	12	
	Mud Lake	7	
	Simon / McCharles Lake	8	
Whitewater Lake	Azilda	4	3
<b>Studies to be Completed with City Funding</b>			
Whitson River	Whitson River	3	4
	Whitson Lake	10	
	Chelmsford	9	
Richard Lake	Richard Lake	5	5
Wahnapitae	Coniston	13	6
	Wahnapitae	14	
Dowling	Dowling	15	7

## Benefits

Combining identified subwatershed studies into their larger subwatersheds allows;

- More effective use of funds
- More efficient use of time
- Holistic approach to study of subwatershed



## Conclusion

- Ramsey Lake Study to be issued in May
- Junction Creek to be issued mid summer
- We are open to receive comments and will provide the ToR for review and comment prior to issuing



Questions?



## Stokke, Samantha

---

**From:** Kelly, Mary K  
**Sent:** Monday, July 15, 2019 3:59 PM  
**To:** Stokke, Samantha  
**Subject:** FW: Junction Creek Consultation

---

**From:** Paul Javor <Paul.Javor@greatersudbury.ca>  
**Sent:** Thursday, May 03, 2018 10:17 AM  
**To:** Christian Naponse <CNaponse@WLFN.com>  
**Subject:** Re: Junction Creek Consultation

Christian,

I am glad that you reached out. We presented to Atikameksheng Anishnawbek Council in Spring 2016 and wanted to return when we had results to present. We are still a few weeks away from finishing the documents but will contact you once we are and set something up.

Thank You

Paul

Paul Javor, MAsC, P.Eng.  
Drainage Engineer  
Infrastructure Capital Planning Services  
City of Greater Sudbury  
Tel: 705-674-4455 Ext. 3691  
[Paul.Javor@greatersudbury.ca](mailto:Paul.Javor@greatersudbury.ca)

>>> Christian Naponse <[CNaponse@WLFN.com](mailto:CNaponse@WLFN.com)> 5/3/2018 9:31 AM >>>  
Good morning,

I am contacting you regarding the Junction Creek Consultations which took place in March. I apologize for not addressing this sooner. I would like to know if we could hold an open house here in our community with regards to this issue. Generally when it comes to projects in our traditional territory we prefer to have a session within the community as opposed to putting out the public information sessions and hoping our community members attend. Information sessions within our community are generally better received.

Would it be possible to host a session here in Atikameksheng?



*Miigwetch,*

*Christian Naponse  
Consultation Coordinator*



Atikameksheng Anishnawbek  
25 Reserve Rd.  
Naughton, ON P0M 2M0  
705-692-3651 ext. 201  
[cnaponse@wfn.com](mailto:cnaponse@wfn.com)