

NOTICE OF STUDY COMMENCEMENT

Junction Creek Subwatershed Study and Stormwater Master Plan

The City of Greater Sudbury recognizes the importance of water resources to life and so protecting watersheds has been identified as a priority. The City has received a \$2.3 Million grant from the Ontario Government to complete studies and develop plans to protect its water resources within 9 subwatersheds. The Junction Creek Subwatershed Study and Master Plan includes 7 of the 9 subwatersheds included in this funding.

The Junction Creek Subwatershed covers a significant portion of the City of Greater Sudbury (see Study Area map) and includes many unique environmental and geological features. The Subwatershed Study and Stormwater Master Plan aims to develop a comprehensive management strategy to protect, maintain and enhance surface water and groundwater quality and quantity control through environmentally sound policy and plans. The results of this process will provide guidance for development activities and provide recommendations for strategies to minimize the degradation of water quality, flood risks, erosion, and other potential impacts to natural systems. It will also provide clear implementation guidance on priorities, timing, proponentcy, process, monitoring and future study needs.

The Process

This study will follow the planning process outlined by Municipal Engineers Association's "Municipal Class Environmental Assessment" (June 2000, amended 2007, 2011 and 2015). It is being conducted as Class Environmental Assessment (Class EA) in accordance with the Ontario Environmental Assessment Act and will meet the requirements of the Class EA Phases 1 and 2. This Notice marks the start of the process that will define the problems and opportunities, identify and evaluate alternative solutions, and determine the preferred solution(s) in consultation with the City of Greater Sudbury, regulating agencies, Indigenous groups, and the public. Consultation is a key component of the study.

Comments

The City is interested in hearing any comments or input that you may have about this study. Comments and information regarding the study are being collected to assist the City in meeting the requirements of the Environmental Assessment Act. This material will be kept on file for use during the study and may be included in study documentation.

During the study, there will be 5 public meetings held to discuss various aspects of the study, including problems, opportunities, alternative solutions, evaluation criteria, environmental impacts and mitigation measures. The public meeting dates and details will be advertised as the study progresses. Once the study is complete, a Master Plan document will be prepared and be available for public review and comment. A Notice of Completion will be issued at that stage.

Contacts

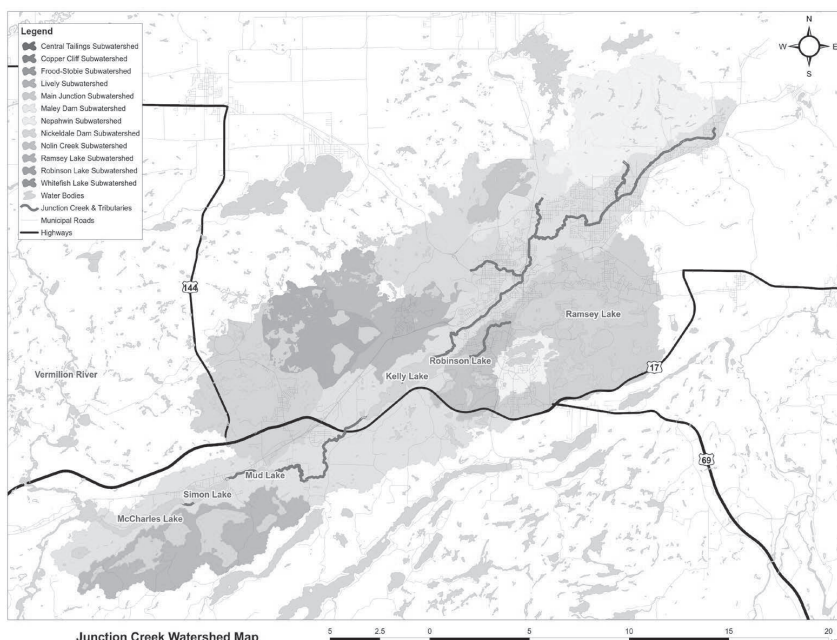
If you have questions or comments related to this study, please contact:

Paul Javor, M.A.Sc., P.Eng.
Drainage Engineer
City of Greater Sudbury
 200 Brady Street, 2nd Floor
 Sudbury, ON P3A 5P3
 Tel: 705.674.4455 x 3691
 Fax: 705.682.2260
 E-mail: Paul.Javor@greatersudbury.ca

Tim McBride, B.Sc., P.Geo.
Consultant Project Manager
Amec Foster Wheeler Environment & Infrastructure
 131 Fielding Rd,
 Lively, ON P3Y 1L7
 Tel: 705.682.2632
 E-mail: tim.mcbride@amecfw.com

Information will be collected in accordance with the Freedom of Information and Protection of Privacy Act. With the exception of personal information, all comments will become part of the public record.

This Notice first issued on March 2017.



3-1-1 At Your Service

Greater | Grand
Sudbury
 www.greatersudbury.ca



FILE PHOTO

Greater Sudbury bought more than \$2.1 million worth of property in 2016, while selling land it no longer needs brought in about \$293,500.

Budget

City bought \$2.1M in land in 2016

NORTHERN LIFE STAFF

Greater Sudbury bought more than \$2.1 million worth of property in 2016, while selling land it no longer needs brought in about \$293,500.

The city's real estate department details the transactions in a report headed to the city's planning committee on Monday.

The biggest single purchase last year was \$1.1 million for parkland on Ramsey Lake Road. Another \$375,000 was spent on property on Kelly Lake Road for a future rock tunnel. Several purchases were for property needed for drainage work.

But much of the money went towards buying property for The Kingsway widening project: \$345,000 for land on Barry Street; \$220,000 for land on The Kingsway; \$162,000 on Cochrane Street; \$124,000 for land on Lloyd Street; and, \$109,000 for land on Mont Adam Street.

On the books since 1998, the project aims to improve traffic flow and road alignment on

The Kingsway between the end of the Brady Street Extension and Laking Toyota. The project would widen The Kingsway to a five-lane section (including a center turn lane) and revise the alignment to straighten curve in the road. The cost is estimated at \$24 million.

A motion from Ward 5 Coun. Bob Kirwan in January to stop purchasing property for the project was defeated.

Kirwan argued that with the existing infrastructure deficit already in the hundreds of millions, the project may never happen.

But other councillors said the project was important long term, and offered a change to improve The Kingsway, one of the busiest roadways in the city.

At that meeting, Keith Forrester, who handles real estate for the city, said there are 51 properties that still have to be acquired, a mix of single family homes and apartments.

@darrenmacd

Paris in Bloom

on Paris Street

An All New Experience!

Paris in Bloom offers you a unique experience for all your special floral needs and so much more!

www.parisinbloom.ca
 96 Paris Street
 705.674.9685

AVIS CONCERNANT L'AMORCE D'UNE ÉTUDE

Étude du sous-bassin hydrographique et plan directeur des eaux pluviales du ruisseau Junction

Puisque la Ville du Grand Sudbury (VGS) reconnaît l'importance des ressources en eau pour la vie, la protection des bassins hydrographiques est une priorité. La VGS a reçu une subvention de 2,3 millions de dollars du gouvernement de l'Ontario afin de mener des études et de développer des plans de protection de ses ressources en eau dans 9 sous-bassins hydrographiques. L'étude du sous-bassin hydrographique et plan directeur du ruisseau Junction porte sur sept des neuf sous-bassins hydrographiques faisant partie du financement.

Le sous-bassin hydrographique du ruisseau Junction couvre une grande partie de la VGS (voir la carte de la zone d'étude) et comprend bien des caractéristiques environnementales et géologiques uniques. L'étude du sous-bassin hydrographique et plan directeur des eaux pluviales vise à élaborer une stratégie de gestion d'ensemble afin de protéger, de maintenir et de renforcer le contrôle de la qualité et de la quantité des eaux de surface et des eaux souterraines au moyen d'une politique et de plans écologiques. Les résultats de ce processus guideront les activités d'aménagement et fourniront des recommandations pour les stratégies afin de réduire au minimum la dégradation de la qualité de l'eau, les risques d'inondation, l'érosion et d'autres ripensances éventuelles sur les systèmes naturels. Ils fourniront aussi des directives précises de mise en œuvre relativement aux priorités, au calendrier, au processus, au suivi et aux besoins futurs de recherche.

Le processus

L'étude suivra le processus de planification indiqué dans le document intitulé « Municipal Class Environmental Assessment » (évaluation environnementale municipale de portée générale) de la Municipal Engineers Association (juin 2006, modifié en 2007, 2011 et 2015). Elle est menée en tant qu'évaluation environnementale de portée générale, conformément à la Loi sur les évaluations environnementales de l'Ontario, et elle répondra aux exigences des phases 1 et 2 de ce type d'évaluation. Le présent avis marque le début du processus de définition des problèmes et des possibilités, d'identification et d'évaluation des solutions de rechange ainsi que de détermination des solutions préférées, en consultation avec la VGS, les organismes de réglementation, les groupes autochtones et la population. La consultation est un volet essentiel de l'étude.

Commentaires

La VGS veut entendre vos commentaires ou votre avis sur cette étude. Les commentaires et les renseignements à ce sujet sont recueillis afin de l'aider à répondre aux exigences de la Loi sur les évaluations environnementales. Ces informations seront conservées à des fins d'utilisation durant l'étude et ils pourraient faire partie des documents qu'on y trouve.

Durant l'étude, il y aura cinq assemblées publiques afin de discuter d'aspects variés à ce sujet, y compris les problèmes, les possibilités, les solutions de rechange, les critères d'évaluation, les ripensances sur l'environnement et les mesures d'atténuation. Les dates et les renseignements concernant les assemblées publiques seront annoncés au fur et à mesure que l'étude avance. Lorsque l'étude sera terminée, un plan directeur sera préparé et le public pourra en prendre connaissance et transmettre ses commentaires à ce sujet. Un avis d'achèvement sera alors diffusé.

Personnes-ressources

Si vous avez des questions ou des commentaires concernant cette étude, veuillez communiquer avec l'une des personnes suivantes.

Paul Javot, M.Sc.A., ing.
Ingénieur en drainage
Ville du Grand Sudbury
131, chemin Fielding
Sudbury (Ontario) P3A 5P3
tél. : 705-674-6465, poste 3691
fax : 705-682-7336

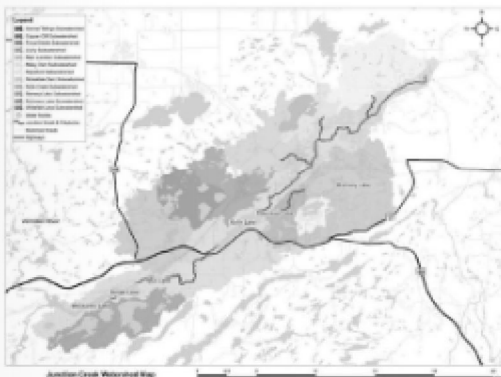
Courriel : Paul.Javot@grandsudbury.ca

Tim McBride, B.Sc., G.J.
Gestionnaire de projet de la firme-conseil
Amec Foster Wheeler Environment & Infrastructure
131, chemin Fielding
Sudbury (Ontario) P3A 5P3
tél. : 705-682-7637

Courriel : tim.mcbride@amecfw.com

Les renseignements seront recueillis conformément à la Loi sur l'accès à l'information et la protection de la vie privée. Seul les renseignements personnels, tous les commentaires seront connus du public.

Le présent avis a d'abord été diffusé en mars 2017.



3-1-1 Service

Sudbury
www.grandsudbury.ca

L'arrivée de la famille syrienne prévue pour mars

Émilie Deschênes

TIMMINS

Le Comité de parrainage de réfugiés de Timmins (CPRT) a reçu une confirmation que l'arrivée de la famille de réfugiés syriens à Timmins devrait avoir lieu ce mois-ci. Plus d'une année s'est écoulée depuis que le CPRT a présenté sa demande de parrainage en raison d'un ralentissement au niveau du traitement des demandes.

Le Comité s'apprête tout de même à accueillir une famille de réfugiés syriens composée de trois enfants et de leurs parents. «Malgré tous les délais, nous sommes extrêmement enthousiastes à l'idée d'aider à accueillir la famille», affirme le président du CPRT, Tom Baly. «Notre groupe ainsi que la communauté attendent depuis plus d'un an la relocalisation d'une famille de réfugiés syriens. À ce jour, des dizaines de milliers de réfugiés syriens ont trouvé refuge dans des collectivité

tés à travers le Canada. La ville de Timmins peut désormais dire qu'elle aura joué un petit rôle en la pire crise humanitaire depuis la fin de la Seconde Guerre mondiale. Ceci n'aurait pu être possible sans le générique soutien financier et les bénévoles de notre communauté», poursuit-il.

Quiconque souhaite offrir ses services à titre de bénévole ou faire un don est prié de communiquer avec M. Baly au Centre multiculturel de Timmins et du district en composant le 705-269-8622.

Le coin du pharmacien

dit par : Chloé Pilon



Maintenir une bonne nutrition

Il est important de maintenir une alimentation équilibrée afin d'être en bonne santé et éviter les maladies chroniques qui peuvent apparaître plus tard dans la vie, comme le diabète et l'hypertension. En raison de notre mode de vie, cet objectif peut être difficile à atteindre.

Afin de maintenir une alimentation équilibrée, il faut essayer :

- de manger des fruits et des légumes en abondance;
- de consommer beaucoup de protéines;
- de consommer des produits laitiers;
- d'éviter les aliments riches en sucres, sel et lipides.

Il est suggéré :

- de réduire la taille des portions;
- de mélanger des fruits dans vos céréales;
- de prendre une collation de fruits frais ou secs en milieu de matinée;
- d'accompagner vos repas par une salade;
- de manger une portion de légumes frais au souper;
- de manger une portion de fruits sucrés comme dessert;
- de manger de la volaille, des œufs, des fruits de mer et des noix, qui contiennent tous des protéines, mais moins de gras que la viande rouge;
- de consommer des produits laitiers;
- de ne pas oublier les glucides contenus dans l'avoine, les pommes de terre, le pain et les céréales entières, les noix, le riz brun et les haricots.

Voici quelques trucs afin de remplacer les mauvais sucres et les mauvaises graisses :

- Faites cuire les aliments avec de l'huile végétale au lieu du beurre ou du saindoux;
- Remplacez le beurre ou la margarine sur le pain par de l'huile d'olive chaude;
- Faites de la vinaigrette avec de l'huile d'olive vierge plutôt qu'avec de la crème ou de la mayonnaise;
- Buvez beaucoup d'eau;
- Éliminez la malbouffe de votre alimentation.

PHARMACIE **Bradley** PHARMACY

Depuis 1954

705-675-5693

AVIS CONCERNANT L'AMORCE D'UNE ÉTUDE

Étude du sous-bassin hydrographique et plan directeur des eaux pluviales du ruisseau Junction

Puisque la Ville du Grand Sudbury (VGS) reconnaît l'importance des ressources en eau pour la vie, la protection des bassins hydrographiques est une priorité. La VGS a reçu une subvention de 2,3 millions de dollars du gouvernement de l'Ontario afin de mener des études et de développer des plans de protection de ses ressources en eau dans 9 sous-bassins hydrographiques. L'Étude du sous-bassin hydrographique et plan directeur du ruisseau Junction porte sur sept des neuf sous-bassins hydrographiques faisant partie du financement.

Le sous-bassin hydrographique du ruisseau Junction couvre une grande partie de la VGS (voir la carte de la zone d'étude) et comprend bien des caractéristiques environnementales et géologiques uniques. L'Étude du sous-bassin hydrographique et plan directeur des eaux pluviales vise à élaborer une stratégie de gestion d'ensemble afin de protéger, de maintenir et de rehausser le contrôle de la qualité et de la quantité des eaux de surface et des eaux souterraines au moyen d'une politique et de plans écologiques. Les résultats de ce processus guideront les activités d'aménagement et fourniront des recommandations pour les stratégies afin de réduire au minimum la dégradation de la qualité de l'eau, les risques d'inondation, l'érosion et d'autres répercussions éventuelles sur les systèmes naturels. Ils fourniront aussi des directives précises de mise en œuvre relativement aux priorités, au calendrier, au promoteur, au processus, au suivi et aux besoins futurs de recherche.

Le processus

L'étude suivra le processus de planification indiqué dans le document intitulé « Municipal Class Environmental Assessment » (évaluation environnementale municipale de portée générale) de la Municipal Engineers Association (juin 2000, modifié en 2007, 2011 et 2015). Elle est menée en tant qu'évaluation environnementale de portée générale, conformément à la Loi sur les évaluations environnementales de l'Ontario, et elle répondra aux exigences des phases 1 et 2 de ce type d'évaluation. Le présent avis marque le début du processus de définition des problèmes et des possibilités, d'identification et d'évaluation des solutions de rechange ainsi que de détermination des solutions préférées, en consultation avec la VGS, les organismes de réglementation, les groupes autochtones et la population. La consultation est un volet essentiel de l'étude.

Commentaires

La VGS veut entendre vos commentaires ou votre avis sur cette étude. Les commentaires et les renseignements à ce sujet sont recueillis afin de l'aider à répondre aux exigences de la Loi sur les évaluations environnementales. Ces informations seront conservées à des fins d'utilisation durant l'étude et ils pourraient faire partie des documents qu'on y trouvera.

Durant l'étude, il y aura cinq assemblées publiques afin de discuter d'aspects variés à ce sujet, y compris les problèmes, les possibilités, les solutions de rechange, les critères d'évaluation, les répercussions sur l'environnement et les mesures d'atténuation. Les dates et les renseignements concernant les assemblées publiques seront annoncés au fur et à mesure que l'étude progressera. Lorsque l'étude sera terminée, un plan directeur sera préparé et le public pourra en prendre connaissance et transmettre ses commentaires à ce sujet. Un avis d'achèvement sera alors diffusé.

Personnes-ressources

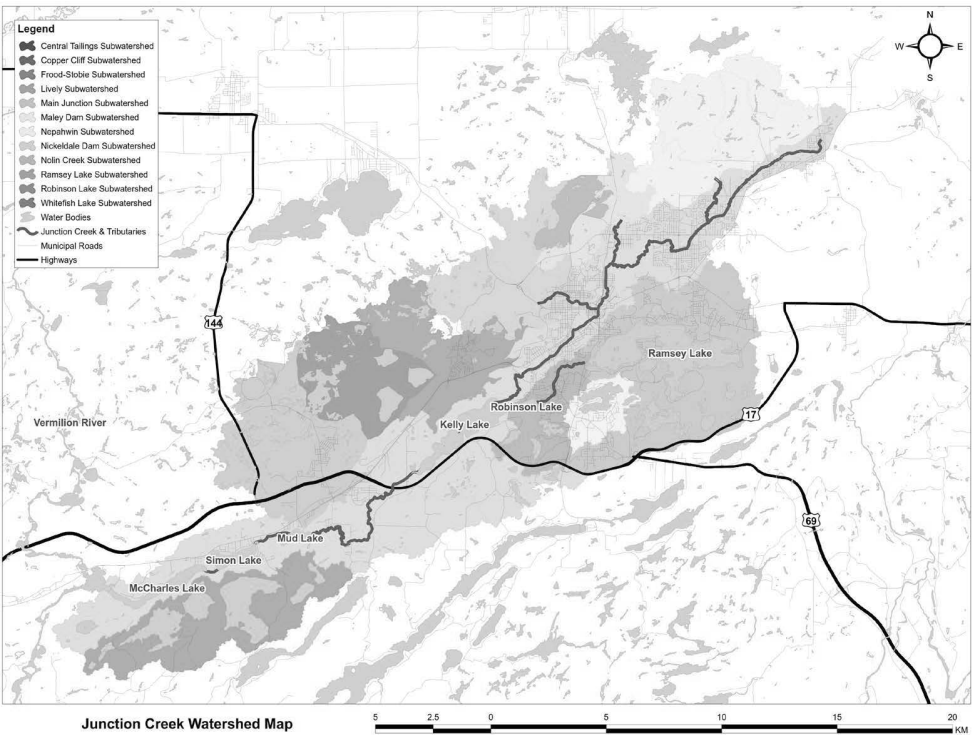
Si vous avez des questions ou des commentaires concernant cette étude, veuillez communiquer avec l'une des personnes suivantes.

Paul Javor, M.Sc.A., ing.
Ingénieur en drainage
Ville du Grand Sudbury
200, rue Brady, 2e étage
Sudbury (Ontario) P3A 5P3
Tél. : 705-674-4455, poste 3691
Fax : 705-682-2260
Courriel : Paul.Javor@grandsudbury.ca

Tim McBride, B.Sc, G.P.
Gestionnaire de projet de la firme-conseil
Amec Foster Wheeler Environment & Infrastructure
131, chemin Fielding
Lively (Ontario) P3Y 1L7
Tél. : 705-682-2632
Courriel : tim.mcbride@amecfw.com

Les renseignements seront recueillis conformément à la Loi sur l'accès à l'information et la protection de la vie privée. Sauf les renseignements personnels, tous les commentaires seront connus du public.

Le présent avis a d'abord été diffusé en mars 2017.



3-1-1 À votre service

Sudbury Greater | Grand
www.grandsudbury.ca

Kelly, Mary K

From: Kelly, Mary K
Sent: Tuesday, June 20, 2017 8:45 AM
To: rob.dobos@ec.gc.ca; alexandre.ferland@pc.gc.ca; EnviroOnt@tc.gc.ca; dan.thompson@dfo-mpo.gc.ca; lynn.buckham@ontario.ca; jean.enneson@ontario.ca; ross.hart@ontario.ca; rosanna.white@ontario.ca; anneleis.eckert@ontario.ca; karla.barboza@ontario.ca; Andrew.Healy@ontario.ca; jackie.vandevalk@ontario.ca; ali.veshkini@ontario.ca; lisa.myslicki@ontario.ca
Cc: Paul Javor; McBride, Tim I (Sudbury)
Subject: City of Greater Sudbury - Junction Creek Subwatershed Study and Master Plan - Notice of Commencement
Attachments: TY161021_NComm_JunctionCreek (Final).pdf

Good morning,

The City of Greater Sudbury is undertaking studies on nine watersheds within the municipal boundary. These studies are being completed to inform the development of plans to protect these vital resources. Please find attached the Notice of Commencement for the Junction Creek Subwatershed Study and Master Plan.

If you should have any questions please contact either the City's Project Manager, Paul Javor or Amec Foster Wheeler's Project Manager, Tim McBride via the contact information presented in the notice.

Cheers, Mary

Mary Kathryn Kelly B.Sc.

Senior Consultant - Human Environment, Amec Foster Wheeler Environment & Infrastructure

T/M +1 (705)-493-9393

mary.k.kelly@amecfw.com amecfw.com

NOTICE OF STUDY COMMENCEMENT

Junction Creek Subwatershed Study and Stormwater Master Plan

The City of Greater Sudbury recognizes the importance of water resources to life and so protecting watersheds has been identified as a priority. The City has received a \$2.3 Million grant from the Ontario Government to complete studies and develop plans to protect its water resources within 9 subwatersheds. The Junction Creek Subwatershed Study and Master Plan includes 7 of the 9 subwatersheds included in this funding.

The Junction Creek Subwatershed covers a significant portion of the City of Greater Sudbury (see Study Area map) and includes many unique environmental and geological features. The Subwatershed Study and Stormwater Master Plan aims to develop a comprehensive management strategy to protect, maintain and enhance surface water and groundwater quality and quantity control through environmentally sound policy and plans. The results of this process will provide guidance for development activities and provide recommendations for strategies to minimize the degradation of water quality, flood risks, erosion, and other potential impacts to natural systems. It will also provide clear implementation guidance on priorities, timing, proponentcy, process, monitoring and future study needs.

The Process

This study will follow the planning process outlined by Municipal Engineers Association's "Municipal Class Environmental Assessment" (June 2000, amended 2007, 2011 and 2015). It is being conducted as Class Environmental Assessment (Class EA) in accordance with the Ontario *Environmental Assessment Act* and will meet the requirements of the Class EA Phases 1 and 2. This Notice marks the start of the process that will define the problems and opportunities, identify and evaluate alternative solutions, and determine the preferred solution(s) in consultation with the City of Greater Sudbury, regulating agencies, Indigenous groups, and the public. Consultation is a key component of the study.

Comments

The City is interested in hearing any comments or input that you may have about this study. Comments and information regarding the study are being collected to assist the City in meeting the requirements of the *Environmental Assessment Act*. This material will be kept on file for use during the study and may be included in study documentation.

During the study, there will be 5 public meetings held to discuss various aspects of the study, including problems, opportunities, alternative solutions, evaluation criteria, environmental impacts and mitigation measures. The public meeting dates and details will be advertised as the study progresses. Once the study is complete, a Master Plan document will be prepared and be available for public review and comment. A Notice of Completion will be issued at that stage.

Contacts

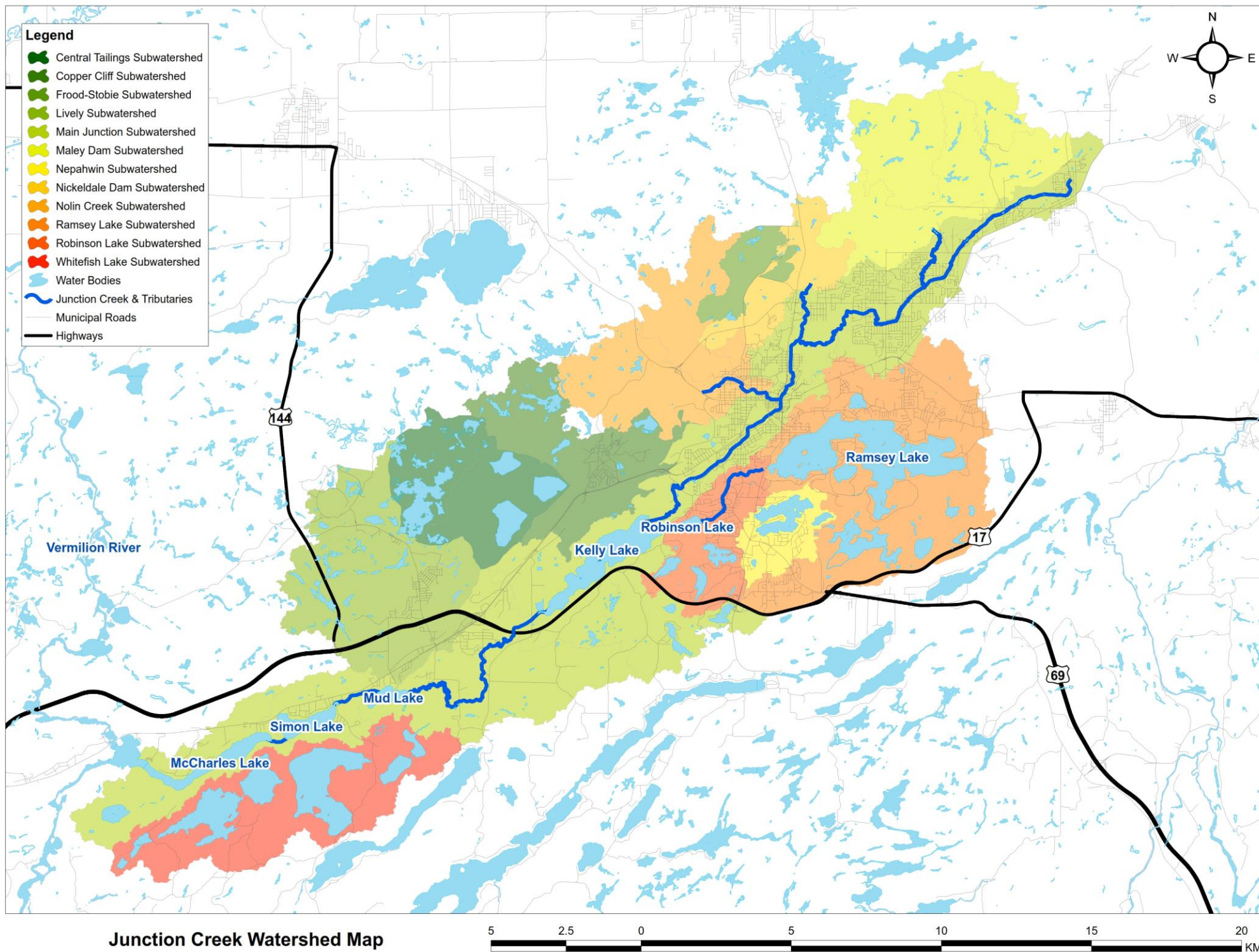
If you have questions or comments related to this study, please contact:

Paul Javor, M.A.Sc., P.Eng.
Drainage Engineer
City of Greater Sudbury
200 Brady Street, 2nd Floor
Sudbury, ON P3A 5P3
Tel: 705.674.4455 x 3691

E-mail: Paul.Javor@greatersudbury.ca

Tim McBride, B.Sc., P.Geo.
Consultant Project Manager
Amec Foster Wheeler Environment & Infrastructure
131 Fielding Rd,
Lively, ON P3Y 1L7
Tel : 705.682.2632
Fax : 705.682.2260
E-mail : tim.mcbride@amecfw.com

Information will be collected in accordance with the Freedom of Information and Protection of Privacy Act. With the exception of personal information, all comments will become part of the public record.
This Notice first issued on March 2017.



Kelly, Mary K

From: Van de Valk, Jackie (OMAFRA) <Jackie.VandeValk@ontario.ca>
Sent: Tuesday, June 20, 2017 10:56 PM
To: Kelly, Mary K; O'Neill, John (OMAFRA)
Cc: Paul Javor; McBride, Tim I (Sudbury)
Subject: RE: City of Greater Sudbury - Junction Creek Subwatershed Study and Master Plan - Notice of Commencement

Hi Mary Kathryn,

John O'Neil is the OMAFRA Rural Planner for the Sudbury area, I am hereby forwarding your request to him.

The map showing the OMAFRA Planners areas of responsibility can be found here.

<http://ontarioca11.maps.arcgis.com/apps/webappviewer/index.html?id=93d00701708946d5b011d2ab88319597>

Jackie

Jackie Van de Valk, P.Ag., Rural Planner - Environmental & Land Use Policy
Ontario Ministry of Agriculture, Food and Rural Affairs
10 – 6484 Wellington Road 7, Elora, ON N0B 1S0 • Tel: 519.846.3415

From: Kelly, Mary K [mailto:Mary.k.Kelly@amecfw.com]
Sent: June 20, 2017 8:45 AM
To: rob.dobos@ec.gc.ca; alexandre.ferland@pc.gc.ca; EnviroOnt@tc.gc.ca; dan.thompson@dfo-mpo.gc.ca; Buckham, Lynn (MMA/MHO); Enneson, Jean (MNRF); Hart, Ross (MNRF); White, Rosanna (MOECC); Eckert, Anneleis (MOECC); Barboza, Karla (MTCS); Healy, Andrew (MTO); Van de Valk, Jackie (OMAFRA); Veshkini, Ali (MCSCS); lisa.myslicki@ontario.ca
Cc: Paul Javor; McBride, Tim I (Sudbury)
Subject: City of Greater Sudbury - Junction Creek Subwatershed Study and Master Plan - Notice of Commencement

Good morning,

The City of Greater Sudbury is undertaking studies on nine watersheds within the municipal boundary. These studies are being completed to inform the development of plans to protect these vital resources. Please find attached the Notice of Commencement for the Junction Creek Subwatershed Study and Master Plan.

If you should have any questions please contact either the City's Project Manager, Paul Javor or Amec Foster Wheeler's Project Manager, Tim McBride via the contact information presented in the notice.

Cheers, Mary

Mary Kathryn Kelly B.Sc.

Senior Consultant - Human Environment, Amec Foster Wheeler Environment & Infrastructure
T/M +1 (705)-493-9393
mary.k.kelly@amecfw.com amecfw.com

This message is the property of Amec Foster Wheeler plc and/or its subsidiaries and/or affiliates and is intended only for the named recipient(s). Its contents (including any attachments) may be confidential, legally privileged or otherwise protected from disclosure by law. Unauthorised use, copying, distribution or disclosure of any of it may be unlawful and is strictly prohibited. We assume no

responsibility to persons other than the intended named recipient(s) and do not accept liability for any errors or omissions which are a result of email transmission. If you have received this message in error, please notify us immediately by reply email to the sender and confirm that the original message and any attachments and copies have been destroyed and deleted from your system. If you do not wish to receive future unsolicited commercial electronic messages from us, **please forward this email to: unsubscribe@amecfw.com and include “Unsubscribe” in the subject line.** If applicable, you will continue to receive invoices, project communications and similar factual, non-commercial electronic communications.

Please click <http://amecfw.com/email-disclaimer> for notices and company information in relation to emails originating in the UK, Italy or France.

Kelly, Mary K

From: EnviroOnt <EnviroOnt@tc.gc.ca>
Sent: Thursday, June 22, 2017 8:05 AM
To: Paul.Javor@greatersudbury.ca; McBride, Tim I (Sudbury)
Cc: Kelly, Mary K
Subject: NEATS 45035: Class EA - Junction Creek Subwatershed Study & Stormwater Master Plan, Sudbury ON
Attachments: TY161021_NComm_JunctionCreek (Final).pdf

Greetings,

Thank you for your correspondence.

Please note Transport Canada **does not** require receipt of all individual or Class EA related notifications. We are requesting project proponents to self-assess if their project:

1. Will interact with a federal property and/or waterway by reviewing the Directory of Federal Real Property, available at www.tbs-sct.gc.ca/dfrp-rbif/; **and**
2. Will require approval and/or authorization under any Acts administered by Transport Canada* available at <http://www.tc.gc.ca/eng/acts-regulations/menu.htm>.

Projects that will occur on federal property prior to exercising a power, performing a function or duty in relation to that project, will be subject to a determination of the likelihood of significant adverse environmental effects, per Section 67 of the *Canadian Environmental Assessment Act, 2012*.

If the aforementioned does not apply, the Environmental Assessment program should not be included in any further correspondence and future notifications will not receive a response. If there is a role under the program, correspondence should be forwarded *electronically* to: EnviroOnt@tc.gc.ca with a **brief description of Transport Canada's expected role**.

*Below is a summary of the most common Acts that have applied to projects in an Environmental Assessment context:

- **Navigation Protection Act (NPA)** – the Act applies primarily to works constructed or placed in, on, over, under, through, or across scheduled navigable waters set out under the Act. The Navigation Protection Program administers the NPA through the review and authorization of works affecting scheduled navigable waters. Information about the Program, NPA and approval process is available at: <http://www.tc.gc.ca/eng/programs-621.html>. Enquiries can be directed to NPPONT-PPNONT@tc.gc.ca or by calling (519) 383-1863.
- **Railway Safety Act (RSA)** – the Act provides the regulatory framework for railway safety, security, and some of the environmental impacts of railway operations in Canada. The Rail Safety Program develops and enforces regulations, rules, standards and procedures governing safe railway operations. Additional information about the Program is available at: <https://www.tc.gc.ca/eng/railsafety/menu.htm>. Enquiries can be directed to RailSafety@tc.gc.ca or by calling (613) 998-2985.
- **Transportation of Dangerous Goods Act (TDGA)** – the transportation of dangerous goods by air, marine, rail and road is regulated under the TDGA. Transport Canada, based on risks, develops safety standards and regulations, provides oversight and gives expert advice on dangerous goods to promote public safety. Additional information about the transportation of dangerous goods is available at: <https://www.tc.gc.ca/eng/tdg/safety-menu.htm>. Enquiries can be directed to TDG-TMDOntario@tc.gc.ca or by calling (416) 973-1868.

- **Aeronautics Act** – Transport Canada has sole jurisdiction over aeronautics, which includes aerodromes and all related buildings or services used for aviation purposes. Aviation safety in Canada is regulated under this Act and the Canadian Aviation Regulations (CARs). Elevated Structures, such as wind turbines and communication towers, would be examples of projects that must be assessed for lighting and marking requirements in accordance with the CARs. Transport Canada also has an interest in projects that have the potential to cause interference between wildlife and aviation activities. One example would be waste facilities, which may attract birds into commercial and recreational flight paths. The *Land Use In The Vicinity of Aerodromes* publication recommends guidelines for and uses in the vicinity of aerodromes, available at: <https://www.tc.gc.ca/eng/civilaviation/publications/tp1247-menu-1418.htm>. Enquires can be directed to CASO-SACO@tc.gc.ca or by calling 1 (800) 305-2059 / (416) 952-0230.

Please advise if additional information is needed.

Thank you,

Environmental Assessment Program, Ontario Region

Transport Canada / Government of Canada / 4900 Yonge St., Toronto, ON M2N 6A5
EnviroOnt@tc.gc.ca / Facsimile : (416) 952-0514 / TTY: 1-888-675-6863

Programme d'évaluation environnementale, Région de l'Ontario

Transports Canada / Gouvernement du Canada / 4900, rue Yonge, Toronto, ON, M2N 6A5
EnviroOnt@tc.gc.ca / télécopieur: (416) 952-0514

From: Kelly, Mary K [mailto:Mary.k.Kelly@amecfw.com]

Sent: Tuesday, June 20, 2017 8:45 AM

To: rob.dobos@ec.gc.ca; alexandre.ferland@pc.gc.ca; EnviroOnt <EnviroOnt@tc.gc.ca>; dan.thompson@dfo-mpo.gc.ca; lynn.buckham@ontario.ca; jean.enneson@ontario.ca; ross.hart@ontario.ca; rosanna.white@ontario.ca; anneleis.eckert@ontario.ca; karla.barboza@ontario.ca; Andrew.Healy@ontario.ca; jackie.vandevalk@ontario.ca; ali.veshkini@ontario.ca; lisa.myslicki@ontario.ca

Cc: Paul Javor <Paul.Javor@greatersudbury.ca>; McBride, Tim I (Sudbury) <Tim.McBride@amecfw.com>

Subject: City of Greater Sudbury - Junction Creek Subwatershed Study and Master Plan - Notice of Commencement

Good morning,

The City of Greater Sudbury is undertaking studies on nine watersheds within the municipal boundary. These studies are being completed to inform the development of plans to protect these vital resources. Please find attached the Notice of Commencement for the Junction Creek Subwatershed Study and Master Plan.

If you should have any questions please contact either the City's Project Manager, Paul Javor or Amec Foster Wheeler's Project Manager, Tim McBride via the contact information presented in the notice.

Cheers, Mary

Mary Kathryn Kelly B.Sc.

Senior Consultant - Human Environment, Amec Foster Wheeler Environment & Infrastructure
 T/M +1 (705)-493-9393
mary.k.kelly@amecfw.com amecfw.com

recipient(s). Its contents (including any attachments) may be confidential, legally privileged or otherwise protected from disclosure by law. Unauthorised use, copying, distribution or disclosure of any of it may be unlawful and is strictly prohibited. We assume no responsibility to persons other than the intended named recipient(s) and do not accept liability for any errors or omissions which are a result of email transmission. If you have received this message in error, please notify us immediately by reply email to the sender and confirm that the original message and any attachments and copies have been destroyed and deleted from your system. If you do not wish to receive future unsolicited commercial electronic messages from us, **please forward this email to: unsubscribe@amecfw.com and include "Unsubscribe" in the subject line.** If applicable, you will continue to receive invoices, project communications and similar factual, non-commercial electronic communications.

Please click <http://amecfw.com/email-disclaimer> for notices and company information in relation to emails originating in the UK, Italy or France.

Kelly, Mary K

From: McBride, Tim I (Sudbury)
Sent: Friday, June 23, 2017 11:10 AM
To: Kelly, Mary K
Subject: Fwd: 0006948 - Greater Sudbury - Junction Creek Subwatershed Study and Stormwater Master Plan
Attachments: 0006948 - Greater Sudbury - Junction Creek Subwatershed Study and Stormwater Master Plan.pdf; ATT00001.htm

FYI

Sent from my iPhone

Begin forwarded message:

From: "Elkow, Jeff (MTCS)" <Jeff.Elkow@ontario.ca>
Date: June 23, 2017 at 10:05:58 AM EDT
To: "tim.mcbride@amecfw.com" <tim.mcbride@amecfw.com>
Cc: "paul.javor@greatersudbury.ca" <paul.javor@greatersudbury.ca>
Subject: 0006948 - Greater Sudbury - Junction Creek Subwatershed Study and Stormwater Master Plan

Tim,

Please see attached the Ministry of Tourism, Culture and Sport acknowledgement letter for the above referenced project.

If you have any questions please let me know.

Regards,

Jeff Elkow, M.A.

Heritage Planner

Heritage Program | Programs and Services Branch | Ministry of Tourism, Culture and Sport

401 Bay Street Suite 1700 Toronto ON M7A 0A7

Tel. 416.314.7182 | email: jeff.elkow@ontario.ca

**Ministry of Tourism,
Culture and Sport**

Heritage Program Unit
Programs and Services Branch
401 Bay Street, Suite 1700
Toronto ON M7A 0A7
Tel: 416 317 7182
Fax: 416 212 1802

**Ministère du Tourisme,
de la Culture et du Sport**

Unité des programmes patrimoine
Direction des programmes et des services
401, rue Bay, Bureau 1700
Toronto ON M7A 0A7
Tél: 416 314 7182
Télé: 416 212 1802



June 22, 2017 (EMAIL ONLY)

Tim McBride, Consultant Project Manager
Amec Foster Wheeler Environmental and Infrastructure
131 Fielding Road
Lively, ON P3Y 1L7
E: tim.mcbride@amecfw.com

RE: MTCS file #: 0006948
Proponent: City of Greater Sudbury
Subject: Notice of Study Commencement
Junction Creek Subwatershed Study and Stormwater Master Plan
Location: City of Greater Sudbury, Ontario

Dear Tim McBride:

Thank you for providing the Ministry of Tourism, Culture and Sport (MTCS) with the Notice of Study Commencement for your project. MTCS's interest in this Master Plan project relates to its mandate of conserving Ontario's cultural heritage, which includes:

- Archaeological resources, including land-based and marine;
- Built heritage resources, including bridges and monuments; and,
- Cultural heritage landscapes.

Project Summary

The City of Greater Sudbury has hired Amec Foster Wheeler Environment and Infrastructure to undertake a study of the Junction Creek Subwatershed and develop a Stormwater Master Plan. The purpose of the study is to develop a comprehensive management strategy to protect, maintain and enhance surface water and groundwater quality and quantity control through environmentally sound policy and plans.

Under the Municipal Class Environmental Assessment (EA) process, the proponent is required to determine a project's potential impact on cultural heritage resources. A Master Plan project at minimum will address Phases 1 and 2 of the Municipal Class EA process. Developing and reviewing inventories of known and potential cultural heritage resources within the study area can identify specific resources that may play a significant role in guiding the evaluation of alternatives for subsequent project-driven EAs.

While some cultural heritage resources may have already been formally identified, others may be identified through screening and evaluation. Aboriginal communities may have knowledge that can contribute to the identification of cultural heritage resources, and we suggest that any engagement with Aboriginal communities includes a discussion about known or potential cultural heritage resources that are of value to these communities. Municipal Heritage Committees, historical societies and other local heritage organizations may also have knowledge that contributes to the identification of cultural heritage resources.

Archaeological Resources

Your Master Plan project may impact archaeological resources and you should screen the project with the MTCS [Criteria for Evaluating Archaeological Potential](#) and [Criteria for Evaluating Marine Archaeological Potential](#) to determine if archaeological assessments will be needed for subsequent

project-driven Municipal Class EAs. MTCS archaeological sites data are available at archaeology@ontario.ca, and if your Master Plan project area exhibits archaeological potential or encompasses archaeological sites of high cultural heritage value or interest, these data should be used in the evaluation of alternatives.

Built Heritage and Cultural Heritage Landscapes

The MTCS [Criteria for Evaluating Potential for Built Heritage Resources and Cultural Heritage Landscapes](#) should be completed to help determine whether your Master Plan project may impact cultural heritage resources. The Clerk for the municipality encompassing the EA project can provide information on property registered or designated under the *Ontario Heritage Act* and municipal Heritage Planners can also provide information that will assist you in completing the checklist. A determination of whether the Master Plan project area impacts potential or known heritage resources of cultural heritage value or interest should be used in the evaluation of alternatives.

If subsequent project-driven Municipal Class EAs may impact potential or known heritage resources MTCS recommends that a Heritage Impact Assessment (HIA), prepared by a qualified consultant, should be completed to assess potential project impacts. Our Ministry's [Info Sheet #5: Heritage Impact Assessments and Conservation Plans](#) outlines the scope of HIAs. Please send the HIA to MTCS for review, and make it available to local organizations or individuals who have expressed interest in review.

Environmental Assessment Reporting

All technical heritage studies and their recommendations are to be addressed and incorporated into Master Plan projects. Please advise MTCS whether any technical heritage studies will be completed for your Master Plan project, and provide them to MTCS before issuing a Notice of Completion. If your screening has identified no known or potential cultural heritage resources, or no impacts to these resources, please include the completed checklists and supporting documentation in the Master Plan report or file.

Thank-you for consulting MTCS on this project: please continue to do so through the Master Plan process, and contact me for any questions or clarification.

Sincerely,

Jeff Elkow
Heritage Planner
jeff.elkow@ontario.ca

Copied to: Paul Javor, Drainage Engineer
City of Greater Sudbury
paul.javor@greatersudbury.ca

It is the sole responsibility of proponents to ensure that any information and documentation submitted as part of their Master Plan report or file is accurate. MTCS makes no representation or warranty as to the completeness, accuracy or quality of the any checklists, reports or supporting documentation submitted as part of the Master Plan process, and in no way shall MTCS be liable for any harm, damages, costs, expenses, losses, claims or actions that may result if any checklists, reports or supporting documents are discovered to be inaccurate, incomplete, misleading or fraudulent.

Please notify MTCS if archaeological resources are impacted by Master Plan project work. All activities impacting archaeological resources must cease immediately, and a licensed archaeologist is required to carry out an archaeological assessment in accordance with the Ontario Heritage Act and the Standards and Guidelines for Consultant Archaeologists.

If human remains are encountered, all activities must cease immediately and the local police as well as the Cemeteries Regulation Unit of the Ministry of Government and Consumer Services must be contacted. In situations where human remains are associated with archaeological resources, MTCS should also be notified to ensure that the site is not subject to unlicensed alterations which would be a contravention of the Ontario Heritage Act.