

Greater Sudbury Watershed Alliance

June 18, 2013

Input to City of Greater Sudbury 2014 Budget

Respectfully submitted by the Greater Sudbury Watershed Alliance Inc. (GSWA)

A. We recommend watershed and sub-watershed studies be a budget priority.

Rationale: City of Greater Sudbury (CGS) is a "City of Lakes".

B. GSWA recommends that no less than \$250,000 be allotted to Watershed Studies.

Rationale: A first step in protection and enhancement is to understand the impacts on our waterways. Council understands this and the recent motion to include watershed studies in the budget is a very forward looking.

C. GSWA recommends a permanent budget line identified as Watershed Studies be included in the CGS budget.

The rationale is that the priority for watershed and sub-watershed studies is Lake Ramsey since it is a drinking water source and is impacted by storm water and new development. Nevertheless, the city needs to carry watershed studies forward year by year, lake by lake.

The Official Plan calls for watershed studies on several urban and suburban lakes. GSWA recommends that the OP list be accepted as the order of priority for watershed studies except that Ramsey Lake is moved to first place.

OP 8.6.2

2. Subwatershed plans will be developed as funding permits for the following subwatersheds which are ranked in their order of priority:

- a. Nepahwin/Robinson;*
- b. Ramsey Lake;*
- c. Whitson River;*
- d. Azilda;*
- e. Richard Lake;*
- f. Junction Creek;*
- g. Mud Lake;*
- h. Simon/McCharles Lake;*

- i. Chelmsford;
- j. Whitson Lake;
- k. Garson;
- l. Meatbird Creek - Lively;
- m. Coniston;
- n. Wanapitei;
- o. Dowling;
- p. Copper Cliff; and,
- q. Kelley Lake.

The priority ranking for subwatershed plans may change based on the results of the Source Water Protection process or in response to new information.

3. All subwatershed plans will incorporate the primary objective of no net increase in peak flow rates, unless a more stringent criterion has been identified. Subwatershed plans will also assess means of stormwater quality control to ensure the protection of urban subwatersheds and provide opportunities to improve the quality of receiving waterbodies.

- D. GSWA recommends a collaborative and open approach to watershed studies involving CGS staff and council along with stakeholders including GSWA and CLS (Coalition for a Liveable Sudbury), Conservation Sudbury, Laurentian University and the development industry.**

Rationale: In the long run, understanding and knowledge of the process will help further the cause of protection and enhancement of our "City of Lakes". Also it is likely that provincial standards for water body protection may not be high enough to meet the needs of our area with thin soil, surface bedrock and re-vegetation in progress. We may need to work together to establish "made in Sudbury standards".

Contact:

Lesley Flowers, Chair - Greater Sudbury Watershed Alliance



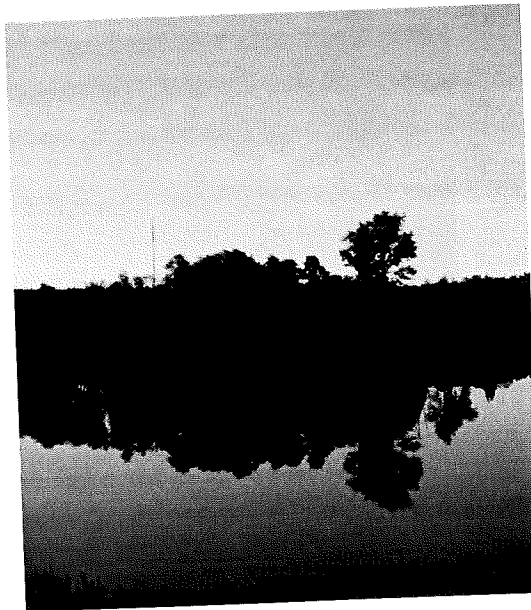
Greater Sudbury Watershed Alliance

City of Greater Sudbury 2014 Budget Input
June 18, 2013

Sudbury: "The City of Lakes"

A City of Opportunities:

- Swimming
- Fishing
- Boating
- Sailing
- Canoeing
- Kayaking
- Nature Hiking
- Biodiversity
- Tourism
- Safe Drinking Water



Beach closures and water advisories
are devastating to communities....

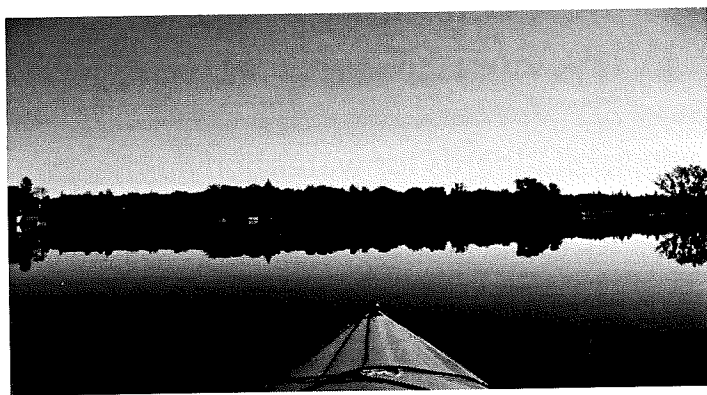
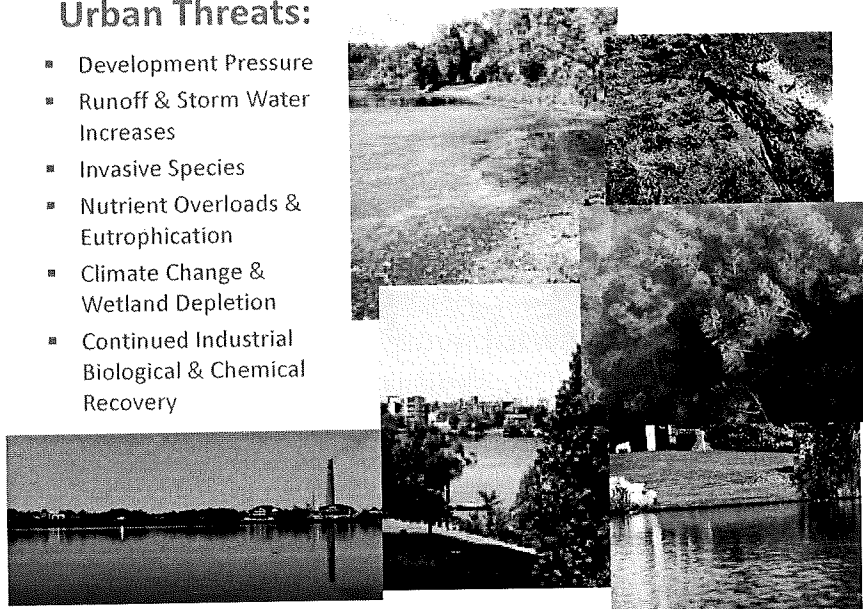


Ramsey Lake Blue-Green Algae Bloom

Sudbury lakes – because of mining history,
urbanization, and climate change – face many risks
and impacts.

Urban Threats:

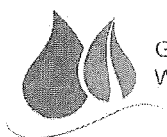
- Development Pressure
- Runoff & Storm Water Increases
- Invasive Species
- Nutrient Overloads & Eutrophication
- Climate Change & Wetland Depletion
- Continued Industrial Biological & Chemical Recovery



Moving forward with Watershed Studies...

Adaptive strategies require a proactive and collaborative approach towards economically, environmentally, and socially sustainable watersheds

Stakeholder Collaboration



Greater Sudbury
Watershed Alliance



Coalition for a
Liveable
Sudbury



Conservation
Sudbury



Laurentian University
Université **Laurentienne**

Why Watershed Studies?

- Provincial standards for water body protection may be insufficient for Sudbury's unique soil, surface bedrock and re-greening processes
- Understanding our distinctive watershed is a first step in protecting and enhancing our city's most valuable natural resource – our water
- Ramsey Lake – the city's drinking water source – is continuously impacted by storm water and new development

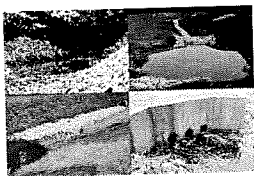
Where to begin?

- Set watershed and sub-watershed studies as a budget priority
- Accept the Official Plan lake priority list, while moving Ramsey Lake to the top
- Allot \$250 000 to move forward with Ramsey Lake watershed studies
- Place watershed and sub-watershed plans into the permanent budget line to be carried forward year by year and lake by lake until completion

How?

'Hard' Solutions

Developmental engineering and capital consultations – city staff and outside expertise



'Soft' Solutions

Integrative approaches for storm water management and shoreline solutions – city staff and collaborators

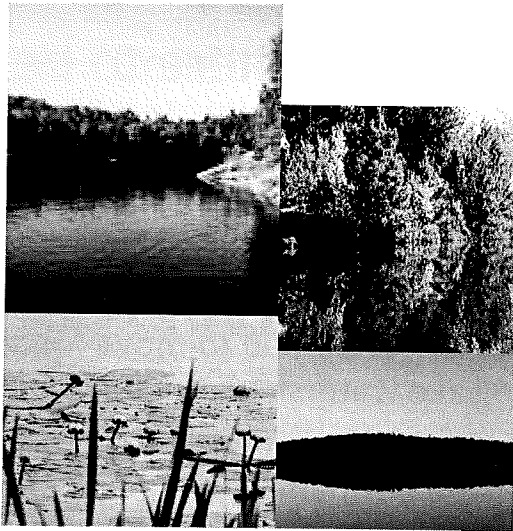


Thank-You!

- 83% of Canadians are concerned about water quality
- 68% believe water quality is deteriorating rapidly

The Royal Canadian Geographical Society. 2011.
Watersheds of Canada. Canadian Geographic
Enterprises. Ottawa, Ontario.

Thank-You for
prioritizing Sudbury's
water resources



Greater Sudbury
Watershed Alliance