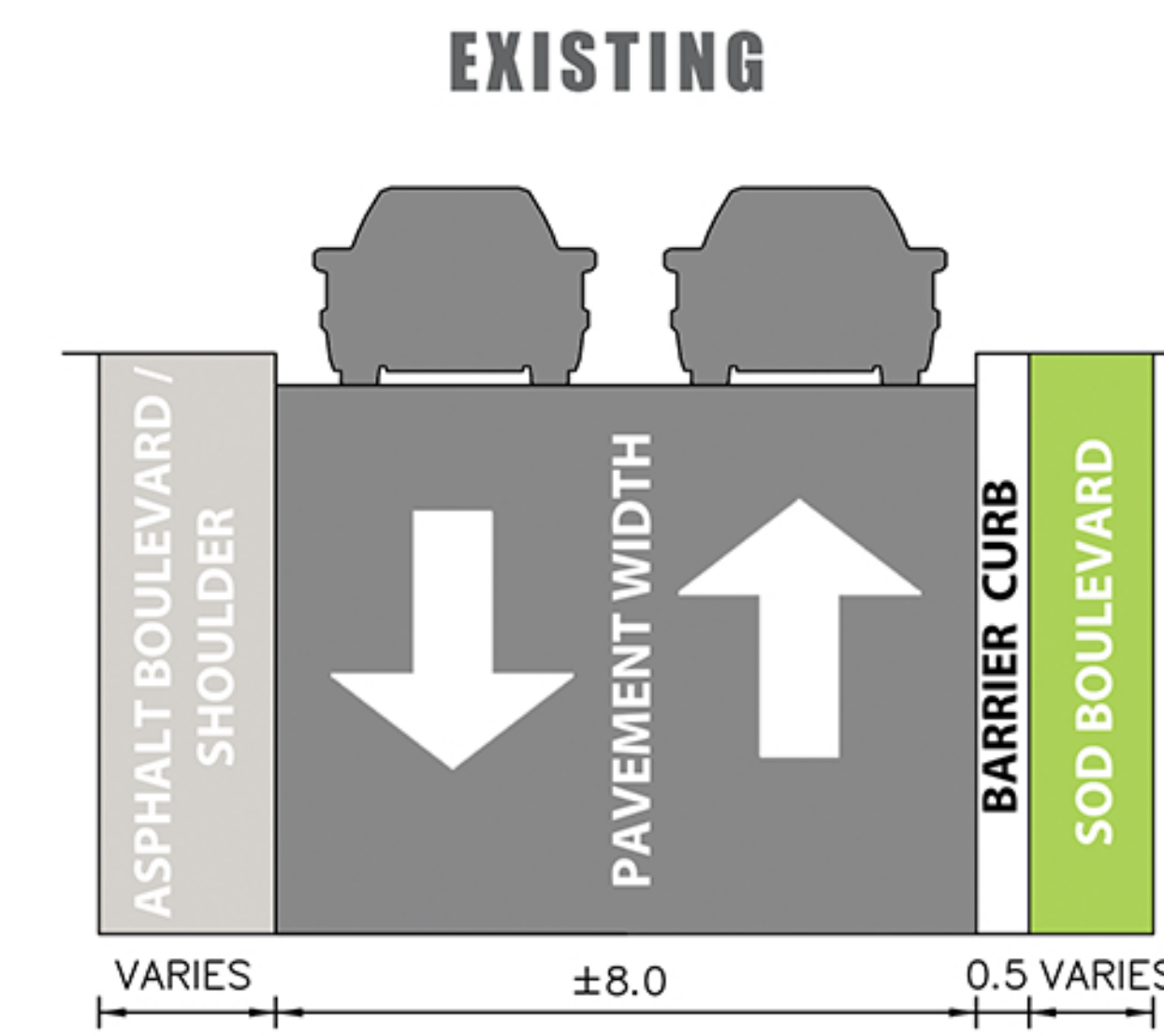
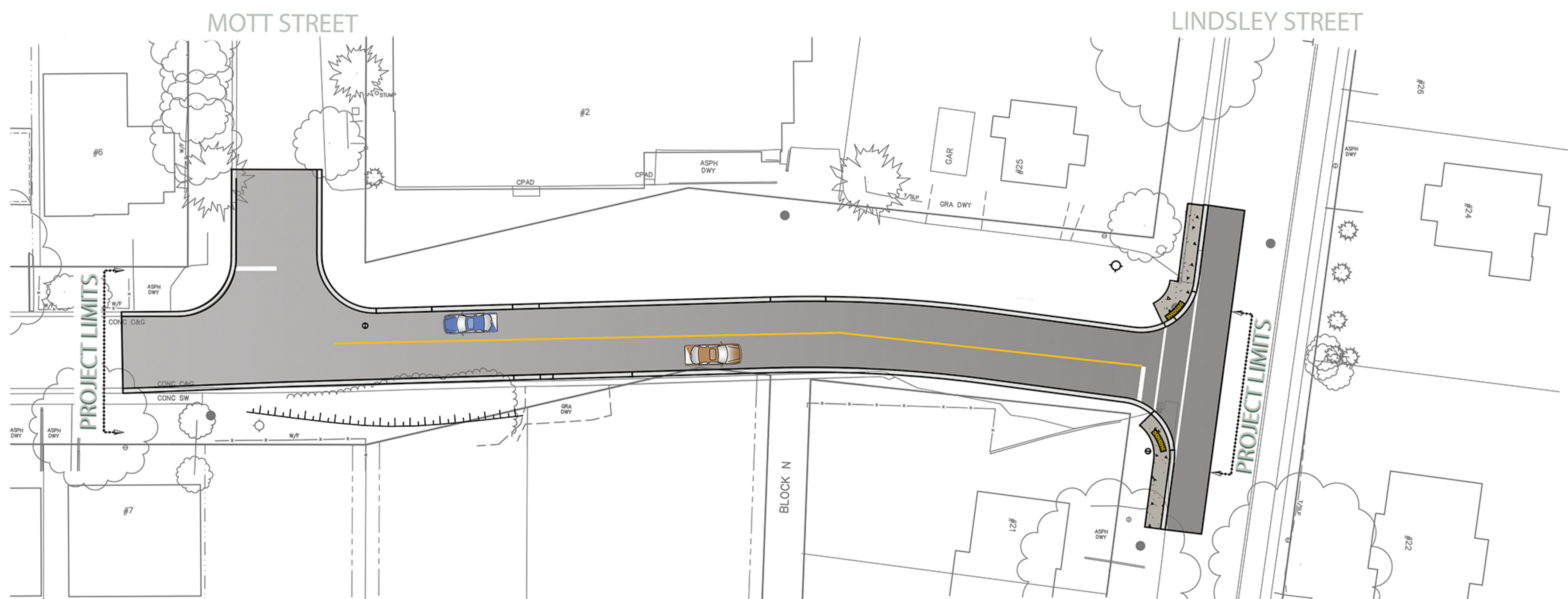
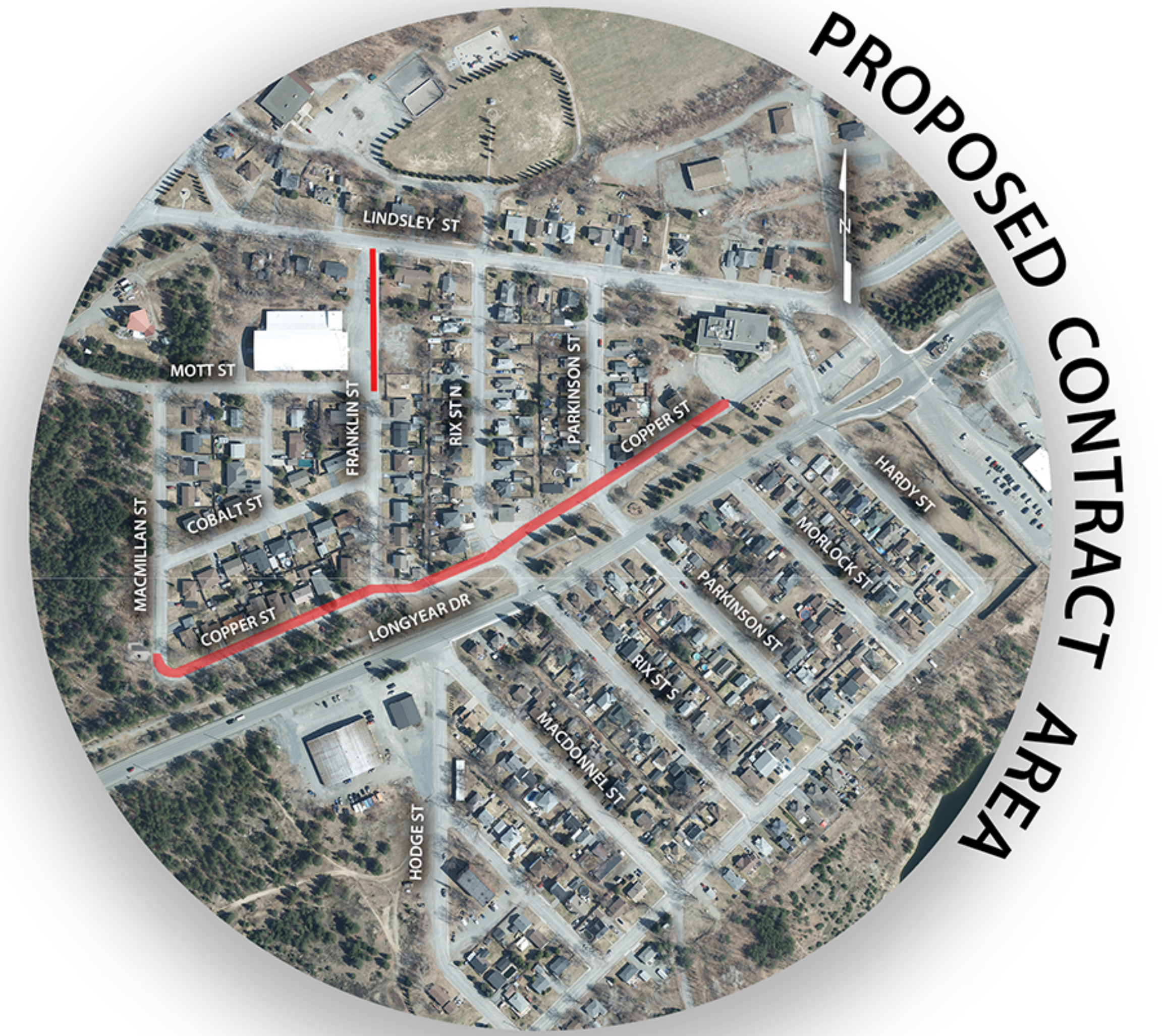
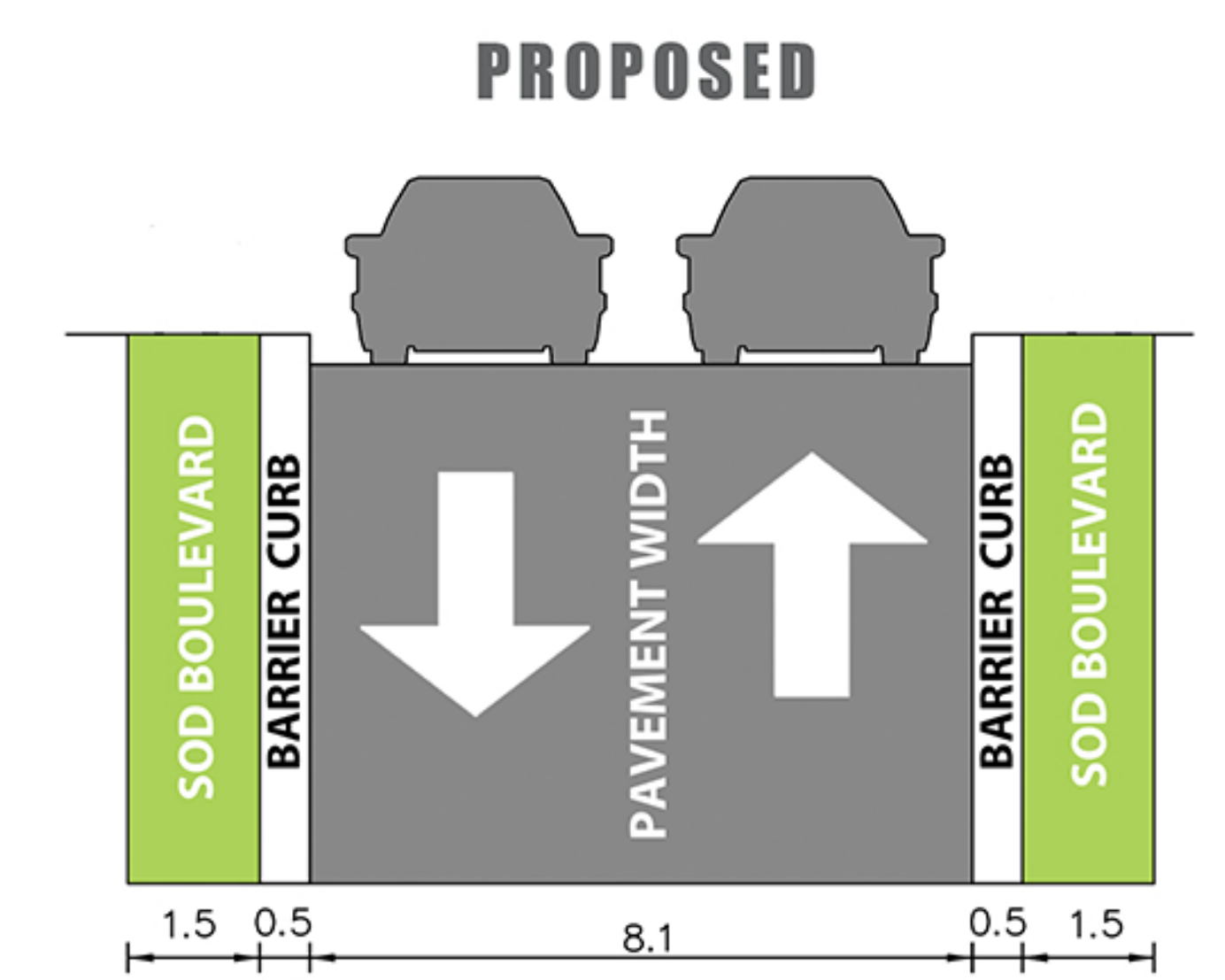


PROJECT HIGHLIGHTS

- Watermain looping
- Full depth asphalt removal
- Supply and placement of asphalt
- New curbs (Urbanization)



**FRANKLIN STREET
MOTT ST TO LINDSLEY ST
N.T.S.**



**FRANKLIN STREET
MOTT ST TO LINDSLEY ST
N.T.S.**



FRANKLIN STREET MOTT STREET TO LINDSLEY STREET ROAD REHABILITATION

