

# Recreation Map Application How-to Guide

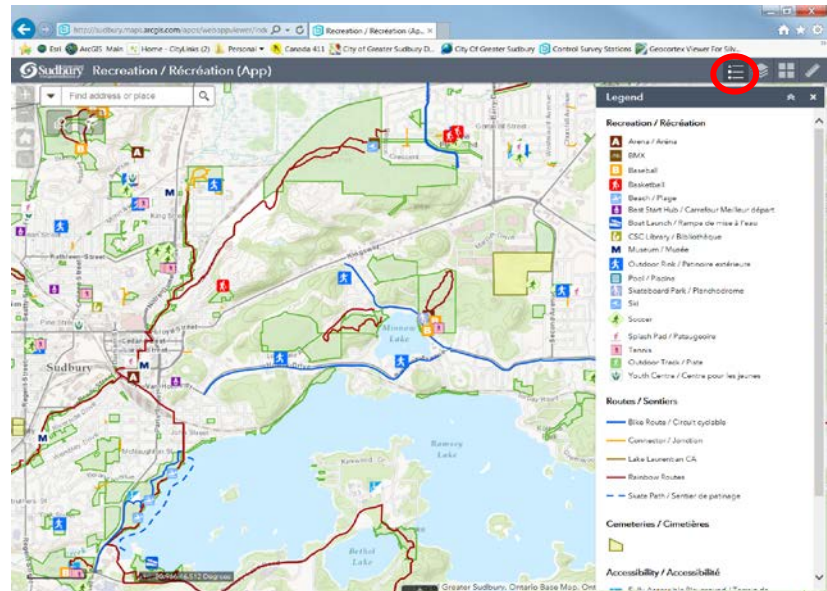
This document will assist in the navigation of this map application.

Below is a description of the icons in the top right hand corner of the page.



**Legend** – click on this icon to open the legend and to view the symbols depicted on the map.

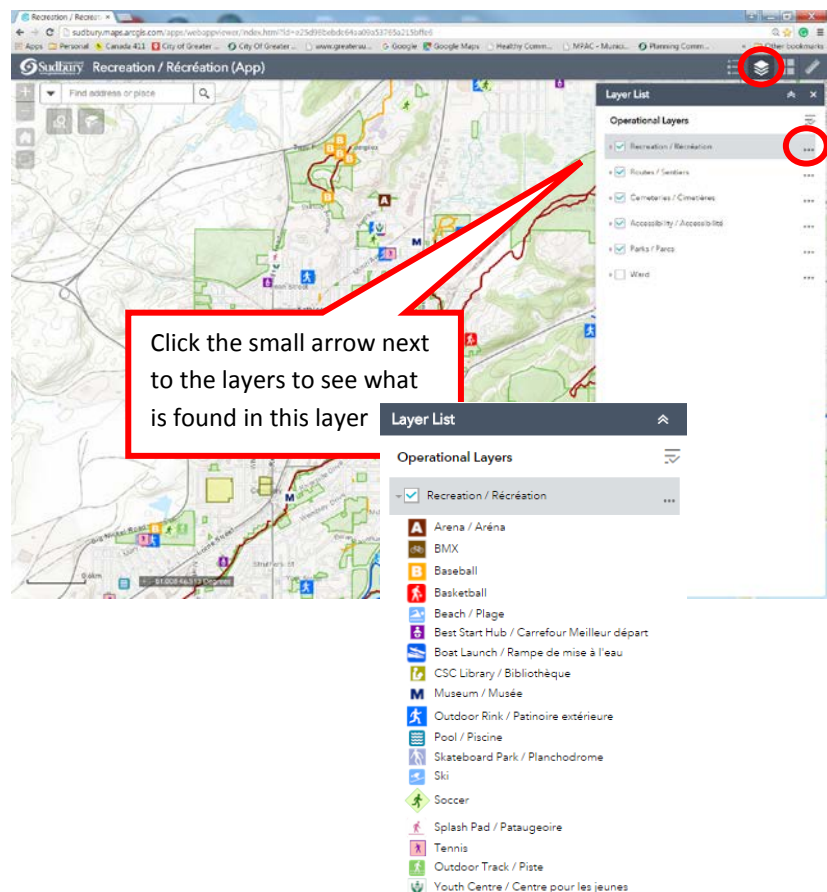
The symbology will change in both the legend and the map as you zoom in and out.



**Layer List** – check or uncheck different layers depending on which information you would like displayed on the map.

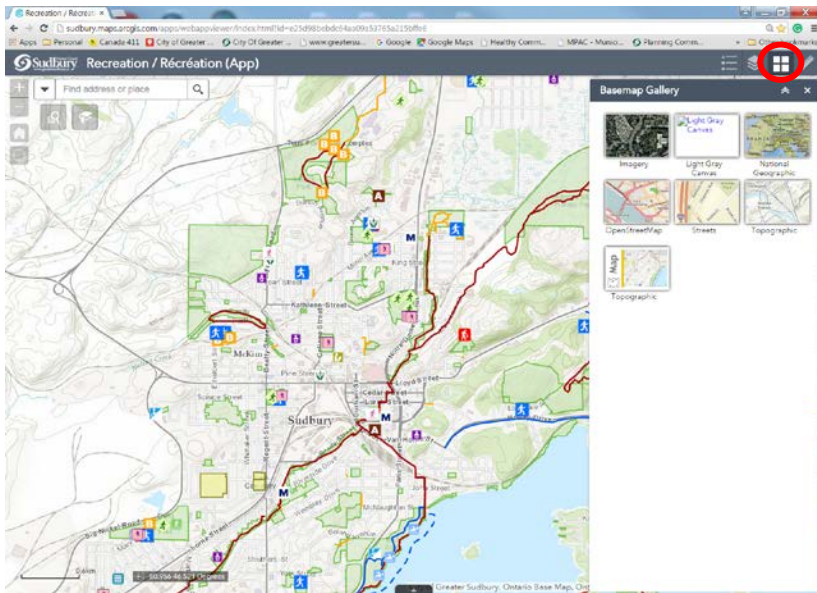


Try clicking on the '...' symbol to see the other options for each layer. For example, Open Attribute Table opens a table and lists the features and its corresponding information in a table format. You can also adjust the Transparency as well as the drawing order of the layers here by clicking 'Move up' or 'Move Down'.

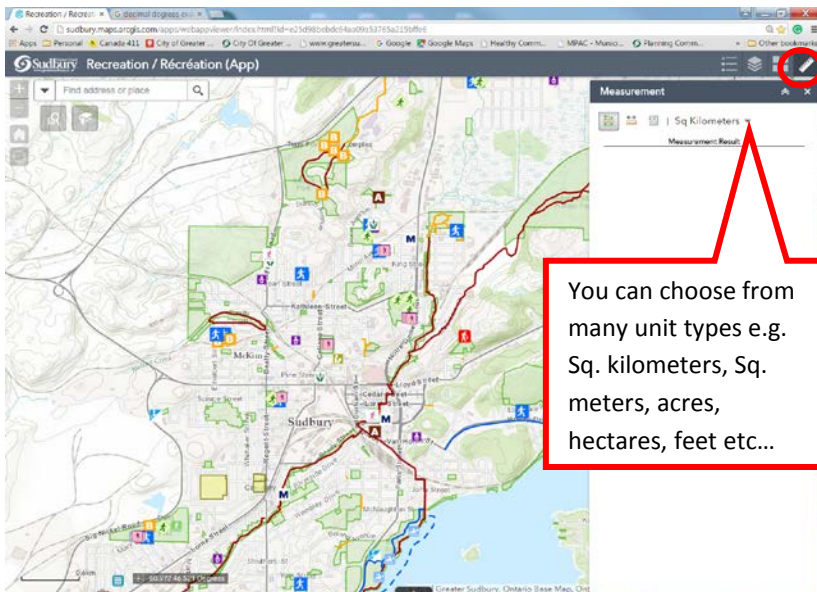




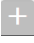
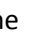

**Basemap Gallery** – this application has a topographic basemap as a default. If satellite imagery or another type of basemap is desired, it can be selected here.



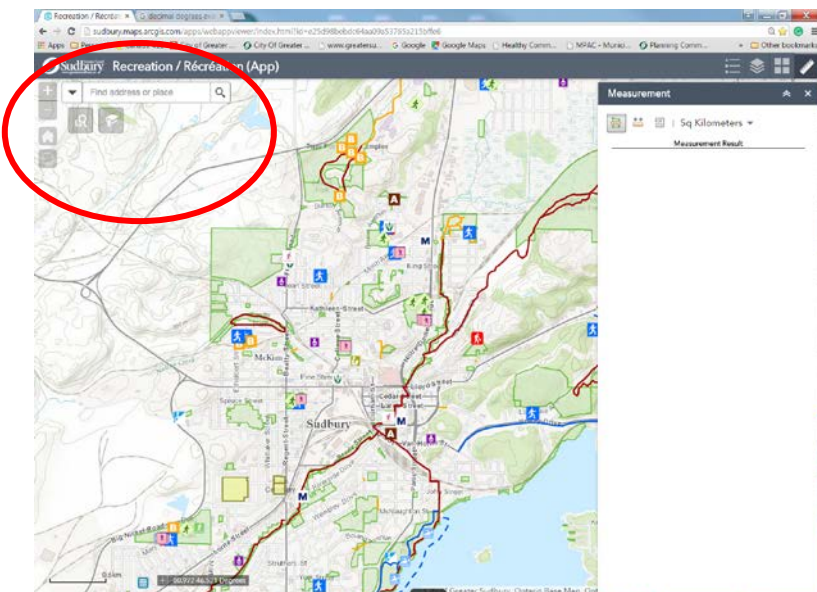
**Measurement** – this tool allows you to measure an area, a distance, and get a geographic location of a point in degrees or degrees, minutes, and seconds.




## Map Navigation Tools

On the left side of the map, there are icons to **Zoom In** , **Zoom Out** , and go to the **Default Extent**  of the map.

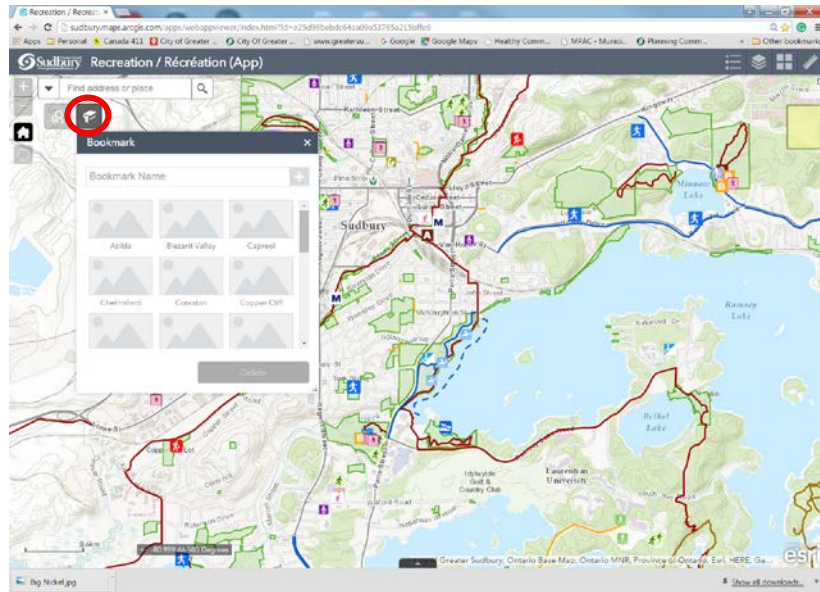
There is also a **Search** field that allows you to search for a specific address or place, such as a library or school




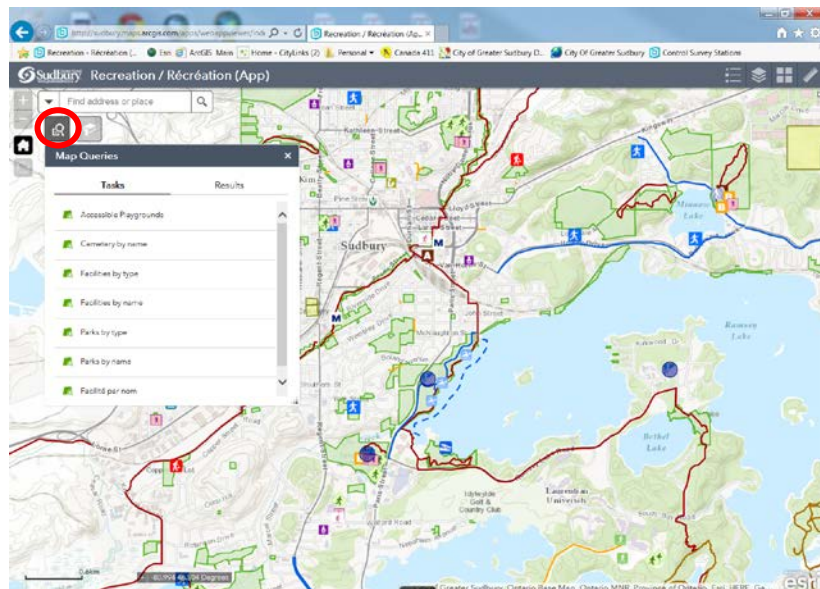



The **Bookmark** icon  allows you to zoom to one of the City's many communities e.g. Azilda, Lively, Hanmer or Sudbury.

You can add and delete your own bookmarks for use in your view of the map as well. For example, bookmark your house or neighbourhood and give it a name significant to you, such as My Place.

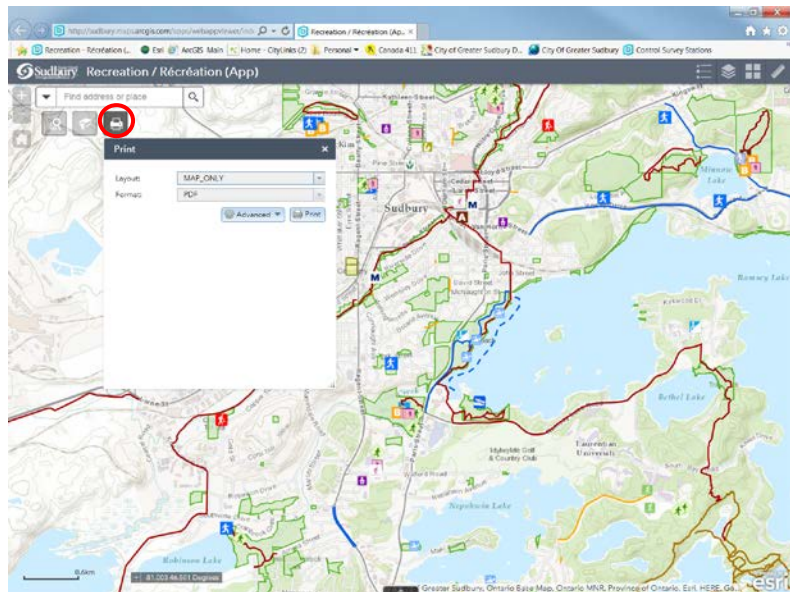


The **Map Queries** tool  enables you to search for a specific park, playground, or recreation facility by name or type. For example, if you wish to search for accessible playgrounds within the City of Greater Sudbury, click on Accessible Playgrounds, select the spatial filter of the area you would like to search, and click on the Execute button. A list of accessible parks is displayed and all the sites are highlighted in purple. To zoom to a specific park, click on the name in this list, and it will bring you to that location. Alternatively, pan around the map and click on the desired highlighted location or any other recreation feature to display a pop-up window with information on the site.



The **Printer** tool  enables you to print a copy of your map. There are a variety of page size choices and both landscape and portrait orientations. A pdf will be created, which can be opened and printed, as well as saved for future use.

Note: If a large geographic area is desired, the entire legend may not appear on the map due to some page size restrictions, especially the ANSI A Landscape and A4 Landscape options.



Please let us know if we can help or how we can improve this web map application.

Contact us here:

[GISPlanning@greatersudbury.ca](mailto:GISPlanning@greatersudbury.ca)