



# TRANSMITTAL

DATE: March 28, 2025

SEND VIA: Electronic Delivery

PAGE 1 OF 1

TO: Mr. Shawn Chretien

RE: 2024 Summary Report Vale Base Metals

ATTN: CC: Sarah Deadman

We enclose the following:

NO. OF COPIES	DOCUMENT/ DRAWINGS	DESCRIPTION
1	Documents	Summary Report for Vermilion Water Treatment Plant for the 2024 calendar year as required under Schedule 22 of O. Reg. 170/03.  This report is for information only and posting is not required as per MECP legislation.

**COMMENTS:**

Should there be any questions please feel free to contact me directly at 682-8247.

Thanks,

Name: **Wendy Wisniewski**

Water Plants  
Ontario Operations

March 28, 2025

Mr. Jack Larche  
Superintendent Water Treatment  
North Atlantic Operations

Please find the attached 2024 Summary Report for the Vermilion Water Treatment Plant and Systems. This report is in accordance with legislation O. Reg. 170/03 which requires an annual Summary Report to be prepared no later than March 31<sup>st</sup> for the preceding calendar year.

The report must be provided to the board of directors (or designate) of a corporation if privately owned, and to any system or municipality who receives water from the owner's treatment facilities. The report must list requirements of the Act, the regulations, system's approval and any order that the system failed to meet at any time during the report period. It must specify the actions and measures taken to correct the failures if any.

For the purpose of enabling the owner to assess the capabilities and planned uses of the system the following information is also provided; a summary of the quantities and flow rates of water supplied, monthly averages, maximum daily flows, and instantaneous peak flow rates with a comparison of the summary of flow rates to the rated capacities in the systems approval.

This report identifies several areas of improvement and dedication by the staff to continue to strive to produce the best possible product for Vale Base Metals and the community we serve. The continued upgrades to this facility in terms of equipment, communication and connectivity to the larger complex will aid in the transfer of data as well as enhance overall monitoring. We are underway with a study to look at current and future water demands both within Vale as well as with the City of Greater Sudbury and surrounding communities.

Should you have any questions or require any clarification, please contact me directly.

Thank you,



---

Wendy Wisniewski  
Senior Environmental Analyst  
Vale Base Metals



# **SUMMARY REPORT**

## **Schedule 22**

Vermilion Water Treatment Plant  
Ontario Regulation 170/03  
March 31, 2025

# SCHEDULE 22



**Safe Drinking Water Act, 2002**  
**ONTARIO REGULATION 170/03**  
*Last amendment: O. Reg. 509/17.*  
**DRINKING-WATER SYSTEMS**

SCHEDULE 22  
SUMMARY REPORTS FOR MUNICIPALITIES  
Municipal: Large Residential and Small Residential

# SCHEDULE 22



**Safe Drinking Water Act, 2002**  
**ONTARIO REGULATION 170/03**  
*Last amendment: O. Reg. 509/17.*  
**DRINKING-WATER SYSTEMS**

SCHEDULE 22  
SUMMARY REPORTS FOR MUNICIPALITIES  
Municipal: Large Residential and Small Residential

# **SUMMARY REPORT**

## **Schedule 22**

Vermilion Water Treatment Plant  
Ontario Regulation 170/03  
March 31, 2025

## **Table of Contents**

1. Introduction
2. Vermilion Water Treatment Plant Operational Requirements
3. Legislation Requirements
4. Executive Summary
5. Distributions Systems & Flow Summaries

## **1.0 Introduction**

The purpose of this report is to provide senior management of Vale's Base Metals Water Plants with the Vermilion Water Treatment Plant's drinking water systems status and capacities. This report lists the requirements of the Safe Drinking Water Act (SDWA), the regulations, the Plant's compliance to the Act and Regulations, and any order from the Ministry of Environment, Conservation and Parks (MECP) that the system failed to meet during the period covered by the report. Should a failure of the system be identified the measures that were taken to correct the failure will be identified.

This report will also list a summary of the quantities and flow rates of the water supplied during the period covered by the report, including monthly averages, maximum daily flows and daily instantaneous peak flow rates, with a comparison to the rated capacity of the system. This will enable the reader of the report to assess the capability of the system to meet existing and future planned uses of the system.

In accordance with the Ministry of Environment, Conservation and Parks (MECP) regulation 170/03, the reporting period for this report is January 1<sup>st</sup>, 2024 to December 31<sup>st</sup>, 2024

This Summary Report is required by the MECP and is filed annually for the previous calendar year. An "Annual Report", to fulfill Section 11 of Ontario Regulation 170/03, has been completed separately and provides the details of drinking water quality at the Vermilion Water Treatment Plant. This annual report is available for viewing on site at VALE's Base Metals Supervisor's office by contacting 705-682-6548.

### **Purpose**

As stated in the introduction this report is required by the Ministry of Environment, Conservation and Parks (MECP), and is filed annually for the previous calendar year and satisfies Ontario Regulation 170/03, sch. 22.

## **2.0 Vermilion Water Treatment Plant Operational Requirements**

### **System**

VALE's Base Metals Vermilion Water Treatment Plant is located off Regional Road 24, at 1040 Wavell Street across from the VALE Base Metals Creighton Mine turnout. The Vermilion Water Treatment Plant produces potable water for:

- VALE Base Metals Operations – Creighton Mine, Nickel Refinery, Copper Refinery, Smelter, South Mine, North Mine, Clarabelle, Tailings Area and the
- City of Greater Sudbury-Copper Cliff, Lively, Naughton, Whitefish & Atikameksheng Anishnawbek First Nations

The Vermilion Water Treatment Plant provides water to the City of Greater Sudbury which serves more than 10,000 people with the treated water. Therefore, the Vermilion Water Treatment Plant is designated Large Municipal Residential. The Vermilion Plant obtains its water supply from a surface water source. The surface water source is the Vermilion River. Under Ontario Regulation 170/03 the general obligations of the Vermilion Water Treatment Plant are:

1. **Filtration.** The Vermilion Water Treatment Plant has treatment equipment that is designed to be capable of chemically assisted filtration. Use of conventional filtration, the treatment consists of chemical coagulation with Alum, polymer, rapid mixing, flocculation and sedimentation followed by rapid sand filtration. The Vermilion Water Treatment Plant uses chemical coagulant at all times when plant is in operation, monitors and adjusts chemical dosages in response to variations in raw water quality; maintains effective filter backwashes, ensures that the effluent turbidity requirements are met at all times by continuously monitoring filtrate turbidity from each filter; and target filtered water turbidities of less than or equal to 0.3 NTU in 95% of the measurements each month. It is also designed to be capable of achieving, at all times, primary disinfection in accordance with the Ministry's Procedure for Disinfection of Drinking Water in Ontario, including at least 99 per cent removal or inactivation of *Cryptosporidium* oocysts, at least 99.9 per cent removal or inactivation of *Giardia* cysts and at least 99.99 per cent removal or inactivation of viruses by the time water enters the distribution system.
2. **Primary Disinfection.** Vermilion Water Treatment Plant is operated so that a disinfectant residual is maintained in the distribution system. This results in a persistent disinfectant residual that protects the water from microbiological re-contamination, reduces bacterial regrowth, controls biofilm formation and serves as an indicator of distribution system integrity (loss of disinfectant residual indicating that the system integrity has been compromised). Chlorine provides a persistent disinfectant residual that is used for the maintenance of a residual in the distribution system. The Vermilion Water Treatment Plant is therefore capable of primary disinfection because of its use of liquefied chlorine for chlorination in accordance with the Ministry's *Procedure for Disinfection of Drinking Water in Ontario* and is therefore designed to be capable of achieving, at all locations within the City of Greater Sudbury's Vermilion Distribution System a free chlorine residual of 0.2 milligrams per liter. The Vermilion Water Treatment Plant is also capable of achieving, at all locations within VALE Base Metals Plumbing System a free chlorine residual of 0.2 milligrams per liter.
3. **Operation of Plant.** The Vermilion Water Treatment Plant is operated:
  - 1) ensuring that whenever water is being supplied by the plant the water treatment equipment is in operation and
  - 2) that the treatment equipment is operated in accordance with the Ministry's *Procedure for Disinfection of Drinking Water in Ontario*.
  - 3) that the treatment plant is in accordance with Municipal Drinking Water License 191-101 issue number 3 dated February 23, 2021 and the Drinking Water Work Permit 191-201 issue number 3 dated February 23, 2021.
  - 4) that the water treatment equipment is operated in a manner that achieves the design capabilities
  - 5) that the water treatment equipment provides chlorination for secondary disinfection
  - 6) that the equipment is operated so that, at all times and at all locations within the City of Greater Sudbury Vermilion Distribution System the free chlorine residual is never less than 0.05 milligrams per liter.
  - 7) Adjustments to the water treatment equipment are carried out only by certified operators.
4. **Operational Checks, Sampling, Testing and Maintenance.** The Vermilion Water Treatment Plant performs operational check, sampling, testing and maintenance in accordance with Ontario Regulation 170/03. The following section outlines compliance to:
  - 1) Sample locations

- 2) Sampling frequency
- 3) Sample handling
- 4) Sampling equipment
- 5) Sampling laboratories
- 6) Interpretation of Sample Test Results
- 7) Sampling records, and
- 8) Equipment maintenance.

**Sample locations:**

Samples are taken from the point at which water enters the drinking-water systems, distribution system or plumbing works that are connected to the drinking-water system. Microbiological samples and chlorine residual are required to ensure safe drinking water. A water sample is taken and tested for a microbiological parameter, and another sample is taken at the same time from the same location and is tested immediately for free chlorine residual.

Sampling methods. The samples can be taken in the form of grab samples or by a continuous sampler. Continuous monitoring is used for:

- (a) turbidity;
- (b) fluoride; and
- (c) free chlorine residual

**Sampling frequency:**

The continuous monitoring equipment complies with standards for minimum testing and recording frequency specified in the table below.

Parameter	Minimum Testing Recording Frequency	Maximum Alarm Standard	Minimum Alarm Standard
Free chlorine residual required to achieve primary disinfection	5 minutes	Not applicable	0.1 milligrams per litre less than the concentration of free chlorine residual that is required to achieve primary disinfection
Turbidity	15 minutes	1.0 Nephelometric Turbidity Units (NTU) above 15 minutes	Not applicable

**Sample handling:**

All samples are taken and handled in accordance with the directions of the laboratory to which the sample will be delivered for testing, including directions with respect to,

- (a) collection procedures;
- (b) the use of specified kinds of containers or of containers that are provided by the laboratory;
- (c) the labelling of samples;
- (d) the completion and submission of forms that are provided by the laboratory;
- (e) methods of transporting samples, including temperature conditions that must be maintained during transportation; and
- (f) time periods for delivery of samples.

**Sample Equipment:**

Chlorine residual testing is done by a certified operator using a HACH DR / 2800 spectrophotometer. Continuous monitoring is carried out at locations that have been identified as appropriate by the Ontario Regulation 170/03. Continuous monitoring is carried out on chlorine residual, turbidity and fluoride.

- (a) Chlorine Residual. Sampling and testing for free chlorine residual is carried out by continuous monitoring equipment at a location where the intended contact time has just been completed. This is done in accordance with the Ministry's *Procedure for Disinfection of Drinking Water in Ontario*. The Vermilion Water Treatment Plant provides secondary disinfection with chlorination and an "on-line" distribution analyzer is located within the City of Greater Sudbury's distribution network and continually tests for free chlorine residual. The SCADA system is programmed to monitor CT values and alarm if CT is not being met as per MECP chlorination guidelines.
- (b) Turbidity. Sampling and testing for turbidity is carried out by continuous monitoring equipment on the clarifier, each filter effluent line and finished water. All turbidity testing is conducted using a turbidity meter that measures turbidity in Nephelometric Turbidity Units (NTU)
- (c) Fluoridation. Sampling and testing for fluoride is carried out by continuous monitoring equipment. Grab samples are taken at the end of the fluoridation process at least (1) time per shift. The grab sample is tested for fluoride with a bench meter. The target concentration of fluoride is between 0.6 and 0.8 milligrams per litre at the end of the fluoridation process.

**Sampling Laboratories.** Testing of a water sample is done by a laboratory that was identified to the Director in a written notice to said Director.

1. Testmark Laboratories LTD.  
7 Margaret St., Garson, Ontario  
Canada, P3L 1E1 Phone: (705) 693-1121

**Interpretation of Sample Test Results:**

All testing is carried out and interpreted by a certified operator or water quality analyst. Bench scale test results, as well as, continuous monitoring test results are examined each shift (well within the 72 hours after sampling and testing) by a certified operator. The continuous monitoring equipment has an alarm that sounds if the equipment malfunctions or loses power or a test result for a parameter is above or below the maximum alarm standard at:

- the location where the equipment conducts tests.
- and in the Vermilion Water Treatment Plant Control Room where a certified operator is present.

If any of the testing equipment malfunctions or loses power or a test result for a parameter is above or below the maximum alarm standards, the certified operator takes appropriate action.

**Sampling Records.** Every sample that is taken has a record made stating the date and time the sample was taken, the location where the sample was taken and the name of the person who took the sample. This does not apply to a sample tested by continuous monitoring equipment.

**Equipment maintenance.** An Engineering report was prepared on May 31<sup>st</sup>, 2001. After the engineer inspected the plant, the resulting report ensured compliance:

- 1) with Schedule 2 was being provided, and
- 2) compliance with Schedule 6 for operational checks.

- 3) with a maintenance schedule that sets out requirements relating to the frequency with which the water treatment must be inspected, tested and replaced.

The continuous monitoring equipment, as well as, the flow measurement equipment is checked and calibrated in accordance with the manufacturer’s instructions by Ontario Mill, Tailings and Water Plant Instrumentation Department personnel and outside certified agencies. We follow a CMMS system for work orders and Preventative Maintenance Scheduling/tracking.

**Compliance**

Compliance to Safe Drinking Water Act and its associated Regulations:

1. There were no adverse test results requiring notification during this reporting period.
2. A minimum of 52 weekly samples for microbiological testing was completed as required under section 10-3 & 10-4 in 2024.
3. All operational testing required under Schedule 7 in 2024 were completed.
4. There was additional testing required by an approval or order in 2024 under section 5.2, Table 7 of Municipal Drinking Water License #191-101 issue number 3. The additional tests are in regard to Total Suspended Solids (TSS) and total chlorine residual being discharged to the environment as part of the existing process. Sampling to review TSS levels was initiated in 2008 and continued to date. Total Chlorine on the raw of water reporting to the natural environment commenced September 2021.
5. All required Organic parameters were tested for in 2024 and none exceeded the levels outlined in Safe Drinking Water Act, 2002 – Ontario Regulation 169/03 Ontario Drinking-Water Quality Standards.
6. All required inorganic parameters were tested for in 2024 and none exceeded the levels outlined in Safe Drinking Water Act, 2002 – Ontario Regulation 169/03 Ontario Drinking-Water Quality Standards.
7. Reduction in pre and post chlorine levels to reduce trihalomethanes and haloacetic acids in the Vermilion Distribution system

**3.0 Legislative and Regulation Requirements**

**Safe Drinking Water Act, 2002, S.O. 2002, c.32**

Commencement of this Act:

The date of Royal Assent was December 13<sup>th</sup>, 2002. Sections 1 to 170 of the Act come into force on a day to be named by proclamation of the Lieutenant Governor.

		O. Reg.	Latest Amendments
	SAFE DRINKING WATER ACT, 2002		
1	Certification of Drinking-Water System Operators and Water Quality Analysts	128/04	819/21
2	Compliance and Enforcement	242/05	328/08
3	Definitions of “Deficiency” and “Municipal Drinking-Water System”	172/03	209/19
4	Definitions of Words and Expressions Used in the Act	171/03	336/13
5	Drinking-Water Systems	170/03	269/22
6	Drinking-Water Testing Services	248/03	821/21
7	Financial Plans	453/07	69/08

8	Licensing of Municipal Drinking Water Systems	188/07	325/08
9	Municipal Residential Drinking Water Systems in Source Protection Areas	205/18	67/24
10	Ontario Drinking-Water Quality Standards	169/03	457/16
11	Schools, Private Schools and Child Care Centers	243/07	459/16
12	Service of Documents	229/07	368/21

The following Regulations are associated with the Safe Drinking Water Act, 2002, S.O. 2002, c.32

1. **O. Reg. 128/04 Certification of Drinking-Water System Operators and Water Quality Analysts**

*This Regulation was filed on May 14, 2004 (Amended to 819/21).* In 2009, Section 29 listing Operator training requirements and the number of training hours required came into force. Class III Water Treatment will require 14 hours of continuing education with an additional 26 hours of on-the-job practical training.

The continuing education that is used to meet the training requirements must be approved by the Director using criteria which includes the following:

- a. The training course must have documented learning objectives.
- b. The training course must be planned and be provided by a qualified training provider.
- c. The training course must include a means to verify that the participants have learned the material covered in the course
- d. The training course must cover subject matter that is directly related to the duties typically performed by an operator.

The on-the-job practical training that is used to meet the training requirements must meet criteria that includes the following:

- a. The training must have documented learning objectives.
- b. The training must be provided by a trainer with expertise in the subject matter that is being covered.
- c. The training must be in respect of subject matter that is directly related to the duties typically performed by an operator

**Note:** The annual number of hours of training set out in the Table to this section may be averaged over the three years during which an operator's certificate is valid but shall not be reduced or prorated for an operator who is employed on a part-time basis.

ANNUAL TRAINING FOR OPERATORS

Type and Class of Subsystem Where the Operator is Employed	Training Requirements	Minimum Total Hours
Limited Groundwater or Limited Surface Water	7 hours or more of continuing education, with the remaining hours to at least the minimum total as on-the-job practical training	20
Class I Water Treatment or Class I Distribution or Class I Distribution and Supply	7 hours or more of continuing education, with the remaining hours to at least the minimum total as on-the-job practical training	30
Class II Water Treatment or Class II Distribution or Class II Distribution and Supply	12 hours or more of continuing education, with the remaining hours to at least the minimum total as on-the-job practical training	35
<b>Class III Water Treatment or Class III Distribution or Class III Distribution and Supply</b>	<b>14 hours or more of continuing education, with the remaining hours to at least the minimum total as on-the-job practical training</b>	<b>40</b>
Class IV Water Treatment or Class IV Distribution or Class IV Distribution and Supply	14 hours or more of continuing education, with the remaining hours to at least the minimum total as on-the-job practical training	50

O. Reg. 128/04, s. 29, Table.

2. **O. Reg. 242/05 Compliance and Enforcement**

Ontario regulation 242/05 (Amended to O. Reg 328/08). This regulation lists the requirements for inspections. What to do when deficiencies and contraventions are found. This regulation also deals with enforcement, investigations and notices required once investigations have been completed.

3. **O. Reg. 172/03 Definitions of “Deficiency” and “Municipal Drinking-Water System”**  
Ontario regulation 172/03 (Amended to O.Reg 209/19). Provides definitions of words and expressions within the Safe Drinking Water Act and associated Regulations.
4. **O. Reg. 171/03 Definitions of Words and Expressions Used in the Act**  
Ontario regulation 171/03 (Amended to O.Reg 336/13). Provides definitions of words and expressions within the Safe Drinking Water Act and associated Regulations.
5. **O. Reg. 170/03 Drinking-Water Systems**  
*This Regulation was filed on 10/02/2004.* Ontario Regulation 170/03 is amended to O.Reg 269/22. This regulation outlines the requirements for:
  - 1) Types of Drinking Water Systems
  - 2) Required reports (annual, summary reports)
  - 3) Retention of records
  - 4) Treatment equipment requirements
  - 5) Types of Treatment
  - 6) Operational Checks, Sampling and Testing
  - 7) Use of accredited laboratories
  - 8) Maintenance and Operational
  - 9) Microbiological Sampling and Testing
  - 10) Chemical Sampling and Testing
  - 11) Reporting Adverse Test Results and Other Problems
  - 12) Corrective Action
  - 13) Engineers' Reports
  - 14) Inorganic Parameters
  - 15) Organic Parameters
6. **O. Reg. 248/03 Drinking-Water Testing Services**  
Ontario Regulation 248/03 (Amended to O.Reg. 821/21). Drinking-Water Testing Services is the regulation governing accredited laboratories that came into effect October 31, 2004.
  - 1) Lists systems that do not require drinking-water testing licence
  - 2) Lists prescribed tests of the Safe Drinking Water Act
  - 3) Lists person(s) to do water quality analysis
  - 4) Lists the types of tests that can be conducted for the sole purpose of carrying out research or Criteria for drinking-water testing services
  - 5) Conditions of drinking-water testing licence
  - 6) Handling samples
  - 7) Testing records
  - 8) Laboratory qualifications and accreditation
7. **O. Reg. 453/07 Financial Plans**  
Ontario regulation 453/07 (Amended to O.Reg 69/08) requires facilities that provide municipal drinking water to prepare a financial plan
8. **O. Reg. 188/07 Licensing of Municipal Drinking Water Systems**  
Ontario Regulation 188/07 (Amended to O.Reg 325/08) requires all owners of a municipal drinking water system to obtain a license from the Director of the Ministry of Environment, Conservation and Parks in order to operate their system. The requirements to obtain a license include
  1. A drinking water works permit

2. An operational plan documenting the quality management system
  3. A financial plan
  4. Accreditation of the operating authority confirming third-party verification that their quality management system conforms to Ontario's Drinking Water Quality Management Standard
  5. A permit to Take water
9. **O. Reg. 205/18 Municipal Residential Drinking Water Systems in Source Protections Areas**  
Ontario regulation 205/18 (Amended to O.Reg 67/24) This regulation ensures sources of drinking water for new or expanding municipal drinking water systems are protected before treated water is provided to the public.
10. **O. Reg. 169/03 Ontario Drinking-Water Quality Standards**  
Ontario Regulation 169/03 (Amended to O.Reg 457/16). This regulation sets out standards in Schedules 1, 2 and 3 as prescribed drinking-water quality standards. This regulation also deems the compliance standards for water quality.
11. **O. Reg. 243/07 Schools, Private Schools and Day Nurseries**  
Ontario regulation 243/07 (Amended to O.Reg 459/16). This regulation deals with private schools and day nurseries that do not obtain their water from a drinking water system. It presents the interpretation, the requirements for weekly flushing, record keeping and the exemptions.
12. **O. Reg. 229/07 Service of Documents**  
Ontario Regulation 229/07 (Amended to O.Reg 368/21) stipulates the methods of giving or serving documents and conditions applying to those methods,

### **Exemption**

Exemptions for Vermilion Water Treatment Plant

The City of Greater Sudbury purchases approximately 25-30% of the Vermilion Water Treatment Plant daily production. The other 70-75% is used by VALE Base Metals Operations. The distribution system is owned and maintained by the City of Greater Sudbury. City of Greater Sudbury personnel are required to take samples in Distribution System. Should they find a sample that is non-compliant then they must alert the Vermilion Water Treatment Plant as well as report these test values to the Ministry of Environment, Conservation and Parks Spill Action Center and the local Medical Officer of Health. We also get regular sample updates on chlorine residuals and fluoride levels in the distribution system from the City of Greater Sudbury. Typically, we meet semi-annually to discuss operational issues and capital requirements.

### **Engineer's Report**

An Engineering report was prepared on May 31<sup>st</sup> 2001. The required engineers report was completed to certify compliance to existing regulations. The Engineer made recommendations on all the deviations that were found within the drinking water system. Under the SDWA, the requirement for an Engineer's Reports has been removed as part of the regulations. This is incorporated and included in the comprehensive Drinking Water Quality Management System (DWQMS).

## **4.0 Executive Summary**

In 2024, the Vermilion Water Treatment Plant was operated in compliance with the Safe Drinking Water Act and all its associated Regulations. A comprehensive DWQMS was implemented and submitted in accordance with the regulations. All audits have been completed for all 21 elements and NSF International has granted a full scope accreditation. The plant monitors CT values and requirements on-line continual and have alarms associated. Equipment manuals are all available via the web or hard copies on site and all approvals/upgrades are being managed with through Vale's Base Metals Environmental department and the MECP.

The treatment system was operated so that the maximum flow rate of 81,800 m<sup>3</sup>/d was never exceeded in 2024. The *peak* daily flow was recorded December 28, 2024, at 42,654 m<sup>3</sup>/d for a capacity vs. design of 52.1%. (There were other peak daily flows recorded but investigations showed this was during periods of maintenance on flow meters or during plant downtimes).

The Vermilion Water Treatment plant operated and maintained the disinfection facilities of the plant in such a manner that it was in accordance with the Ministry Procedure B13-3 entitled "Chlorination of Potable Water Supplies in Ontario", dated January 2001. It also complied with the "Procedure for Disinfection of Drinking Water in Ontario" as adopted by the safe drinking water act in April 2003.

The water works was operated in such a manner that a sufficient quantity of water was directed to Meatbird Creek. The plant maintained a minimum daily average flow of 106.0 L/s to the creek at all times in 2024. (excluding maintenance events or emergencies as required)

#### Monitoring and Recording:

1. Raw water from river to plant:
  - Flow rate of the raw water feed to the Treatment Plant was recorded daily
  - Quantity of water was calculated daily.
2. Treated Water:
  - Maximum design capacity of the Vermilion Water Treatment Plant 81,800 m<sup>3</sup>/d.
  - Flow rate of treated water supplied by the water works was recorded daily
  - Volume of water conveyed through the treatment system was recorded daily
3. Meatbird Creek System:
  - Target Flow Rate in the operating licence is 106 L/s
  - Flow rate to Meatbird Creek.
  - Daily quantity of water directed to Meatbird Creek.

## **5.0 Water Distribution Systems & Flow Summaries**

The City of Greater Sudbury owns and manages the distribution system. They sample the water in the distribution system and report any problems to the Vermilion Water Treatment Plant Operator and any exceedances from standards to the Ministry of Environment, Conservation and Parks and the Medical Officer of Health.

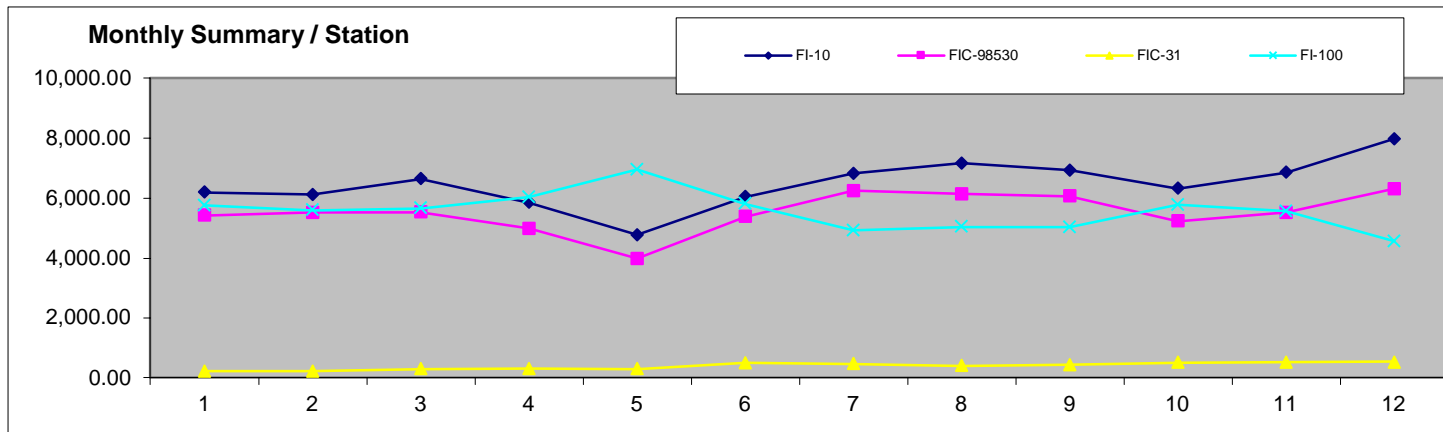
**The Following Tables Summarize the Monthly Flows for the Vermilion Water Treatment Plant and the on-line water quality data:**



## Annual Average Flow Summary Vermilion WTP

Summary : 2024

Month	Raw Inlet Flow (FI-10) GPM	CC Treated Flow (FIC-98530) GPM	Creighton Flow (FIC-31) GPM	U-Drain Flow (FI-100) USGPM
January	6,202.46	5,434.02	230.56	5,764.49
February	6,124.79	5,531.73	214.41	5,601.51
March	6,648.78	5,536.45	301.28	5,669.20
April	5,857.51	4,990.65	319.05	6,033.92
May	4,784.34	3,979.30	304.68	6,958.53
June	6,051.12	5,386.98	501.62	5,816.88
July	6,834.83	6,253.59	471.85	4,932.10
August	7,169.30	6,146.89	407.73	5,044.77
September	6,942.02	6,068.62	441.89	5,041.20
October	6,326.62	5,234.98	514.10	5,782.74
November	6,865.35	5,530.99	526.88	5,567.38
December	7,973.15	6,309.57	533.74	4,553.94
<b>Annual Average:</b>	<b>6,481.69</b>	<b>5,533.65</b>	<b>397.32</b>	<b>5,563.89</b>





## Monthly Flow Reading Summary Vermilion WTP

1-Jan-2024												
Month Min	4,301.64	-71.79	3,262.93	4,965.25	2.73	4,589.53	502.46	5.68	149.66	6,318.80	1,937.45	4,761.67
Month Max	10,739.34	6,209.13	7,422.75	7,552.48	5,028.14	6,276.12	509.59	93.67	402.14	13,290.16	5,757.44	6,552.19
Date	Raw Inlet Flow (FI-10)			CC Treated Flow (FIC-98530)			Creighton Flow (FIC-31)			U-Drain Flow (FI-100)		
	Maximum GPM	Minimum GPM	Average GPM	Maximum GPM	Minimum GPM	Average GPM	Maximum GPM	Minimum GPM	Average GPM	Maximum USGPM	Minimum USGPM	Average USGPM
1-Jan	9604.77	5746.50	6509.49	5876.79	3749.78	5069.40	502.78	81.70	186.80	12805.01	3105.98	6192.46
2-Jan	8629.54	5973.58	6562.04	5307.63	3707.41	5062.58	504.33	88.70	214.43	12739.30	4030.15	6195.56
3-Jan	9273.84	6158.10	6793.98	5492.19	3513.82	5118.56	504.98	87.24	238.65	12795.97	3570.77	6115.25
4-Jan	10400.59	6175.94	7341.14	6174.21	3531.00	5681.16	504.39	88.40	262.79	11629.32	2532.08	5458.23
5-Jan	9919.46	6045.67	7264.25	6146.66	3663.34	5805.39	504.91	89.58	399.34	12792.56	2780.92	5254.73
6-Jan	9356.38	5879.73	6641.94	5496.44	3538.06	5193.34	504.66	87.40	402.14	12245.03	3153.13	5962.33
7-Jan	9558.31	5875.99	6852.66	6702.40	3529.40	5538.08	505.38	88.61	356.78	12472.04	2990.73	5596.56
8-Jan	10081.18	6209.13	7422.75	7552.48	3899.79	6276.12	504.19	90.18	253.67	11679.43	2631.62	4761.67
9-Jan	9011.14	5463.69	6390.63	5741.54	3190.27	5200.19	503.57	92.12	240.81	12713.91	3313.29	6024.86
10-Jan	9916.03	5638.42	6185.79	5424.74	3728.32	5054.11	504.15	92.61	249.37	12476.65	2862.20	6163.35
11-Jan	9310.84	5251.04	5980.88	5378.21	3443.63	5069.54	504.02	86.44	246.67	12661.25	3204.79	6169.84
12-Jan	8873.56	4916.04	5911.83	6195.23	3546.28	5291.23	504.58	90.99	276.57	12556.89	3081.52	5909.14
13-Jan	9138.43	5321.52	6781.70	6309.06	3733.44	5957.63	504.61	89.31	287.73	12296.28	2725.05	5185.77
14-Jan	8993.85	5099.86	6305.40	6202.77	3557.92	5632.23	504.29	93.38	219.80	11962.67	2983.35	5593.34
15-Jan	9126.66	4142.49	6058.04	6131.94	3307.79	5344.76	505.09	91.25	231.88	12416.47	2860.42	5910.83
16-Jan	9565.86	4675.94	6184.23	5566.94	3485.41	5352.21	504.77	93.67	297.22	12097.24	2653.32	5860.31
17-Jan	7900.71	2063.69	5028.97	6210.63	3936.23	5670.89	504.53	91.98	221.84	12449.14	2628.09	5526.90
18-Jan	4301.64	2303.35	3262.93	5223.88	4670.07	5022.26	502.61	91.61	196.34	6722.33	5757.44	6236.29
19-Jan	9290.26	-25.30	4761.08	4965.25	3771.61	4589.53	503.34	88.33	171.12	13290.16	3164.57	6552.19
20-Jan	9929.92	5117.17	6526.99	6081.94	3768.04	5341.43	502.91	92.56	149.66	12105.46	2750.96	5839.91
21-Jan	9789.42	6183.01	7173.04	6148.74	3805.38	5934.34	503.74	92.69	175.57	12021.61	2911.49	5285.23
22-Jan	9709.98	5876.81	6991.53	6080.56	3914.00	5727.74	503.30	90.62	193.40	12361.62	2903.49	5538.75
23-Jan	8289.78	4902.90	6130.30	5880.85	3405.00	5312.03	502.71	91.93	211.41	13077.54	3727.79	5914.44
24-Jan	6745.37	4984.10	5854.36	5389.15	4845.55	5100.76	503.10	92.05	200.83	6483.80	5728.57	6149.37
25-Jan	8664.36	-71.79	3635.43	5353.37	3425.97	5060.62	509.59	90.02	221.35	12476.79	3467.86	6173.90
26-Jan	9714.25	-71.75	3627.99	6504.15	4221.92	5588.54	503.91	91.80	164.09	11602.73	2705.59	5650.32
27-Jan	10258.71	-44.93	6994.73	6563.26	2.73	6210.69	502.79	5.68	156.13	11854.56	2289.22	4912.65
28-Jan	10739.34	5607.17	7132.10	6527.25	4013.01	6120.64	502.82	92.87	170.45	12228.80	1937.45	4958.96
29-Jan	9596.34	5366.19	6589.08	5909.48	3839.64	5356.79	502.77	89.44	167.40	12111.86	2958.20	5892.65
30-Jan	7295.20	6026.37	6619.74	5708.36	5028.14	5401.22	502.46	91.52	186.85	6318.80	5291.05	5849.17
31-Jan	9377.82	5638.79	6761.23	5687.74	3616.68	5370.66	503.56	81.86	196.28	12311.58	3053.18	5864.09
1-Feb												
Average	9,108.50	4,594.50	6,202.46	5,933.35	3,657.73	5,434.02	504.03	87.31	230.56	11,798.61	3,217.88	5,764.49



## Monthly Flow Reading Summary Vermilion WTP

1-Feb-2024												
Month Min	7,907.46	4,451.56	5,731.08	5,552.79	2,269.20	5,061.50	502.37	1.56	123.73	11,424.34	1,928.85	5,067.69
Month Max	9,992.33	5,647.07	6,686.10	6,841.39	4,042.01	5,957.92	507.25	93.02	343.10	13,070.27	3,498.69	6,114.29
Date	Raw Inlet Flow (FI-10)			CC Treated Flow (FIC-98530)			Creighton Flow (FIC-31)			U-Drain Flow (FI-100)		
	Maximum GPM	Minimum GPM	Average GPM	Maximum GPM	Minimum GPM	Average GPM	Maximum GPM	Minimum GPM	Average GPM	Maximum USGPM	Minimum USGPM	Average USGPM
1-Feb	8946.28	5193.65	6252.47	5674.68	3560.63	5145.01	503.98	90.77	204.12	12825.25	3470.88	6103.50
2-Feb	9471.86	5564.55	6394.04	5881.94	3637.83	5127.81	502.78	91.52	164.34	12179.68	2921.01	6114.29
3-Feb	9440.42	4981.95	6527.35	6841.39	2269.20	5703.06	506.18	91.29	220.32	12325.60	2861.67	5468.91
4-Feb	9654.94	5647.07	6686.10	6281.75	3655.12	5957.67	502.37	91.73	175.68	11968.41	2465.68	5170.01
5-Feb	9992.33	4451.56	6386.90	6260.22	3518.38	5640.28	502.54	91.00	190.83	11828.80	1928.85	5487.83
6-Feb	9675.81	4702.90	6192.18	5634.19	3378.70	5360.48	502.64	91.91	198.65	12268.73	2341.05	5828.33
7-Feb	9016.82	5441.87	6160.83	5666.54	3790.61	5362.62	503.30	91.61	200.95	12126.79	2967.24	5821.86
8-Feb	9075.11	5620.91	6188.40	5686.89	3731.78	5359.79	503.98	86.13	247.45	12290.39	2992.57	5852.83
9-Feb	8746.28	5117.61	6286.56	6152.19	3546.49	5479.42	504.96	89.34	267.18	12367.60	3131.80	5686.65
10-Feb	8695.76	5354.13	6377.87	6238.68	3869.78	5957.92	502.63	1.56	196.83	11622.38	2609.29	5110.17
11-Feb	8743.77	4882.27	6192.56	6286.39	3549.25	5950.85	503.77	91.79	237.45	11424.34	2358.84	5121.30
12-Feb	8177.58	4907.82	5806.27	6189.89	3553.73	5489.15	502.70	92.55	218.14	12120.91	2984.73	5608.64
13-Feb	7907.46	5019.14	5731.08	5572.59	3536.21	5361.56	502.68	91.10	231.45	12592.20	3261.66	5793.03
14-Feb	8253.72	5079.72	5806.39	5569.68	3540.48	5361.23	503.04	92.55	219.06	12389.60	3118.63	5773.59
15-Feb	8411.13	5017.59	5793.71	5552.79	3496.44	5349.52	507.25	89.82	198.01	12351.82	2851.85	5816.66
16-Feb	8413.05	5238.91	5851.94	6196.23	3975.42	5576.46	503.80	87.82	190.42	11788.67	2805.17	5558.64
17-Feb	8587.98	5005.11	6182.79	6208.52	3942.74	5931.10	502.59	93.02	182.69	11897.56	2751.79	5129.35
18-Feb	8929.68	5200.61	6259.50	6198.87	4042.01	5954.20	503.90	91.66	196.44	11995.44	2438.64	5113.96
19-Feb	8401.96	5056.35	6007.46	6312.42	2805.31	5672.16	502.92	89.19	123.73	12272.08	2926.97	5576.59
20-Feb	8407.52	5243.16	5885.19	5669.53	3562.07	5360.02	503.17	91.98	177.83	12290.59	3156.34	5780.45
21-Feb	8974.05	4826.12	6428.01	6231.78	3653.58	5922.56	502.71	85.76	198.84	12139.53	2379.36	5124.90
22-Feb	8426.40	4706.51	5843.07	6160.70	3537.21	5061.50	502.44	6.76	215.72	13070.27	3498.69	6061.14
23-Feb	8666.41	4457.75	6169.64	5717.19	3355.52	5349.79	502.90	91.58	203.40	12419.15	2708.94	5791.56
24-Feb	8859.09	4611.39	6158.91	5925.16	3584.29	5583.00	504.18	90.17	343.10	12167.50	2444.03	5422.57
25-Feb	8955.38	4706.83	6392.59	6271.53	3465.97	5883.68	504.82	92.85	332.29	11483.00	2191.91	5067.69
26-Feb	8372.72	5073.95	5949.52	6129.78	3797.71	5423.28	503.65	89.52	233.11	12340.83	3085.80	5689.00
27-Feb	8566.67	5006.02	5927.17	5704.52	3861.52	5367.35	503.50	90.87	203.14	12654.73	3070.33	5803.10
28-Feb	8292.46	5233.47	5889.98	5679.52	3491.06	5356.72	503.70	90.92	216.23	12511.64	3069.20	5802.10
29-Feb	8623.66	5338.69	5890.32	5751.67	3886.69	5371.98	504.26	90.89	230.59	12383.96	2984.10	5765.01
1-Mar												
Average	8,782.29	5,058.19	6,124.79	5,987.84	3,572.27	5,531.73	503.56	84.75	214.41	12,210.26	2,819.90	5,601.51



## Monthly Flow Reading Summary Vermilion WTP

1-Mar-2024												
Month Min	7,810.84	413.64	5,224.00	5,064.17	2,805.77	4,773.19	503.12	86.29	156.02	11,610.82	2,263.58	5,176.05
Month Max	11,362.79	6,815.40	7,823.82	7,186.00	4,087.37	5,957.69	733.10	94.96	398.52	13,174.42	4,394.65	6,389.69
Date	Raw Inlet Flow (FI-10)			CC Treated Flow (FIC-98530)			Creighton Flow (FIC-31)			U-Drain Flow (FI-100)		
	Maximum GPM	Minimum GPM	Average GPM	Maximum GPM	Minimum GPM	Average GPM	Maximum GPM	Minimum GPM	Average GPM	Maximum USGPM	Minimum USGPM	Average USGPM
1-Mar	9095.76	4849.89	5944.62	5699.32	3591.27	5363.35	503.33	87.47	156.02	12113.89	2482.37	5850.27
2-Mar	9018.90	3704.70	6346.04	6293.39	3459.23	5810.03	504.34	92.23	298.94	11734.36	2464.92	5277.16
3-Mar	8497.82	4728.12	6043.91	6252.00	3685.50	5560.07	503.38	87.24	190.29	12448.94	3105.17	5608.52
4-Mar	8434.09	5173.88	5924.85	6171.76	2805.77	5432.94	509.57	88.99	213.46	12656.77	3146.35	5785.27
5-Mar	10271.49	413.64	6749.40	6290.06	3964.04	5854.06	503.96	92.36	258.54	12157.11	2586.69	5299.17
6-Mar	10378.43	6080.46	6853.42	5376.97	3545.98	5062.45	504.30	88.65	392.90	12475.06	2994.18	6094.38
7-Mar	11362.79	6378.59	7264.32	6177.98	4087.37	5440.28	504.54	89.59	354.06	12115.19	2263.58	5756.76
8-Mar	10927.26	6519.12	7473.10	6200.00	3560.96	5947.89	503.21	89.56	205.32	11610.82	2499.99	5279.57
9-Mar	10230.29	6815.40	7637.13	6266.02	3324.40	5714.07	503.98	92.14	303.34	12446.37	3278.93	5558.23
10-Mar	10485.99	6738.03	7414.10	6172.58	3779.29	5406.98	504.43	93.33	309.31	11928.18	3058.93	5871.80
11-Mar	10811.91	6397.99	7823.82	7186.00	3734.07	5957.69	733.10	94.96	398.52	12042.02	2468.63	5176.05
12-Mar	10685.81	5965.54	7612.47	6192.83	3566.11	5939.19	506.67	92.06	394.82	11919.81	2604.47	5201.71
13-Mar	10354.87	6514.56	7445.23	6226.45	3920.43	5927.55	504.50	86.98	279.36	12357.66	3025.88	5336.29
14-Mar	10847.64	6590.17	7312.67	6203.27	3927.70	5929.42	503.12	89.66	203.44	11812.17	2616.76	5379.69
15-Mar	10673.91	6560.78	7384.07	6216.58	4004.68	5940.27	505.04	90.34	334.40	11855.57	2650.97	5274.18
16-Mar	9503.48	5160.43	6772.53	6142.56	3947.02	5444.41	504.53	89.63	337.47	12517.25	3118.66	5807.02
17-Mar	9444.86	4707.13	6365.11	6120.40	3941.64	5524.57	504.37	91.57	372.40	12455.97	3096.67	5706.71
18-Mar	8933.09	3684.95	6745.97	6250.78	3756.98	5860.42	503.80	92.05	388.27	11955.56	3214.88	5300.58
19-Mar	7810.84	4489.80	5808.78	5665.54	3113.42	4990.95	652.29	91.25	362.79	12651.00	4394.65	6163.31
20-Mar	9083.07	908.56	5583.30	5602.68	3476.87	4978.76	509.56	87.47	297.72	12773.32	3366.95	6212.67
21-Mar	9108.64	908.56	5224.00	5064.17	3482.60	4773.19	503.88	86.29	295.54	12750.21	3497.84	6389.69
22-Mar	9133.48	965.89	5592.40	5855.57	2944.28	5110.59	503.74	89.30	310.53	12603.98	3411.93	6057.08
23-Mar	9871.83	2233.62	6128.29	5901.34	3534.27	5642.42	504.36	88.57	363.29	12116.36	2710.02	5525.40
24-Mar	9703.86	2146.59	6148.47	5959.33	3884.27	5664.64	504.05	92.38	333.66	11996.31	2502.59	5537.76
25-Mar	9259.02	1384.93	6147.46	6954.53	3841.37	5647.77	505.22	92.04	296.86	12422.84	2943.16	5558.79
26-Mar	9617.14	2142.40	5884.65	5957.11	4013.58	5316.23	511.09	90.92	305.85	12217.86	3175.60	5886.63
27-Mar	8103.58	3824.48	5660.90	5402.88	3684.72	5082.61	503.22	91.63	210.10	13174.42	4293.04	6191.79
28-Mar	9976.26	476.90	6620.47	5915.50	3563.27	5568.39	503.32	90.06	224.38	12246.94	3041.86	5669.79
29-Mar	10267.95	5400.10	7208.16	5911.74	3710.08	5661.48	504.45	87.75	204.84	12297.80	2949.75	5681.92
30-Mar	10447.43	6615.51	7561.26	5927.37	3585.49	5656.83	604.30	90.73	371.06	12141.70	2934.34	5524.47
31-Mar	10712.93	6494.29	7431.39	6035.16	3591.88	5420.58	504.13	92.18	372.05	12150.45	2923.31	5782.64
1-Apr												
Average	9,775.95	4,354.03	6,648.78	6,051.35	3,646.08	5,536.45	520.12	90.30	301.28	12,262.77	2,994.29	5,669.20



## Monthly Flow Reading Summary Vermilion WTP

1-Apr-2024												
Month Min	6,497.72	-71.36	3,697.84	3,672.80	2.63	3,164.55	502.36	-12.07	178.29	11,303.17	0.00	4,294.05
Month Max	10,719.96	6,208.03	7,387.78	6,606.52	5,166.69	5,963.58	655.27	93.55	456.93	14,459.03	5,105.61	7,012.44
Date	Raw Inlet Flow (FI-10)			CC Treated Flow (FIC-98530)			Creighton Flow (FIC-31)			U-Drain Flow (FI-100)		
	Maximum GPM	Minimum GPM	Average GPM	Maximum GPM	Minimum GPM	Average GPM	Maximum GPM	Minimum GPM	Average GPM	Maximum USGPM	Minimum USGPM	Average USGPM
1-Apr	10719.96	5846.92	7288.61	6079.67	3359.89	5353.58	505.09	92.84	347.44	11614.24	2943.06	5908.05
2-Apr	10082.67	176.04	7161.35	6421.39	1206.15	5494.94	503.88	88.00	292.25	12440.92	3086.17	5632.70
3-Apr	10670.08	6208.03	7387.78	6573.42	3522.44	5899.21	502.76	88.86	186.25	12334.01	2611.21	5329.29
4-Apr	10034.34	-71.36	6867.85	6237.54	2.63	5483.29	502.36	-12.07	178.29	12174.52	0.00	5360.35
5-Apr	9621.85	5751.35	6791.85	5951.73	4129.00	5673.27	503.57	92.10	255.46	11993.97	2982.67	5637.54
6-Apr	10388.39	5955.70	6765.86	6461.39	3976.60	5868.54	503.81	92.18	240.67	11561.19	2113.07	5417.36
7-Apr	9766.20	5864.75	6735.59	6303.10	3923.52	5963.58	504.29	91.44	373.71	12036.80	2653.72	5267.94
8-Apr	9303.49	5475.80	6662.59	6231.35	3550.71	5944.78	504.14	87.92	397.08	11923.23	2880.12	5236.58
9-Apr	9549.56	5122.26	6506.19	6606.52	3543.44	5935.45	655.27	92.34	375.20	11667.07	2418.82	5278.41
10-Apr	8779.23	4857.87	6154.31	6168.79	3383.35	5692.92	653.66	93.06	396.91	12355.57	3072.62	5467.91
11-Apr	8452.48	4801.28	5642.37	5602.29	2856.54	5022.28	504.04	92.08	338.15	13053.30	3646.00	6254.76
12-Apr	8740.12	4417.52	5860.10	5651.87	3879.18	5347.49	502.67	86.34	226.83	12581.31	3219.82	6051.19
13-Apr	8423.74	4903.89	5712.84	5662.20	3919.23	5353.29	503.99	91.53	272.78	12936.78	3567.87	6070.26
14-Apr	8565.01	4875.84	5749.63	5568.89	3932.53	5362.59	503.05	92.75	214.04	12910.72	3374.43	6104.39
15-Apr	8504.48	4961.58	5702.56	5796.70	3378.97	5347.01	502.70	91.79	242.43	12698.49	3485.38	6087.46
16-Apr	7133.33	5342.95	6310.30	6203.39	5166.69	5937.73	503.70	90.52	268.39	12538.09	4489.92	5491.08
17-Apr	9917.02	-50.62	6524.32	6121.79	3702.60	5689.60	578.85	90.16	286.67	12326.85	2919.38	5625.08
18-Apr	8316.68	5392.48	6155.32	5323.85	3369.58	4814.31	605.69	92.23	345.57	13176.02	4187.17	6513.33
19-Apr	10059.05	3696.30	5412.19	5020.69	3401.89	4095.05	579.08	93.55	404.16	13815.10	2462.27	6923.77
20-Apr	9115.19	3631.36	4990.31	4327.48	3425.27	3994.14	578.83	92.79	350.12	13589.57	3057.56	7012.44
21-Apr	8804.55	3720.48	4957.43	4567.33	3390.29	4027.78	578.67	91.85	307.09	13449.29	3484.28	6990.34
22-Apr	8649.30	4633.17	5276.39	5193.17	4049.85	4450.87	579.27	91.37	288.37	12900.12	3386.67	6722.24
23-Apr	8612.65	4711.94	5594.52	5132.42	3823.91	4698.92	620.19	92.98	456.93	12912.88	3549.89	6457.70
24-Apr	7691.58	4781.08	5508.89	5129.70	3478.78	4596.92	620.17	90.43	375.97	12828.93	4234.93	6530.65
25-Apr	8443.96	2831.45	5129.93	4853.43	3345.86	4472.27	579.83	91.63	282.48	13071.22	2320.93	5745.75
26-Apr	8283.88	4309.99	5091.02	4908.06	3377.71	4275.30	579.87	92.96	418.99	13465.79	3966.32	6791.13
27-Apr	7357.16	4474.16	5186.30	4686.98	3423.89	4195.70	580.46	92.38	363.08	13581.27	4538.72	6897.49
28-Apr	6977.53	3809.71	4821.26	4668.46	3267.27	4163.87	580.81	88.21	391.91	13259.47	5105.61	6953.92
29-Apr	8012.67	903.00	4079.90	4230.46	2880.69	3400.39	580.15	89.45	347.86	14459.03	3310.96	6964.50
30-Apr	6497.72	2331.94	3697.84	3672.80	2656.07	3164.55	580.67	90.26	346.57	11303.17	1683.85	4294.05
1-May												
Average	8,849.13	4,122.23	5,857.51	5,511.90	3,377.48	4,990.65	552.72	87.73	319.05	12,698.63	3,158.45	6,033.92



## Monthly Flow Reading Summary Vermilion WTP

1-May-2024												
Month Min	5,269.74	-57.52	3,580.98	3,515.73	-3,734.45	3,238.52	578.19	6.07	168.44	7,311.59	16.99	4,205.42
Month Max	9,286.86	4,766.64	5,736.21	5,845.34	3,841.84	4,960.32	1,191.41	199.03	538.93	14,620.40	6,711.59	7,639.81
Date	Raw Inlet Flow (FI-10)			CC Treated Flow (FIC-98530)			Creighton Flow (FIC-31)			U-Drain Flow (FI-100)		
	Maximum GPM	Minimum GPM	Average GPM	Maximum GPM	Minimum GPM	Average GPM	Maximum GPM	Minimum GPM	Average GPM	Maximum USGPM	Minimum USGPM	Average USGPM
1-May	6753.06	2211.55	3656.47	3998.27	2620.07	3238.52	578.19	92.58	235.41	11140.64	1358.65	4205.42
2-May	6883.80	3201.19	4080.44	4344.32	3181.44	3758.24	580.11	88.00	233.01	13594.29	3292.70	5536.23
3-May	7380.13	651.34	4640.13	4571.13	3285.74	4050.09	581.98	77.35	168.44	13925.53	5505.75	7183.02
4-May	7420.03	4592.03	5305.57	4579.29	3283.01	4179.39	578.26	91.95	176.83	13615.03	5160.99	7064.09
5-May	7287.30	4413.89	5249.87	4628.88	3301.89	4129.63	578.98	89.90	192.34	13284.36	5218.13	7100.94
6-May	8470.66	4528.81	5130.74	4622.68	2809.29	4182.48	580.04	90.78	191.72	13013.54	4021.50	7052.37
7-May	7977.63	4123.27	5290.41	4975.38	3433.83	4270.08	578.41	75.13	206.61	12108.31	4271.48	6978.12
8-May	8216.39	-57.52	5736.21	5845.34	-3734.45	4614.08	1191.41	6.07	215.99	13250.09	16.99	5882.27
9-May	8914.97	3974.32	5263.84	4449.24	3398.40	4179.97	578.24	90.04	218.75	13280.45	3546.58	7024.72
10-May	8569.99	3614.97	4496.57	4115.98	3062.50	3457.49	578.29	91.12	211.00	14056.50	3852.17	7505.25
11-May	7617.51	3549.39	4281.48	3515.73	3049.22	3298.10	578.61	92.09	202.30	14620.40	4777.87	7639.81
12-May	6966.84	3527.79	4196.42	3521.78	3059.84	3298.52	578.53	89.35	205.35	14414.21	5463.81	7625.39
13-May	5507.28	3380.86	4324.28	4517.22	3069.86	3470.35	579.94	89.87	385.62	7957.01	6711.59	7416.68
14-May	7275.73	4283.95	5026.86	4535.09	3506.29	4188.84	580.26	91.37	236.00	13869.22	4851.07	7024.79
15-May	6076.42	4260.10	5172.49	4548.17	3841.84	4202.67	580.11	86.97	221.93	7311.59	6692.35	7019.96
16-May	7215.20	4403.67	5081.32	4776.21	3301.32	4248.46	580.85	90.08	219.58	13841.12	4653.17	6997.29
17-May	7849.93	4119.79	5025.83	4787.91	2197.31	4211.07	579.42	90.97	296.15	13289.21	4047.52	6968.90
18-May	7203.12	4123.43	5091.69	4530.65	2130.06	4100.41	578.90	90.12	228.38	13919.62	4873.81	7081.71
19-May	6770.14	3885.68	4641.50	4279.63	1994.47	3854.74	580.62	90.77	300.43	13676.65	5412.33	7251.02
20-May	7063.23	3824.70	4603.24	4706.41	3236.20	3869.85	678.30	91.94	426.93	13443.24	4709.65	7205.06
21-May	8080.95	4147.73	4975.77	4835.12	3384.21	4215.60	579.97	91.30	309.45	12913.15	3596.01	6996.78
22-May	8167.07	4667.27	5376.93	5181.02	3390.68	4687.25	578.59	91.04	253.67	13442.18	3698.04	6684.13
23-May	7736.42	4766.64	5623.45	5816.43	3304.89	4960.32	578.43	92.31	194.06	13136.81	4108.55	6401.61
24-May	6336.40	3568.43	4499.23	5177.28	3032.02	4108.39	578.61	89.49	294.54	13827.29	5404.75	7115.50
25-May	5891.65	2831.18	3580.98	3763.71	2927.78	3312.36	578.94	168.04	519.61	14236.19	6085.18	7599.79
26-May	7257.01	2933.06	3687.04	3749.89	2908.74	3310.25	578.31	199.03	538.93	13823.14	4671.78	7603.92
27-May	5269.74	3402.01	4313.26	4535.60	2999.36	3787.47	580.04	199.03	514.53	7885.22	6708.69	7301.10
28-May	9286.86	4420.27	5287.81	5106.44	3359.64	4408.56	578.55	198.33	508.64	13256.65	2552.80	6788.01
29-May	6862.56	3872.06	4955.80	5066.35	3200.72	3916.78	581.06	198.91	524.52	14368.22	5063.76	7148.04
30-May	7843.23	3691.42	4583.11	4278.01	3220.00	3729.33	589.18	198.32	532.46	13773.90	4230.66	7275.60
31-May	7383.10	722.98	5135.67	4873.08	3156.34	4119.04	578.74	198.91	481.88	13329.91	5035.12	7037.00
1-Jun												
Average	7,339.82	3,536.65	4,784.34	4,588.14	2,868.15	3,979.30	602.58	110.36	304.68	12,954.96	4,503.01	6,958.53



## Monthly Flow Reading Summary Vermilion WTP

1-Jun-2024												
Month Min	5,324.61	4,230.07	4,764.37	4,114.59	1,958.95	3,897.82	577.98	181.10	425.58	7,217.07	1,954.99	4,803.31
Month Max	9,783.65	5,862.29	6,865.22	6,610.87	4,277.21	6,260.43	630.26	199.05	555.54	13,389.38	6,819.14	7,158.20
Date	Raw Inlet Flow (FI-10)			CC Treated Flow (FIC-98530)			Creighton Flow (FIC-31)			U-Drain Flow (FI-100)		
	Maximum GPM	Minimum GPM	Average GPM	Maximum GPM	Minimum GPM	Average GPM	Maximum GPM	Minimum GPM	Average GPM	Maximum USGPM	Minimum USGPM	Average USGPM
1-Jun	8193.97	4288.91	5525.13	4869.14	3088.20	4475.98	578.36	198.77	472.73	13216.29	3958.34	6754.70
2-Jun	5869.60	4729.04	5279.21	4807.12	3888.35	4291.39	579.65	198.85	531.39	7217.07	6408.63	6921.82
3-Jun	8561.50	4653.90	5183.97	4990.42	3409.61	4191.63	579.86	198.73	488.50	13389.38	3406.08	6983.24
4-Jun	8757.83	4995.78	5599.23	5486.83	3439.75	4716.19	579.44	198.96	496.19	12923.37	3391.18	6543.25
5-Jun	8776.07	5287.36	5930.82	5570.76	3330.44	5152.88	577.98	198.75	477.84	12811.07	3242.13	6139.58
6-Jun	8448.96	5121.90	5934.99	5528.85	3159.27	5090.07	589.61	192.10	502.25	13229.66	3485.36	6211.24
7-Jun	8510.02	4570.19	5570.62	4982.74	3714.80	4604.00	579.53	198.54	535.44	13235.10	3689.43	6613.34
8-Jun	5324.61	4309.74	4764.37	4114.59	3708.14	3897.82	580.34	198.46	525.74	7434.34	6819.14	7158.20
9-Jun	8710.77	4240.35	4990.14	4889.31	3685.99	4088.00	578.59	198.42	504.32	13093.48	3419.59	7040.30
10-Jun	8291.53	4230.07	5545.02	5140.92	1958.95	4743.03	630.26	197.87	526.46	12964.13	3887.96	6544.50
11-Jun	8008.38	5040.83	5857.72	5370.54	3388.95	4964.67	629.99	198.22	553.56	12980.00	4020.35	6271.50
12-Jun	8477.61	5231.35	5979.75	5813.01	3336.83	5102.40	579.71	198.05	527.55	13045.48	3537.73	6156.43
13-Jun	9554.92	5281.10	6865.22	6533.23	3675.97	6108.00	580.49	199.05	552.92	11785.76	2173.53	4844.30
14-Jun	9190.38	4618.61	6730.83	6563.89	3408.45	6147.62	579.69	198.67	540.77	11850.70	2628.56	4803.31
15-Jun	9203.20	4762.79	5814.44	5374.04	3357.09	5065.62	578.77	198.91	555.54	12794.29	2294.89	6118.04
16-Jun	8850.62	4662.77	6147.93	5946.54	3527.23	5551.30	579.31	198.74	539.91	12448.07	2763.40	5648.11
17-Jun	8908.65	4792.77	6211.12	6454.85	3777.38	5714.94	578.67	198.30	500.76	12199.62	2935.95	5507.49
18-Jun	9293.23	5612.58	6622.88	6438.30	4115.75	6087.98	580.90	198.64	497.59	11663.80	2453.19	5039.10
19-Jun	9645.11	5452.24	6797.35	6598.04	4257.79	6258.84	578.75	186.97	455.87	11470.23	2145.05	4849.71
20-Jun	8837.49	5743.51	6687.36	6610.87	4277.21	6260.43	579.81	198.71	520.58	12073.93	2871.91	4829.52
21-Jun	8545.52	4879.05	6076.86	6278.22	3439.94	5687.07	579.05	198.44	494.40	12357.22	3194.08	5554.68
22-Jun	8888.74	4537.70	6055.31	6050.55	3436.30	5648.60	578.68	198.05	495.17	11986.66	2814.99	5624.13
23-Jun	8745.59	5015.95	5972.10	5958.28	3502.17	5433.51	579.28	198.87	475.35	12512.71	3206.19	5946.56
24-Jun	8928.89	5456.11	6189.71	6172.29	3628.69	5662.38	578.81	198.52	466.52	12687.63	2915.29	5723.91
25-Jun	9783.65	5484.51	6494.88	6503.42	4245.58	6054.39	580.59	181.10	460.23	11733.61	1954.99	5224.10
26-Jun	9548.84	5661.98	6793.69	6580.42	4157.15	6259.34	580.38	198.51	525.59	11882.34	2209.90	4847.53
27-Jun	8693.02	5554.98	6313.31	6379.27	3740.41	5766.24	578.73	197.93	425.58	12374.14	2963.85	5607.40
28-Jun	9391.80	5434.49	6560.06	6602.54	3898.28	6090.28	578.84	198.44	488.19	11922.18	2195.97	5128.67
29-Jun	9418.34	5862.29	6528.79	6591.53	4038.29	6251.02	579.30	198.27	445.74	11836.91	2325.37	4914.49
30-Jun	9445.40	5588.75	6510.91	6477.52	3882.85	6243.80	580.33	197.50	466.10	11695.88	2422.22	4957.38
1-Jul												
Average	8,693.48	5,036.72	6,051.12	5,855.93	3,615.86	5,386.98	583.12	197.31	501.62	12,093.84	3,191.17	5,816.88



## Monthly Flow Reading Summary Vermilion WTP

1-Jul-2024												
Month Min	8,783.31	-71.46	6,230.77	6,167.97	2.73	5,736.70	577.09	16.04	269.81	11,325.50	1,599.99	3,739.39
Month Max	10,452.92	6,399.26	7,831.58	8,355.31	5,234.37	7,158.89	587.30	199.08	533.93	12,711.02	3,224.70	5,666.30
Date	Raw Inlet Flow (FI-10)			CC Treated Flow (FIC-98530)			Creighton Flow (FIC-31)			U-Drain Flow (FI-100)		
	Maximum GPM	Minimum GPM	Average GPM	Maximum GPM	Minimum GPM	Average GPM	Maximum GPM	Minimum GPM	Average GPM	Maximum USGPM	Minimum USGPM	Average USGPM
1-Jul	9659.81	5030.06	6652.91	8355.31	3447.51	6237.14	587.30	198.11	518.67	11381.53	2075.00	4847.49
2-Jul	9289.39	11.77	6564.38	6656.64	3721.92	5943.93	579.43	198.46	507.12	12711.02	3060.60	5268.30
3-Jul	9488.31	5983.68	6707.23	6167.97	4040.51	5803.86	580.28	198.48	518.95	12297.98	2993.09	5484.69
4-Jul	9684.06	6015.14	6816.78	6187.06	3766.57	5942.57	578.49	199.08	481.72	11888.94	2785.48	5341.04
5-Jul	9895.02	6058.49	7017.95	6613.99	4375.04	6189.09	579.16	191.54	487.15	11641.13	2284.90	5057.80
6-Jul	9604.48	5988.22	7057.78	6764.42	4189.74	6438.49	579.58	198.61	503.42	11731.21	2473.91	4693.50
7-Jul	8949.45	5780.36	6699.04	6654.44	3816.14	6080.90	579.76	198.94	514.29	12270.57	2956.14	5165.04
8-Jul	9559.80	4973.89	6584.31	6503.84	2038.91	5953.69	580.04	197.52	481.70	11918.89	2445.01	5314.40
9-Jul	9295.71	5544.54	6640.35	6351.58	3758.77	6005.75	579.64	198.06	461.00	12262.83	2745.19	5212.68
10-Jul	9196.26	5659.92	6568.56	6548.10	3800.83	5959.03	579.06	198.45	469.00	12437.22	2783.99	5327.71
11-Jul	9319.70	-71.46	6699.39	7591.12	2.73	6132.33	578.26	16.04	269.81	11325.50	2728.89	5666.30
12-Jul	10452.92	5257.15	7831.58	7497.95	5139.23	7110.49	578.38	197.80	402.23	11493.22	1599.99	3848.00
13-Jul	9410.54	4380.39	6750.81	7023.77	3595.21	6253.44	578.47	198.04	374.01	12385.16	2541.24	5065.10
14-Jul	8783.31	5076.70	6230.77	6196.18	3583.01	5736.70	580.35	198.67	436.92	12575.59	3224.70	5661.56
15-Jul	9540.46	5514.99	6355.58	6717.94	4315.08	5774.48	581.15	198.17	478.83	12189.62	2382.11	5549.34
16-Jul	9856.90	5145.53	7221.16	7352.52	4256.10	6656.06	578.83	190.80	416.54	12078.79	2186.10	4484.17
17-Jul	10290.96	5015.55	7491.22	7301.15	4943.87	6855.95	578.90	197.41	449.03	11407.28	1691.85	4151.25
18-Jul	9468.32	5371.08	7464.38	7308.01	3416.48	6772.05	578.59	198.28	461.01	11769.23	2448.59	4230.44
19-Jul	9286.77	4264.64	6608.65	6636.40	3492.41	6098.42	580.20	197.97	503.68	12358.10	2575.92	5062.54
20-Jul	9351.67	5668.09	6583.86	6443.24	3607.27	6006.80	580.12	198.00	528.59	12172.13	2617.38	5199.31
21-Jul	9229.85	5145.51	6781.25	6774.12	3554.59	6236.25	579.62	198.50	515.51	12264.85	2616.24	4919.21
22-Jul	9050.37	5057.38	6673.59	7196.62	3718.19	6216.56	582.05	191.68	460.05	12374.44	2919.94	4958.23
23-Jul	9009.50	5381.42	6513.57	6395.75	3757.90	6142.48	578.78	198.10	429.82	12334.72	2781.43	5111.91
24-Jul	9384.09	5789.03	6597.94	6516.95	3717.88	6135.59	579.09	198.91	471.83	11710.93	2596.82	5032.80
25-Jul	9493.72	5608.84	6697.05	6484.10	3943.64	6149.28	579.15	198.17	508.78	12188.14	2568.49	5023.56
26-Jul	9228.96	5762.46	6624.61	6605.25	4010.95	6205.25	578.31	198.71	476.17	11959.56	2750.03	4955.61
27-Jul	9318.29	5634.10	7016.18	6691.93	4009.91	6460.96	580.10	198.61	533.91	12183.15	2681.84	4606.44
28-Jul	9996.58	5814.95	7389.73	7444.98	3639.84	6715.90	580.60	198.23	533.93	12010.29	2003.29	4255.08
29-Jul	9532.87	6399.26	7773.87	7793.02	5234.37	7158.89	578.14	197.48	460.27	11489.71	2481.68	3739.39
30-Jul	9038.00	4172.68	6808.00	7472.41	3537.70	6342.33	586.14	198.48	504.82	12042.34	2711.40	4684.84
31-Jul	9379.31	5589.16	6457.27	6460.89	4022.17	6146.51	577.09	198.44	468.47	11999.52	2359.22	4977.26
1-Aug												
Average	9,453.08	5,065.27	6,834.83	6,861.54	3,756.60	6,253.59	579.84	191.73	471.85	12,027.54	2,550.66	4,932.10



## Monthly Flow Reading Summary Vermilion WTP

1-Aug-2024												
Month Min	8,556.45	-3,979.36	5,959.19	5,298.01	3,066.34	4,858.49	577.57	-12.10	294.65	11,165.29	1,466.50	3,670.66
Month Max	13,229.88	6,760.38	8,424.67	8,429.01	5,346.40	7,307.96	1,991.23	199.14	510.25	13,272.01	3,783.37	6,466.20
Date	Raw Inlet Flow (FI-10)			CC Treated Flow (FIC-98530)			Creighton Flow (FIC-31)			U-Drain Flow (FI-100)		
	Maximum GPM	Minimum GPM	Average GPM	Maximum GPM	Minimum GPM	Average GPM	Maximum GPM	Minimum GPM	Average GPM	Maximum USGPM	Minimum USGPM	Average USGPM
1-Aug	9093.50	-70.88	6274.83	6335.92	3598.98	5748.64	577.93	199.00	459.98	12367.85	3324.47	5520.58
2-Aug	10733.79	5786.30	7452.26	7602.78	4256.99	6487.11	579.10	198.30	464.86	11596.12	1686.45	4643.35
3-Aug	10762.91	5616.38	8202.99	7517.45	5244.54	7050.06	578.17	199.14	459.63	11270.78	1723.39	3885.04
4-Aug	10624.19	6251.30	8116.48	7691.92	5173.27	7057.56	578.27	198.69	443.55	11856.87	1773.64	3923.75
5-Aug	9643.93	6073.15	7066.50	7391.96	4068.95	6262.26	577.60	198.43	351.51	12013.20	2790.52	5081.96
6-Aug	11047.28	6304.52	7899.89	8287.13	4786.62	6904.88	580.19	198.25	508.48	11169.34	1466.50	4190.25
7-Aug	9685.79	5348.27	7831.43	8429.01	3321.06	6912.33	587.12	198.60	510.25	12774.39	2275.93	4350.75
8-Aug	9883.41	5888.40	6840.35	6566.21	4019.94	5773.84	579.77	198.37	489.82	12025.67	2205.48	5536.25
9-Aug	10625.08	5081.40	7596.42	7758.23	3066.34	6632.37	579.16	199.12	467.21	11165.29	1816.38	4478.29
10-Aug	10549.29	5900.95	8424.67	8120.63	5346.40	7307.96	578.59	197.86	426.25	11803.23	1753.83	3670.66
11-Aug	9327.65	5361.46	6936.78	6220.97	3532.90	5798.56	578.07	198.43	437.99	12620.30	3147.31	5511.38
12-Aug	9851.46	6208.44	7090.16	6411.23	3500.82	5837.30	578.15	197.84	463.85	12250.99	2794.34	5408.40
13-Aug	10550.20	5968.37	7393.55	6797.14	3924.18	6187.13	578.78	198.54	466.63	11788.78	2126.46	4992.49
14-Aug	10681.55	5486.89	7696.16	6945.44	3543.22	6629.51	577.58	197.39	443.13	11504.98	1747.49	4508.85
15-Aug	13229.88	-3979.36	7333.06	7001.43	4235.04	6468.98	1991.23	-12.10	363.56	12094.64	2517.03	4681.16
16-Aug	9990.39	6144.13	7325.60	6319.22	3963.60	6053.63	581.62	198.20	341.02	12319.93	2798.13	5176.81
17-Aug	10305.52	5838.53	7287.62	6384.45	3709.48	6046.01	578.25	196.92	336.79	11981.87	2473.72	5193.49
18-Aug	9733.23	5670.01	7101.21	6237.52	3747.66	5865.39	577.57	198.37	362.85	12274.40	2965.96	5432.60
19-Aug	9772.67	5718.16	6899.60	6095.34	3553.19	5743.16	577.79	196.65	377.26	12366.54	2557.51	5577.01
20-Aug	8564.81	5110.42	6701.57	6144.39	3538.14	5526.09	578.52	197.97	408.06	13158.90	3686.17	5740.89
21-Aug	10409.29	6135.79	7206.23	6545.80	4158.40	6081.36	578.78	197.52	360.58	11717.64	2112.85	5118.93
22-Aug	10641.11	5871.98	7248.92	6616.17	4079.91	6189.71	577.94	198.04	417.38	11581.35	2164.96	4894.68
23-Aug	9040.51	5514.92	6406.02	5820.71	3622.27	5470.39	578.92	189.80	440.34	12740.10	3121.86	5831.31
24-Aug	9291.04	5573.73	6432.81	5820.75	3574.89	5457.97	577.85	197.65	428.64	12646.32	3035.78	5871.39
25-Aug	10051.66	5409.80	6910.70	7324.06	4525.24	6231.60	577.97	197.21	411.34	11636.43	1851.37	4914.80
26-Aug	10035.99	6760.38	7828.92	7439.06	4657.43	6954.65	579.43	196.57	414.83	11348.41	2111.74	3938.13
27-Aug	8556.45	5366.60	6720.93	7315.64	3633.65	5722.56	578.84	194.98	325.89	13272.01	3783.37	5505.44
28-Aug	9375.86	5253.85	5959.19	5298.01	3261.19	4858.49	578.54	193.96	315.73	12377.70	3046.65	6466.20
29-Aug	8910.29	5125.83	6279.92	6266.15	3423.21	5211.56	578.56	194.31	325.16	12983.81	3493.71	6060.97
30-Aug	9410.57	81.13	6917.73	6681.25	3788.93	6041.42	588.63	194.92	322.31	12370.85	2758.82	5101.37
31-Aug	9519.64	6040.50	6865.67	6319.80	3735.31	6040.98	578.16	193.71	294.65	12281.81	2653.71	5180.80
1-Sep												
Average	9,996.74	5,059.40	7,169.30	6,829.22	3,954.57	6,146.89	624.74	190.41	407.73	12,108.40	2,508.56	5,044.77



## Monthly Flow Reading Summary Vermilion WTP

1-Sep-2024												
Month Min	8,543.68	-3.62	5,896.04	5,221.24	2.75	4,865.47	577.47	-0.56	161.11	11,080.90	61.14	3,871.61
Month Max	11,164.08	6,859.29	8,052.26	7,830.68	5,068.04	6,966.31	744.93	198.89	531.56	13,272.06	3,636.42	6,439.37
Date	Raw Inlet Flow (FI-10)			CC Treated Flow (FIC-98530)			Creighton Flow (FIC-31)			U-Drain Flow (FI-100)		
	Maximum GPM	Minimum GPM	Average GPM	Maximum GPM	Minimum GPM	Average GPM	Maximum GPM	Minimum GPM	Average GPM	Maximum USGPM	Minimum USGPM	Average USGPM
1-Sep	9573.08	5745.33	6913.60	6293.28	3889.18	6036.71	577.55	195.94	337.15	11842.68	2645.18	5163.05
2-Sep	9312.32	5815.54	6348.50	6080.01	3225.95	5337.63	577.87	196.39	310.63	12841.79	3059.86	6065.41
3-Sep	8891.42	5430.96	6240.00	5618.07	3363.82	5138.83	580.04	196.39	399.79	12742.05	3388.55	6219.58
4-Sep	9249.53	-3.62	6266.98	6490.97	2.75	5312.62	744.93	10.48	435.00	12446.84	61.14	5482.85
5-Sep	9914.76	4755.91	7131.82	6623.31	3426.72	6327.88	578.41	190.50	424.68	11952.61	2136.88	4780.96
6-Sep	9664.78	5655.51	6680.46	6507.63	3458.42	5811.01	577.47	197.77	442.10	11981.38	2403.33	5392.49
7-Sep	8543.68	5186.18	5896.04	5221.24	2957.04	4865.47	578.09	198.58	446.37	12925.84	3591.32	6439.37
8-Sep	8912.03	5265.23	5983.69	5676.89	2923.74	4923.15	578.04	198.31	462.82	13272.06	3636.42	6371.88
9-Sep	8950.17	5805.10	6673.98	6298.25	3347.88	5648.54	579.49	198.25	457.66	12767.82	3367.25	5565.80
10-Sep	9812.92	5679.59	7066.28	6632.88	3570.07	6203.24	578.39	197.90	453.69	11886.15	2379.69	4877.16
11-Sep	11164.08	5398.81	7498.72	7623.93	4941.98	6613.79	580.24	196.59	488.19	11108.02	1153.79	4352.67
12-Sep	9871.49	6560.33	7845.96	7762.15	4433.01	6952.32	582.71	197.09	425.09	11443.74	1994.48	3887.78
13-Sep	9368.23	5475.35	7115.90	7394.72	3930.33	6557.17	579.52	197.70	418.82	12139.29	2596.72	4420.15
14-Sep	10134.40	5347.62	6869.45	6828.14	3644.06	6298.94	578.89	198.22	402.21	11802.31	1922.34	4804.42
15-Sep	9539.14	5441.15	6702.12	7830.68	3764.37	5935.63	578.61	197.69	432.17	12029.75	2767.35	5296.74
16-Sep	10319.59	5922.58	7974.02	7432.05	4998.30	6965.75	578.07	198.65	443.25	11080.90	1852.56	3895.40
17-Sep	10306.46	6273.34	7986.58	7731.07	5068.04	6966.31	580.60	197.54	503.15	11399.14	1822.02	3871.61
18-Sep	9226.40	5313.56	6926.55	7303.11	3655.43	6220.63	585.94	198.08	460.19	12494.37	2886.65	4898.43
19-Sep	9297.18	5310.07	6401.82	6082.87	3843.72	5757.05	578.97	198.66	465.79	12347.71	2864.26	5498.76
20-Sep	10176.67	5736.56	7828.63	7447.91	3771.33	6811.81	587.07	198.89	463.90	11702.39	2143.65	4137.19
21-Sep	10054.54	6859.29	8052.26	7429.70	4423.30	6965.36	578.80	197.74	441.98	11567.90	2244.48	3926.01
22-Sep	9461.27	5813.29	6875.37	7313.32	3642.91	6083.40	579.10	198.06	512.75	12321.66	2717.90	5051.20
23-Sep	9812.22	5721.00	6822.79	6583.23	3662.46	5979.96	580.35	198.47	517.67	12066.29	2350.04	5133.21
24-Sep	10396.50	5479.22	7181.27	6649.79	3523.12	6332.49	579.55	198.38	531.56	11437.01	1852.82	4676.54
25-Sep	9179.54	5611.75	6886.51	6695.62	3737.01	6117.07	578.74	198.50	497.44	12445.19	3022.39	4964.92
26-Sep	8841.48	5134.72	6156.41	5937.07	3502.30	5243.24	579.92	197.76	519.03	12637.66	3416.89	6049.54
27-Sep	10165.15	5473.23	6503.78	6595.34	4273.85	5632.07	579.67	191.13	485.10	11125.92	2000.68	5549.64
28-Sep	10134.22	5414.07	7459.87	7212.75	4623.56	6636.45	579.15	197.17	477.97	11709.13	2164.17	4382.44
29-Sep	10219.71	5964.35	7516.56	7184.63	4842.81	6669.80	579.28	198.34	439.57	11478.59	1927.37	4344.32
30-Sep	8901.48	5346.24	6454.66	7141.42	3699.35	5714.23	580.16	-0.56	161.11	12811.25	3260.74	5736.60
1-Oct												
Average	9,646.48	5,431.08	6,942.02	6,787.40	3,738.23	6,068.62	585.19	184.49	441.89	12,060.25	2,454.36	5,041.20



## Monthly Flow Reading Summary Vermilion WTP

1-Oct-2024												
Month Min	6,968.76	-71.65	4,591.48	3,993.56	-3,100.30	3,561.64	577.74	-1.49	371.84	6,108.36	46.42	4,605.58
Month Max	11,391.73	6,736.04	7,424.72	7,127.66	5,207.08	6,340.10	1,650.48	199.08	564.32	14,798.91	5,323.45	7,215.74
Date	Raw Inlet Flow (FI-10)			CC Treated Flow (FIC-98530)			Creighton Flow (FIC-31)			U-Drain Flow (FI-100)		
	Maximum GPM	Minimum GPM	Average GPM	Maximum GPM	Minimum GPM	Average GPM	Maximum GPM	Minimum GPM	Average GPM	Maximum USGPM	Minimum USGPM	Average USGPM
1-Oct	9593.49	5692.27	6493.21	6386.35	3873.30	5683.98	579.08	199.02	480.17	11776.42	2648.71	5521.77
2-Oct	9369.21	5386.41	6792.40	6553.15	3616.66	6038.54	577.74	198.73	486.01	11951.98	2758.15	5044.93
3-Oct	9358.68	5671.26	6524.66	6052.37	3447.89	5749.09	580.29	198.21	529.57	12444.26	2972.70	5451.36
4-Oct	9523.08	150.32	6630.31	6011.01	3361.14	5743.41	578.89	197.93	523.01	12480.61	2667.23	5376.28
5-Oct	9394.46	4904.56	6452.36	6043.23	3494.80	5746.82	579.68	198.06	519.30	12232.11	2773.67	5396.10
6-Oct	9506.11	-71.65	6697.85	6617.86	-3100.30	5973.53	578.29	55.44	423.97	11621.10	46.42	4610.63
7-Oct	9856.79	5326.60	7094.47	7127.66	3532.04	6326.19	578.58	198.28	459.11	11342.06	1922.68	4684.25
8-Oct	6968.76	5816.95	6426.50	6013.27	4926.42	5620.46	579.15	198.02	527.42	6351.83	4437.72	5550.33
9-Oct	9313.50	5373.56	6299.50	5494.36	3475.26	5134.56	579.67	198.12	527.27	12845.25	2861.28	6036.15
10-Oct	8673.40	5617.31	6401.39	5493.54	3549.79	5173.40	580.97	198.60	537.35	12742.89	3427.76	5982.80
11-Oct	9913.77	5664.92	6840.33	6089.69	3639.28	5722.87	580.52	198.35	517.63	11892.94	2302.36	5342.30
12-Oct	10504.04	5622.12	7390.46	6707.02	3581.38	6340.10	578.67	198.38	454.28	11388.34	1681.27	4605.58
13-Oct	9970.09	5549.00	7134.10	6512.38	3534.82	5850.88	578.67	198.15	511.33	12363.42	2630.69	5203.88
14-Oct	9311.81	5839.76	6665.63	5734.16	3574.22	5359.99	578.30	198.30	371.84	12487.51	3130.98	5912.71
15-Oct	8898.50	5074.19	6155.75	5835.09	3167.25	4890.26	581.66	198.42	537.46	12704.96	3425.70	6199.77
16-Oct	8054.97	4142.97	4974.29	4579.34	3194.66	3944.36	578.65	198.43	469.70	13416.97	3888.33	6931.88
17-Oct	7127.63	3899.87	4591.48	3993.56	1629.08	3561.64	603.70	198.46	485.75	14023.52	5323.45	7215.74
18-Oct	8791.13	-71.13	5006.70	5076.30	0.00	3971.98	1118.30	0.00	517.87	12640.56	116.06	6918.27
19-Oct	8790.00	5615.93	6520.71	5661.89	3573.13	5311.54	579.99	198.25	546.41	12442.95	3419.78	5883.27
20-Oct	7656.75	5198.17	6124.28	5694.48	3489.12	5000.61	579.41	198.02	542.40	13139.59	4204.32	6192.96
21-Oct	8263.14	4420.38	5138.01	4754.10	2922.58	3951.65	655.13	198.43	564.32	13658.54	3950.70	6996.34
22-Oct	11391.73	24.97	5416.01	6070.09	2.80	4407.10	1650.48	-1.49	542.87	14798.91	814.49	6761.56
23-Oct	9330.86	4400.96	5640.77	5080.46	3360.80	4486.32	579.68	198.68	519.65	12916.00	2978.75	6630.65
24-Oct	7363.43	5651.94	6660.29	5942.90	4894.98	5613.96	579.49	198.75	533.85	6430.88	4737.87	5461.17
25-Oct	8703.81	5112.23	6469.60	5920.35	3590.55	5466.62	580.03	198.49	541.27	12477.31	3238.00	5493.65
26-Oct	8823.90	4850.62	6110.22	5378.11	3307.60	4983.62	579.84	199.08	550.59	12555.00	3335.08	6076.65
27-Oct	10980.91	4044.32	7017.18	6406.03	4114.79	5664.34	579.36	197.90	548.09	12194.62	656.52	4801.96
28-Oct	10904.34	4589.19	6472.18	5930.13	3196.30	4880.86	580.30	198.72	544.62	13280.81	1533.61	5998.80
29-Oct	10660.07	3385.42	5845.85	5110.85	3297.03	4485.53	580.56	198.43	529.21	13184.22	1571.82	6399.83
30-Oct	10220.89	330.47	6713.84	6146.31	3317.61	5246.68	581.48	198.04	550.10	12564.77	2112.01	5639.25
31-Oct	8167.24	6736.04	7424.72	6294.77	5207.08	5953.63	579.58	198.43	544.76	6108.36	4262.69	4944.19
1-Nov												
Average	9,206.02	4,320.97	6,326.62	5,829.38	3,121.68	5,234.98	634.72	180.92	514.10	12,014.80	2,768.74	5,782.74



## Monthly Flow Reading Summary Vermilion WTP

1-Nov-2024												
Month Min	6,853.63	4,537.95	5,189.28	4,801.92	2,707.55	4,205.44	577.76	0.00	400.53	6,262.13	2,044.63	4,662.54
Month Max	10,678.59	6,460.52	7,535.51	6,843.45	5,118.24	6,240.50	587.07	199.19	552.72	13,276.51	5,789.28	6,854.24
Date	Raw Inlet Flow (FI-10)			CC Treated Flow (FIC-98530)			Creighton Flow (FIC-31)			U-Drain Flow (FI-100)		
	Maximum GPM	Minimum GPM	Average GPM	Maximum GPM	Minimum GPM	Average GPM	Maximum GPM	Minimum GPM	Average GPM	Maximum USGPM	Minimum USGPM	Average USGPM
1-Nov	10465.51	6124.42	7346.04	5699.46	3246.52	5345.17	580.23	198.03	551.47	11877.46	2837.10	5726.43
2-Nov	10068.90	6127.60	7187.14	5774.72	3408.52	5364.66	578.62	198.83	541.75	12388.43	3070.59	5763.27
3-Nov	7598.02	6314.49	6977.61	5654.02	5118.24	5404.02	578.89	198.04	550.70	6262.13	5283.98	5822.24
4-Nov	10391.38	5604.50	7138.52	6843.45	3563.22	5660.98	579.92	199.05	538.50	12392.63	2450.23	5502.65
5-Nov	10678.59	6085.73	6894.74	5914.55	3675.28	5664.56	579.86	198.14	552.72	11773.66	2160.46	5475.00
6-Nov	9724.02	4772.50	6008.57	5873.11	3317.78	4955.68	580.26	198.30	531.77	12761.37	2332.69	6175.07
7-Nov	7914.43	4675.36	5189.28	4801.92	3208.53	4205.44	579.01	198.59	522.45	13276.51	4670.18	6854.24
8-Nov	9887.38	5114.01	6601.71	6421.75	3636.69	5424.68	579.48	197.87	506.29	12322.87	2672.99	5728.88
9-Nov	9706.20	5300.06	7406.66	6577.49	3591.93	6238.74	578.60	198.06	501.26	11821.31	2710.19	4832.99
10-Nov	9362.43	4949.08	6957.89	6433.58	3529.14	5838.55	578.30	198.91	503.02	12533.98	2943.72	5269.65
11-Nov	9697.80	4694.01	6044.07	6420.67	3544.71	5161.60	578.59	0.00	400.53	12201.09	2425.02	6072.34
12-Nov	9561.21	4537.95	7051.18	6484.96	3620.92	5991.85	580.43	197.86	539.68	11823.74	2578.68	5093.77
13-Nov	6853.63	5492.14	6276.60	5649.63	4503.52	5095.33	581.78	198.65	546.50	6528.49	5789.28	6137.70
14-Nov	10402.40	5410.09	7075.21	5936.79	3533.58	5542.62	579.61	199.19	517.49	12759.55	2347.18	5618.48
15-Nov	10614.74	6111.56	7429.80	6206.13	4054.71	5935.71	578.70	198.10	522.31	11274.68	2044.63	5152.11
16-Nov	9870.37	6116.05	7368.73	6231.42	4065.16	5849.48	577.76	197.90	517.82	11611.24	2813.07	5220.11
17-Nov	9449.51	5996.12	6859.51	6167.58	3616.79	5431.77	578.71	197.72	510.39	12419.03	3284.47	5730.85
18-Nov	10353.19	6460.52	7501.69	6488.71	3942.40	5950.28	580.91	199.03	533.31	11918.09	2192.65	5013.62
19-Nov	10496.82	6090.98	7499.19	6257.89	4117.71	5966.04	577.95	198.64	531.37	11480.24	2096.60	5000.75
20-Nov	9907.05	5756.28	6911.52	6161.04	3436.78	5706.32	578.33	197.69	513.47	12046.94	2701.03	5299.41
21-Nov	9591.62	5524.52	6422.14	5619.75	3467.58	5116.85	579.50	198.64	544.18	12162.33	2818.81	5985.63
22-Nov	9850.23	4925.18	6314.60	5399.57	4006.93	5087.44	579.12	198.24	550.26	13043.17	2832.65	5992.06
23-Nov	9693.17	5523.38	6714.46	6437.70	3844.60	5612.78	580.08	197.95	521.57	11538.22	2208.64	5432.66
24-Nov	9692.40	5094.28	7290.29	6491.11	4043.07	6240.50	579.01	197.87	528.85	11553.41	2280.94	4662.54
25-Nov	9326.91	5930.73	7535.51	6569.19	3514.32	6030.87	579.23	199.17	526.16	11948.34	3474.33	4947.48
26-Nov	9388.00	5803.12	6710.10	6732.55	2707.55	5649.19	587.07	198.22	526.93	11924.64	2716.40	5511.46
27-Nov	9319.37	5447.80	6290.28	5857.77	3608.71	5108.21	584.06	198.71	547.36	12865.81	3578.51	6049.26
28-Nov	9416.81	5531.92	6316.64	5667.06	3537.19	4898.63	579.19	198.11	534.41	12960.98	3489.06	6283.69
29-Nov	10417.51	4955.37	7406.02	6191.63	3662.85	5792.21	579.34	198.80	547.81	12317.06	2107.79	5238.85
30-Nov	9932.82	6222.85	7234.84	5964.78	3495.07	5659.40	580.47	198.18	545.98	12045.67	2925.79	5428.36
1-Dec												
Average	9,654.41	5,556.42	6,865.35	6,097.67	3,687.33	5,530.99	579.77	191.75	526.88	11,794.44	2,927.92	5,567.38



## Monthly Flow Reading Summary Vermilion WTP

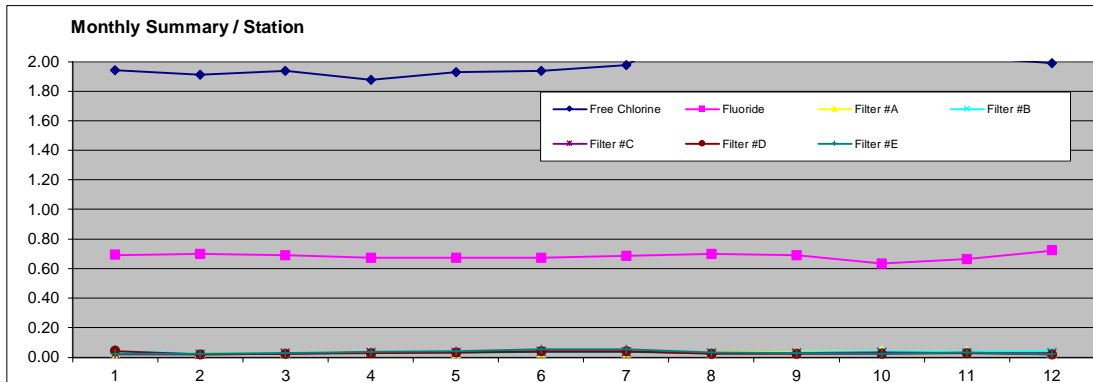
1-Dec-2024												
Month Min	9,421.21	84.52	6,933.02	5,967.31	3,040.85	5,299.55	577.35	-5.73	420.86	5,207.46	918.82	2,938.39
Month Max	12,301.83	7,828.89	9,581.37	8,233.14	6,289.88	7,570.93	679.13	199.05	592.69	12,444.93	3,103.29	5,745.31
Date	Raw Inlet Flow (FI-10)			CC Treated Flow (FIC-98530)			Creighton Flow (FIC-31)			U-Drain Flow (FI-100)		
	Maximum GPM	Minimum GPM	Average GPM	Maximum GPM	Minimum GPM	Average GPM	Maximum GPM	Minimum GPM	Average GPM	Maximum USGPM	Minimum USGPM	Average USGPM
1-Dec	10026.89	5135.77	7233.23	5967.31	3485.77	5655.80	579.40	197.90	544.69	12444.93	2446.17	5416.71
2-Dec	9990.41	6118.84	7024.40	7143.06	3804.38	5740.98	581.59	197.77	524.18	11708.61	2389.79	5341.22
3-Dec	10207.97	84.52	7559.27	6461.61	3696.47	6231.76	585.60	191.75	536.02	11490.33	2401.77	4645.81
4-Dec	10349.60	6520.80	7795.66	6572.65	3988.70	6256.81	580.01	198.78	555.57	11427.04	2409.48	4618.99
5-Dec	10762.69	7006.45	7998.99	6564.40	4045.74	6257.90	579.23	198.31	535.16	11745.07	2217.92	4566.98
6-Dec	11494.18	6239.76	8218.08	6564.16	3588.69	6241.73	580.26	199.05	555.05	11183.27	2074.38	4598.98
7-Dec	12060.54	6411.38	8586.04	6583.77	3802.36	6249.28	579.21	198.37	568.39	11103.23	1673.23	4518.40
8-Dec	11800.25	6418.18	8622.96	6473.52	4262.12	6256.94	579.44	198.44	565.52	11395.61	1580.94	4479.04
9-Dec	11356.89	6298.99	7790.44	6553.11	3040.85	5981.70	581.27	198.29	543.76	11245.14	1945.25	4884.75
10-Dec	9675.22	6081.49	6980.94	6180.44	3967.60	5299.55	579.41	186.59	553.02	12361.86	3103.29	5745.31
11-Dec	11846.37	6058.55	7676.38	6447.83	4145.11	5770.60	581.33	198.90	558.72	11454.23	1746.30	5199.05
12-Dec	11326.71	6301.40	8022.57	6525.58	4235.71	6266.69	580.09	198.73	549.08	11046.90	1681.65	4623.91
13-Dec	11187.31	7156.17	8083.79	6507.10	4047.32	6259.62	579.26	198.76	558.98	11476.07	1836.37	4573.85
14-Dec	11618.79	6160.60	8502.96	7177.95	4318.96	6614.77	581.18	197.19	557.29	11224.31	1532.35	4123.09
15-Dec	11528.58	6448.19	8158.18	6551.35	4177.69	6253.33	579.45	197.55	561.29	11379.23	1569.65	4528.73
16-Dec	10955.66	6297.52	8055.02	7632.62	3716.48	6253.95	581.61	198.03	551.07	11702.42	1999.70	4601.92
17-Dec	10334.13	5951.10	7644.24	6483.49	3652.45	5919.83	579.24	197.06	545.41	12043.62	2546.42	4975.38
18-Dec	10191.64	6032.88	7455.61	6022.92	3493.23	5654.78	651.88	198.36	558.14	12247.57	2779.25	5312.69
19-Dec	10548.76	5269.62	7454.24	6702.98	3628.14	5687.56	654.32	198.69	592.69	11715.93	2268.49	5240.12
20-Dec	11297.33	7061.52	8891.86	7678.42	4612.05	7040.42	654.50	196.89	572.26	10663.73	1519.49	3464.76
21-Dec	10306.75	5874.50	8185.86	7550.60	3934.02	6594.23	656.26	197.89	547.71	11723.08	2227.28	4098.54
22-Dec	11357.78	7143.74	8370.49	7542.23	4684.12	6818.27	579.75	198.66	551.08	10625.09	1619.82	3899.70
23-Dec	10192.06	6544.14	9252.49	7806.60	5958.28	7338.56	679.13	-5.73	549.40	5909.11	2326.24	3142.74
24-Dec	11020.55	5983.38	8033.47	7745.68	4253.56	6779.52	579.47	196.70	459.50	11587.03	1639.59	4222.38
25-Dec	11130.40	6179.74	7362.09	6424.10	3999.86	6048.99	577.35	198.40	420.86	11512.72	1733.60	5092.58
26-Dec	10665.87	5889.27	7404.56	6328.30	4144.41	5969.13	578.54	198.13	443.08	12215.90	2106.64	5213.80
27-Dec	9816.35	7193.02	8383.01	7777.96	6201.37	7054.52	581.48	197.88	499.26	5207.46	2592.16	3863.56
28-Dec	12301.83	7828.89	9581.37	8233.14	6289.88	7570.93	579.89	198.05	513.64	10432.98	918.82	2938.39
29-Dec	11438.72	6436.25	8534.74	7798.85	4800.03	7063.63	580.17	198.19	480.40	10869.26	1279.10	3693.34
30-Dec	10099.63	5583.88	7371.66	7902.51	3649.88	6507.15	583.50	196.05	517.53	11248.23	2373.91	4381.62
31-Dec	9421.21	5937.79	6933.02	6497.59	3775.28	5957.84	578.02	198.27	477.29	12423.50	2888.02	5165.70
1-Jan												
Average	10,848.74	6,117.69	7,973.15	6,916.19	4,174.21	6,309.57	592.96	190.90	533.74	11,123.01	2,046.03	4,553.94



### Annual Turbidity Summary Vermilion WTP

Summary : 2024

Month	Free Chlorine Residual ppm	Fluoride Residual ppm	Filter #A Turbidity NTU	Filter #B Turbidity NTU	Filter #C Turbidity NTU	Filter #D Turbidity NTU	Filter #E Turbidity NTU
January	1.94	0.69	0.03	0.04	0.02	0.04	0.02
February	1.91	0.70	0.03	0.03	0.02	0.02	0.02
March	1.94	0.69	0.03	0.03	0.02	0.02	0.03
April	1.88	0.67	0.03	0.03	0.03	0.03	0.03
May	1.93	0.67	0.03	0.03	0.03	0.03	0.04
June	1.94	0.67	0.03	0.03	0.04	0.04	0.05
July	1.98	0.69	0.03	0.03	0.04	0.04	0.05
August	2.30	0.70	0.03	0.03	0.03	0.02	0.03
September	2.24	0.69	0.03	0.03	0.03	0.02	0.02
October	2.06	0.63	0.04	0.04	0.03	0.02	0.02
November	2.04	0.67	0.04	0.03	0.03	0.03	0.03
December	1.99	0.72	0.03	0.04	0.03	0.02	0.02
<b>Annual Average:</b>	<b>2.01</b>	<b>0.68</b>	<b>0.03</b>	<b>0.03</b>	<b>0.03</b>	<b>0.03</b>	<b>0.03</b>





## Monthly Turbidity Reading Summary Vermilion WTP

1-Jan-2024																					
Month Min	1.98	-0.83	1.78	0.68	0.50	0.63	0.03	0.02	0.02	0.03	0.03	0.03	0.02	0.01	0.01	0.02	-0.25	0.02	0.02	0.01	0.02
Month Max	2.45	1.97	2.09	0.86	0.71	0.78	1.02	0.02	0.03	1.02	0.05	0.06	1.02	0.02	0.03	1.02	0.15	0.16	1.01	0.02	0.03
Date	Chlorine Residual (AI-85)			Fluoride Residual (HFS-Master)			Filter #A Turbidity (AI-98582)			Filter #B Turbidity (AI-98577)			Filter #C Turbidity (AI-98576)			Filter #D Turbidity (D_FILTERTURB)			Filter #E Turbidity (AI-98581)		
	Maximum ppm	Minimum ppm	Average ppm	Maximum ppm	Minimum ppm	Average ppm	Maximum NTU	Minimum NTU	Average NTU	Maximum NTU	Minimum NTU	Average NTU	Maximum NTU	Minimum NTU	Average NTU	Maximum NTU	Minimum NTU	Average NTU	Maximum NTU	Minimum NTU	Average NTU
1-Jan	2.20	1.81	2.02	0.77	0.59	0.71	0.04	0.02	0.02	1.02	0.04	0.05	0.02	0.01	0.01	0.03	0.03	0.03	0.02	0.02	0.02
2-Jan	2.25	1.84	1.99	0.76	0.60	0.70	0.19	0.02	0.02	0.05	0.04	0.05	0.86	0.01	0.02	0.03	0.03	0.03	0.03	0.02	0.02
3-Jan	2.35	1.77	1.97	0.77	0.65	0.71	0.03	0.02	0.02	0.05	0.04	0.05	0.02	0.02	0.02	0.03	0.03	0.03	0.02	0.02	0.02
4-Jan	2.02	1.74	1.88	0.73	0.64	0.68	0.03	0.02	0.02	0.05	0.04	0.05	0.02	0.01	0.02	0.03	0.03	0.03	0.42	0.02	0.02
5-Jan	1.99	1.74	1.86	0.75	0.60	0.67	0.61	0.02	0.03	0.05	0.04	0.05	0.02	0.01	0.02	0.03	0.03	0.03	0.03	0.02	0.02
6-Jan	2.12	1.74	1.89	0.78	0.60	0.72	0.12	0.02	0.03	1.02	0.04	0.05	0.02	0.01	0.02	0.03	0.03	0.03	0.02	0.02	0.02
7-Jan	2.23	1.89	1.97	0.77	0.52	0.64	0.04	0.02	0.03	0.05	0.05	0.05	0.81	0.01	0.02	0.03	0.03	0.03	0.02	0.02	0.02
8-Jan	2.45	1.70	2.03	0.78	0.50	0.64	0.03	0.02	0.03	0.05	0.05	0.05	0.02	0.02	0.02	0.24	0.03	0.03	0.02	0.02	0.02
9-Jan	2.25	1.84	2.02	0.84	0.70	0.78	0.04	0.02	0.02	0.05	0.05	0.05	0.02	0.01	0.02	0.03	0.03	0.03	0.84	0.02	0.02
10-Jan	2.20	0.04	1.93	0.84	0.71	0.78	0.59	0.02	0.03	0.05	0.04	0.05	0.02	0.01	0.01	0.03	0.03	0.03	0.03	0.02	0.02
11-Jan	2.16	1.90	2.04	0.86	0.66	0.78	1.02	0.02	0.03	1.02	0.04	0.06	1.02	0.01	0.02	1.02	0.00	0.08	1.01	0.01	0.02
12-Jan	2.20	1.96	2.07	0.82	0.67	0.76	0.03	0.02	0.03	0.05	0.04	0.04	0.97	0.02	0.03	0.15	0.14	0.14	0.02	0.02	0.02
13-Jan	2.32	1.94	2.05	0.75	0.64	0.68	0.03	0.02	0.03	0.05	0.04	0.04	0.02	0.02	0.02	0.96	0.14	0.15	0.03	0.02	0.02
14-Jan	2.38	1.89	2.06	0.75	0.64	0.69	0.03	0.02	0.03	0.05	0.04	0.04	0.02	0.02	0.02	0.16	0.15	0.16	0.68	0.02	0.02
15-Jan	2.17	1.97	2.09	0.77	0.60	0.69	0.40	0.02	0.03	0.05	0.04	0.04	0.02	0.02	0.02	0.82	0.15	0.15	0.03	0.02	0.02
16-Jan	2.13	1.75	1.98	0.70	0.53	0.63	0.05	0.02	0.03	1.02	0.04	0.05	0.02	0.02	0.02	1.02	-0.25	0.07	0.03	0.02	0.02
17-Jan	2.28	1.78	2.01	0.68	0.58	0.63	0.03	0.02	0.03	0.04	0.04	0.04	0.88	0.02	0.03	0.02	0.01	0.02	0.02	0.02	0.02
18-Jan	2.09	1.79	1.98	0.73	0.65	0.69	0.03	0.02	0.02	0.04	0.04	0.04	0.02	0.02	0.02	0.02	0.01	0.02	0.02	0.02	0.02
19-Jan	2.36	1.78	1.95	0.75	0.62	0.69	0.03	0.02	0.02	0.04	0.03	0.04	0.03	0.02	0.02	1.02	0.01	0.02	0.02	0.02	0.02
20-Jan	2.18	1.81	1.97	0.76	0.66	0.70	0.04	0.02	0.02	0.04	0.03	0.04	0.02	0.02	0.02	0.02	0.01	0.02	0.77	0.02	0.02
21-Jan	2.14	1.75	1.90	0.75	0.64	0.70	0.47	0.02	0.03	0.04	0.03	0.04	0.02	0.02	0.02	0.02	0.01	0.02	0.03	0.02	0.02
22-Jan	2.14	1.73	1.87	0.74	0.58	0.68	0.04	0.02	0.03	1.02	0.03	0.04	0.02	0.02	0.02	0.02	0.01	0.02	0.03	0.02	0.02
23-Jan	2.21	1.76	1.89	0.77	0.63	0.69	0.03	0.02	0.03	0.04	0.03	0.04	0.79	0.02	0.03	0.02	0.01	0.02	0.02	0.02	0.02
24-Jan	2.02	1.58	1.82	0.74	0.67	0.70	0.03	0.02	0.02	0.04	0.03	0.03	0.02	0.02	0.02	0.02	0.01	0.02	0.02	0.02	0.02
25-Jan	2.16	1.61	1.82	0.75	0.67	0.70	0.05	0.02	0.02	0.04	0.03	0.03	0.02	0.02	0.02	1.01	0.02	0.03	0.02	0.02	0.02
26-Jan	2.06	1.68	1.84	0.72	0.61	0.67	0.05	0.02	0.02	0.04	0.03	0.03	0.02	0.02	0.02	0.02	0.02	0.02	0.91	0.02	0.03
27-Jan	2.11	-0.83	1.78	0.72	0.56	0.64	0.64	0.02	0.03	0.05	0.03	0.03	0.03	0.02	0.02	0.03	0.02	0.02	0.03	0.02	0.03
28-Jan	2.14	1.65	1.87	0.72	0.51	0.64	0.04	0.02	0.03	1.02	0.03	0.04	0.79	0.02	0.02	0.02	0.02	0.02	0.03	0.02	0.02
29-Jan	2.03	1.76	1.92	0.73	0.64	0.69	0.03	0.02	0.02	0.03	0.03	0.03	0.02	0.02	0.02	1.01	0.01	0.02	0.03	0.02	0.02
30-Jan	1.98	1.78	1.89	0.72	0.65	0.69	0.03	0.02	0.02	0.03	0.03	0.03	0.02	0.02	0.02	0.02	0.02	0.02	0.02	0.02	0.02
31-Jan	2.23	0.03	1.87	0.73	0.63	0.69	0.03	0.02	0.02	0.03	0.03	0.03	0.02	0.02	0.02	0.02	0.02	0.02	0.86	0.02	0.03
1-Feb																					
Average	2.18	1.59	1.94	0.76	0.62	0.69	0.16	0.02	0.03	0.23	0.04	0.04	0.21	0.02	0.02	0.26	0.03	0.04	0.20	0.02	0.02



## Monthly Turbidity Reading Summary Vermilion WTP

1-Feb-2024																					
Month Min	1.97	0.04	1.82	0.74	0.20	0.65	0.03	-0.17	0.02	0.03	-0.17	0.02	0.02	-0.17	0.02	0.02	-0.18	0.01	0.02	-0.17	0.02
Month Max	2.40	1.94	2.05	1.91	0.66	0.76	1.00	0.03	0.03	1.02	0.03	0.03	1.01	0.02	0.02	1.02	0.02	0.02	1.01	0.02	0.03
Date	Chlorine Residual (AI-85)			Fluoride Residual (HFS-Master)			Filter #A Turbidity (AI-98582)			Filter #B Turbidity (AI-98577)			Filter #C Turbidity (AI-98576)			Filter #D Turbidity (AI-98580)			Filter #E Turbidity (AI-98581)		
	Maximum ppm	Minimum ppm	Average ppm	Maximum ppm	Minimum ppm	Average ppm	Maximum NTU	Minimum NTU	Average NTU	Maximum NTU	Minimum NTU	Average NTU	Maximum NTU	Minimum NTU	Average NTU	Maximum NTU	Minimum NTU	Average NTU	Maximum NTU	Minimum NTU	Average NTU
1-Feb	2.09	1.65	1.84	0.79	0.66	0.72	0.64	0.02	0.03	0.03	0.02	0.03	0.02	0.02	0.02	0.02	0.02	0.02	0.03	0.02	0.02
2-Feb	1.99	1.73	1.89	0.79	0.62	0.73	0.03	0.02	0.02	1.02	0.02	0.03	0.02	0.02	0.02	0.02	0.02	0.02	0.03	0.02	0.02
3-Feb	2.01	1.72	1.87	0.77	0.64	0.70	0.03	0.02	0.02	0.03	0.02	0.03	0.84	0.02	0.02	0.03	0.01	0.02	0.02	0.02	0.02
4-Feb	2.16	1.74	1.84	0.74	0.64	0.69	0.05	0.02	0.02	0.03	0.02	0.03	0.02	0.02	0.02	1.01	0.01	0.02	0.03	0.02	0.02
5-Feb	2.05	1.74	1.86	0.78	0.65	0.70	1.00	0.00	0.02	1.02	0.00	0.03	1.01	0.01	0.02	1.02	0.01	0.02	1.01	0.00	0.03
6-Feb	2.03	1.74	1.89	0.78	0.59	0.70	0.54	0.02	0.03	0.03	0.03	0.03	0.02	0.01	0.02	0.02	0.01	0.02	0.03	0.02	0.02
7-Feb	2.12	1.78	1.89	0.75	0.62	0.70	0.03	0.02	0.03	1.02	0.02	0.03	0.02	0.02	0.02	0.02	0.01	0.02	0.02	0.02	0.02
8-Feb	2.00	1.76	1.88	0.78	0.62	0.70	0.03	0.02	0.02	0.03	0.02	0.03	0.81	0.01	0.02	0.02	0.01	0.02	0.02	0.02	0.02
9-Feb	2.26	1.50	1.82	0.78	0.61	0.70	0.03	0.02	0.02	0.03	0.02	0.03	0.02	0.02	0.02	0.97	0.01	0.02	0.02	0.02	0.02
10-Feb	2.14	1.67	1.83	0.79	0.62	0.70	0.04	0.02	0.02	0.03	0.02	0.03	0.02	0.02	0.02	0.02	0.01	0.02	0.72	0.02	0.02
11-Feb	1.97	1.74	1.84	0.82	0.58	0.72	0.74	0.02	0.03	0.03	0.02	0.03	0.02	0.02	0.02	0.02	0.01	0.02	0.03	0.02	0.02
12-Feb	2.20	1.76	1.90	0.88	0.62	0.75	0.04	0.02	0.03	1.02	0.02	0.03	0.02	0.02	0.02	0.02	0.01	0.02	0.03	0.02	0.02
13-Feb	2.30	1.83	1.94	0.86	0.65	0.76	0.03	0.02	0.03	0.03	0.02	0.03	0.89	0.02	0.02	0.02	0.01	0.02	0.03	0.02	0.02
14-Feb	2.17	1.75	1.94	0.79	0.63	0.72	0.04	0.02	0.03	0.03	0.02	0.03	0.02	0.02	0.02	1.01	0.01	0.02	0.02	0.02	0.02
15-Feb	2.21	1.76	1.91	0.74	0.61	0.67	0.03	0.02	0.02	0.03	0.02	0.03	0.02	0.02	0.02	0.02	0.01	0.02	0.72	0.02	0.03
16-Feb	2.05	1.61	1.87	0.81	0.51	0.67	0.84	0.02	0.03	0.03	0.02	0.02	0.02	0.02	0.02	0.02	0.01	0.02	0.03	0.02	0.02
17-Feb	2.21	1.65	1.91	0.81	0.54	0.66	0.04	0.02	0.03	1.02	0.02	0.03	0.02	0.02	0.02	0.02	0.01	0.02	0.03	0.02	0.02
18-Feb	2.23	1.80	1.94	0.79	0.60	0.66	0.04	0.02	0.03	0.03	0.02	0.02	0.85	0.02	0.02	0.02	0.01	0.02	0.03	0.02	0.02
19-Feb	2.18	1.81	1.98	0.82	0.59	0.71	0.03	0.02	0.02	0.03	0.02	0.02	0.02	0.02	0.02	1.02	0.01	0.02	0.02	0.02	0.02
20-Feb	2.12	1.70	1.86	0.78	0.63	0.70	0.04	0.02	0.02	0.03	0.02	0.02	0.02	0.02	0.02	0.02	0.01	0.02	0.65	0.02	0.02
21-Feb	2.16	1.81	1.92	0.80	0.56	0.65	0.45	0.02	0.03	0.03	0.02	0.02	0.02	0.02	0.02	0.02	0.01	0.02	0.03	0.02	0.02
22-Feb	2.23	1.70	1.88	0.85	0.57	0.74	0.03	0.02	0.03	1.02	0.02	0.03	0.02	0.02	0.02	0.02	0.02	0.02	0.03	0.02	0.02
23-Feb	2.21	1.88	2.01	0.75	0.57	0.66	0.04	0.02	0.03	0.03	0.02	0.02	1.00	0.02	0.02	0.02	0.01	0.02	0.03	0.02	0.02
24-Feb	2.36	1.70	1.98	0.80	0.59	0.69	0.03	0.02	0.03	0.03	0.02	0.02	0.02	0.02	0.02	1.02	0.01	0.02	0.02	0.02	0.02
25-Feb	2.27	1.94	2.05	0.77	0.61	0.68	0.04	0.02	0.02	0.03	0.02	0.02	0.02	0.02	0.02	0.02	0.01	0.02	0.61	0.02	0.03
26-Feb	2.25	1.88	2.02	0.80	0.57	0.69	0.71	0.02	0.03	0.03	0.02	0.02	0.02	0.02	0.02	0.02	0.01	0.02	0.03	0.02	0.02
27-Feb	2.32	0.04	1.98	0.78	0.57	0.69	0.04	0.03	0.03	1.02	0.02	0.03	0.02	0.02	0.02	0.02	0.01	0.02	0.03	0.02	0.02
28-Feb	2.34	1.86	1.98	0.83	0.63	0.70	0.06	-0.17	0.03	0.03	-0.17	0.02	0.95	-0.17	0.02	0.02	-0.18	0.02	0.03	-0.17	0.02
29-Feb	2.40	1.90	2.03	0.77	0.66	0.71	0.04	0.02	0.02	0.03	0.02	0.02	0.02	0.02	0.02	0.98	0.01	0.02	0.02	0.02	0.02
1-Mar																					
Average	2.16	1.69	1.91	0.83	0.59	0.70	0.20	0.01	0.03	0.28	0.01	0.03	0.24	0.01	0.02	0.23	0.01	0.02	0.15	0.01	0.02



## Monthly Turbidity Reading Summary Vermilion WTP

1-Mar-2024																					
Month Min	1.98	0.03	1.78	0.70	0.20	0.57	0.03	0.02	0.02	0.03	0.02	0.02	0.02	0.02	0.02	0.01	0.02	0.03	0.02	0.02	
Month Max	2.37	1.94	2.11	2.00	0.71	0.77	0.90	0.03	0.03	1.02	0.03	0.04	1.02	0.03	0.03	1.02	0.03	1.00	0.03	0.03	
Date	Chlorine Residual (AI-85)			Fluoride Residual (HFS-Master)			Filter #A Turbidity (AI-98582)			Filter #B Turbidity (AI-98577)			Filter #C Turbidity (AI-98576)			Filter #D Turbidity (AI-98580)			Filter #E Turbidity (AI-98581)		
	Maximum ppm	Minimum ppm	Average ppm	Maximum ppm	Minimum ppm	Average ppm	Maximum NTU	Minimum NTU	Average NTU	Maximum NTU	Minimum NTU	Average NTU	Maximum NTU	Minimum NTU	Average NTU	Maximum NTU	Minimum NTU	Average NTU	Maximum NTU	Minimum NTU	Average NTU
1-Mar	2.14	1.87	2.00	0.76	0.62	0.71	0.04	0.02	0.02	0.03	0.02	0.02	0.02	0.02	0.02	0.02	0.02	0.02	0.01	0.02	0.03
2-Mar	2.30	1.80	1.99	0.78	0.53	0.66	0.53	0.02	0.03	0.03	0.02	0.02	0.02	0.02	0.02	0.02	0.02	0.02	0.01	0.02	0.03
3-Mar	2.23	1.86	1.99	0.87	0.61	0.72	0.04	0.03	0.03	1.02	0.02	0.03	0.02	0.02	0.02	0.02	0.01	0.02	0.03	0.02	0.02
4-Mar	2.25	1.79	1.95	0.80	0.61	0.70	0.04	0.02	0.03	0.04	0.02	0.03	1.02	0.02	0.03	0.02	0.01	0.02	0.03	0.02	0.02
5-Mar	2.07	1.65	1.84	0.77	0.60	0.65	0.04	0.02	0.03	0.03	0.02	0.03	0.03	0.02	0.03	1.02	0.01	0.02	0.03	0.02	0.02
6-Mar	2.07	1.74	1.84	0.81	0.65	0.71	0.03	0.02	0.02	0.03	0.02	0.02	0.02	0.02	0.02	0.02	0.02	0.02	0.85	0.02	0.03
7-Mar	1.98	1.69	1.82	2.00	0.20	0.57	0.88	0.02	0.03	0.03	0.02	0.02	0.03	0.02	0.02	0.02	0.02	0.02	0.04	0.02	0.03
8-Mar	2.33	1.70	2.03	0.80	0.61	0.70	0.04	0.03	0.03	1.02	0.02	0.03	0.02	0.02	0.02	0.02	0.02	0.02	0.03	0.02	0.03
9-Mar	2.29	1.94	2.11	0.77	0.67	0.72	0.11	0.02	0.03	0.03	0.02	0.03	1.02	0.02	0.03	0.02	0.02	0.02	0.03	0.02	0.03
10-Mar	2.23	1.87	2.01	0.81	0.70	0.73	0.06	0.02	0.03	0.03	0.02	0.03	0.03	0.02	0.02	1.02	0.02	0.03	0.03	0.02	0.03
11-Mar	2.25	1.83	1.94	1.09	0.20	0.66	0.05	0.02	0.03	0.04	0.02	0.03	0.03	0.02	0.02	0.02	0.02	0.95	0.02	0.03	
12-Mar	2.16	1.78	1.95	0.78	0.51	0.62	0.68	0.02	0.03	0.03	0.02	0.03	0.03	0.02	0.02	0.02	0.02	0.02	0.04	0.03	0.03
13-Mar	2.27	1.89	2.00	0.75	0.51	0.60	0.04	0.03	0.03	1.02	0.02	0.04	0.03	0.02	0.03	0.03	0.02	0.02	0.04	0.03	0.03
14-Mar	2.27	1.94	2.08	0.70	0.55	0.60	0.04	0.03	0.03	0.04	0.03	0.03	1.02	0.02	0.03	0.03	0.02	0.02	0.03	0.03	0.03
15-Mar	2.28	1.88	2.00	0.84	0.55	0.69	0.07	0.03	0.03	0.04	0.03	0.03	0.03	0.03	0.03	1.02	0.02	0.03	0.03	0.03	0.03
16-Mar	2.19	1.84	1.92	0.82	0.70	0.75	0.04	0.03	0.03	0.04	0.03	0.03	0.03	0.02	0.03	0.03	0.02	0.02	0.77	0.03	0.03
17-Mar	2.25	1.83	1.93	0.86	0.70	0.75	0.66	0.03	0.03	0.04	0.02	0.03	0.03	0.02	0.03	0.03	0.02	0.02	0.04	0.03	0.03
18-Mar	2.28	1.88	1.98	0.88	0.63	0.74	0.90	0.03	0.03	1.02	0.02	0.04	0.81	0.02	0.03	1.02	0.02	0.02	1.00	0.02	0.03
19-Mar	2.27	1.77	1.92	0.85	0.69	0.76	0.04	0.03	0.03	0.03	0.02	0.03	1.02	0.02	0.03	0.02	0.02	0.02	0.03	0.02	0.02
20-Mar	2.35	1.79	1.99	0.87	0.71	0.76	0.05	0.03	0.03	0.03	0.02	0.02	0.03	0.02	0.02	0.99	0.02	0.03	0.03	0.02	0.02
21-Mar	2.37	1.85	1.98	0.87	0.63	0.77	0.04	0.02	0.03	0.03	0.02	0.02	0.02	0.02	0.02	0.04	0.02	0.02	0.75	0.02	0.03
22-Mar	2.23	1.85	1.96	0.80	0.54	0.65	0.67	0.02	0.03	0.03	0.02	0.02	0.03	0.02	0.02	0.02	0.02	0.02	0.03	0.02	0.02
23-Mar	2.11	1.74	1.93	0.77	0.54	0.64	0.06	0.03	0.03	1.02	0.02	0.03	0.02	0.02	0.02	0.02	0.02	0.02	0.03	0.02	0.02
24-Mar	2.09	1.84	1.93	0.70	0.60	0.64	0.04	0.03	0.03	0.03	0.02	0.03	1.02	0.02	0.03	0.02	0.02	0.02	0.03	0.02	0.02
25-Mar	2.07	1.68	1.89	0.79	0.61	0.69	0.04	0.02	0.03	0.03	0.02	0.02	0.03	0.02	0.02	1.02	0.01	0.02	0.03	0.02	0.03
26-Mar	2.33	0.03	1.90	0.76	0.60	0.69	0.07	0.02	0.03	0.03	0.02	0.02	0.03	0.02	0.02	0.02	0.02	0.02	0.74	0.02	0.03
27-Mar	2.27	1.58	1.96	0.77	0.65	0.70	0.84	0.02	0.03	0.03	0.02	0.02	0.02	0.02	0.02	0.02	0.02	0.02	0.03	0.02	0.03
28-Mar	2.10	1.59	1.84	0.76	0.59	0.68	0.05	0.03	0.03	1.02	0.02	0.03	0.02	0.02	0.02	0.02	0.01	0.02	0.03	0.02	0.03
29-Mar	2.01	1.66	1.81	0.77	0.65	0.69	0.05	0.03	0.03	0.04	0.02	0.03	1.02	0.02	0.03	0.02	0.01	0.02	0.03	0.02	0.02
30-Mar	2.11	1.59	1.78	0.77	0.65	0.68	0.04	0.02	0.03	0.06	0.02	0.02	0.03	0.02	0.02	1.02	0.01	0.02	0.03	0.02	0.02
31-Mar	2.06	1.71	1.83	0.75	0.65	0.68	0.03	0.02	0.03	0.03	0.02	0.02	0.02	0.02	0.02	0.02	0.02	0.60	0.02	0.03	
1-Apr																					
Average	2.20	1.73	1.94	0.84	0.59	0.69	0.20	0.02	0.03	0.22	0.02	0.03	0.24	0.02	0.02	0.25	0.02	0.02	0.23	0.02	0.03



## Monthly Turbidity Reading Summary Vermilion WTP

1-Apr-2024																					
Month Min	1.94	0.03	1.78	0.68	0.20	0.59	0.05	-0.17	0.03	0.03	-0.18	0.02	0.02	-0.18	0.02	0.02	-0.17	0.02	0.03	0.02	0.03
Month Max	3.29	1.85	1.98	2.00	0.74	0.80	0.82	0.04	0.04	1.02	0.03	0.04	1.02	0.03	0.04	1.02	0.03	0.04	0.86	0.04	0.05
Date	Chlorine Residual (AI-85)			Fluoride Residual (HFS-Master)			Filter #A Turbidity (AI-98582)			Filter #B Turbidity (AI-98577)			Filter #C Turbidity (AI-98576)			Filter #D Turbidity (AI-98580)			Filter #E Turbidity (AI-98581)		
	Maximum ppm	Minimum ppm	Average ppm	Maximum ppm	Minimum ppm	Average ppm	Maximum NTU	Minimum NTU	Average NTU	Maximum NTU	Minimum NTU	Average NTU	Maximum NTU	Minimum NTU	Average NTU	Maximum NTU	Minimum NTU	Average NTU	Maximum NTU	Minimum NTU	Average NTU
1-Apr	1.94	1.75	1.83	0.74	0.58	0.66	0.55	0.02	0.03	0.03	0.02	0.02	0.02	0.02	0.02	0.02	0.02	0.02	0.03	0.02	0.03
2-Apr	2.10	1.34	1.83	0.78	0.31	0.63	0.05	0.03	0.03	1.02	0.02	0.03	0.05	0.02	0.02	0.04	0.02	0.02	0.04	0.02	0.03
3-Apr	2.00	1.72	1.86	0.75	0.58	0.66	0.10	0.03	0.03	0.05	0.02	0.03	1.00	0.02	0.03	0.02	0.02	0.02	0.03	0.02	0.03
4-Apr	2.07	1.13	1.78	2.00	0.21	0.74	0.06	-0.17	0.03	0.05	-0.18	0.03	0.03	-0.18	0.03	0.97	-0.17	0.03	0.06	0.02	0.03
5-Apr	2.25	1.72	1.88	0.81	0.63	0.71	0.06	0.03	0.03	0.04	0.02	0.03	0.03	0.02	0.03	0.03	0.02	0.02	0.76	0.02	0.03
6-Apr	2.21	1.59	1.93	0.82	0.55	0.67	0.56	0.03	0.03	0.04	0.02	0.03	0.03	0.02	0.03	0.03	0.02	0.02	0.04	0.03	0.03
7-Apr	2.23	1.56	1.88	0.78	0.57	0.68	0.05	0.03	0.04	1.02	0.03	0.04	0.03	0.03	0.03	0.03	0.02	0.03	0.04	0.03	0.04
8-Apr	2.03	1.76	1.83	0.74	0.61	0.66	0.07	0.03	0.04	0.04	0.03	0.03	1.02	0.03	0.04	0.03	0.02	0.03	0.04	0.03	0.04
9-Apr	2.08	1.69	1.82	0.70	0.61	0.65	0.07	0.03	0.04	0.04	0.03	0.03	0.04	0.03	0.03	1.01	0.02	0.03	0.04	0.03	0.04
10-Apr	2.03	1.71	1.79	0.75	0.55	0.63	0.10	0.03	0.04	0.07	0.03	0.03	0.27	0.03	0.03	0.04	0.03	0.03	0.66	0.03	0.04
11-Apr	1.94	1.70	1.80	0.68	0.52	0.61	0.49	0.03	0.04	0.08	0.03	0.03	0.36	0.03	0.03	0.03	0.03	0.03	0.05	0.04	0.04
12-Apr	2.01	1.73	1.83	0.72	0.50	0.59	0.05	0.03	0.04	1.02	0.03	0.04	0.04	0.03	0.03	0.03	0.02	0.03	0.05	0.03	0.04
13-Apr	2.04	1.72	1.87	0.70	0.56	0.61	0.08	0.03	0.04	0.10	0.03	0.03	1.02	0.03	0.04	0.03	0.02	0.03	0.04	0.03	0.04
14-Apr	2.07	1.76	1.87	0.99	0.20	0.60	0.06	0.03	0.04	0.05	0.03	0.04	0.04	0.03	0.04	1.02	0.02	0.04	0.05	0.03	0.04
15-Apr	2.22	1.81	1.91	0.75	0.61	0.67	0.07	0.03	0.04	0.12	0.03	0.04	0.04	0.03	0.04	0.04	0.03	0.03	0.64	0.04	0.05
16-Apr	2.12	1.81	1.95	0.76	0.57	0.68	0.06	0.03	0.04	0.05	0.03	0.04	0.04	0.03	0.04	0.04	0.03	0.03	0.05	0.04	0.05
17-Apr	2.16	1.85	1.98	0.85	0.60	0.71	0.49	0.04	0.04	1.02	0.03	0.04	0.04	0.03	0.03	0.03	0.03	0.03	0.05	0.03	0.04
18-Apr	2.23	1.60	1.95	0.91	0.74	0.80	0.05	0.03	0.04	0.13	0.03	0.04	1.02	0.03	0.04	0.03	0.02	0.03	0.04	0.03	0.04
19-Apr	2.20	1.51	1.91	0.92	0.67	0.76	0.06	0.03	0.03	0.04	0.03	0.03	0.04	0.03	0.03	0.97	0.02	0.03	0.04	0.03	0.03
20-Apr	3.29	1.40	1.96	0.78	0.65	0.71	0.06	0.03	0.03	0.04	0.03	0.03	0.03	0.03	0.03	0.04	0.02	0.03	0.81	0.03	0.03
21-Apr	2.36	1.51	1.95	0.80	0.61	0.71	0.68	0.03	0.03	0.04	0.03	0.03	0.03	0.03	0.03	0.03	0.02	0.02	0.04	0.03	0.03
22-Apr	2.13	1.43	1.82	0.77	0.49	0.68	0.07	0.03	0.03	1.02	0.03	0.04	0.03	0.02	0.03	0.03	0.02	0.02	0.04	0.03	0.03
23-Apr	2.28	0.03	1.84	0.70	0.59	0.63	0.82	0.00	0.03	0.93	0.00	0.03	1.02	0.02	0.03	0.96	0.00	0.03	0.86	0.02	0.03
24-Apr	2.21	1.81	1.93	0.78	0.56	0.65	0.07	0.03	0.03	0.04	0.02	0.03	0.04	0.03	0.03	1.00	0.02	0.03	0.03	0.02	0.03
25-Apr	2.04	1.80	1.91	0.75	0.61	0.68	0.05	0.03	0.03	0.03	0.02	0.03	0.03	0.02	0.03	0.03	0.02	0.03	0.58	0.02	0.03
26-Apr	2.02	1.61	1.84	0.76	0.58	0.68	0.63	0.02	0.04	0.08	0.02	0.03	0.07	0.02	0.03	0.07	0.02	0.03	0.09	0.02	0.03
27-Apr	2.07	1.67	1.84	0.75	0.55	0.65	0.13	0.03	0.03	1.02	0.02	0.03	0.03	0.02	0.02	0.03	0.02	0.02	0.03	0.02	0.03
28-Apr	2.16	1.70	1.86	0.75	0.58	0.65	0.21	0.03	0.03	0.03	0.02	0.03	1.00	0.02	0.03	0.03	0.02	0.02	0.03	0.02	0.03
29-Apr	2.33	1.73	1.93	0.81	0.60	0.70	0.10	0.02	0.03	0.06	0.02	0.02	0.03	0.02	0.03	0.74	0.02	0.03	0.03	0.02	0.03
30-Apr	2.17	1.79	1.93	0.83	0.67	0.75	0.05	0.02	0.03	0.08	0.02	0.02	0.03	0.02	0.02	0.03	0.02	0.02	0.49	0.02	0.03
1-May																					
Average	2.17	1.60	1.88	0.82	0.56	0.67	0.20	0.02	0.03	0.28	0.02	0.03	0.25	0.02	0.03	0.25	0.01	0.03	0.19	0.03	0.03



## Monthly Turbidity Reading Summary Vermilion WTP

1-May-2024																					
Month Min	1.99	0.02	1.82	0.63	-0.24	0.56	0.03	-0.24	0.02	0.03	-0.24	0.02	0.03	-0.24	0.02	0.03	-0.24	0.02	0.03	-0.24	0.03
Month Max	3.49	1.85	2.12	2.00	0.69	0.75	0.50	0.03	0.03	1.02	0.02	0.05	0.97	0.03	0.04	0.91	0.03	0.04	1.01	0.05	0.05
Date	Chlorine Residual (AI-85)			Fluoride Residual (HFS-Master)			Filter #A Turbidity (AI-98582)			Filter #B Turbidity (AI-98577)			Filter #C Turbidity (AI-98576)			Filter #D Turbidity (AI-98580)			Filter #E Turbidity (AI-98581)		
	Maximum ppm	Minimum ppm	Average ppm	Maximum ppm	Minimum ppm	Average ppm	Maximum NTU	Minimum NTU	Average NTU	Maximum NTU	Minimum NTU	Average NTU	Maximum NTU	Minimum NTU	Average NTU	Maximum NTU	Minimum NTU	Average NTU	Maximum NTU	Minimum NTU	Average NTU
1-May	2.13	1.72	1.93	0.92	0.53	0.72	0.48	0.02	0.03	0.03	0.02	0.02	0.03	0.02	0.02	0.03	0.02	0.02	0.03	0.02	0.03
2-May	2.26	1.80	1.94	0.68	0.47	0.61	0.05	0.03	0.03	1.02	0.02	0.03	0.03	0.02	0.02	0.03	0.02	0.02	0.03	0.02	0.03
3-May	2.05	1.76	1.94	0.63	0.48	0.56	0.05	0.03	0.03	0.05	0.02	0.03	0.97	0.03	0.03	0.03	0.02	0.02	0.03	0.04	0.03
4-May	2.18	1.82	1.95	0.72	0.45	0.64	0.06	0.03	0.03	0.09	0.02	0.03	0.04	0.02	0.03	0.91	0.02	0.03	0.04	0.02	0.03
5-May	2.25	1.80	1.96	0.71	0.58	0.64	0.09	0.02	0.03	0.05	0.02	0.03	0.03	0.02	0.03	0.05	0.02	0.03	0.04	0.02	0.03
6-May	2.08	1.76	1.92	0.72	0.57	0.64	0.42	0.02	0.03	0.04	0.02	0.02	0.04	0.03	0.03	0.03	0.02	0.03	0.04	0.03	0.03
7-May	1.99	1.72	1.85	0.71	0.47	0.65	0.05	0.03	0.03	1.02	0.02	0.04	0.03	0.03	0.03	0.03	0.02	0.03	0.05	0.03	0.04
8-May	2.30	0.02	1.82	0.70	-0.16	0.56	0.07	-0.24	0.03	0.09	-0.24	0.05	0.79	-0.24	0.04	0.08	-0.24	0.03	0.09	-0.24	0.04
9-May	2.31	1.85	2.06	0.71	0.62	0.66	0.21	0.03	0.03	0.05	0.02	0.03	0.04	0.03	0.03	0.73	0.03	0.03	0.04	0.04	0.04
10-May	2.30	1.50	1.96	0.82	0.60	0.72	0.11	0.02	0.03	0.05	0.02	0.02	0.04	0.03	0.03	0.03	0.02	0.03	0.44	0.03	0.04
11-May	2.30	1.50	1.90	0.80	0.61	0.73	0.37	0.02	0.03	0.04	0.02	0.02	0.03	0.03	0.03	0.03	0.02	0.03	0.04	0.03	0.04
12-May	2.26	1.81	2.02	0.82	0.52	0.73	0.18	0.03	0.03	1.02	0.02	0.03	0.03	0.02	0.03	0.03	0.02	0.03	0.04	0.03	0.04
13-May	2.08	1.76	1.90	0.77	0.61	0.71	0.03	0.02	0.03	0.04	0.02	0.02	0.03	0.02	0.03	0.03	0.02	0.02	0.04	0.03	0.04
14-May	2.34	1.84	2.02	0.78	0.59	0.68	0.06	0.02	0.03	0.07	0.02	0.02	0.81	0.03	0.03	0.03	0.02	0.03	0.04	0.03	0.04
15-May	3.49	1.67	2.12	0.74	0.66	0.70	0.07	0.02	0.03	0.06	0.02	0.02	0.04	0.03	0.03	0.03	0.02	0.03	0.04	0.03	0.04
16-May	2.17	1.73	1.88	0.79	0.64	0.71	0.10	0.02	0.03	0.07	0.02	0.02	0.03	0.03	0.03	0.74	0.02	0.03	0.09	0.03	0.04
17-May	2.09	1.63	1.89	0.79	0.64	0.71	0.07	0.02	0.02	0.04	0.02	0.02	0.04	0.03	0.03	0.03	0.02	0.03	1.01	0.03	0.04
18-May	2.14	1.79	1.92	0.83	0.69	0.75	0.42	0.02	0.03	0.03	0.02	0.02	0.03	0.03	0.03	0.03	0.02	0.03	0.05	0.04	0.04
19-May	2.12	1.77	1.94	0.89	0.60	0.75	0.11	0.02	0.03	1.02	0.02	0.03	0.03	0.03	0.03	0.03	0.02	0.03	0.05	0.04	0.04
20-May	2.09	1.72	1.90	0.85	0.61	0.70	0.05	0.02	0.03	0.04	0.02	0.03	0.63	0.03	0.03	0.03	0.02	0.03	0.05	0.04	0.04
21-May	2.07	1.72	1.90	0.72	0.56	0.64	0.05	0.03	0.03	0.04	0.02	0.03	0.04	0.03	0.03	0.63	0.03	0.03	0.07	0.04	0.04
22-May	2.33	0.03	1.92	0.63	0.53	0.57	0.05	0.03	0.03	0.06	0.02	0.03	0.04	0.03	0.03	0.04	0.03	0.04	0.35	0.04	0.05
23-May	2.13	1.70	1.89	0.70	0.43	0.58	0.50	0.02	0.03	0.03	0.02	0.03	0.08	0.03	0.03	0.04	0.03	0.04	0.06	0.05	0.05
24-May	2.19	1.72	1.88	0.83	0.59	0.72	0.08	0.03	0.03	1.01	0.02	0.03	0.04	0.03	0.03	0.04	0.03	0.03	0.06	0.05	0.05
25-May	2.10	1.69	1.90	0.78	0.69	0.73	0.07	0.03	0.03	0.06	0.02	0.03	0.61	0.03	0.03	0.04	0.03	0.03	0.05	0.04	0.05
26-May	2.12	1.69	1.89	0.79	0.69	0.73	0.06	0.02	0.03	0.08	0.02	0.03	0.04	0.03	0.03	0.57	0.03	0.03	0.05	0.04	0.05
27-May	2.09	1.73	1.91	2.00	0.20	0.67	0.30	0.02	0.03	0.09	0.02	0.02	0.03	0.03	0.03	0.03	0.03	0.03	0.05	0.04	0.04
28-May	2.21	1.75	1.93	0.68	0.58	0.62	0.04	0.02	0.03	0.04	0.02	0.02	0.04	0.03	0.03	0.03	0.03	0.03	0.47	0.04	0.05
29-May	2.14	1.74	1.93	0.80	0.59	0.70	0.43	0.02	0.03	0.05	0.02	0.02	0.03	0.03	0.03	0.03	0.03	0.03	0.05	0.04	0.04
30-May	2.14	1.73	1.88	1.99	-0.04	0.69	0.06	0.03	0.03	1.02	0.02	0.03	0.03	0.03	0.03	0.04	0.03	0.03	0.05	0.04	0.04
31-May	2.21	1.77	1.91	2.00	-0.24	0.64	0.05	0.03	0.03	0.04	0.02	0.03	0.64	0.03	0.03	0.04	0.03	0.03	0.07	0.04	0.04
1-Jun																					
Average	2.22	1.62	1.93	0.88	0.50	0.67	0.15	0.02	0.03	0.24	0.01	0.03	0.17	0.02	0.03	0.15	0.02	0.03	0.13	0.03	0.04



## Monthly Turbidity Reading Summary Vermilion WTP

1-Jun-2024																					
Month Min	1.95	0.04	1.83	0.71	-0.25	0.21	0.05	0.02	0.03	0.04	0.02	0.02	0.04	0.03	0.03	0.04	0.02	0.03	0.05	0.04	0.04
Month Max	2.31	1.89	2.04	2.00	0.73	0.82	0.84	0.04	0.04	1.02	0.04	0.04	0.78	0.04	0.04	0.81	0.04	0.05	0.59	0.06	0.07
Date	Chlorine Residual (AI-85)			Fluoride Residual (HFS-Master)			Filter #A Turbidity (AI-98582)			Filter #B Turbidity (AI-98577)			Filter #C Turbidity (AI-98576)			Filter #D Turbidity (AI-98580)			Filter #E Turbidity (AI-98581)		
	Maximum ppm	Minimum ppm	Average ppm	Maximum ppm	Minimum ppm	Average ppm	Maximum NTU	Minimum NTU	Average NTU	Maximum NTU	Minimum NTU	Average NTU	Maximum NTU	Minimum NTU	Average NTU	Maximum NTU	Minimum NTU	Average NTU	Maximum NTU	Minimum NTU	Average NTU
1-Jun	2.14	1.79	1.90	0.75	0.60	0.68	0.11	0.02	0.03	0.04	0.02	0.02	0.05	0.03	0.03	0.55	0.02	0.03	0.05	0.04	0.04
2-Jun	2.00	1.69	1.86	0.75	0.66	0.70	0.15	0.02	0.03	0.08	0.02	0.02	0.04	0.03	0.03	0.04	0.03	0.03	0.04	0.03	0.04
3-Jun	2.11	1.42	1.84	0.75	0.20	0.43	0.14	0.02	0.03	0.19	0.02	0.02	0.04	0.03	0.03	0.04	0.03	0.03	0.04	0.03	0.04
4-Jun	2.31	1.68	1.92	2.00	-0.16	0.21	0.41	0.03	0.03	0.06	0.02	0.03	0.04	0.03	0.03	0.04	0.03	0.04	0.06	0.05	0.05
5-Jun	2.13	1.52	1.83	2.00	-0.25	0.46	0.15	0.03	0.03	1.00	0.02	0.03	0.04	0.03	0.03	0.04	0.03	0.04	0.06	0.04	0.05
6-Jun	2.21	1.89	2.04	1.26	0.73	0.81	0.10	0.03	0.03	0.05	0.03	0.03	0.57	0.03	0.04	0.04	0.03	0.04	0.06	0.05	0.05
7-Jun	2.24	1.87	2.00	0.92	0.71	0.82	0.16	0.03	0.03	0.04	0.03	0.03	0.04	0.03	0.04	0.72	0.03	0.04	0.06	0.04	0.05
8-Jun	2.28	1.88	2.04	0.81	0.71	0.76	0.06	0.03	0.03	0.04	0.03	0.03	0.04	0.03	0.04	0.04	0.03	0.04	0.06	0.04	0.05
9-Jun	2.20	1.72	1.92	0.81	0.68	0.75	0.06	0.03	0.03	0.07	0.03	0.03	0.04	0.03	0.04	0.05	0.03	0.04	0.59	0.04	0.05
10-Jun	2.17	1.74	1.95	0.81	0.66	0.73	0.49	0.03	0.03	0.04	0.02	0.03	0.04	0.03	0.03	0.04	0.03	0.04	0.06	0.04	0.05
11-Jun	2.16	1.66	2.01	0.82	0.65	0.72	0.06	0.03	0.03	1.02	0.02	0.03	0.04	0.03	0.03	0.04	0.03	0.03	0.07	0.04	0.05
12-Jun	2.14	1.80	1.95	0.80	0.67	0.72	0.10	0.03	0.03	0.05	0.02	0.03	0.62	0.03	0.04	0.04	0.03	0.03	0.05	0.04	0.05
13-Jun	2.23	1.83	1.94	0.72	0.62	0.66	0.05	0.03	0.03	0.05	0.03	0.03	0.04	0.03	0.04	0.71	0.03	0.04	0.06	0.05	0.05
14-Jun	2.12	1.84	1.97	0.76	0.65	0.68	0.09	0.03	0.03	0.04	0.03	0.03	0.78	0.03	0.04	0.05	0.04	0.04	0.37	0.05	0.05
15-Jun	2.08	1.78	1.88	0.80	0.64	0.73	0.59	0.03	0.03	0.04	0.02	0.03	0.04	0.03	0.04	0.05	0.03	0.04	0.06	0.05	0.05
16-Jun	2.17	1.71	1.90	0.82	0.61	0.71	0.06	0.03	0.03	0.98	0.02	0.03	0.04	0.03	0.03	0.04	0.03	0.04	0.06	0.05	0.05
17-Jun	2.09	1.86	2.00	0.76	0.20	0.63	0.07	0.03	0.03	0.25	0.03	0.03	0.65	0.03	0.04	0.05	0.03	0.04	0.06	0.05	0.05
18-Jun	2.23	1.82	1.95	0.73	0.63	0.68	0.08	0.03	0.03	0.12	0.03	0.03	0.05	0.04	0.04	0.78	0.03	0.04	0.06	0.05	0.06
19-Jun	2.05	1.78	1.96	0.72	0.63	0.67	0.06	0.03	0.04	0.05	0.03	0.03	0.05	0.04	0.04	0.05	0.04	0.05	0.45	0.05	0.06
20-Jun	2.21	1.83	1.93	0.73	0.58	0.66	0.51	0.03	0.04	0.07	0.03	0.03	0.05	0.04	0.04	0.05	0.04	0.05	0.07	0.06	0.07
21-Jun	2.00	1.70	1.84	0.85	0.60	0.70	0.10	0.04	0.04	0.99	0.03	0.04	0.05	0.04	0.04	0.05	0.04	0.04	0.07	0.06	0.06
22-Jun	1.95	1.73	1.87	0.78	0.66	0.71	0.08	0.03	0.04	0.06	0.04	0.04	0.60	0.04	0.04	0.05	0.04	0.04	0.07	0.06	0.06
23-Jun	2.10	1.62	1.83	0.77	0.64	0.71	0.07	0.03	0.04	0.07	0.03	0.04	0.05	0.04	0.04	0.58	0.04	0.04	0.07	0.06	0.06
24-Jun	2.15	1.63	1.92	0.75	0.65	0.70	0.10	0.03	0.03	0.09	0.03	0.03	0.05	0.04	0.04	0.05	0.04	0.04	0.44	0.05	0.06
25-Jun	2.05	1.76	1.93	0.75	0.54	0.68	0.57	0.03	0.03	0.07	0.03	0.03	0.05	0.04	0.04	0.05	0.04	0.04	0.07	0.06	0.06
26-Jun	2.19	1.81	1.97	0.82	0.56	0.68	0.28	0.03	0.03	0.96	0.03	0.04	0.04	0.04	0.04	0.05	0.04	0.04	0.06	0.05	0.06
27-Jun	2.25	0.04	2.02	0.84	0.67	0.77	0.07	0.03	0.03	0.05	0.03	0.03	0.60	0.04	0.04	0.04	0.04	0.04	0.06	0.05	0.06
28-Jun	2.21	1.86	2.02	0.78	0.64	0.71	0.07	0.03	0.03	0.16	0.03	0.03	0.06	0.04	0.04	0.81	0.04	0.04	0.06	0.05	0.05
29-Jun	2.18	1.80	1.94	0.73	0.62	0.67	0.05	0.03	0.03	0.05	0.03	0.03	0.04	0.04	0.04	0.11	0.04	0.04	0.37	0.05	0.05
30-Jun	2.09	1.85	1.96	0.71	0.56	0.65	0.84	0.03	0.03	0.05	0.03	0.03	0.04	0.03	0.04	0.04	0.04	0.04	0.06	0.05	0.06
1-Jul																					
Average	2.15	1.70	1.94	0.88	0.55	0.67	0.19	0.03	0.03	0.23	0.03	0.03	0.16	0.03	0.04	0.18	0.03	0.04	0.14	0.05	0.05



## Monthly Turbidity Reading Summary Vermilion WTP

1-Jul-2024																					
Month Min	1.94	1.55	1.84	0.67	-0.25	0.59	0.05	-0.17	0.03	0.04	-0.18	0.03	0.03	-0.18	0.03	0.03	-0.18	0.02	0.03	-0.18	0.02
Month Max	2.45	1.96	2.09	2.00	0.71	0.77	0.89	0.03	0.04	1.02	0.03	0.04	1.01	0.04	1.02	0.05	1.02	0.05	1.02	0.06	0.07
Date	Chlorine Residual (AI-85)			Fluoride Residual (HFS-Master)			Filter #A Turbidity (AI-98582)			Filter #B Turbidity (AI-98577)			Filter #C Turbidity (AI-98576)			Filter #D Turbidity (AI-98580)			Filter #E Turbidity (AI-98581)		
	Maximum ppm	Minimum ppm	Average ppm	Maximum ppm	Minimum ppm	Average ppm	Maximum NTU	Minimum NTU	Average NTU	Maximum NTU	Minimum NTU	Average NTU	Maximum NTU	Minimum NTU	Average NTU	Maximum NTU	Minimum NTU	Average NTU	Maximum NTU	Minimum NTU	Average NTU
1-Jul	2.09	1.73	1.96	0.74	0.48	0.62	0.11	0.03	0.03	0.99	0.03	0.04	0.04	0.03	0.04	0.05	0.04	0.04	0.06	0.05	0.06
2-Jul	2.14	1.76	1.90	0.77	0.58	0.66	0.06	0.03	0.03	0.04	0.03	0.03	0.52	0.04	0.04	0.05	0.04	0.04	0.06	0.05	0.06
3-Jul	1.94	1.72	1.84	1.76	-0.08	0.59	0.13	0.03	0.03	0.07	0.03	0.03	0.04	0.04	0.04	0.62	0.04	0.04	0.06	0.05	0.05
4-Jul	2.10	1.74	1.88	2.00	-0.25	0.67	0.06	0.03	0.03	0.05	0.03	0.03	0.04	0.04	0.04	0.05	0.04	0.04	0.40	0.05	0.06
5-Jul	2.10	1.75	1.90	0.86	0.62	0.77	0.51	0.03	0.03	0.04	0.03	0.03	0.04	0.04	0.04	0.08	0.04	0.04	0.08	0.06	0.06
6-Jul	2.12	1.87	1.97	0.87	0.62	0.75	0.06	0.03	0.03	1.01	0.03	0.03	0.05	0.03	0.04	0.05	0.04	0.04	0.08	0.05	0.06
7-Jul	2.09	1.73	1.90	0.83	0.67	0.75	0.06	0.03	0.03	0.04	0.03	0.03	0.54	0.03	0.04	0.04	0.03	0.04	0.06	0.05	0.06
8-Jul	2.33	1.71	1.90	1.14	0.71	0.77	0.06	0.03	0.03	0.04	0.03	0.03	0.05	0.04	0.04	0.60	0.04	0.04	0.06	0.05	0.06
9-Jul	2.30	1.96	2.08	0.80	0.63	0.70	0.10	0.03	0.03	0.06	0.03	0.03	0.05	0.04	0.04	0.05	0.04	0.04	1.02	0.05	0.06
10-Jul	2.14	1.58	2.04	0.77	0.61	0.71	0.65	0.03	0.03	0.07	0.03	0.03	0.05	0.04	0.04	0.05	0.04	0.04	0.07	0.06	0.06
11-Jul	2.29	1.55	2.01	1.09	0.54	0.67	0.10	0.03	0.03	1.01	0.03	0.04	0.09	0.04	0.04	0.08	0.04	0.04	0.18	0.06	0.06
12-Jul	2.19	1.93	2.07	0.67	0.55	0.59	0.12	0.03	0.03	0.05	0.03	0.03	0.55	0.04	0.04	0.05	0.04	0.04	0.07	0.06	0.06
13-Jul	2.29	1.92	2.05	0.77	0.59	0.67	0.06	0.03	0.03	0.05	0.03	0.03	0.05	0.04	0.04	0.67	0.04	0.05	0.07	0.06	0.06
14-Jul	2.36	1.88	2.05	0.81	0.66	0.72	0.09	0.03	0.03	0.05	0.03	0.03	0.05	0.04	0.04	0.05	0.04	0.05	0.54	0.06	0.06
15-Jul	2.37	1.93	2.09	0.79	0.56	0.71	0.64	0.03	0.03	0.04	0.03	0.03	0.05	0.04	0.04	0.08	0.04	0.05	0.07	0.06	0.07
16-Jul	2.21	1.85	2.03	0.78	0.50	0.63	0.27	0.03	0.04	0.93	0.03	0.04	0.05	0.04	0.04	0.05	0.04	0.05	0.07	0.06	0.07
17-Jul	2.19	1.89	2.00	0.72	0.58	0.63	0.08	0.03	0.03	0.07	0.03	0.03	0.67	0.04	0.04	0.05	0.04	0.04	0.07	0.06	0.06
18-Jul	2.27	1.84	2.00	0.78	0.62	0.68	0.12	0.03	0.03	0.04	0.03	0.03	0.05	0.04	0.04	0.68	0.04	0.04	0.07	0.06	0.06
19-Jul	2.20	1.70	1.95	0.86	0.67	0.74	0.07	0.03	0.03	0.07	0.03	0.03	0.05	0.04	0.04	0.05	0.04	0.04	0.93	0.06	0.06
20-Jul	2.02	1.73	1.93	0.76	0.51	0.65	0.66	0.03	0.03	0.05	0.03	0.03	0.05	0.04	0.04	0.05	0.04	0.04	0.07	0.06	0.06
21-Jul	2.11	1.78	1.94	0.80	0.51	0.64	0.08	0.03	0.03	1.00	0.03	0.04	0.05	0.04	0.04	0.05	0.04	0.04	0.07	0.06	0.06
22-Jul	2.11	1.79	1.92	0.74	0.59	0.67	0.13	0.03	0.03	0.04	0.03	0.03	0.55	0.04	0.04	0.05	0.04	0.04	0.07	0.06	0.06
23-Jul	2.12	1.76	1.91	0.74	0.62	0.68	0.11	0.03	0.03	0.04	0.03	0.03	0.04	0.04	0.04	0.84	0.04	0.04	0.07	0.06	0.06
24-Jul	2.21	1.74	1.94	0.79	0.60	0.69	0.89	0.00	0.03	1.02	0.01	0.03	1.01	0.02	0.03	1.02	0.02	0.03	1.02	0.02	0.05
25-Jul	2.16	1.82	1.95	0.80	0.62	0.72	0.71	-0.17	0.03	0.05	-0.18	0.03	0.03	-0.18	0.03	0.03	-0.18	0.02	0.06	-0.18	0.02
26-Jul	2.11	1.79	1.94	0.81	0.48	0.69	0.06	0.03	0.03	0.97	0.02	0.03	0.03	0.02	0.03	0.03	0.02	0.02	0.03	0.02	0.02
27-Jul	2.24	1.88	1.96	0.76	0.59	0.65	0.05	0.03	0.03	0.04	0.03	0.03	0.61	0.02	0.03	0.03	0.02	0.02	0.03	0.02	0.02
28-Jul	2.38	1.78	2.01	0.83	0.62	0.68	0.05	0.03	0.03	0.04	0.02	0.03	0.03	0.02	0.03	0.63	0.02	0.02	0.04	0.02	0.02
29-Jul	2.45	1.80	2.07	0.82	0.66	0.71	0.07	0.03	0.03	0.05	0.02	0.03	0.03	0.02	0.03	0.03	0.02	0.02	0.44	0.02	0.03
30-Jul	2.38	1.78	2.01	0.93	0.63	0.73	0.61	0.03	0.03	0.04	0.02	0.03	0.04	0.02	0.03	0.03	0.02	0.02	0.04	0.02	0.03
31-Jul	2.34	1.88	2.07	0.88	0.55	0.74	0.12	0.03	0.03	0.99	0.02	0.03	0.03	0.02	0.03	0.03	0.02	0.02	0.05	0.02	0.03
1-Aug																					
Average	2.20	1.79	1.98	0.89	0.54	0.69	0.22	0.02	0.03	0.29	0.02	0.03	0.18	0.03	0.04	0.20	0.03	0.04	0.19	0.04	0.05



## Monthly Turbidity Reading Summary Vermilion WTP

1-Aug-2024																						
Month Min	2.40	0.04	2.20	0.70	0.20	0.56	0.04	0.02	0.03	0.03	0.00	0.02	0.03	0.00	0.02	0.02	0.00	0.02	0.03	0.01	0.03	
Month Max	2.72	2.24	2.41	0.93	0.71	0.79	0.97	0.04	0.04	1.02	0.03	0.04	1.02	0.03	0.03	1.01	0.02	0.03	1.02	0.03	0.04	
Date	Chlorine Residual (AI-85)			Fluoride Residual (HFS-Master)			Filter #A Turbidity (AI-98582)			Filter #B Turbidity (AI-98577)			Filter #C Turbidity (AI-98576)			Filter #D Turbidity (AI-98580)			Filter #E Turbidity (AI-98581)			
	Maximum ppm	Minimum ppm	Average ppm	Maximum ppm	Minimum ppm	Average ppm	Maximum NTU	Minimum NTU	Average NTU	Maximum NTU	Minimum NTU	Average NTU	Maximum NTU	Minimum NTU	Average NTU	Maximum NTU	Minimum NTU	Average NTU	Maximum NTU	Minimum NTU	Average NTU	
1-Aug	2.55	2.14	2.28	0.87	0.67	0.76	0.06	0.03	0.03	0.05	0.03	0.03	0.66	0.02	0.03	0.03	0.02	0.02	0.04	0.02	0.03	
2-Aug	2.46	2.00	2.24	0.82	0.57	0.68	0.06	0.03	0.03	0.05	0.03	0.03	0.03	0.03	0.03	1.01	0.02	0.03	0.04	0.03	0.03	
3-Aug	2.45	2.08	2.21	0.70	0.56	0.62	0.07	0.03	0.03	0.04	0.02	0.03	0.04	0.03	0.03	0.03	0.02	0.03	0.48	0.03	0.03	
4-Aug	2.43	2.08	2.20	0.78	0.53	0.64	0.72	0.03	0.03	0.04	0.02	0.03	0.04	0.03	0.03	0.03	0.02	0.03	0.04	0.03	0.03	
5-Aug	2.40	2.10	2.29	0.79	0.49	0.70	0.09	0.03	0.03	0.92	0.02	0.03	0.03	0.03	0.03	0.03	0.02	0.02	0.04	0.03	0.03	
6-Aug	2.50	2.07	2.28	0.90	0.20	0.56	0.07	0.03	0.03	0.04	0.03	0.03	0.62	0.02	0.03	0.03	0.02	0.02	0.04	0.03	0.03	
7-Aug	2.43	1.98	2.23	0.82	0.54	0.66	0.28	0.03	0.03	0.05	0.02	0.03	0.04	0.03	0.03	0.80	0.02	0.02	0.04	0.03	0.03	
8-Aug	2.72	1.97	2.28	0.79	0.63	0.71	0.07	0.03	0.03	0.05	0.02	0.03	0.04	0.03	0.03	0.03	0.02	0.02	1.02	0.03	0.04	
9-Aug	2.63	2.12	2.29	0.81	0.56	0.70	0.75	0.03	0.03	0.04	0.02	0.03	0.04	0.03	0.03	0.03	0.02	0.02	0.04	0.03	0.03	
10-Aug	2.57	2.21	2.33	0.73	0.47	0.63	0.04	0.03	0.03	1.01	0.02	0.03	0.03	0.02	0.03	0.03	0.02	0.02	0.06	0.03	0.03	
11-Aug	2.56	2.08	2.34	0.79	0.61	0.70	0.05	0.03	0.03	0.07	0.02	0.03	0.66	0.02	0.03	0.03	0.02	0.02	0.04	0.03	0.03	
12-Aug	2.58	2.19	2.34	0.77	0.66	0.72	0.07	0.03	0.03	0.05	0.02	0.03	0.03	0.03	0.03	0.57	0.02	0.03	0.03	0.03	0.03	
13-Aug	2.52	2.24	2.37	0.79	0.62	0.72	0.08	0.03	0.03	0.04	0.02	0.02	0.03	0.02	0.03	0.04	0.02	0.02	0.52	0.03	0.03	
14-Aug	2.59	2.23	2.41	0.84	0.61	0.70	0.78	0.02	0.03	0.04	0.02	0.02	0.03	0.02	0.03	0.03	0.02	0.02	0.04	0.03	0.03	
15-Aug	2.51	2.07	2.37	0.89	0.61	0.73	0.05	0.03	0.03	0.94	0.02	0.03	0.04	0.02	0.02	0.02	0.02	0.04	0.03	0.03	0.03	
16-Aug	2.51	2.02	2.29	0.83	0.65	0.74	0.19	0.03	0.03	0.05	0.02	0.03	0.51	0.02	0.03	0.03	0.01	0.02	0.03	0.03	0.03	
17-Aug	2.55	2.11	2.30	0.77	0.65	0.70	0.13	0.03	0.03	0.03	0.02	0.03	0.03	0.03	0.03	0.77	0.01	0.02	0.03	0.03	0.03	
18-Aug	2.56	2.16	2.30	0.82	0.65	0.73	0.05	0.02	0.03	0.04	0.02	0.02	0.03	0.02	0.03	0.03	0.02	0.02	0.48	0.02	0.03	
19-Aug	2.41	2.18	2.31	0.87	0.61	0.77	0.70	0.02	0.03	0.05	0.02	0.02	0.03	0.02	0.02	0.02	0.01	0.02	0.03	0.02	0.03	
20-Aug	2.45	2.06	2.29	0.93	0.65	0.79	0.06	0.02	0.03	0.85	0.02	0.03	0.03	0.02	0.02	0.02	0.02	0.01	0.02	0.03	0.02	0.03
21-Aug	2.40	2.08	2.26	0.84	0.71	0.78	0.05	0.02	0.03	0.10	0.02	0.03	0.58	0.02	0.03	0.02	0.01	0.02	0.03	0.02	0.03	
22-Aug	2.62	2.09	2.32	0.82	0.70	0.76	0.06	0.03	0.03	0.06	0.03	0.03	0.03	0.03	0.03	0.71	0.01	0.02	0.03	0.02	0.03	
23-Aug	2.58	2.09	2.30	0.84	0.70	0.76	0.08	0.03	0.03	0.04	0.02	0.03	0.03	0.03	0.03	0.02	0.02	0.02	0.49	0.02	0.03	
24-Aug	2.43	2.14	2.31	0.84	0.63	0.75	0.97	0.03	0.03	0.04	0.02	0.03	0.03	0.02	0.03	0.02	0.02	0.04	0.03	0.03	0.03	
25-Aug	2.52	2.10	2.33	0.74	0.45	0.66	0.05	0.03	0.03	0.91	0.02	0.03	0.03	0.02	0.03	0.03	0.01	0.02	0.04	0.03	0.03	
26-Aug	2.69	0.04	2.32	0.73	0.40	0.60	0.88	0.03	0.04	0.05	0.03	0.03	1.02	0.00	0.03	1.01	0.00	0.02	0.82	0.01	0.03	
27-Aug	2.47	2.05	2.21	0.88	0.58	0.69	0.07	0.03	0.03	0.05	0.03	0.03	0.03	0.03	0.03	0.75	0.02	0.03	0.03	0.02	0.03	
28-Aug	2.53	2.11	2.26	0.83	0.56	0.73	0.05	0.03	0.03	0.04	0.02	0.03	0.03	0.02	0.03	0.03	0.02	0.02	0.99	0.02	0.03	
29-Aug	2.43	1.96	2.24	0.76	0.53	0.64	0.82	0.03	0.04	0.93	0.00	0.03	0.03	0.03	0.03	0.03	0.02	0.02	0.04	0.03	0.03	
30-Aug	2.56	2.23	2.33	0.82	0.53	0.66	0.08	0.04	0.04	1.02	0.03	0.04	0.03	0.03	0.03	0.04	0.02	0.03	0.04	0.03	0.03	
31-Aug	2.60	2.23	2.37	0.75	0.57	0.70	0.06	0.03	0.04	0.05	0.03	0.04	0.64	0.03	0.03	0.03	0.02	0.02	0.03	0.03	0.03	
1-Sep																						
Average	2.52	2.04	2.30	0.81	0.58	0.70	0.24	0.03	0.03	0.25	0.02	0.03	0.18	0.02	0.03	0.20	0.02	0.02	0.18	0.03	0.03	



## Monthly Turbidity Reading Summary Vermilion WTP

1-Sep-2024																					
Month Min	2.17	0.04	2.05	0.69	0.20	0.42	0.05	0.00	0.03	0.04	0.00	0.03	0.03	0.00	0.02	0.02	0.00	0.02	0.03	0.00	0.02
Month Max	2.68	2.20	2.35	0.97	0.69	0.79	1.00	0.03	0.04	1.02	0.03	0.04	1.02	0.03	0.03	1.02	0.02	0.03	1.02	0.03	0.03
Date	Chlorine Residual (AI-85)			Fluoride Residual (HFS-Master)			Filter #A Turbidity (AI-98582)			Filter #B Turbidity (AI-98577)			Filter #C Turbidity (AI-98576)			Filter #D Turbidity (AI-98580)			Filter #E Turbidity (AI-98581)		
	Maximum ppm	Minimum ppm	Average ppm	Maximum ppm	Minimum ppm	Average ppm	Maximum NTU	Minimum NTU	Average NTU	Maximum NTU	Minimum NTU	Average NTU	Maximum NTU	Minimum NTU	Average NTU	Maximum NTU	Minimum NTU	Average NTU	Maximum NTU	Minimum NTU	Average NTU
1-Sep	2.49	2.20	2.35	0.75	0.57	0.69	0.06	0.03	0.04	0.05	0.03	0.04	0.03	0.03	0.03	0.78	0.02	0.03	0.03	0.02	0.03
2-Sep	2.62	2.15	2.32	0.77	0.62	0.70	0.07	0.03	0.03	0.06	0.03	0.03	0.04	0.03	0.03	0.03	0.02	0.02	0.49	0.02	0.03
3-Sep	2.45	2.14	2.26	0.80	0.59	0.69	0.52	0.03	0.04	0.05	0.03	0.03	0.03	0.03	0.03	0.03	0.02	0.02	0.04	0.02	0.03
4-Sep	2.49	1.97	2.23	0.97	0.46	0.68	0.07	0.03	0.04	1.02	0.03	0.04	0.07	0.03	0.03	0.05	0.02	0.02	0.06	0.02	0.03
5-Sep	2.29	2.05	2.18	0.73	0.55	0.63	0.06	0.03	0.04	0.07	0.03	0.03	0.46	0.02	0.03	0.03	0.02	0.02	0.04	0.02	0.03
6-Sep	2.34	1.99	2.18	0.76	0.57	0.67	0.06	0.03	0.03	0.04	0.03	0.03	0.03	0.02	0.03	0.62	0.02	0.02	0.03	0.02	0.03
7-Sep	2.55	2.14	2.28	0.87	0.69	0.78	0.06	0.03	0.03	0.05	0.03	0.03	0.04	0.02	0.03	0.02	0.02	0.02	0.56	0.02	0.02
8-Sep	2.54	2.15	2.31	0.91	0.66	0.76	0.56	0.03	0.03	0.05	0.03	0.03	0.03	0.02	0.02	0.02	0.01	0.02	0.03	0.02	0.02
9-Sep	2.56	2.13	2.33	0.85	0.49	0.66	0.08	0.03	0.03	1.01	0.03	0.04	0.03	0.02	0.02	0.02	0.01	0.02	0.03	0.02	0.02
10-Sep	2.47	2.20	2.31	0.69	0.20	0.42	0.17	0.03	0.03	0.04	0.03	0.03	0.53	0.02	0.03	0.02	0.01	0.02	0.03	0.02	0.02
11-Sep	2.38	2.01	2.21	0.76	0.62	0.70	0.06	0.03	0.03	0.04	0.02	0.03	0.04	0.02	0.02	0.72	0.01	0.02	0.03	0.02	0.02
12-Sep	2.49	1.95	2.19	0.74	0.58	0.68	0.08	0.03	0.03	0.04	0.02	0.03	0.03	0.02	0.02	0.02	0.01	0.02	0.42	0.02	0.02
13-Sep	2.43	2.03	2.19	0.75	0.57	0.68	0.32	0.03	0.03	0.07	0.02	0.03	0.03	0.02	0.02	0.02	0.01	0.02	0.04	0.02	0.02
14-Sep	2.54	2.01	2.28	0.91	0.49	0.68	0.05	0.03	0.03	0.98	0.02	0.03	0.03	0.02	0.02	0.02	0.01	0.02	0.03	0.02	0.02
15-Sep	2.54	2.04	2.35	0.80	0.55	0.69	0.09	0.03	0.03	0.06	0.03	0.03	0.58	0.02	0.03	0.03	0.01	0.02	0.03	0.02	0.02
16-Sep	2.63	2.14	2.30	0.72	0.39	0.60	0.09	0.03	0.03	0.04	0.03	0.03	0.03	0.02	0.03	0.59	0.01	0.02	0.03	0.02	0.02
17-Sep	2.68	2.17	2.31	0.78	0.59	0.66	0.05	0.03	0.03	0.04	0.02	0.03	0.03	0.02	0.03	0.02	0.01	0.02	0.41	0.02	0.03
18-Sep	2.50	2.16	2.31	0.92	0.61	0.73	1.00	0.00	0.04	1.02	0.00	0.03	1.02	0.00	0.03	1.02	0.00	0.02	1.02	0.00	0.03
19-Sep	2.44	2.05	2.26	0.96	0.58	0.76	0.06	0.03	0.04	0.99	0.02	0.03	0.03	0.02	0.03	0.03	0.02	0.02	0.03	0.02	0.02
20-Sep	2.51	2.13	2.24	0.87	0.61	0.69	0.06	0.03	0.03	0.04	0.03	0.03	0.59	0.02	0.03	0.03	0.02	0.02	0.03	0.02	0.02
21-Sep	2.56	1.96	2.21	0.75	0.61	0.69	0.06	0.03	0.03	0.07	0.03	0.03	0.03	0.03	0.03	0.63	0.02	0.03	0.03	0.02	0.02
22-Sep	2.59	2.14	2.29	0.91	0.62	0.75	0.06	0.03	0.03	0.04	0.03	0.03	0.03	0.03	0.03	0.03	0.02	0.02	0.41	0.02	0.02
23-Sep	2.39	1.95	2.19	0.89	0.58	0.78	0.58	0.03	0.03	0.05	0.02	0.03	0.03	0.02	0.03	0.03	0.02	0.02	0.06	0.02	0.03
24-Sep	2.17	1.90	2.05	0.80	0.39	0.67	0.08	0.03	0.03	0.97	0.02	0.03	0.03	0.02	0.02	0.03	0.02	0.02	0.03	0.02	0.02
25-Sep	2.34	1.94	2.07	0.84	0.61	0.67	0.05	0.03	0.03	0.05	0.03	0.03	0.61	0.02	0.03	0.03	0.02	0.02	0.03	0.02	0.02
26-Sep	2.45	1.95	2.14	0.93	0.67	0.79	0.07	0.03	0.03	0.04	0.03	0.03	0.04	0.03	0.03	0.66	0.02	0.03	0.03	0.02	0.02
27-Sep	2.52	0.04	2.23	0.89	0.58	0.75	0.08	0.03	0.03	0.05	0.03	0.03	0.03	0.03	0.03	0.03	0.02	0.03	0.40	0.02	0.03
28-Sep	2.54	2.02	2.24	0.78	0.47	0.63	0.56	0.03	0.04	0.05	0.03	0.03	0.03	0.02	0.03	0.03	0.02	0.02	0.03	0.02	0.03
29-Sep	2.36	1.95	2.17	0.87	0.41	0.63	0.17	0.03	0.04	0.93	0.02	0.03	0.03	0.02	0.03	0.03	0.02	0.02	0.03	0.02	0.02
30-Sep	2.38	2.06	2.24	0.94	0.57	0.78	0.11	0.03	0.03	0.11	0.03	0.03	0.56	0.02	0.03	0.02	0.02	0.02	0.03	0.02	0.02
1-Oct																					
Average	2.48	1.99	2.24	0.83	0.55	0.69	0.18	0.03	0.03	0.27	0.03	0.03	0.17	0.02	0.03	0.19	0.02	0.02	0.15	0.02	0.02



## Monthly Turbidity Reading Summary Vermilion WTP

1-Oct-2024																					
Month Min	2.12	0.00	1.87	0.20	-0.20	0.20	0.05	-0.24	0.03	0.04	-0.24	0.03	0.03	-0.24	0.02	0.02	-0.24	0.01	0.02	-0.24	0.01
Month Max	4.53	2.06	2.33	1.52	0.73	0.82	1.02	0.04	0.05	1.02	0.04	0.08	1.02	0.03	0.10	1.02	0.03	0.04	1.02	0.03	0.05
Date	Chlorine Residual (AI-85)			Fluoride Residual (HFS-Master)			Filter #A Turbidity (AI-98582)			Filter #B Turbidity (AI-98577)			Filter #C Turbidity (AI-98576)			Filter #D Turbidity (AI-98580)			Filter #E Turbidity (AI-98581)		
	Maximum ppm	Minimum ppm	Average ppm	Maximum ppm	Minimum ppm	Average ppm	Maximum NTU	Minimum NTU	Average NTU	Maximum NTU	Minimum NTU	Average NTU	Maximum NTU	Minimum NTU	Average NTU	Maximum NTU	Minimum NTU	Average NTU	Maximum NTU	Minimum NTU	Average NTU
1-Oct	2.64	2.06	2.21	0.77	0.57	0.67	0.05	0.03	0.03	0.09	0.03	0.03	0.03	0.03	0.03	0.55	0.02	0.02	0.03	0.01	0.02
2-Oct	2.40	1.83	2.15	0.85	0.57	0.67	0.13	0.03	0.03	0.05	0.03	0.03	0.03	0.02	0.03	0.03	0.02	0.02	0.51	0.01	0.02
3-Oct	2.31	1.93	2.03	0.81	0.20	0.43	0.65	0.03	0.04	0.05	0.03	0.03	0.03	0.02	0.03	0.03	0.02	0.02	0.05	0.02	0.02
4-Oct	2.33	1.92	2.05	0.20	0.20	0.20	0.07	0.03	0.04	1.02	0.03	0.04	0.03	0.02	0.02	0.03	0.02	0.02	0.03	0.02	0.02
5-Oct	2.29	1.99	2.13	0.20	0.20	0.20	0.07	0.03	0.03	0.04	0.03	0.03	0.58	0.02	0.03	0.02	0.01	0.02	0.02	0.01	0.02
6-Oct	4.53	0.02	2.14	0.50	-0.20	0.25	0.08	-0.24	0.03	0.07	-0.24	0.03	0.04	-0.24	0.03	0.75	-0.24	0.02	0.06	-0.24	0.02
7-Oct	2.34	2.04	2.18	1.19	0.34	0.65	0.08	0.03	0.03	0.06	0.03	0.03	0.03	0.02	0.02	0.02	0.01	0.02	0.37	0.01	0.02
8-Oct	2.30	1.96	2.10	0.82	0.60	0.70	0.05	0.03	0.03	0.05	0.03	0.03	0.05	0.02	0.02	0.02	0.01	0.02	0.04	0.01	0.02
9-Oct	2.41	1.99	2.13	0.83	0.51	0.72	0.62	0.03	0.04	0.98	0.02	0.03	0.03	0.02	0.02	0.02	0.01	0.01	0.02	0.01	0.01
10-Oct	2.29	1.96	2.12	0.81	0.62	0.72	0.09	0.03	0.04	0.05	0.03	0.03	0.49	0.02	0.03	0.02	0.01	0.01	0.42	0.01	0.01
11-Oct	2.23	1.93	2.06	0.70	0.57	0.63	0.06	0.03	0.04	0.09	0.03	0.04	0.03	0.02	0.03	0.64	0.01	0.02	0.02	0.01	0.02
12-Oct	2.25	1.94	2.13	0.73	0.61	0.66	0.06	0.04	0.04	0.06	0.03	0.04	0.04	0.03	0.03	0.03	0.02	0.03	0.37	0.02	0.02
13-Oct	2.24	1.86	2.03	0.86	0.63	0.73	0.57	0.04	0.05	0.05	0.04	0.04	0.03	0.03	0.03	0.05	0.02	0.02	0.04	0.02	0.02
14-Oct	2.27	1.78	2.00	0.90	0.62	0.78	0.08	0.04	0.05	1.02	0.03	0.05	0.03	0.02	0.03	0.03	0.01	0.02	0.04	0.01	0.02
15-Oct	2.12	1.87	2.00	0.92	0.73	0.82	0.16	0.04	0.04	0.11	0.04	0.04	0.72	0.02	0.03	0.02	0.01	0.02	0.02	0.01	0.02
16-Oct	2.29	1.77	1.98	0.99	0.64	0.78	0.12	0.04	0.05	0.06	0.04	0.04	0.04	0.03	0.03	0.72	0.01	0.02	0.02	0.01	0.01
17-Oct	2.33	1.97	2.17	0.86	0.34	0.73	0.07	0.04	0.04	0.05	0.04	0.04	0.04	0.03	0.03	0.03	0.02	0.02	0.36	0.01	0.02
18-Oct	2.24	0.00	1.98	0.80	0.00	0.66	0.58	0.00	0.05	0.09	0.00	0.04	0.07	0.00	0.03	0.05	0.00	0.02	0.05	0.00	0.02
19-Oct	2.14	1.87	1.99	0.75	0.44	0.60	0.07	0.04	0.05	1.02	0.03	0.05	0.03	0.03	0.03	0.03	0.02	0.02	0.02	0.01	0.02
20-Oct	2.17	1.80	1.97	0.83	0.57	0.66	0.09	0.04	0.04	0.06	0.04	0.04	0.74	0.03	0.03	0.03	0.02	0.02	0.02	0.01	0.02
21-Oct	2.16	1.79	1.97	0.87	0.66	0.75	0.13	0.04	0.05	0.07	0.04	0.04	0.04	0.03	0.03	0.69	0.02	0.02	0.03	0.01	0.02
22-Oct	3.44	0.01	1.87	1.52	0.20	0.67	0.17	0.04	0.05	0.11	0.04	0.04	0.07	0.03	0.03	0.04	0.02	0.03	0.25	0.01	0.03
23-Oct	2.17	0.04	2.00	0.79	0.65	0.71	0.16	0.04	0.04	0.05	0.04	0.04	0.04	0.03	0.03	0.03	0.02	0.02	0.47	0.01	0.02
24-Oct	2.20	1.94	2.05	0.96	0.59	0.66	0.07	0.04	0.04	0.06	0.04	0.04	0.04	0.03	0.03	0.03	0.02	0.02	0.03	0.01	0.02
25-Oct	2.25	1.89	1.99	0.83	0.60	0.69	0.85	0.04	0.05	0.06	0.04	0.04	0.04	0.03	0.03	0.03	0.02	0.02	0.03	0.02	0.02
26-Oct	2.33	1.85	2.01	0.90	0.58	0.70	0.09	0.04	0.05	1.02	0.03	0.05	0.03	0.02	0.03	0.02	0.01	0.02	1.02	0.00	0.02
27-Oct	2.40	1.82	2.03	0.79	0.61	0.69	0.07	0.04	0.04	0.07	0.03	0.04	0.80	0.02	0.03	1.02	0.00	0.02	0.03	0.02	0.03
28-Oct	3.14	1.92	2.33	0.97	0.43	0.68	0.07	0.04	0.04	1.02	0.03	0.08	0.05	0.02	0.03	0.57	0.02	0.03	0.20	0.02	0.05
29-Oct	2.16	1.78	1.95	0.91	0.50	0.61	0.07	0.03	0.04	1.02	0.03	0.05	1.02	0.02	0.10	0.59	0.02	0.04	0.43	0.02	0.04
30-Oct	2.18	1.67	1.97	0.68	0.36	0.55	1.02	0.03	0.05	0.06	0.03	0.03	1.02	0.02	0.03	1.01	0.03	0.04	0.04	0.03	0.03
31-Oct	2.14	1.92	2.00	0.90	0.62	0.68	0.10	0.04	0.04	0.04	0.03	0.03	0.03	0.02	0.02	0.03	0.02	0.03	0.03	0.02	0.03
1-Nov																					
Average	2.41	1.65	2.06	0.82	0.47	0.63	0.21	0.03	0.04	0.28	0.02	0.04	0.20	0.01	0.03	0.23	0.01	0.02	0.16	0.01	0.02



## Monthly Turbidity Reading Summary Vermilion WTP

1-Nov-2024																					
Month Min	2.12	0.04	1.94	0.65	-0.04	0.58	0.04	0.02	0.03	0.04	0.02	0.02	0.02	0.00	0.01	0.03	0.00	0.02	0.02	0.00	0.02
Month Max	3.28	2.00	2.14	1.86	0.67	0.75	0.93	0.04	0.05	1.02	0.04	0.05	1.02	0.03	0.04	1.02	0.03	0.04	1.02	0.04	0.04
Date	Chlorine Residual (AI-85)			Fluoride Residual (HFS-Master)			Filter #A Turbidity (AI-98582)			Filter #B Turbidity (AI-98577)			Filter #C Turbidity (AI-98576)			Filter #D Turbidity (AI-98580)			Filter #E Turbidity (AI-98581)		
	Maximum ppm	Minimum ppm	Average ppm	Maximum ppm	Minimum ppm	Average ppm	Maximum NTU	Minimum NTU	Average NTU	Maximum NTU	Minimum NTU	Average NTU	Maximum NTU	Minimum NTU	Average NTU	Maximum NTU	Minimum NTU	Average NTU	Maximum NTU	Minimum NTU	Average NTU
1-Nov	2.16	1.77	2.01	0.87	0.47	0.67	0.06	0.04	0.04	1.02	0.03	0.04	0.03	0.02	0.02	0.03	0.02	0.03	0.03	0.02	0.03
2-Nov	2.34	1.95	2.03	0.81	0.65	0.71	0.06	0.04	0.04	0.05	0.03	0.04	0.02	0.02	0.02	0.03	0.02	0.03	0.58	0.02	0.03
3-Nov	2.16	1.96	2.04	0.79	0.67	0.73	0.05	0.03	0.04	0.05	0.03	0.03	0.02	0.02	0.02	0.03	0.02	0.03	0.04	0.03	0.03
4-Nov	2.16	1.94	2.03	0.82	0.20	0.63	0.06	0.03	0.04	0.04	0.03	0.03	1.01	0.02	0.03	0.03	0.02	0.02	0.03	0.02	0.03
5-Nov	2.16	1.90	2.02	0.73	0.61	0.66	0.10	0.03	0.04	0.04	0.03	0.03	0.03	0.02	0.02	0.83	0.02	0.03	0.03	0.02	0.03
6-Nov	2.25	1.95	2.07	0.80	0.54	0.69	0.48	0.03	0.04	0.04	0.03	0.03	0.03	0.02	0.02	0.03	0.02	0.03	0.36	0.02	0.03
7-Nov	2.28	1.79	2.02	0.77	0.20	0.64	0.06	0.04	0.04	1.02	0.03	0.04	0.02	0.02	0.02	0.03	0.02	0.03	0.03	0.02	0.03
8-Nov	2.25	1.91	2.02	0.68	0.47	0.60	0.11	0.04	0.04	0.05	0.03	0.04	0.85	0.02	0.03	0.03	0.02	0.03	0.03	0.02	0.03
9-Nov	2.34	1.97	2.06	0.80	0.53	0.63	0.07	0.04	0.04	0.06	0.03	0.04	0.03	0.02	0.03	0.90	0.02	0.03	0.03	0.02	0.03
10-Nov	2.25	1.81	2.00	0.78	0.63	0.69	0.27	0.04	0.05	0.10	0.04	0.04	0.04	0.02	0.03	0.05	0.03	0.04	0.40	0.02	0.04
11-Nov	2.32	1.73	2.05	0.85	0.46	0.70	0.77	0.03	0.05	0.07	0.03	0.04	0.04	0.02	0.03	0.05	0.02	0.03	0.05	0.02	0.03
12-Nov	2.44	1.98	2.09	0.96	0.46	0.59	0.09	0.03	0.03	1.02	0.02	0.03	0.02	0.01	0.01	0.03	0.02	0.02	0.02	0.01	0.02
13-Nov	2.22	1.99	2.07	0.79	0.49	0.63	0.07	0.03	0.03	0.06	0.02	0.03	1.02	0.00	0.02	1.02	0.00	0.02	1.02	0.00	0.02
14-Nov	2.19	1.91	2.00	0.78	0.59	0.66	0.05	0.03	0.03	0.04	0.02	0.03	0.98	0.02	0.04	0.95	0.02	0.03	0.05	0.02	0.03
15-Nov	2.12	1.76	1.94	0.75	0.57	0.66	0.12	0.03	0.03	0.06	0.03	0.03	0.04	0.03	0.03	0.04	0.02	0.03	0.41	0.03	0.03
16-Nov	2.30	1.82	2.06	0.80	0.61	0.69	0.51	0.03	0.04	0.04	0.02	0.03	0.03	0.03	0.03	0.03	0.02	0.03	0.04	0.03	0.03
17-Nov	2.32	1.96	2.06	0.85	0.56	0.72	0.09	0.04	0.04	1.02	0.02	0.04	0.03	0.03	0.03	0.03	0.02	0.03	0.04	0.02	0.03
18-Nov	2.21	2.00	2.07	0.81	0.62	0.69	0.05	0.03	0.04	0.09	0.03	0.03	0.97	0.02	0.03	0.03	0.02	0.03	0.04	0.02	0.03
19-Nov	3.28	1.83	2.14	0.87	0.64	0.73	0.06	0.03	0.04	0.04	0.03	0.03	0.04	0.03	0.03	0.97	0.02	0.03	0.03	0.02	0.03
20-Nov	2.13	1.87	1.97	0.86	0.66	0.75	0.07	0.03	0.04	0.04	0.03	0.03	0.04	0.03	0.03	0.04	0.03	0.03	0.39	0.02	0.03
21-Nov	2.48	1.90	2.03	0.82	0.50	0.69	0.55	0.03	0.04	0.04	0.03	0.03	0.03	0.03	0.03	0.03	0.03	0.03	0.06	0.03	0.03
22-Nov	2.50	1.85	2.03	0.93	0.20	0.62	0.10	0.04	0.04	1.02	0.03	0.04	0.05	0.02	0.03	0.03	0.02	0.03	0.04	0.03	0.03
23-Nov	2.36	1.93	2.09	0.65	0.52	0.58	0.05	0.03	0.04	0.04	0.03	0.03	0.92	0.02	0.03	0.03	0.02	0.02	0.03	0.03	0.03
24-Nov	2.36	1.99	2.08	0.72	0.52	0.61	0.09	0.03	0.04	0.04	0.03	0.03	0.03	0.03	0.03	0.96	0.02	0.03	0.04	0.03	0.03
25-Nov	2.43	0.04	2.05	1.86	-0.04	0.63	0.16	0.03	0.04	0.04	0.03	0.03	0.03	0.03	0.03	0.04	0.03	0.03	0.51	0.03	0.04
26-Nov	2.24	1.56	2.01	0.82	0.55	0.67	0.46	0.03	0.04	0.04	0.02	0.02	0.03	0.02	0.03	0.03	0.02	0.03	0.04	0.03	0.04
27-Nov	2.18	1.87	1.97	0.76	0.58	0.68	0.04	0.02	0.03	1.02	0.02	0.03	0.05	0.03	0.04	0.03	0.02	0.03	0.04	0.04	0.04
28-Nov	2.30	1.87	1.97	0.82	0.66	0.72	0.93	0.02	0.03	1.02	0.03	0.05	1.01	0.03	0.04	1.02	0.00	0.03	1.02	0.02	0.03
29-Nov	2.38	1.96	2.05	0.73	0.57	0.63	0.18	0.02	0.03	0.05	0.04	0.05	0.04	0.03	0.04	0.97	0.02	0.03	0.03	0.02	0.02
30-Nov	2.37	1.92	2.03	0.77	0.62	0.67	0.04	0.03	0.03	0.06	0.04	0.04	0.05	0.03	0.04	0.03	0.02	0.02	0.61	0.02	0.03
1-Dec																					
Average	2.32	1.82	2.04	0.83	0.51	0.67	0.19	0.03	0.04	0.28	0.03	0.03	0.25	0.02	0.03	0.28	0.02	0.03	0.20	0.02	0.03



## Monthly Turbidity Reading Summary Vermilion WTP

1-Dec-2024																					
Month Min	2.04	0.04	1.86	0.76	-0.14	0.68	0.03	0.02	0.02	0.03	0.02	0.03	0.02	0.02	0.02	0.02	0.00	0.01	0.02	0.00	0.01
Month Max	2.56	1.96	2.12	1.88	0.71	0.78	0.63	0.03	0.03	1.02	0.04	0.05	1.02	0.03	0.03	1.02	0.03	1.02	0.02	0.03	
Date	Chlorine Residual (AI-85)			Fluoride Residual (HFS-Master)			Filter #A Turbidity (AI-98582)			Filter #B Turbidity (AI-98577)			Filter #C Turbidity (AI-98576)			Filter #D Turbidity (AI-98580)			Filter #E Turbidity (AI-98581)		
	Maximum ppm	Minimum ppm	Average ppm	Maximum ppm	Minimum ppm	Average ppm	Maximum NTU	Minimum NTU	Average NTU	Maximum NTU	Minimum NTU	Average NTU	Maximum NTU	Minimum NTU	Average NTU	Maximum NTU	Minimum NTU	Average NTU	Maximum NTU	Minimum NTU	Average NTU
1-Dec	2.18	1.88	2.00	0.86	0.58	0.70	0.39	0.03	0.03	0.05	0.04	0.04	0.05	0.03	0.03	0.02	0.02	0.02	0.04	0.02	0.02
2-Dec	2.21	1.90	2.01	0.81	0.52	0.71	0.05	0.03	0.03	1.02	0.03	0.05	0.03	0.02	0.03	0.02	0.02	0.02	0.03	0.02	0.02
3-Dec	2.21	1.92	2.06	1.88	-0.14	0.70	0.03	0.03	0.03	0.05	0.04	0.04	0.96	0.02	0.03	0.02	0.02	0.02	0.02	0.02	0.02
4-Dec	2.36	1.96	2.05	0.84	0.63	0.72	0.03	0.02	0.03	0.04	0.03	0.04	0.03	0.03	0.03	0.97	0.01	0.02	0.02	0.01	0.02
5-Dec	2.29	1.88	1.98	0.91	0.67	0.73	0.03	0.02	0.03	0.04	0.03	0.04	0.04	0.02	0.03	0.03	0.02	0.02	0.47	0.02	0.02
6-Dec	2.07	1.79	1.94	0.87	0.60	0.73	0.39	0.02	0.03	0.04	0.03	0.04	0.02	0.02	0.02	0.02	0.01	0.02	0.03	0.02	0.02
7-Dec	2.18	1.86	2.00	0.97	0.57	0.72	0.06	0.03	0.03	1.02	0.03	0.04	0.03	0.02	0.02	0.02	0.01	0.02	0.02	0.01	0.02
8-Dec	2.15	1.86	1.99	0.84	0.56	0.72	0.04	0.02	0.03	0.05	0.04	0.04	0.97	0.02	0.03	0.02	0.01	0.02	0.02	0.01	0.02
9-Dec	2.14	1.91	1.99	0.80	0.68	0.73	0.03	0.02	0.03	0.05	0.04	0.04	0.03	0.02	0.03	1.01	0.01	0.02	0.02	0.01	0.02
10-Dec	2.07	1.79	1.92	0.84	0.71	0.78	0.03	0.02	0.03	0.05	0.04	0.04	0.03	0.02	0.02	0.02	0.01	0.02	0.54	0.01	0.02
11-Dec	2.07	1.81	1.93	0.84	0.55	0.73	0.44	0.02	0.03	0.05	0.04	0.04	0.03	0.02	0.03	0.02	0.01	0.02	0.02	0.01	0.02
12-Dec	2.18	1.84	2.05	0.79	0.55	0.69	0.03	0.02	0.03	1.02	0.04	0.05	0.03	0.02	0.02	0.02	0.01	0.02	0.02	0.01	0.02
13-Dec	2.16	1.94	2.03	0.78	0.67	0.71	0.03	0.02	0.03	0.05	0.04	0.05	1.01	0.02	0.03	0.02	0.01	0.01	0.02	0.01	0.02
14-Dec	2.22	1.94	2.05	0.80	0.63	0.69	0.03	0.02	0.02	0.05	0.03	0.04	0.03	0.03	0.03	0.98	0.01	0.02	0.02	0.01	0.01
15-Dec	2.18	1.95	2.04	0.76	0.66	0.70	0.03	0.02	0.02	0.04	0.03	0.04	0.03	0.02	0.03	0.02	0.01	0.02	0.60	0.01	0.02
16-Dec	2.15	1.88	2.02	0.80	0.57	0.70	0.63	0.02	0.02	0.04	0.03	0.04	0.04	0.02	0.03	0.02	0.01	0.02	0.05	0.01	0.02
17-Dec	2.10	1.78	1.94	0.87	0.62	0.72	0.03	0.02	0.02	1.02	0.03	0.04	0.03	0.02	0.03	0.02	0.01	0.01	0.02	0.01	0.02
18-Dec	2.12	1.75	1.88	0.83	0.71	0.76	0.03	0.02	0.02	0.04	0.02	0.03	1.01	0.02	0.03	1.02	0.00	0.02	1.02	0.00	0.02
19-Dec	2.24	1.77	1.93	0.83	0.67	0.75	0.03	0.02	0.02	0.03	0.02	0.03	0.03	0.02	0.02	1.02	0.01	0.02	0.03	0.02	0.02
20-Dec	2.33	1.95	2.03	0.78	0.58	0.68	0.03	0.02	0.02	0.03	0.02	0.03	0.03	0.02	0.02	0.03	0.02	0.02	0.62	0.02	0.03
21-Dec	2.42	1.94	2.04	0.85	0.61	0.72	0.44	0.02	0.02	0.03	0.02	0.03	0.02	0.02	0.02	0.02	0.02	0.02	0.03	0.02	0.02
22-Dec	2.20	1.87	2.02	0.94	0.56	0.73	0.03	0.02	0.02	1.02	0.02	0.04	0.02	0.02	0.02	0.02	0.02	0.02	0.02	0.02	0.02
23-Dec	2.04	1.72	1.91	0.81	0.59	0.68	0.03	0.02	0.03	0.04	0.03	0.03	0.03	0.02	0.02	0.03	0.02	0.02	0.03	0.02	0.02
24-Dec	2.56	0.04	2.12	0.90	0.63	0.74	0.03	0.02	0.03	0.05	0.03	0.03	1.02	0.02	0.03	1.02	0.02	0.03	0.03	0.02	0.03
25-Dec	2.36	1.75	1.99	0.93	0.69	0.78	0.04	0.02	0.02	0.04	0.03	0.03	0.02	0.02	0.02	0.03	0.02	0.02	0.70	0.02	0.03
26-Dec	2.14	1.62	1.86	0.85	0.61	0.78	0.38	0.02	0.03	0.04	0.03	0.04	0.02	0.02	0.02	0.03	0.01	0.02	0.06	0.02	0.03
27-Dec	2.18	1.80	1.98	0.91	0.61	0.71	0.03	0.02	0.02	0.04	0.03	0.04	0.02	0.02	0.02	0.02	0.01	0.02	0.03	0.02	0.03
28-Dec	2.19	1.74	1.91	0.93	0.50	0.70	0.03	0.02	0.02	1.02	0.03	0.05	0.03	0.02	0.02	0.03	0.02	0.02	0.03	0.02	0.03
29-Dec	2.29	1.80	1.99	0.85	0.65	0.73	0.03	0.02	0.02	0.04	0.03	0.04	1.01	0.02	0.03	1.02	0.02	0.02	0.03	0.02	0.03
30-Dec	2.46	1.86	2.05	1.10	0.64	0.73	0.03	0.02	0.02	0.04	0.03	0.04	0.02	0.02	0.02	0.02	0.02	0.02	0.72	0.02	0.03
31-Dec	2.27	1.83	2.05	0.81	0.61	0.75	0.35	0.02	0.02	0.04	0.03	0.04	0.02	0.02	0.02	0.02	0.02	0.02	0.04	0.02	0.03
1-Jan																					
Average	2.22	1.78	1.99	0.89	0.59	0.72	0.12	0.02	0.03	0.23	0.03	0.04	0.22	0.02	0.03	0.24	0.01	0.02	0.17	0.02	0.02