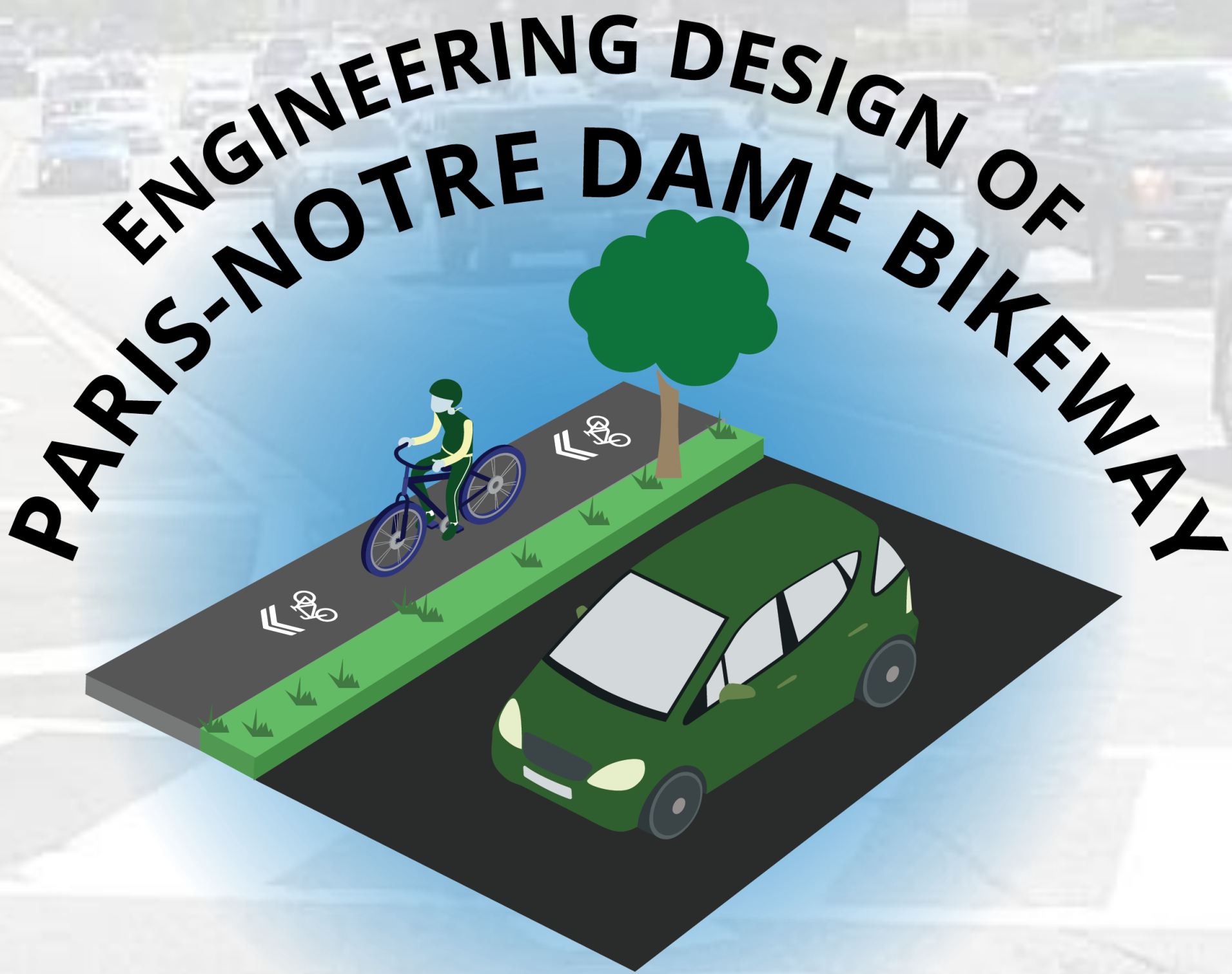
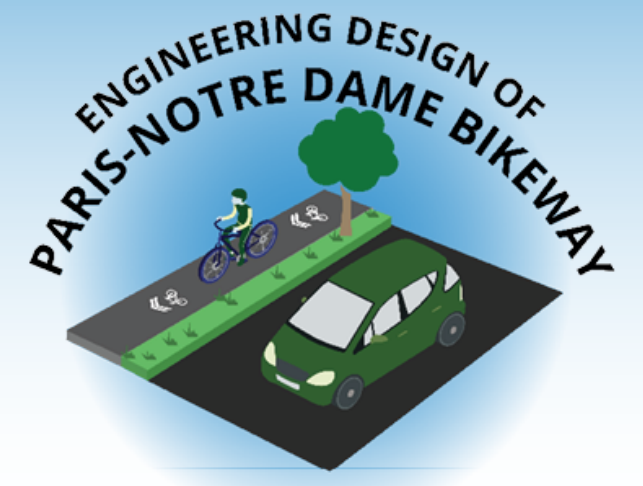


Welcome!

ENGINEERING DESIGN OF THE PARIS-NOTRE DAME BIKEWAY

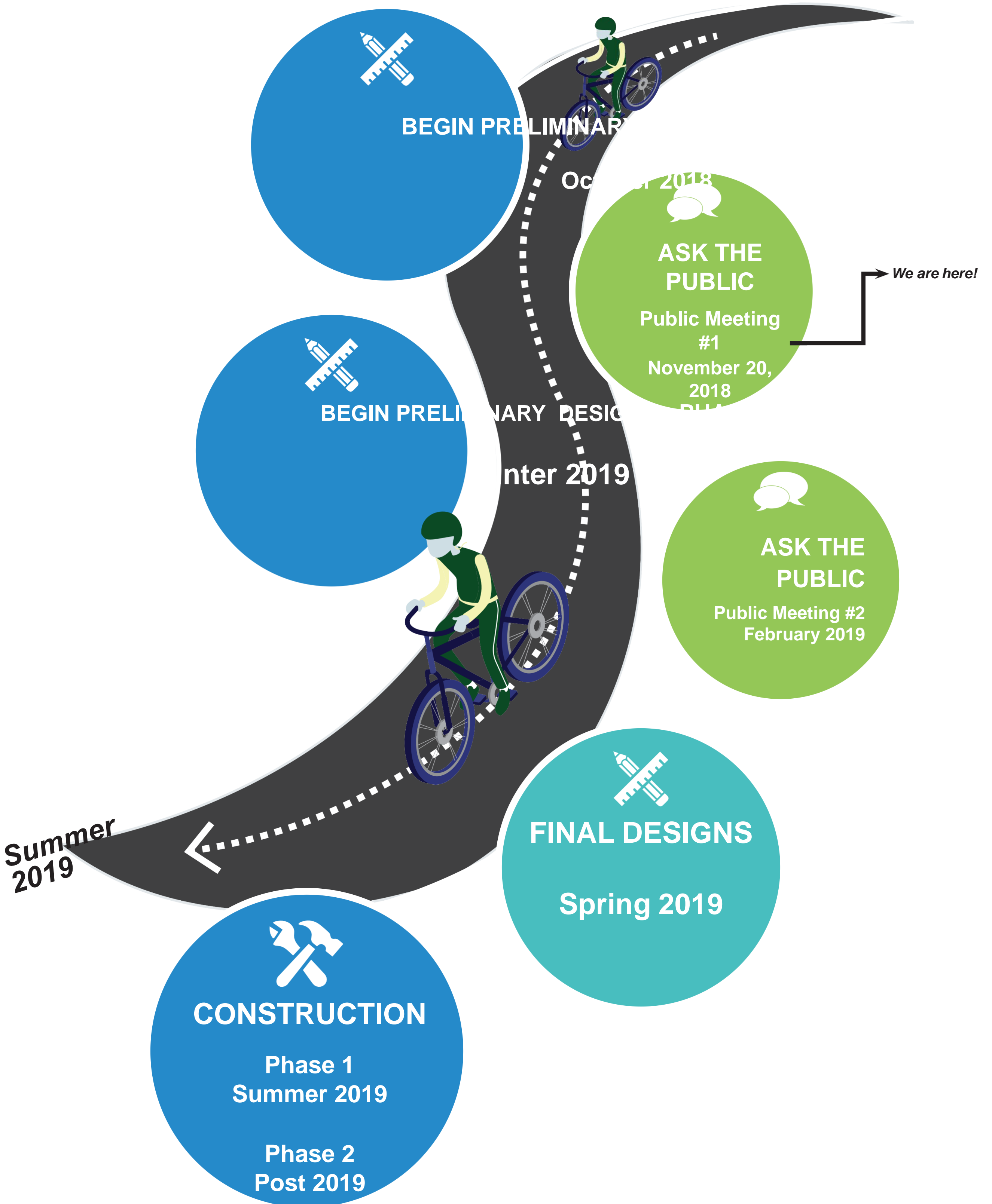
Public Meeting | Tuesday, November 20, 2018





FOLLOW THE STUDY

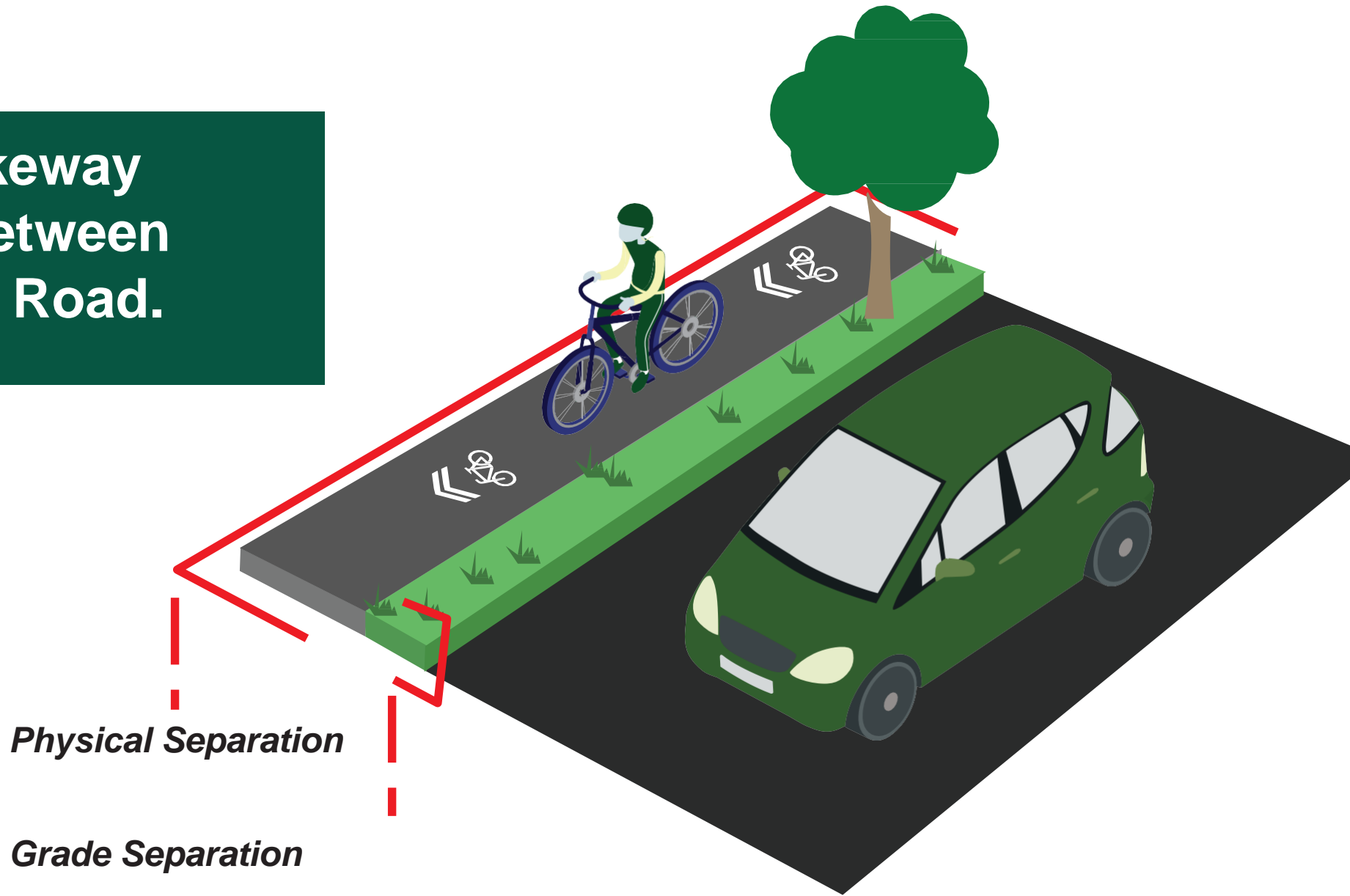
Welcome to the first public meeting for the design of the cycling facilities on Paris Street and Notre Dame Avenue. This initiative is planned to be completed in two phases; the first phase will be constructed in Summer 2019 with the second phase to follow.



WHAT IS A BIKEWAY?

A **Bikeway** is a dedicated path or route for cyclists. It is commonly separated from the vehicular traffic lane through a physical buffer or grade separation.

In Sudbury, 1.5km of bikeway exists on Paris Street between York Street and Walford Road.

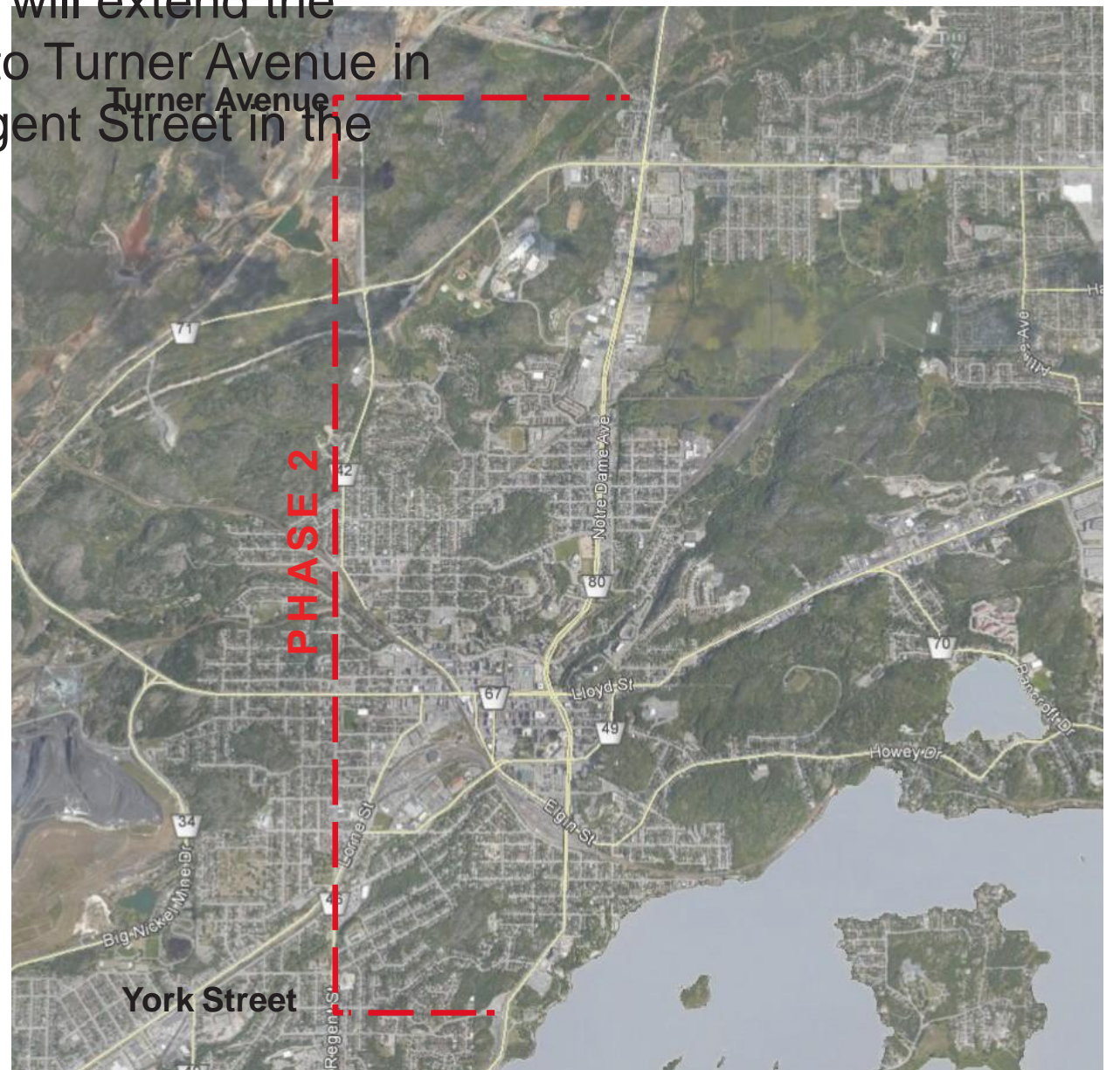


WHERE WILL IT BE?

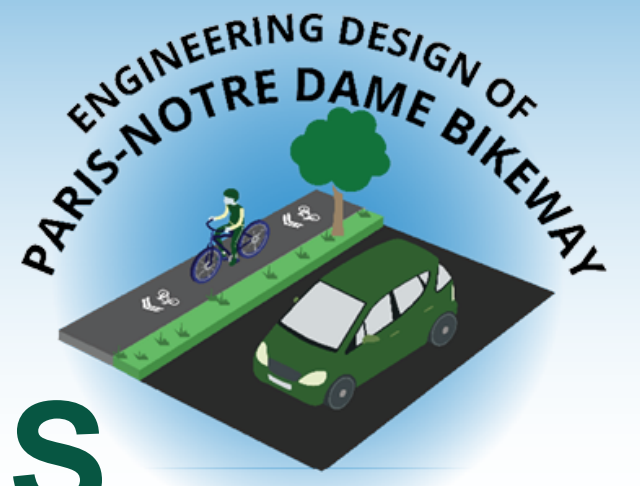
The new bikeway will extend the existing bikeway to Turner Avenue in the north and Regent Street in the south.



PHASE 1



PHASE 2



DESIGN OBJECTIVES

The new bikeway will be guided by the following four design objectives to ensure a safe and comfortable ride for all users.

Separated



1

Continuous



2

Well-Designed



3

Comfortable



4

Separated from vehicle traffic

1

2

Continuous on both sides of the street

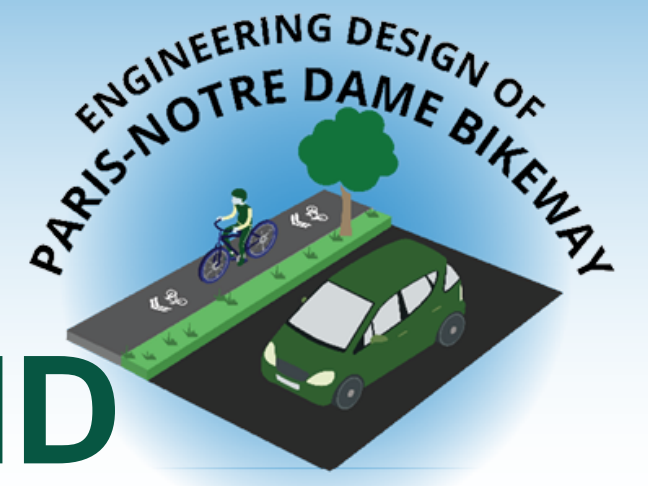
Well designed at intersections

3

4

Comfortable to use





OPPORTUNITIES AND CHALLENGES

In order to achieve a well-used and comfortable cycling facility we have accounted for the following opportunities and challenges.

OPPORTUNITIES



New Intersection Treatments



Transit Integration

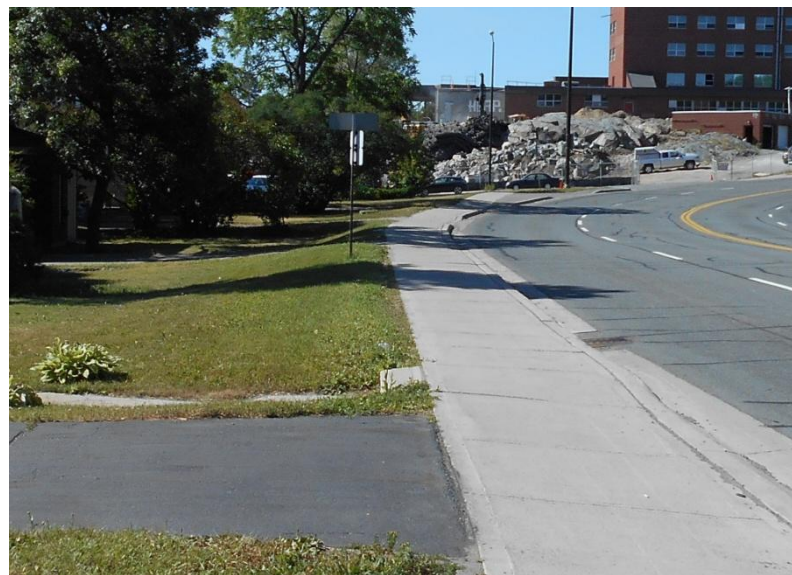


Landscaping/ Beautification

CHALLENGE



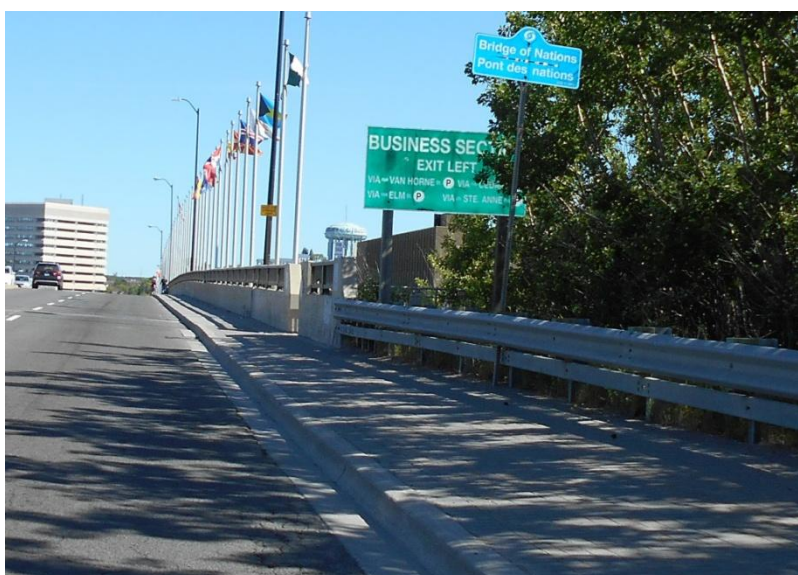
Rock Outcroppings



Constrained Right-of-Way



Existing Utilities



The Bridge of Nations



Retaining Walls/ Grade Changes



Existing Infrastructure

EXAMPLES OF DESIGN

To help you envision the future bikeway, we have gathered three Ontario examples that show different bikeway designs

ALTERNATIVES

In-Boulevard Cycle Tracks

Ottawa



Mountable Curb Cycle Tracks

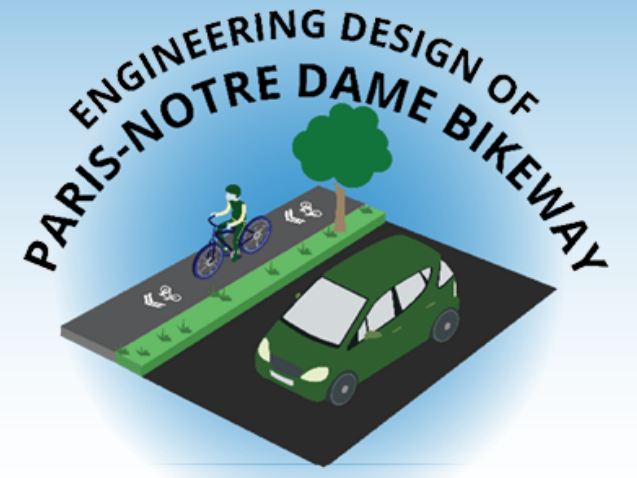


Waterloo

Raised Cycle Tracks



Toronto



WE WANT TO HEAR FROM YOU!

In the boxes below, please let us know what you like or dislike about the different design alternatives.

In-Boulevard Cycle Tracks

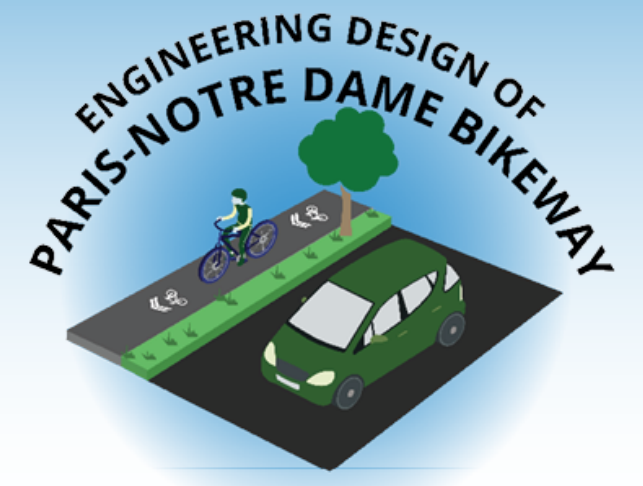


Mountable Curb Cycle Tracks



Raised Cycle Tracks

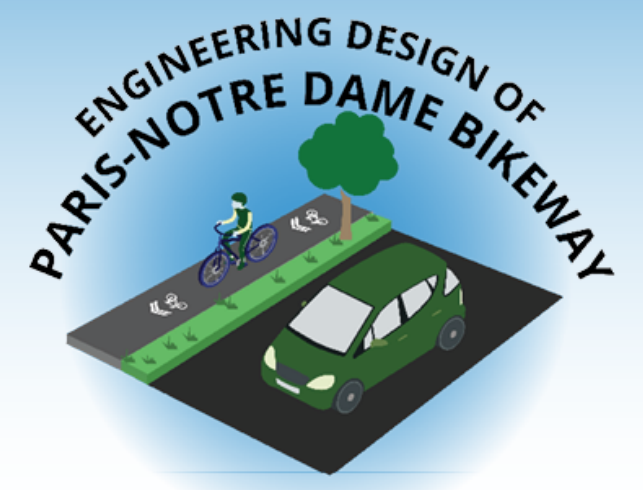




WE WANT TO HEAR FROM YOU!

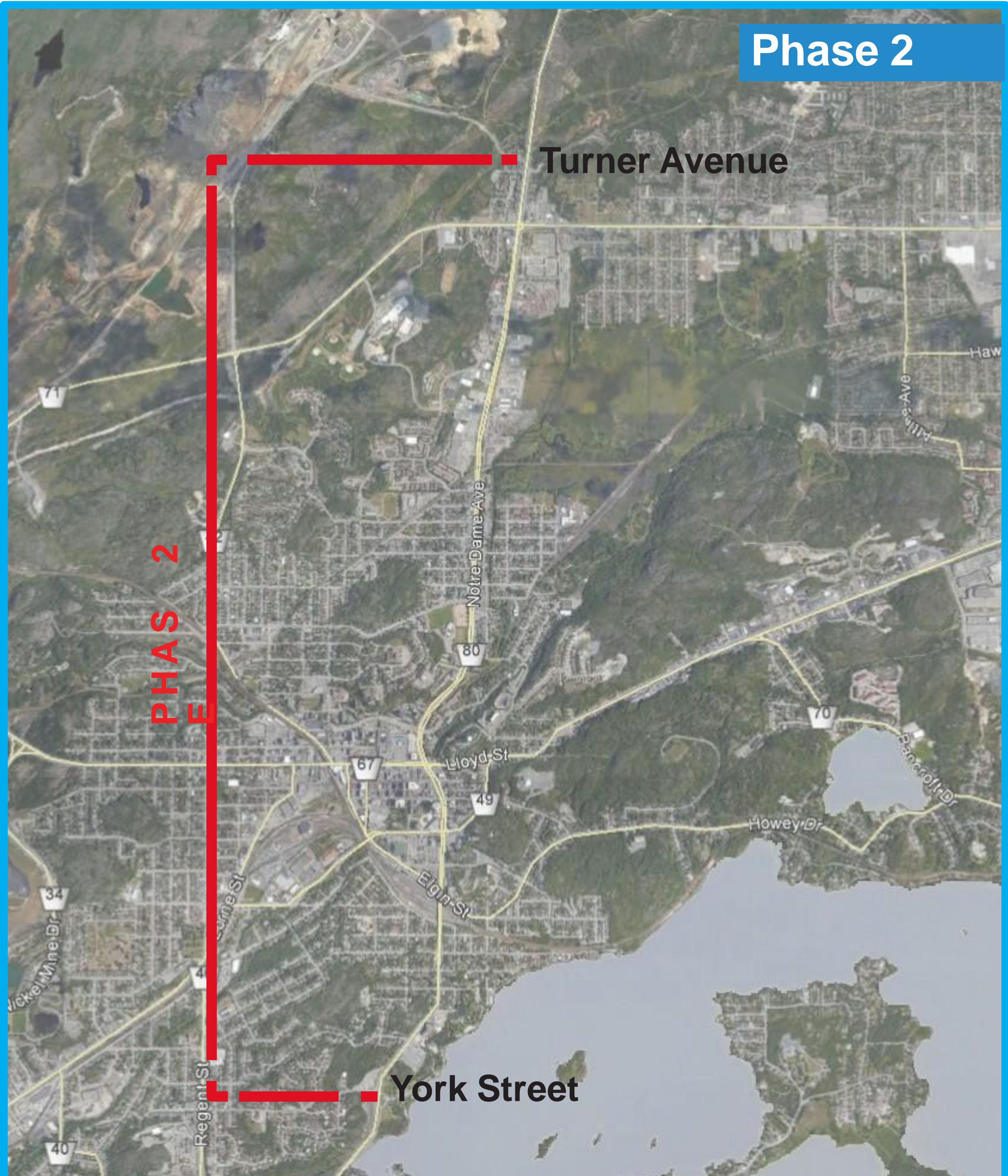
Please identify any additional opportunities or challenges in the study area.





WE WANT TO HEAR FROM YOU!

Please identify any additional opportunities or challenges in the study area.



Phase 2

Turner Avenue

PHAS 2

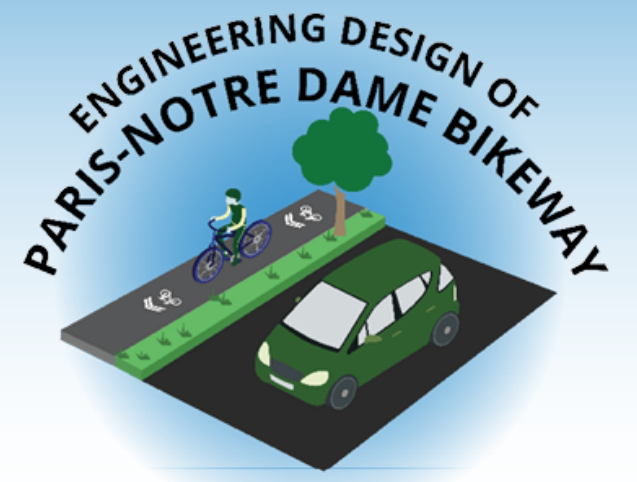
York Street



WE WANT TO HEAR FROM YOU!

Other ideas? Write them here!





NEXT STEPS

Please join us to
discuss updated
design ideas

We will be
meeting again in
February 2019

OR KEEP UPDATED ON OUR STUDY

VIA:

Our website

www.greatersudbury.ca/cycling

Our study contacts

Rebecca Gilchrist, P.Eng
Project Engineer City of Greater
Sudbury

200 Brady Street
P.O. Box 5000, Station 'A'
Sudbury, ON, P3A 5P3 (705) 674-
4455, ext 4218
Rebecca.Gilchrist@greatersudbury.ca

Brett Sears, RPP
Consultation Lead WSP
100 Commerce Valley
Drive West Thornhill, ON
L3T 0A1
(905) 882-4211, ext. 6573
brett.sears@wsp.com