

Project Overview

- This project is funded in part by the Government of Canada through the Disaster Mitigation and Adaptation Fund (DMAF).
- This project includes drainage and infrastructure improvements to Junction Creek from Lloyd Street to approximately 130 north of Perrault Street.
- The City of Greater Sudbury has retained AECOM to complete the design of the improvements and to oversee construction.
- This public information meeting is to update the public on project details, receive comments, and respond to any questions or comments.



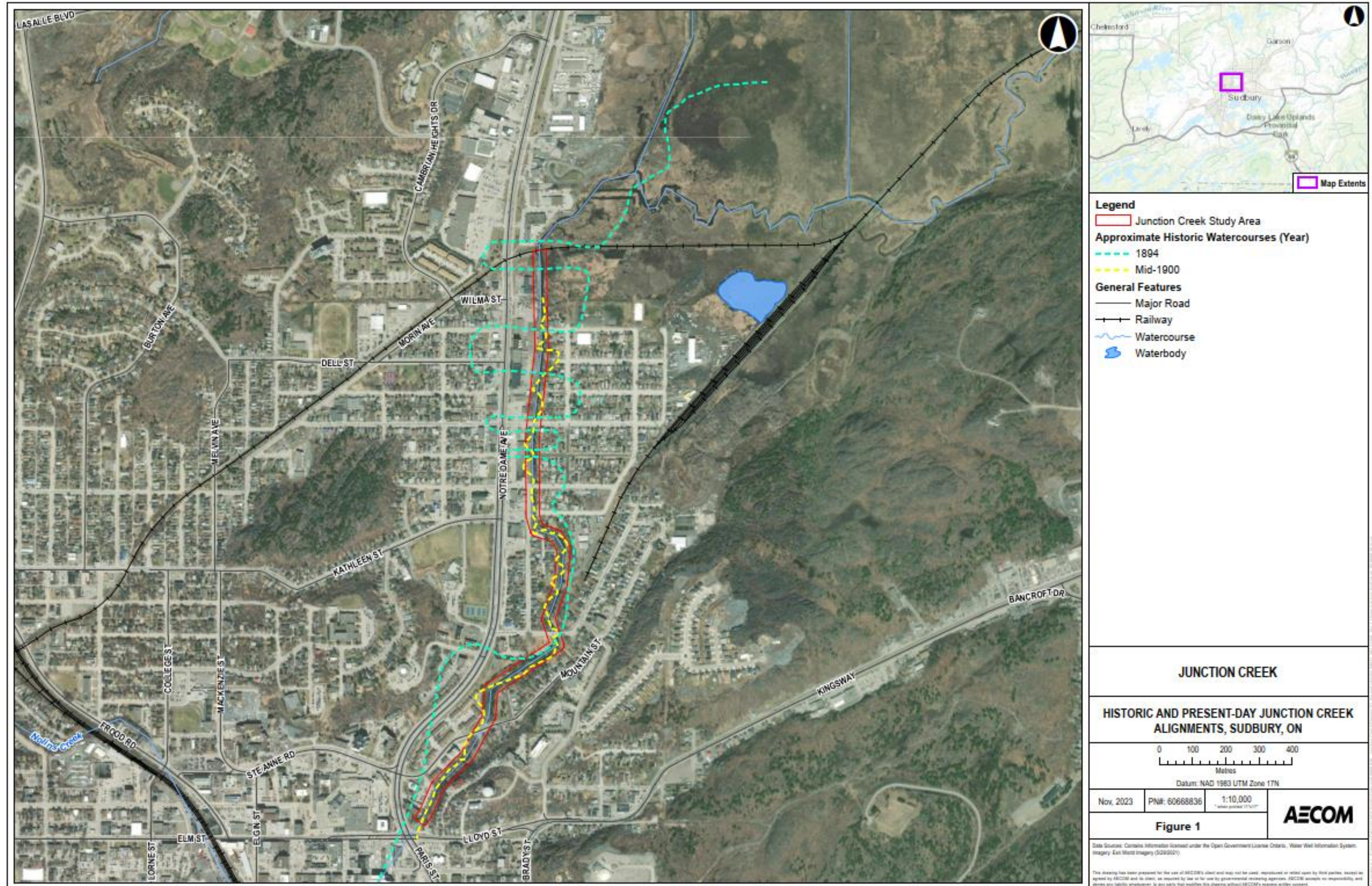
greatersudbury.ca/construction



Greater | Grand
Sudbury



Junction Creek Historical Alignment



1946



46-155
24-60

1964



45 J 2890/64 7630 2

1975

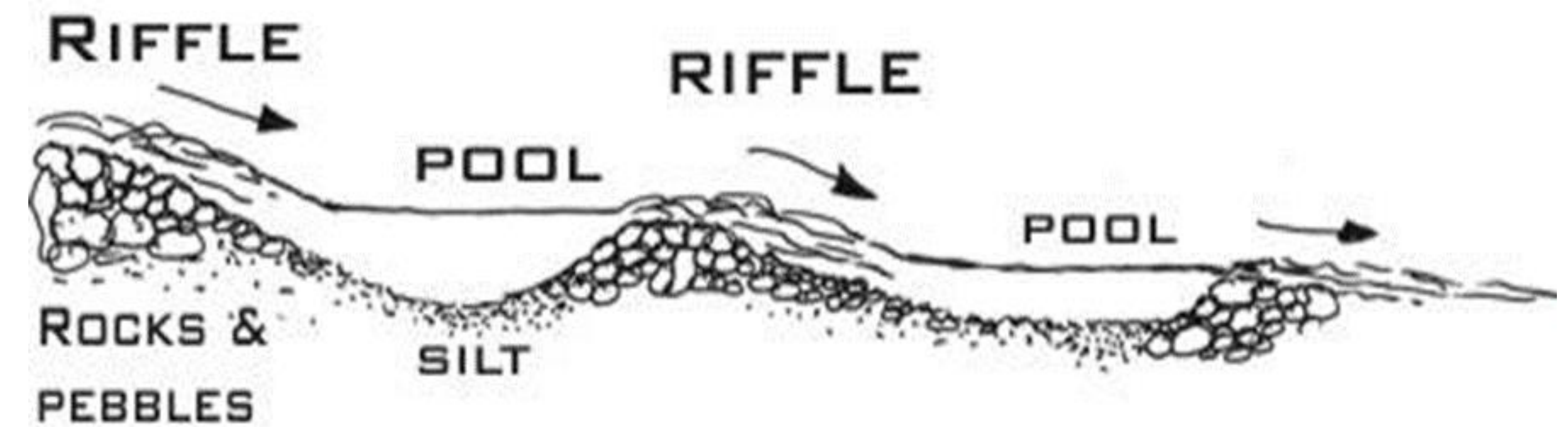


099

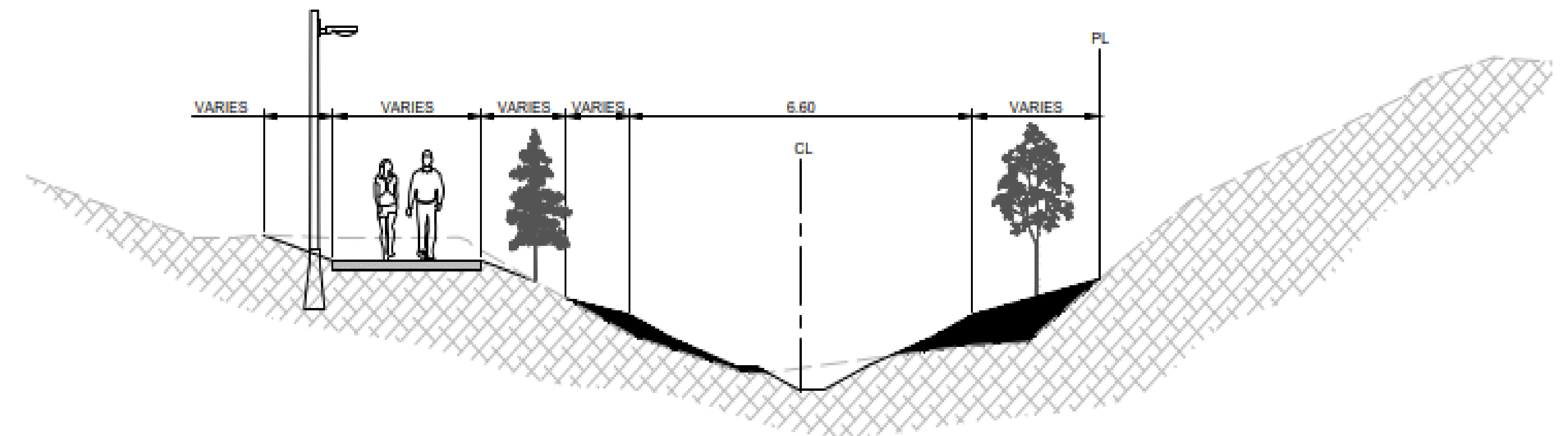
40-90

Planned Improvements

- Reduce frequency of flooding on Notre Dame Avenue, Perreault Street and other streets ensuring existing City storm sewers can outlet into the creek effectively
- Removing the layer of silt and other materials that have built up over time and replace with plants and other materials to improve natural habitat for creek species
- Upgrade adjacent infrastructure to increase resiliency of culverts, storm sewer, retaining walls and fences along the creek
- Improve the aesthetics and accessibility of the Junction Creek Waterway Park trail, where possible



Proposed Creek Bottom Profile



Proposed Typical Cross Section



Environmental Mitigation Measures

- The City and project consultant will work with the successful contractor and regulatory agencies (i.e. Conservation Sudbury, Department of Fisheries and Oceans, etc.), to mitigate any negative environmental impacts to the creek and its species, to the greatest extent possible.
- This may include such things as:
 - Completing project work only during designated bird and fishery timing windows
 - Fish rescue will be completed as part of creek excavation work
 - Turtle exclusion fencing will be installed prior to construction
 - some combination of silt fencing, turbidity curtains, straw bales, and/or erosion control blankets to reduce turbidity to the extent possible



greatersudbury.ca/construction



 Greater | Grand
Sudbury



Project Benefits

- Creek bed sediment that has built up over many years will be excavated to restore the engineered bottom elevation to reduce flood risk and enhance stormwater management.
- Creek banks will be re-graded to improve slope stability and help to reduce the impacts of erosion.
- Invasive plant species will be removed where possible and replaced with plant species native to the area.
- Fish habitat will be enhanced with the introduction of deep pool areas and a new rocky bottom to the creek bed.
- Existing municipal infrastructure for water, sanitary and stormwater services within the construction limits will be relocated or improved to reduce impacts to the creek along with access upgrades for future maintenance.
- The Junction Creek Waterway Park trail will be restored upon completion of construction.



greatersudbury.ca/construction

