



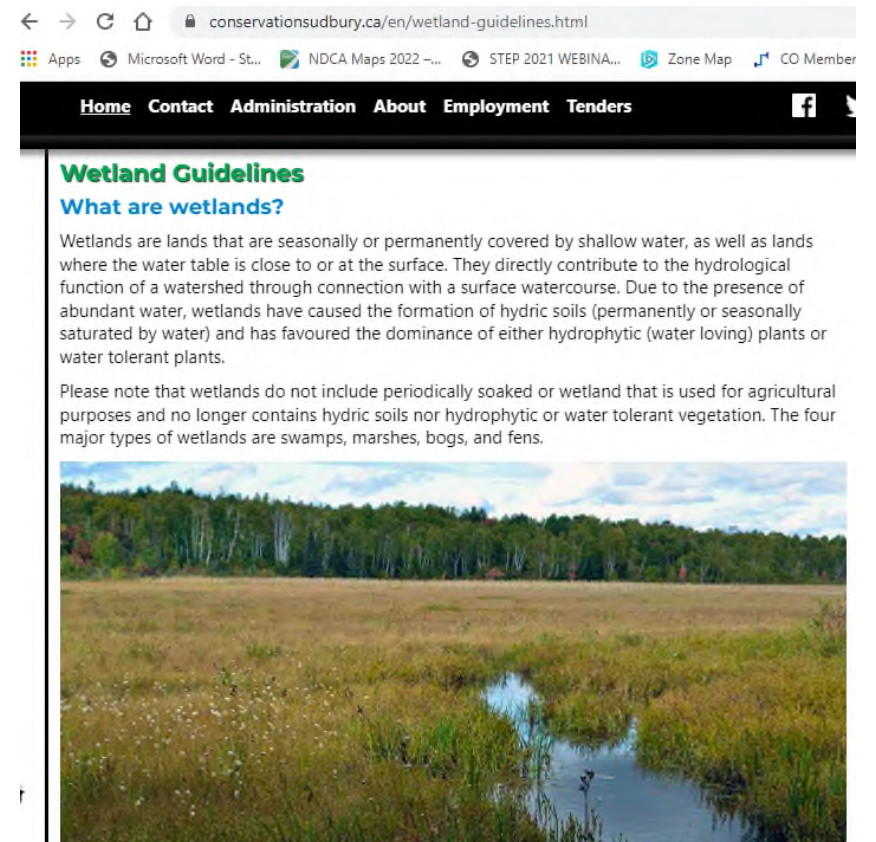
WETLANDS GUIDELINES

MARCH 2022 – CGS CONTRACTORS MEETING



WETLAND GUIDELINES

- As of June, 2021
- Define activities that can occur within and adjacent to wetlands
- See Conservation Sudbury website



conservationsudbury.ca/en/wetland-guidelines.html

Apps Microsoft Word - St... NDCA Maps 2022 -... STEP 2021 WEBINA... Zone Map CO Member


[Home](#) [Contact](#) [Administration](#) [About](#) [Employment](#) [Tenders](#)

Wetland Guidelines

What are wetlands?

Wetlands are lands that are seasonally or permanently covered by shallow water, as well as lands where the water table is close to or at the surface. They directly contribute to the hydrological function of a watershed through connection with a surface watercourse. Due to the presence of abundant water, wetlands have caused the formation of hydric soils (permanently or seasonally saturated by water) and has favoured the dominance of either hydrophytic (water loving) plants or water tolerant plants.

Please note that wetlands do not include periodically soaked or wetland that is used for agricultural purposes and no longer contains hydric soils nor hydrophytic or water tolerant vegetation. The four major types of wetlands are swamps, marshes, bogs, and fens.



REGULATED DEVELOPMENT

- Development within and up to 120 m
 - Placement or removal of fill, site grading
 - Temporary or permanent
 - Any amount (even less than 4")
 - **“Dump sites” for surplus fill material**
 - Structures, change of use of structure



DUMP SITES FOR SURPLUS FILL

- Responsibility falls to landowner AND contractor
 - *It's illegal to undertake development or allow another person to undertake development*
 - Confirm that approvals are in place
 - Landowners can assign contractor as an agent to assist or apply on their behalf
 - Mapping, sediment control plans, etc.



IDENTIFY WETLANDS EARLY IN PROJECT PLANNING

- Your responsibility to identify wetlands
 - Consultant may be required
 - Wet boots in spring = probably wetland
- Identify potential excess fill sites early
 - CS application review can take 30 days+
 - Expect delays if wetlands aren't properly identified
 - Confirm that the site conforms with wetland guidelines



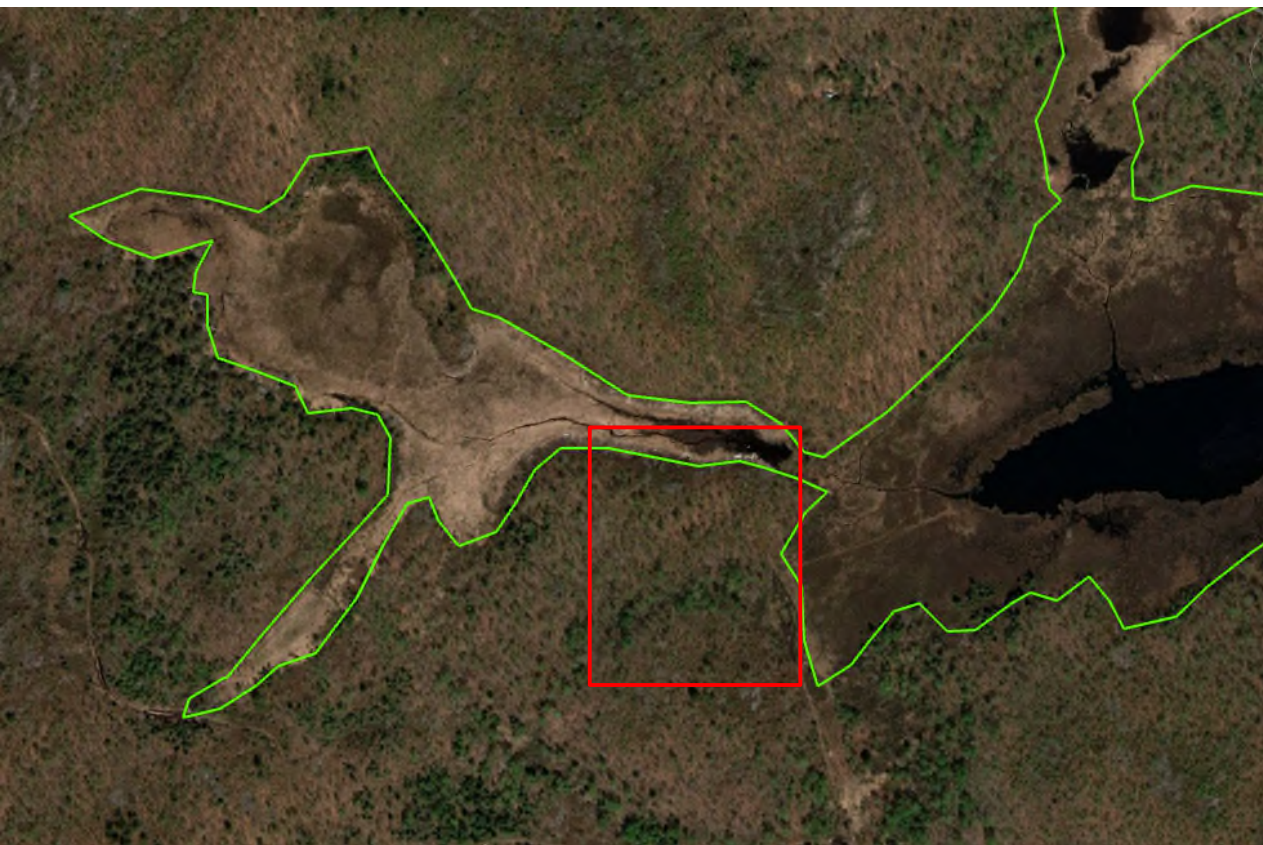
MAP WETLANDS



MAP WETLANDS



MAP WETLANDS



NEW GUIDELINES



- Within wetland
- **No development**
 - Except under very limited circumstances
 - Not for the placement of fill if no other purpose

NEW GUIDELINES



- Within 30 metres
- Direct application required
- Development *generally* not permitted
 - Must conform to Wetland Guidelines
 - Small scale
 - No other land available
 - No impact to hydrology of wetland
 - No pollution

NEW GUIDELINES



- 30 to 120 metres
- Direct application required
- Development generally permitted
 - Must conform to Wetland Guidelines
 - No impact to hydrology of wetland
 - No pollution

NEW GUIDELINES



- > 120 metres
- Permission not required from Conservation Sudbury
- CGS Site Alteration Permit?

TAKE AWAYS

- Plan dump sites early
- Map wetlands
- Develop > 30 metres
- Apply early
- Assist landowners



QUESTIONS AND DISCUSSION

Can't think of anything right now? Contact me later:

Sarah Woods, Regulations Officer

sarah.woods@conservationsudbury.ca

705.674.5249 ext. 201

