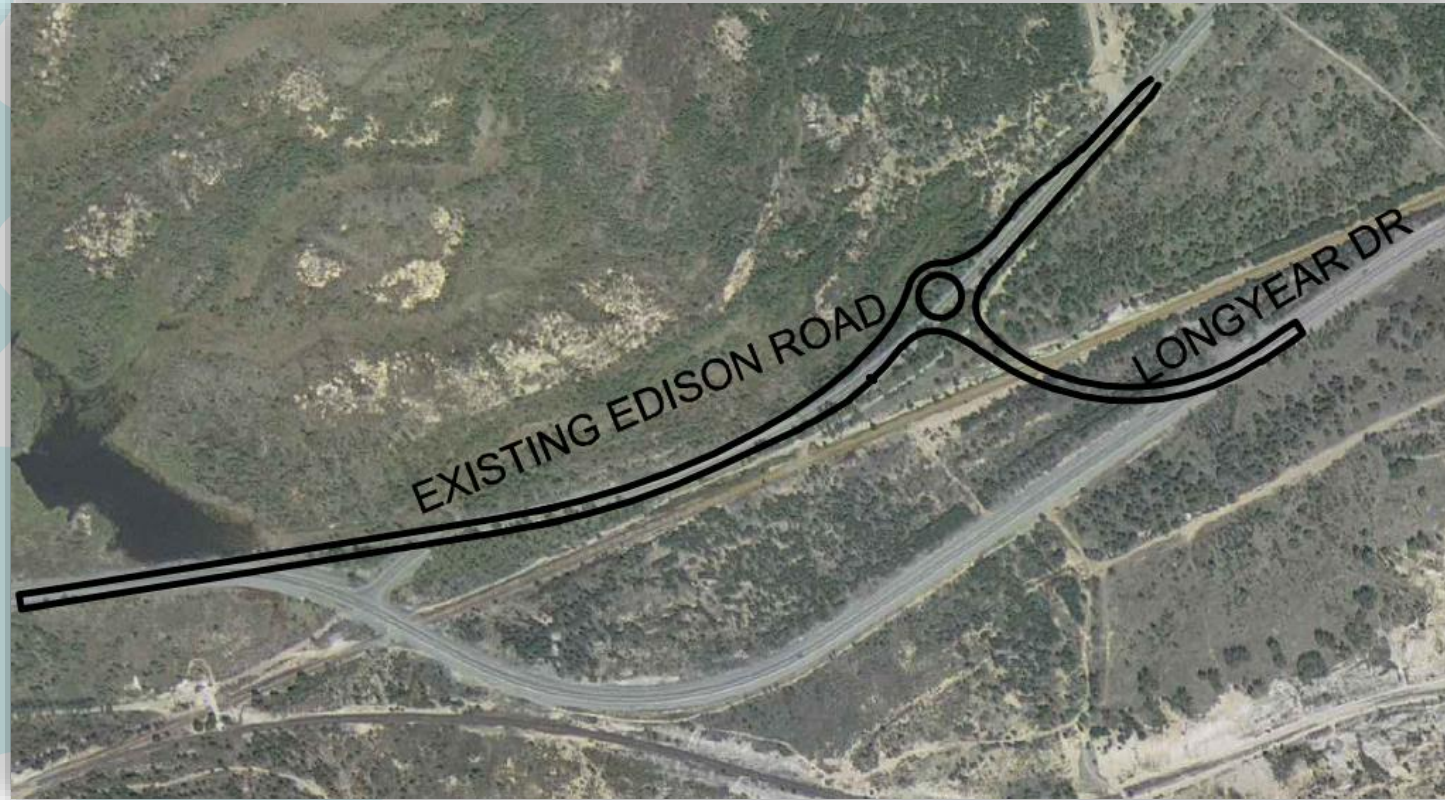


Longyear Drive (MR89) at Edison Road Roadway Realignment and Intersection Improvements



Presentation By:
Miranda Edwards,
Project Manager

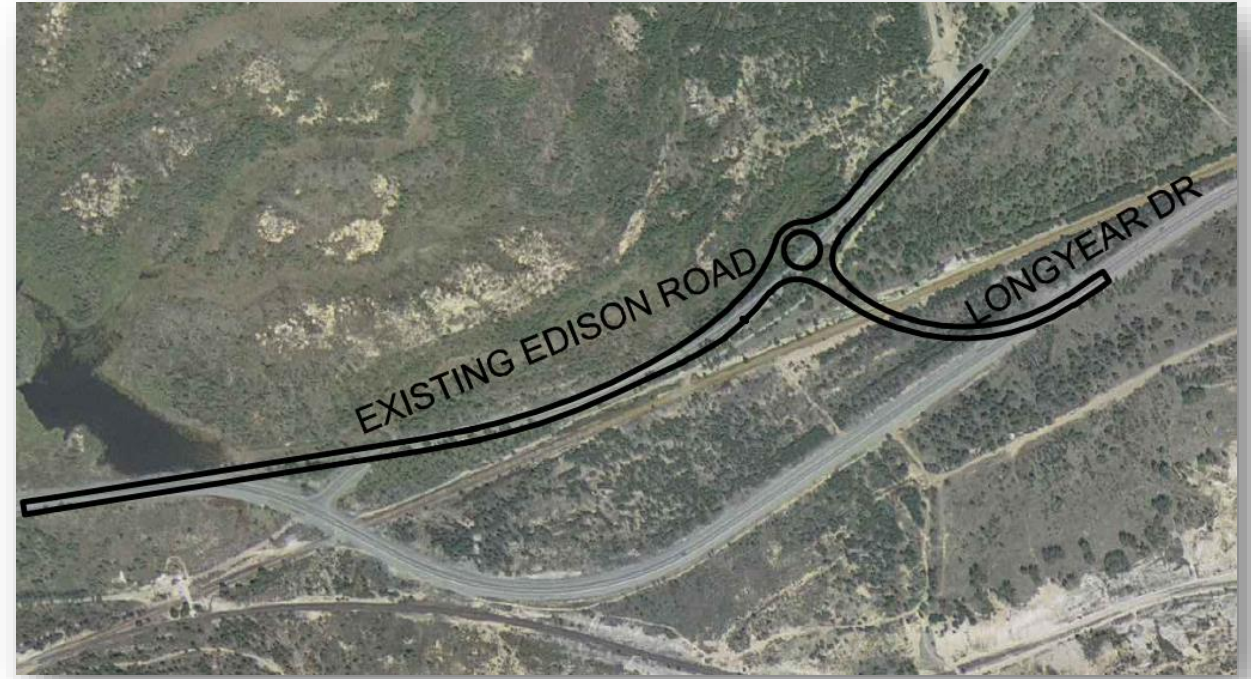
2019-2027 Strategic Plan Priorities

Greater | Grand
Sudbury™



Project Highlights

- Realign the intersection of Longyear Drive and Edison Road by introducing a roundabout, eliminating the left-hand turn.
- Close a section of Longyear Drive (MR89) eliminating the “s-curve”
- Landscape the closed section of Longyear Drive (MR89) and introduce a dedicated wildlife habitat for birds and other species.

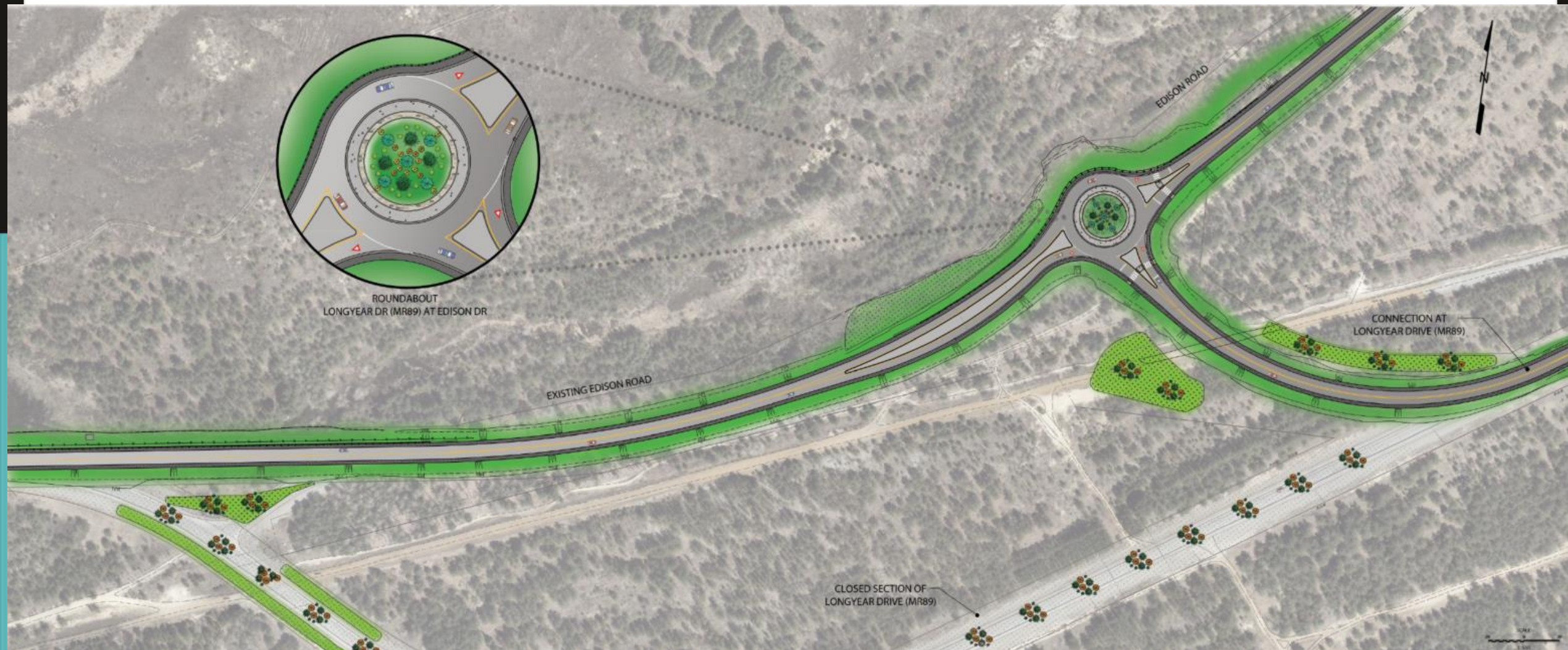


What is a Roundabout?

A roundabout is an intersection where two or more roads meet. Traffic circulates counter-clockwise, to the right of a centre island. All entering vehicles must yield to traffic already in the roundabout.



Overview of the Roundabout



What signs
should you be
looking for?

Quels panneaux
de signalisation
devriez-vous
rechercher?

Slow down,
roundabout
ahead.



Ralentissez;
carrefour
giratoire droit
devant.

Exit sign for
Roundabout
ahead.
Go Straight
through, turn
left or
turn right.



Panneau des
sorties pour
le carrefour
giratoire droit
devant. Vous
pouvez
continuer tout
droit, virer à
gauche ou virer
à droite.

There are two
entry lanes in
the roundabout.
Choose the
correct lane.
If you are
turning left,
get in the left lane.



Le carrefour
giratoire a deux
voies d'entrée.
Choisissez la
voie appropriée.
Si vous virez
à gauche,
engagez-vous
dans la voie
de gauche.

Yield to all
traffic in
the roundabout.



Cédez le
passage aux
automobilistes et
aux cyclistes qui
circulent
déjà dans le
carrefour giratoire.

Drive counter-
clockwise
only in the
roundabout.



Circulez
seulement
dans le sens
antihoraire
dans le
carrefour giratoire.

Safety Improvements

- ✓ Reduce injury collisions
- ✓ Keep traffic moving
- ✓ Reduce unnecessary stops
- ✓ Reduce unnecessary idling and air pollution
- ✓ Traffic travels at slower speeds
- ✓ Improve intersection appearance
- ✓ Improved lighting



Rules of the Roundabout

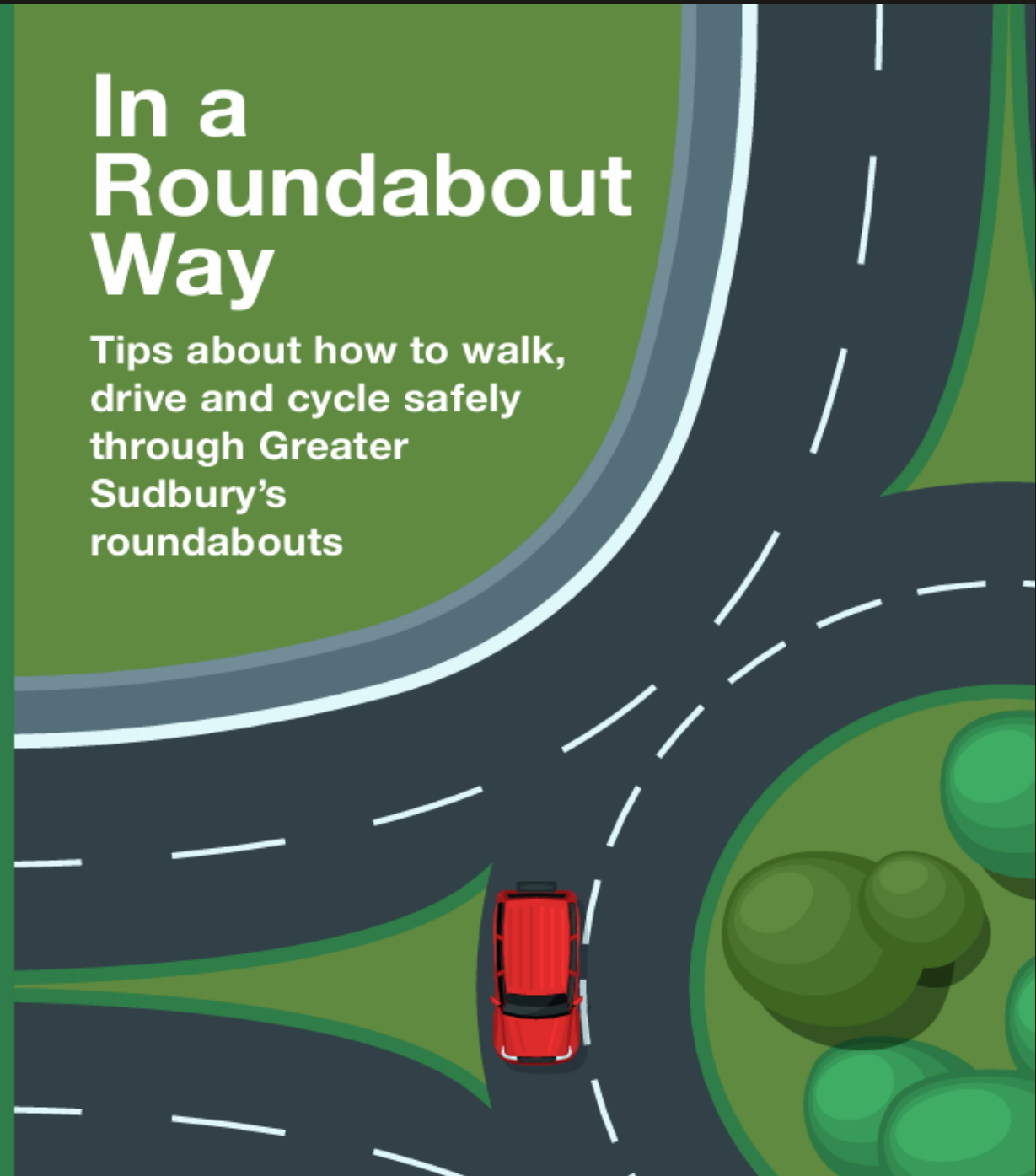
- ❗ Slow down when you approach the roundabout
- ❗ Watch for signs and choose the correct entry lane
- ❗ Stop for pedestrians. Pedestrians in the crosswalk have the right of way!
- ❗ Yield to all traffic already in the roundabout, including cyclists
- ❗ Give large vehicles extra space
- ❗ Signal in the direction you want to go as you're approaching the roundabout.
- ❗ When the coast is clear and there's a gap in traffic, proceed into the roundabout
- ❗ **Never pass another vehicle in the roundabout**

greatersudbury.ca/roundabouts



In a Roundabout Way

Tips about how to walk, drive and cycle safely through Greater Sudbury's roundabouts





Emergency Vehicles



- **If you have not entered the roundabout:**
pull over to the right, if you can do so safely
- **If you have entered the roundabout:**
drive around to your intended exit. Leave the roundabout completely before you pull over to the right, then let the emergency vehicle pass.
- **Do not stop inside of a roundabout**





Large Vehicles



- When entering a roundabout, stay in your lane
- The concrete truck apron in the centre island accommodates trailer drag





Pedestrians



- Use crosswalk around the outside of the roundabout.
- Do not cut across the middle of the roundabout.
- Use the “splitter island” to cross one direction of traffic at a time





Cyclists



- If you are an experience cyclist, you can move through the roundabout the same way you would in a vehicle:



- *merge into the centre of the vehicle lane before the bike lane or shoulder ends. Don't hug the curb. Stay in the middle of the lane to avoid collisions*



- New cyclists should get off their bicycles and cross the roundabout as pedestrians



Snowmobile Crossing

- The section of Trail 74 along Longyear Drive, and the roadway crossing at Longyear Drive will be closed in favour of an alternative location in the future.
- This will be reviewed by the Association once the roundabout has been constructed.



For More Information

- For further questions regarding this closure please contact the Sudbury Trail Plan Association at manager@sudburytrailplan.ca
- Please visit <https://www.ofsc.on.ca/trail-maps/> for an Interactive Trail Guide.



Traffic Impacts

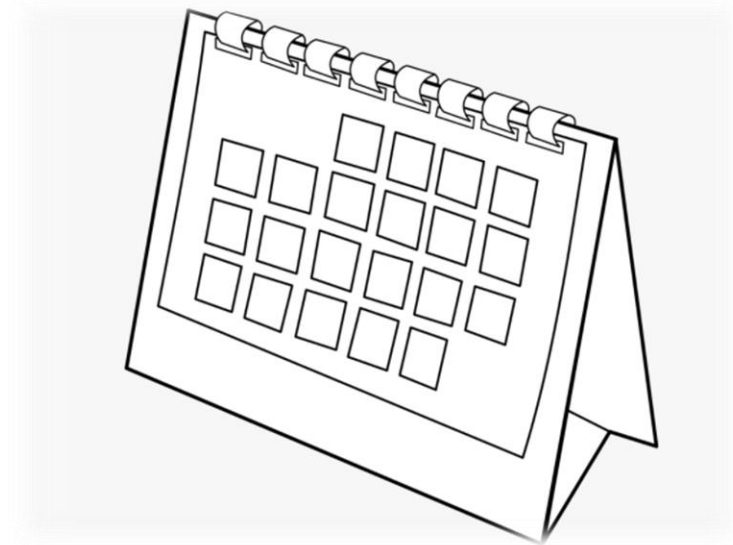
- Longyear Drive will remain **open** during construction of the roundabout
- Edison Road will be closed during construction of the roundabout



- The speed limit on Longyear Drive from the roundabout into Falconbridge will change from 80km/hr to 50km/hr.

Construction Schedule

- Clearing in the area of the new roundabout is required to be completed by April 30th 2022, to meet Migratory Bird Regulations
- The roundabout will be constructed through the summer months and will be opened in the fall.



What about the
closed
section of Longyear
Drive?



Existing Longyear Drive

- The section of Longyear Drive that will be closed will be landscaped and will be a dedicated habitat for migratory birds.



The Project Team

For more information please contact:



Miranda Edwards

Project Manager

Miranda.Edwards@greatersudbury.ca

705-674-4455 ext 4246

Krista Trafford

Design Co-ordinator

Krista.Trafford@greatersudbury.ca

705-674-4455 ext 4249

www.greatersudbury.ca/2022construction

