

# Construction NOTICE



## Longyear Drive (MR89) at Edison Road

### Roadway Realignment and Intersection Improvements

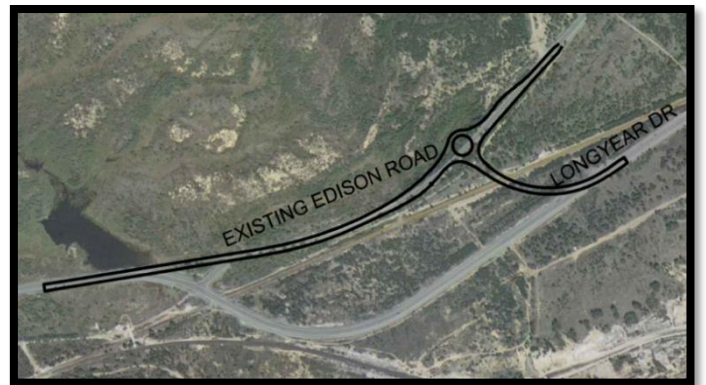
The City of Greater Sudbury will be completing road improvements on Longyear Drive (MR89) at Edison Road in Falconbridge.

Construction by the City's contractor, Interpaving Limited, will be carried out between April and November, 2022.

**\*Completion date is dependent on property acquisition\***

#### Project Highlights:

- Realign the intersection of Longyear Drive (MR89) and Edison Road, by introducing a roundabout, eliminating the left-hand turn,
- Close a section of Longyear Drive (MR89) eliminating the 'S-Curve',
- Landscape the closed section of Longyear Drive (MR89) and introduce a dedicated wildlife habitat for birds and other species.



	<p><b>Before Construction Begins:</b></p> <ul style="list-style-type: none"> <li>• Soils Investigation to determine sub-soil surface conditions. This work is expected to take place prior to Construction.</li> <li>• Work crews will mark the locations of underground utilities, such as gas, water and cable so that the construction work does not interfere with these utilities.</li> <li>• Once a street has been repaved with new asphalt, roadway cuts to install new utilities will not be permitted for a period of three years. Therefore, you should contact your hydro, gas, telephone, or cable providers should you require changes to these services, <b>as well as notify the Project Manager.</b></li> </ul>
	<p><b>Traffic:</b></p> <p>Plans are in place to manage traffic in the area to ensure the safety of workers and residents. You may experience some delays and increased traffic on nearby main and side streets.</p> <ul style="list-style-type: none"> <li>• <b>A full road closure will occur on Edison Road, from Longyear Drive (MR89) to Lindsley Street.</b> Emergency Services will be notified of all closures.</li> <li>• At times, Longyear Drive (MR89) may be reduced to one lane of traffic to accommodate construction.</li> </ul>
	<p><b>Road and Sidewalk Access:</b></p> <p>Safe access for pedestrians will be maintained. Parents are reminded to teach children about road safety in active construction zone areas. Residents who have accessibility needs, such as wheelchair access, are asked to contact the City Field Inspector or Project Manager listed on this notice.</p>
	<p><b>Emergency Services and Public Transit:</b></p> <p>Access for police, fire and paramedic services vehicles will be maintained at all times. Should the work affect the school bus route, the Sudbury Student Services Consortium will inform you of any changes to the scheduled route.</p>

City makes every effort to reduce the impact to nearby residents and business owners. The City of Greater Sudbury and its contractors are committed to public safety and will monitor the ongoing progress of construction. Thank you for your patience as we work to improve the roads and infrastructure in your neighbourhood.

For more information, please visit [www.greatersudbury.ca/2022construction](http://www.greatersudbury.ca/2022construction). If you do not have access to the website, please contact the Project Team members listed below and a package with further project details can be mailed to you.

#### Questions about upcoming construction can be directed to:

**Project Manager:**

Miranda Edwards  
705-923-1350 (cell)  
[Miranda.Edwards@greatersudbury.ca](mailto:Miranda.Edwards@greatersudbury.ca)

**Designer:**

Krista Trafford  
249-377-9760 (cell)  
[Krista.Trafford@greatersudbury.ca](mailto:Krista.Trafford@greatersudbury.ca)

**Field Inspector:**

Stephan Belanger  
705-920-4102 (cell)  
[Stephan.Belanger@greatersudbury.ca](mailto:Stephan.Belanger@greatersudbury.ca)



# Longyear Drive (MR89) at Edison Road Roadway Realignment and Intersection Improvements

## Project Details:

### *What are the benefits of the roundabout?*

- By changing the intersection from a left-hand turn on an 'S-Curve' to a roundabout, injury collisions will be reduced because there are fewer points of conflict.
- Traffic enters a roundabout at a slower speed, keeping traffic moving and reducing unnecessary stopping, idling and air pollution.
- A paved shoulder will be added on both sides of Edison Road with a pedestrian crossing connecting each side for enhanced pedestrian safety.
- Trees and shrubs will be planted in the center of the roundabout. This eliminates headlight glare from on-coming traffic at nighttime and remove the perception of traffic lanes coming straight through. This enhances driver safety.
- There is a proposed speed limit reduction on Longyear Drive (MR89) from the roundabout into Falconbridge, slowing the speed of the traffic entering the community.

### *What will the impacts to traffic be during construction? How long will construction take?*

- Edison Road from Longyear Drive (MR89) to Lindsley Street will be closed during the construction of the roundabout.
- There will be lane closures on Longyear Drive (MR89) when constructing the connections of the roundabout to the roadway.
- Clearing of the area for the roundabout construction will occur in April 2022.
- Construction of the roundabout and the connections to Longyear Drive (MR89) and Edison Road, including the landscaping work on the closed section of Longyear Drive (MR89) will be completed between May to November 2022.

### *What is happening to the snowmobile trail?*

- The City's project team has communicated the details of the realignment and intersection improvements at Longyear Drive (MR89) and Edison Road with the Sudbury Trail Plan Association. Through a review by both parties, it was determined the section of Trail 74 along Longyear Drive (MR89), and the trail crossing Longyear Drive (MR89) will be closed in favour of an alternative location in the future. The details of this relocation have not been determined at this time and will be reviewed by the Association once the roundabout has been constructed.
- For further information, please contact the Sudbury Trail Plan Association at [manager@sudburytrailplan.ca](mailto:manager@sudburytrailplan.ca).
- Please visit <https://www.ofsc.on.ca/trail-maps/> for an Interactive Trail Guide.

For more information, please visit [www.greatersudbury.ca/2022construction](http://www.greatersudbury.ca/2022construction). If you do not have access to the website, please contact the Project Team members listed below and a package with further project details can be mailed to you.

## Questions about upcoming construction can be directed to:

**Project Manager:**

Miranda Edwards  
705-923-1350 (cell)  
[Miranda.Edwards@greatersudbury.ca](mailto:Miranda.Edwards@greatersudbury.ca)

**Designer:**

Krista Trafford  
249-377-9760 (cell)  
[Krista.Trafford@greatersudbury.ca](mailto:Krista.Trafford@greatersudbury.ca)

**Field Inspector:**

Stephan Belanger  
705-920-4102 (cell)  
[Stephan.Belanger@greatersudbury.ca](mailto:Stephan.Belanger@greatersudbury.ca)