



## GOVA Transit Farebox Upgrade Project – New Farebox Features

Riders will notice some differences in the look and function of the new fareboxes which are designed to be more accessible and user friendly. The new fareboxes feature:

- An open design with easily accessible payment areas for cash fares
- Larger, clearer display screens

Additionally, the audio prompts to alert riders to any issues with their fare payment will be accompanied by a text alert on the display screen.

The information below provides an overview of the changes to the design of the new farebox.



# Design

## Old Farebox



A photo of the old farebox showing, the swipe located at the back of the unit on an angle, paper money deposited to the right, coins deposited to the right underneath paper money.



New Farebox



A photo of the new farebox demonstrating swipe area horizontally at the front of the unit, area for paper money to be deposited to the right, coins to be deposited to the left.



# Display Screen

Old Farebox – Smaller, narrower, lower contrast display screen



A photo of the old farebox showing a yellow box around the display screen.



New Farebox – Larger, clearer, higher contrast display screen

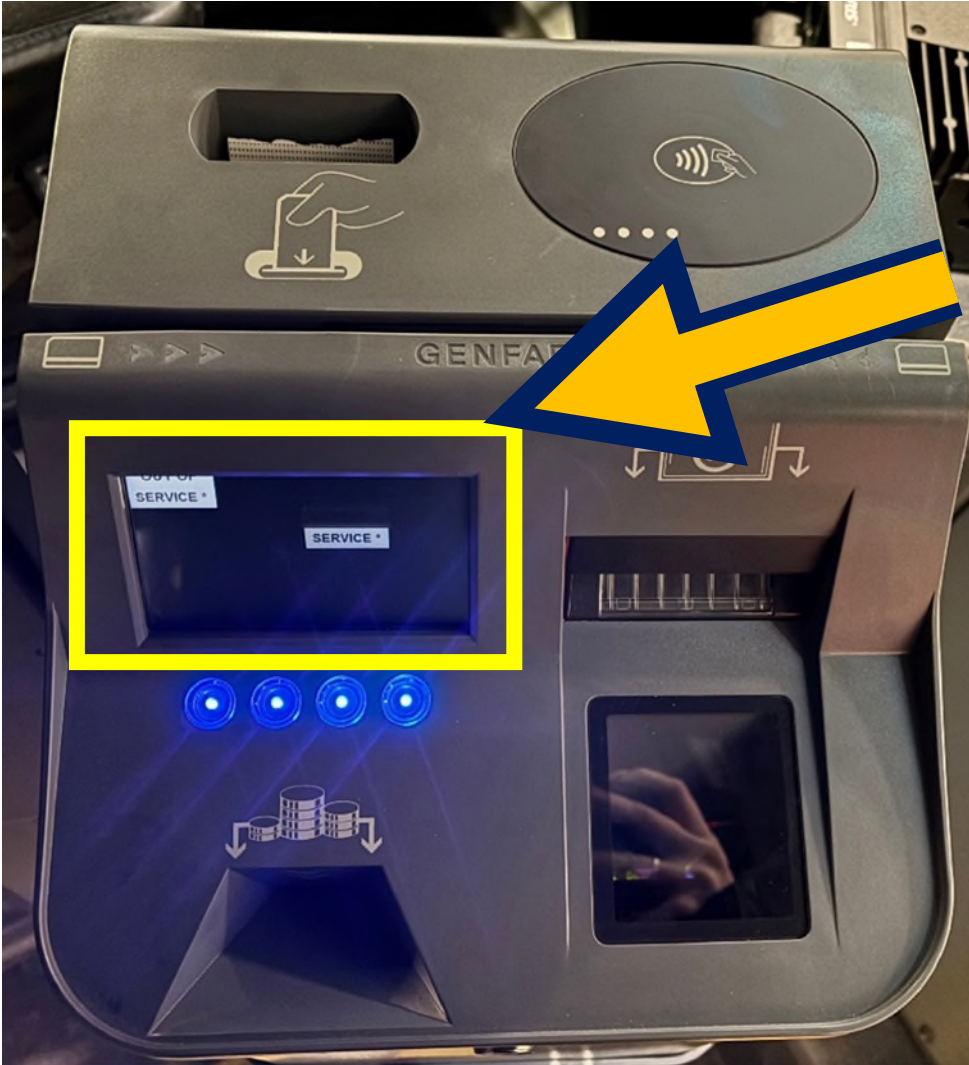


Photo of new farebox with yellow box around the new display screen.



## Fare Payment – Ride Cards

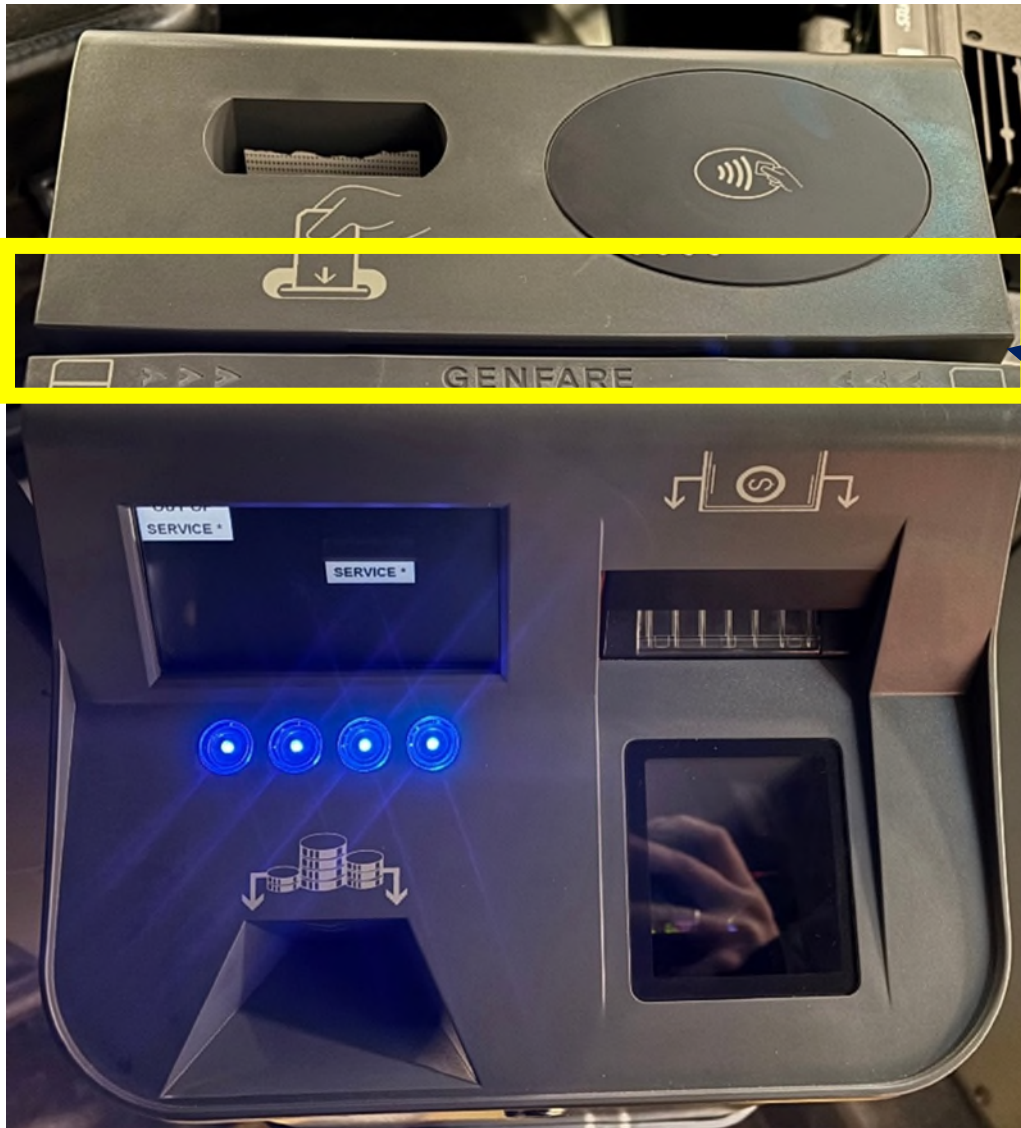
Old Farebox – Swipe for ride cards located at back of farebox on an angle



A photo of the old farebox showing, yellow box around where riders used to swipe their ride cards.



New Farebox – Swipe for ride cards located horizontally at front of farebox



New Farebox demonstrating swipe area horizontally at the front of the unit, highlighted with a yellow box around it.



# Cash Fares

Old Farebox – Paper money deposited on right-hand side of farebox, above the coin deposit



A photo of the old farebox showing, yellow box around the area where riders would deposit paper money for cash fare payments.



New Farebox – Paper money deposited on right-hand side of farebox



Photo of new farebox with yellow box around the area where paper money cash fare is deposited.



Old Farebox – Coins deposited on left-hand side of farebox



A photo of the old farebox showing, yellow box around the area where riders would deposit coins for cash fare payments.



New Farebox – Coins deposited on left-hand side of farebox



Photo of new farebox with yellow box around the area where coin cash fare is deposited.