



Environmental Services

Annual Report

2014 | 2015



Environmental Services

Collection Services	2
Diversion Services	3
Disposal Services	3
3R Equipment and Educational Services	3
Clean-up Programs and Litter Abatement	3

Recent Developments

2015-2020 Solid Waste Strategy	4
New Yard Waste Packaging Requirements	4
Big Green Pilot Project	4

Feature

Registered Electronic Collection Site	5
Ontario Electronic Stewardship (OES)	5

Statistics

Tonnages Managed at City Facilities	7
Residential Tipping Fee Holiday	8
Residential Trips to Landfill and Waste Diversion Sites	
Sudbury	9
Hanmer	10
Azilda	11
Walden	12



Collection Services

Environmental Services provides the following waste collection services to residents within the City of Greater Sudbury:

Low-density residential buildings (6 units or less) receive:

- Weekly garbage collection for up to 3 approved garbage containers
- Weekly leaf and yard trimmings collection for an unlimited amount of approved containers
- Weekly furniture and appliance collection
- Weekly blue box recycling collection for an unlimited amount of approved containers
- Weekly Green Cart organics collection for an unlimited amount of approved containers
- Collection of household hazardous waste by appointment

High-density residential buildings (7 units or more) on a curbside collection system receive:

- Weekly garbage, leaf and yard trimmings, recycling and Green Cart organics collection by agreement with property owner
- Collection of household hazardous waste by appointment



High-density residential buildings (7 units or more) on a centralized collection system receive:

- Weekly garbage and recycling collection by agreement with property owner
- Collection of household hazardous waste by appointment

Industrial, commercial and institutional buildings receive:

- Weekly yellow box recycling collection by agreement
- Weekly yellow bag garbage collection by agreement

Multi-type properties receive:

- Weekly waste collection services to the residential dwellings within the property (based on terms and conditions listed in agreement with the property owner)



Diversion Services

Environmental Services processes the following waste from all sectors within the City of Greater Sudbury:

- Blue box recyclables
- Leaf and yard trimmings, Christmas trees
- Scrap metal and white goods
- Electronic waste
- Clean and non-treated wood waste
- Other wood waste
- Sod
- Concrete, brick and block
- Tires
- Reusable cloth items
- Organics
- Derelict motor vehicles
- Household Hazardous Waste



Disposal Services

The City of Greater Sudbury owns and operates (via private contractors) three active landfill sites, two closed landfill sites and one small vehicle transfer station. The operating landfill sites are located in Sudbury, Hanmer and Azilda. The small vehicle transfer station is located in Walden.

3R Equipment and Educational Services

Environmental Services provides backyard composters, green carts, kitchen collectors, blue boxes and Big Blue large-capacity recycling containers.

Our division is also responsible for the promotion and education of all 3R (Reduce, Reuse, Recycle) activities and anti-litter awareness campaigns.

Clean-up Programs and Litter Abatement



Environmental Services manages the City of Greater Sudbury's clean-up initiatives, including Adopt-a-Road, Adopt-a-Spot, Adopt-a-Bin, Annual Clean-up Blitz and the Derelict Motor Vehicle Removal and Recycling Program.

One part-time City crew collects roadside litter and maintains litter containers across the City. This service

is supplemented each spring with two Automated Litter Collection Units and with student crews that collect roadside litter.

2015-2020 Solid Waste Strategy

A solid waste strategy was developed and presented to the Operation's Committee in November 2015. The first five strategies were developed over the last few years with input and guidance from the Solid Waste Advisory Panel and the sixth strategy was developed in house by staff.

Each strategy proposes planned actions and time lines. Many items will be brought back for further discussion and certain items will require the direction or approval from Council in order to proceed.

The six strategic priorities include:



Strategy 1
Focus on Education



Strategy 2
The Construction and Demolition Material Recycling Site



Strategy 3
Increase Policies that Induce Waste Diversion



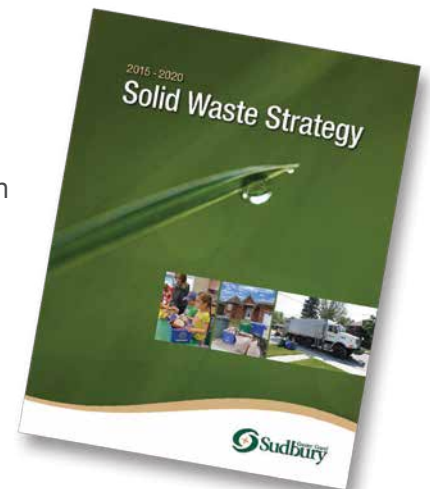
Strategy 4
Solid Waste Processing and Disposal Capacity



Strategy 5
Expand the Organic Program



Strategy 6
Divisional Improvements



The full document is available online under the Publications tab at www.greatersudbury.ca/wastemanagement.



New Yard Waste Packaging Requirements

In 2015, Council approved a new packaging requirement for leaf and yard trimmings. Plastic bags were eliminated as an approved container for the collection or for the disposal of leaf & yard trimmings. Plastic bags are not compostable and must be removed prior to the chipping and composting of the leaf and yard trimmings. This has reduced labour costs and allowed us to move to a more environmentally responsible practice.

Big Green Pilot Project

A pilot project for a reusable leaf & yard trimmings container was initiated in 2015. The container has been nick named the "Big Green" and is available to residents on the City's curbside collection program at a subsidized rate of \$30 (limit of one (1) container per household). This container is ideal for residents who place small amounts of leaf and yard trimmings at the curb on a frequent basis.



Registered Electronic Collection Site



The City of Greater Sudbury is a registered electronic collection site with the Ontario Electronic Stewardship (OES) organization.

We accept electronic waste at no charge at the following City sites:

Sudbury Landfill & Waste Diversion Site

2870 Kingsway in Sudbury

(Hwy 17 East, about 2 km past Mid-North Motors, across from the Chateau Guay Motel Moonlight Avenue intersection)

Hanmer Landfill & Waste Diversion Site

off Gravel Drive from the Landfill Site Road in Hanmer

Azilda Landfill & Waste Diversion Site

off Highway 144 from Montee Rouleau in Azilda

Walden Small Vehicle Waste Transfer Site

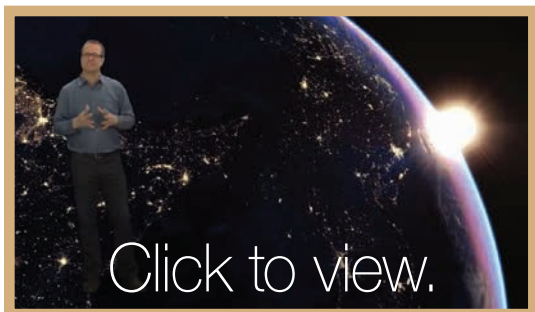
off Old Highway 17 West from McCharles Lake Road

For additional drop-off locations, please visit the OES website at www.recycleyourelectronics.ca

Ontario Electronic Stewardship (OES)

OES is committed to ensuring that end-of-life electronics and their program are recycled in a manner that protects as worker health and safety.

OES only works with recyclers who have been audited and approved under the national Recycler Qualification Program, which is designed by the electronics industry to ensure that end-of-life electronics are managed in a safe and environmentally sound manner.



The science of recycling electronics

with Alan Nursall

Discovery Canada's Daily Planet (video)



Statistics



Tonnages managed at City facilities:

	2005	2006	2007	2008	2009	2010	2011	2012	2013	2014	2015
Waste Landfilled	93,260	98,850	113,389	113,329	107,056	96,435	99,548	101,024	105,509	100,749	100,666
Blue Box Materials	15,128	15,593	15,367	18,168	21,149	20,087	19,804	20,001	20,537	21,113	20,101
Compostables Clean Wood Organics Sod Leaf and Yard Trimmings	5,830	8,907	8,966	9,623	10,942	0	13,790	11,821	12,482	12,274	12,163
Reuse Cloth Reuse Store	237	284	285	433	246	0	319	320	198	157	115
Concrete, Brick and Block	543	842	1,143	1,130	1,075	1,197	1,135	1,280	1,905	1,452	778
Contaminated Wood	566	474	273	4,471	4,292	4,752	4,691	5,375	5,513	1,906	1,612
Electronic Waste	26	25	68	126	193	347	488	510	520	448	466
Household Hazardous Waste	259	290	294	318	289	317	333	319	329	333	385
Scrap Metal and White Goods	1,913	2,648	1,495	1,692	1,614	1,719	1,193	992	1,087	1,107	1,215
Tires	773	789	1,132	3,438	1,551	1,435	265	241	195	184	202

Residential Tipping Fee Holiday

SPRING

	2005	2006	2007	2008	2009	2010	2011	2012	2013	2014	2015
Number of Trips	10,030	9,536	10,063	9,505	8,262	4,824	6,713	7,202	7,545	8,587	10,102
Tonnes Delivered	2,249	2,220	2,195	2,174	1,893	1,141	1,575	1,655	1,754	2,012	2,340
Tires Delivered	8,291	8,255	8,415	9,927	8,863	3,093	4,386	4,646	3,840	3,630	2,780

FALL

	2005	2006	2007	2008	2009	2010	2011	2012	2013	2014	2015
Number of Trips	n/a	n/a	8,025	6,456	5,811	5,170	5,442	5,477	4,833	6,684	8,231
Tonnes Delivered	n/a	n/a	1,282	1,340	1,352	1,079	1,119	1,136	1,056	1,694	1,861
Tires Delivered	n/a	n/a	8,063	6,110	5,043	2,289	3,163	2,016	1,192	1,799	1,741

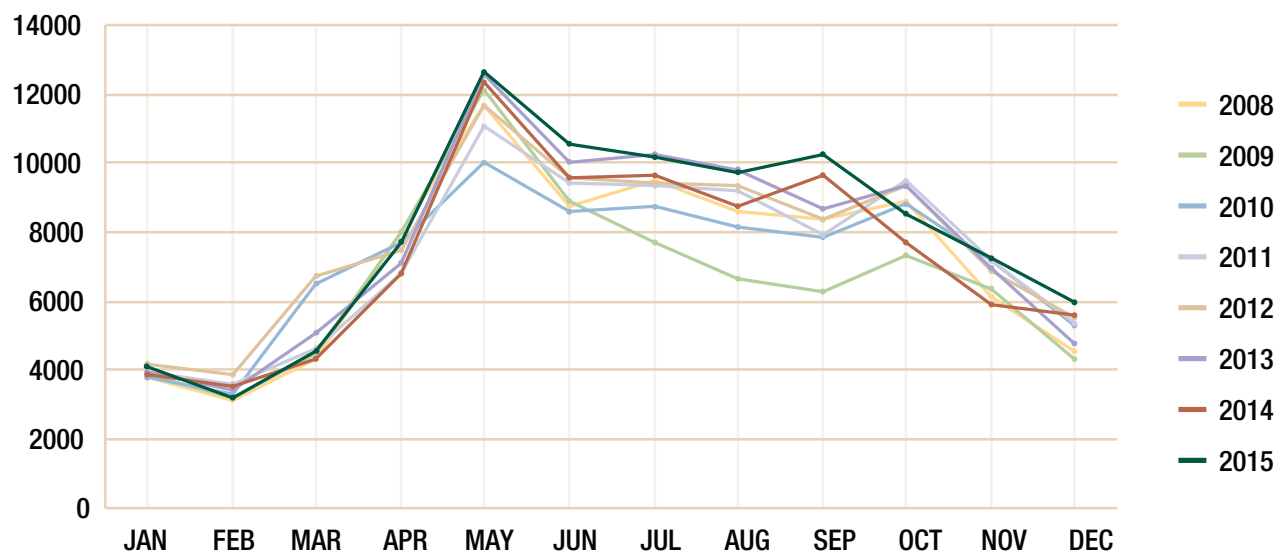
TOTAL

	2005	2006	2007	2008	2009	2010	2011	2012	2013	2014	2015
Number of Trips	10,030	9,536	18,088	15,961	14,073	9,994	12,155	12,679	12,378	15,271	18,333
Tonnes Delivered	2,249	2,220	3,477	3,514	3,245	2,220	2,694	2,791	2,810	3,706	4,201
Tires Delivered	8,291	8,255	16,478	16,037	13,906	5,382	7,549	6,662	5,032	5,429	4,521

Residential Trips to Landfill and Waste Diversion Sites

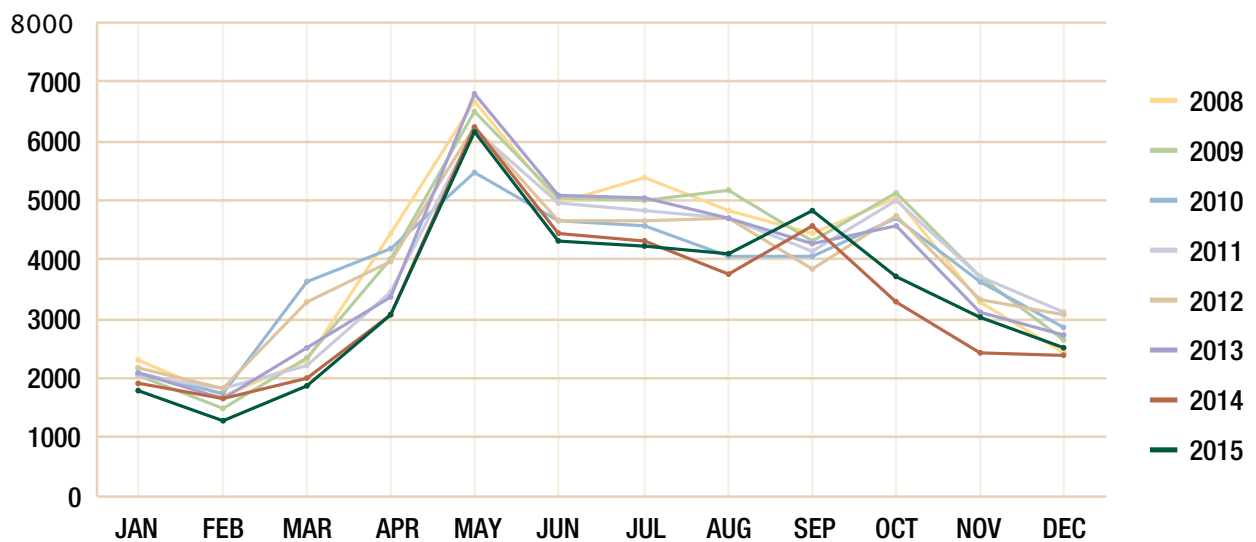
Sudbury

	2008	2009	2010	2011	2012	2013	2014	2015
JAN	3,831	3,893	3,778	3,968	4,132	3,954	3,860	4,108
FEB	3,119	3,188	3,302	3,590	3,840	3,416	3,528	3,163
MAR	4,298	4,489	6,478	4,618	6,700	5,101	4,296	4,527
APR	7,990	7,989	7,671	6,759	7,490	7,066	6,777	7,687
MAY	11,691	12,106	9,988	11,070	11,700	12,540	12,337	12,624
JUN	8,715	8,901	8,571	9,440	9,588	10,002	9,578	10,516
JUL	9,468	7,671	8,720	9,346	9,406	10,276	9,640	10,200
AUG	8,621	6,656	8,147	9,191	9,349	9,796	8,744	9,717
SEP	8,396	6,290	7,830	7,957	8,351	8,670	9,614	10,230
OCT	8,863	7,297	8,827	9,499	9,310	9,348	7,725	8,518
NOV	6,151	6,310	7,198	7,202	6,905	6,918	5,883	7,253
DEC	4,511	4,333	5,280	5,403	5,518	4,775	5,566	5,933



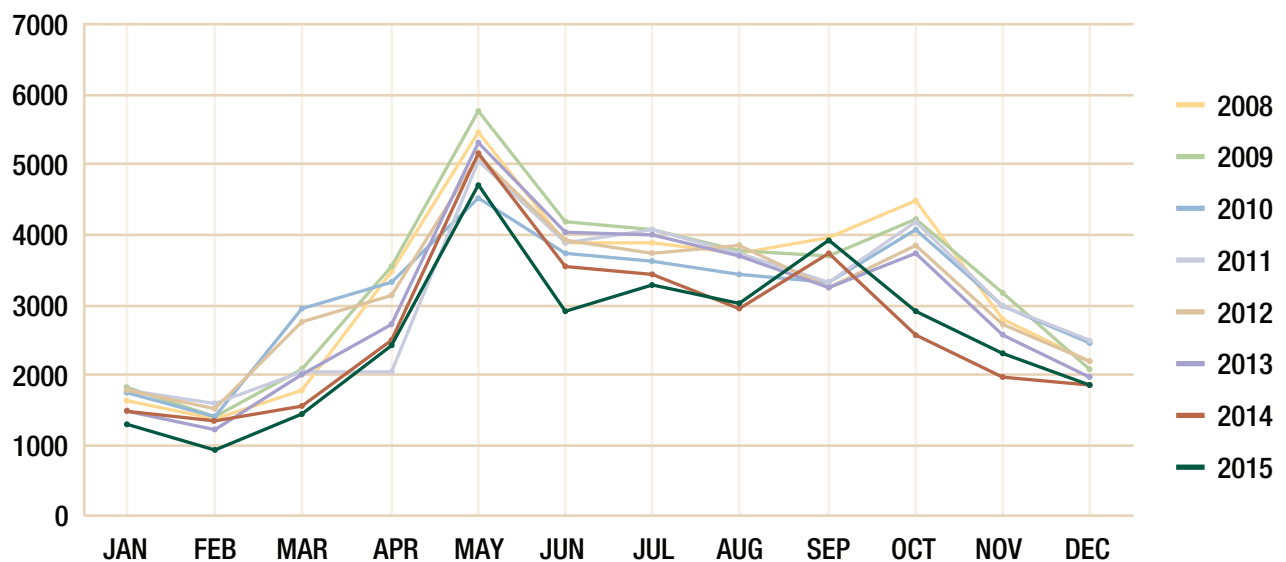
Hanmer

	2008	2009	2010	2011	2012	2013	2014	2015
JAN	2,288	2,055	2,076	2,048	2,148	2,092	1,923	1,791
FEB	1,676	1,487	1,732	1,814	1,810	1,638	1,645	1,279
MAR	2,306	2,356	3,615	2,227	3,286	2,529	1,994	1,858
APR	4,462	4,022	4,172	3,450	3,954	3,376	3,085	3,048
MAY	6,681	6,482	5,484	6,206	6,228	6,799	6,223	6,154
JUN	4,934	5,050	4,661	4,939	4,676	5,068	4,420	4,319
JUL	5,384	4,989	4,568	4,811	4,652	5,047	4,324	4,241
AUG	4,836	5,162	4,065	4,684	4,708	4,707	3,760	4,096
SEP	4,442	4,291	4,062	4,152	3,842	4,251	4,569	4,820
OCT	5,056	5,113	4,690	5,009	4,736	4,562	3,272	3,712
NOV	3,268	3,693	3,639	3,702	3,330	3,114	2,417	3,017
DEC	2,433	2,652	2,856	3,129	3,060	2,722	2,374	2,515



Azilda

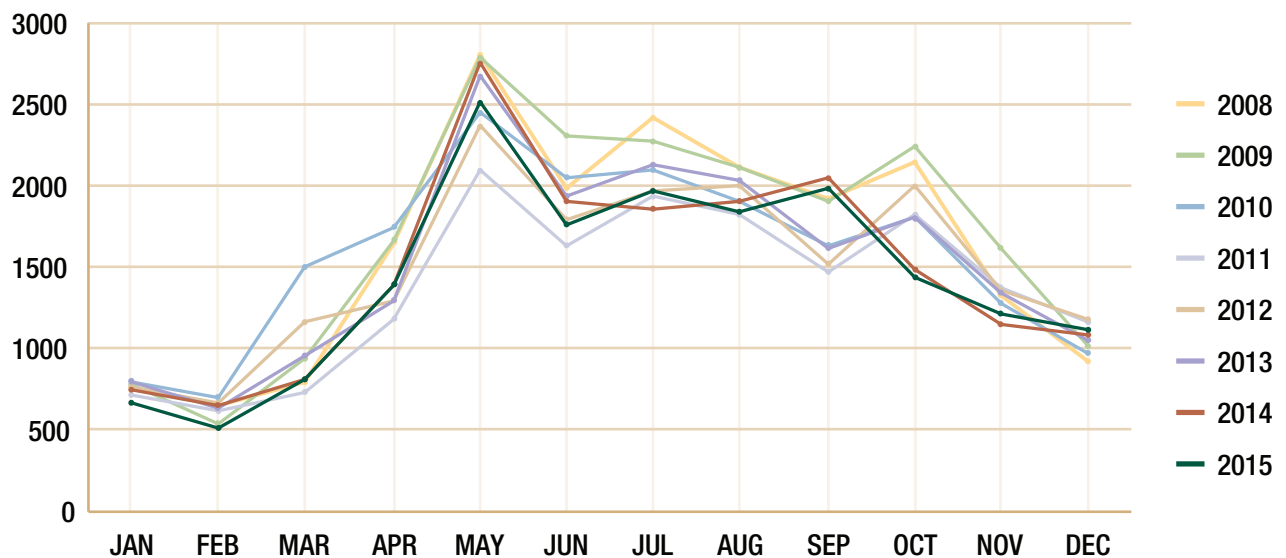
	2008	2009	2010	2011	2012	2013	2014	2015
JAN	1,651	1,821	1,759	1,770	1,775	1,476	1,503	1,306
FEB	1,378	1,405	1,404	1,580	1,523	1,224	1,349	934
MAR	1,797	2,075	2,947	2,061	2,744	2,004	1,563	1,434
APR	3,473	3,549	3,335	2,061	3,152	2,722	2,482	2,427
MAY	5,479	5,773	4,526	5,037	5,118	5,319	5,174	4,724
JUN	3,881	4,203	3,742	3,932	3,927	4,020	3,550	2,922
JUL	4,083	4,067	3,632	3,896	3,753	3,987	3,454	3,288
AUG	3,730	3,770	3,422	3,813	3,849	3,685	2,966	3,036
SEP	3,969	3,680	3,334	3,335	3,257	3,232	3,743	3,911
OCT	4,485	4,232	4,077	4,196	3,838	3,720	2,581	2,896
NOV	2,791	3,163	2,987	2,985	2,717	2,580	1,972	2,294
DEC	2,215	2,096	2,452	2,482	2,192	1,956	1,847	1,853



Residential Trips to Landfill and Waste Diversion Sites

Walden

	2008	2009	2010	2011	2012	2013	2014	2015
JAN	770	785	796	721	758	802	751	675
FEB	645	537	701	619	664	634	649	514
MAR	791	939	1,511	735	1,172	960	815	819
APR	1,651	1,670	1,745	1,183	1,300	1,301	1,394	1,394
MAY	2,805	2,795	2,446	2,099	2,375	2,679	2,757	2,511
JUN	1,989	2,304	2,057	1,640	1,799	1,931	1,906	1,765
JUL	2,418	2,280	2,099	1,932	1,977	2,133	1,851	1,973
AUG	2,118	2,113	1,905	1,833	1,997	2,043	1,902	1,840
SEP	1,918	1,901	1,628	1,470	1,514	1,624	2,057	1,986
OCT	2,154	2,248	1,803	1,825	2,006	1,802	1,493	1,441
NOV	1,321	1,622	1,285	1,376	1,364	1,351	1,146	1,218
DEC	925	1,017	973	1,159	1,176	1,047	1,079	1,117







Environmental Services Division

Tel: 3-1-1

Fax: 705-671-1148

wastemanagement@greatersudbury.ca

www.greatersudbury.ca/wastemanagement