

2011

Solid Waste Services Annual Report





Table of Contents

Solid Waste Services	2
Collection Services	2
Diversion Services	3
Disposal Services	3
Clean-up Programs and Litter Abatement	3
3R Equipment and Educational Services	3
Recent Developments	4
Waste Containers	4
Waste Storage Box	4
Recycling in Downtown Sudbury	4
Computers and Televisions	4
Projects	5
Improving recycling at high density residential buildings	5
Opportunities/Challenges	6
Making our recycling system more efficient	6
Program Statistics	7
Tonnages Managed at City Facilities	7
Residential Tipping Fee Holiday	8
Residential Trips to Landfill and Waste Diversion Sites	8
We can do better	9

Solid Waste Services

Collection Services

Solid Waste Services provides the following waste collection services to residents within the City of Greater Sudbury:

Low-density residential buildings (6 units or less) receive:

- Weekly garbage collection for up to 3 approved garbage containers
- Weekly leaf and yard trimmings collection for an unlimited amount of approved containers
- Weekly furniture and appliance collection
- Weekly blue box recycling collection for an unlimited amount of approved containers
- Weekly Green Cart organics collection for an unlimited amount of approved containers
- Collection of household hazardous waste by appointment

High-density residential buildings (7 units or more) on a curbside collection system receive:

- Weekly garbage, leaf and yard trimmings, recycling and Green Cart organics collection by agreement with property owner
- Collection of household hazardous waste by appointment

High-density residential buildings (7 units or more) on a centralized collection system receive:

- Weekly garbage and recycling collection by agreement with property owner
- Collection of household hazardous waste by appointment

Industrial, commercial and institutional buildings receive:

- Weekly yellow box recycling collection by agreement

Multi-type properties receive:

- Weekly waste collection services to the residential dwellings within the property (based on terms and conditions listed in agreement with the property owner)

2



Diversion Services

Solid Waste Services processes the following waste from all sectors within the City of Greater Sudbury:

- Blue box recyclables
- Leaf and yard trimmings, Christmas trees
- Scrap metal and white goods
- Electronic waste
- Clean and non-treated wood waste
- Other wood waste
- Sod
- Concrete, brick and block
- Tires
- Reusable cloth items
- Organics
- Derelict motor vehicles

Disposal Services

The City of Greater Sudbury owns and operates (via private contractors) three active landfill sites, two closed landfill sites and one small vehicle transfer station. The operating landfill sites are located in Sudbury, Hanmer and Azilda. The small vehicle transfer station is located in Walden.

Clean-up Programs and Litter Abatement

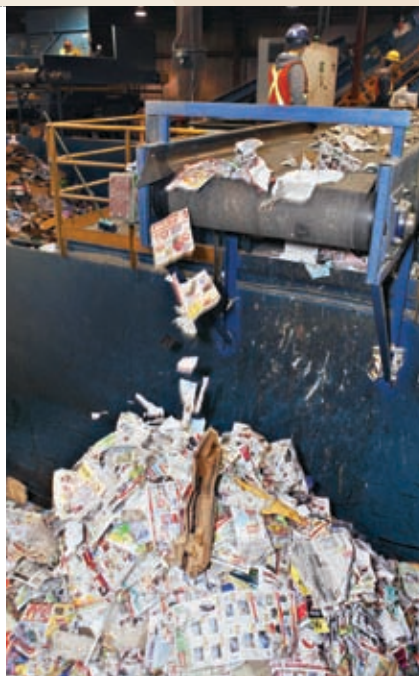
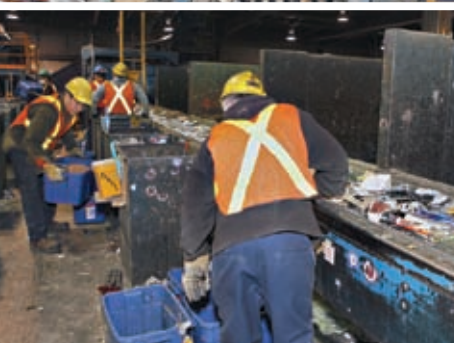
Solid Waste Services manages the City of Greater Sudbury's clean-up initiatives, including Adopt-a-Road, Adopt-a-Spot, Adopt-a-Bin, Annual Clean-up Blitz, 40 Hours of Community Service for Clean-ups and the Derelict Motor Vehicle Removal and Recycling Program.

One part-time City crew collects roadside litter and maintains litter containers across the City. This service is supplemented each spring with an Automated Litter Collection Unit. Two student Trash Trooper crews are also hired during the summer to collect roadside litter.

3R Equipment and Educational Services

Solid Waste Services provides backyard composters, green carts, kitchen collectors, certified compostable bags, blue boxes and Big Blue large-capacity recycling containers.

Our division is also responsible for the promotion and education of all 3R (Reduce, Reuse, Recycle) activities and anti-litter awareness campaigns.



Recent Developments

Waste Storage Box

Residents on the City's curbside collection program now have the option of storing their waste in a **TyeDee** bin. The bin is ideal for residents with bear problems. To participate in the program, residents must call ahead to register and to receive program instructions. For more information, please visit the City website at www.greatersudbury.ca/wastemanagement or call 3-1-1.



Recycling in Downtown Sudbury

In an effort to promote recycling, Downtown Sudbury pays the monthly fee for recycling collection services. Interested downtown Sudbury merchants simply have to purchase the Big Yellow. For more information, please visit the City website at www.greatersudbury.ca/wastemanagement or call 3-1-1.



Waste Containers

The allowable weight limit for all waste containers was changed from **25 kilograms** (55 pounds) to **18 kilograms** (40 pounds).

For specific details on the various waste containers, please visit the City website at www.greatersudbury.ca/wastemanagement or call 3-1-1.

Computers and Televisions

We have commenced the separate collection of computer monitors and televisions. Garbage collection crews will make note that these items are out for collection and a separate recycling truck will be dispatched to collect the items. All items are then shipped to an Ontario Electronic Stewardship approved recycling facility.



Projects

Improving Recycling at High Density Residential Buildings

- Random waste audits were conducted to determine compliance and to promote recycling and waste diversion.
- Each property with front-end garbage collection was inspected for recycling efforts.
- Systems were changed to make recycling as convenient as garbage disposal.
- Larger recycling containers were installed to provide additional capacity for recycling.
- The provision of site specific educational materials on waste and recycling was provided.
- Each property appointed a Recycling and Waste Co-ordinator.
- Each property received a Superintendent's Waste Management Handbook.



Opportunities and Challenges

Making our recycling system more efficient.



Plastic film, plastic straps, electrical cords, Christmas lights, metal wires are not recyclable in the blue box program. These items get caught up in the processing equipment and the entire system must be shut down. Staff must then manually remove the items, which slows down processing and makes the system inefficient.



6

Our goal is to keep non-recyclables out of the blue box recycling stream.

The following non-recyclable items **should not** be placed in the blue box:

- saran wrap type plastic
- plastic wrap around meat
- ziplock bags
- plastic straws
- chip bags
- cracker and cereal plastic bag liners
- blister packages
- foil peel-top lids
- plastic film and straps
- cords, Christmas lights and wires



Compostable items that **should not** be placed in the blue box:

- paper disposable cups
- paper towels
- popcorn bags

Statistics

Tonnages managed at City facilities:

	2001	2002	2003	2004	2005	2006	2007	2008	2009	2010	2011
Waste Landfilled	95,010	93,142	79,280	80,438	93,260	98,850	113,389	113,329	107,056	96,435	99,548
Blue Box Materials	11,275	11,890	13,539	13,931	15,128	15,593	15,367	18,168	21,149	20,087	19,804
Clean Wood	n/a	n/a	n/a	25	478	1,558	1,337	890	811	808	945
Cloth	n/a	n/a	1	1	1	89	4	2	2	1	5
Concrete, Brick and Block	625	n/a	n/a	170	543	842	1,143	1,130	1,075	1,197	1,135
Contaminated Wood	n/a	n/a	n/a	425	566	474	273	4,471	4,292	4,752	4,691
Electronic Waste	n/a	n/a	n/a	5	26	25	68	126	193	347	488
Household Hazardous Waste	301	266	260	270	259	290	294	318	289	317	333
Leaf and Yard Trimmings	1,610	3,000	2,886	4,348	5,202	6,868	7,320	8,341	8,268	7,816	7,744
Organics	n/a	n/a	n/a	n/a	n/a	18	119	187	1,610	3,260	2,822
Reuse Store	n/a	18	15	114	236	195	281	431	244	214	314
Scrap Metal and White Goods	2,082	1,797	1,442	1,655	1,913	2,648	1,495	1,692	1,614	1,719	1,193
Sod	n/a	n/a	n/a	141	150	463	190	205	253	338	268
Tires	691	882	846	329	773	789	1,132	3,438	1,551	1,435	265

Statistics

Residential Tipping Fee Holiday

SPRING	2005	2006	2007	2008	2009	2010	2011
Number of Trips	10,030	9,536	10,063	9,505	8,262	4,824	6,713
Tonnes Delivered	2,249	2,220	2,195	2,174	1,893	1,141	1,575
Tires Delivered	8,291	8,255	8,415	9,927	8,863	3,093	4,386

FALL	2005	2006	2007	2008	2009	2010	2011
Number of Trips	n/a	n/a	8,025	6,456	5,811	5,170	5,442
Tonnes Delivered	n/a	n/a	1,282	1,340	1,352	1,079	1,119
Tires Delivered	n/a	n/a	8,063	6,110	5,043	2,289	3,163

Residential Trips to Landfill and Waste Diversion Sites

2011

	Sudbury	Hanmer	Azilda	Walden
JAN	3,968	2,048	1,770	721
FEB	3,590	1,814	1,580	619
MAR	4,618	2,227	2,061	735
APR	6,759	3,450	2,061	1,183
MAY	11,070	6,206	5,037	2,099
JUN	9,440	4,939	3,932	1,640
JUL	9,346	4,811	3,896	1,932
AUG	9,191	4,684	3,813	1,833
SEP	7,957	4,152	3,335	1,470
OCT	9,499	5,009	4,196	1,825
NOV	7,202	3,702	2,985	1,376
DEC	5,403	3,129	2,482	1,159

2009

	Sudbury	Hanmer	Azilda	Walden
JAN	3,893	2,055	1,821	785
FEB	3,188	1,487	1,405	537
MAR	4,489	2,356	2,075	939
APR	7,989	4,022	3,549	1,670
MAY	12,106	6,482	5,773	2,795
JUN	8,901	5,050	4,203	2,304
JUL	7,671	4,989	4,067	2,280
AUG	6,656	5,162	3,770	2,113
SEP	6,290	4,291	3,680	1,901
OCT	7,297	5,113	4,232	2,248
NOV	6,310	3,693	3,163	1,622
DEC	4,333	2,652	2,096	1,017

45.68%

of waste placed in the
garbage that should be
recycled or diverted.



13.11%

25.13%

7.03%

0.41%



We can do better.



Environmental Services Division

Tel: 3-1-1

Fax: 705-671-1148

wastemanagement@greatersudbury.ca

www.greatersudbury.ca/wastemanagement