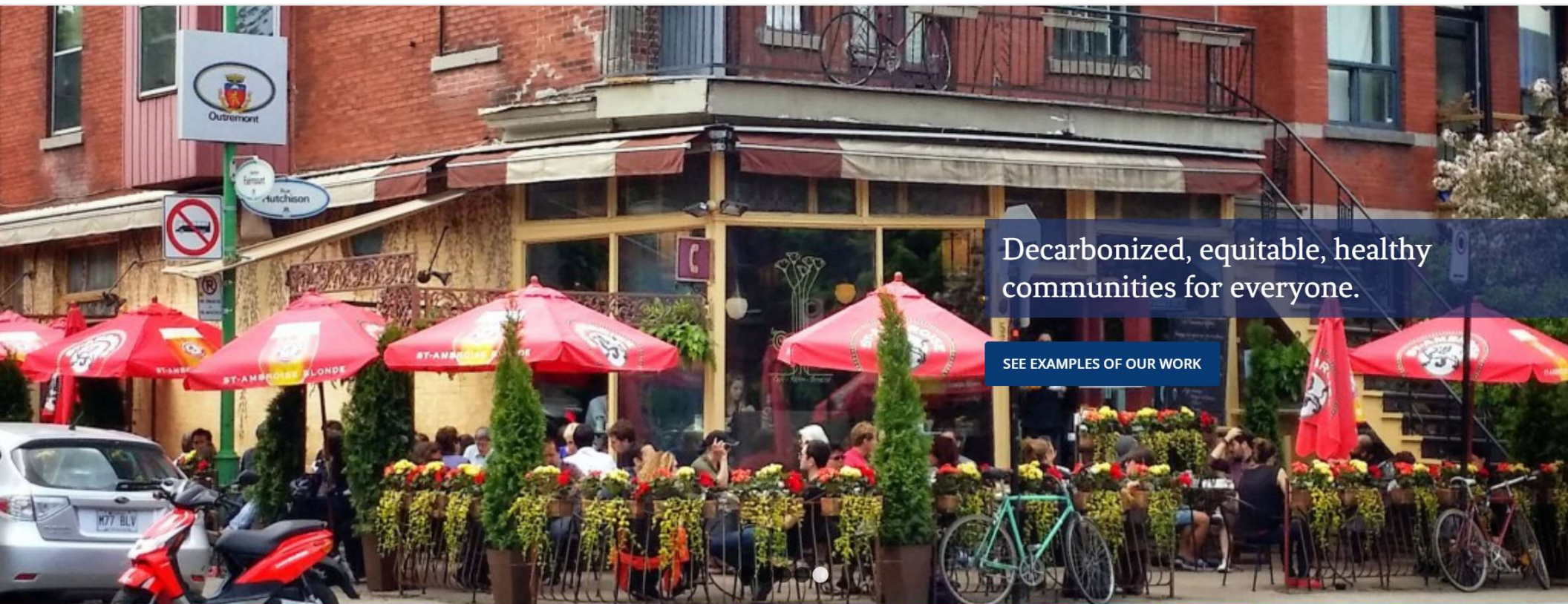




Community Energy & Emissions Plan

Community
Engagement #1



Decarbonized, equitable, healthy communities for everyone.

[SEE EXAMPLES OF OUR WORK](#)



SUSTAINABILITY SOLUTIONS GROUP

For over 15 years SSG has worked with cities, campuses and institutions to address their climate planning challenges.

Our award-winning projects create decarbonized, equitable, healthy cities for everyone.

Today's Agenda

Project overview

Your Stories Exercise

Visioning Exercise

Emissions Reduction Exercise



The Community Energy & Emissions Plan

1. Stakeholder Engagement
2. Energy Baseline and Energy Mapping Assessment
3. Future Scenarios Development
4. CEEP Development



The Community Energy & Emissions Plan

Follows from

Strategic Energy Plan (1995)

International Cities for Climate Protection Program (1997)

Partners in Climate Protection Program (1995)

EarthCare Sudbury Action Plan (2000)

Efficient Sudbury campaign (2006)

80% emissions reduction by 2050 target

Community energy plan discussions led by GSU (2013-2015)

The Community Energy & Emissions Plan

A large array of solar panels is installed in a field. The panels are blue and arranged in rows, stretching towards the horizon. In the background, there is a dense green forest under a clear sky. A tree branch with green leaves is visible on the right side of the frame. The solar panels are mounted on metal frames and are partially obscured by a chain-link fence in the foreground.

Official Plan

Transportation Master Plan

Facilities Master Plan

Community Programs

Community Economic Development Strategic Plan

EarthCare Sudbury Action Plan

Wastewater Master Plan

The Community Energy & Emissions Plan

Low Carbon

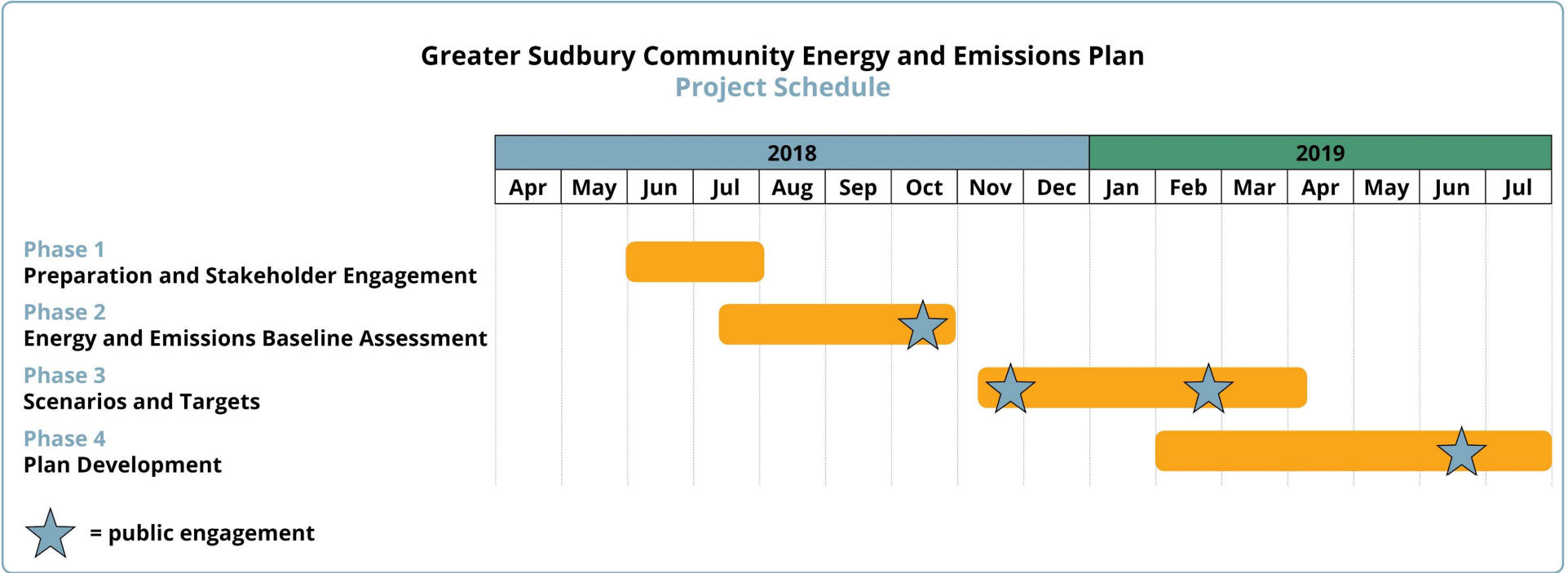
Reduced Energy

Energy Costs

Quality of Life



Project Timeline

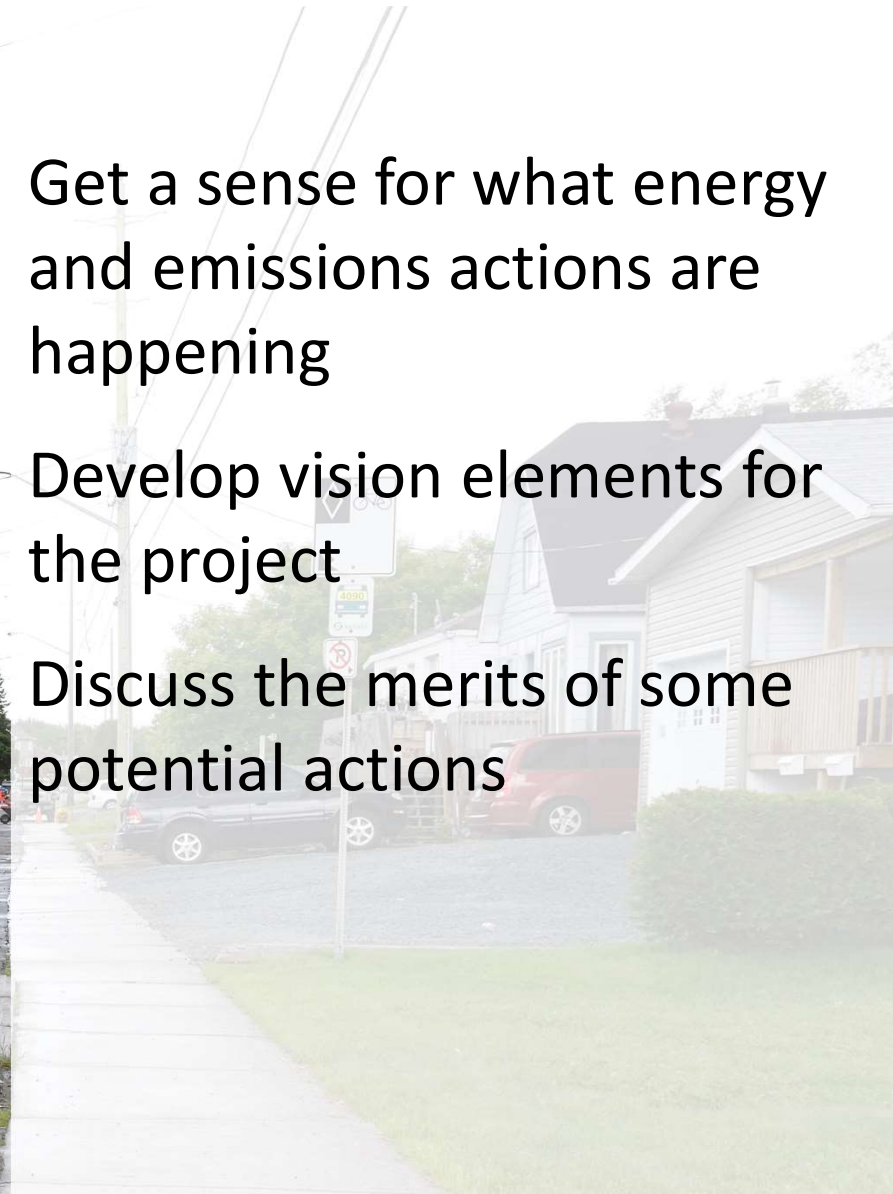
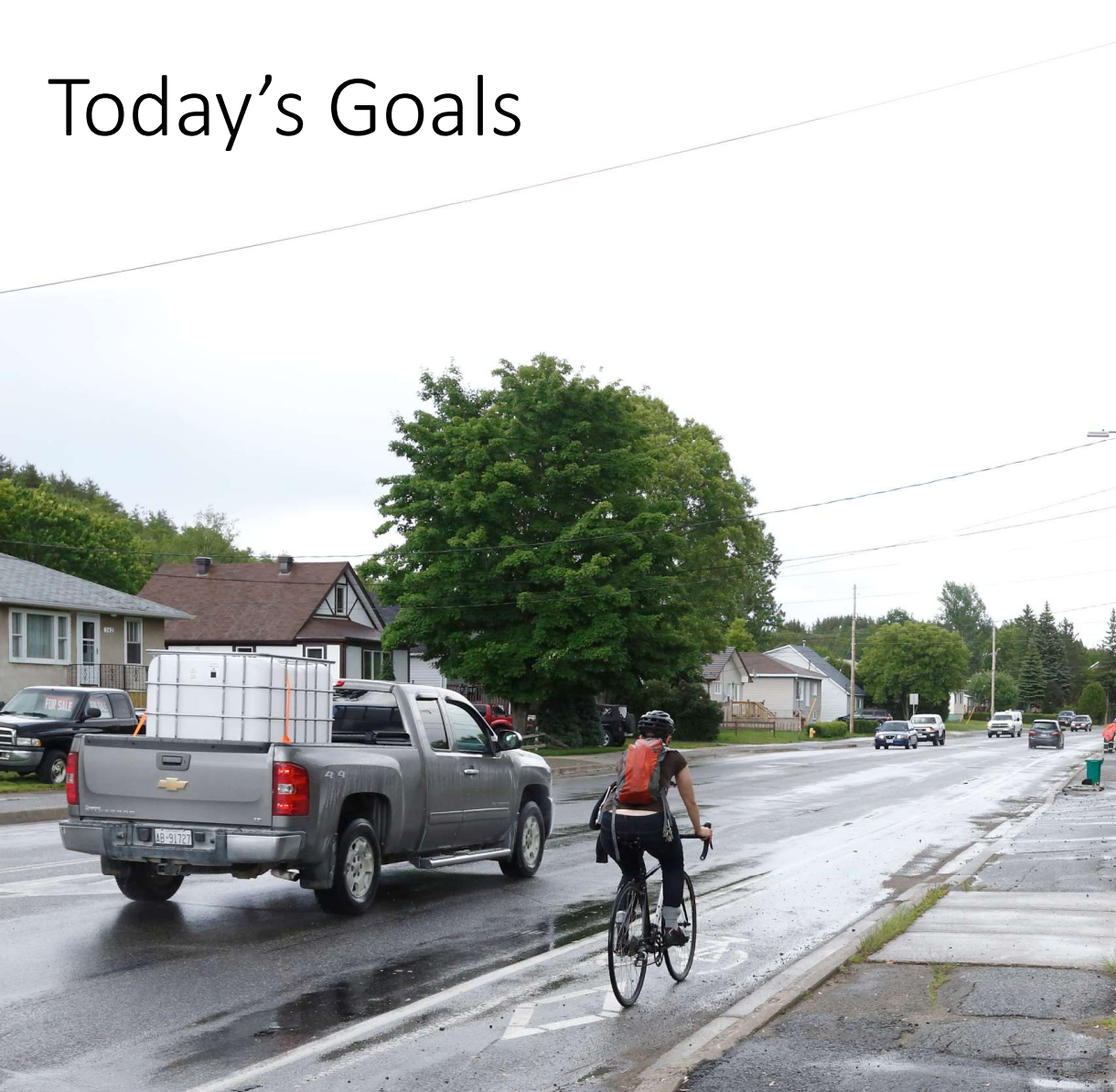


Today's Goals

Get a sense for what energy and emissions actions are happening

Develop vision elements for the project

Discuss the merits of some potential actions

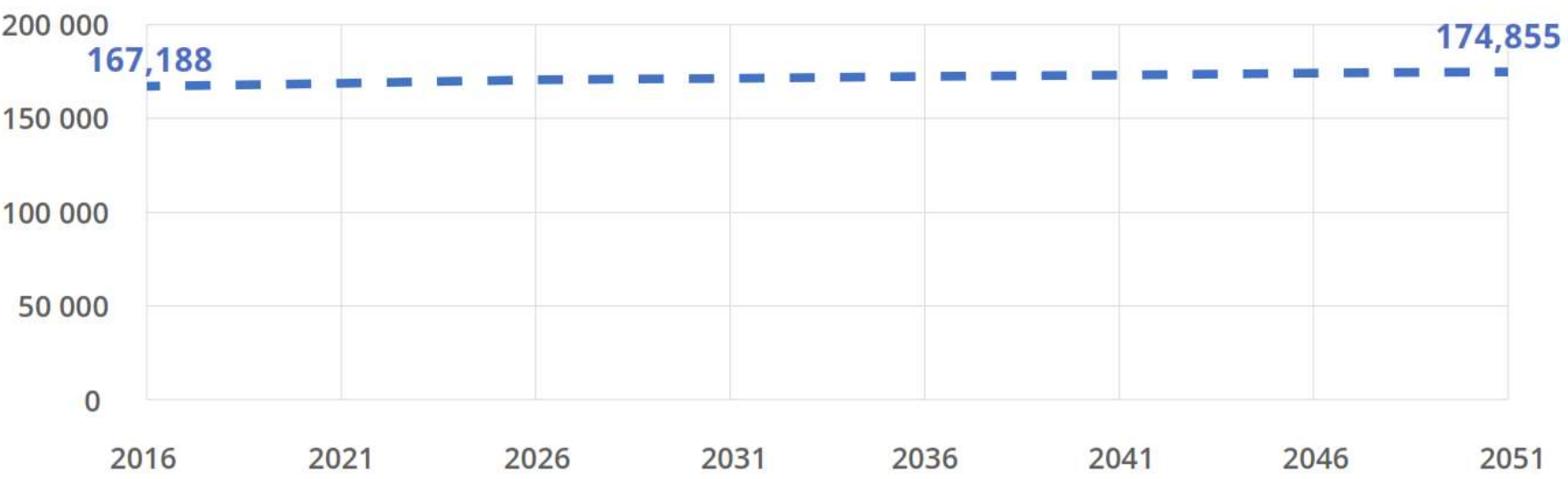


Your Stories

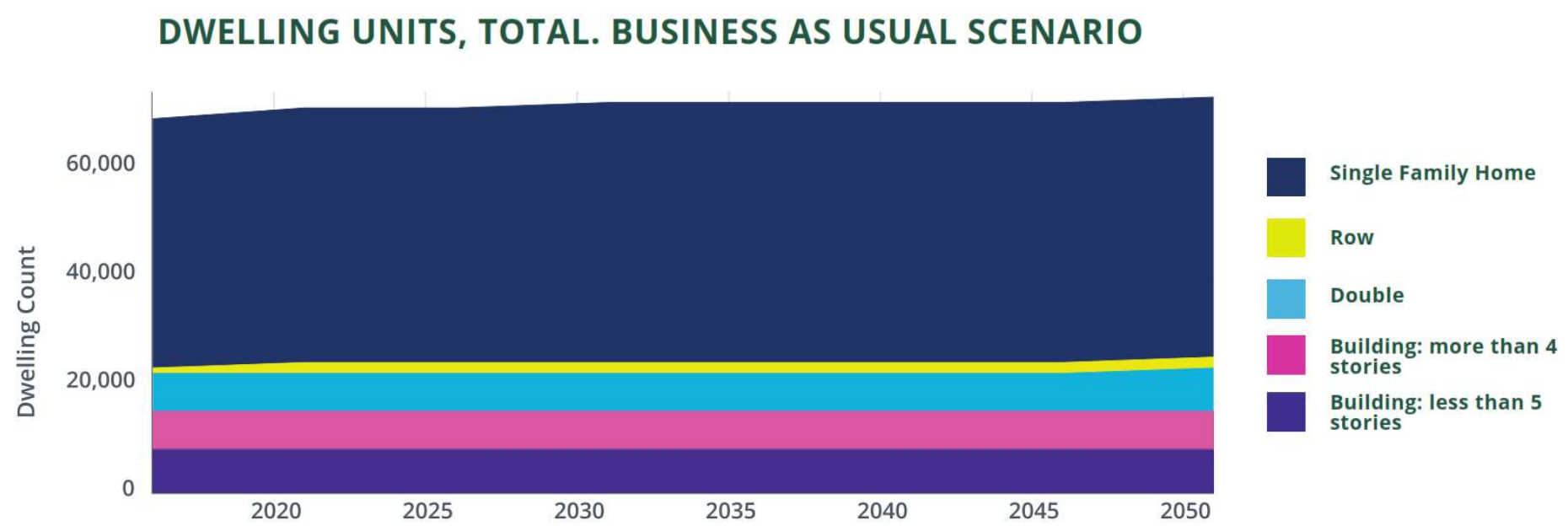


Energy & Emissions Overview

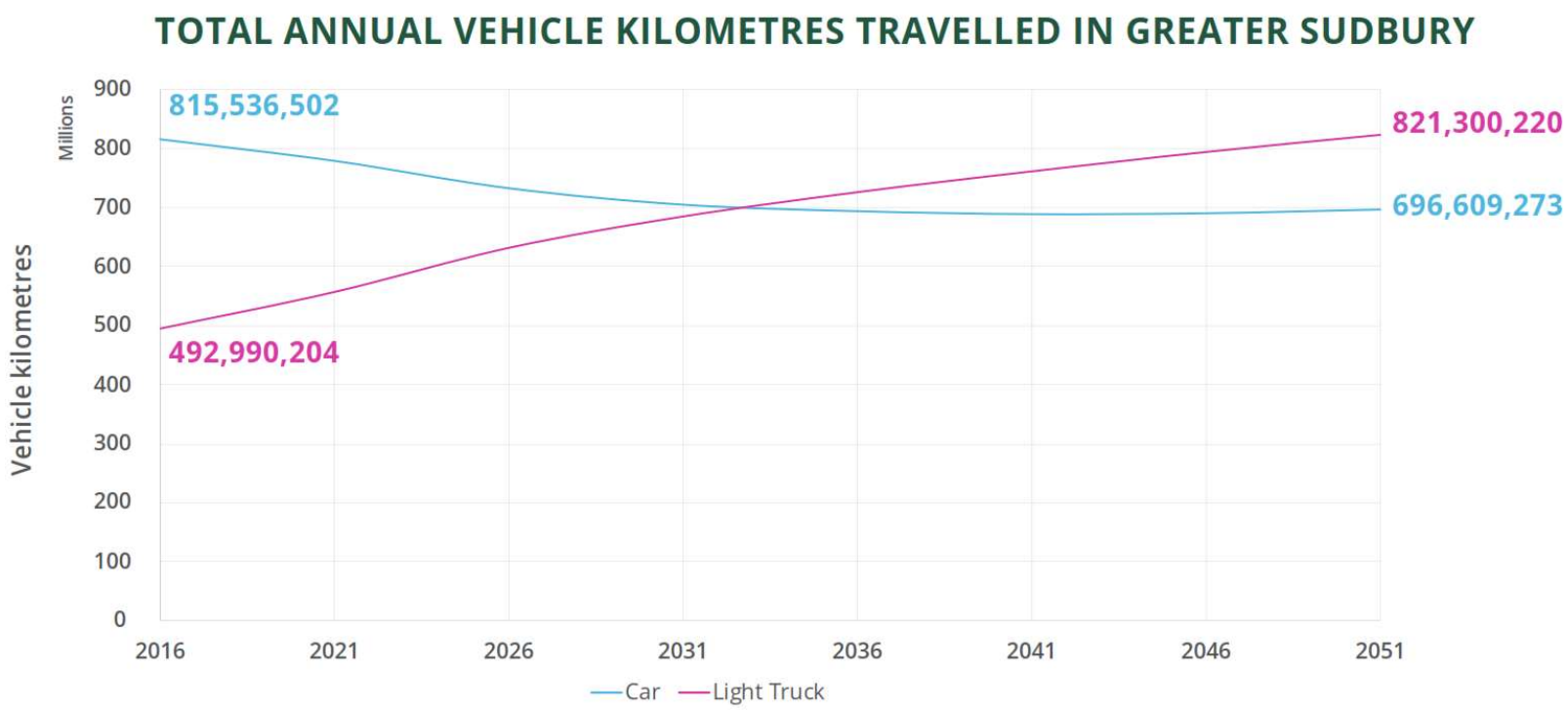
ESTIMATED POPULATION, 2016-2051



Energy & Emissions Overview

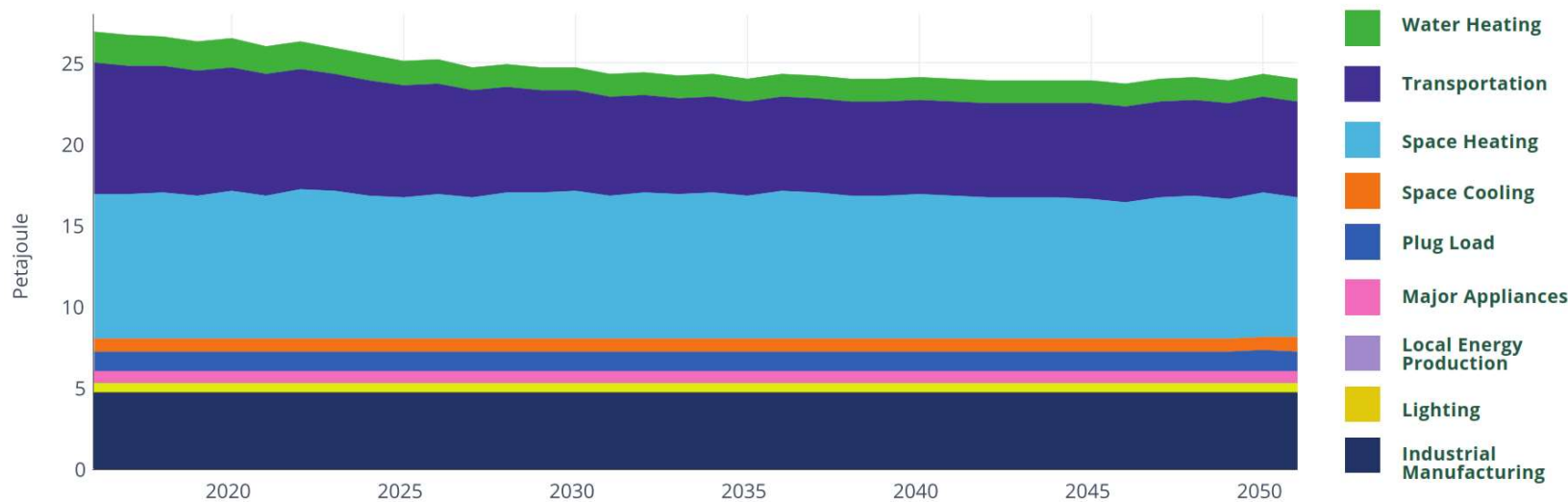


Energy & Emissions Overview



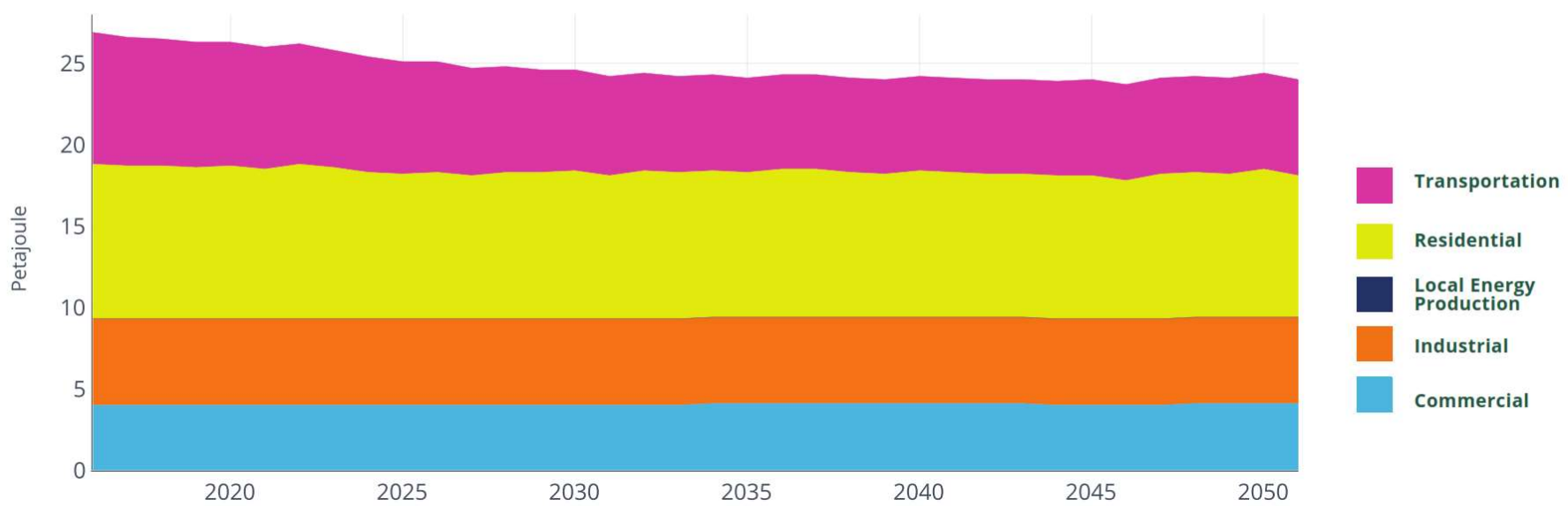
Energy & Emissions Overview

ENERGY USE BY END USE



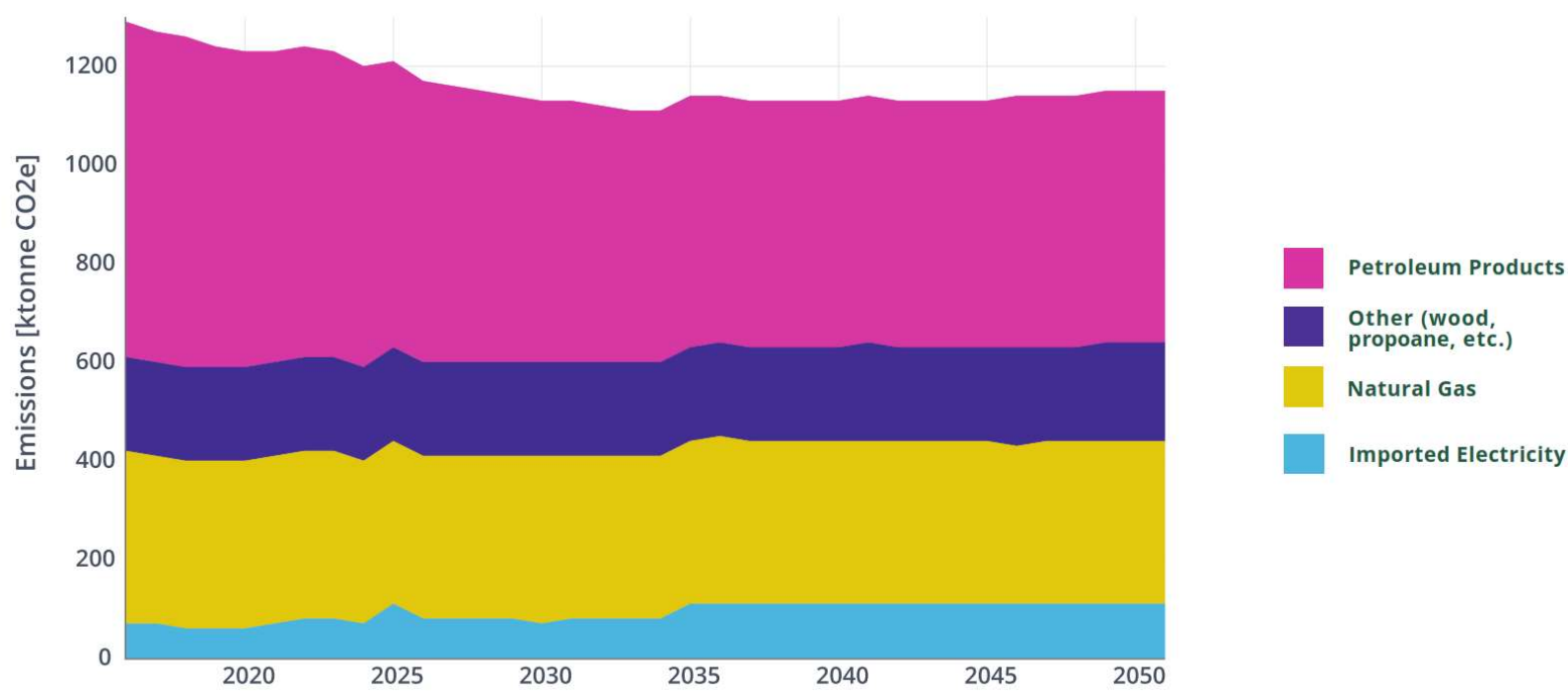
Energy & Emissions Overview

ENERGY USE BY SECTOR



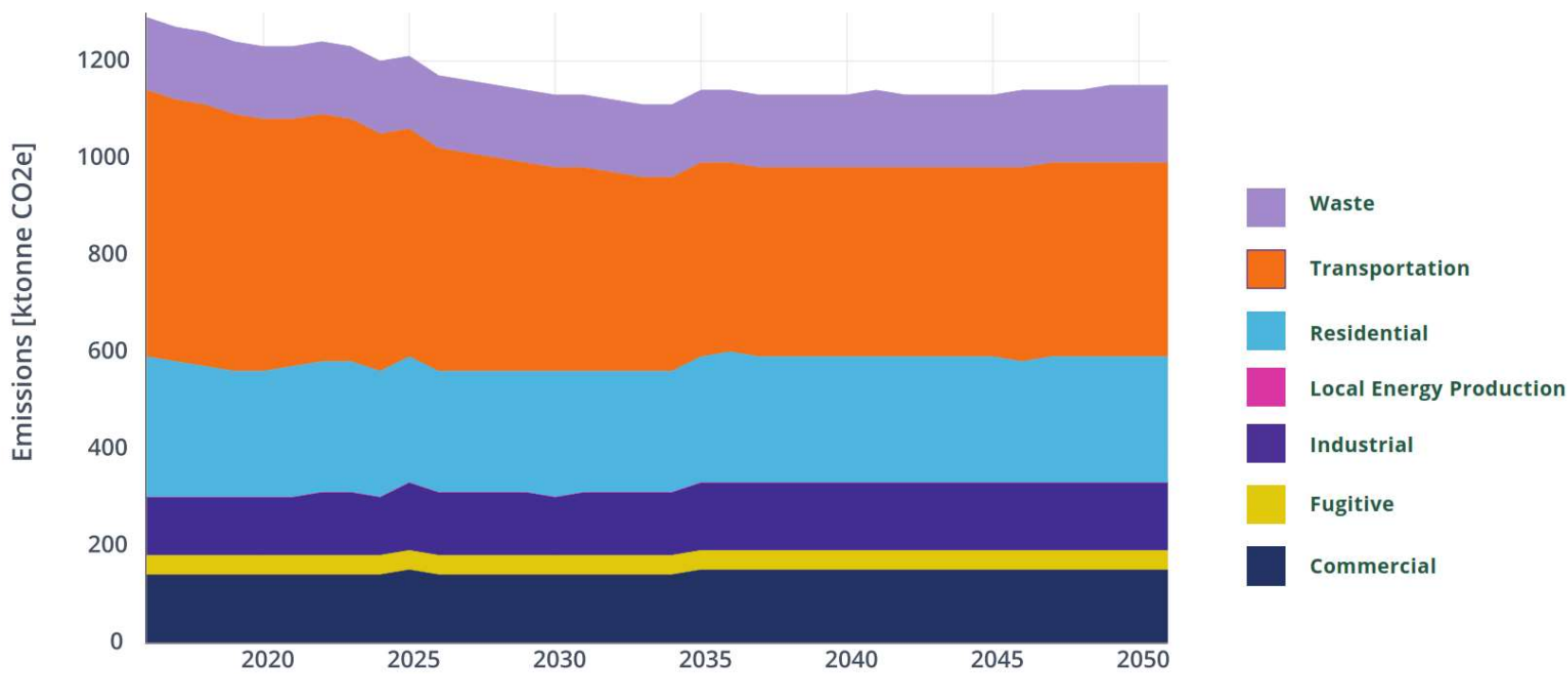
Energy & Emissions Overview

EMISSIONS BY FUEL TYPE



Energy & Emissions Overview

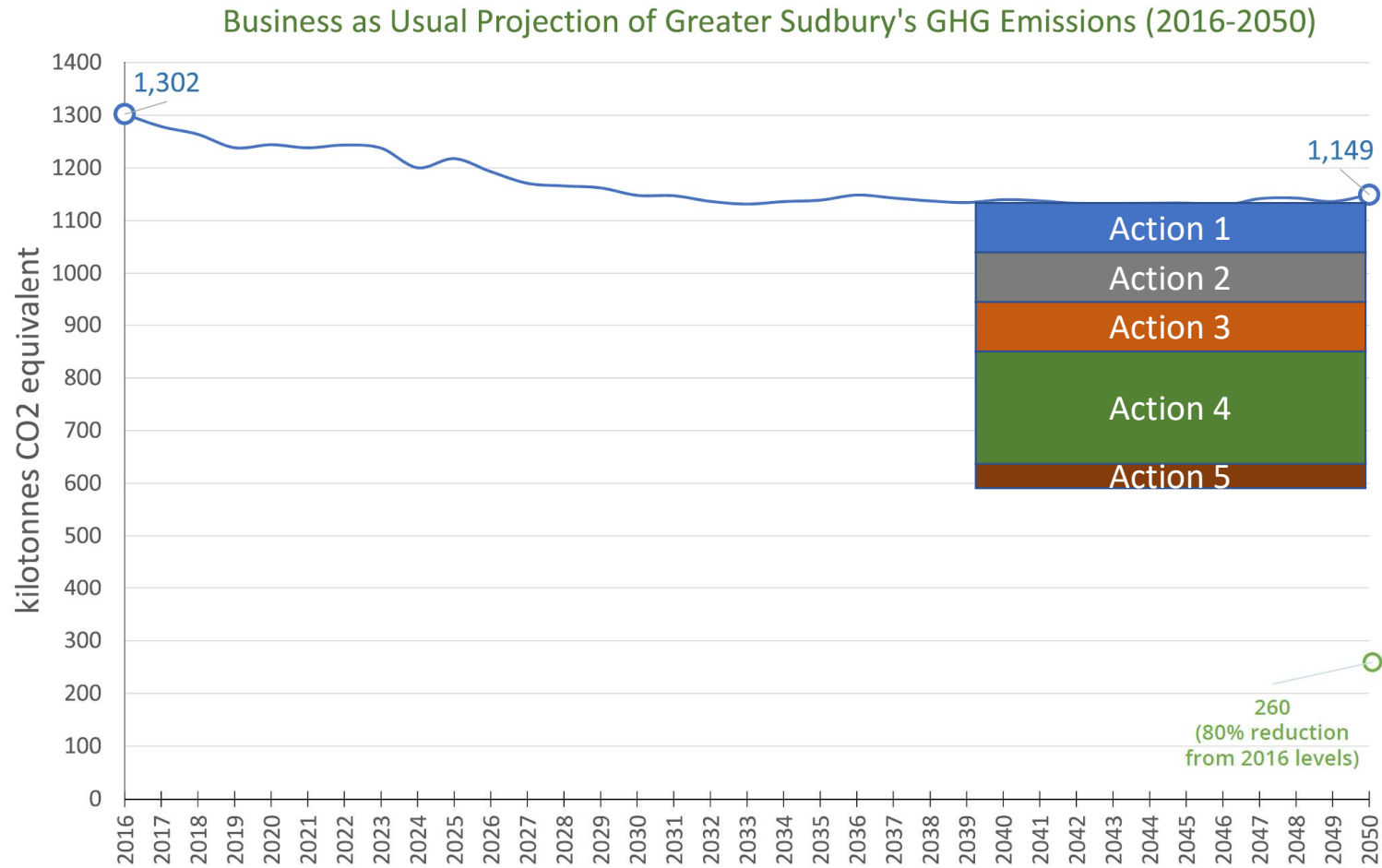
EMISSIONS BY SECTOR



Greater Sudbury in 2050



Actions Exercise



Next Steps

Develop energy and emissions scenarios to model

Energy and economic analysis

Public priorities workshop (Nov-Dec)





POWER[↑]**NOW**
GREATER SUDBURY
Our energy future.   

Over To You