

LEGEND

- ROAD
- LOT LINE
- WATERCOURSE & WATERBODY
- MINOR CONTOUR (2m)
- MAJOR CONTOUR (10m)
- EXISTING REGULATORY FLOODLINE (NDCA)
- PRELIMINARY 2YR FLOODLINE (HEC-RAS)
- PRELIMINARY 100YR FLOODLINE (HEC-RAS)
- PRELIMINARY TIMMINS FLOODLINE (HEC-RAS)
- CONCEPTUAL SWM FACILITY CONTOUR

REV	DATE	ISSUE/REVISION DESCRIPTION	ENG.

City of Greater Sudbury

Wood Environment & Infrastructure Solutions

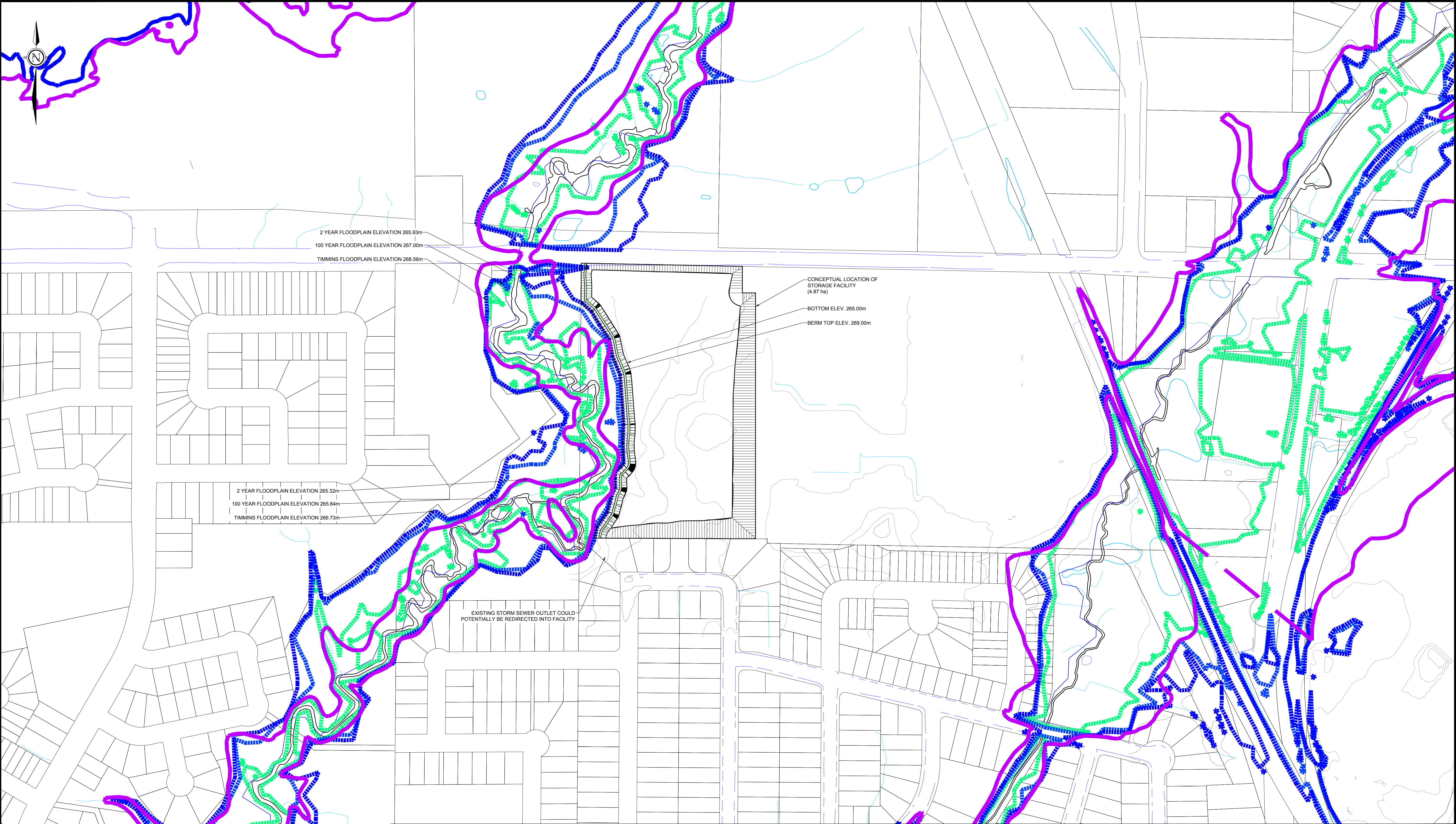
131 Fielding Road
Lively, Ontario
P3Y 1L7
705-682-2632

DRAWN BY:	KMR
REVIEWED BY:	MDO
APPROVED BY:	

PROJECT: JUNCTION CREEK SUBWATERSHED STUDY
SUDBURY, ONTARIO

TITLE: OPTION B1 - TWIN FORKS STORMWATER MANAGEMENT FACILITY
CONCEPT PLAN

PROJECT NO.:	TY161021
REVISION NO.:	
DATE:	DEC. 2018
SCALE:	1:2,000
DRAWING NO.:	C11.2a



LEGEND

- ROAD
- LOT LINE
- WATERCOURSE & WATERBODY
- MINOR CONTOUR (2m)
- MAJOR CONTOUR (10m)
- EXISTING REGULATORY FLOODLINE (NDCA)
- PRELIMINARY 2YR FLOODLINE (HEC-RAS)
- PRELIMINARY 100YR FLOODLINE (HEC-RAS)
- PRELIMINARY TIMMINS FLOODLINE (HEC-RAS)
- CONCEPTUAL SWM FACILITY CONTOUR

REV	DATE	ISSUE/REVISION DESCRIPTION	ENG.

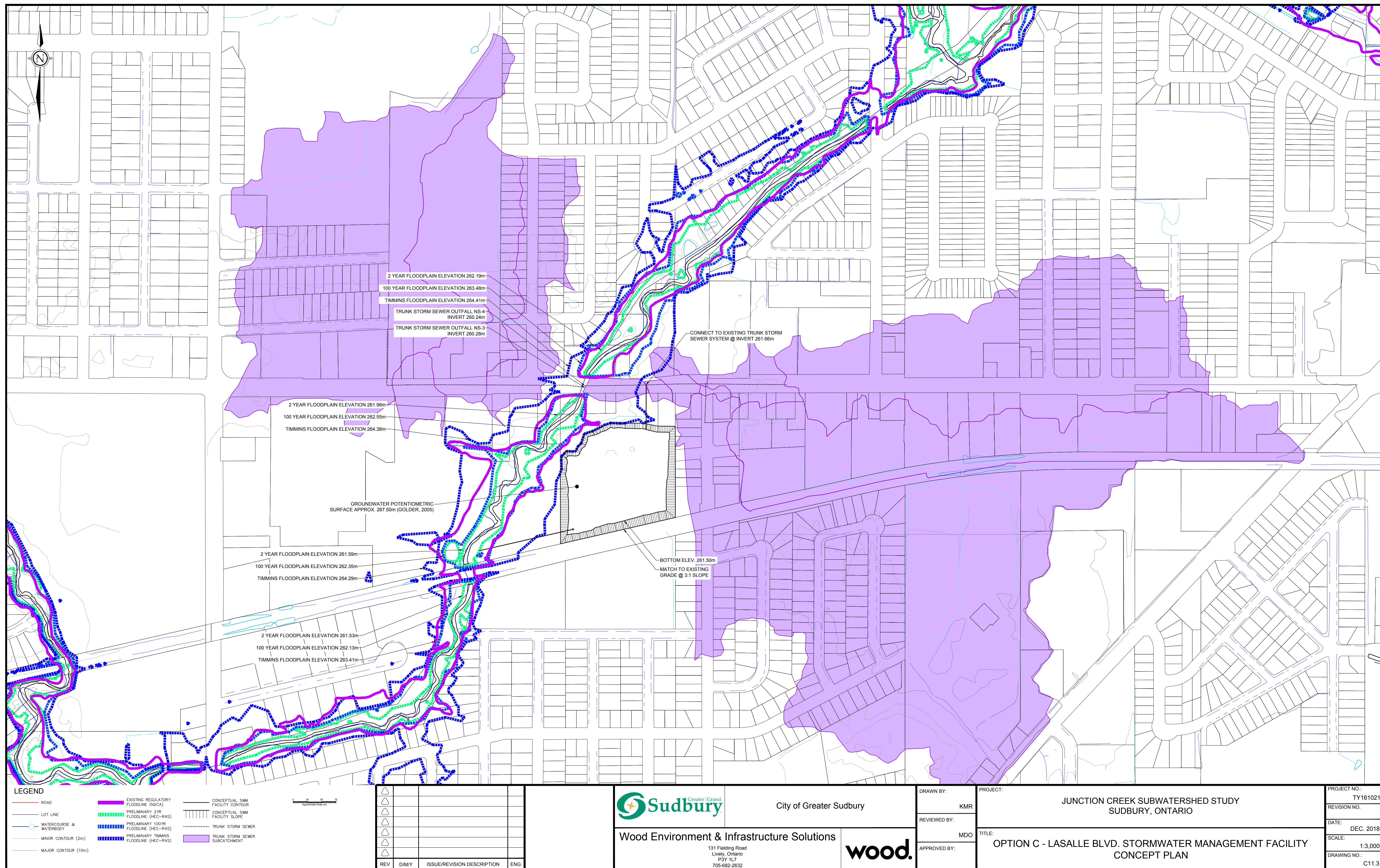
City of Greater Sudbury

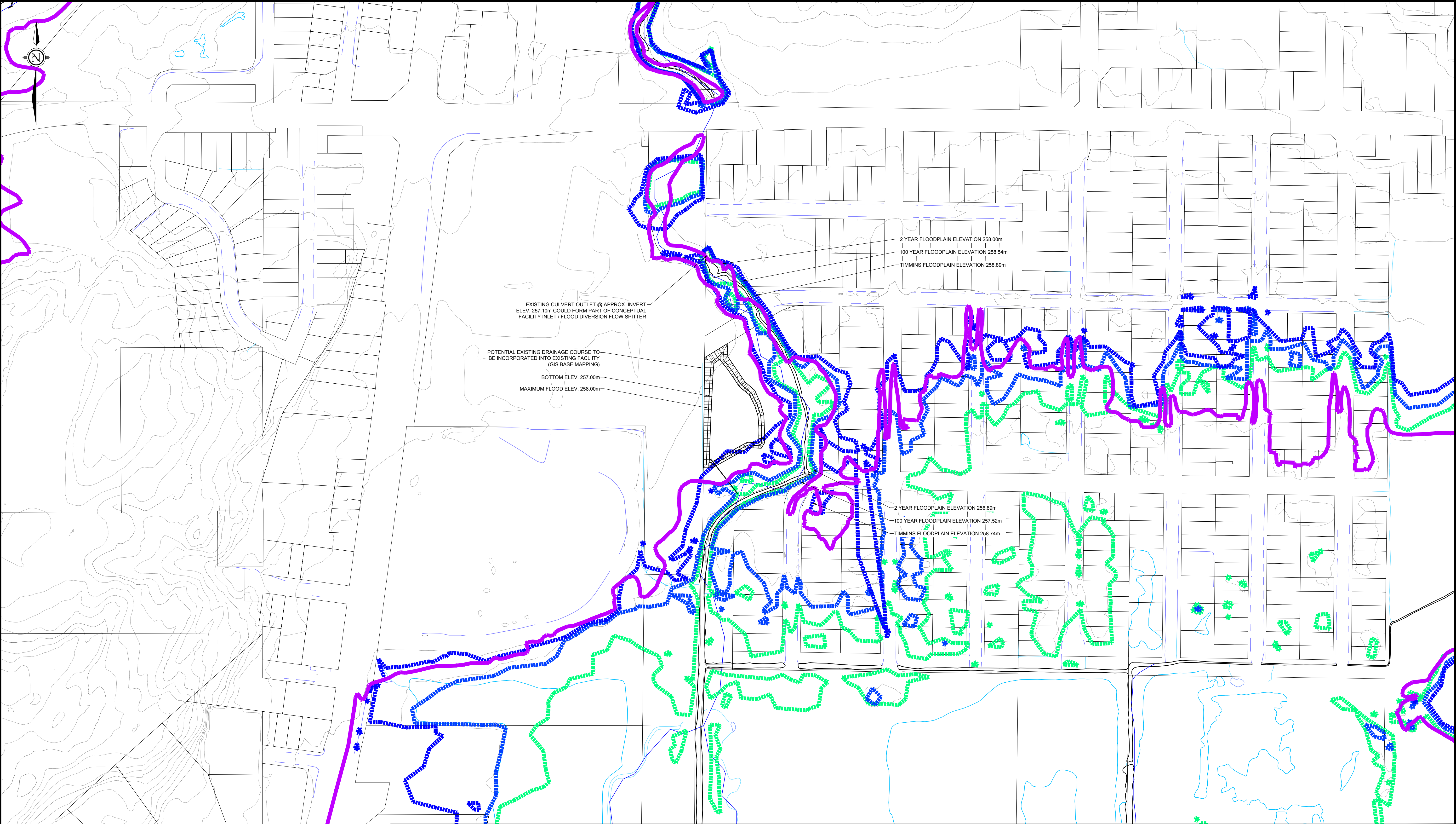
Wood Environment & Infrastructure Solutions

131 Fielding Road
Lively, Ontario
P3Y 1L7
705-682-2632

DRAWN BY: KMR	PROJECT: JUNCTION CREEK SUBWATERSHED STUDY SUDBURY, ONTARIO
REVIEWED BY: MDO	TITLE: OPTION B2 - MALEY BRANCH STORMWATER MANAGEMENT FACILITY CONCEPT PLAN
APPROVED BY:	

PROJECT NO.: TY161021
REVISION NO.
DATE: DEC. 2018
SCALE: 1:2,000
DRAWING NO.: C11.2b





LEGEND

ROAD

LOT LINE

WATERCOURSE & WATERBODY

MINOR CONTOUR (2m)

MAJOR CONTOUR (10m)

HIGHLIGHTED CONTOUR

EXISTING REGULATORY FLOODLINE (NDCA)

PRELIMINARY 2YR FLOODLINE

PRELIMINARY 100YR FLOODLINE

PRELIMINARY TIMMINS FLOODLINE

OVERALL HYDROLOGIC SUBCATCHMENT BOUNDARY

CONCEPTUAL SWM FACILITY CONTOUR

0 25 50 75

Approximate Scale (m)

△				
△				
△				
△				
△				
△				
△				
△				
REV	DATE	ISSUE/REVISION DESCRIPTION	ENG.	

City of Greater Sudbury

Wood Environment & Infrastructure Solutions

131 Fielding Road
Lively, Ontario
P3Y 1L7
705-682-2632

DRAWN BY:

KMR

REVIEWED BY:

MDO

APPROVED BY:

PROJECT:

JUNCTION CREEK SUBWATERSHED STUDY
SUDBURY, ONTARIO

TITLE:

OPTION D - NICKELDALE STORMWATER MANAGEMENT FACILITY
CONCEPT PLAN

PROJECT NO.: TY161021

REVISION NO.:

DATE: DEC. 2018

SCALE: 1:1,000

DRAWING NO.: C11.4

