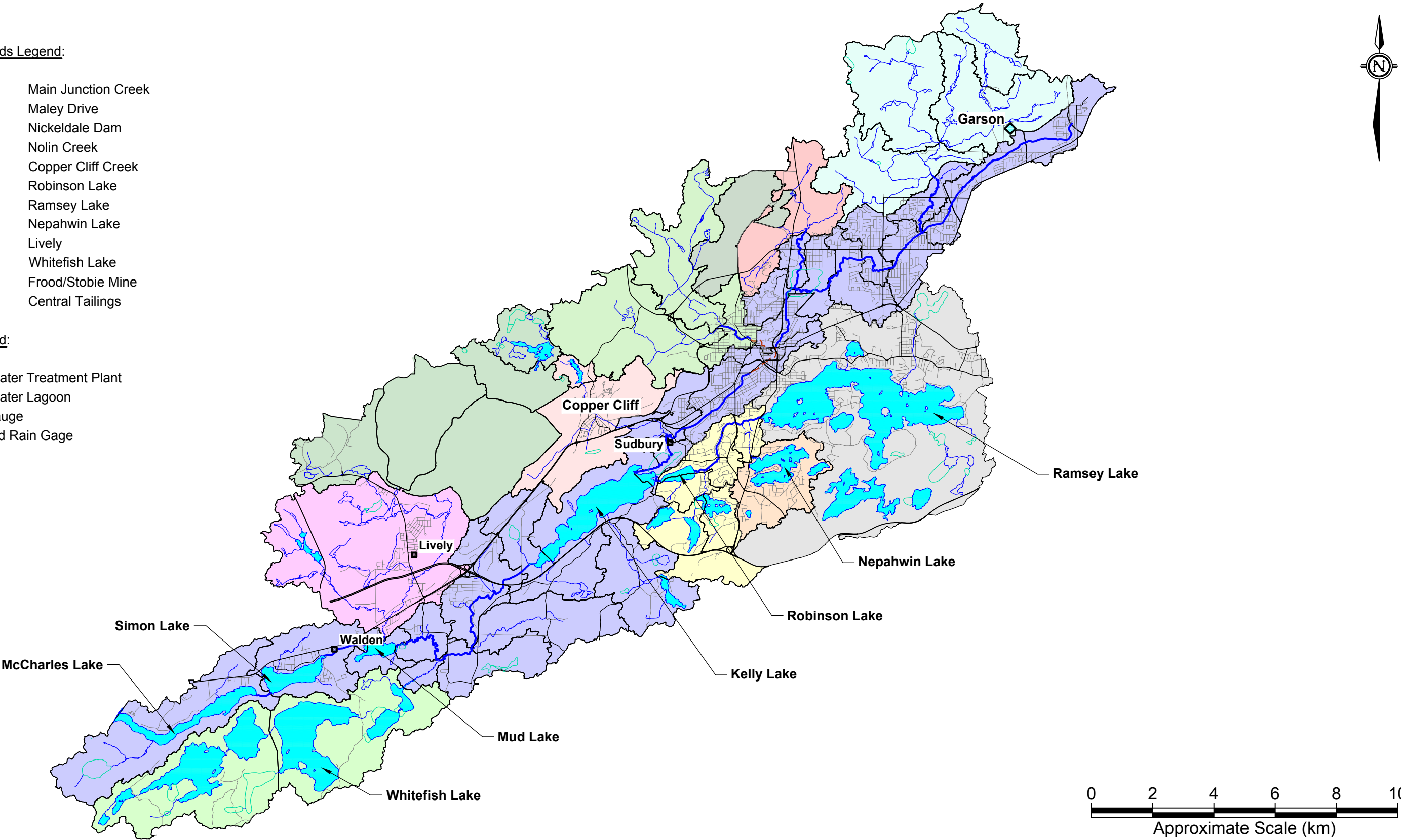


Sub-Watersheds Legend:

- 1 Main Junction Creek
- 2 Maley Drive
- 3 Nickeldale Dam
- 4 Nolin Creek
- 5 Copper Cliff Creek
- 6 Robinson Lake
- 7 Ramsey Lake
- 8 Nepahwin Lake
- 9 Lively
- 10 Whitefish Lake
- 11 Frood/Stobie Mine
- 12 Central Tailings

Symbol Legend:

- Wastewater Treatment Plant
- Wastewater Lagoon
- Flow Gauge
- Flow and Rain Gage



**Note:**  
Land Use shapefiles retrieved from Land Information Ontario (LIO)  
Digital Data Warehouse.



City of Greater Sudbury

Wood Environment & Infrastructure Solutions  
131 Fielding Road  
Lively, Ontario  
P3Y 1L7  
705-682-2632



DWN BY:

PROJECT

Junction Creek Subwatershed Study  
City of Greater Sudbury, Ontario

DATE

Dec. 2018

CHK'D BY:

KKJ

PROJECT No.

TY161021

MDOG

TITLE

REV. No.

1

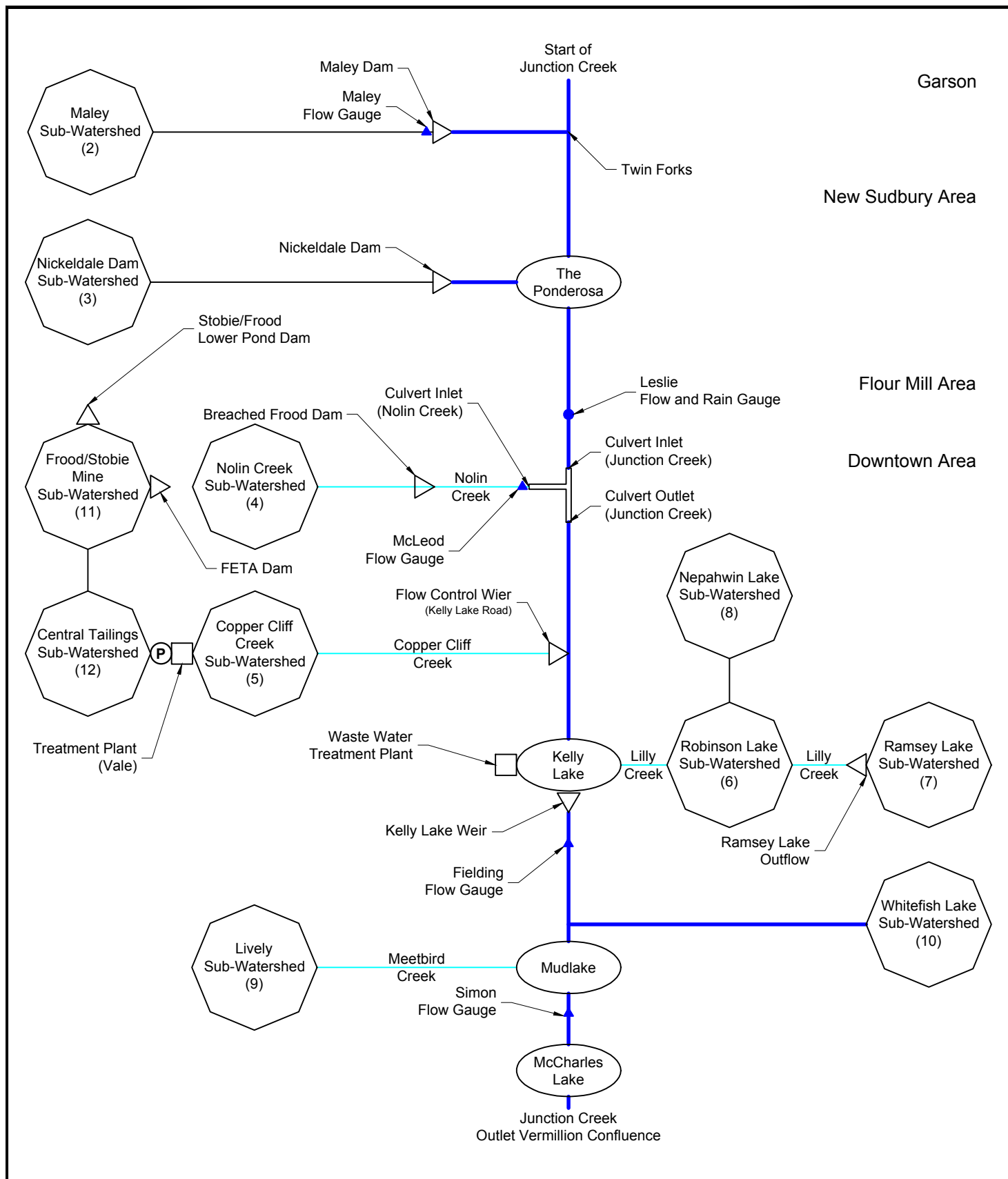
SCALE:



as shown

Subwatershed Major Delineation

FIGURE No.

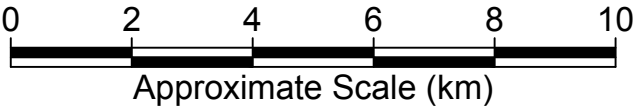
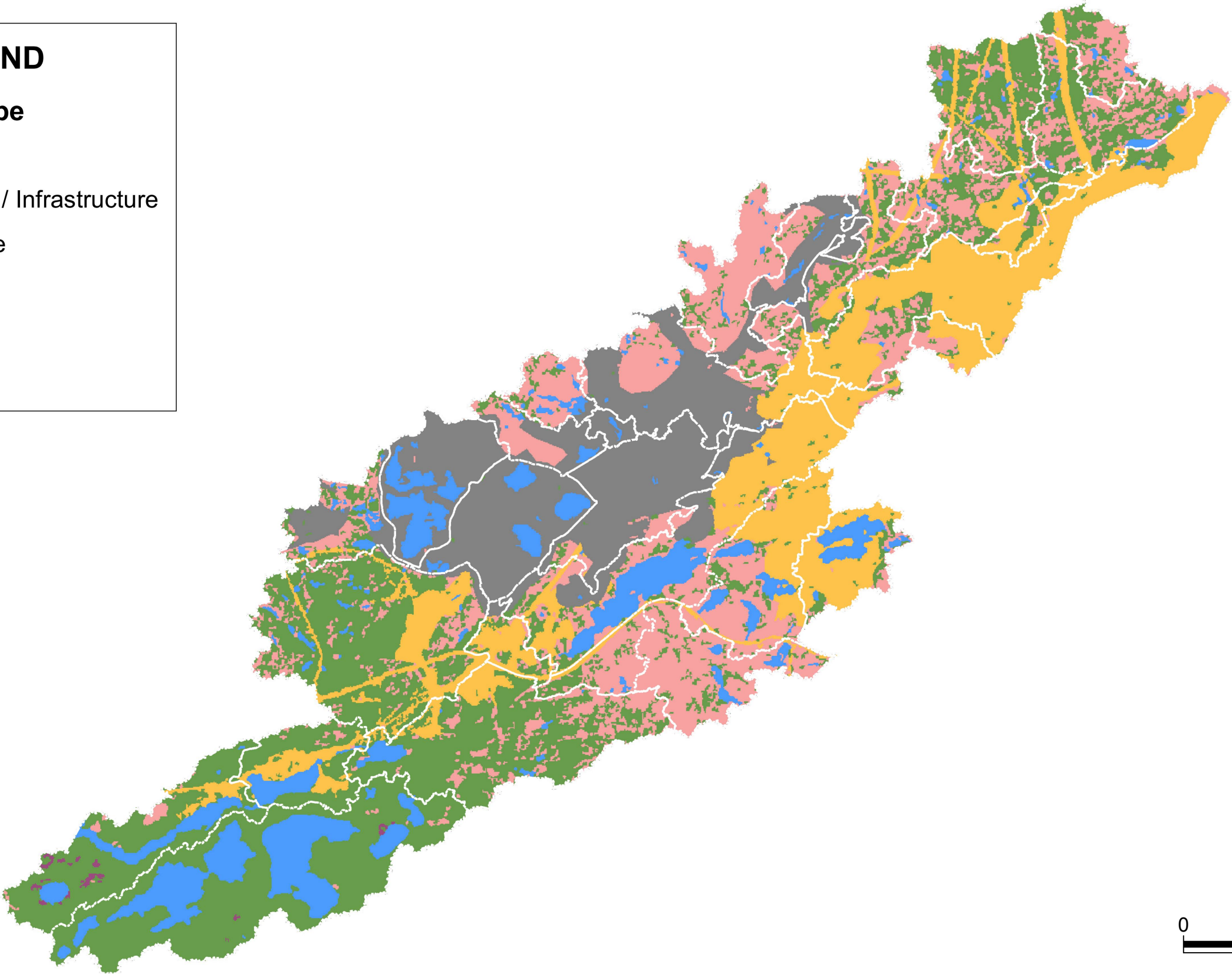
C.1



<b>Wood Environment &amp; Infrastructure Solutions</b> 131 Fielding Road Lively, Ontario P3Y 1L7 705-682-2632		 		<b>City of Greater Sudbury</b>	
<b>PROJECT</b> Junction Creek Subwatershed Study City of Greater Sudbury, Ontario		<b>DWN BY:</b> KKJ		<b>CHK'D BY:</b> MDOG	
		<b>REV. NO.:</b> 1		<b>SCALE:</b> not ot scale	
<b>TITLE</b> Subwatershed Flow Schematic		<b>DATE:</b> Dec 2018		<b>PROJECT NO:</b> TY161021	
		<b>FIGURE NO:</b> C.2			

LEGEND

- Land Cover Type
- Water
  - Settlement / Infrastructure
  - Mine Waste
  - Bedrock
  - Forest
  - Bog



**Note:**  
Land Use shapefiles retrieved from Land Information Ontario (LIO)  
Digital Data Warehouse.



City of Greater Sudbury

Wood Environment & Infrastructure Solutions  
131 Fielding Road  
Lively, Ontario  
P3Y 1L7  
705-682-2632



DWN BY:

PROJECT

Junction Creek Subwatershed Study  
City of Greater Sudbury, Ontario

DATE

Dec. 2018

CHK'D BY:

KKJ

PROJECT No.

TY161021

MDOG

TITLE

Subwatershed Land Cover

REV. No.

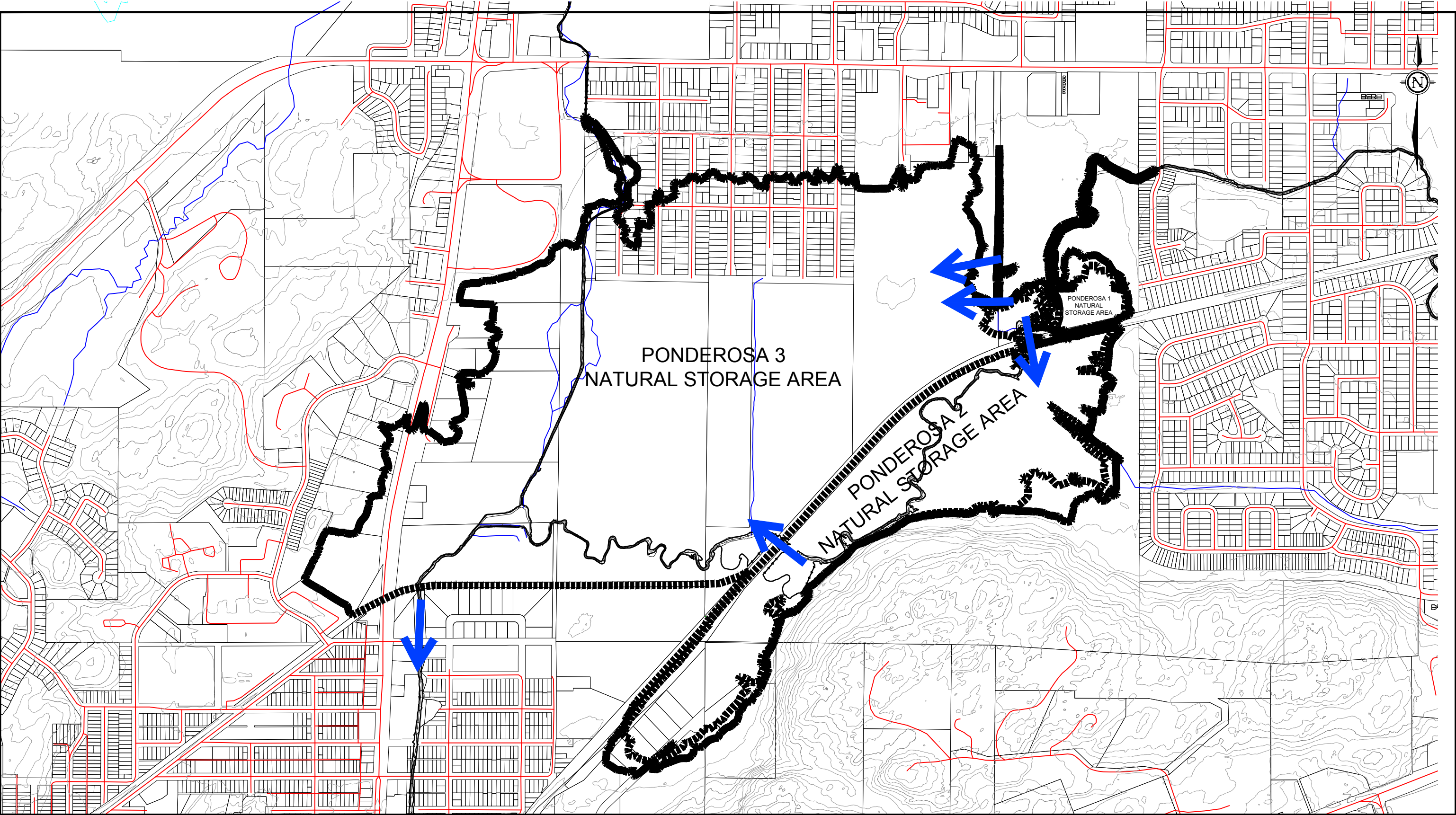
1

FIGURE No.

C.3

SCALE:  
not to scale





<div><div><div></div></div><div>ROAD</div></div> <div><div></div></div> <div>LOT LINE</div> <div><div><div></div></div><div>WATERCOURSE &amp; WATERBODY</div></div> <div><div></div></div> <div>MINOR CONTOUR (2m)</div> <div><div></div></div> <div>MAJOR CONTOUR (10m)</div>	<div><div><div></div></div><div>BOUNDARY OF CONCEPTUAL HYDRAULIC STORAGE AREA</div></div> <div><div><div></div></div><div>CONCEPTUAL MOVEMENT OF WATER</div></div>	<div><div><div><div><div></div><div>Sudbury</div><div>Greater Grand</div></div></div><div>City of Greater Sudbury</div></div></div>	<div><div>DWN BY:</div><div>KMR</div></div>	<div><div>PROJECT</div><div>Junction Creek Subwatershed Study City of Greater Sudbury, Ontario</div></div>	<div><div>DATE</div><div>Dec. 2018</div></div>
		<div><div>Wood Environment &amp; Infrastructure Solutions</div><div>131 Fielding Road Lively, Ontario P3Y 1L7 705-682-2632</div></div>	<div><div>CHK'D BY:</div><div>MDOG</div></div>	<div><div>TITLE</div><div>Ponderosa Natural Storage Areas</div></div>	<div><div>PROJECT No.</div><div>TY161021</div></div>
			<div><div>SCALE:</div><div>1:10,000</div></div>		<div><div>REV. No.</div><div>1</div></div>
					<div><div>FIGURE No.</div><div>C.4</div></div>



