

LEGEND

- ROAD
- LOT LINE
- WATERCOURSE & WATERBODY
- MINOR CONTOUR (2m)
- MAJOR CONTOUR (10m)
- EXISTING REGULATORY FLOODLINE (NDCA)
- PRELIMINARY 2YR FLOODLINE (HEC-RAS)
- PRELIMINARY 100YR FLOODLINE (HEC-RAS)
- PRELIMINARY TIMMINS FLOODLINE (HEC-RAS)
- CONCEPTUAL SWM FACILITY CONTOUR

0 25 50 75
Approximate Scale (m)

△			
△			
△			
△			
△			
△			
△			
△			
REV	DATE	ISSUE/REVISION DESCRIPTION	ENG.



City of Greater Sudbury

Wood Environment & Infrastructure Solutions

131 Fielding Road
Lively, Ontario
P3Y 1L7
705-682-2632



DRAWN BY: KMR

REVIEWED BY: MDO

APPROVED BY:

PROJECT: JUNCTION CREEK SUBWATERSHED STUDY
SUDBURY, ONTARIO

TITLE: OPTION B1 - TWIN FORKS STORMWATER MANAGEMENT FACILITY
CONCEPT PLAN

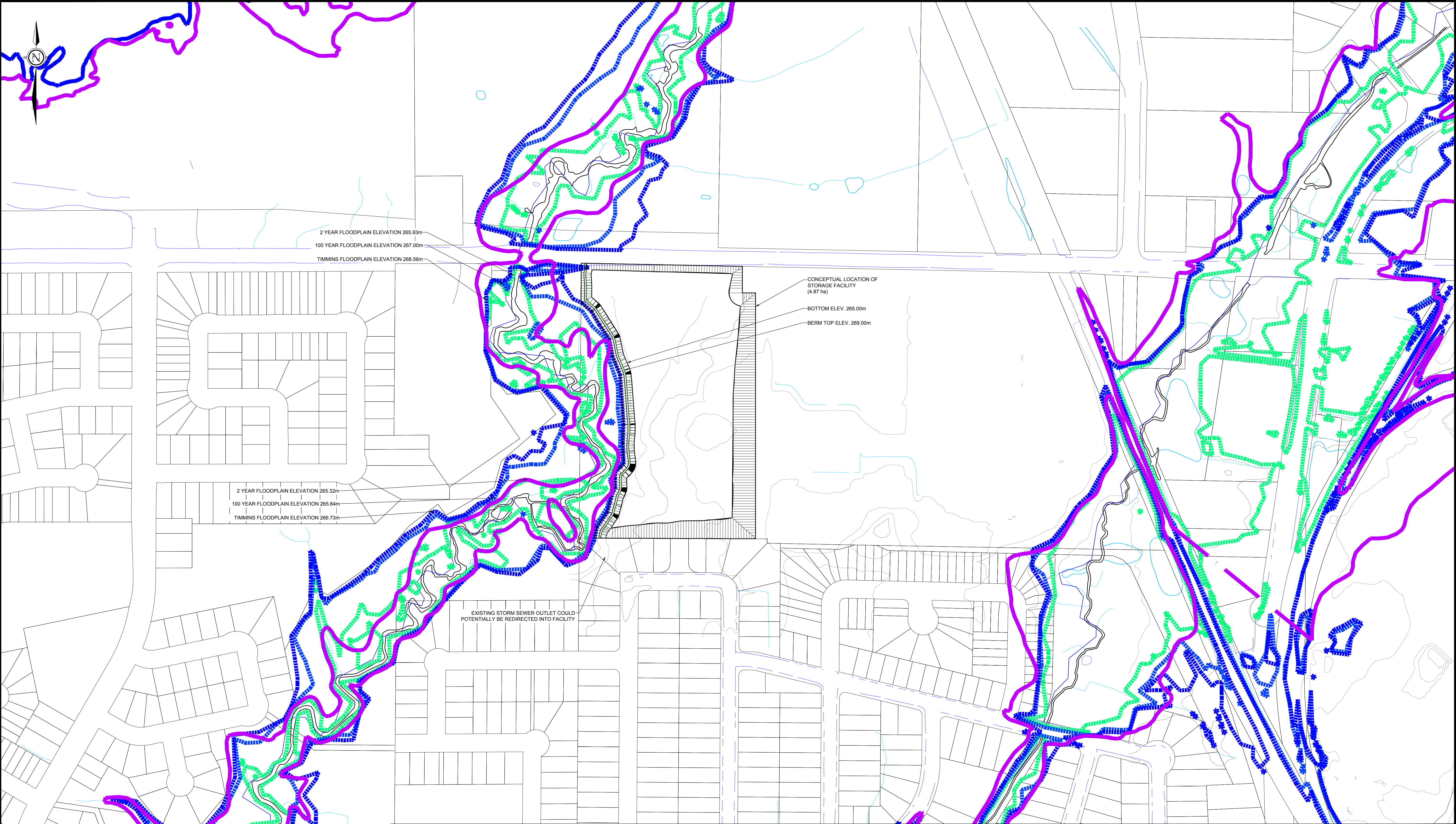
PROJECT NO.: TY161021

REVISION NO.

DATE: DEC. 2018

SCALE: 1:2,000

DRAWING NO.: C11.2a



LEGEND

- ROAD
- LOT LINE
- WATERCOURSE & WATERBODY
- MINOR CONTOUR (2m)
- MAJOR CONTOUR (10m)
- EXISTING REGULATORY FLOODLINE (NDCA)
- PRELIMINARY 2YR FLOODLINE (HEC-RAS)
- PRELIMINARY 100YR FLOODLINE (HEC-RAS)
- PRELIMINARY TIMMINS FLOODLINE (HEC-RAS)
- CONCEPTUAL SWM FACILITY CONTOUR

0 25 50 75
Approximate Scale (m)

△			
△			
△			
△			
△			
△			
△			
△			
REV	DATE	ISSUE/REVISION DESCRIPTION	ENG.



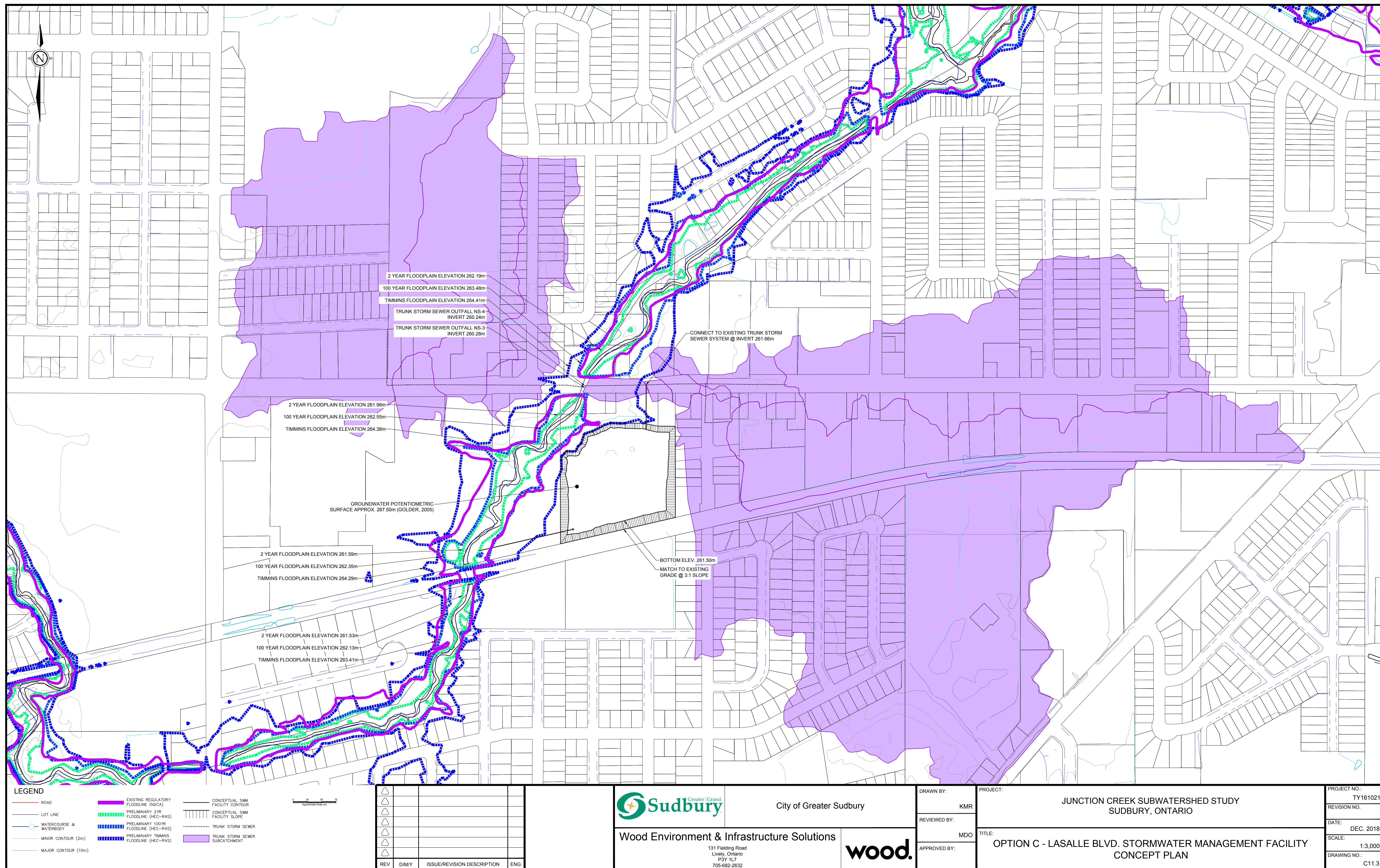
City of Greater Sudbury

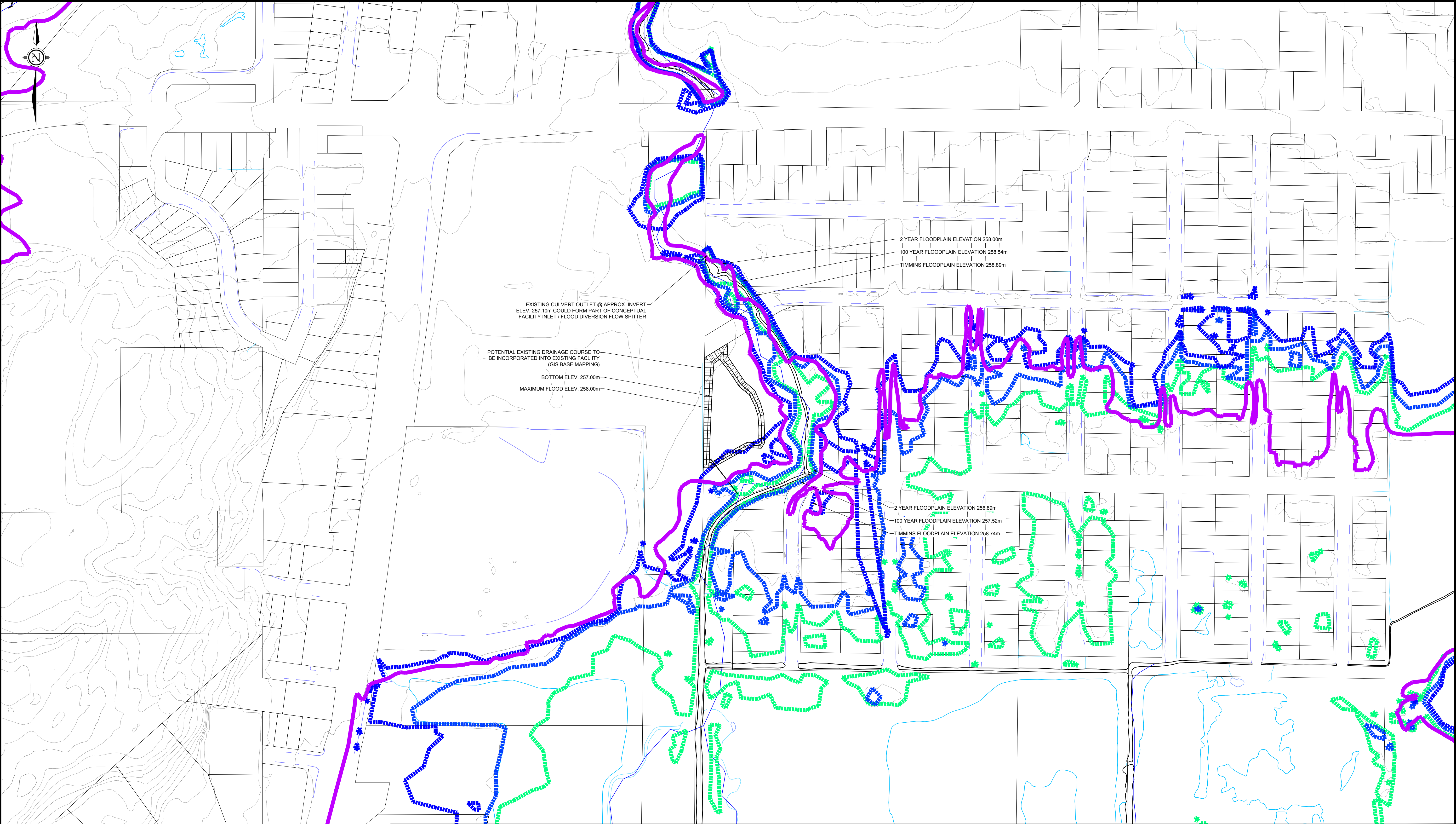
Wood Environment & Infrastructure Solutions

131 Fielding Road
Lively, Ontario
P3Y 1L7
705-682-2632



DRAWN BY: KMR	PROJECT: JUNCTION CREEK SUBWATERSHED STUDY SUDBURY, ONTARIO	PROJECT NO.: TY161021
REVIEWED BY: MDO	TITLE: OPTION B2 - MALEY BRANCH STORMWATER MANAGEMENT FACILITY CONCEPT PLAN	REVISION NO.:
APPROVED BY:		DATE: DEC. 2018
		SCALE: 1:2,000
		DRAWING NO.: C11.2b





LEGEND

ROAD

LOT LINE

WATERCOURSE & WATERBODY

MINOR CONTOUR (2m)

MAJOR CONTOUR (10m)

HIGHLIGHTED CONTOUR

EXISTING REGULATORY FLOODLINE (NDCA)

PRELIMINARY 2YR FLOODLINE

PRELIMINARY 100YR FLOODLINE

PRELIMINARY TIMMINS FLOODLINE

OVERALL HYDROLOGIC SUBCATCHMENT BOUNDARY

CONCEPTUAL SWM FACILITY CONTOUR

0 25 50 75
Approximate Scale (m)

REV	DATE	ISSUE/REVISION DESCRIPTION	ENG.

Greater Sudbury

City of Greater Sudbury

Wood Environment & Infrastructure Solutions

131 Fielding Road
Lively, Ontario
P3Y 1L7
705-682-2632

DRAWN BY:
KMR

REVIEWED BY:
MDO

APPROVED BY:

PROJECT:
JUNCTION CREEK SUBWATERSHED STUDY
SUDBURY, ONTARIO

TITLE:
OPTION D - NICKELDALE STORMWATER MANAGEMENT FACILITY
CONCEPT PLAN

PROJECT NO.:
TY161021

REVISION NO.:

DATE:
DEC. 2018

SCALE:
1:1,000

DRAWING NO.:
C11.4

