

Plan your escape today...  
Your life may depend on it tomorrow



# HOME SAFE HOME

FIRE SAFETY PROGRAM

Family Activity  
Home Escape Plan Exercise



City of  
Greater Sudbury  
Fire Services  
Our Family Cares  
About Your Family





## ***Plan Your Escape Today...*** ***Your Life May Depend On It Tomorrow.***



Anyone who has lived through a fire will tell you how terrifying it is. Sadly, sometimes people don't live to talk about it. We know, because we see the tragic results of fire every day.

Often the victims of fire need not have perished. They did because they did not react quickly enough or because they were not alerted in time to escape. Smoke alarms alert you and are required by law on every storey of your home and outside sleeping areas.

Although schools conduct regular fire drills, most fatal fires happen at home. It is critical to develop an effective home fire escape plan and practice it regularly. This will ensure that if a fire happens, everyone will know exactly what to do.

In more cases than we'd like to remember, help or escape was on the other side of the door, or at the opposite end of a corridor. Lives were lost because people either didn't know or couldn't find their way out of the burning building. Don't let this happen to you or your loved ones. Use the grid sheet inside this booklet and the accompanying fire safety checklist to eliminate fire hazards and plan your escape route.



### **Prepare A Home Fire Escape Plan Today....**

- 1. Does your family have a fire escape plan? Yes  No
- 2. Is the plan practiced regularly? Yes  No
- 3. Does your home have a smoke alarm on every storey? Yes  No
- 4. Are they tested once a month? Yes  No
- 5. Does your family have a safe place to meet outside of your home? Yes  No
- 6. Do you check regularly for fire hazards? Yes  No

### **Fire Safety in the Kitchen**

- 1. Is your range kept clean and free of grease? Yes  No
- 2. When cooking, do you avoid wearing loose clothing with long sleeves? Yes  No
- 3. Are you in the habit of turning pot handles inward when cooking? Yes  No
- 4. Do you keep a proper fitting lid close at hand when cooking? Yes  No

### **Electrical Safety**

- 1. Do you check electrical cords and plugs for damage and wear? Yes  No
- 2. Do you check to ensure electrical cords do not run under rugs and are not nailed in place? Yes  No
- 3. Does someone in your family make sure all unnecessary appliances are turned off or unplugged before going to bed or leaving the house?  
ie. toaster, space heater, laptop, etc. Yes  No



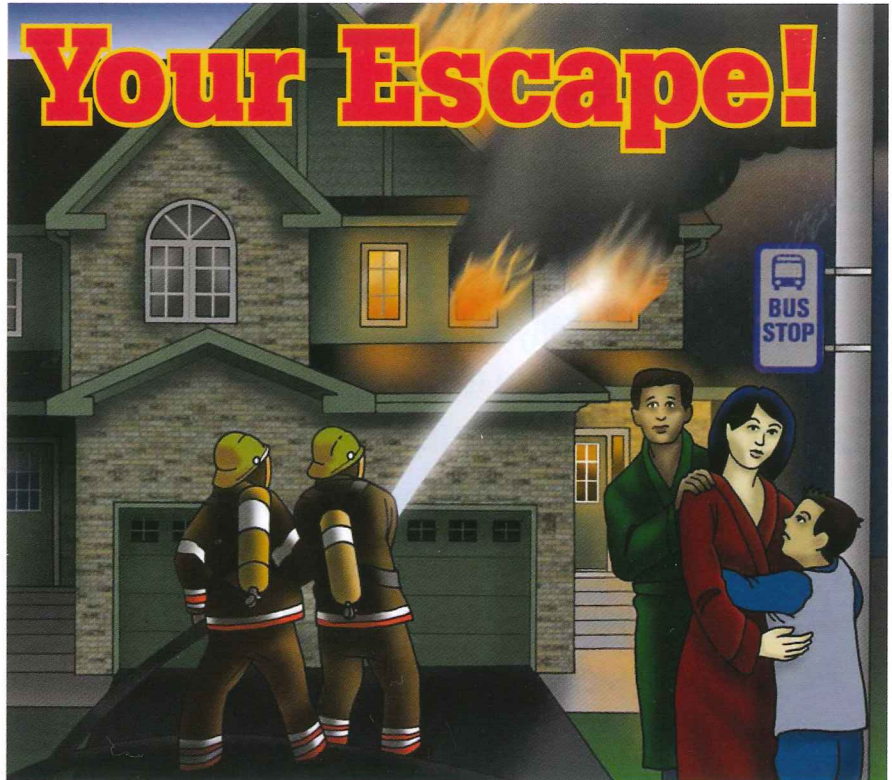
***Follow these steps,  
and keep yourself and your family  
safe from the dangers of fire.***

## **Plan Your Escape!**

**If a fire occurred in your home tonight, would your family get out safely?**

**You may have only seconds to safely escape your home.**

**Develop a home fire escape plan with everyone in your household.**



- Smoke alarms provide a precious early warning that can make the difference between living and dying in a fire. Install a smoke alarm on every storey of your home, including the basement and outside all sleeping areas.
- Heat, smoke and deadly gases rise. In the event of fire, cover your nose and mouth with a cloth and crawl to the nearest exit.
- If you plan to escape via a window, be sure to shut the door to the room before opening the window, otherwise the resulting draft could fan the fire and cut off your escape.
- Closed doors help slow the spread of fire, smoke and gasses but make sure you have an alarm inside the bedroom if you sleep with the door closed.
- In the event of fire, shout a warning and get everyone out of your home immediately. Once outside, stay out. Never go back into a burning building.
- If your clothes catch on fire, stop, drop to the ground and roll to smother the flames.

**If you need help in preparing your fire escape plan, or if you have any questions concerning fire safety, visit your nearest fire station, or phone Greater Sudbury Fire Services at 705-674-4455 ext 3743.**



## Alarms save Lives

### Carbon Monoxide (CO) Alarms

CO is the number one cause of accidental poisoning in North America. Carbon monoxide can come not only from your furnace but from gas stoves and dryers, fireplaces, wood stoves, attached garages etc. Due to the number of potential CO sources and the danger this poison presents, carbon monoxide detectors are required by the City of Greater Sudbury Carbon Monoxide Alarms Bylaw (2011-47). Purchase only those detectors recognized by ULC (Underwriters Laboratory of Canada) and bearing a ULC stamp. Ensure family members can hear the CO alarm from all sleeping areas.

When the CO alarm sounds, leave the home, do not open any windows and call 911 from outside the home. Regularly test your CO alarms according to manufacturer recommendations.

### Smoke Alarms

Most fatal fires occur at night, when people are asleep. Under these circumstances, you can be overcome by smoke and never wake up. Seconds can make the difference between life and death. Are you and your loved ones protected? Smoke alarms detect smoke in the early stages of a fire and sound a warning. Proven effective, these inexpensive, easy to install devices are either battery operated or electrically connected to household circuits.

If the smoke alarm is activated accidentally, (by cooking fumes for example) ventilate the affected area by opening a window or fanning the alarm with a newspaper. Always read the manufacturer's instructions for specific installation, maintenance and testing information. Install only ULC (Underwriters Laboratory of Canada) labeled smoke alarms. Replace or relocate smoke alarms which activate and sound continually for no apparent reason.

### Location of Alarms

Install at least one smoke alarm on every storey of your home, and outside all sleeping areas. Smoke rises, so it is important to locate alarms on the ceiling whenever possible (see manufacturer's recommendations). If you sleep with the bedroom door closed ensure there is a smoke alarm in the bedroom. Avoid placing smoke alarms in kitchens and washrooms where steam etc. can accidentally activate alarms. Another option is to install a photoelectric smoke alarm in these rooms. It is the responsibility of the landlord to provide all rental units with working CO alarms (where required) and smoke alarms.

### Testing and Maintenance

Smoke alarms should be tested monthly. Never use an open flame to test your smoke alarms. Test for operation using the test button until the alarm sounds. If battery operated alarms do not sound, replace the battery and try again. If the alarm still does not sound, replace it immediately.

Clean the alarm detection chamber and protective cover every six months using the soft brush attachment on your vacuum.

### Battery Replacement

To ensure proper operation, replace batteries at least once per year (or when intermittent beeping is heard).

## Open Air Burning By-law

City of Greater Sudbury's open air burning by-law (2009-132) regulates outdoor burning.

One of the great things about living in Greater Sudbury is being able to enjoy our beautiful outdoors. Regardless of the season, campfires are often a staple in spending time with friends and family. Campfires are one of the most common type of outdoor burning. There are a few things you need to know about safe burning when it comes to campfires.

### According to the open air burning by-law, there are some guidelines you need to follow:

- Ensure the campfire is contained within an area completely surrounded by a non-combustible barrier of metal, masonry, ceramic or stone or is contained within a pit in the ground;
- The diameter of the campfire area must not exceed 66 centimetres;
- Only burn clean, dry, non treated wood.
- The campfire must be located at least:
  - 6 metres from any structure; and
  - 5 metres from any forest or woodland;

### You CANNOT burn the following items in a campfire:

- Household waste/garbage;
- Construction material;
- Materials made of or containing rubber;
- Plastic;
- Tar; or
- Wet material.

### Burning Time and Water Supply

It is also important to know that under the open air burning by-law there are restrictions on when you can burn campfires. The by-law states that you can only burn between one half hour before sunset and one half hour after sunrise. Also, please ensure the person tending to the campfire has the necessary tools and enough water nearby to put out the fire, should it get out of control.

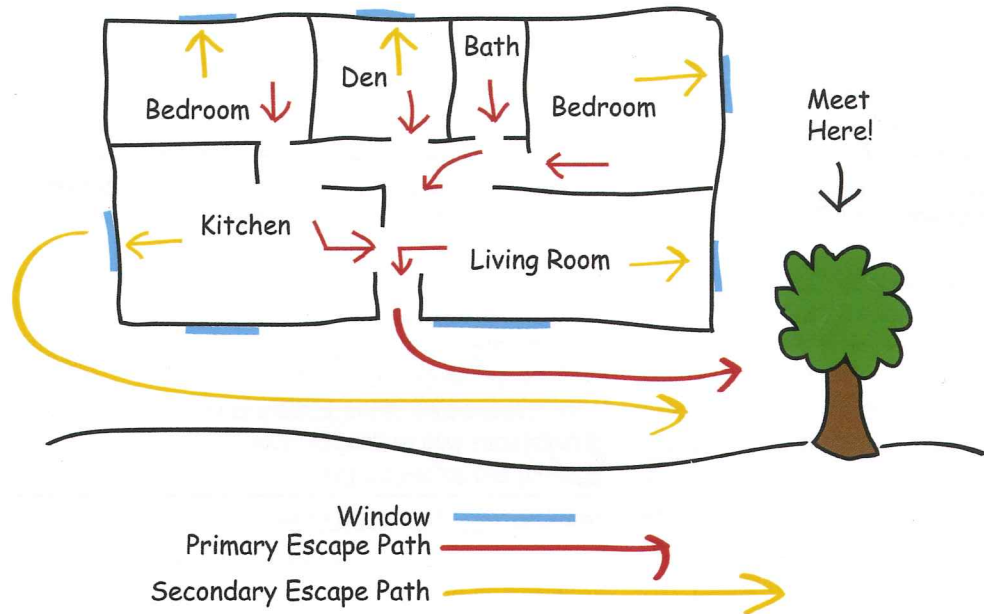
If you would like to learn more about the open air burning by-law please visit the City of Greater Sudbury's website at [www.greatersudbury.ca/bylaws](http://www.greatersudbury.ca/bylaws) or call Greater Sudbury Fire Services at 705-674-4455 ext. 3743.





## Plan To Live

# Get Out and Stay Out



Each member of the household should become familiar with the methods of escape, and take part in regular fire drills. Fire safety and escape planning is a family affair. Pre-arrange a meeting place a safe distance away from the building so you can make sure everyone is accounted for.

Make sure family members, overnight guests and babysitters are familiar with your home fire escape plan. You may wish to post the escape plan where it will be seen by everyone.

**Have an alternate plan.** The main escape route may become impassable because of smoke or fire.

Decide in advance who will assist the very young, the elderly or the infirm in the event of an emergency. Conduct regular fire drills. Have family members practice escaping 'blind' from every area of the house. Install extra alarms if necessary in bedrooms where doors are kept closed or for persons who are hard of hearing. Be sure everyone in the household knows how to dial 911 and report a fire as soon as they are safely out of the home.

**GET OUT AND STAY OUT.** Never let anyone go back into the burning building. Use the grid at the back of this book to draw a map of your home, similar to the example shown. Prepare a diagram for each floor. Include all emergency exits (at least two exits from each room, if possible.) Show all walls, doors, windows and stairs. Clearly mark your agreed-upon meeting place **away from the home**.

# Home Safety Check List

Our Family Cares About Your Family



## Smoking Materials

- Do smokers only smoke outside of the home? Yes  No
- Is everyone aware of the danger of smoking in bed? Yes  No
- Do you provide large safe ashtrays wherever people smoke? Yes  No
- Do you empty ashtrays into a non-combustible container for disposal? Yes  No
- Are matches and lighters kept away from heat and children? Yes  No

## Housekeeping

- Do you keep your basement, storage room, garage and yard clean of rubbish and other combustible waste? Yes  No
- Is all necessary storage kept away from sources of heat, such as the furnace, radiators and portable heaters? Yes  No
- Is the lint trap on your clothes dryer cleaned after each use? Yes  No

## Heating Appliances

- Do you have your furnace pipes and chimney cleaned and checked before each heating season? Yes  No
- Portable fuel-burning heaters require oxygen to operate efficiently. Do you provide proper ventilation when they are in use? Yes  No
- Do you keep portable heaters at least one meter (three feet) away from drapes, couches, etc? Yes  No
- Is your fireplace equipped with close-fitting metal fire screen or heat-tempered glass doors? Yes  No
- Are ashes for disposal kept in metal containers? Yes  No

## Flammable Liquids

- Are all flammable liquids, solvents and adhesives stored in approved containers? Yes  No
- Are these items stored and used in well-ventilated areas, away from children, sparks or heat? Yes  No
- Are all gasoline powered appliances stored outside the house? Yes  No
- Are all pressurized aerosol cans stored in a cool place away from heat sources? Yes  No

