

ID	Description	Sector	Status	Year
1	Wal-Mart - 188,313 sq ft	Commercial	Completed	2009
2	Laurentian University Proposed road connection	Infrastructure	Proposed	0
3	Breezes Retirement Residence 3 storey (15,500 sq ft)	Seniors Residence	Under Construction	2009
4	St. Joseph's Villa - 128 bed long-term care facility 86,400 sq ft	Institutional	Completed	0
5	Sudbury Regional Hospital Phase 2 addition (130,000 sq ft) 1 site hospital (873,000 sq ft)	Institutional	Completed	2007
6	Proposed Retirement Village Bethel Lake (225 units)	Seniors Residence	Proposed	0
7	RDSB - Addition (Arts Wing, Phase 3)	Institutional	Under Construction	2010
8	College Boreal - Addition to Green House (Research Building)	Institutional	Under Construction	2010
9	Sudbury RioCan Centre - Phase 3 expansion (169,211 sq. ft)	Commercial	Completed	2005
10	Lowe's Home Improvement Store	Commercial	Completed	2009
11	Fairfield Inn & Suites - New hotels (81 units)	Commercial	Completed	2005
12	Pioneer Industrial Park - Proposed 75 acre industrial park	Industrial	Proposed	0
13	New Sudbury Shopping Centre -Regional mall redevelopment (Wal-mart)	Commercial	Completed	2005
14	Ecole publique de la Decouverte/Valleyview Public fr Elementary School	Institutional	Completed	2006
15	Ecole Alliance/St-Joseph elementary school addition- Phases 1 & 2	Institutional	Completed	2005
16	Xstrata - Strathcona Mill - New Filter & Truck loading station	Industrial	Under Construction	2010
17	Pioneer Manor - nursing home expansion (110,042 sq. ft)	Seniors Residence	Completed	2006
18	Hampton Inn & Homewood Suites	Commercial	Completed	2007
19	Rainbow Centre - Interior and exterior renovations	Commercial	Completed	2006
20	Xstrata - Fraser Mine Alter Interior Office/Shifter's Wicket Area	Industrial	Under Construction	2010
21	Vale - New oxygen plant (\$120 million)	Industrial	Completed	0
22	Kingsway - Four-laning to Southeast bypass	Infrastructure	Completed	0
23	Ecole Notre-Dame de l'Esperance Phase 2 addition	Institutional	Under Construction	2005
24	Ecole Jean-Ethier Blais addition	Institutional	Completed	2005
25	South End Sewer Rock Tunnel	Infrastructure	Completed	2009
26	Southridge Mall - Mall expansion and renovations (158,790 sq. ft) (Zellers/Goodlife)	Commercial	Completed	2005
27	Ecole Jeanne Sauve interior alterations	Institutional	Under Construction	2010
28	Highway 69 Four-laning (Phase 1: realignment south to Estaire)	Infrastructure	Completed	2010
29	Municipal Road 35 Four-laning to Chelmsford	Infrastructure	Proposed	0
30	Laurentian University student residence West Court addition (102,235 sq. ft.)	Institutional	Completed	2005
31	Canada Brokerlink - Conversion of former Bell building	Commercial	Completed	2005
32	Dynamic Earth Phase 2 Expansion	Institutional	Completed	2006
33	Laurentian University - New 12 Storey Residence	Institutional	Under Construction	2010
34	Maley Drive extension	Infrastructure	Proposed	0
35	Copper Cliff Manor-Conversion to seniors assisted-living housing (80 guest rooms)	Seniors Residence	Completed	2005
36	Hautamaki site - Approvals in places for 300,000 sq. ft of commercial space	Commercial	Proposed	0
37	Canadian Tire/Mark's Work Wearhouse - New retail store (62,159 sq. ft)	Commercial	Completed	2006
38	McDonald's - New restaurant (rebuild)	Commercial	Completed	2005
39	Seniors residence - Conversion to 85 assisted-living units & 11,500 sq. ft of commercial space	Seniors Residence	Proposed	2005
40	Nickel Rim South Mine development site (1,242,536 sq. ft)	Industrial	Under Construction	2005
41	343315 Ont. Ltd - New Shop Building	Industrial	Under Construction	2010
42	St. Benedict's Secondary School Addition (Foundation Only)	Institutional	Under Construction	2010
43	Palladino Honda -17,600 st. ft expansion and renovation	Commercial	Completed	2005
44	Vale - Coleman Mine 2 storey modular office complex and storage building	Industrial	Under Construction	2010
45	Holy Cross Elementary School (Foundation Only)	Institutional	Under Construction	2010
46	South End Library Construction	Institutional	Under Construction	2010
47	College Boreal D'Arts Shop Facility, Phase II (1,242,536 sq. ft)	Institutional	Completed	2006
48	CVRD/ INCO Ltd SO2 Abatement Project & Wet Gas Cleaning Plant	Industrial	Completed	0
49	Glad Tidings - Addition to Building C & interior alterations	Institutional	Completed	2006
50	City of Greater Sudbury -Addition for Emergency Protective Services 13,269 sq. ft	Institutional	Under Construction	2006
51	Laurentian University 2 story addition to arts building	Institutional	Completed	2006
52	Pioneer Manor Interior alterations to Wing B	Institutional	Completed	2006
53	19,800 sq. ft Addition to Stainless Steel Technology Building	Industrial	Under Construction	2006
54	Talossteel Limited - New Anmar Shop	Industrial	Under Construction	2006
55	ABS Manufacturing & Distributors Ltd. Manufacturing/Office Building	Industrial	Under Construction	2006
56	Dynatec Corporation-Pre-fab Butler building for Offices/Shop	Industrial	Under Construction	2006
57	Tasse Auto Dealership	Commercial	Completed	2006
58	Ecole St. MarieAddition, interior alterations (Phase II)	Institutional	Under Construction	2006
59	Ciro Investments Limited - Industrial building shell	Industrial	Under Construction	2006
60	Valleyview Public School Construction	Institutional	Completed	2006
61	Laurentian University - Construct School of Education	Institutional	Completed	2006
62	Vale - Surface Facilities Upgrade (Coleman Mine Rd)	Industrial	Completed	2006
63	Walden Electrical - Industrial shop & offices	Industrial	Under Construction	2006
64	Shopper's Drugmart	Commercial	Completed	2009
65	Shopper's Drugmart	Commercial	Completed	2006
66	Sudbury Fine Cars expansion (showroom)	Commercial	Completed	2006
67	Canadian Tire Gas Bar/Convenience Store	Commercial	Completed	2006
68	Jungle Gym	Industrial	Completed	2006
69	Foundation for co-generation plat at Sudbury Landfill Site	Industrial	Completed	2006
70	Vale - Dewatering Plant	Industrial	Completed	2006
71	Vale -Construct Levack Mine Office & Dry	Industrial	Completed	2007
72	B & D Manufacturing - Construction new manufacturing building	Industrial	Completed	2007
73	Harley Davidson Dealership	Industrial	Completed	2007
74	Ponterio Developments - new shop building	Industrial	Completed	2007
75	Walden Industrial Park - warehouse	Industrial	Completed	2007

76	Xstrata - Calciner Building	Industrial	Completed	2007
77	Vale - Sampler Tower	Industrial	Completed	2007
78	Transport Training Centre-Convert Shrine Club into training facility	Industrial	Completed	2007
79	Laurentian University - Ben Avery Fitness Centre - 30,840 sq. ft. addition/alterations	Institutional	Completed	2007
80	Sudbury Community Arena interior alterations	Institutional	Completed	2007
81	Cambrian College - Information and Learning Centre - alterations	Institutional	Completed	2007
82	Real Canadian SuperStore	Commercial	Completed	2005
83	Vale - Filtration Plant renovations - Phase II	Industrial	Completed	2005
84	Vale - Clarifier wastewater plant	Industrial	Completed	2005
85	Equipment Rental/Sales	Industrial	Completed	2005
86	Princess Auto	Commercial	Completed	2008
87	Construct Pre-fab manufacturing building	Industrial	Completed	2006
88	1753558 Ontario Inc. - New Warehouse and Offices	Industrial		2009
89	Hotel (towneplace Suites) - 6 Storey, 105 room hotel	Commercial	Under Construcion	2010
90	Princess Anne Public School Addition/interior alterations	Institutional	Under Construction	2010
91	30,581 sq. foot Best Buy	Commercial	Completed	2009
92	73,175.5 sq. foot Toys R Us	Commercial	Completed	2009
93	New retail development (approx. 40,000 sq. ft)	Commercial	Proposed	2009
94	Cambrian College Sustainable Energy Building 9,839 sq ft	Institutional		2009
95	All Nations Church 30,000 sq ft	Institutional	Proposed	2009
96	Cambrian College - Norcat 10,000 sq ft Addition	Institutional		2009
97	College Boreal Residence Addition	Institutional		2009
98	KR Thompson Ltd - New Industrial Building & Offices	Industrial		2009
99	Ontario March of Dimes - Addition/Alterations (Congregate Care Facility)	Institutional	Under Construction	2010
100	Villa St Gabriel Long Term Care Home	Institutional		2009
101	Credit Union	Commercial	Completed	2006
102	Interchange	Infrastructure	Completed	0
103	Vale - Exterior Cladding and Roof Phase III	Industrial	Completed	2005
104	Pioneer Construction office addition	Industrial	Completed	2005
105	Sudbury Hospital services addition	Institutional	Completed	2005
106	Castonguay Blasting addition	Industrial	Completed	2005
107	PowerTel maintenance building	Industrial	Completed	2005
108	McDonald's rebuild restaurant	Commercial	Completed	2007
109	Abs Manufacturing new warehouse	Industrial	Completed	2007
110	Addition to Bull Industries	Industrial	Completed	2007
111	GeoTeck - pre-eng building	Industrial	Completed	2007
112	Elasto-Valve Rubber Products - Addition	Industrial	Completed	2007
113	Vale - Raise pre-fab structure (dry & 2 offices)	Industrial	Completed	2007
114	Addition to industrial	Industrial	Completed	2007
115	New Structure - pre-fab and addition	Industrial	Completed	2007
116	Xstrata Nickel Rim vent system	Industrial	Completed	2007
117	Vale - Construct Core Logging Building	Industrial	Completed	2007
118	Vale - 9800 sq. ft. warehouse at Podolsky Mine	Industrial	Completed	2007
119	Addition to Helene-Gravel Public School	Institutional	Completed	2007
120	Laurentian University - 10,832 sq. ft. new hospice	Institutional	Completed	2007
121	Dynamic Earth Addition	Institutional	Completed	2007
122	Pioneer Manor - Alter Interior/Canopy Addition	Institutional	Completed	2007
123	Redwood Acres Public School Addition	Institutional	Completed	2007
124	Pharma Plus	Commercial	Completed	2008
125	Pharma Plus	Commercial	Completed	2008
126	Vrab's Independent Grocer alterations	Commercial	Completed	2008
127	Community Care Access Interior Alterations	Commercial	Completed	2008
128	Costco - Interior Alterations	Commercial	Completed	2008
129	Wild at Heart complex	Commercial	Completed	2008
130	Carpenters Union new structure	Commercial	Completed	2008
131	Chelmsford Animal Hospital - new structure	Commercial	Completed	2008
132	Canadian Tire Addition	Commercial	Completed	2008
133	McJim Ltd Construction - Addition	Industrial	Completed	2008
134	Vale Addition to Clarabelle Mill Administration Building	Industrial	Completed	2008
135	Vale - Alterations - Dry and Utilities Plant Phase 3	Industrial	Completed	2008
136	Vale - Construct Maintenance Shop and Office Complex	Industrial	Completed	2008
137	Remcan Industries New building	Industrial	Completed	2008
138	Northern Uniform Service - Addition	Industrial	Completed	2008
139	Talossteel - Construct Nortrax Building F	Industrial	Completed	2008
140	Gregrin Holdings New Structure	Industrial	Completed	2008
141	Construct Addition - Phase II, CC Mech	Industrial	Completed	2007
142	Talossteel Ltd - new Industrial Building	Industrial	Completed	2008
143	Xstrata - Backfill Plant and Truck Dump buildings - Nickel Rim South Mine	Industrial	Completed	2008
144	Xstrata - Modular Office Space Constructed - Nickel Rim South Mine	Industrial	Completed	2008
145	Xstrata - Office/Dry Building for Nickel Rim South Mine Project	Industrial	Completed	2008
146	Coniston Industrial Park - Raise Pre-Fabricated Cold Storage Building	Industrial	Completed	2008
147	Vale - Alter Interior - Garson Mine Office	Industrial	Completed	2008
148	Vale - New Warehouse Building- Levack Mine	Industrial	Completed	2008
149	Xstrata - Alter roof	Industrial	Completed	2008
150	Vale - New Structure - exhaust fan equipment enclosure	Industrial	Completed	2008
151	Xstrata - Addition to Copper Cleaning Foundation - Strathcona Mill	Industrial	Completed	2008

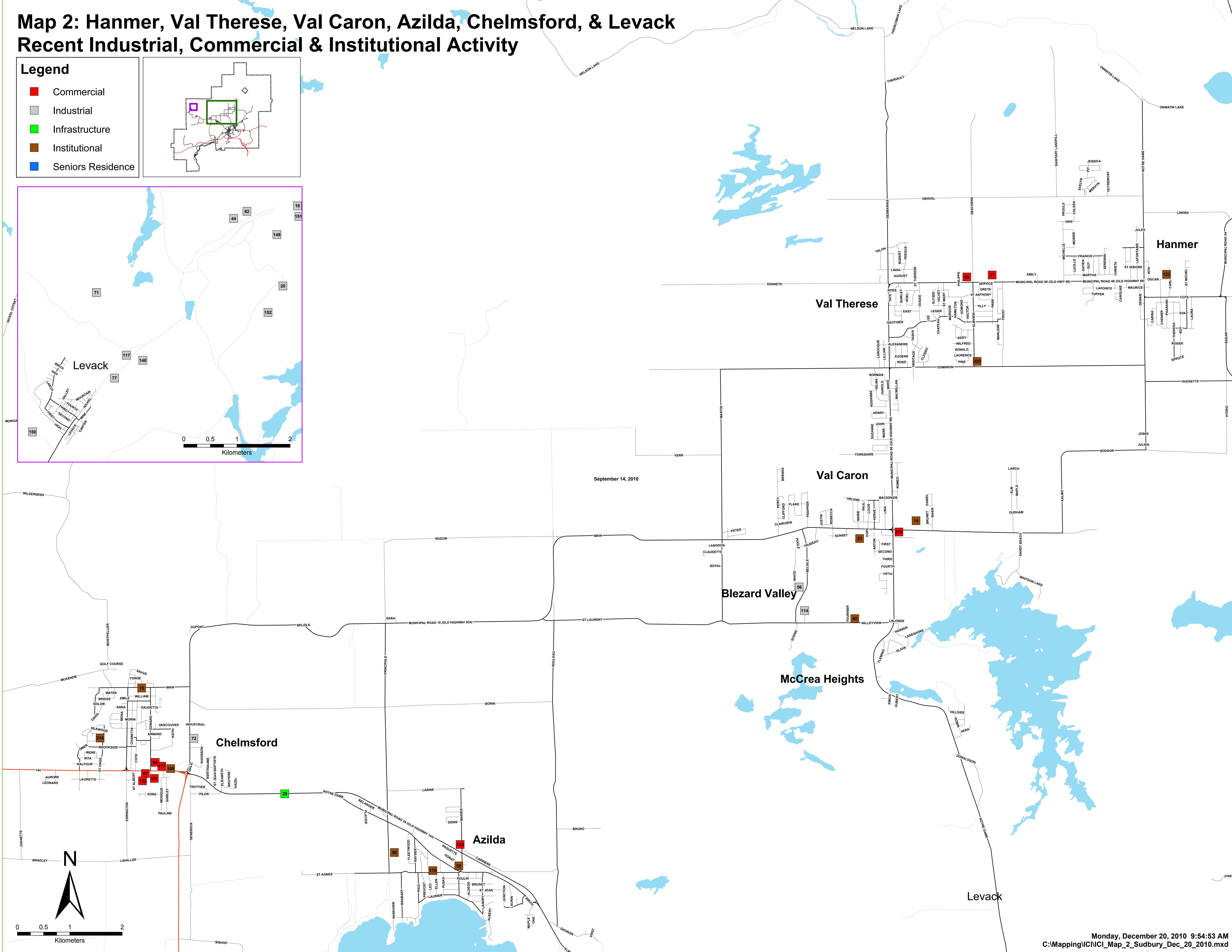
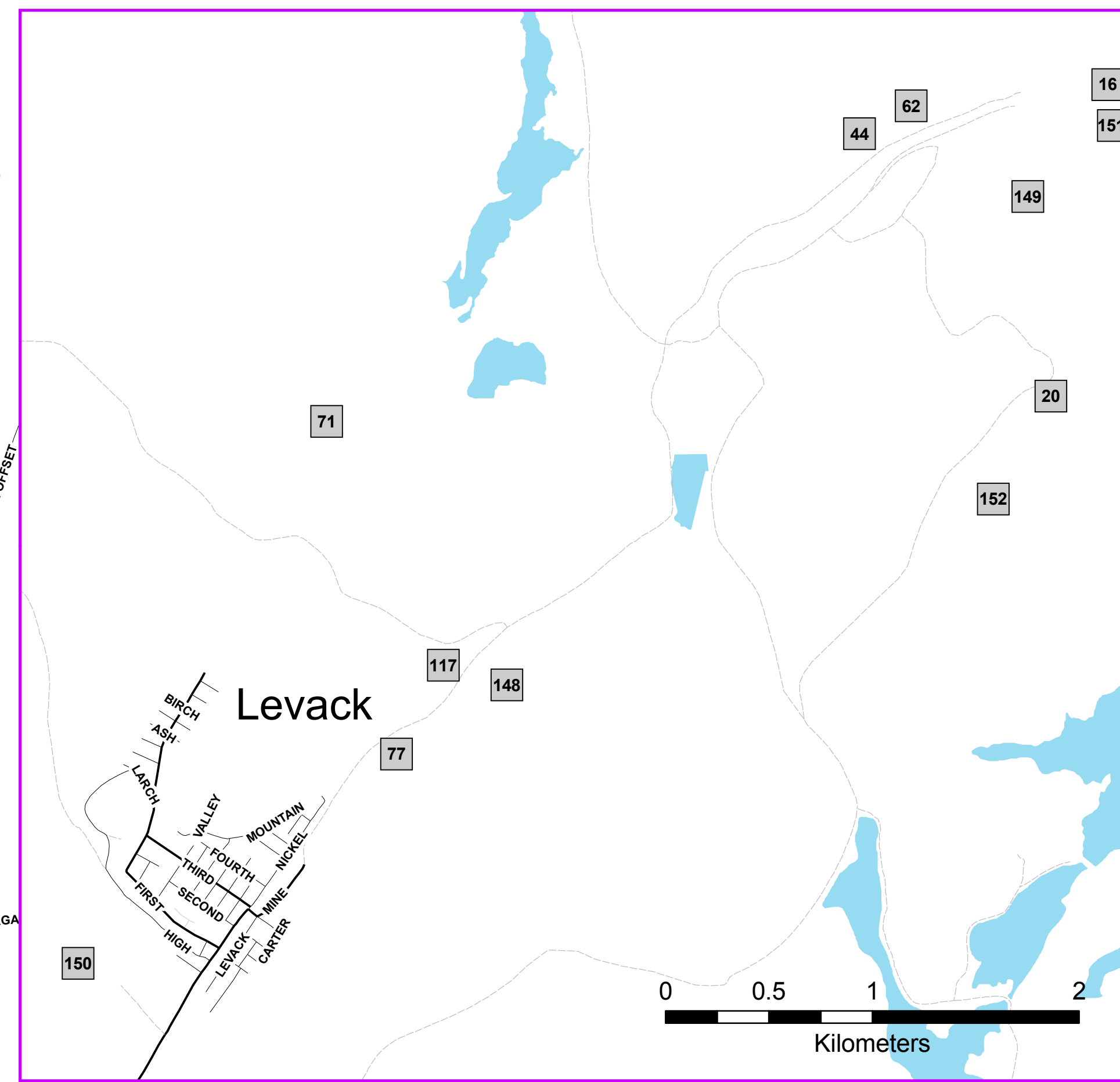
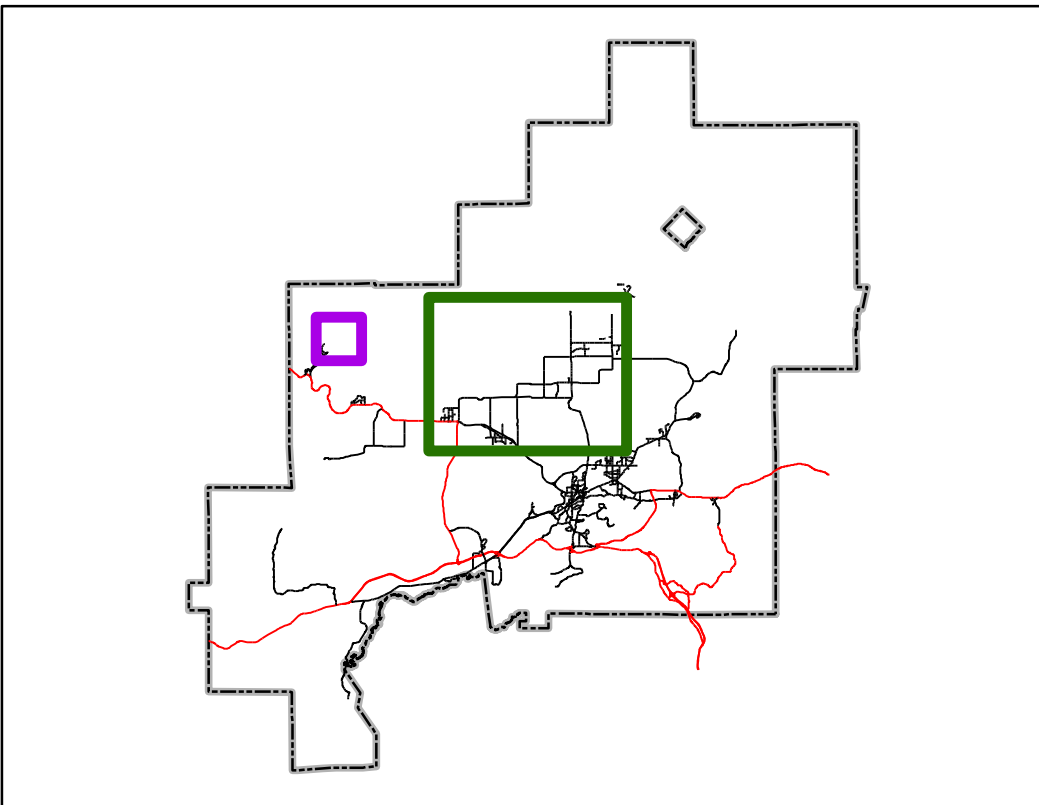
152	Xstrata - Alter interior - Dry Basement modification	Industrial	Completed	2008
153	St Joseph's Villa - 68 Bed addition	Institutional	Completed	2008
154	Laurentian University - Addition/Alterations to Parking & Security Maintenance Bldg	Institutional	Completed	2008
155	Laurentian University - Brick & Pre-cast repairs to Classroom Building	Institutional	Completed	2008
156	Cecil Facer Alterations - exterior windows	Institutional	Completed	2008
157	Sudbury Regional Hospital - MRI Installation (2nd floor)	Institutional	Completed	2008
158	Pioneer Manor - Additions to Wing B - Redevelopment Phase II	Institutional	Completed	2008
159	Pioneer Manor - B Wing Redevelopment - Phase I Foundations	Institutional	Completed	2008
160	Alexander Public School Addition	Institutional	Completed	2008
161	Lively Public School & Wind Turbine	Institutional	Completed	2008
162	Cambrian College - Residence Addition	Institutional	Completed	2008
163	Addition/Alterations to Sewage Treatment Plant	Infrastructure	Completed	2008
164	Marcus Drive Development (3 tenants)	Commercial	Proposed	2009
165	Marcus Drive Development (3 tenants)	Commercial	Proposed	2009
166	1299 Marcus Drive (4 tenants)	Commercial	Under Construction	2009
167	Dalron Office Addition	Commercial	Under Construction	2009
168	Plaza 69 Pharmacy Renovations	Commercial	Completed	2009
169	Corfab Masonry - 4 bay addition	Industrial	Completed	2009
170	Addition & Alter Interior of Sudbury Secondary School	Institutional		2009
171	Shopper's Drug Mart	Commercial	Under Construction	2010
172	Lockerby Secondary School - New windows	Institutional	Completed	2009
173	Sudbury Regional Hospital - Interior Alterations (Pharmacy Clean Room)	Institutional		2009
174	Sudbury Regional Hospital -Interior Alterations (Diagnostic Imaging, North Tower)	Institutional		2009
175	Northeastern Elementary School - new windows	Institutional	Completed	2009
176	Vale - Office/Mine Dry	Industrial	Under Construction	2009
177	Shopper's DrugMart Interior Alterations	Commercial	Under Construction	2009
178	Azilda Library 4,520 sq ft Addition	Institutional	Completed	2009
179	Living with Lakes Centre	Institutional	Under Construction	2009
180	Dollarama and Bouclair Construction (17,260 sq ft)	Commercial	Completed	2009
181	Proposed Commercial Development	Commercial	Proposed	0
182	Sudbury Mine Mill Union new structure	Commercial	Under Construction	2010
183	Proposed Industrial Subdivision	Industrial	Proposed	0
184	Proposed Restaurant	Commercial	Proposed	0
185	College Boreal - Link Addition - Phase 1 (Foundation)	Institutional	Under Construction	2010
186	College Boreal Addition	Institutional	Under Construction	2010
187	McDonald's Addition	Commercial	Under Construction	2010
188	New Just Lubes Construction	Commercial	Under Construction	2010
189	Grant Aggregates & Industrial Supply Inc	Industrial	Under Construction	2010
190	Nearnorth Holdings Addition	Industrial	Under Construction	2010
191	Claimsecure Space - Interior Alterations	Commercial	Under Construction	2010
192	New A & W Restaurant Construction	Commercial	Completed	2010
193	Bell Park - Ampitheatre Construction	Institutional	Under Construction	2010
194	Algoma Hospital Siding/Windows	Institutional	Under Construction	2010
195	Vale - Alter Rood	Industrial	Under Construction	2010
196	Vale - Construct Ancilliary Structure	Industrial	Under Construction	2010
197	Vale - Addition	Industrial	Under Construction	2010
198	Vale - Alter Roof	Industrial	Under Construction	2010
199	Vale - Alter Exterior	Industrial	Under Construction	2010
200	Countryside Arena Addition - Phase 2	Institutional	Under Construction	2010
201	William Day Construction - Heavy equipment welding & wash bay	Industrial	Under Construction	2010
202	Vale - New Dry Building at Clarabelle Mill	Industrial	Under Construction	2010
203	M & D Forest Products New Structure	Industrial	Under Construction	2010
204	Purolator Courier Addition	Industrial	Under Construction	2010
205	Vale - Renovations to divisional shops @ Copper Cliff Smelter	Industrial	Under Construction	2010
206	Ecole St Denis new construction	Institutional	Under Construction	2010
207	Science North - Alter Northern Ecocsystem Exhibit (Level 3)	Institutional	Under Construction	2010
208	Sewage Treatment Plant - Alter Dechlorination plant	Infrastructure	Under Construction	2010
209	Cambrian College - Addition to Sustainable Energy Centre	Institutional	Under Construction	2010
210	Airport - Hangar with offices	Industrial	Under Construction	2010
211	Xstrata - Custom Feed Unloading Facility	Industrial	Under Construction	2010
212	First Nickel Inc - Pavilion Dome Building	Industrial	Under Construction	2010
213	Vale - New Warehouse/Shop	Industrial	Under Construction	2010
214	Etc Inc - New Warehouse/Office	Industrial	Under Construction	2010
215	Flanagan Food Services - Warehouse Addition	Industrial	Under Construction	2010
216	High Strength Plate & Profile Addition	Industrial	Under Construction	2010
217	CGS Medical Offices - Alterations to City of Lakes Health Centre	Institutional	Under Construction	2010
218	Retirement Residence - Interior Alterations (Phase 1)	Institutional	Under Construction	2010
219	Convert School to Hotel	Commercial	Under Construction	2010
220	Howard Armstrong Rec Centre Alter exterior	Institutional	Under Construction	2010



# Map 2: Hanmer, Val Therese, Val Caron, Azilda, Chelmsford, & Levack Recent Industrial, Commercial & Institutional Activity

## Legend

- Commercial
- Industrial
- Infrastructure
- Institutional
- Seniors Residence



# Map 3: Lively & rural Walden, Garson, rural Nickel Centre Recent Industrial, Commercial & Institutional Activity

## Legend

- Commercial
- Industrial
- Infrastructure
- Institutional
- Seniors Residence

