

MAP 9.1 Greater Sudbury Transportation Study Draft Active Transportation Network Concept

We need your help!

This map illustrates the Draft Active Transportation (AT) Network Concept. It is based on the Candidate Routes mapping, however contains fewer routes as some of the candidates were eliminated following field investigations.

The Draft AT Network Concept classifies routes by facility type (see also the facility types matrix display here today).

Please review the routes and facility types and provide us with your comments directly on our map.

Legend

On-Road Facilities

- Existing Bike Lane
- Proposed Bike Lane
- Proposed Signed Bike Route with Existing Paved Shoulder
- Proposed Signed Bike Route with Paved Shoulder*
- Existing Signed Bike Route
- Proposed Signed Bike Route
- Proposed Edgeline

Separated Facilities

- Proposed Cycle Track

Off-Road Facilities

- Existing Multi-Use Trail
- Proposed Multi-Use Trail
- Desired Connections

Existing Road Network

- Existing Provincial Road / Highway
- Existing Roads

Proposed Road Network

- Proposed Roads for Construction
- Proposed Roadway Widening
- Proposed Road Improvements to Provincial Highways
- Potential Roads for Future Consideration (after 2031)
- Roads to be constructed as part of new developments

Regional Trails and Routes

- Trans Canada Trail

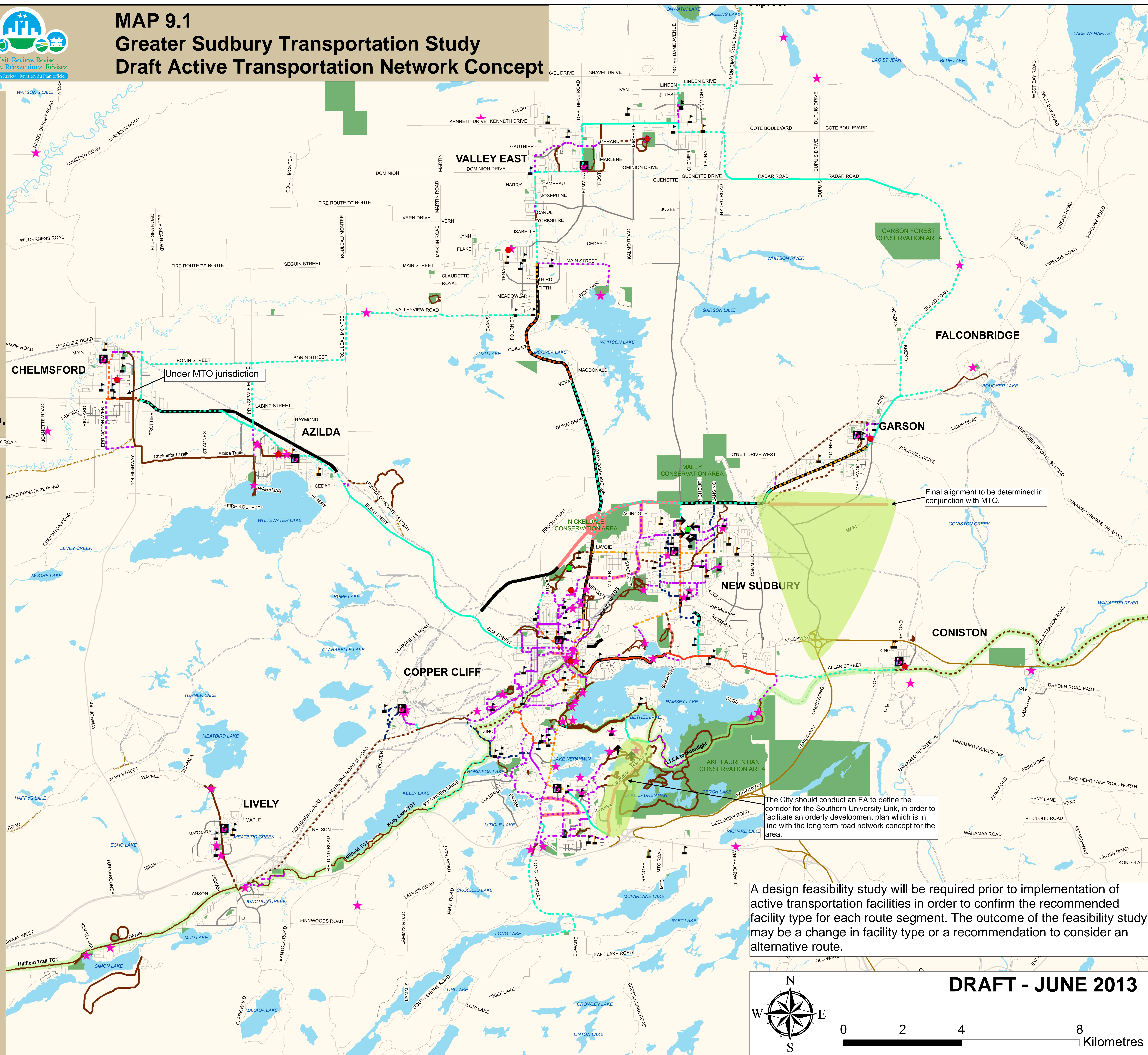
Destinations

- Arena / Community Centre
- College/University
- Schools
- Libraries
- Tourist Attractions

Other

- Lakes and Rivers
- Parks and Conservation Areas
- Active Railway
- Abandoned Railway

* Consider adding rumble strip between roadway and signed bike route.



MAP 9.2 Greater Sudbury Transportation Study Draft Active Transportation Network Concept - Downtown Enlargement

We need your help!

This map illustrates the Draft Active Transportation (AT) Network Concept. It is based on the Candidate Routes mapping, however contains fewer routes as some of the candidates were eliminated following field investigations.

The Draft AT Network Concept classifies routes by facility type (see also the facility types matrix display here today).

Please review the routes and facility types and provide us with your comments directly on our map.

Legend

On-Road Facilities

- Existing Bike Lane
- - - Proposed Bike Lane
- Proposed Signed Bike Route with Existing Paved Shoulder
- - - Proposed Signed Bike Route with Paved Shoulder*
- Existing Signed Bike Route
- - - Proposed Signed Bike Route
- - - Proposed Edgeline

Separated Facilities

- - - Proposed Cycle Track

Off-Road Facilities

- Existing Multi-Use Trail
- - - Proposed Multi-Use Trail
- ↑ Desired Connections

Existing Road Network

- Existing Provincial Road / Highway
- Existing Roads

Proposed Road Network

- Proposed Roads for Construction
- Proposed Roadway Widening
- Proposed Road Improvements to Provincial Highways
- Potential Roads for Future Consideration (after 2031)
- Roads to be constructed as part of new developments

Regional Trails and Routes

- Trans Canada Trail

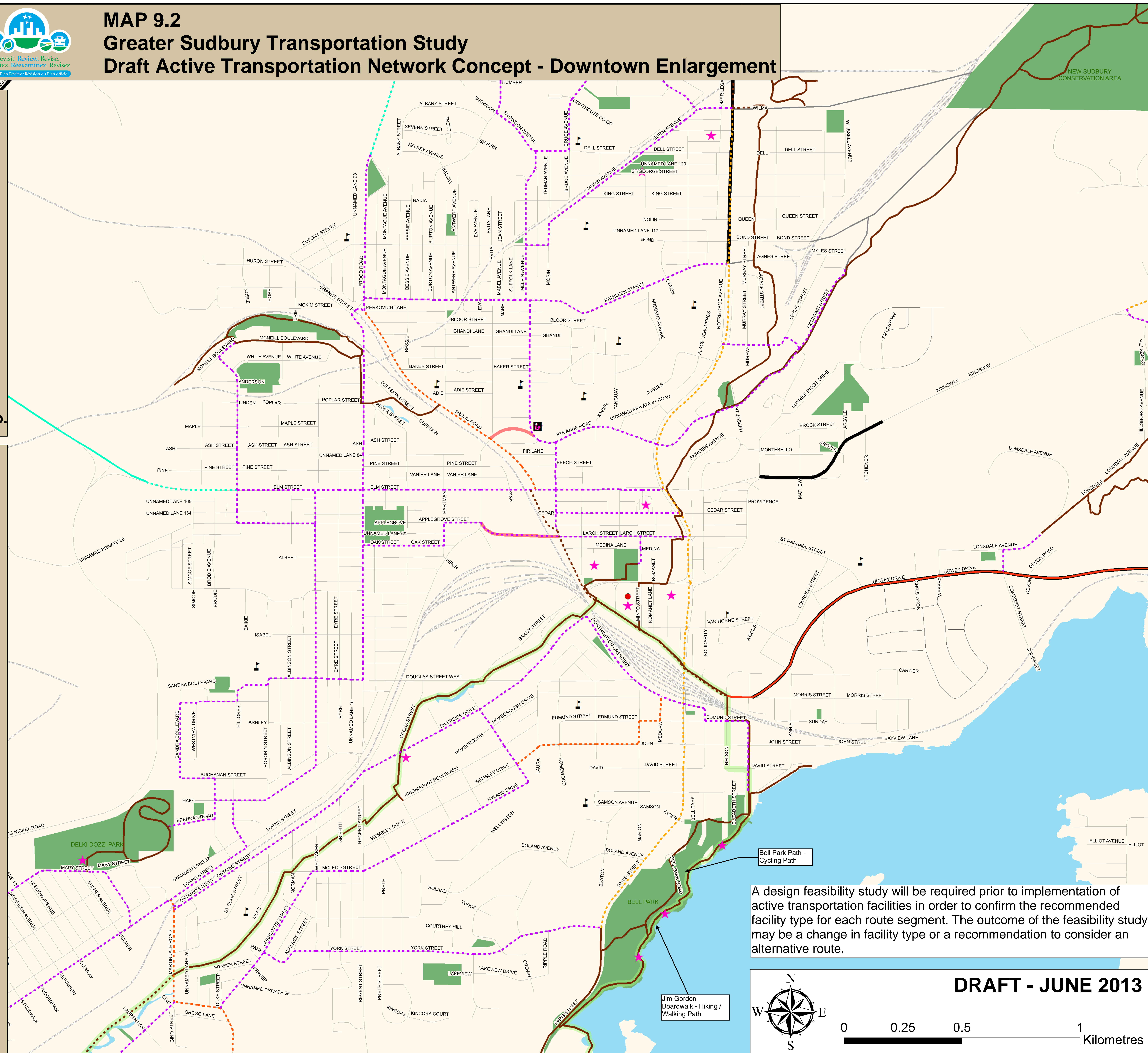
Destinations

- Arena / Community Centre
- College/University
- ⚡ Schools
- 📖 Libraries
- ★ Tourist Attractions

Other

- Lakes and Rivers
- Parks and Conservation Areas
- Active Railway
- Abandoned Railway

* Consider adding rumble strip between roadway and signed bike route.



DRAFT - JUNE 2013

We need your help!

This map illustrates the Draft Active Transportation (AT) Network Concept. It is based on the Candidate Routes mapping, however contains fewer routes as some of the candidates were eliminated following field investigations.

The Draft AT Network Concept classifies routes by facility type (see also the facility types matrix display here today).

Please review the routes and facility types and provide us with your comments directly on our map.

Legend

On-Road Facilities

Existing Bike Lane

Proposed Bike Lane

Proposed Signed Bike Route with Existing Paved Shoulder

Proposed Signed Bike Route with Paved Shoulder*

Existing Signed Bike Route

Proposed Signed Bike Route

Proposed Edgeline

Separated Facilities

Proposed Cycle Track

Off-Road Facilities

Existing Multi-Use Trail

Proposed Multi-Use Trail

Desired Connections

Existing Road Network

Existing Provincial Road / Highway

Existing Roads

Proposed Road Network

Proposed Roads for Construction

Proposed Roadway Widening

Proposed Road Improvements to Provincial Highways

Potential Roads for Future Consideration (after 2031)

Roads to be constructed as part of new developments

Regional Trails and Routes

Trans Canada Trail

Destinations

Arena / Community Centre

College/University

Schools

Libraries

Tourist Attractions

Other

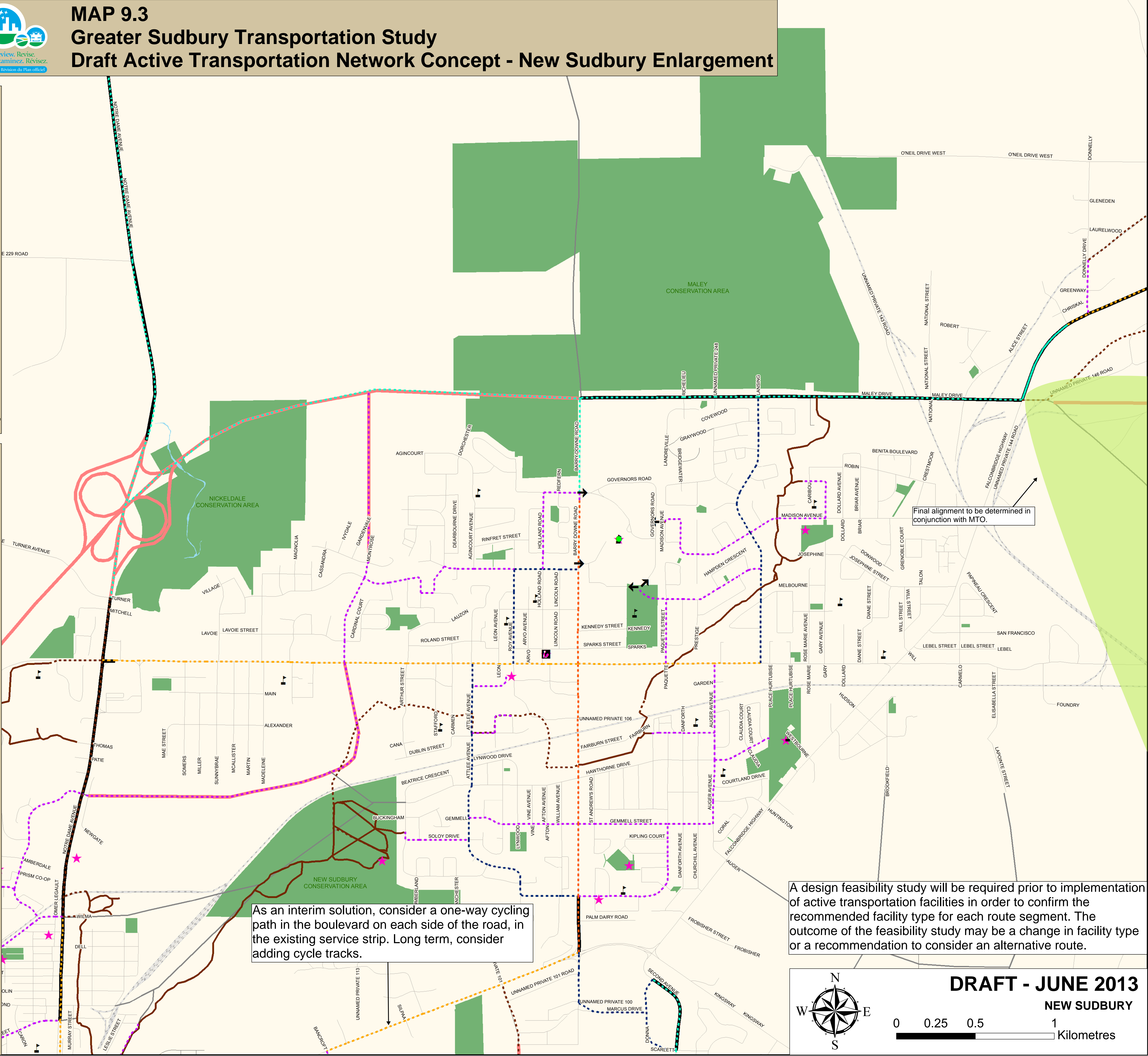
Lakes and Rivers

Parks and Conservation Areas

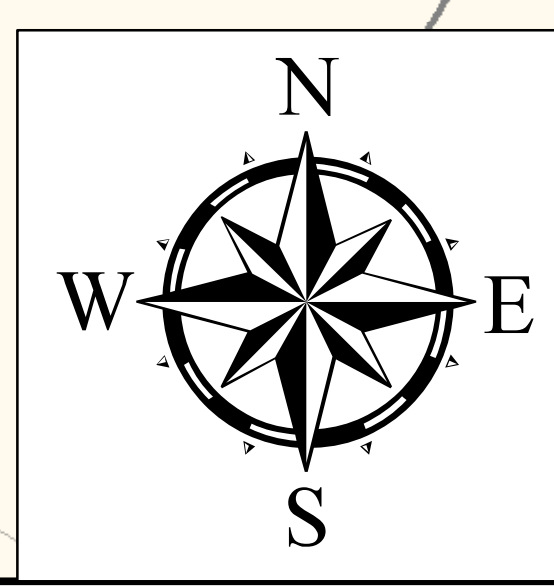
Active Railway

Abandoned Railway

* Consider adding rumble strip between roadway and signed bike route.



A design feasibility study will be required prior to implementation of active transportation facilities in order to confirm the recommended facility type for each route segment. The outcome of the feasibility study may be a change in facility type or a recommendation to consider an alternative route.



DRAFT - JUNE 2013

NEW SUDBURY

00.250.51

Kilometres

MAP 9.4 Greater Sudbury Transportation Study Draft Active Transportation Network Concept - South End Enlargement

We need your help!

This map illustrates the Draft Active Transportation (AT) Network Concept. It is based on the Candidate Routes mapping, however contains fewer routes as some of the candidates were eliminated following field investigations.

The Draft AT Network Concept classifies routes by facility type (see also the facility types matrix display here today).

Please review the routes and facility types and provide us with your comments directly on our map.

Legend

On-Road Facilities

- Existing Bike Lane
- Proposed Bike Lane
- Proposed Signed Bike Route with Existing Paved Shoulder
- Proposed Signed Bike Route with Paved Shoulder*
- Existing Signed Bike Route
- Proposed Signed Bike Route
- Proposed Edgeline

Separated Facilities

- Proposed Cycle Track

Off-Road Facilities

- Existing Multi-Use Trail
- Proposed Multi-Use Trail
- Desired Connections

Existing Road Network

- Existing Provincial Road / Highway
- Existing Roads

Proposed Road Network

- Proposed Roads for Construction
- Proposed Roadway Widening
- Proposed Road Improvements to Provincial Highways
- Potential Roads for Future Consideration (after 2031)
- Roads to be constructed as part of new developments

Regional Trails and Routes

- Trans Canada Trail

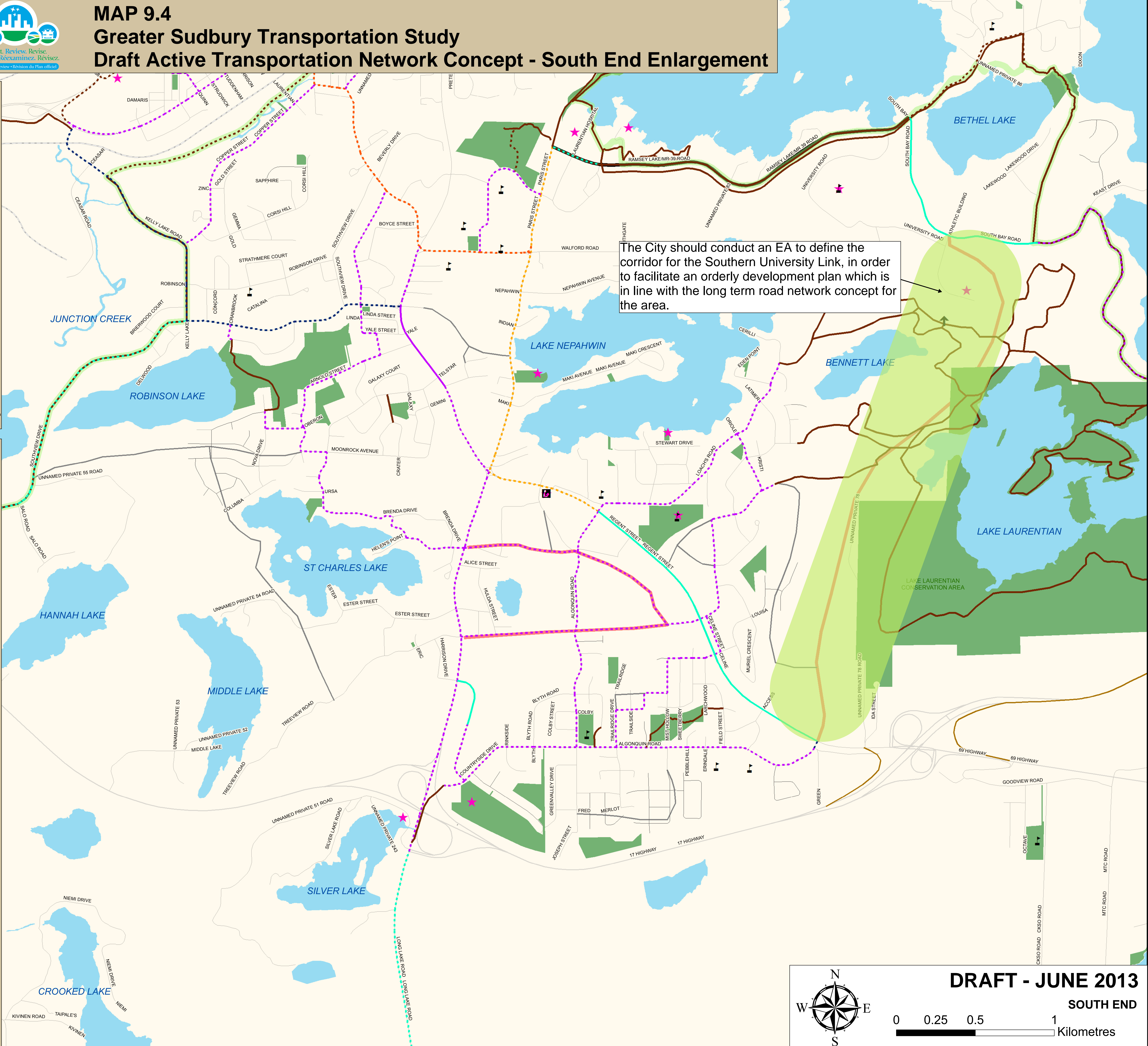
Destinations

- Arena / Community Centre
- College/University
- Schools
- Libraries
- Tourist Attractions

Other

- Lakes and Rivers
- Parks and Conservation Areas
- Active Railway
- Abandoned Railway

* Consider adding rumble strip between roadway and signed bike route.





* Consider adding rumble strip between roadway and signed bike route.

