

- 11. Represents the agency with government bodies and other groups concerned with client population and services on various provincial, regional and community boards and committees on behalf of the Branch**
  - 11.1. Establishing and maintaining service agreements with mental health and other related agencies.
- 12. Represents program and agency in a professional manner**
- 13. Provides support to volunteers and students and other staff assigned to the program area**
- 14. Provides supervision to agency volunteers and students as requested**
  - 14.1. Providing orientation, regular supervision, advice and support to volunteers and student placements in program and service area.
  - 14.2. Evaluating performance of volunteers and students in the program area.
  - 14.3. Recording volunteer and student activities including monthly hours, mileage and other expenses.
  - 14.4. Reviewing volunteer and student expenses to ensure appropriateness.
- 15. Substitutes for and assists other agency staff where skills are applicable**
  - 15.1. Providing additional support to staff as required.
  - 15.2. Providing after hour coverage for clients of the program following policies and procedures.
  - 15.3. Participating in back-up duties of the agency on and rotational basis.
- 16. Avails self of opportunities for professional development**
  - 16.1. Bringing forward training needs and takes responsibility for seeking out relevant training opportunities.
  - 16.2. Participating in workshops and seminars as required.
  - 16.3. Attending and participating in Agency and program meetings as required.
- 17. Works within the Policies and Procedures of the CMHA Sudbury Branch**

#### **ESSENTIAL RESPONSIBILITIES AND DUTIES:**

1. Carrying out all duties of the Community Mental Health Worker: Outreach position in a moral and ethical manner.
2. Being present at the scheduled time of the day ready for the performance of duties.
3. Being ready emotionally and physically to perform duties.

#### **REQUIREMENTS OF THE POSITION:**

- 1. Responsibilities of the position**
  - 1.1. Maintaining professional working relationships with clients, service providers, co-workers and the community.
  - 1.2. Having occasional contact with the community to provide public education and represent the agency on committees.
  - 1.3. Having frequent contact with clients.
  - 1.4. Providing day-to-day direction and training to volunteers and students.
  - 1.5. Assisting with the work within the Housing Program.
  - 1.6. Making decisions with input/ assistance from the Manager.
- 2. Skills required for the position**
  - 2.1. Managing occasional changes in the volume of work and conditions.
  - 2.2. Having the ability to utilize all office equipment.
  - 2.3. Having the ability to speak in public and work in the community

**3. Effort required for the position**

- 3.1. Requiring interpretation and reasoning of written and audio-visual material.
- 3.2. Needing to be skilled at handling difficult situations.
- 3.3. Ensuring the safety and well being of clients.
- 3.4. Needing to be highly motivated and takes initiative.

**4. Demands of the position**

- 4.1. Having the ability to speak in public and participating in community work.
- 4.2. Some concentration and strain through the use of computer screen.

**5. Working conditions of the position**

- 5.1. Noise level is minimal.
- 5.2. Frequent in and occasional out of town travel.
- 5.3. Few interruptions of work.
- 5.4. Work is primarily completed during the day with occasional evenings.
- 5.5. Work is completed primarily in the community with some office work.
- 5.6. Occasional exposure to cigarette smoke when meeting with the client.

**JOB SPECIFICATIONS/ QUALIFICATIONS:****1. Education**

- 1.1 Pass Degree/ Diploma or Canadian equivalent in health or related discipline

**2. Experience**

- 2.1. Minimum one year experience working in the mental health field
- 2.2. Minimum one year experience working with both adult consumers of mental health and families.

**3. Knowledge**

- 1.1. Knowledge of Mental Health legislation, Occupational Act: Health & Safety, Ontario Human Rights Code, Tenant Protection Act and Long Term Care Act
- 3.1. Understanding of Mental Health Policy
- 3.2. Knowledgeable of community agencies and resources

**4. Languages**

- 4.1 In accordance to our French Language Designation Plan, bilingualism is essential for this position.

**5. Abilities**

- 5.1. Coping: Able to maintain a mature problem-solving attitude while dealing with interpersonal conflict, hazardous conditions, personal rejection, hostility or time demands.
- 5.2. Decisiveness: Able to make decisions quickly on available information and take action, make commitments and not change decisions when challenged, deal with emergencies as necessary
- 5.3. Spoken Communications: Able to clearly present information through the spoken word; influence or persuade others through oral presentation in positive or negative circumstances; listen well.
- 5.4. Perceptivity: Able to interpret verbal and non-verbal behaviour; to develop accurate perception and understanding of others feelings, need, values and opinion; to be sensitive to and aware of personality differences and conflicts.
- 5.5. Organization And Planning: Able to organize or schedule people or tasks; to develop realistic action plans while being sensitive to time constraints and resource availability. Decision Making and
- 5.6. Problem Solving: Able to take action in solving problems while exhibiting judgment and a realistic understanding of issues, able to use reason, even when dealing with emotional topics.

**DISCLAIMER**

Due to the changing nature of the job, the qualifications may be altered from time to time.

**DISCLAIMER**

This Job Description indicates the general nature and level of work expected. It is not designed to cover or contain a comprehensive listing of activities, duties or responsibilities required by the incumbent. Incumbent may be asked to perform other duties as required.

\_\_\_\_\_  
Incumbent Signature

\_\_\_\_\_  
Date

\_\_\_\_\_  
Manager Signature

\_\_\_\_\_  
Date

Executive Director Approval

\_\_\_\_\_  
Initials



# L'Association des jeunes de la rue

213 rue Pine, Sudbury, Ontario P3C 1X4

FNDH Tel.: (705) 675-6422

Outreach Tel.: (705) 669-1502

Fax: (705) 675-1719

info@jeunesdelarue.ca

January 22, 2004

## Information/Summary sheet

### Consultation Presentation: Council Chamber "Tom Davis"

Re: Request for two more beds at Foyer Notre Dame House  
Base budget versus per diem

#### Request # 1: Cost of proposed request

Actual = 7 beds at \$41.90 (per diem) x 365 days = \$107,054.50

Our current budget with the City of Greater Sudbury is subsidized at 95% (\$103,384.00)

Requested budget = 9 beds at \*\*\$41.90 (per diem) x 365 days = \$137,641.50

(\$34,257.50 difference funded at 100%)

\*\* breakdown for the \$41.90 = \$38.00 for operation and 3.90 for personal need going directly to client.

*Please note:* That if The City of Greater Sudbury keeps using the formula in place (per diem) this amount will only be granted if utilization of beds are at an 100 % occupancy.

It is also very important to note that the share of the per diem (41.90) is 20% for the City and 80% from the Province. Therefore the financial impact of this request for the City would be \$6,851.50.

#### Request # 2: Per Diem versus base budget

The rationale behind this specific request is to:

- Avoid financial hardship for the organization delivering services
- Enable the organization to plan effectively and efficiently from year to year
- Bring sustainability within the organization

Please note that operation costs are the same whether occupancy is 50 % or 100%. Presently the City of Greater Sudbury's financial contribution to our residential programs is 62% of our total budget. The remaining 38% comes from MCFCS, fundraising and donations.

#### Conclusion

Finally, if requests are granted the strategy will be in line with recommendations identifying that more beds are required for youth. Please refer to the "Reports on Homelessness" from 2000-2003 and the report "Need Assessment for delivery of Emergency Shelter Beds for Homeless Persons in the City of Greater Sudbury" (page 34 of the said report).



## STATISTICS (Foyer Notre Dame House)

**FOR THE PERIOD OF  
August 2001 to August 2003**

Date	Residents	Occupancy Rate
* August 2001	5	42%
* September 2001	8	69%
* October 2001	9	57%
* November 2001	8	36%
** December 2001	9	73%
** January 2002	8	85%
** February 2002	9	54%
** March 2002	10	42%
** April 2002	15	110%
** May 2002	12	115%
** June 2002	13	90%
** July 2002	9	99%
** August 2002	11	85%
Total for period Aug.01 to Aug. 02	126	
<b>One year's stats</b> ** Sept. 02 to July 03	<b>101</b>	<b>109%</b>

\* Stats show occupancy after Foyer became a residential program for young women only (aged 16 to 17)

\*\* As you will note after the City agreed to increase the age group from 16 - 17 to 16 - 19 and structuring a working protocol with both Geneva House and Efrey our occupancy rate has been considerably higher.



**ENGLISH**

**FRANÇAIS**

**Website**  
**[www.jeunesdelarue.ca](http://www.jeunesdelarue.ca)**



# L'Association des jeunes de la rue

## Mission Statement

Français

Mission Statement

Background

Programs

Financing

Statistics

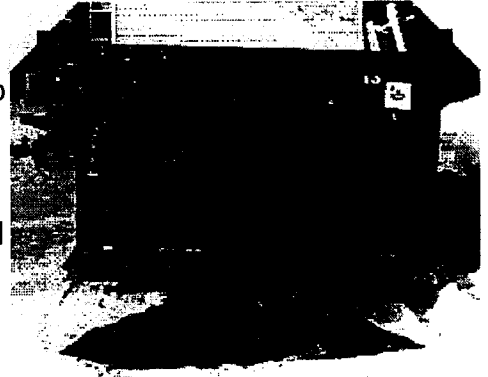
Board of Directors

Contact Us...

To Donate...

Site map

**L'Association des jeunes de la rue** is a not for profit organization offering help to the homeless by providing a wide range of services aimed at intervention, reintegration and social and community re-adaptation.



---

Website development courtesy of  
Sénécal & Associates



# L'Association des jeunes de la rue

## Background

Français

Mission Statement	<p><b>L'Association des jeunes de la rue</b> was incorporated in 1992. At the time homelessness was no longer a social issue limited to the adult male population. Teenagers were being affected and also faced numerous social problems forcing them to live on the streets. Unfortunately, teenagers between the ages of 16 and 17 years of age were slipping through the social nets which were designed to protect them. Being too old, these individuals could not receive assistance from the Children's Aid Society and they could not qualify for Social Assistance because they were too young. Since they were considered too old to be children and too young to be adults, the only option for many of them was to leave home and attempt to survive the hardships of living on the streets.</p>
Background	
Programs	
Financing	
Statistics	
Board of Directors	<p>A group of concerned Sudbury citizens set out to change the fate of some of these individuals. They managed to provide shelter, food, clothing and counselling for those they could identify.</p>
Contact Us...	
To Donate...	
Site map	<p>As with most new social programs, the first year in operation was very difficult. There was barely enough money to pay the rent for the small three-bedroom bungalow that later became Foyer Notre Dame House. All services depended on the generous food and monetary donations received from individuals and agencies. Initially, the shelter was operated by a large pool of volunteers that strongly believed in the mandate set out by the Board of Directors. Within the first year of operation, over 50 young boys and girls received some form of assistance. Unfortunately in 1994, without a stable source of funding, Foyer Notre Dame House was forced to close its doors for a period of approximately one year.</p>

However, with the perseverance of the Board of Directors



and a generous loan from a religious community, the Grey Nuns, a large house that could accommodate up to 11 residents was purchased in 1995 and the project was re-launched. Employees were hired on a full-time and part-time basis, as well as an Executive Director responsible to generate governmental and private funding for the services provided. Residents were offered shelter for a period of three months or less. During this time, through various partnerships with the juvenile agencies serving the Sudbury area, clients were given counselling to help them overcome or deal with their individual issues.

---

Website development courtesy of  
Sénécal & Associates



# L'Association des jeunes de la rue

## Programs

Français

<p>Mission Statement</p>	<ul style="list-style-type: none"> <li>• <u>Foyer Notre Dame House</u></li> <li>• <u>Community Outreach Program</u></li> <li>• <u>Teen Moms</u></li> </ul>
<p>Background</p>	<p><b>Foyer Notre Dame House</b></p> <p><b>Mandate</b></p>
<p>Programs</p>	<p>Provide safe and short-term housing, basic necessities, supportive counselling and a referral service which will encourage female youth between 16-19 years of age to return home, to remain or return to school and to rebuild their lives</p>
<p>Financing</p>	
<p>Statistics</p>	<p><u>Top</u></p>
<p>Board of Directors</p>	<p><b>Description</b></p>
<p>Contact Us...</p>	<p><b>Foyer Notre Dame House</b> is a fully bilingual program designed to assist homeless female youth between the ages 16 to 19. FNDH programming goals are to assist each youth in achieving family reintegration, to undergo functional life skills training, to achieve vocational scholastic reintegration and to reach self-sufficiency and personal independence.</p>
<p>To Donate...</p>	
<p>Site map</p>	<p>These goals are met by the young person's desire to change and their commitment to a comprehensive goal-oriented individualized program plan.</p> <p><u>Top</u></p> <p><b>Criteria for Admission</b></p> <p>Youth needing shelter must be deemed homeless and/or be in a crisis situation requiring emergency shelter. Individuals who meet the criteria for services may present themselves at the shelter. Individuals may also be referred by community agencies, parents or friends.</p>

[Top](#)

## **Community Outreach Program**

### **Mandate**

Help alleviate absolute and relative homelessness in the City of Greater Sudbury.

[Top](#)

### **Description**

The Community Outreach Program provides outreach services to men, women and youth who are homeless, or who are at risk of becoming homeless. The Outreach team is fully versatile and is



comprised of men and women of Anglophone, Francophone and First Nations origins. Direct client services are provided which include referral to community resources, suicide intervention, immediate first aid, health support, and transportation to essential services such as emergency care, crisis prevention and intervention. Community Outreach also provides blankets, clothing and supplies to those in need.

[Top](#)

### **Outreach in Action**

A team of trained Outreach Workers go out into the streets of Sudbury on a daily basis and provide services to individuals in need. The workers are easily identifiable by their bright red jackets and t-shirts labelled OUTREACH WORKER. These workers encourage and assist individuals making them aware of the options and services offered in our community.

[Top](#)

## **Teen Moms**

### **Mandate**

Provide safe and short-term housing, basic necessities,

supportive counselling and a referral service which will enable a young mom between the ages of 16-19, to develop parenting skills, to return or remain in school, to establish a support system and to live independently.

[Top](#)

### **Description**

The goal of the program is to provide safe and short-term housing, the basic necessities, supportive counselling and a referral service which will enable a young mother between 16-19 years of age, to develop parenting skills, to return or remain in school, to establish a support network and to live independently.

[Top](#)

### **Criteria for Admission**

Pregnant teens and teen moms in need of shelter must be deemed homeless and/or in a crisis situation and require emergency shelter. Individuals who meet the criteria for services may present themselves at the shelter. Individuals may also be referred by community agencies, parents or friends.

The young mom's baby must be no older than six months of age.

[Top](#)

---

Website development courtesy of  
[Sénécal & Associates](#)



# L'Association des jeunes de la rue

## Financing

Français

Mission Statement

Background

Programs

Financing

Statistics

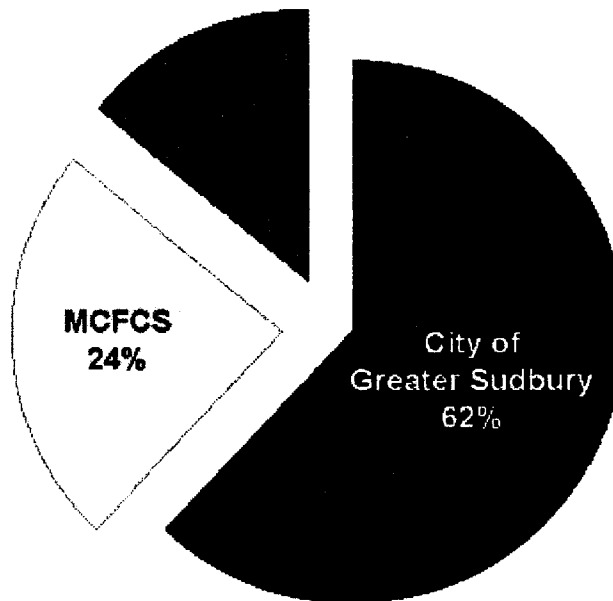
Board of Directors

Contact Us...

To Donate...

Site map

FNDH's base funding is provided by the City of Greater Sudbury, the Ministry of Community, Family and Children Services, and through fundraising, donations and other projects. Without these funds the programs delivered by the Association des jeunes de la rue could not operate efficiently. It is also important to note that the funds generated from fundraising activities, donations and other projects are essential to the survival of all of the association's programs. The staff and members of the board of directors are always seeking new sources of revenues to balance the operating budget.



City of Greater Sudbury	62 %
MCFCS	24 %
Others	14 %

Website development courtesy of Sénécal & Associates



# L'Association des jeunes de la rue

## Statistics

Français

- Occupancy Rate
- Number of Clients
- Community Outreach Program

Mission Statement

Background

Programs

Financing

Statistics

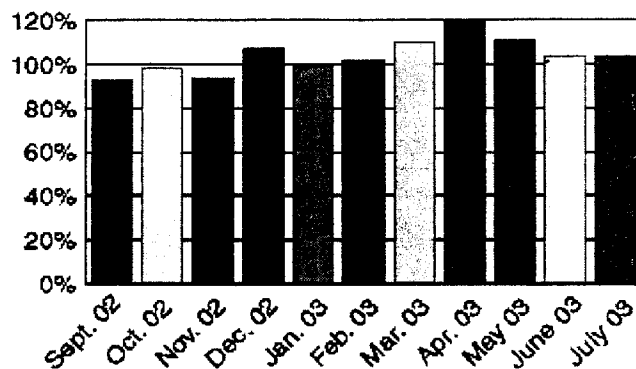
Board of Directors

Contact Us...

To Donate...

Site map

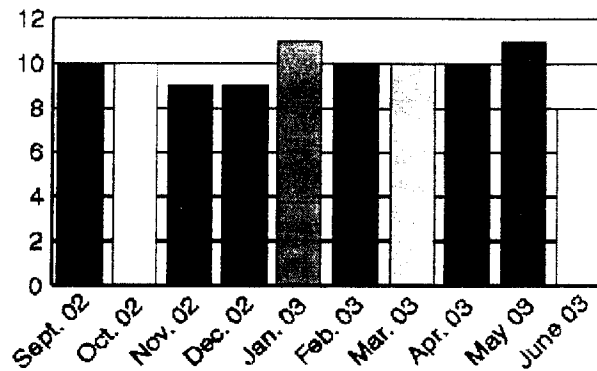
### Occupancy Rate



Month	Rate (%)
September 2002	93
October 2002	98
November 2002	94
December 2002	107
January 2003	99
February 2003	102
March 2003	110
April 2003	120
May 2003	111
June 2003	104
July 2003	104

Top

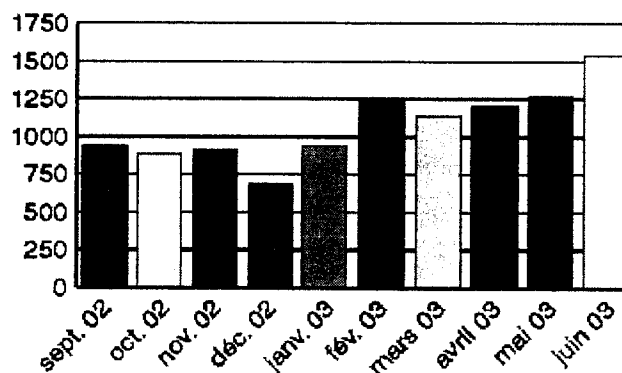
### Number of Clients



Month	Number
September 2002	10
October 2002	10
November 2002	9
Decembreer	9
January 2003	11
Febuary 2003	10
March 2003	10
April 2003	10
May 2003	11
June 2003	8

Top

### Community Outreach Program Number of Contacts



Month	Number
September 2002	939
October 2002	888
November 2002	917
December 2002	679
January 2003	945
Febuary 2003	1226

M 167

March 2003	1140
April 2003	1200
May 2003	1271
June 2003	1540

[Top](#)

---

Website development courtesy of  
[Sénécal & Associates](#)

M 158





# L'Association des jeunes de la rue

## Board of Directors

Français

### Members of the Board of Directors

Mission Statement	<b>President</b> Jean LeBlanc
Background	<b>Treasurer</b> Albini LeBlanc
Programs	<b>Secretary</b> Raymonde Fournier
Financing	<b>Director</b> Marie-Thérèse Mvilongo
Statistics	<b>Director</b> Marcel Lefebvre
Board of Directors	<b>Director</b> Georgette Mitchell
Contact Us...	<b>Director</b> Chantal Lafleur
	<b>Director</b> Lise Denis

To Donate...

### Contacts

Site map

**Accounting Services**  
Thérèse Grandmont

**Executive Director**  
Lise Sénécal

---

Website development courtesy of  
Sénécal & Associates



# L'Association des jeunes de la rue

Contact Us

Français

Mission Statement

Background

Programs

Financing

Statistics

Board of Directors

Contact Us...

To Donate...

Site map



213 Pine Street  
Sudbury (Ontario)  
P3C 1X4

tel. : (705) 675-6422  
fax. : (705) 675-1719

[info@jeunesdelarue.ca](mailto:info@jeunesdelarue.ca)

---

Website development courtesy of  
Sénécal & Associates



# L'Association des jeunes de la rue

To Donate

Français

To make a donation, please download and print the form in one of the formats found below (click on the desired format).

Mission

Statement

Background

Programs

Financing

Statistics

Board of Directors

Contact Us...

To Donate...

Site map

- [PDF<sup>1</sup>](#) (316 KB)
- [Microsoft® Word® ".doc" format](#) (19 KB)
- [plain ASCII text format](#) (903 bytes)
- [Printable HTML format](#) (1913 bytes)

<sup>1</sup> To view the PDF file, you will need [Adobe® Reader®](#). If you do not already have Adobe® Reader®, you can download it free of charge from the [Adobe® website](#).

---

Website development courtesy of  
[Sénécal & Associates](#)

M 171



**ENGLISH**

**FRANÇAIS**

Site web  
[www.jeunesdelarue.ca](http://www.jeunesdelarue.ca)

M172



# L'Association des jeunes de la rue

## Mission

[English](#)

Mission

Historique

Programmes

Financement

Statistiques

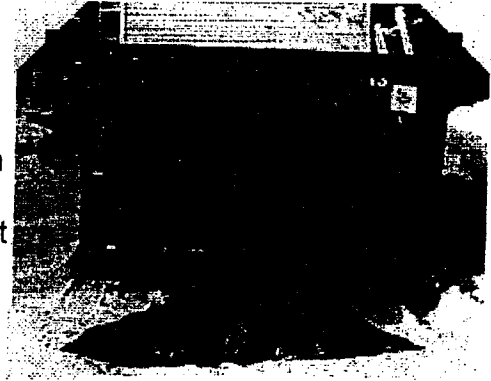
Conseil  
d'administration

Pour nous  
joindre...

Pour faire un  
don...

Carte du site

**L'Association des jeunes de la rue** est un organisme à but non lucratif qui vient en aide à la population des sans abri en offrant une gamme de services dirigée à l'intervention, la réintégration et la réadaptation sociale et communautaire.



---

Conception du site web, gracieuseté de  
[Sénécal & Associé.e.s](#)



# L'Association des jeunes de la rue

## Historique

English

Mission

Historique

Programmes

Financement

Statistiques

Conseil  
d'administration

Pour nous  
joindre...

Pour faire un  
don...

Carte du site

**L'Association des jeunes de la rue** a été incorporée en 1992. À l'époque les services aux sans-abri se limitaient aux hommes adultes, mais le problème social c'était répandu aux adolescent(e)s forcé(e)s à vivre dans la rue face à de nombreux problèmes sociaux.

Malheureusement, les jeunes de 16 et 17 ans ont été oubliés dans le système social qui devait maintenir notre société en sécurité. Ces jeunes personnes ne peuvent recevoir de l'aide de la Société de l'Aide à l'enfance car elles sont trop vieilles et elles ne rencontrent pas les critères de l'assistance sociale car elles sont trop jeunes. Étant d'un âge trop avancé pour être considéré des enfants et trop jeunes pour être d'une catégorie adulte, le seul choix pour plusieurs de ces jeunes personnes est de quitter le foyer et de s'aventurer vers la rue. Alors, un groupe de citoyens de Sudbury, conscient de ce problème, entreprend de relever le défi et d'améliorer le sort de ces individus. Ils réussissent à trouver du logement, de la nourriture, des vêtements et du counselling. Comme tout nouveau programme, la première année s'avère très difficile, Les argentés suffisent difficilement à payer le loyer du petit logis de trois chambres qui plus tard devient le Foyer Notre Dame House. Tous les autres services dépendent de la générosité des individus et des agences qui fournissent de la nourriture et des dons monétaires. Au début, les membres du personnel du foyer sont des bénévoles qui croient fortement dans la mission que s'est donnée le Conseil d'administration.

Dès la première année, au-delà de 50 jeunes filles et garçons reçoivent de l'aide.



Malheureusement, sans fonds permanents, le Foyer Notre Dame House doit fermer ses portes en 1994, pour une période d'un an. Grâce à la ténacité des membres du Conseil d'administration et d'un emprunt généreux de la communauté religieuse des Sœurs grises, une maison pouvant loger jusqu'à 11 personnes est achetée et le projet est remis en marche. Le conseil embauche des employés à temps plein et à temps partiel ainsi qu'un directeur étant responsable de prélever des fonds des ministères et de sources privées.

Les résident(e)s peuvent demeurer au foyer pour une période de trois mois ou moins. Durant ce séjour au foyer, les jeunes personnes reçoivent du counselling de plusieurs agences desservant les adolescent(e)s de Sudbury, en guise de leurs aider à surmonter leurs problèmes.

---

Conception du site web, gracieuseté de  
Sénécal & Associé.e.s



# L'Association des jeunes de la rue

## Programmes

English

- Foyer Notre Dame House
- Programme Communautaire Outreach
- Jeunes mères célibataires

Mission

Historique

Programmes

Financement

Statistiques

Conseil  
d'administration

Pour nous  
joindre...

Pour faire un  
don...

Carte du site

### Foyer Notre Dame House

#### Mandat

Offrir aux jeunes femmes de 16 à 19 ans un gîte sécuritaire de courte durée, les services de base, du counselling et une orientation dirigée à renforcer le désir de ces participantes de se réunir à leur famille.

Haut

#### Description

**Foyer Notre Dame House** se veut un programme bilingue à l'aide de jeunes femmes de 16 à 19 ans. Le but du foyer est d'aider chaque jeune personne à réintégrer sa famille, à reprendre ses études ou un programme d'apprentissage et acquérir une autonomie fonctionnelle en vue d'atteindre l'indépendance et l'autosuffisance.

Pour atteindre ces buts la jeune personne, avec le soutien d'un plan personnel compréhensif axé sur ces mêmes objectifs, doit démontrer le vouloir d'apporter un changement à son style de vie.

Haut

#### Les critères d'admission

Les jeunes femmes en besoin de refuge doivent rencontrer les critères de sans abri et/ou être en état de crise. Ces personnes en besoin peuvent se présenter au Foyer. Les agences communautaires, les parents et les ami(e)s de jeunes femmes en besoin peuvent également



faire demande au Foyer pour le l'aide.

Haut

## **Programme Communautaire Outreach**

### **Mandat**

Aider à améliorer la situation absolue et relative des sans-abri dans la ville du Grand Sudbury.

Haut

### **Description**

Le programme « Outreach » fournit de l'aide aux femmes, hommes et aux jeunes personnes qui sont sans abri ou qui risquent de le devenir.

#### **L'équipe**

Outreach consiste de personnes bilingues et d'origine anglaise, française et amérindienne. Le programme inclut un service de liens aux ressources communautaires, un programme axé sur la prévention au suicide, des premiers soins immédiats, de l'aide médicale, de la transportation aux services essentiels et un service de prévention et d'intervention de crise. Le programme Outreach est un service communautaire qui fournit aussi des couvertures, des vêtements et des produits alimentaires.



Haut

### **Outreach en action**

À chaque semaine, l'équipe de travailleurs et travailleuses Outreach parcourt les rues de la ville du Grand Sudbury pour offrir ses services à des individus en difficulté. On identifie facilement nos travailleurs et travailleuses par leurs t-shirts et leurs vestons rouge vif sur lesquels est inscrit « Travailleur Outreach ». Les membres de l'équipe encouragent et aident les sans abri à prendre connaissance des choix et des services qui sont disponibles dans notre communauté.

Haut

## **Jeunes mères célibataires**

### **Mandat**

Offrir aux jeunes mères de 16 à 19 ans un gîte sécuritaire de courte durée, les nécessités absolues, du counselling et un service de recommandation.

Haut

### **Description**

Nous offrons, au fille mère seule ou au adolescente enceinte âgée de 16 à 19 ans, un logement sécuritaire à court terme, les nécessités absolues, un soutien individuel et un service de recommandation aux agences communautaires. Ces services visent à leur permettre de développer de bonnes techniques parentales, de les inciter à retourner ou de rester à l'école, ainsi qu'établir un réseau de soutien et de vivre de façon indépendante.

Haut

### **Les critères d'admission**

Adolescente enceinte ou fille mère sans abri ou en état de crise et qui nécessite un logement d'urgence. La personne qui remplit ces critères peut se présenter elle-même au Foyer Notre Dame House. Une jeune personne peut également être recommandée par une agence communautaire, ses parents ou ami(e)s. L'enfant accompagnant la mère seule doit être d'âge inférieur à 6 mois.

Haut

---

Conception du site web, gracieuseté de  
Sénécal & Associé.e.s



# L'Association des jeunes de la rue

## Programmes

English

- Foyer Notre Dame House
- Programme Communautaire Outreach
- Jeunes mères célibataires

Mission

Historique

Programmes

Financement

Statistiques

Conseil  
d'administration

Pour nous  
joindre...

Pour faire un  
don...

Carte du site

### Foyer Notre Dame House

#### Mandat

Offrir aux jeunes femmes de 16 à 19 ans un gîte sécuritaire de courte durée, les services de base, du counselling et une orientation dirigée à renforcer le désir de ces participantes de se réunir à leur famille.

Haut

#### Description

**Foyer Notre Dame House** se veut un programme bilingue à l'aide de jeunes femmes de 16 à 19 ans. Le but du foyer est d'aider chaque jeune personne à réintégrer sa famille, à reprendre ses études ou un programme d'apprentissage et acquérir une autonomie fonctionnelle en vue d'atteindre l'indépendance et l'autosuffisance.

Pour atteindre ces buts la jeune personne, avec le soutien d'un plan personnel compréhensif axé sur ces mêmes objectifs, doit démontrer le vouloir d'apporter un changement à son style de vie.

Haut

#### Les critères d'admission

Les jeunes femmes en besoin de refuge doivent rencontrer les critères de sans abri et/ou être en état de crise. Ces personnes en besoin peuvent se présenter au Foyer. Les agences communautaires, les parents et les ami(e)s de jeunes femmes en besoin peuvent également

faire demande au Foyer pour le l'aide.

Haut

## **Programme Communautaire Outreach**

### **Mandat**

Aider à améliorer la situation absolue et relative des sans-abri dans la ville du Grand Sudbury.

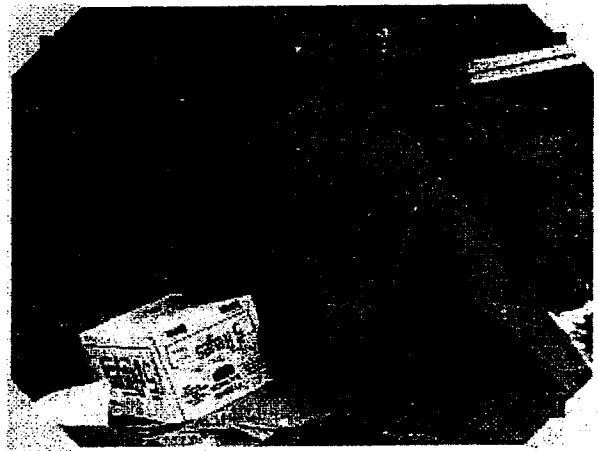
Haut

### **Description**

Le programme « Outreach » fournit de l'aide aux femmes, hommes et aux jeunes personnes qui sont sans abri ou qui risque de le devenir.

L'équipe

Outreach consiste de personnes bilingues et d'origine anglaise, française et amérindienne. Le programme inclut un service de liens aux ressources communautaires, un programme axé sur la prévention au suicide, des premiers soins immédiats, de l'aide médicale, de la transportation aux services essentiels et un service de prévention et d'intervention de crise. Le programme Outreach est un service communautaire qui fournit aussi des couvertures, des vêtements et des produits alimentaires.



Haut

### **Outreach en action**

À chaque semaine, l'équipe de travailleurs et travailleuses Outreach parcourt les rues de la ville du Grand Sudbury pour offrir ses services à des individus en difficulté. On identifie facilement nos travailleurs et travailleuses par leurs t-shirts et leurs vestons rouge vif sur lesquels est inscrit « Travailleur Outreach ». Les membres de l'équipe encouragent et aident les sans abri à prendre connaissance des choix et des services qui sont disponibles dans notre communauté.

Haut

## **Jeunes mères célibataires**

### **Mandat**

Offrir aux jeunes mères de 16 à 19 ans un gîte sécuritaire de courte durée, les nécessités absolues, du counselling et un service de recommandation.

Haut

### **Description**

Nous offrons, au fille mère seule ou au adolescente enceinte âgée de 16 à 19 ans, un logement sécuritaire à court terme, les nécessités absolues, un soutien individuel et un service de recommandation aux agences communautaires. Ces services visent à leur permettre de développer de bonnes techniques parentales, de les inciter à retourner ou de rester à l'école, ainsi qu'établir un réseau de soutien et de vivre de façon indépendante.

Haut

### **Les critères d'admission**

Adolescente enceinte ou fille mère sans abri ou en état de crise et qui nécessite un logement d'urgence. La personne qui remplit ces critères peut se présenter elle-même au Foyer Notre Dame House. Une jeune personne peut également être recommandée par une agence communautaire, ses parents ou ami(e)s. L'enfant accompagnant la mère seule doit être d'âge inférieur à 6 mois.

Haut

---

Conception du site web, gracieuseté de  
Sénécal & Associé.e.s



# L'Association des jeunes de la rue

## Financement

English

Mission

Historique

Programmes

Financement

Statistiques

Conseil  
d'administration

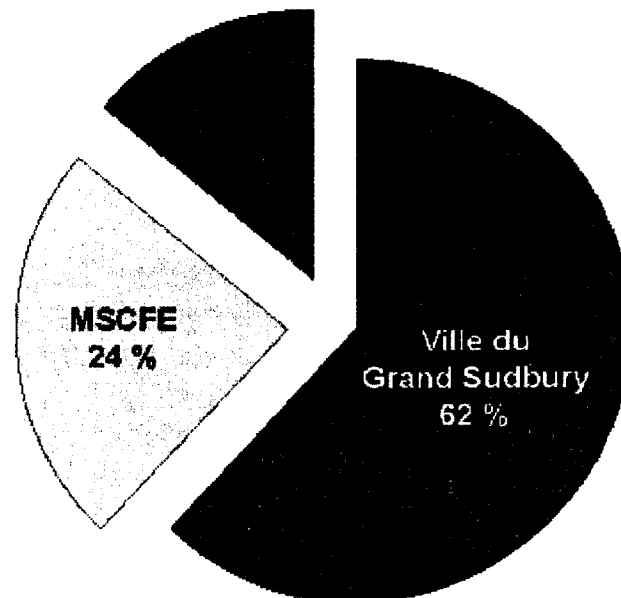
Pour nous  
joindre...

Pour faire un  
don...

Carte du site

Notre financement provient, en partie, de la Ville du Grand Sudbury, du Ministère des services à la collectivité et de la Société d'aide à la famille et à l'enfance, ainsi que des prélèvements de fonds, des dons et autres.

Les programmes parrainés par l'Association des jeunes de la rue dépendent entièrement sur ces sources de financement pour fournir des services efficaces. Il est important de noter que les argent provenant du prélèvement de fonds, des dons et autres sont essentiels à la survie de tous les programmes de l'Association. Les membres du personnel et du conseil d'administration recherchent activement des enveloppes d'argent qui viendront améliorer la situation budgétaire de l'Association et assurer la survie des programmes offerts aux jeunes personnes sans abri.



Ville du Grand Sudbury	62 %
MSCFE	24 %
Autres	14 %



# L'Association des jeunes de la rue

## Statistiques

[English](#)

- [Taux d'occupation](#)
- [Nombre d'admissions](#)
- [Programme Communautaire Outreach](#)

Mission

Historique

Programmes

Financement

Statistiques

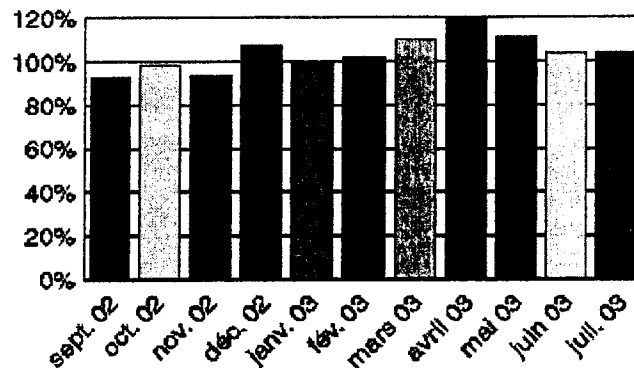
Conseil d'administration

Pour nous joindre...

Pour faire un don...

Carte du site

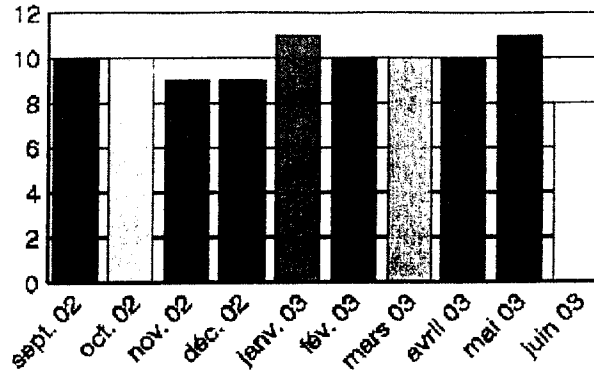
### Taux d'occupation



Mois	Taux (%)
Septembre 2002	93
Octobre 2002	98
Novembre 2002	94
Décembre 2002	107
Janvier 2003	99
Février 2003	102
Mars 2003	110
Avril 2003	120
Mai 2003	111
Juin 2003	104
Juillet 2003	104

[Haut](#)

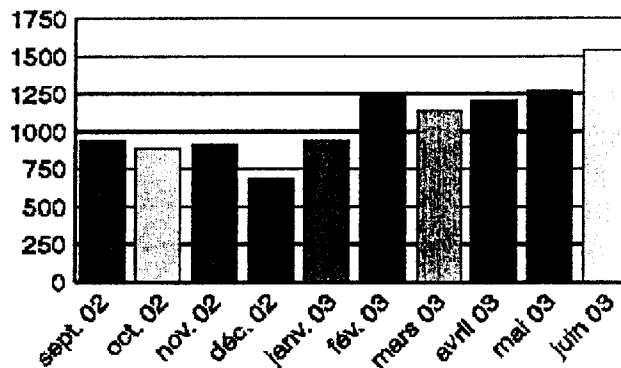
### Nombre d'admissions



Mois	Nombre
Septembre 2002	10
Octobre 2002	10
Novembre 2002	9
Décembre 2002	9
Janvier 2003	11
Février 2003	10
Mars 2003	10
Avril 2003	10
Mai 2003	11
Juin 2003	8

Haut

**Programme Communautaire Outreach  
Nombre de contacts**



Mois	Nombre
Septembre 2002	939
Octobre 2002	888
Novembre 2002	917
Décembre 2002	679
Janvier 2003	945
Février 2003	1226



Mars 2003	1140
Avril 2003	1200
Mai 2003	1271
Juin 2003	1540

[Haut](#)

---

Conception du site web, gracieuseté de  
Sénécal & Associé.e.s



# L'Association des jeunes de la rue

## Conseil d'administration

English

### Membres du conseil d'administration

Mission	<b>Président</b> Jean LeBlanc
Historique	<b>Trésorier</b> Albini LeBlanc
Programmes	<b>Secrétaire</b> Raymonde Fournier
Financement	<b>Conseillère</b> Marie-Thérèse Mvilongo
Statistiques	<b>Conseiller</b> Marcel Lefebvre
Conseil d'administration	<b>Conseillère</b> Georgette Mitchell
Pour nous joindre...	<b>Conseillère</b> Chantal Lafleur
Pour faire un don...	<b>Conseillère</b> Lise Denis

### Personnes Ressources

Carte du site	<b>Gestion financière</b> Thérèse Grandmont
	<b>Directrice générale</b> Lise Sénécal

---

Conception du site web, gracieuseté de  
Sénécal & Associé.e.s



# L'Association des jeunes de la rue

Pour nous rejoindre

En

Mission

Historique

Programmes

Financement

Statistiques

Conseil  
d'administration

Pour nous  
joindre...

Pour faire un  
don...

Carte du site



213, rue Pine  
Sudbury (Ontario)  
P3C 1X4

tel. : (705) 675-6422  
telec. : (705) 675-1719

[info@jeunesdelarue.ca](mailto:info@jeunesdelarue.ca)

---

Conception du site web, gracieuseté de  
Sénécal & Associé.e.s



# L'Association des jeunes de la rue

## Pour faire un don

[English](#)

Pour faire un don, veuillez télécharger et imprimer le formulaire dans un des formats identifiés ci-bas (cliquez sur le format désiré).

Mission

Historique

- [Format PDF<sup>1</sup>](#) (317 ko)
- [Microsoft® Word® « .doc »](#) (20 ko)
- [texte ASCII](#) (1018 octets)
- [Format HTML](#) (2138 octets)

Programmes

Financement

<sup>1</sup> Pour visualiser le document PDF, vous devez avoir [Adobe® Reader®](#). Si vous ne possédez pas déjà [Adobe® Reader®](#), vous pouvez le télécharger gratuitement à partir du site web [Adobe®](#).

Statistiques

Conseil  
d'administration

Pour nous  
joindre...

Pour faire un  
don...

Carte du site

---

Conception du site web, gracieuseté de  
[Sénécal & Associé.e.s](#)

## L'Association des jeunes de la rue

1. Je désire contribuer à votre œuvre.

2. Veuillez encercler le montant que vous voulez donner :

10\$    20\$    50\$    100\$    1000\$    Autre : \_\_\_\_\_ \$

3. A fin de recevoir un reçu pour fins d'impôts, veuillez imprimer votre nom et adresse complète.

À NOTER : Nous regrettons de ne pouvoir émettre un reçu pour fins d'impôts pour moins de 10\$.

Nom : \_\_\_\_\_

Adresse : \_\_\_\_\_

Ville : \_\_\_\_\_ Province : \_\_\_\_\_ Code Postal : \_\_\_\_\_

4. Veuillez retourner ce formulaire dûment rempli avec un chèque ou mandat de poste pour le montant indiqué ci-haut, à l'ordre de :

**L'Association des jeunes de la rue**

**213, rue Pine**

**Sudbury (Ontario)**

**P3C 1X4**

Pour plus de renseignements, communiquez avec Lise Sénécal au (705) 675-6422.



# L'Association des jeunes de la rue

## Carte du site

English

Mission

Historique

Programmes

Financement

Statistiques

Conseil  
d'administration

Pour nous  
joindre...

Pour faire un  
don...

Carte du site

- Mission
- Historique
- Programmes
  - Foyer Notre Dame House
    - Mandat
    - Description
    - Les critères d'admission
  - Programme Communautaire Outreach
    - Mandat
    - Description
    - Outreach en action
  - Jeunes mères célibataires
    - Mandat
    - Description
    - Les critères d'admission
- Financement
- Statistiques
  - Taux d'occupation
  - Nombre d'admissions
  - Programme Communautaire Outreach
- Conseil d'administration
- Pour nous joindre
- Pour faire un don

---

Conception du site web, gracieuseté de  
Sénécal & Associé.e.s

Peggy Byers, Canadian Red Cross, 674-0737, ext 35

The Canadian Red Cross provides 3 main services: 1. housing registry which provides a weekly listing of lower priced rental units in the Greater Sudbury area. This list is used by individuals as well as other agencies. 2. The Homelessness Initiative (rent bank) provides financial assistance to end evictions, to end disconnections of essential utilities. 3. The Red Cross also does client assessments for the Social Planning Council as well as referrals to other agencies.

We give assistance only to those in need. The Red Cross conducts a thorough interview with our clients and we also research information given to us by clients. We research other options for payment, such as creating solution with Social planning council, Ontario works, Ontario disability support program, as well as service clubs.

When asked if clients were satisfied with Red Cross assistance, here is what some people said: "Yes Red Cross Got results! My hydro had been disconnected for two months," from single mother of three children, one who was ill. "Yes, very much, we would have been on the street," from single father of two children.

At The Red Cross, we also negotiate with utility companies to create payment plans that clients can follow, negotiate disconnection schedules to allow clients to make arrangements. Red Cross have modified our policies here to stop providing first and last month's rent because it was using up too much of our financial recourses. We have successfully negotiated with many landlords to remove the last month rent stipulation. The Red Cross participates on the Task force on Homelessness as well as subcommittees of that task force and the Community Emergency Fund committee.

By financially assisting clients, we are saving money by keeping people out of shelters. According to YWCA, it costs \$51.37 to \$102.00 a day to house someone at the shelter, depending on programming levels. With \$300 in emergency financial assistance, we help people stay in their own homes, providing a long term solution to permanent housing. Since we don't have family shelters in Sudbury, Red Cross also helps families stay together.

The usage of our services has increased exponentially from its inception. In 1999, we assisted 781 clients. In 2003, the number of people we assisted increased to 2202. This represents an increase of 182 percent. Dollars disbursed in the same time period have increased from \$8,717 to \$32,503, showing an increase of 273 percent. As a result, we are requesting \$39,804 to further support the Red Cross Homelessness Initiative to meet the needs of our most vulnerable citizens.

We predict that based on current trends, the Red Cross will receive 5000 requests for assistance in 2004. At this time, we are requesting: \$20,000 for direct client assistance, \$17,304 for a part time assistant (20 hours per week), and \$2,500 for office supplies, IT support, Accounting and other administrative costs related to the program.

These costs may seem prohibitive, but compared to the financial costs of housing someone in a shelter, these costs are minimal, and the families maintain their current housing, thereby preventing homelessness. In terms of human costs, the families are not separated and human dignity is maintained. The families are not faced with living in a shelter for a period of time while they search to find new housing. The Rent Bank is a simple solution to avoid homelessness.

To meet demand:	Enhancement request 2004 City of Greater Sudbury	\$39,804
For service	City of Greater Sudbury Homelessness Initiative	27,800
	City of Greater Sudbury Off the Street and into a Shelter	28,310
	United Way	40,000
	Canadian Red Cross fund raising	5,290
	Total	\$141,204

M 191

# **ADANAC TERRAIN PARK PROPOSAL**

**Prepared by: Adrian Gedye  
On behalf of Pinnacle Sports Marketing Inc.**



The following proposal details a partnership between the City of Greater Sudbury and Pinnacle Sports Marketing Inc. with respect to Adanac Ski Hill. Pinnacle Sports Marketing Inc. is proposing the creation of a ski and snowboard terrain park at Adanac Ski Hill. The terrain park will be a safe and independently-run facility catering to the rapidly-expanding sports of freestyle skiing and snowboarding, with the goal of promoting and enhancing winter recreation amongst the community. The main user demographic will be male and female snowboarders ages 12 to 21.

### **I: Creation of a Snowboard Terrain Park**

The terrain park will be exclusive to trick skiing and snowboarding. Although it will be fully functional without the use of any type of ski lift, it will be adaptable for use with any type of ski lift in the future.

From 1999 until 2003, Pinnacle Sports Marketing Inc. was directly involved in the design, maintenance, opening and operation of a smaller scale park at Adanac, where it successfully functioned as part of the hill's regular operation. The proposed facility will operate in a controlled environment, and will meet or exceed the existing design, operation and risk/liability management requirements of terrain parks. In the event of Adanac re-opening as a full ski/snowboard facility, the terrain park would easily be integrated into any new hill design as a separate run.

### **II: Maintenance and Construction of the Terrain Park**

The maintenance and the quality of jumps and skill areas within the park will determine to a great extent the park's popularity. Without the use of a lift, snowboarders will be required to climb the hill, therefore, it is imperative that the terrain park meets and exceeds the customers' expectations, thus making it worth their efforts. As large concentrated amounts of snow will be required to create and maintain jumps and skill areas, snow-making equipment as well as the use of a groomer will be required. Two city employees will be required for a two week period in order to construct the park.

### **III: Operation of Pinnacle Sports Lesson Programs and Rental Equipment**

Pinnacle Sports Marketing Inc. has been a corporate partner with the City of Greater Sudbury at Adanac Ski Hill since 1999. During this time Pinnacle Sports Marketing Inc. was responsible for the development of the ski and snowboard instruction school at Adanac Ski Hill and successfully ran all lessons and Board of Education recreation programs. The company has purchased an entire rental fleet to run these programs.

The contractual agreement that was in place governing the partnership between Pinnacle Sports Marketing Inc. and the City of Greater Sudbury from 1999 to 2003 would be renewed as per the pre-existing terms.

**IV: Subletting of the Property to Pinnacle Sports Marketing Inc.**

The Adanac Ski Hill property as set out in the Leasing agreement between the Nickel District Conservation Authority and the City of Greater Sudbury will be sublet to Pinnacle Sports Marketing Inc. for the period ending April 30, 2004 at a total cost of one dollar.

Overall, the creation of a terrain park and lesson programs would be a key addition to fitness and wellness within the Sudbury community. With the closure of Adanac ski hill many of our community's families and youth are now having to travel out of our city to enjoy ski and snowboard recreation while many others have entirely discontinued participating in such winter recreation. The terrain park would also serve as a smooth transition phase should the full re-opening of Adanac ski hill occur in the future and would contribute greatly to the success of the new ski hill.

Please see the attached document which outlines the budget for the terrain park and lesson school.

<b>Terrain Park and Lesson School Budget</b>	
<b>Estimated Gross Receipts</b>	<b>Cost (\$)</b>
Pass Tickets	10,000.00 (1)
Equipment Rental	2,400.00 (2)
Ski and Snowboard School	9,040.00 (3)
<b>Total Gross Receipts</b>	<b>21,440.00</b>
<b>Expenses</b>	
Advertising	2,000.00 (4)
Hydro	5,000.00 (5)
Insurance	17,500.00 (6)
Payroll (City of Sudbury)	2,741.12 (7)
Payroll	16,409.00 (8)
Plowing	1,000.00 (9)
Supplies	500.00 (10)
Telephone	850.00 (11)
Terrain Park materials	2,972.00 (12)
Water	3,000.00 (13)
<b>Total Expenses</b>	<b>51,972.00</b>
<b>Profit/Loss</b>	<b>(30,532.12)</b>

It should be noted that the Profit/Loss figures in the above budget indicate a shortfall of \$30,532.12. This figure does not take into account a previous investment made by Pinnacle Sports Marketing Inc. of \$34,535.00 for ski and snowboard equipment that will be utilized in the proposed operation for all lessons and rentals. Pinnacle Sports Marketing Inc. is requesting the City of Greater Sudbury to provide it with an operating budget of \$27,791.00 and a City of Greater Sudbury payroll grant of \$2,741.12. With this Operating Budget and payroll grant in place for 2004, the Terrain Park will open in December 2004.

<b>Notes to Cashflow Budget</b>
---------------------------------

**Estimated Gross Receipts**

1. 1000 user visits at \$10.00 per visit = \$10, 000.00
2. Average annual rental figures over previous four years for lesson and snowboard rentals at Pinnacle Sports rental outlet at Adanac Ski Hill.
3. Average annual lesson figures over previous four years of Pinnacle Sports lesson school at Adanac ski hill.

**Expenses**

4. Based on special sponsorship rate for season arranged with Rogers Radio (Q92, Mix 105, CIGM).
5. Figures based on 2003 hydro consumption for facilities that will be in use during the proposed 11 week operation period.
6. Quotation provided by Mr. Robert Bell, head of Ski Resort risk management team at R.L. Gougeon Insurance.
7. Two week pay rate for one Ski Utility Person and one Ski Hill Utility Person Helper. These rates are as per the City of Greater Sudbury standard wages of \$18.44 per hour and \$11.59 per hour for those positions. The payroll is calculated at 80 hours per employee and includes fringes of 14.1%
8. Pinnacle Sports payroll figures are as follows:
  - Rental equipment tuning and set up 80 hours at \$9.00 per hour = \$720.00
  - Terrain Park construction: 160 hours at \$10.00 per hour = \$1600.00
  - Terrain Park maintenance: 330 hours at \$10.00 per hour = \$3, 300.00
  - Rental Shop: 451 hours at \$9.00 per hour = \$4, 059.00
  - Park Monitor: 220 hours at \$10.00 per hour = \$2, 200.00
  - Ski and Snowboard Instruction: 450 hours at \$10.00 per hour = \$4, 500.00
9. Plowing: Includes plowing, salting and sanding of Adanac parking lot and service road. Based on previous contract rate of \$50.00 per visit with 20 visits per year.
10. Estimated supply budget including but not limited to: stationary, photocopying, pass tickets and lesson level pins.
11. Telephone: Installation of point of sale telephone line and regular telephone line and phone charges for a 12-week period.
12. Terrain Park Materials: Costs include lowest tenders received to date on purchase price of rails, signage, additional fencing and other terrain park specific materials.
13. Water: Based on past Adanac Ski Hill water readings as per 80 hours of snowmaking. Also includes regular water consumption used during past Adanac winter operational periods and calculated on an 11-week operational period.

December 2003

City of Greater Sudbury

**RE: Overcomers Support Group of Sudbury Enhancement Request**

The Overcomers Support Group of Sudbury Inc. is respectively seeking the amount of \$100,000.00 from the City of Greater Sudbury, to assist in funding a satellite services network within our community. We will begin by funding a needs assessment study in outlying communities within the city. Once we have completed this assessment we will best know what services to offer in what communities. We will then establish satellite sites that will allow us to facilitate required services

**Community Chaplaincy**

Within the community the community chaplain visits local jails, halfway houses, and youth detention centres spreading the Word of God, which includes monthly services. These services are bible based and lead by Chaplain Mike Mieto as well as two board members from the Overcomers Support Group of Sudbury. Chaplain Mieto also visits the Sudbury Jail to perform weekly services, assisting inmates and their families with spiritual counselling and guidance, as well as supporting and advocating for those inmates who are attending court.

The community chaplain also provides supportive services to those who are currently incarcerated. Assisting both the inmate as well as the inmate's family. Providing 181 inmates with Christmas "goody-bags". Chaplain Mieto also provides 40 families of those institutionalized with food donations and well as Christmas presents for 103 children of inmates.

Chaplain Mieto also provides support services, such as spiritual counselling, obtaining food, clothing and other necessities for life to individuals who are motivated to re-integrate into the community from a needs based institution.

**Poverty**

**Youth Homelessness**

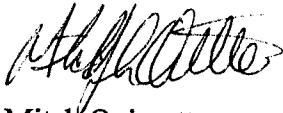
The difficulties facing youth in homeless or near homeless situations are wide and varied. Beyond determining the causes we propose education, to re-enforce healthy life choices to deter crime and homelessness. We currently work in the community to establish positive skill traits with those who are in jeopardy of becoming homeless. We work to establish positive self esteem levels and ensure that regardless of past occurrences we can work to ensure that the youth of the community continue to have an impact in our community and ensure that they will grow to be fully functioning members of a positively based society.

## **Adult Homelessness**

The Overcomers Support Group of Sudbury Inc. is a not-for-profit Christian based organization that assists the adult homeless community, and the community at large. We provide services for those homeless and near homeless people facing challenges such as housing, food, employment and substance abuse, making referrals to local agencies and other community partners. Speaking about our work to organizations, high schools, and community colleges to promote healthy choice lifestyles. We offer the only Christian based 12-step program.

Our request and supporting information for this grant are enclosed. We appreciate your time and energy and look forward to a successful review of our application.

Yours Truly,



**Mitch Ouimette**  
Development Officer

December 2003

## Overcomers Support Group of Sudbury

# Executive Summary

### **Requested Amount**

\$100,000.00

### **Needs Assessment Program**

The needs assessment study is a means for the Overcomers Support group of Sudbury Inc. to appropriately address and weigh the needs of outlying communities. The Overcomers Group within the community of Greater Sudbury will assess the needs of homeless youth and adults, including those who are high risk for homelessness, as well as those who have been institutionalized.

### **Satellite Services Network Project**

Upon completion of the needs assessment we will best know what services are required in what outlying communities. We will then work with other community organizations that are currently based in those communities to bring our services to those clients who are in need of them. We will bring on board 3 staff members for every satellite site that we create. These staff members will be highly trained as is our current staff members to ensure that the highest degree of services can be offered. These facilities will run as independent bodies, but will be administered through one head office, based in the Downtown Core.

### **Reason**

To enhance funding for the Overcomers Group of Sudbury means that we will have the financial resources to employ staff in order to assess the needs of the community, and begin to provide services to the community that will ensure our most difficult to serve citizens have their needs met so that we will be able to assist them to become functioning member of their community and reduce dependence on the social support system. We will have the resources to assess the cultural diversity to ensure that services created for the homeless and near homeless, as well as the institutionalized will best meet their need. We will also have the resources to establish programming that will alleviate socio-economic stress within the community.

## **Qualifications**

The Overcomers Group of Sudbury was established in 1995 to develop assess and resolve the problem of homelessness within the community of Greater Sudbury. Overcomers was built on the foundation of providing help and support services to those who are truly in need, the homeless, near homeless, and those institutionalized. The Overcomers Group of Sudbury has developed a client base of approximately 4000 clients yearly, about half of that number being young people within the community. Our staff members, include qualified social workers, youth workers, community chaplain and many dedicated volunteer who provide an in depth program to assist the clientele in overcoming and resolving their conflicts.

## **Effectiveness**

Since the inauguration of the Overcomers Group of Sudbury, we have worked with the clientele by providing awareness of outside services and support groups within the community. This provides the clients with the tools to secure permanent employment, housing, food and clothing, and mental health issues. We assist in alleviating homelessness within the community through public education. We are developing youth awareness in regards to homelessness so that they are prepared to make healthy lifestyle choices.

## **Benefits**

- Community partnership with high public visibility supporting a vital community service.
- Services that are required within our community will be offered to not only those downtown but also those in outlying areas that truly are in need of our help.
- Regular monitoring and tracking statistics of program results.
- Reduces stresses presently being applied to government social support networks.
- The major benefit of funding this program is to realize that together we produce results, and ultimately **save lives**.

***“For I was hungry and you gave me food; I was thirsty and you gave me drink; I was a stranger and you took me in; I was naked and you clothed me; I was sick and you visited me; I was in prison and you came to me”***

**Matthew 25: 35-36**



**Business Plan & Funding Enhancement Request to**

**City of Greater Sudbury**

**For**

**The Community Needs Assessment Study  
&  
The Satellite Services Network Project**

**From**

**The Overcomers Group of Sudbury Inc.**

**December 2003**

---

The Community Needs Assessment Study  
&  
Satellite Services Network Project

December 2003

---

Table of Contents

I.	Introduction	07
II.	Our History	07
III.	Proactive In All Areas	08
IV.	Volunteer Based and Delivered Programs	09
V.	The Need: Community Assessment Study	09
VI.	The Need: Satellite Services Network	09
VII.	Budget Overview	10
VIII.	Program Implementation 2004	11
XI.	Budget Overview	12
XII.	Structured Implementation: Needs Assessment Study	13
XIII.	Structured Implementation: Satellite Site	13
XIV.	Evaluation and Monitoring	13

Attachments:

- Mission Statement
- List of Board of Directors
- Annual Report
- Programs and Services Brochure