

Lasalle Boulevard Corridor Study



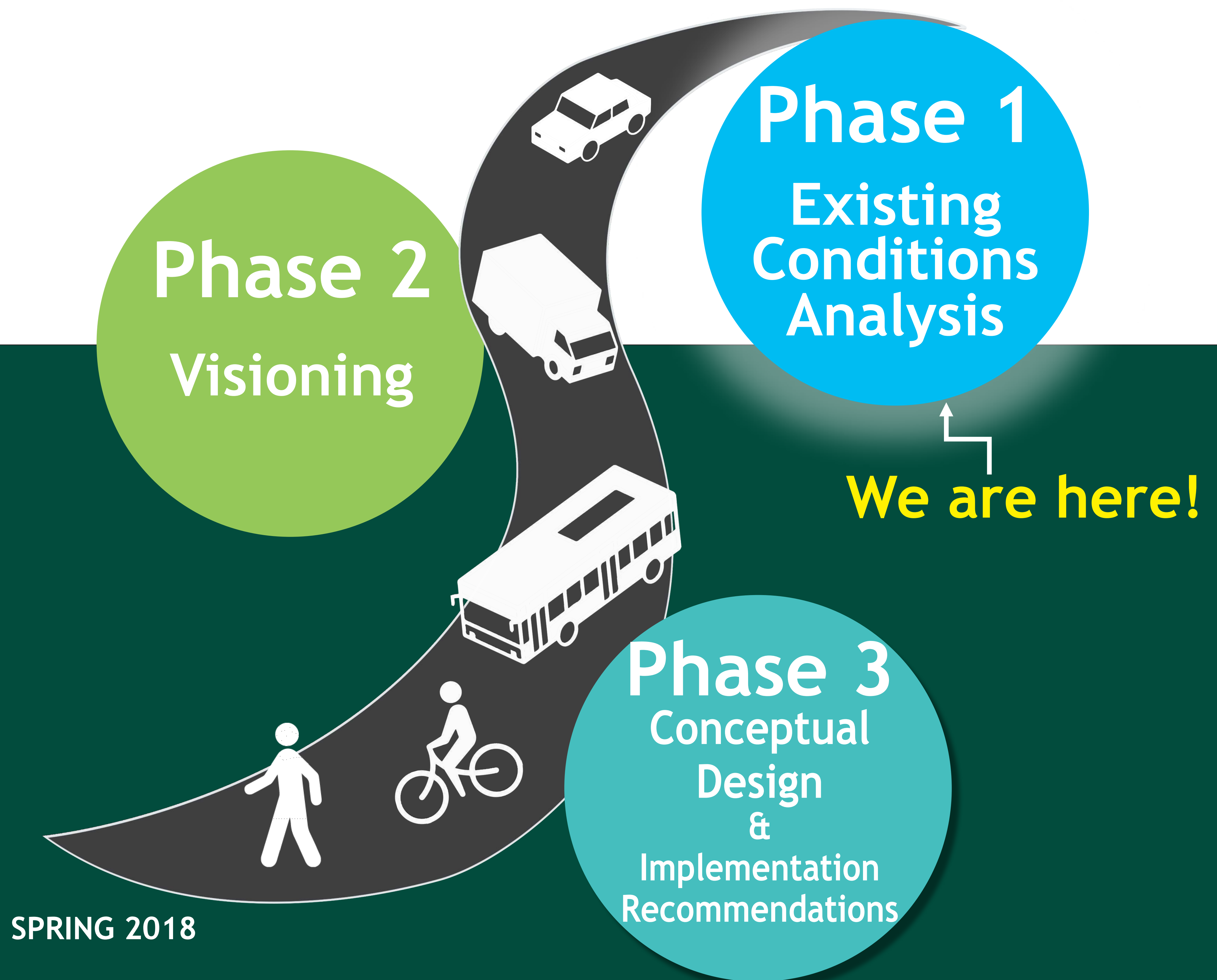
Developing a vision and
plan for the future of
Lasalle Boulevard Corridor

ED LANDRY
Greater Sudbury
E: ed.landry@greatersudbury.ca
T: 705.674.4455 x4298

ROBERT VOIGT
WSP Canada Group Ltd.
E: robert.voigt@wsp.com
T: 647.649.1837

FOLLOW THE STUDY

SEPTEMBER 2017



Stay connected!



Send us and email: corridors@greatersudbury.ca



Check out our website: www.greatersudbury.ca/lasallecorridor



Follow us on twitter: @GreaterSudbury



Attend an event: Participate in the Design Charrettes on October 18-19 and November 22-23 (see project website for more details)

COMPLETE STREETS

Complete Streets refers to a **policy and design approach** that requires streets to be **planned, designed, operated, and maintained** for **all** users and uses.



PROJECT PRINCIPLES

1

Equitable sharing of the public right-of-way between users.

2

Proactive solutions that address the needs of persons with disabilities.

3

Creation of a modern image for the corridor that also reflects New Sudbury's history and diversity.

4

Environmentally-friendly measures to protect the City's natural resources to the impacts of climate change.

5

Facilitate development of neighbourhood-friendly spaces and places that are active and inviting to all.

6

Integrating "smart" streets concepts that use technology to benefit all modes.

7

Creation of a public realm that is context specific and supports an all-ages friendly environment.

8

Facilitate development opportunities and opportunities to enhance municipal ROI for adjacent lands.

9

Create long-term sustainable and cost effective solutions for maintenance, cleanliness, durability, and use of materials.

10

Facilitate the evolution of adjacent and near-by blocks to support designs that enhance the entire corridor/district.

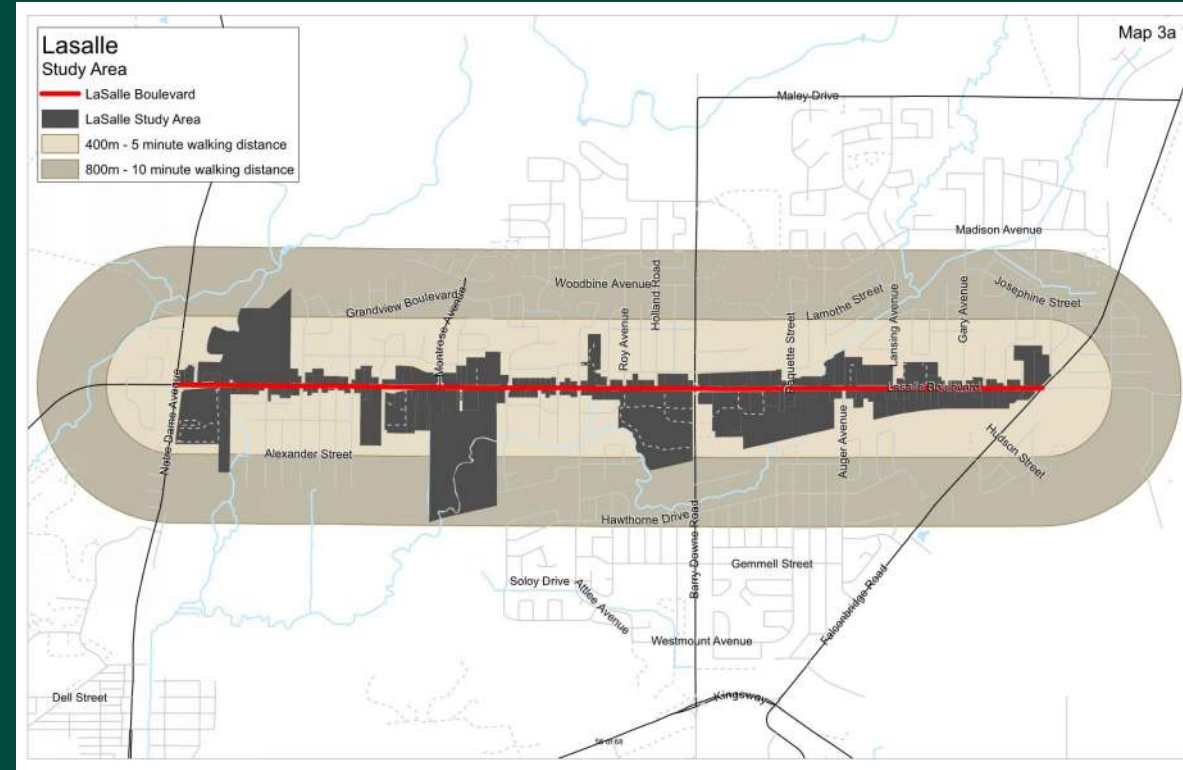
11

Chart modern designs and policies for the Lasalle Blvd. corridor, while respecting the character of adjacent neighbourhoods.

12

Integrate innovation and contextual land use planning and placemaking with long-range planning for transportation.

Study Area



The study area extends along Lasalle Boulevard from Notre Dame Avenue to Hudson Street in the City of Greater Sudbury.

The study area extends to a walking radius of 800 metres from Lasalle Boulevard and includes portions of adjacent neighbourhoods.

Population

