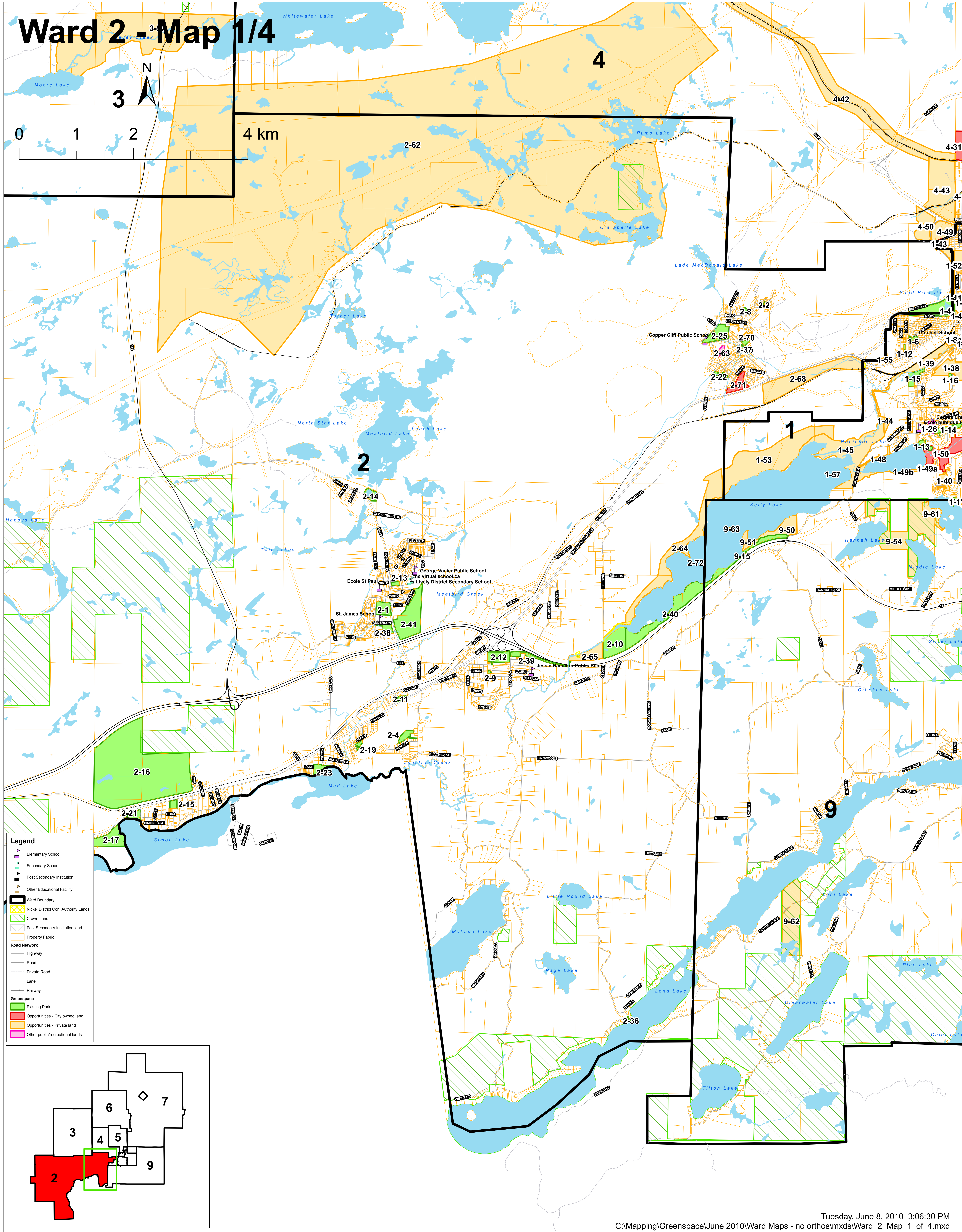
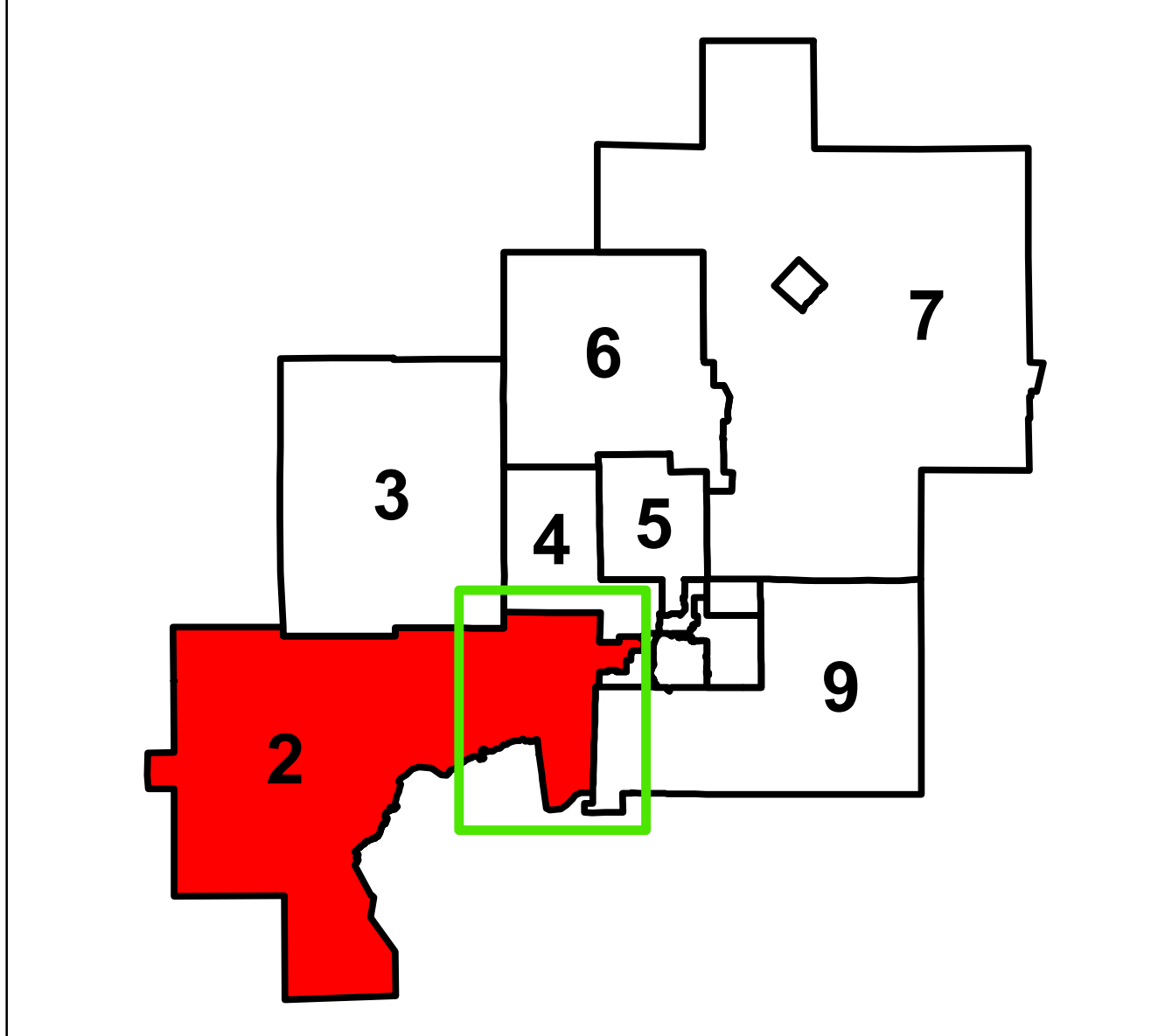


Ward 2 - Map 1/4



Legend

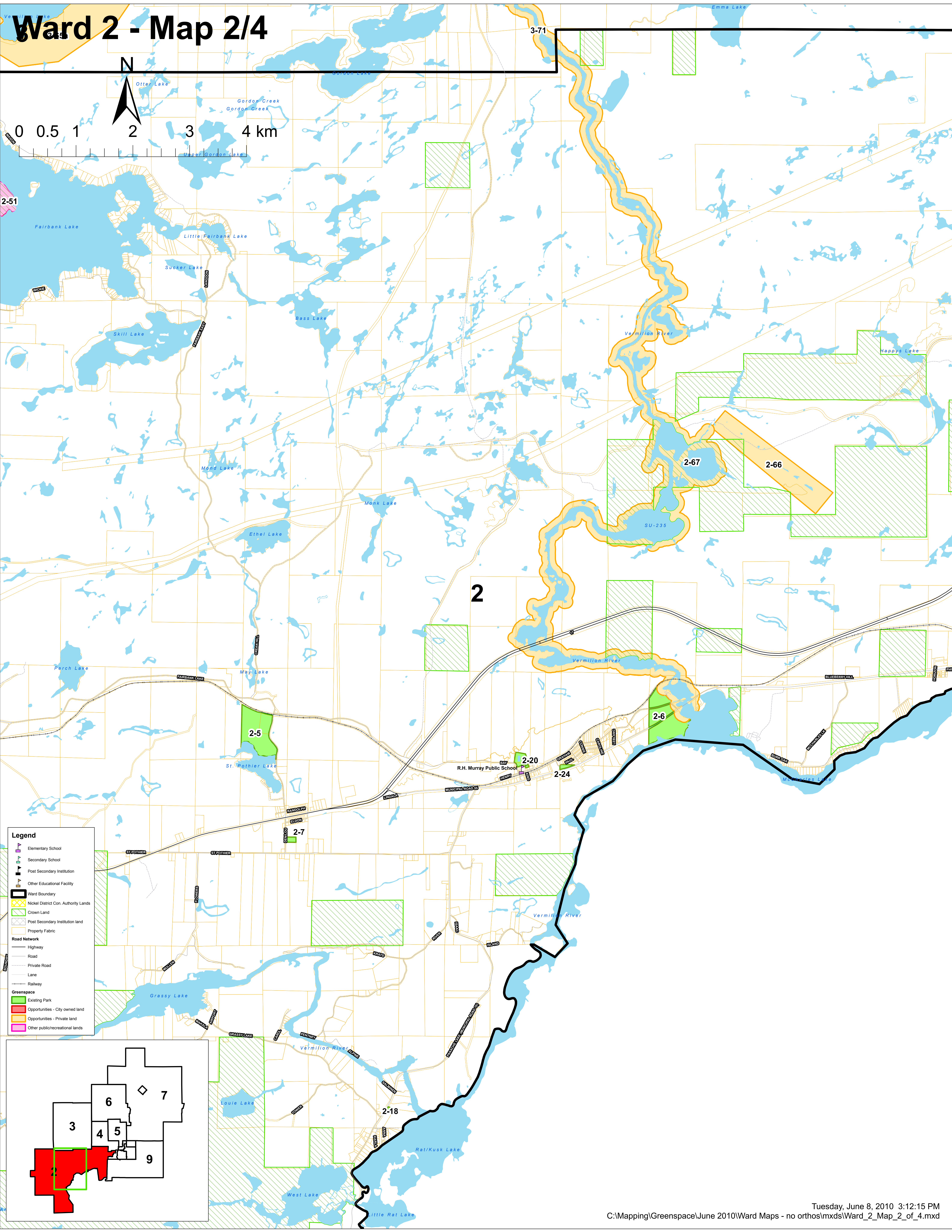
- Elementary School
- Secondary School
- Post Secondary Institution
- Other Educational Facility
- Ward Boundary
- Nickel District Con. Authority Lands
- Crown Land
- Post Secondary Institution land
- Property Fabric
- Road Network
 - Highway
 - Road
 - Private Road
 - Lane
 - Railway
- Greenspace
 - Existing Park
 - Opportunities - City owned land
 - Opportunities - Private land
 - Other public/recreational lands



Ward 2 - Map 2/4

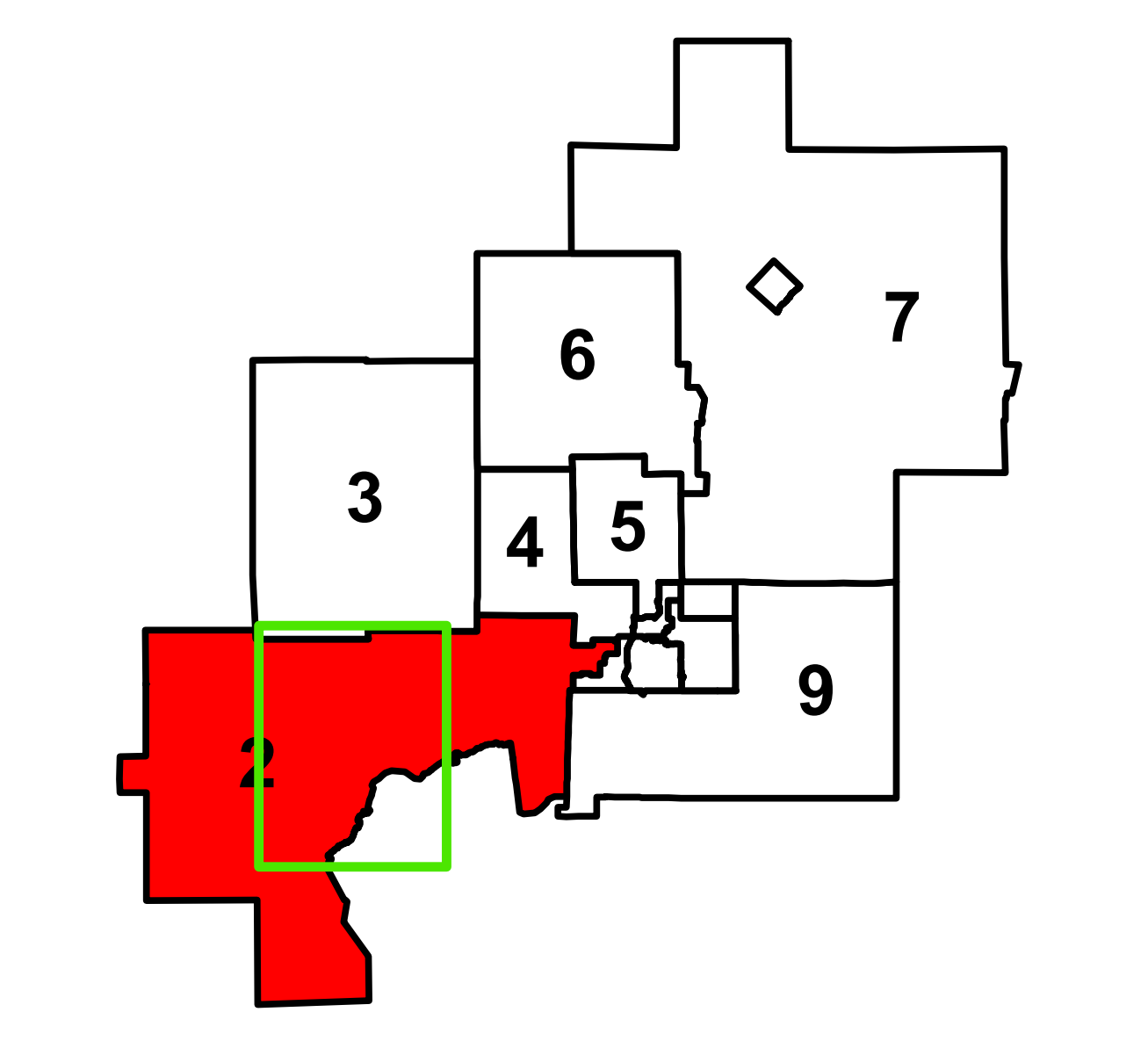


0 0.5 1 2 3 4 km

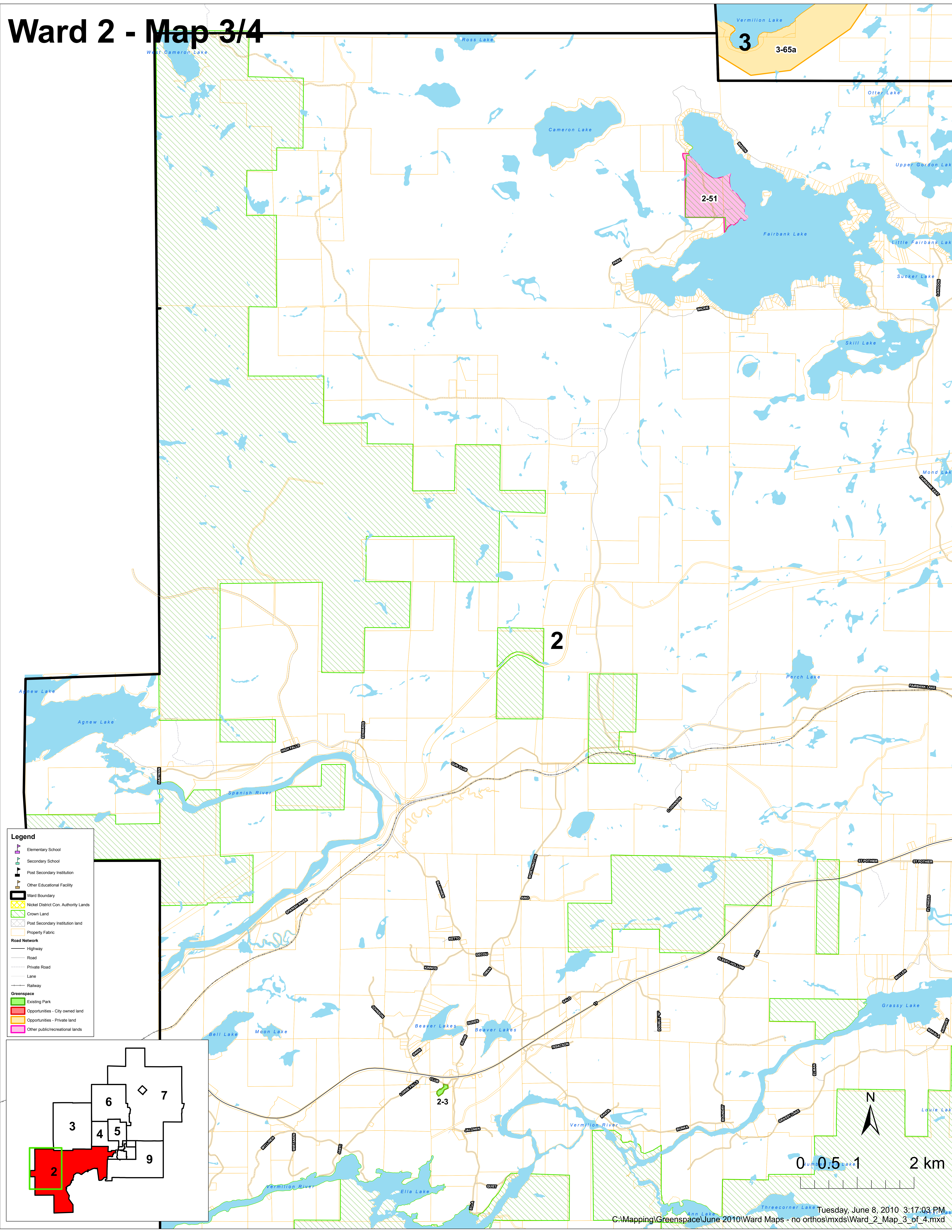
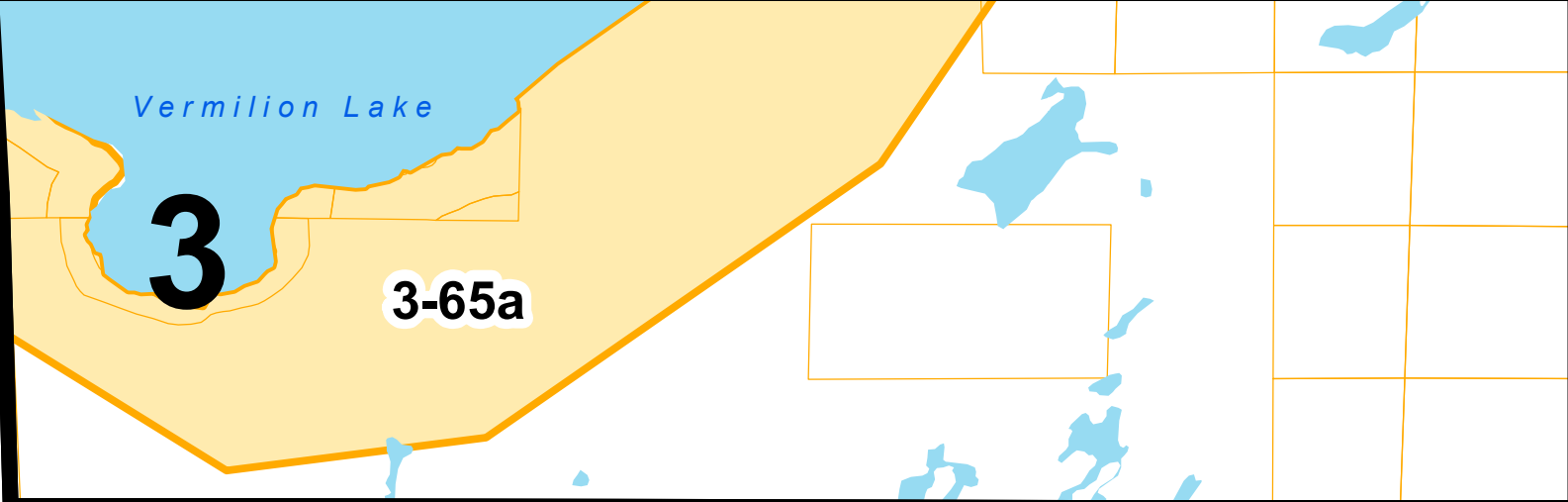


Legend

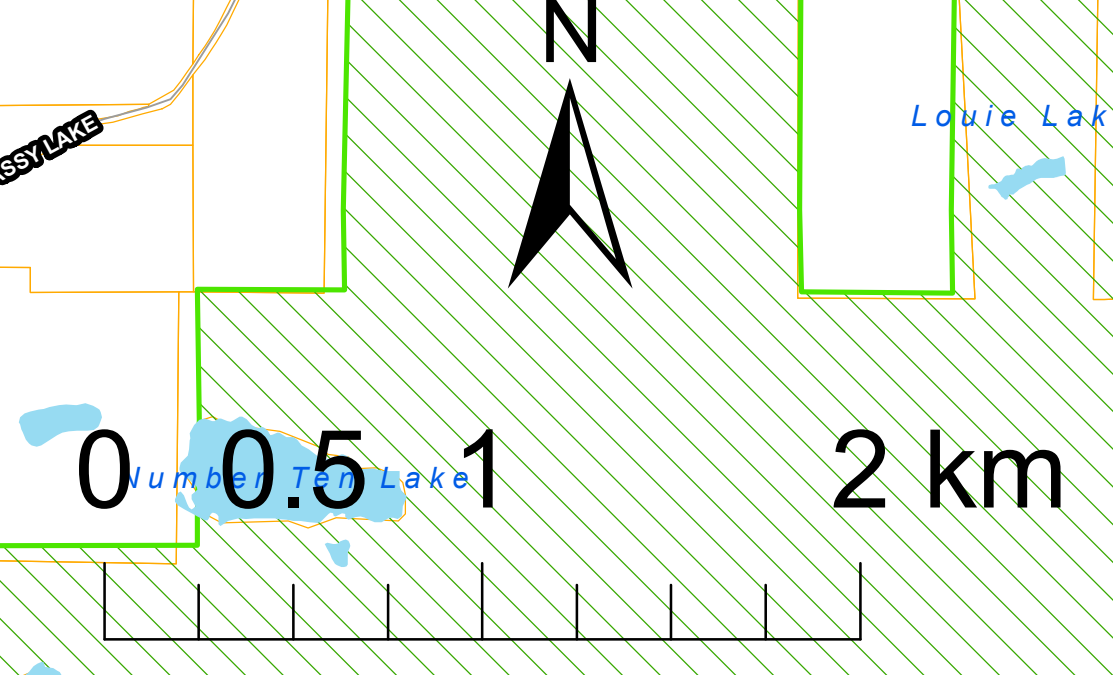
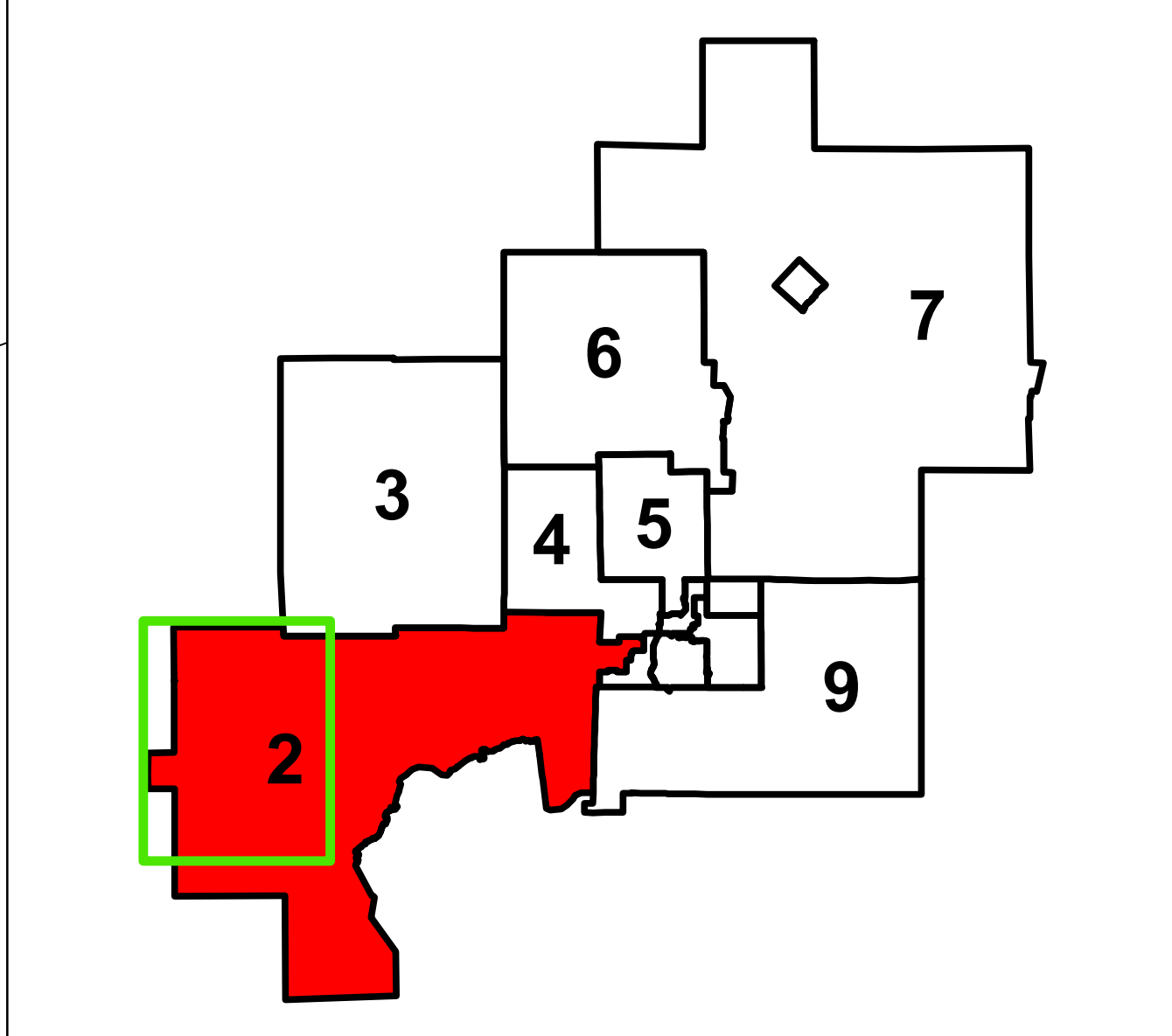
- Elementary School
- Secondary School
- Post Secondary Institution
- Other Educational Facility
- Ward Boundary
- Nickel District Con. Authority Lands
- Crown Land
- Post Secondary Institution land
- Property Fabric
- Road Network
 - Highway
 - Road
 - Private Road
 - Lane
 - Railway
- Greenspace
 - Existing Park
 - Opportunities - City owned land
 - Opportunities - Private land
 - Other public/recreational lands



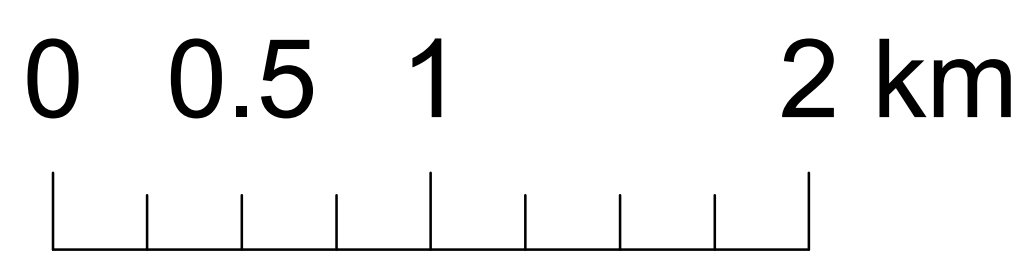
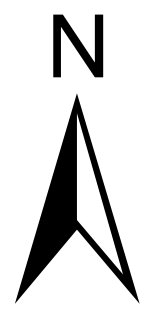
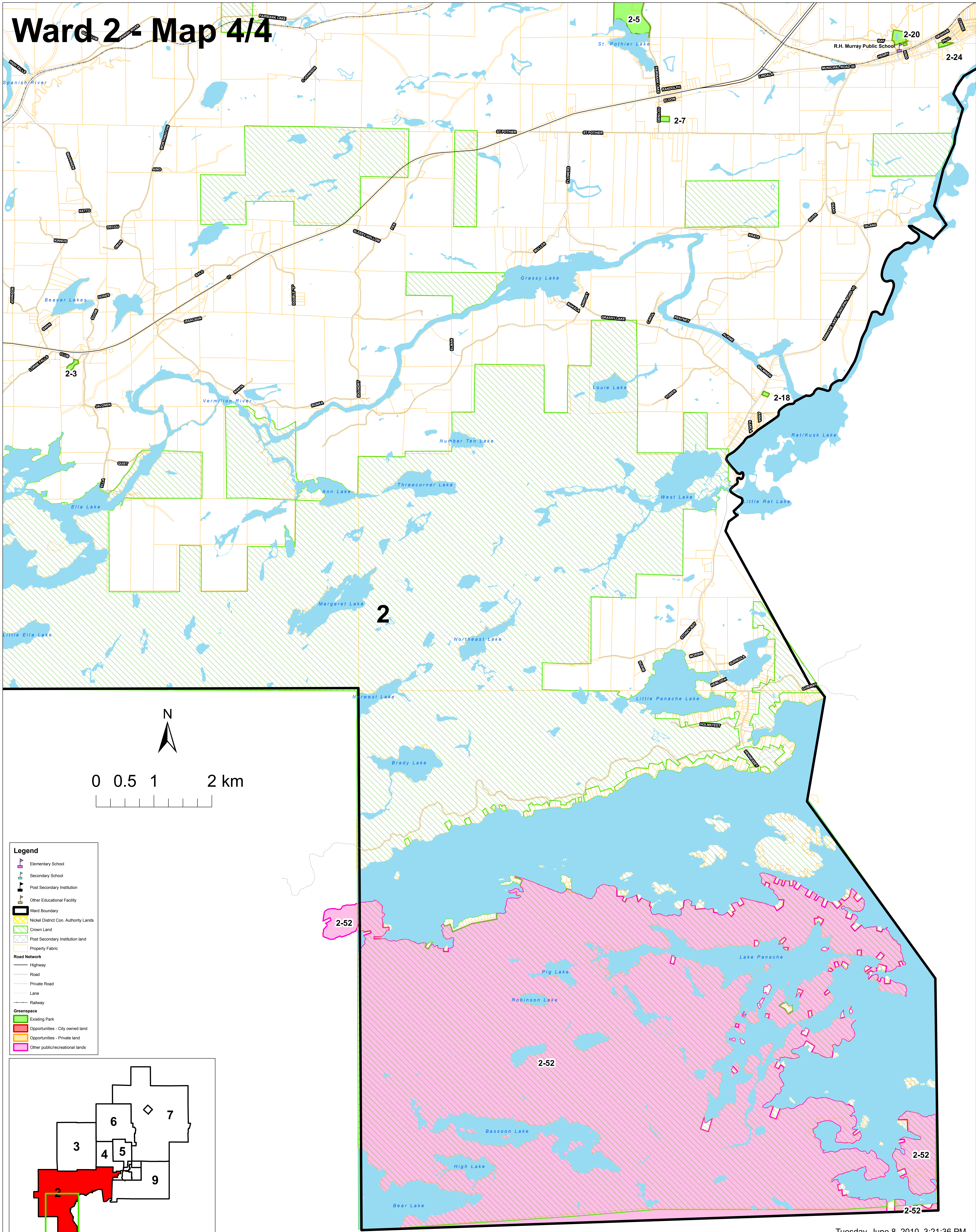
Ward 2 - Map 3/4



- Legend**
- Elementary School
 - Secondary School
 - Post Secondary Institution
 - Other Educational Facility
 - Ward Boundary
 - Nickel District Con. Authority Lands
 - Crown Land
 - Post Secondary Institution land
 - Property Fabric
 - Road Network
 - Highway
 - Road
 - Private Road
 - Lane
 - Railway
 - Greenspace
 - Existing Park
 - Opportunities - City owned land
 - Opportunities - Private land
 - Other public/recreational lands



Ward 2 - Map 4/4



- Legend**
- Elementary School
 - Secondary School
 - Post Secondary Institution
 - Other Educational Facility
 - Ward Boundary
 - Nickel District Con. Authority Lands
 - Crown Land
 - Post Secondary Institution land
 - Property Fabric
 - Road Network**
 - Highway
 - Road
 - Private Road
 - Lane
 - Railway
 - Greenspace**
 - Existing Park
 - Opportunities - City owned land
 - Opportunities - Private land
 - Other public/recreational lands

