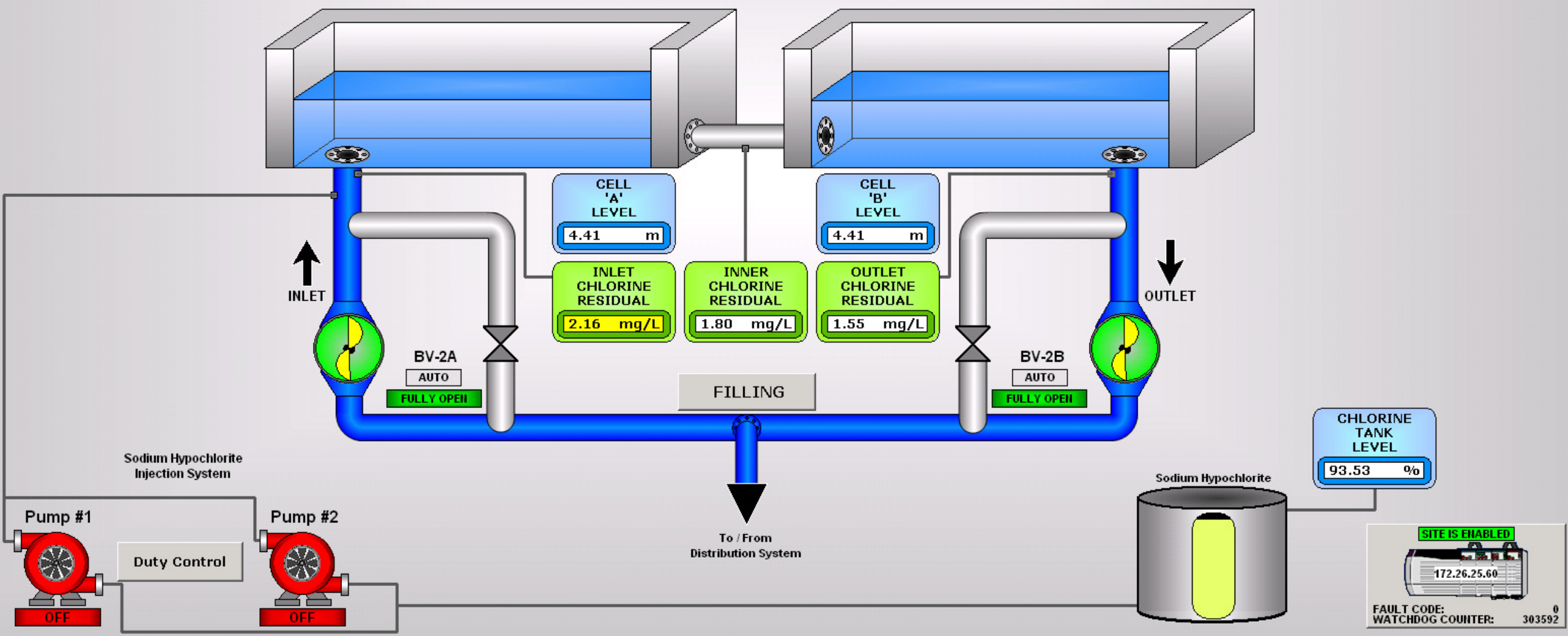


Ellis Reservoir

BUILDING INTRUSION	BUILDING LOW TEMPERATURE	AC POWER FAILURE	SMOKE DETECTION	CELL 'A' ACCESS HATCH	CELL 'A' EQUIPMENT HATCH	CELL 'B' ACCESS HATCH	CELL 'B' EQUIPMENT HATCH	CHLORINE PUMP #1 FAULT	CHLORINE PUMP #2 FAULT	HYPO CONTAIN. FLOOD	CELL 'A' TX FAILURE	
CELL 'B' TX FAILURE	CHLORINE TANK TX FAILURE	INLET CHLORINE RESIDUAL TX FAILURE	INNER CHLORINE RESIDUAL TX FAILURE	OUTLET CHLORINE RESIDUAL TX FAILURE							PLC FAULT	PLC/COMM. FAILURE



Wanapitei WTP - High Lift Pumps

Trends

Site Notes

TP2 EMERGENCY STOP	TP3 EMERGENCY STOP	TP4 EMERGENCY STOP	TP5 EMERGENCY STOP	TP6 EMERGENCY STOP	TP2 FAIL TO START	TP3 FAIL TO START	TP4 FAIL TO START	TP5 FAIL TO START	TP6 FAIL TO START	TP2 FAIL TO STOP	TP3 FAIL TO STOP
--------------------------	--------------------------	--------------------------	--------------------------	--------------------------	-------------------------	-------------------------	-------------------------	-------------------------	-------------------------	------------------------	------------------------

TP4 FAIL TO STOP	TP5 FAIL TO STOP	TP6 FAIL TO STOP
---------------------	---------------------	---------------------

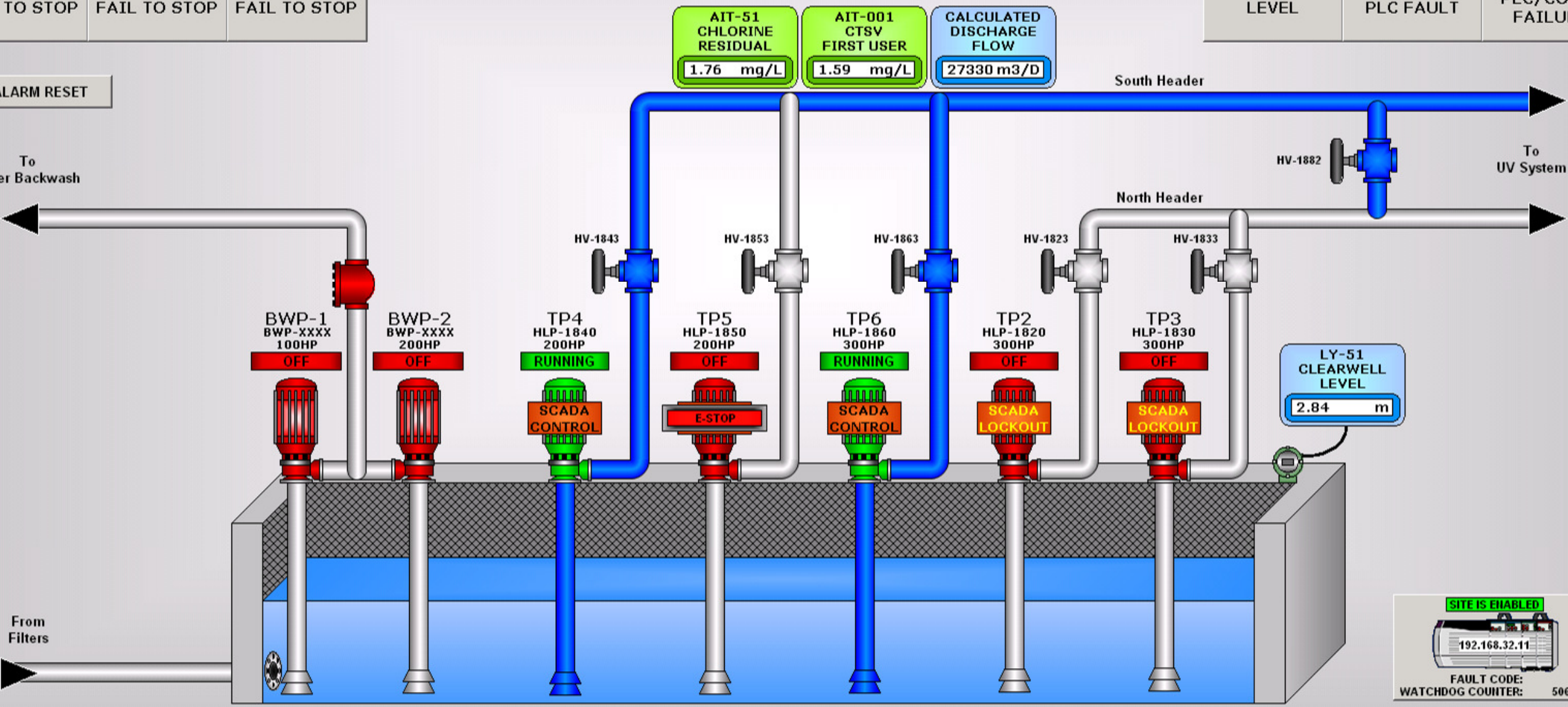
SUMP HIGH LEVEL	ICP-1800 PLC FAULT	ICP-1800 PLC/COMM. FAILURE
--------------------	-----------------------	----------------------------------

TP ALARM RESET

AIT-51
CHLORINE
RESIDUAL
1.76 mg/L

AIT-001
CTSV
FIRST USER
1.59 mg/L

CALCULATED
DISCHARGE
FLOW
27330 m3/D

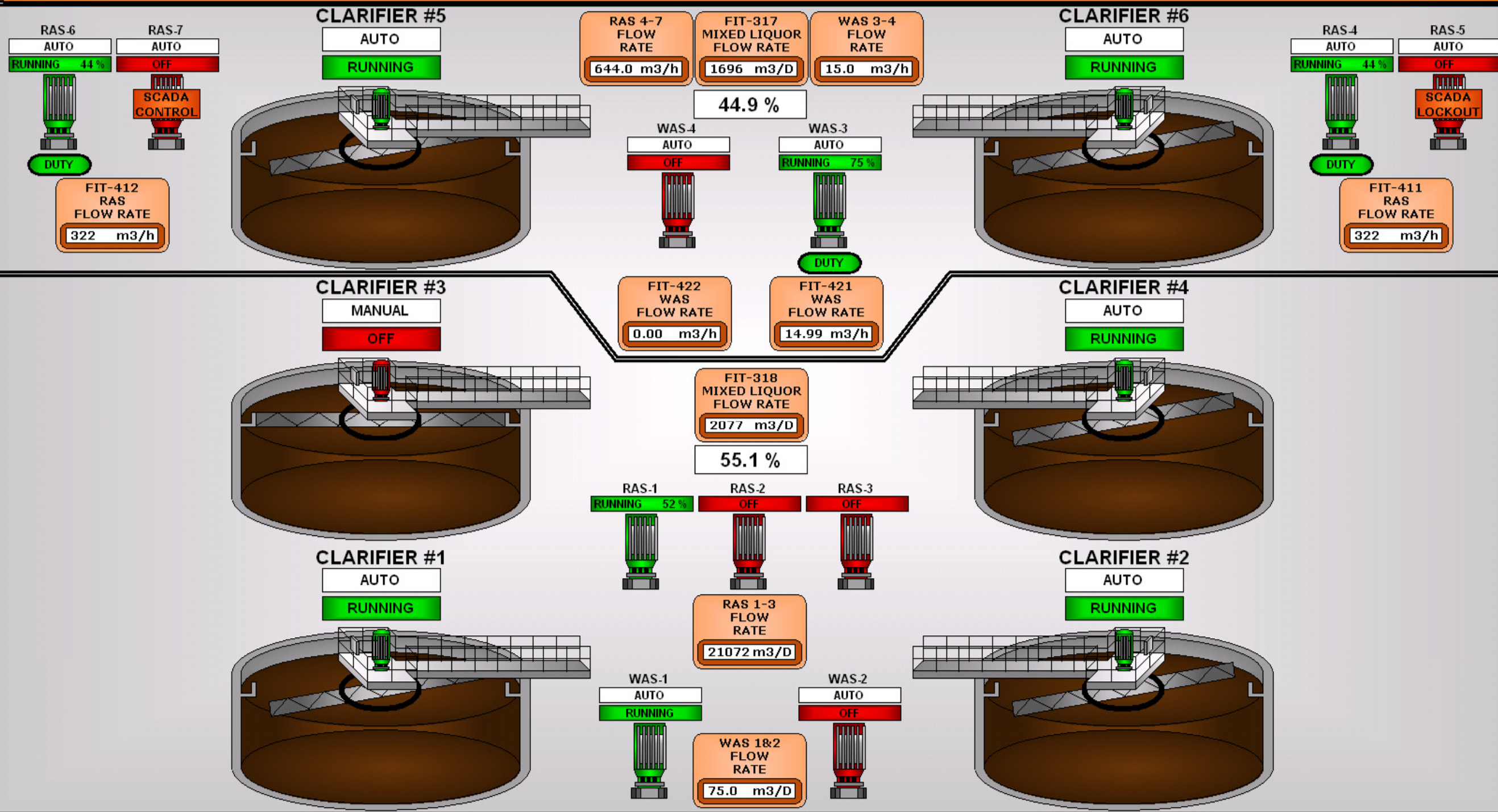


SITE IS ENABLED

192.168.32.11

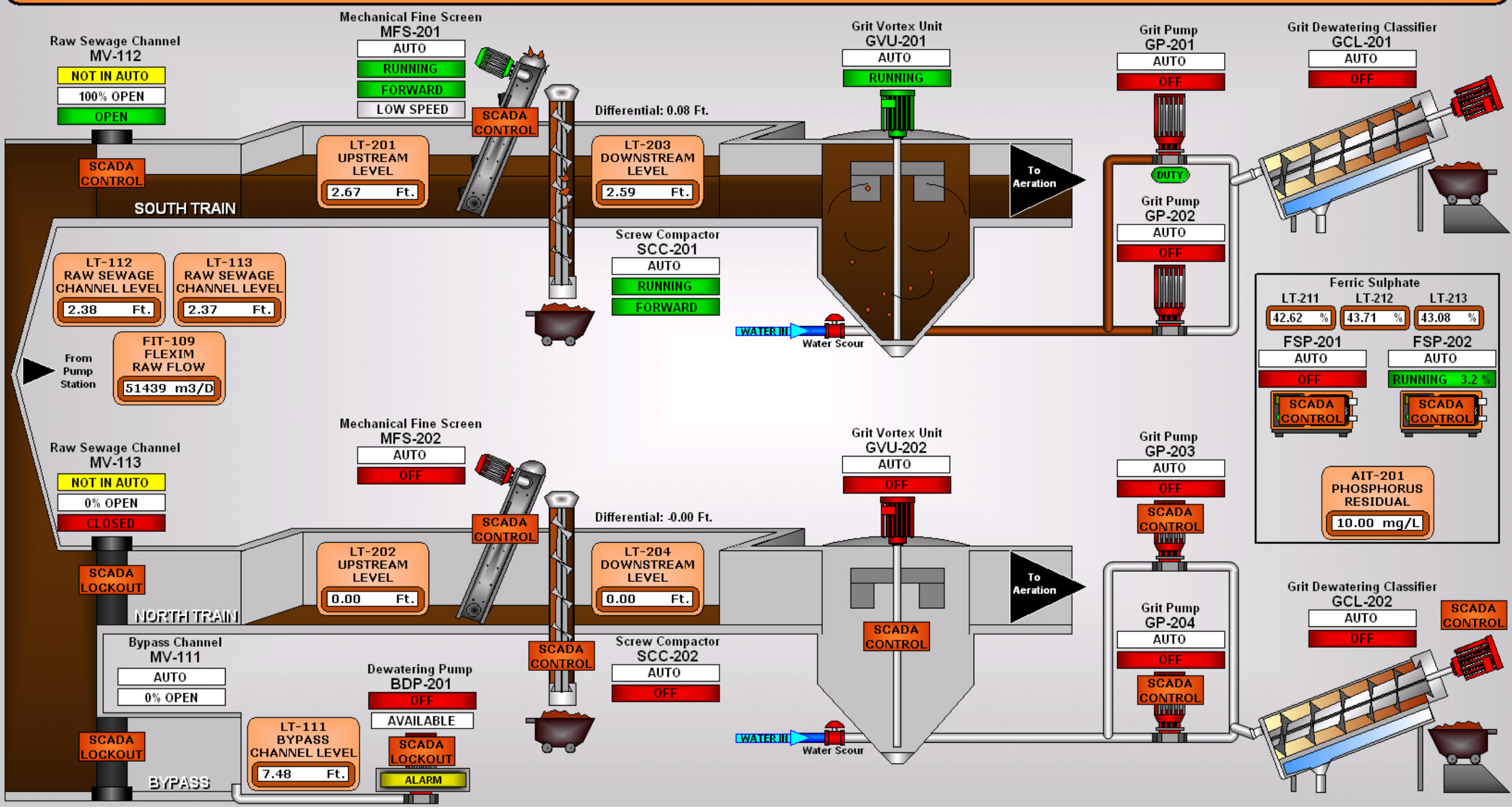
FAULT CODE: 0

WATCHDOG COUNTER: 506510



Sudbury WWTP - Headhouse Overview

Site Notes

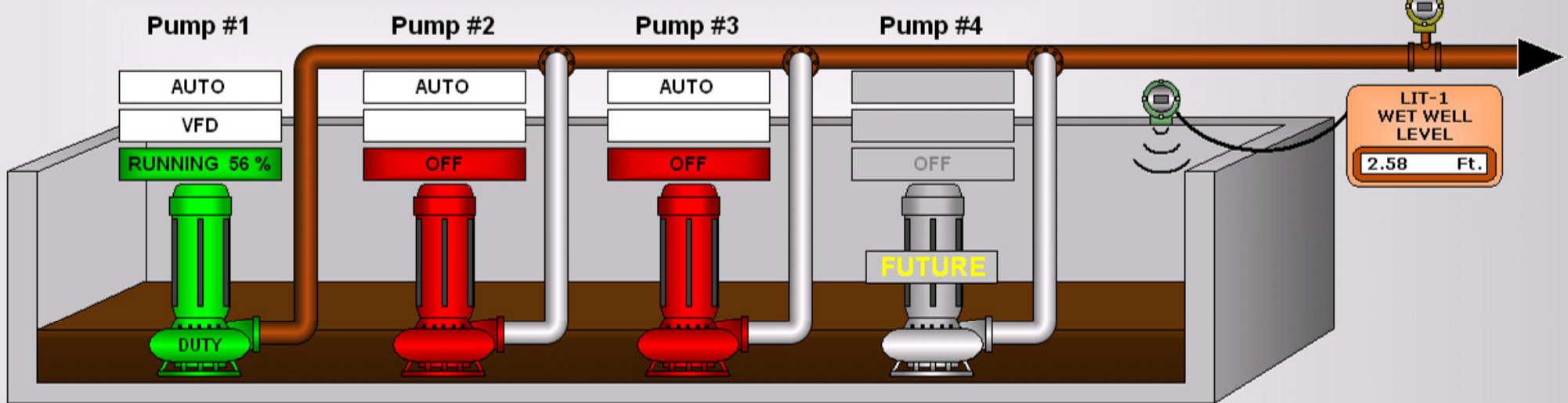


Jacob Lift Station

Pump Control Mode
LEVEL TRANSMITTER

TIT-1
BUILDING
TEMPERATURE
21.18 °C

PIT-1
DISCHARGE
PRESSURE
5.69 PSI



LIT-1
WET WELL
LEVEL
2.58 Ft.

Runtime:
3.547 Hrs.
Average Current:
17.2 A

Runtime:
0.000 Hrs.
Average Current:
0.0 A

Runtime:
0.000 Hrs.
Average Current:
0.0 A

Runtime:
0.000 Hrs.
Average Current:
0.0 A

P1 Trend

P2 Trend

P3 Trend

P4 Trend

Pump #1 Runtime

Current:	3.547 Hrs.
Daily:	3.547 Hrs.
Total:	2727.5 Hrs.
# Starts:	4815

RESET

Pump #2 Runtime

Current:	0.000 Hrs.
Daily:	3.933 Hrs.
Total:	2637.8 Hrs.
# Starts:	4457

RESET

Pump #3 Runtime

Current:	0.000 Hrs.
Daily:	4.000 Hrs.
Total:	2712.1 Hrs.
# Starts:	4072

RESET

Pump #4 Runtime

Current:	0.000 Hrs.
Daily:	0.000 Hrs.
Total:	0.0 Hrs.
# Starts:	0

RESET