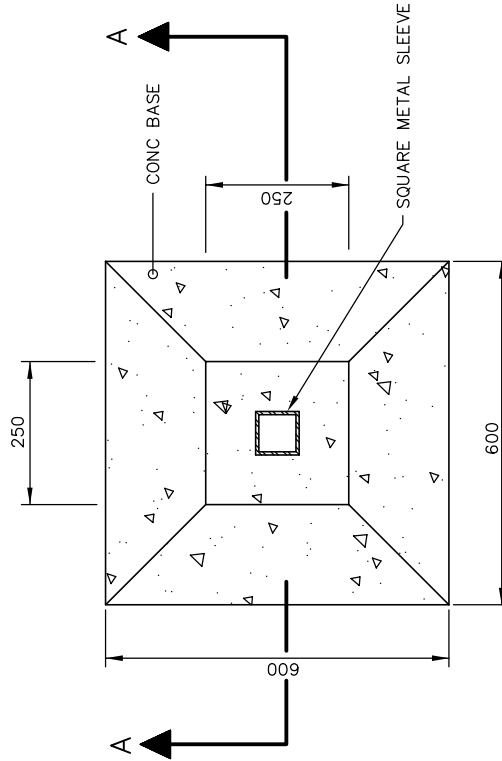
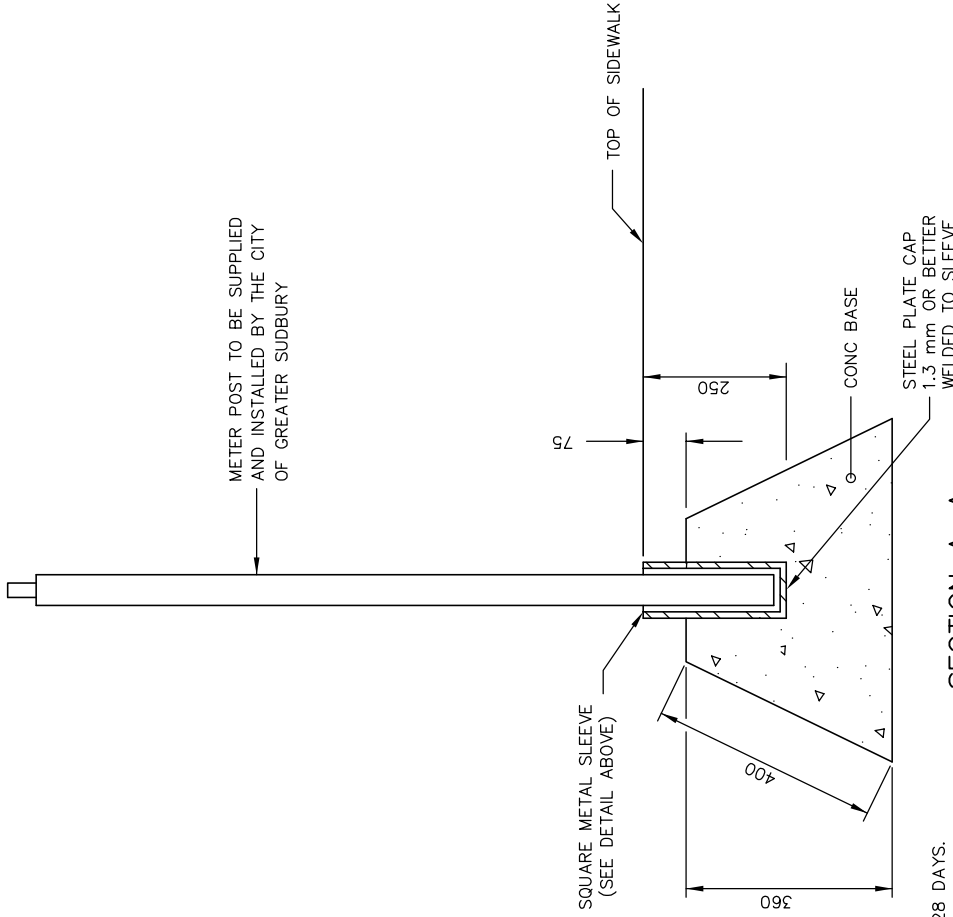


SQUARE METAL SLEEVE DETAIL



PLAN



SECTION A-A

**NOTES:**

1. CLASS OF CONCRETE: 32 MPa AT 28 DAYS.
2. 5.5 mm THICK SQUARE METAL SLEEVE TO BE HOT DIP-GALVANIZED ACCORDING TO CSA G-164.
3. WELDING ACCORDING TO CSA W59.
4. ALL DIMENSIONS ARE IN MILLIMETRES.

**DISCLAIMER OF WARRANTY**  
 The data is provided "as-is", without warranty of any kind either expressed or implied. Any and all liabilities for damage, direct or indirect, however caused, and resulting in any way by use of the supplied data is the full and final responsibility of the user.

**COPYRIGHT**  
 All rights are reserved. No part of the supplied data may be reproduced, or transmitted to others, in any form or by any means, without the written permission of the CITY OF GREATER SUDBURY.



**CONCRETE PARKING  
 METER BASE**

DRAWN BY: STS/RF/FRANK	REV No: 1
DATE: 2003-03-03	REV DATE: JAN/2013
SCALE: NTS	CAD/FILE No.: A1948-1 (1 OF 1)
APP'D:	<b>GSSD-580.010</b>