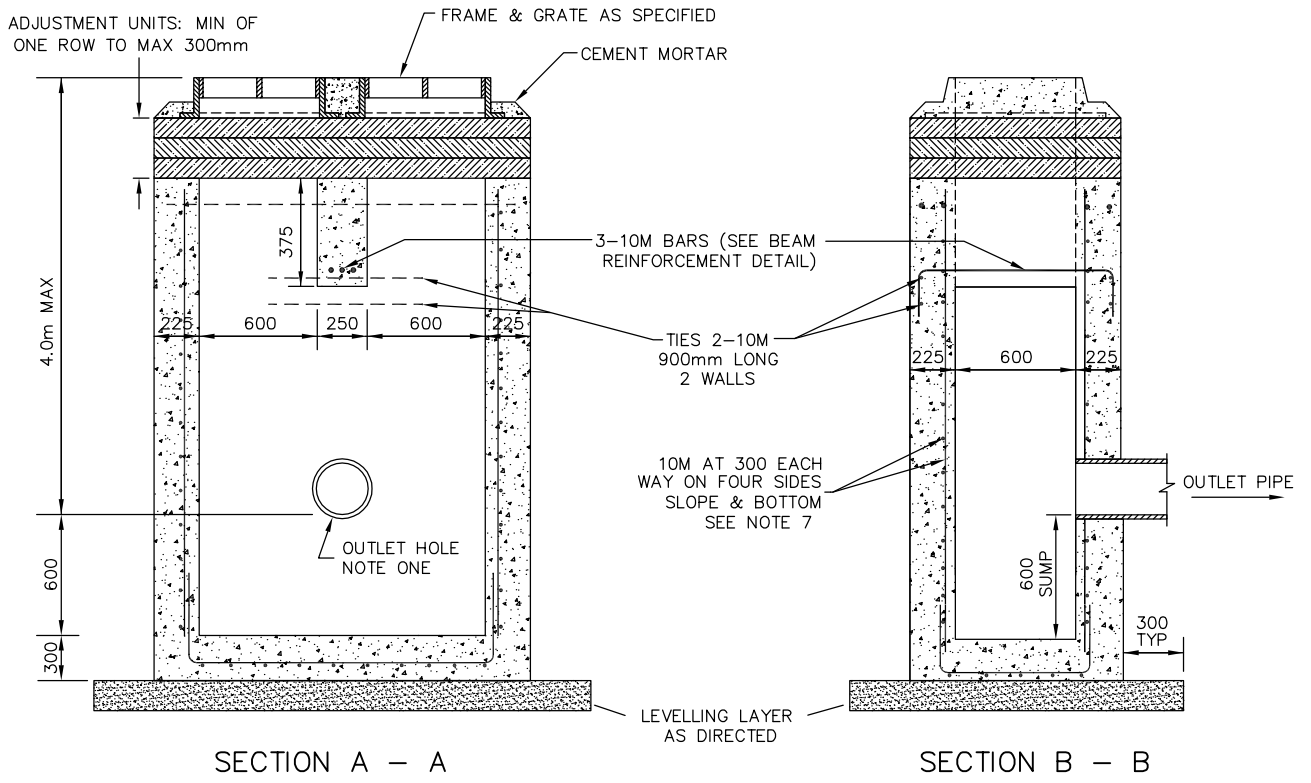


BEAM REINFORCEMENT DETAIL



NOTES:

1. OUTLET HOLE LOCATIONS AS REQUIRED.
2. CLASS OF CONCRETE: 32 MPa AT 28 DAYS.
3. CONCRETE GUTTER SHALL END 900 mm ON EITHER SIDE OF CATCH BASIN WITH AN ASPHALT GUTTER BEING CONSTRUCTED FROM END OF CONCRETE GUTTER TO CATCHBASIN FRAME, SEE GSSD-610.010.
4. WHEN CURB INLET CATCHBASIN FRAME AND GRATE IS SPECIFIED, THE INSIDE BACK WALL OF THE CATCHBASIN SHALL BE LOCATED DIRECTLY BELOW THE BACK OF CURB.
5. ADJUSTMENT UNITS TO BE PARGED ON THE OUTSIDE WITH 1:3 NON-SHRINK MORTAR MIX, APPLIED 15 mm THICK.
6. ADJUSTMENT UNITS TO BE SET IN 12 mm MORTAR MIX.
7. TWO SEPARATE VERTICAL BARS HAVING A MINIMUM 600 mm OVERLAP MAY BE USED IN LIEU OF THE ONE CONTINUOUS BENT VERTICAL BAR WHEN DIRECTED.
8. ALL DIMENSIONS ARE IN MILLIMETRES UNLESS OTHERWISE SHOWN.



**CAST-IN-PLACE
TWIN INLET CATCHBASIN**
600 mm x 1450 mm
DEPTH 4.0 m MAX

DRAWN BY: RF/STS	REV No: 2
DATE: 2003-03-03	REV DATE: JAN/2013
SCALE: NTS	CAD/FILE No.: A1936-1 (1 OF 1)
APP'D:	GSSD-705.021

DISCLAIMER OF WARRANTY : The data is provided "as-is", without warranty of any kind either expressed or implied. Any and all liabilities for damage, direct or indirect, however caused, and resulting in any way by use of the supplied data is the full and final responsibility of the user.

COPYRIGHT : All rights are reserved. No part of the supplied data may be reproduced, or transmitted to others, in any form or by any means, without the prior written permission of the CITY OF GREATER SUDBURY.