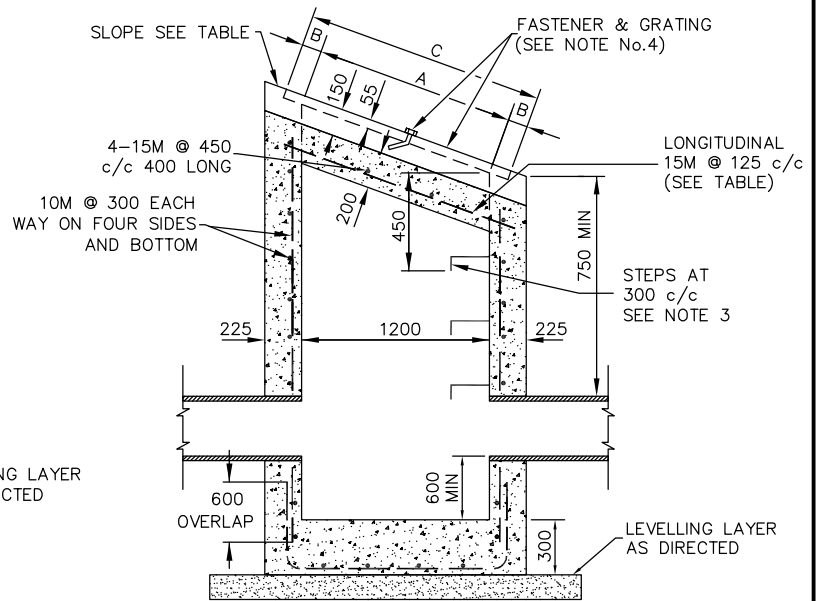
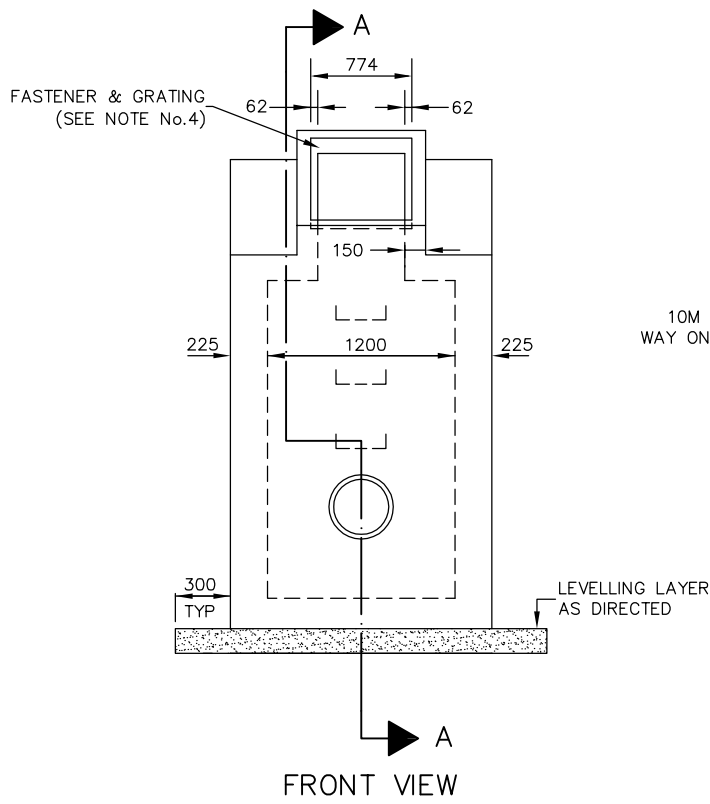


| SLOPE | A | B | C | LONGITUDINAL BAR LENGTHS |
|-------|------|-----|------|-----------------------------|
| 2:1 | 1341 | 66 | 1473 | 1732 |
| 3:1 | 1265 | 104 | 1473 | 1633 |
| 4:1 | 1237 | 118 | 1473 | 1597 |



NOTES:

1. CLASS OF CONCRETE: 32 MPa at 28 DAYS.
2. MINIMUM COVER TO REINFORCEMENT TO BE 50 mm.
3. MAINTENANCE HOLE STEPS CIRCULAR HOLLOW ALUMINUM AS PER OPSD-405.010.
4. GRATING AND FASTENER DETAILS AS PER OPSD-403.010.
5. ALL DIMENSIONS ARE IN MILLIMETRES UNLESS OTHERWISE SHOWN.



CAST-IN-PLACE
DITCH INLET MAINTENANCE
HOLE CATCHBASIN
MAX PIPE SIZE 825 mm
1200 mm x 1200 mm
DEPTH 4.0 m MAX

| | |
|------------------|-----------------------------------|
| DRAWN BY: RF/STS | REV No: 2 |
| DATE: 2003-03-03 | REV DATE: JAN/2013 |
| SCALE: NTS | CAD/FILE No.: A1939-1 (1 OF 1) |
| APP'D: | GSSD-702.040 |

DISCLAIMER OF WARRANTY : The data is provided "as-is", without warranty of any kind either expressed or implied. Any and all liabilities for damage, direct or indirect, however caused, and resulting in any way by use of the supplied data is the full and final responsibility of the user.

COPYRIGHT : All rights are reserved. No part of the supplied data may be reproduced, or transmitted to others, in any form or by any means, without the prior written permission of the CITY OF GREATER SUDBURY.