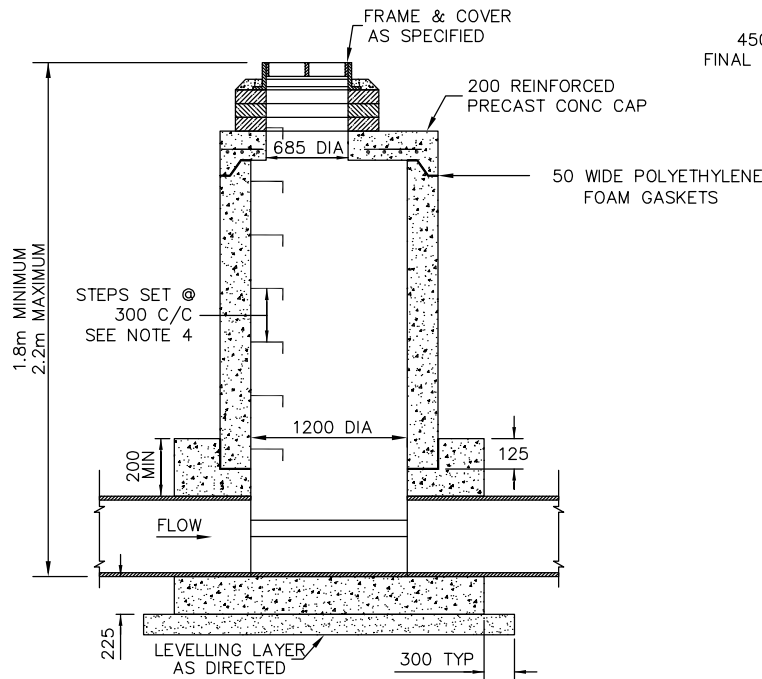
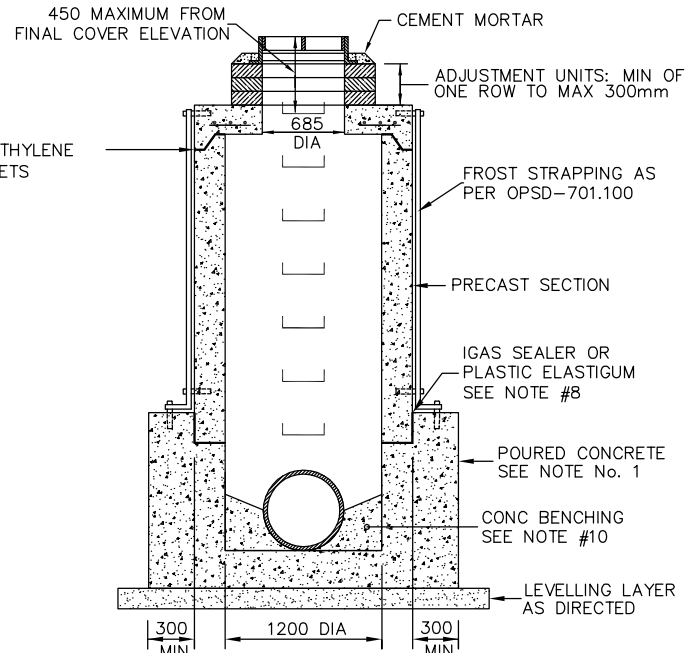


PLAN—COVER REMOVED



SECTION A — A



SECTION B — B

NOTES:

1. POURED CONCRETE BASE CLASS OF CONCRETE: 32 MP_a AT 28 DAYS.
2. MINIMUM COVER TO REINFORCEMENT TO BE 50 mm.
3. ADJUSTMENT UNITS TO BE PARGED ON THE OUTSIDE WITH 1:3 NON-SHRINK MORTAR MIX, APPLIED 15 mm THICK.
4. MAINTENANCE HOLE STEPS CIRCULAR HOLLOW ALUMINUM AS PER OPSD-405.010
5. 600 mm DEEP SUMP TO BE CONSTRUCTED WHEN USED AS AN MHCB.
6. WHEN STRUCTURE IS TO ACT AS A MAINTENANCE HOLE CATCHBASIN, THE CONC GUTTER SHALL END 900 mm ON EITHER SIDE OF THE MHCB WITH AN ASPHALT GUTTER BEING CONSTRUCTED FROM END OF CONC GUTTER TO MHCB FRAME, AS PER GSSD-610.010.
7. WHEN CURB INLET CB FRAME & GRATE IS SPECIFIED, THE INSIDE BACK WALL OF THE CB SHALL BE LOCATED DIRECTLY BELOW THE BACK OF CURB.
8. MIN 7 mm x 125 mm IGAS SEALER OR PLASTIC ELASTIGUM TO BE APPLIED TO FIRST SECTION OF MH BARREL BEFORE POURING CONCRETE BASE.
9. FROST STRAP INSTALLATION, AS PER OPSD-701.100
10. CONCRETE BENCHING:
 - SLOPE 1:12
 - CLASS OF CONCRETE: 20 MP_a AT 28 DAYS
11. ADJUSTMENT UNITS TO BE SET IN 12 mm MORTAR MIX.
12. ALL DIMENSIONS ARE IN MILLIMETRES UNLESS OTHERWISE SHOWN.



**STORM SEWER PRECAST
SHALLOW MAINTENANCE HOLE OR
MAINTENANCE HOLE CATCHBASIN**
MAX PIPE SIZE 825 mm
1200 mm x 1200 mm
DEPTH 2.2 m MAX

DRAWN BY: RF/STS	REV No: 2
DATE: 2003-03-03	REV DATE: JAN/2013
SCALE: NTS	CAD/FILE No.: A1938-1 (1 OF 1)
APP'D:	GSSD-701.017

DISCLAIMER OF WARRANTY : The data is provided "as-is", without warranty of any kind either expressed or implied. Any and all liabilities for damage, direct or indirect, however caused, and resulting in any way by use of the supplied data is the full and final responsibility of the user.

COPYRIGHT : All rights are reserved. No part of the supplied data may be reproduced, or transmitted to others, in any form or by any means, without the prior written permission of the CITY OF GREATER SUDBURY.