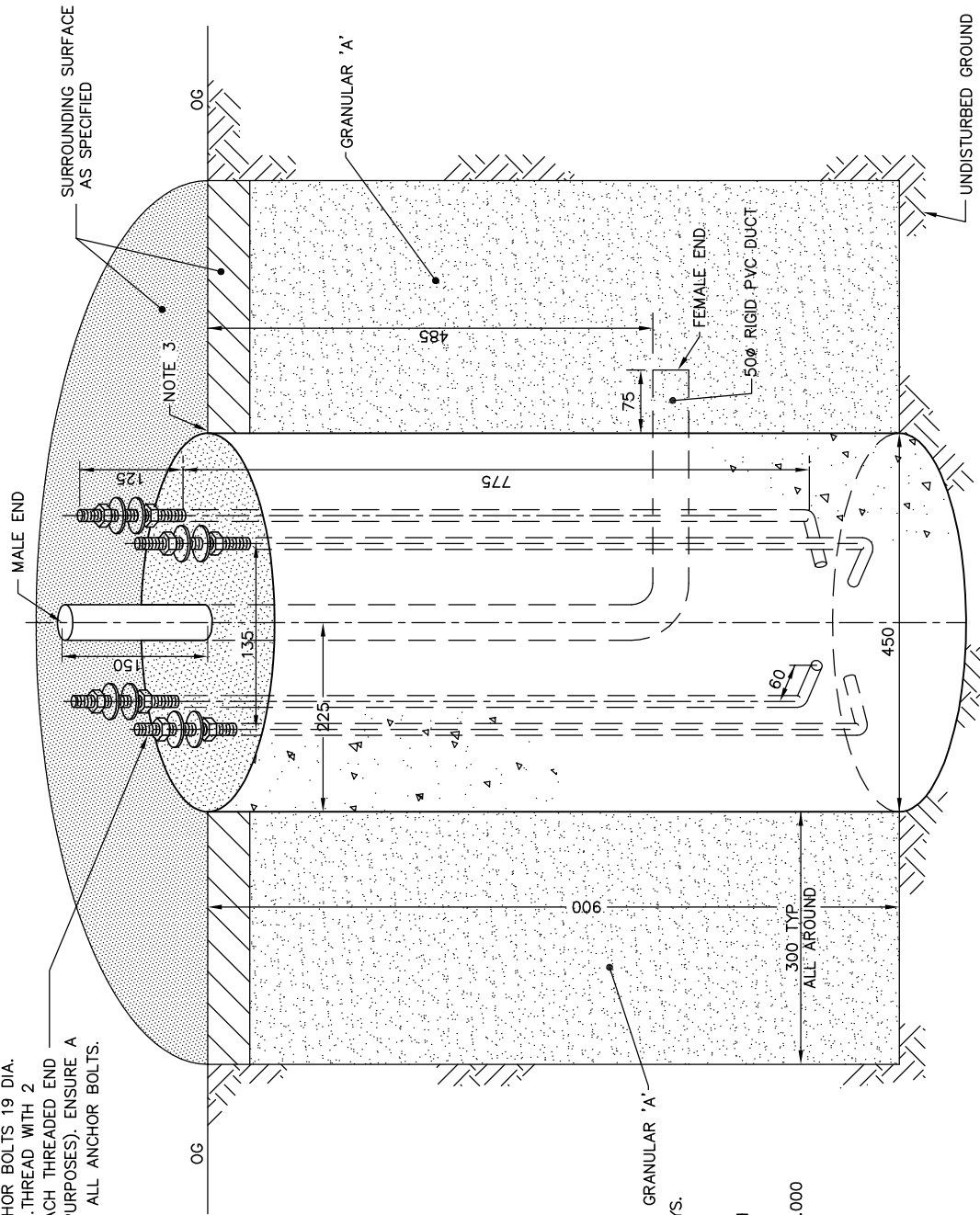


FOUR (4) GALVANIZED ANCHOR BOLTS 19 DIA. x 610 WITH 130 OF 25 N.C. THREAD WITH 2 WASHERS & 2 NUTS ON EACH THREADED END (ONE SET FOR LEVELLING PURPOSES). ENSURE A DISTANCE OF 135 BETWEEN ALL ANCHOR BOLTS.



**NOTES:**

1. CLASS OF CONCRETE: 30 MPa AT 28 DAYS.
2. ALL DIMENSIONS ARE IN MILLIMETRES.
3. TOP OF CONCRETE BASE SHALL BE FLUSH WITH SURROUNDING SURFACE.
4. FOR POLE DETAILS, REFER TO GSSD-1231.000
5. ALL EXPOSED ANCHORAGE ASSEMBLY TO BE GIVEN A LIBERAL COATING OF WHITE NON-STAINING GREASE.
6. THE COMPLETE ANCHORAGE ASSEMBLY INCLUDING BOLTS, NUTS AND WASHERS SHALL BE HOT DIPPED GALVANIZED ACCORDING TO CSA STD G164-M92.

**DISCLAIMER OF WARRANTY**

The data is provided "as-is", without warranty of any kind either expressed or implied. Any and all liabilities for damage, direct or indirect, however caused, and resulting in any way by use of the supplied data is the full and final responsibility of the user.

**COPYRIGHT**

All rights are reserved. No part of the supplied data may be reproduced, or transmitted to others, in any form or by any means, without the written permission of the CITY OF GREATER SUDBURY.



**UNREINFORCED  
CONCRETE BASE  
FOR 127 mm DIA TRAFFIC  
SIGNAL POLES**

DRAWN BY: MHD

DATE: 2013-01-01

SCALE: NTS

APP'D:

REV No: 1

REV DATE: 2014-03-13

CAD/FILE No.:

A2276-1 (1 OF 1)

GSSD-1230.021