

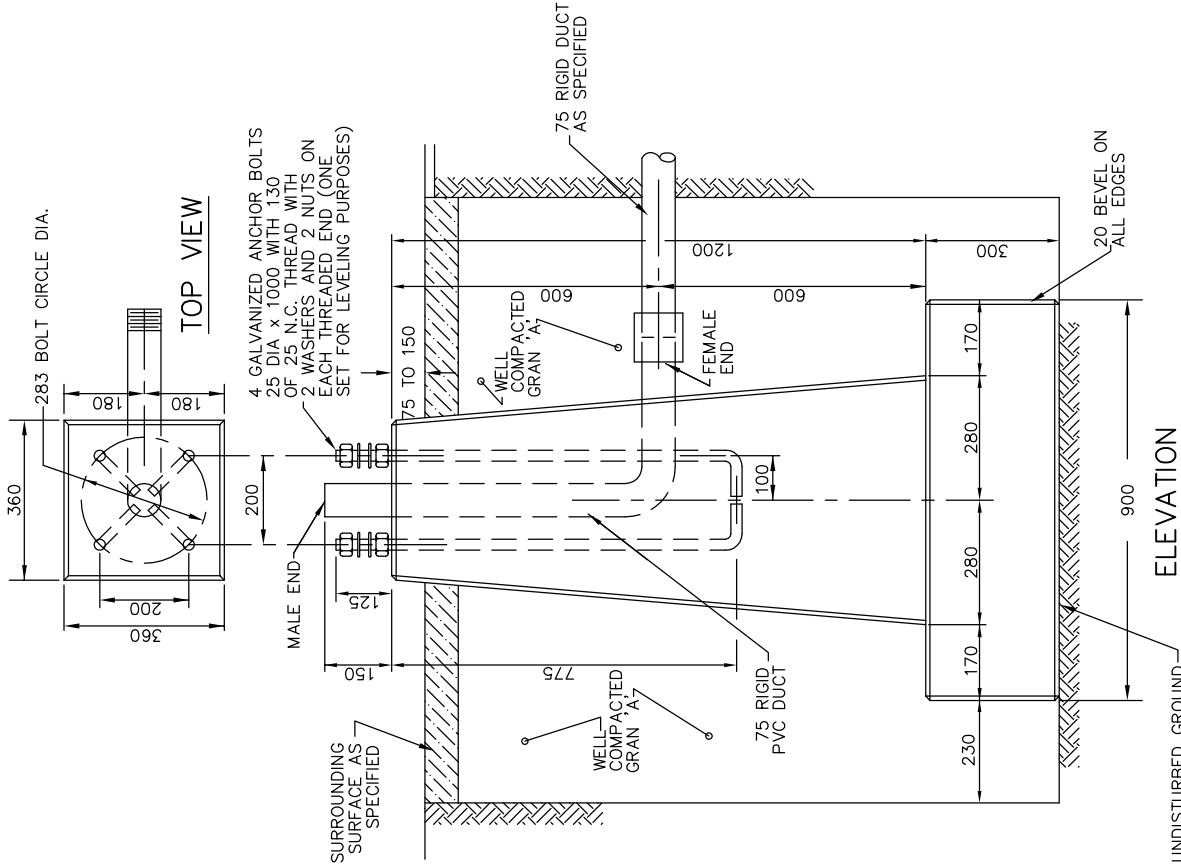
DETAILS OF REINFORCING BARS

BAR DIAGRAMS	CODE	DIA x LENGTH	DIM X	DIM Y	No. REQ'D
	A	10M x 1000	230	230	1
	B	10M x 1250	250	250	1
	C	10M x 1500	300	300	1
	D	10M x 1750	350	350	1
	E	10M x 2000	400	400	1
	F	10M x 1700	-	-	4

MATERIAL FOR BASE

NOTES:

1. CLASS OF CONCRETE: 30 MPa AT 28 DAYS.
2. ALL DIMENSIONS ARE IN MILLIMETRES.
3. THE COMPLETE ANCHORAGE ASSEMBLY INCLUDING BOLTS, NUTS AND WASHERS SHALL BE HOT DIPPED GALVANIZED ACCORDING TO CSA STD G164-M92.
4. ALL EXPOSED ANCHORAGE ASSEMBLY TO BE GIVEN A LIBERAL COATING OF WHITE NON-STAINING GREASE.
5. COVER TO REINFORCING STEEL 65 mm.



CROSS-SECTION REINFORCING BARS

REINFORCED CONCRETE BASE
 FOR 203mm DIA TRAFFIC SIGNAL POLES



DISCLAIMER OF WARRANTY
 The data is provided "as-is", without warranty of any kind either expressed or implied. Any and all liabilities for damage, direct or indirect, however caused, and resulting in any way by use of the supplied data is the full and final responsibility of the user.

COPYRIGHT
 All rights are reserved. No part of the supplied data may be reproduced, or transmitted to others, in any form or by any means, without the written permission of the CITY OF GREATER SUDBURY.

DRAWN BY: STS/RFRANK	REV No: 1
DATE: 2003-03-03	REV DATE: 2014-03-06
SCALE: NTS	CAD/FILE No.: A1980-1 (1 OF 1)
APP'D:	GSSD-1230.010