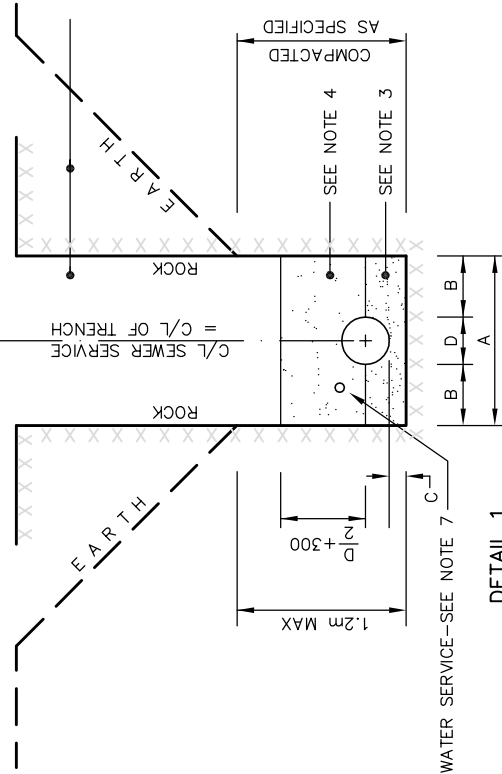


BACK FILL NOTES

- EARTH TRENCH**
1. UNDER ROAD ALLOWANCE—SUITABLE NATIVE MATERIAL TO BE USED TO SUB-GRADE LEVEL.
 2. OFF ROAD ALLOWANCE—SUITABLE NATIVE MATERIAL TO BE USED TO GRADE LEVEL.
- ROCK TRENCH**
1. UNDER ROAD ALLOWANCE
a) USE SELECT SUBGRADE MATERIAL OR 150 mm MINUS CRUSHED ROCK TO TOP OF ROCK.
 - b) WHERE TOP OF ROCK IS LOWER THAN BOTTOM OF SUB-GRADE, SUITABLE NATIVE MATERIAL TO BE USED BETWEEN ROCK AND SUB-GRADE.
 2. OFF ROAD ALLOWANCE—USE SUITABLE NATIVE MATERIAL TO GRADE LEVEL.



WATER SERVICE—SEE NOTE 7

DETAIL 1

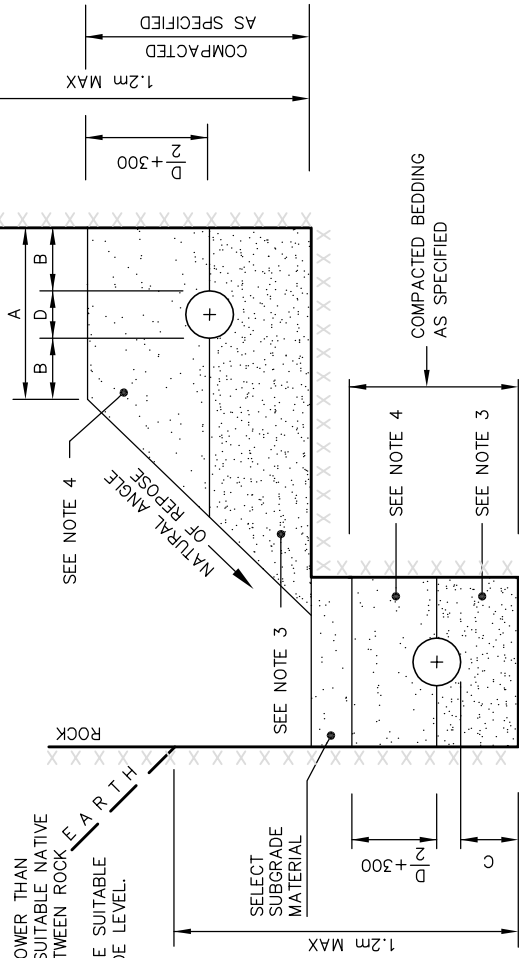
**SANITARY SEWERS, STORM SEWERS,
WATERMAINS & SERVICES IN A SEPARATE TRENCH**

NOTES:

1. D (O.D. OF PIPE) MEASUREMENT DOES NOT INCLUDE PIPE BELL.
2. THIS STANDARD TO BE READ IN CONJUNCTION WITH APPLICABLE SPECIFICATIONS, PLUS STANDARD GSSD-1225.010.
3. TRENCH BEDDING / EMBEDMENT MATERIALS TO SPRINGLINE OF PIPE SHALL CONSIST OF:
-IN ROCK TRENCH -GRANULAR 'A' OR 19mm CLEAR STONE (SEE NOTE 9)
-IN EARTH TRENCH -UNDER DRY CONDITIONS -BEDDING SAND OR GRANULAR 'A'
-UNDER WET CONDITIONS -GRANULAR 'A' OR 19mm CLEAR STONE (SEE NOTE 9)
4. UNLESS OTHERWISE SPECIFIED, THE COVER / EMBEDMENT MATERIAL FROM THE SPRINGLINE OF THE PIPE TO 300 mm ABOVE THE PIPE, SHALL CONSIST OF:
-IN ROCK TRENCH -GRANULAR 'A' (SEE NOTE 9)
-IN EARTH TRENCH -BEDDING SAND, GRANULAR 'A' (SEE NOTE 9)
5. THIS STANDARD IS TO BE APPLIED IN STABLE CONDITIONS, OR AFTER THE TRENCH HAS BEEN BROUGHT TO A STABLE CONDITION.
6. SLAG SHALL NOT BE USED FOR BEDDING OR BACKFILL MATERIAL.
7. DETAIL No. 1 SHALL ALSO APPLY FOR SEWER AND WATER SERVICES IN A COMMON TRENCH, WITH THE INVERT OF THE WATER SERVICE EQUALLING THE OVERT ELEVATION OF THE SEWER SERVICE, UNLESS OTHERWISE SPECIFIED. THE WATER SERVICE SHALL HAVE 75 mm MIN. EMBEDMENT / BEDDING MATERIAL AROUND IT.
8. ALL MAINS WITH A HORIZONTAL SEPARATION (CENTRE TO CENTRE) OF 1.5 METRES OR LESS, SHALL BE CONSIDERED TO BE IN A COMMON TRENCH, WHILE MAINS WITH A HORIZONTAL SEPARATION GREATER THAN 1.5 METRES, SHALL BE CONSIDERED TO BE IN SEPARATE TRENCHES.
9. NON-WOVEN GEOTEXTILE SHALL BE PLACED TO SEPARATE ROCK TRENCH OR CLEAR STONE FROM OTHER EMBEDMENT MATERIAL. (SEE DETAIL 3)
10. TRENCH WALLS TO BE SLOPED IN ACCORDANCE WITH SOIL TYPES AS DEFINED IN THE OCCUPATIONAL HEALTH AND SAFETY ACT AND REGULATIONS FOR CONSTRUCTION PROJECTS.
11. ALL DIMENSIONS ARE IN MILLIMETRES UNLESS OTHERWISE SPECIFIED.

DIMENSIONS

SYMBOL	MAINS	SERVICES
A	D + 600	600
B	300	---
C	150	150
D	O.D. OF PIPE	O.D. OF PIPE



DETAIL 2

**SANITARY SEWERS, STORM SEWERS
& WATERMAINS IN A COMMON TRENCH**

NON-WOVEN GEOTEXTILE TO BE USED WITH CLEAR STONE BEDDING / EMBEDMENT

NON-WOVEN GEOTEXTILE TO BE USED IN ROCK TRENCH WITH GRANULAR 'A' BEDDING/ EMBEDMENT

DETAIL 3

**GEOTEXTILE TREATMENT FOR
ROCK TRENCH AND CLEAR STONE APPLICATION**

DISCLAIMER OF WARRANTY
The data is provided "as-is", without warranty of any kind either expressed or implied. Any and all liabilities for damage, direct or indirect, however caused, and resulting in any way by use of the supplied data is the full and final responsibility of the user.

COPYRIGHT
All rights are reserved. No part of the supplied data may be reproduced, or transmitted to others, in any form or by any means, without the written permission of the CITY OF GREATER SUDBURY.



PIPE TRENCH DETAILS
**SANITARY SEWERS, STORM SEWERS,
WATERMAINS & SERVICES**

DRAWN BY: SAG/KLR	REV No: 4
DATE: 2003-03-03	REV DATE: 2019-02-26
SCALE: NTS	CAD/FILE No: A1944-1 (1 OF 1)
APP'D: M. FRAYNE	GSSD-1227.010