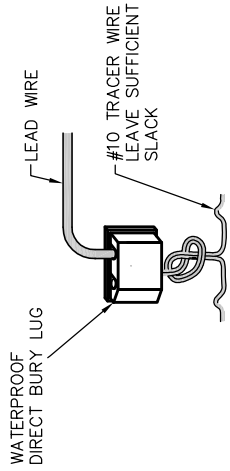
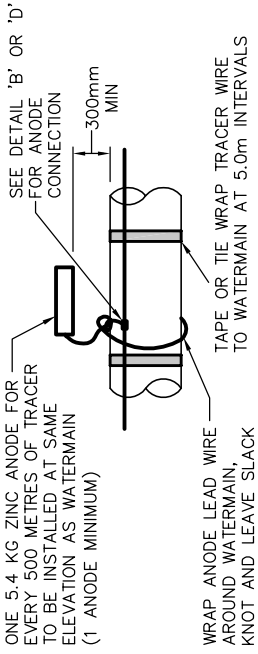


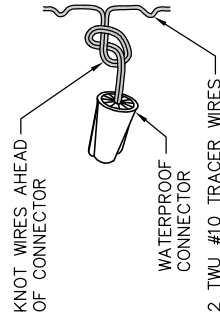
DETAIL 'A'
HYDRANT TRACER WIRE
ATTACHMENT
N.T.S.



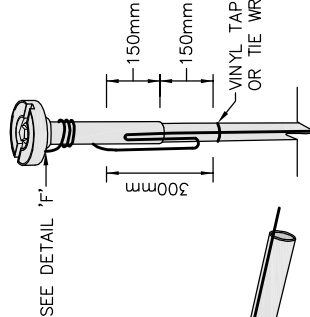
DETAIL 'B'
CONNECTION
N.T.S.



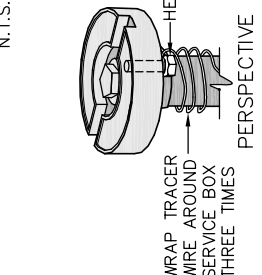
DETAIL 'C'
ANODE INSTALLATION
N.T.S.



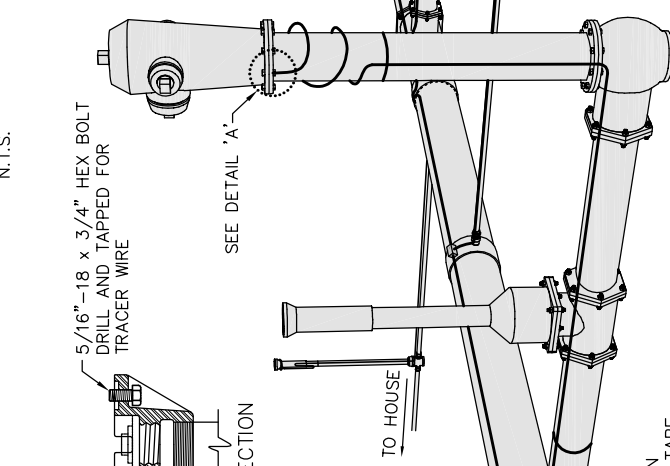
DETAIL 'D'
SPLICE CONNECTION
N.T.S.



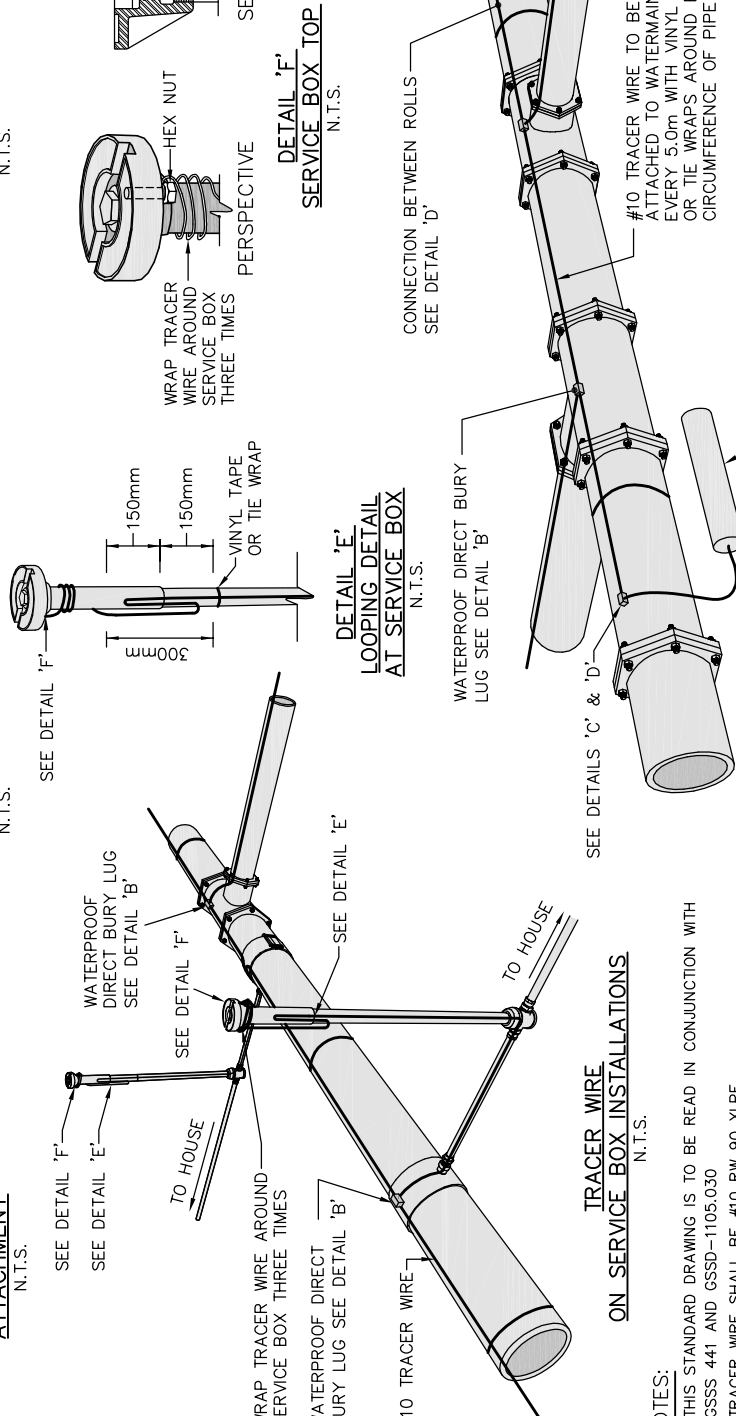
DETAIL 'E'
LOOPING DETAIL
AT SERVICE BOX
N.T.S.



DETAIL 'F'
SERVICE BOX TOP
N.T.S.



DETAIL 'A'



TRACER WIRE
ON SERVICE BOX INSTALLATIONS
N.T.S.

- NOTES:**
1. THIS STANDARD DRAWING IS TO BE READ IN CONJUNCTION WITH GSSS 441 AND GSSD-1105.030
 2. TRACER WIRE SHALL BE #10 RW 90 XLPE
 3. #10 TRACER WIRE TO BE ATTACHED TO WATERMAIN EVERY 5.0 m WITH VINYL TAPE OR TIE WRAPS AROUND FULL CIRCUMFERENCE OF PIPE
 4. TRACER WIRE NOT TO BE PLACED IN OR THROUGH CORROSION PROTECTION
 5. WATERPROOF CONNECTOR TO BE DRYCONN #10999 OR APPROVED EQUAL
 6. WATERPROOF DIRECT BURY LUG TO BE DRYCONN #90220 OR APPROVED EQUAL

TRACER WIRE INSTALLATION
ON WATERMAIN SYSTEM
N.T.S.

DISCLAIMER OF WARRANTY
The data is provided "as-is", without warranty of any kind either expressed or implied. Any and all liabilities for damage, direct or indirect, however caused, and resulting in any way by use of the supplied data is the full and final responsibility of the user.
COPYRIGHT
All rights are reserved. No part of the supplied data may be reproduced, or transmitted to others, in any form or by any means, without the written permission of the
CITY OF GREATER SUDBURY.



TRACER WIRE INSTALLATION
ON PVC WATERMAIN AND
APPURTENANCES

DRAWN BY: SAG/KLR	REV No: 2
DATE: 2012-02-01	REV DATE: 2019-02-25
SCALE: NTS	CAD/FILE No.:
APP'D: M. FRAYNE	A2233-1 (1 OF 1)
	GSSD-1110.000