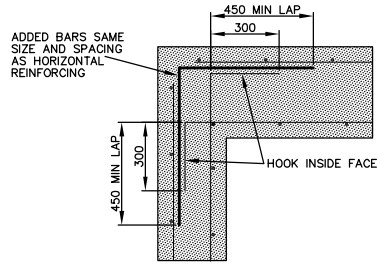
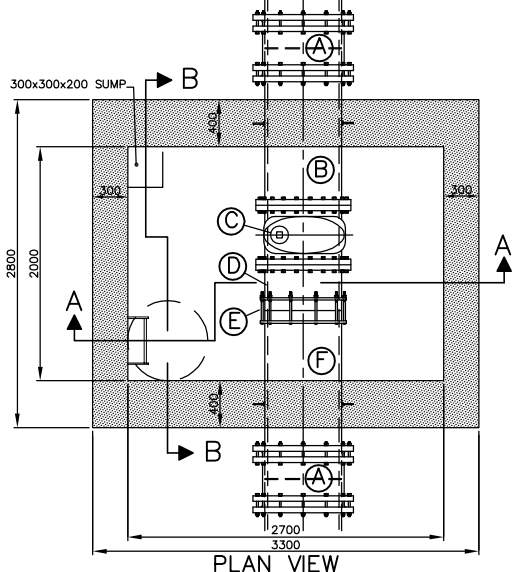


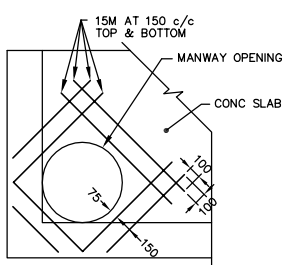
**CONSTRUCTION NOTES:**

1. REINFORCING STEEL TO HAVE MINIMUM 50 mm CLEAR COVER.
2. CLASS OF CONCRETE TO BE 32 MPa (AIR ENTRAINED) AT 28 DAYS.
3. IN OFF ROAD AREAS, ORIGINAL GROUND IMMEDIATELY ABOUT CHAMBER SHALL BE SLOPED TO DIRECT SURFACE RUNOFF AWAY FROM STRUCTURE ACCESS.
4. ADJUSTMENT UNITS TO BE FARGED ON THE OUTSIDE WITH 1:3 NON-SHRINK MORTAR MIX APPLIED 15 mm THICK.
- 5a. REINFORCING STEEL FOR REMOVABLE TOP SLAB:  
TOP BARS TO BE SIZE 15M AT 300 mm c/c BOTH WAYS.  
BOTTOM BARS TO BE SIZE 15M AT 150 mm c/c BOTH WAYS.
- b. REINFORCING STEEL FOR WALLS AND BASE SLAB:  
ALL BARS TO BE SIZE 15M AT 300 mm c/c BOTH WAYS.
6. FOUR LIFTING RINGS TO BE INSTALLED IN ROOF SLAB IN POSITIONS AS TO PROVIDE A BALANCED REMOVAL OF SLAB SHOULD IT BE NECESSARY.
7. THE WALL SECTION OF THE VALVE CHAMBER IS TO BE POURED DIRECTLY AROUND BOTH ITEMS B & F WHICH SHALL BE IN PLACE PRIOR TO ANY CONCRETE BEING POURED.
8. PIECES 'B', 'D', AND 'F' SHALL BE MIN. CL 53 DUCTILE IRON CONFORMING TO AWWA C150/C151 HAVING A CEMENT LINING C104 AND EXTERIOR ASPHALTIC/BITUMINOUS COATING.
9. ALL FLANGES ARE TO BE FACTORY WELDED TO AWWA C207 CLASS D.
10. HEIGHT OF VALVE CHAMBER STRUCTURE AND DEPTH OF WATERMAIN WILL BE BASED ON AN OVERALL VALVE HEIGHT OF 1570 mm FROM THE CENTRELINE OF THE WATERMAIN TO THE TOP OF THE VALVE OPERATING NUT, IF THE VALVE IS TALLER THE CONTRACTOR IS TO INCREASE THESE DIMENSIONS.
11. AFTER CASTING CONCRETE, ALL METALLIC FITTINGS & METALLIC PIPE SHALL HAVE CORROSION PROTECTION.
12. TRACER WIRE TO BE ATTACHED TO WALL AND BOTTOM OF DECK USING APPROVED CABLE STRAPS AT 600 mm SPACING.
13. TRACER WIRE CONTINUES THROUGH CONCRETE WALL THROUGH 6 mm  $\phi$  DRILL HOLE. HOLE TO BE SEALED WITH EXTERIOR SILICONE CAULKING BOTH SIDES.
14. ALL DIMENSIONS ARE IN MILLIMETRES UNLESS OTHERWISE SHOWN.

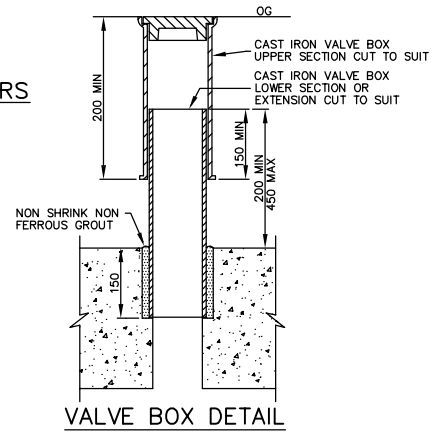
ITEM	DESCRIPTION (SEE SECTION B-B & NOTES)	ENDS	CORROSION PROTECTION
(A)	600 mm CAST IRON MECHANICAL JOINT SOLID SLEEVES	—	FULL
(B)	600 mm X 1350 mm DUCTILE IRON (CEMENT LINED) CL 53 c/w WALL SHEAR FLANGE	FLANGE & PLAIN	FULL
(C)	600 mm GATE VALVE MEETING THE REQUIREMENTS OF AWWA C500	FLANGE & FLANGE	FULL
(D)	600 mm DUCTILE IRON JOINT ADAPTER DISTANCE PIECE (CEMENT LINED) CL 53	FLANGE & PLAIN	FULL
(E)	600 mm SMITH-BLAIR #411 STEEL COUPLING OR APPROVED EQUAL	—	FULL
(F)	600 mm X 1450 mm DUCTILE IRON (CEMENT LINED) CL 53 c/w WALL SHEAR FLANGE	PLAIN & PLAIN	FULL
(G)	50 mm CORPORATION MAIN STOPS AS PER GSSS 701	—	FULL



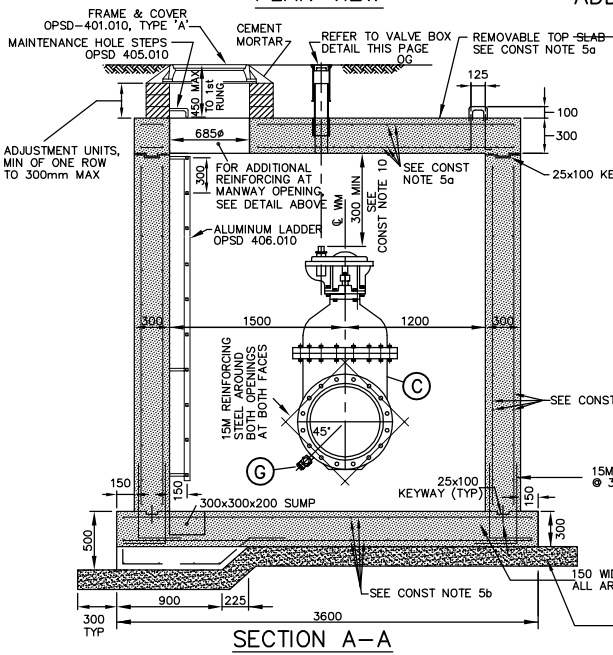
PLAN VIEW  
LAPPING DETAIL AT CORNERS



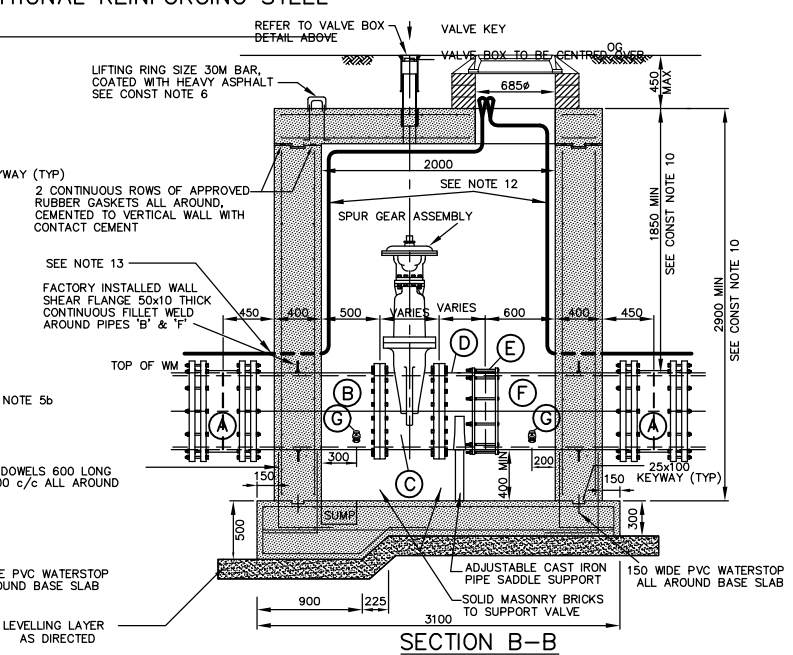
MANWAY OPENING  
ADDITIONAL REINFORCING STEEL



VALVE BOX DETAIL



SECTION A-A



SECTION B-B



**CAST IN PLACE  
VALVE CHAMBER  
FOR 600 mm $\phi$  WATERMAIN**

DRAWN BY: WK/SS/RF/BK	REV No: 4
DATE: 2003-03-03	REV DATE: JAN/2013
SCALE: NTS	CAD/FILE No.: A1961-1 (1 OF 1)
APP'D: PETER CHIESA	<b>GSSD-1100.014</b>

DISCLAIMER OF WARRANTY : The data is provided "as-is", without warranty of any kind either expressed or implied. Any and all liabilities for damage, direct or indirect, however caused, and resulting in any way by use of the supplied data is the full and final responsibility of the user.  
 COPYRIGHT : All rights are reserved. No part of the supplied data may be reproduced, or transmitted to others, in any form or by any means, without the prior written permission of the CITY OF GREATER SUDBURY.