

Consbec Group Emulsion Plant Public Hearing

Planning Committee Agenda

5:30pm, April 4, 2006

Agenda

- Who are we?
- What are we doing?
- Where will we construct?
- When will construction occur?
- Why construct a new plant?
- How will it operate?
- Conclusion

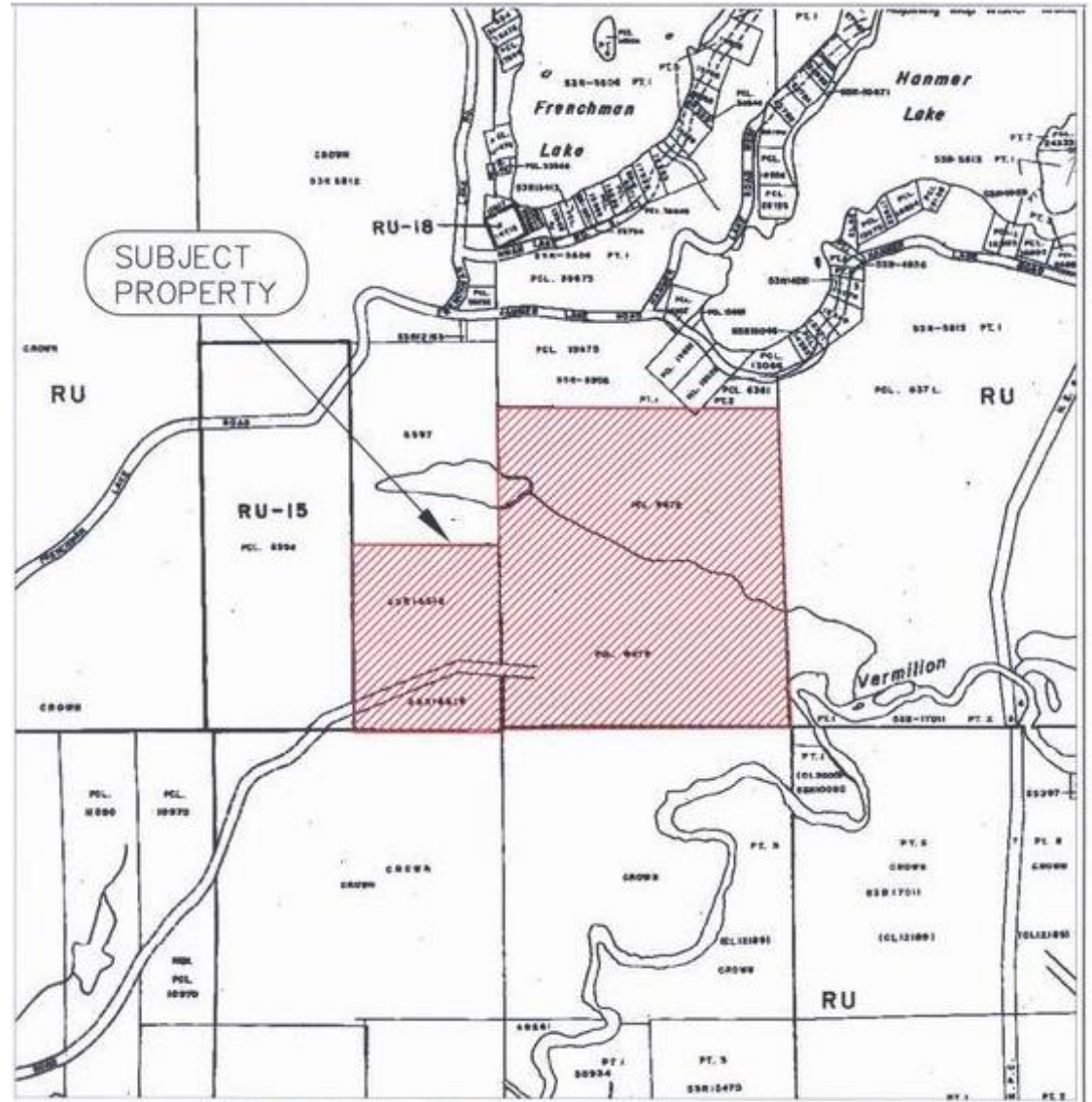
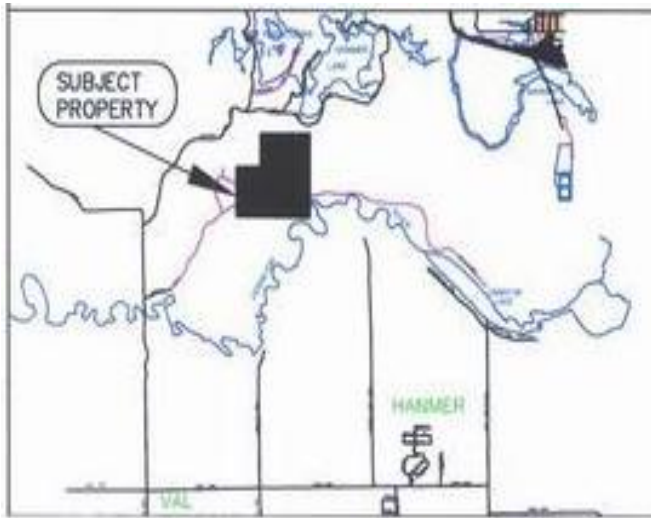
Who Are We?

- Consbec Group of companies have been drilling and blasting for over 25 years out of the Val Caron industrial park.
- Consbec has been a strong employer in the Valley and supporter of various Charitable organizations and organized athletics.
- Consbec is privately held.
- Consbec has held its explosives storage operations in Hanmer Township, along Desmarais Road corridor for over 18 years.

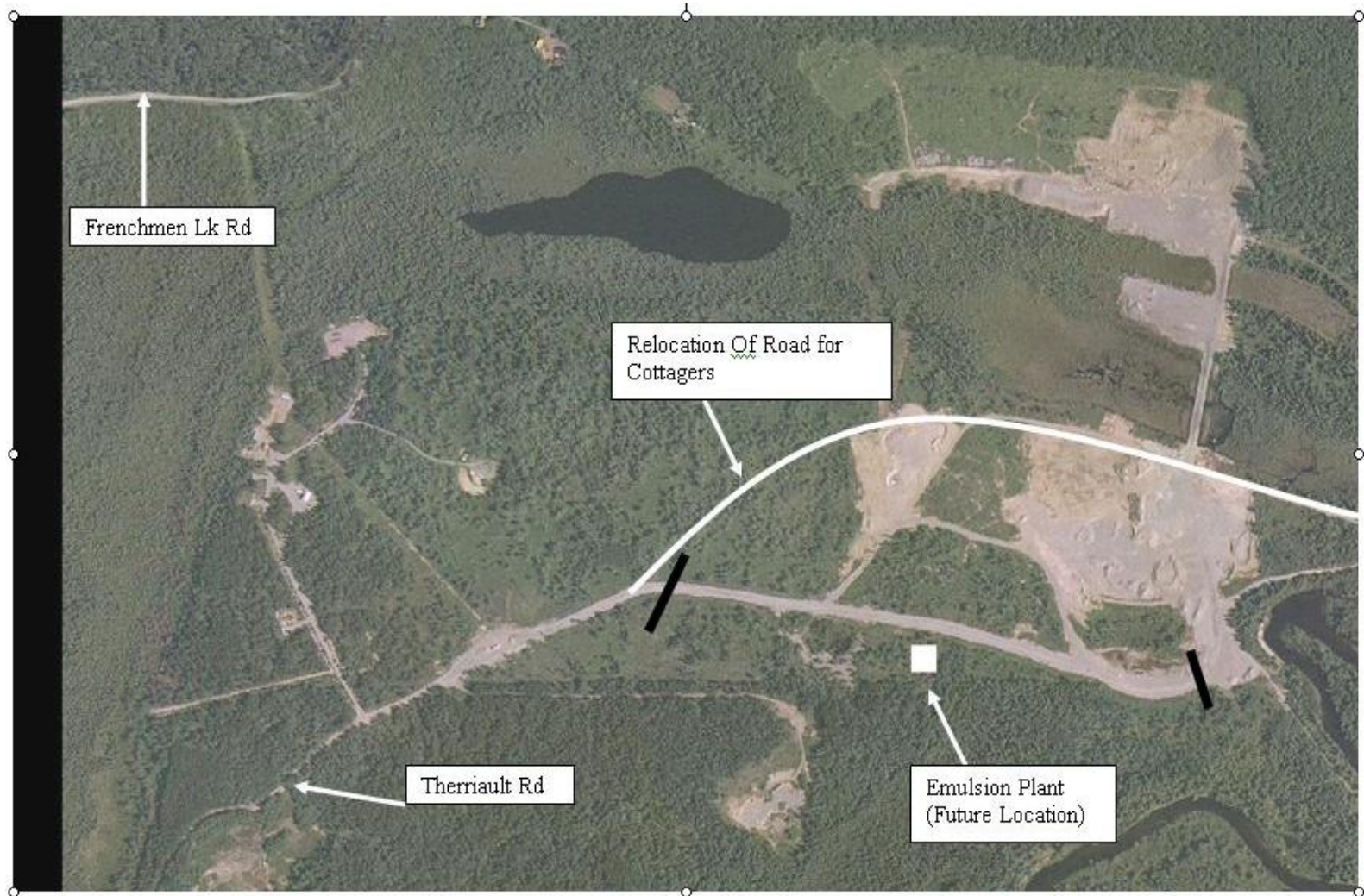
What Are We Proposing?

- Consbec is proposing to construct a new emulsion plant at its existing, federally approved, factory site (F442).
- The proposed dimensions of the pre-engineered building are 50'x70'.
- The new plant will manufacture emulsion explosives.
 - Consbec uses up to 7,500kgs daily (peak time)
 - Plant storage capacity (QD) of 60,000kgs
 - Raw materials capacity (QD) of 10-20,000kgs
 - Plant design (QD) of 90,000kgs (emulsion + raw)
- The new facility and ancilliary equipment will necessitate hiring 10 additional employees from the Valley.

Where Will The New Plant Be?



Where Will The New Plant Be?



Pcl 8672, Lot 4, Con 6, Hanmer Twp.

When Will Construction Occur?

- Consbec is proposing to start construction of the new building as soon as the necessary local, provincial, and federal approvals are received.
- We hope to start construction by early summer with a manufacturing start date targetted for fall.

Why A New Plant?

- Competitive necessity resulting from evolving duopoly in explosives industry (Orica and Dyno).
- Shift from bulk AN/Anfo operations to safer bulk emulsion technology.
 - Insolubility
 - Minimizes bootlegs, and reduces toe
 - Reduce labour injuries ... loading, de-watering
- Improved product quality control.

How Will It Operate?

- Plant Operation
 - Electronic control system
 - Local people running the plant
- Safety
 - Controlled and regulated by ERD including
 - Various electronic safety controls/switches
 - Setback distances to homes, highways, explosives
 - Raw materials, explosives storage limits
 - Finished product quality control requirements



Natural Resources
Canada
Explosives Regulatory Division

Ressources naturelles
Canada
Division de la réglementation des explosifs

File: XP-3000-W4-F442

28th February, 2006

Richard Bertrand
Regulatory Coordinator
Whitson Manufacturing Inc. (Consbec)
2725 Belisle Drive
Val Caron, ON. P3N 1B3
Tel: (705) 897-4971
Cell: (705) 690-0885
Fax: (705) 897-4565

Re: Whitson's new Emulsion Explosives Plant at Hanmer

City of Greater Sudbury
To whom it may concern

Whitson Manufacturing Inc. is planning to build an emulsion explosives manufacturing facility on its explosives factory site (XP3000-W4-F442) at Hanmer Township.

This site will be regulated by the Explosives Regulatory Division (ERD) of Natural Resources Canada. Any explosives manufacturing on this site must meet the requirements set out in the Explosives Act and Regulations and must also pass an environmental assessment satisfying the Canadian Environmental assessment Act.

Any explosives factory must be licensed before it may produce any explosives and will be inspected before it starts production. The licensing procedure looks at the maximum quantities of explosives that may be on the site and makes sure that these are far enough away from off-site buildings or roads so that the chance of injury to any member of the public is very unlikely should there be an explosion.

Any change to equipment, processes, explosives quantities or the number of people allowed on site require an amendment to the licence. Most explosives factories get inspected at least once per year against their licence.

ERD does not inspect for compliance with building codes, electrical codes, provincial codes or local by-laws

If you have any questions about the ERD, our Act and Regulations or the safety of this proposed plant in particular do not hesitate to contact us. Some information is available on our web site listed below.

Sincerely yours

John Buszard
Senior Inspector of Explosives

580 Booth St., 15th Floor Phone: (613) 948-5188
Ottawa, Ontario K1A 0E4 Fax: (613) 948-5195
E-mail: jbuszard@nrncan.gc.ca
Web Site: <http://www.nrncan.gc.ca/mms/explosif>

MODIFIED TABLE FOR HAZARD DIVISIONS 1.1 & 1.5

NEQ kg	Quantity-Distance metres					
	D2	D4	D5	D6	D7	D8
50	10	30	180	45	270	400
60	10	32		45		
70	10	33		46		
80	11	35		48		
90	11	36		50		
100	12	38		53		
120	12	40		55		
140	13	42		60		
160	14	44		63		
180	14	46		65		
200	15	47		65		
250	16	51		70		
300	17	54		75		
350	17	57		80		
400	18	59		83		
450	19	62		88		
500	20	64		90		
600	21	68		95		
700	22	72		100		400
800	23	75		105		415
900	24	78		108		430
1000	24	80		113		445
1200	26	86		120		475
1400	27	90		125		500
1600	29	94		130		520
1800	30	98		135		540
2000	31	105	180	140	270	560
2500	33	110	185	153	275	610
3000	35	120	205	163	305	640
3500	37	125	220	170	330	680
4000	39	130	235	178	350	710
5000	42	140	255	190	380	760
6000	44	150	270	203	405	810
7000	46	155	285	213	425	850
8000	48	160	300	223	445	890
9000	50	170	310	235	465	930
10000	52	175	320	240	480	960
12000	55	185	340	255	510	1020
14000	58	195	360	270	540	1080
16000	61	205	375	280	560	1120
18000	63	210	390	295	590	1180
20000	66	220	405	305	610	1220
25000	71	235	435	325	650	1300
30000	75	250	460	345	690	1380
35000	79	265	485	365	730	1460
40000	83	275	510	380	760	1520
50000	89	295	550	410	820	1640
60000	94	315	580	435	870	1740
70000	99	330	610	460	920	1840
80000	105	345	640	480	960	1920
90000	110	360	670	500	1000	2000

GUIDELINES FOR BULK EXPLOSIVE FACILITIES

Minimum Requirements

Base Factories, Satellite Sites, Temporary Bulk Sites,
Mechanical ANFO Operations (Under 100 t),
Trials and Demonstrations

December 14, 2005

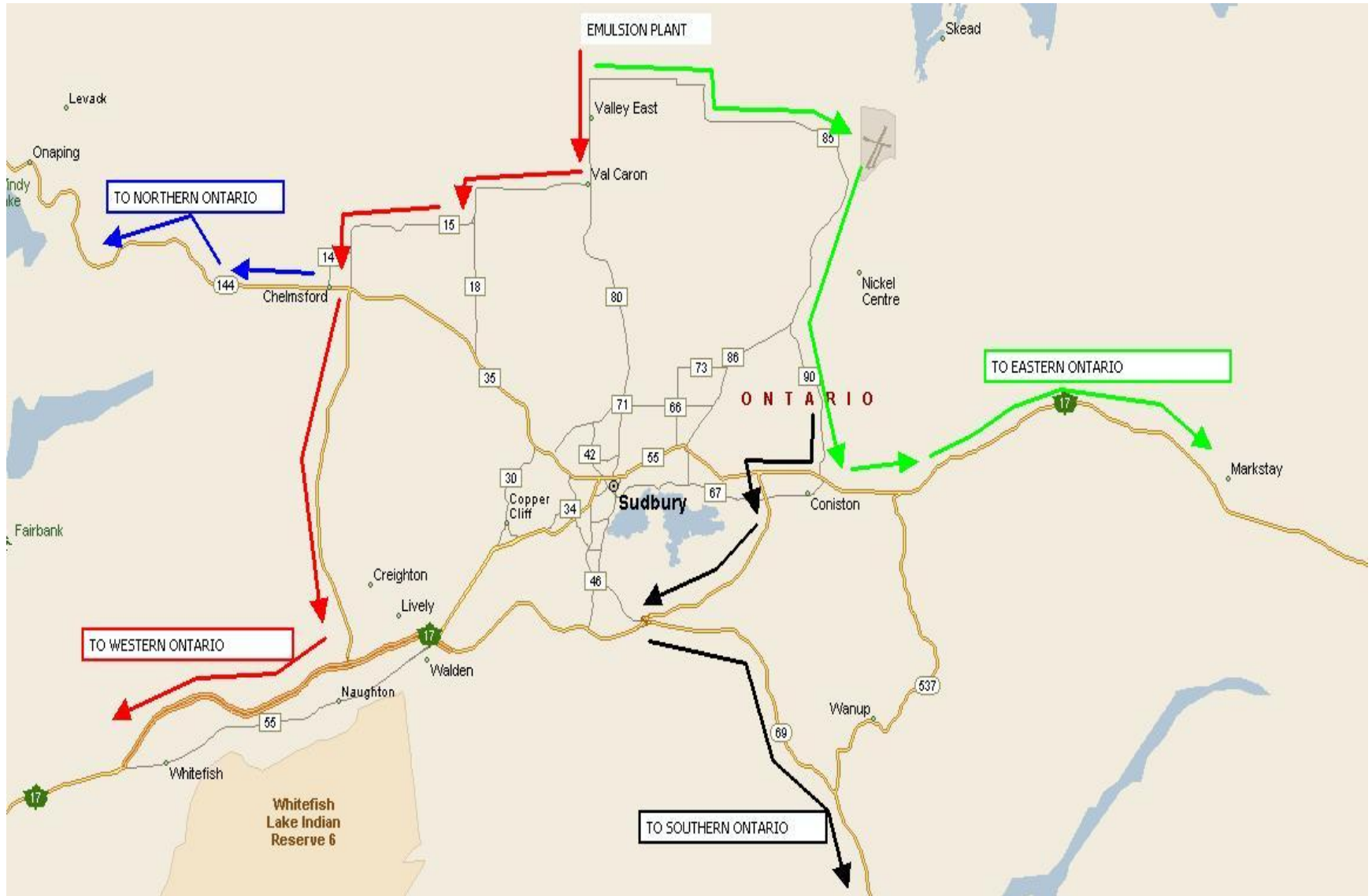
Revision 4

Website: www.nrcan.gc.ca/mms/explosif/over/over_e.htm

How Will It Operate?

- Environment
 - Spillage containment (within building)
 - Natural Resources Canada required an Environmental Assessment as required by “The Canadian Environmental Assessment Act (CEAA)”
 - Environmental Assessment Approval on January 31, 2006
- Trucking
 - Main trucking routes to minimize exposure to public (status quo)
 - Trucking traffic to stay same (status quo)
 - Reduced explosives volumes (raw in, explosives out)

Trucking Routes



In the Back-Yard!

- In excess of 25,000,000kgs of explosives move in and out of Sudbury annually.
 - Over 70,000kgs every day of the year
- Shipments through town of Levack to service mines
- Shipments along Lasalle Blvd. daily to service Stobie Mine
- Hanmer area (Desmarais corridor) serviced mines for past 20 years

Conclusion

- The plant will be operationally safe (ERD).
- The plant will be environmentally safe (Natural Resources Canada).
- The plant will be regulated, approved, and inspected (ERD).
- The plant will reduce explosives shipments into the existing storage facility.
 - Reduce exposure of public to explosives hauled by Consbec
- Trucking routes will not change.
 - Hauling already going on in back yard ... nothing new and no increase
- The plant will be constructed adjacent to an existing/approved factory site.
 - Recommendation from staff was negative 8 years ago but, council voted in favour
 - Since receiving this initial approval from council the site has operated safely and had an excellent track record with ERD
- No future expansion planned.
 - At setback distance limits (70,000kgs now to 90,000kgs future)