

2014 Budget at a Glance

Strategic Goals and Strategies

The City of Greater Sudbury provides municipal services to approximately **160,000 citizens** within its vast geographic boundaries.

Greater Sudbury City Council has established **strategic goals** in order to create positive outcomes for citizens and the community as a whole. The **key priorities**, as outlined in the City of **Greater Sudbury Strategic Plan 2012-2014**, are **Infrastructure, Growth and Jobs, Image, Tourism and Healthy Community**. Each priority is supported by projects and actions.

These priorities help the City of Greater Sudbury in managing an annual **operating budget of \$502 million**.

The annual budget process is guided by City Council. Each department is responsible for overseeing **numerous programs and services that keep the City running every day, and provide a great northern lifestyle to residents**.

The **operating budget** is dedicated to **day-to-day operations**, including programs and services in more than 30 diverse sectors such as policing, public health, recycling and leisure programs.

2013 Operating Budget: **\$500 million** ➔ 2014 Operating Budget: **\$502 million**

The **capital budget** is dedicated to **one-time expenditures and projects** such as road construction, recreation facilities, building upgrades and retrofits, equipment renewal and replacements. Of the \$95 million, almost \$38 million is dedicated to road capital investments.

2013 Capital Budget: **\$109 million** ➔ 2014 Capital Budget: **\$95 million**

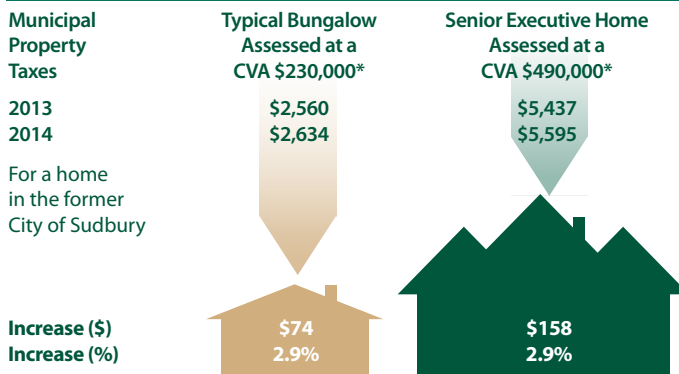
2014 Operating Budget at a Glance

This operating budget delivers on Council's request to maintain low property taxes. The operating budget, provides a municipal levy of \$230 million representing an increase of 2.9%, net of assessment growth.

The following is a breakdown of the tax increase.

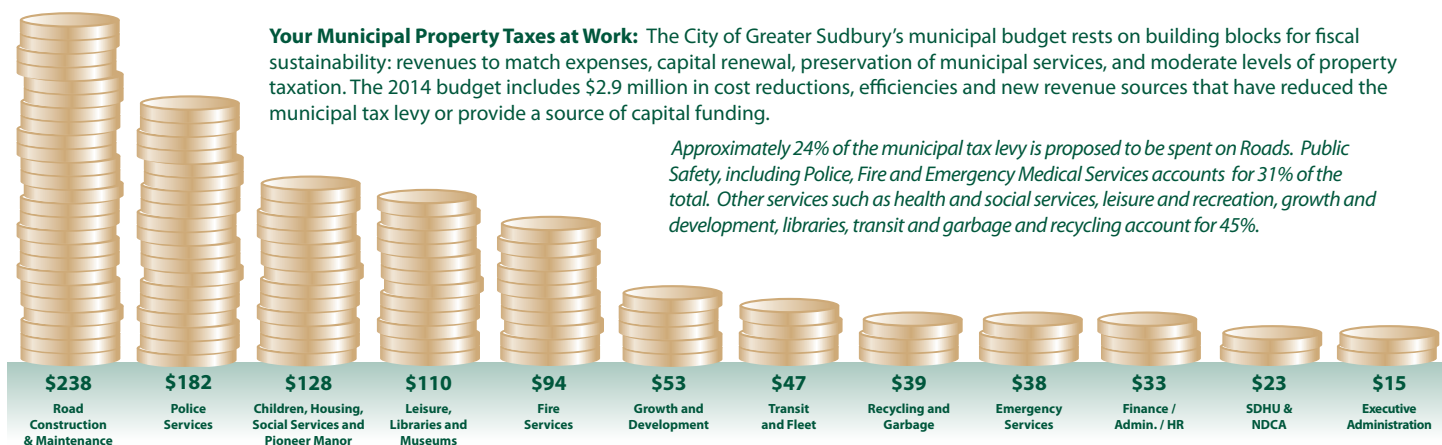
	Levy increase (millions)	Municipal Tax Increase
Provincially Mandated (Incl. decline in OMPF)	\$3.2	1.4%
Maintaining Services	\$2.8	1.3%
Additional Capital Investments	\$0.7	0.3%
Outside Boards (Police, NDCA & SDHU)	\$1.4	0.6%
Total Municipal Levy Increase	\$8.1 M	3.6%
Less Assessment Growth		(0.7%)
Total Municipal Levy Increase	\$8.1 M	2.9%

Impact of 2014 Municipal Tax Increase on Typical Households



* 2014 phased in values of \$208,000 and \$443,000. CVA = Current Value Assessment

Municipal Services per \$1,000 in property taxes



Your Municipal Property Taxes at Work: The City of Greater Sudbury's municipal budget rests on building blocks for fiscal sustainability: revenues to match expenses, capital renewal, preservation of municipal services, and moderate levels of property taxation. The 2014 budget includes \$2.9 million in cost reductions, efficiencies and new revenue sources that have reduced the municipal tax levy or provide a source of capital funding.

Approximately 24% of the municipal tax levy is proposed to be spent on Roads. Public Safety, including Police, Fire and Emergency Medical Services accounts for 31% of the total. Other services such as health and social services, leisure and recreation, growth and development, libraries, transit and garbage and recycling account for 45%.

Final due dates for all property classes:

June 4, 2014 and July 4, 2014

If you are an owner of both residential and non-residential properties, you will receive separate tax bills.

For information about your Municipal Property Assessment contact:

Municipal Property Assessment Corporation,
1730 Regent Street, Suite 1, Sudbury, ON P3E 3Z8
Telephone: 1-866-296-6722 www.mpac.ca