

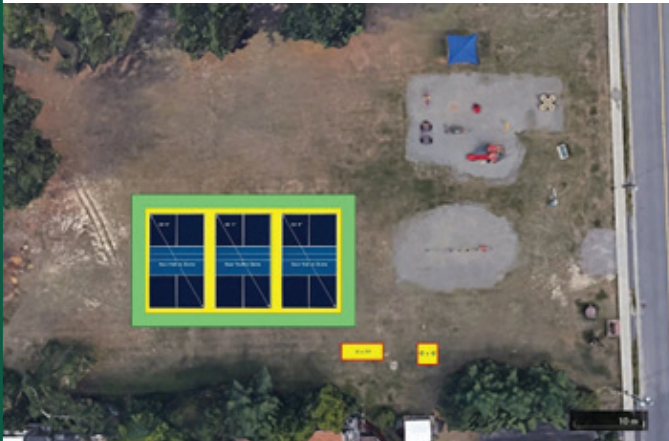
# The Why?



Penman Playground Association's goal is to expand Penman Park and increase participation in sports and physical activity for the community.

We want to create a space for children and youth to gather, play, be social and have fun.

In addition to increasing opportunities for physical activity, expansions to the playground will bring a sense of community and help develop healthy habits **in all seasons!**



Conceptual drawing of sports surface with two pickleball courts and a basketball court.

The Penman Playground Association is a group of volunteers dedicated to revitalizing Penman Park.

**Stay in touch.  
Follow us on Facebook!**

**Facebook.com/**PenmanPlaygroundAssociation****



# Parc **Penman** Park



**FUNDRAISING TO  
REVITALIZE OUR  
PENMAN  
OUTDOOR RINK**



## What's been going on at Penman Playground Association (PPA)?

Working closely with community partners and city staff, the group of volunteers from the PPA have been busy since 2016!

**2015:** The Penman Playground Association is founded and the first neighbourhood canvass for community input takes place.

**2016:** First ice surface is created with the help of the volunteers at Fire Station 20 in Garson.

**2018:** Assisted by the Garson Falconbridge Community Action Network, the Association successfully applies for HCI funding to construct a shed with access to water for flooding.

**2022:** The PPA's second HCI application is submitted and accepted to install electricity and four poles with new lights around the area.

## ▶ What's NEXT?

Let's take this revitalization to the next level!

The installation of a multi-seasonal pad will allow the park to host an ice-pad throughout the winter months and allow an area to establish pickleball and basketball courts for spring, summer and fall.

**Our vision is to install a solid multi-sport surface that can be used all year!**



## WHAT YOU CAN DO TO HELP

There are so many ways to help and get involved:

- Provide your name as a volunteer.
- Create awareness by visiting, liking and sharing our Facebook page.
- Be a Capital Sponsor by committing a monetary or in-kind donation.
- In-kind donations can be for building materials (fill, gravel, etc.), fencing and equipment.
- Opportunities to build your corporate brand through sponsorship.

## Year Round Multi-Sport Surface Project Description ▼▼▼▼▼▼▼▼▼▼

Plans for the next phase of the Penman Playground revitalization may include:

- Creation of a 150' x 65' multi-seasonal pad
  - An ice pad in the winter
  - Pickleball and basketball courts for use during warmer months
  - Fence enclosure around perimeter
  - Four benches
- Water drinking fountain
- City-approved storage shed for benches, snow blower, BBQ, etc.
- Trees to provide shade

## OKAY - So how much?

**Estimated Project Total**

**\$475,000**

- ▶ Multi-surface pad - 150' x 65'
- ▶ Fencing around perimeter
- ▶ Excavation and site work
- ▶ Basketball nets and posts
- ▶ Player benches
- ▶ Pickleball posts
- ▶ Contingency (30%)

