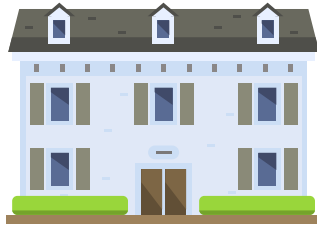


Greater Sudbury – Our Tax Rates and Property Taxes



Your property tax bill is calculated using the value of your home, assessed by MPAC, times the total tax rate

Current Value Assessment:
\$230,000

Current Value Assessment:
\$550,000

Tax Levy Increase:
4.8%

Tax Levy Increase:
4.8%

Tax Bill:
\$3,128*

Tax Bill:
\$7,481*

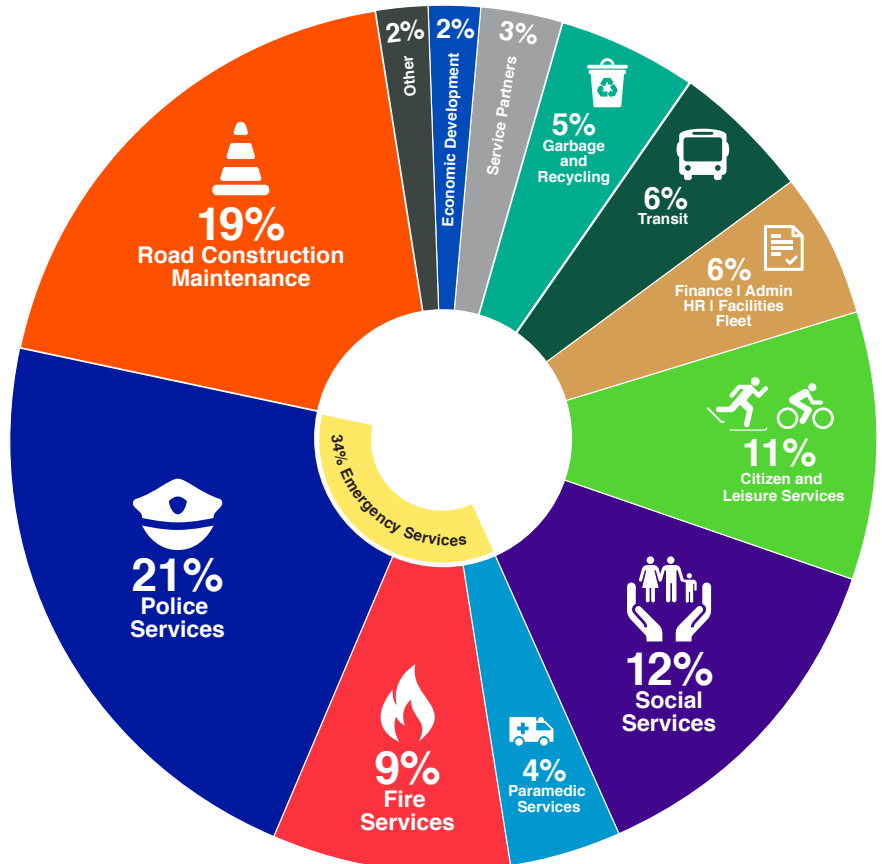



*Municipal portion only, subject to change based on the Tax Policy anticipated in Q2 of 2020.



Learn more at greatersudbury.ca/budget

Where do your property taxes go?




Greater Sudbury is one of the lowest-taxed municipalities in the province among cities with more than 100,000 population


We benchmark our performance against our peers in order to identify and implement best practices