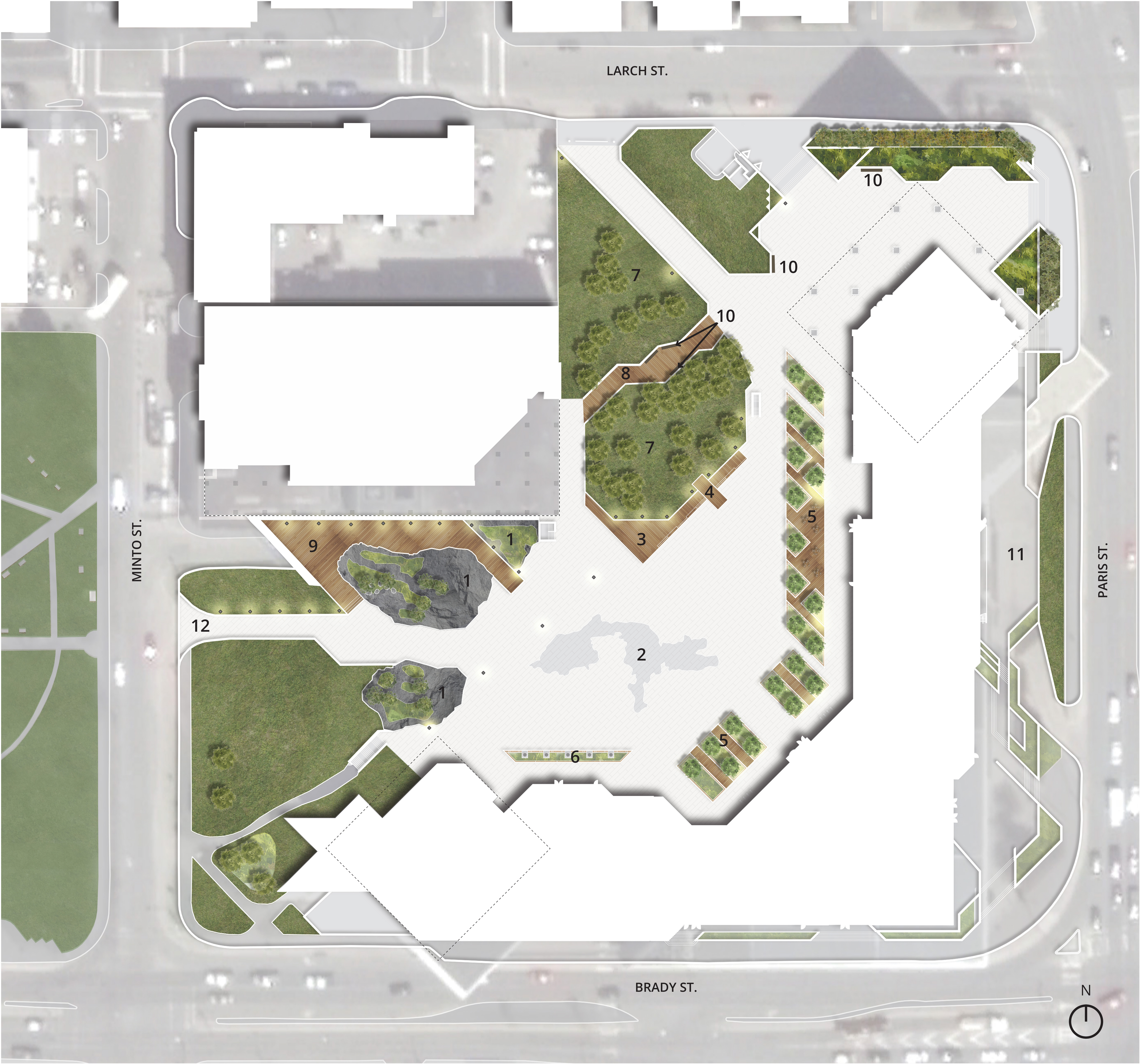


CONCEPT PLAN  
TOM DAVIES SQUARE  
GREATER SUDBURY, ON

- 1. Rock outcroppings with wind swept pine trees, blueberry bushes, reclamation grasses and mineral rock accents to reflect the Northern Ontario Landscape.
- 2. A motif of Ramsey Lake integrated into the paving pattern.
- 3. Elevated stage and performance space with south facing seating.
- 4. A south facing stage called “the dock” with a lush green backdrop behind.
- 5. Boardwalk seating area with movable cafe style tables and chairs covered by a lush green tree canopy.
- 6. Elevated planting bed with flag poles.
- 7. Lawn space with large existing Silver Maple trees for lounging and picnics.
- 8. The two lawn islands are connected with a center boardwalk.
- 9. Boardwalk/deck area
- 10. Refurbished benches
- 11. East entrance: future phase of development
- 12. West entrance: future phase of development



Mark Elliott  
Associates