





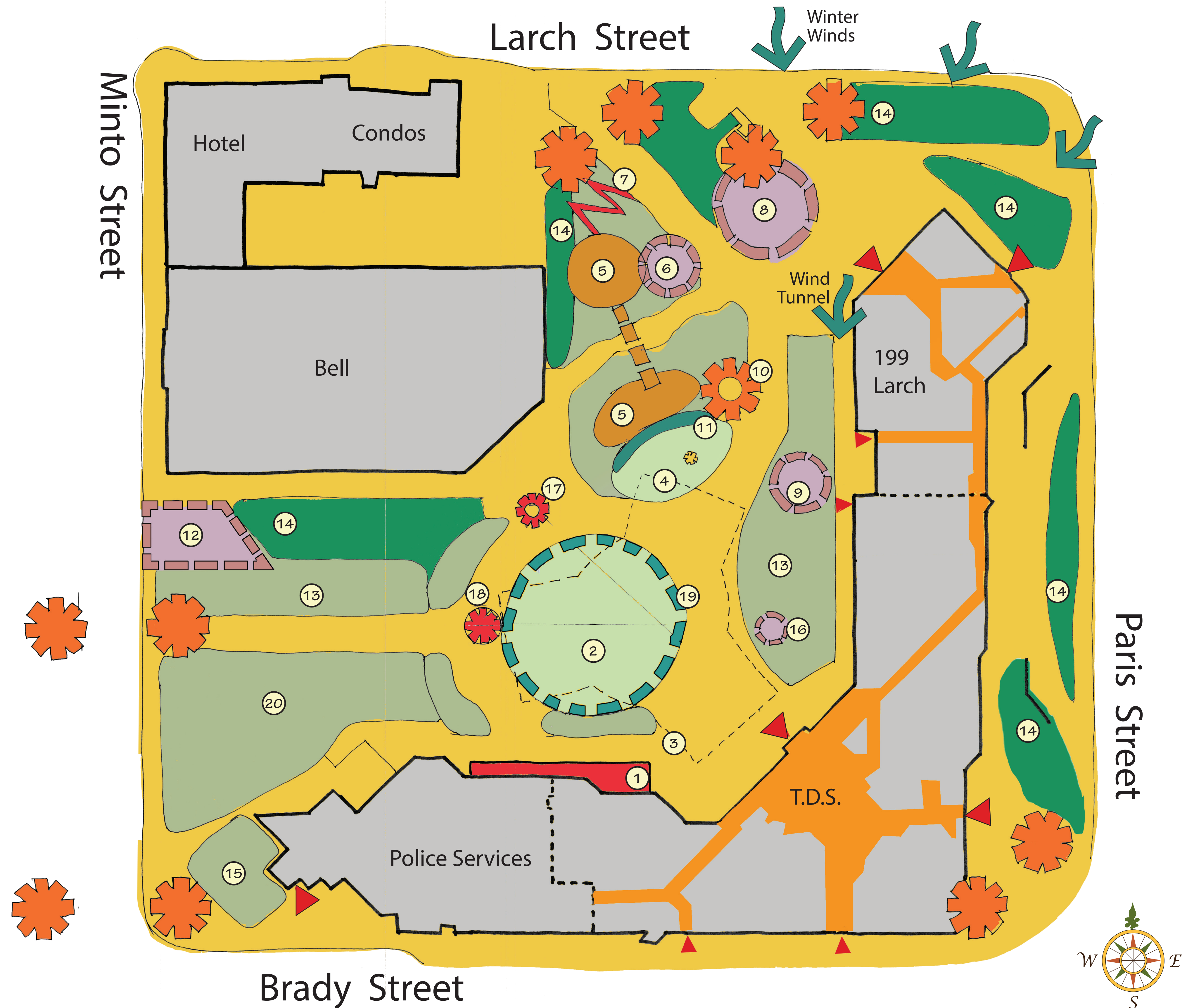


## LEGEND

- |   |                                       |   |                                   |
|---|---------------------------------------|---|-----------------------------------|
|  | Entry Feature/Gateway                 |  | Primary Access/Egress             |
|  | Pedestrian/Light Service Hard Surface |  | Northern Forest Thematic Planting |
|  | Green/Open Space/Planting Area        |  | Internal Circulation              |

- |  |   |
|--|---|
| <p>1 Proposed accessible ramp to rooftop amenity areas/redesigned stairs oriented into central plaza.</p> <p>2 Mult-purpose plaza area (old fountain removed)</p> <ul style="list-style-type: none"> <li>• 5 Flags</li> <li>• Rink and or winter cinema</li> <li>• Shallow reflecting pond (quick drain converts to open space)</li> <li>• Projection mapping surface</li> </ul> <p>3 Arabesque Triad Tent (rental)</p> <ul style="list-style-type: none"> <li>• 3000 people standing capacity</li> <li>• 1500-2000 seating capacity</li> <li>• Concerts, conferences, weddings, festivals</li> <li>• Flexible layout configuration for smaller events</li> </ul> <p>4 Interactive water feature area</p> <ul style="list-style-type: none"> <li>• Sustainable low /energy design</li> <li>• Interpretive theme development opportunity</li> <li>• Incorporate seating/fire/water/ice theme</li> <li>• Play opportunity</li> </ul> <p>5 Silver maples on berms</p> <ul style="list-style-type: none"> <li>• Majority of trees saved and featured as asset</li> <li>• Introduce new maple plantings for future shade</li> <li>• Low impact decking areas with seating /lighting</li> <li>• on top of berms.</li> <li>• Connect berms which bridge</li> </ul> <p>6 Play space opportunity</p> <p>7 Accessible ramp</p> <p>8 Interpretive feature/functional art</p> <ul style="list-style-type: none"> <li>• Sudbury History/ Municipality/ Junction Creek storylines.</li> </ul> <p>9 Outdoor kitchen to facilitate special events and programming</p> <p>10 Multi-purpose warming house/public washroom</p> <ul style="list-style-type: none"> <li>• Integrate over parking garage stairwell</li> </ul> <p>11 Retaining wall/play feature integrated into south facing slope</p> | <p>12 Parking garage entry upgrades</p> <ul style="list-style-type: none"> <li>• Artwork on façade</li> <li>• LED lighting and surfacing upgrade of pedestrian corridor/wall treatment</li> </ul> <p>13 Existing raised planter area</p> <ul style="list-style-type: none"> <li>• Reconfigure planting with raised planters and movable seating.</li> </ul> <p>14 Thematic planting opportunity/screening/buffering</p> <ul style="list-style-type: none"> <li>• North wind control/responsive design</li> </ul> <p>15 Sculpture /thematic planting opportunity</p> <p>16 Tom Davies plaque</p> <p>17 AV / Projection mapping tower</p> <ul style="list-style-type: none"> <li>• Build as roof structure over refurbished garage stairwell to provide weather protection.</li> </ul> <p>18 Ceremonial Christmas tree</p> <p>19 Terraced community garden/food production</p> <p>20 Walk of fame</p> <p>21 Skate/BMX Park</p> <p>22 Open air covered walkway connects accessible parking with "front door"</p> <p>23 New stairs create opportunity to address north wind issue</p> <p>24 Porte-cochere</p> <p>25 Accessible parking</p> <ul style="list-style-type: none"> <li>• At grade with plaza floor elevation</li> <li>• Minimal impact on Larch St (a new driveway)</li> </ul> <p>26 One story atrium structure</p> <ul style="list-style-type: none"> <li>• Establishes accessible "front door"</li> <li>• Address north wind issue</li> <li>• Art and historic display and interpretive opportunity</li> <li>• Special event program space</li> <li>• 4 season staff/public amenity space</li> </ul> |
|--|---|



# Tom Davies Square Courtyard Redesign

## Preliminary Schematic Plan: Option A

Feb. 2016

ARCHITECTURE | 49

