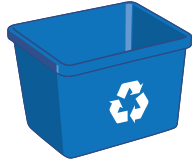


## Residential Waste Collection



**26,590**

# of blue boxes provided



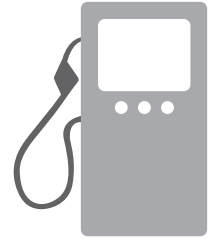
**2,450**

# of Big Blues sold



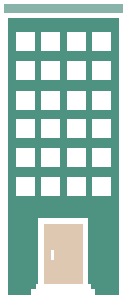
**11,955**

# of green carts provided



**676,358**

litres of gasoline  
used to collect waste



### High Density Residential Properties ( $\geq 7$ units)

**354**

properties with 12,336  
residential units



### Multi-Type Properties

(non-residential with residential units)

**176**

residential units  
in properties with  
7 residential units  
or more

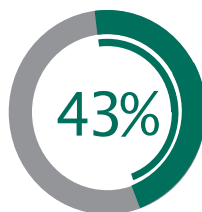
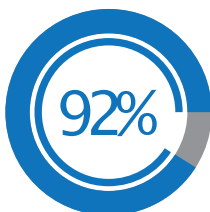
**199**

residential units  
in properties with  
2 to 6 residential units

**317**

residential units  
in properties with  
one residential unit (1:1)

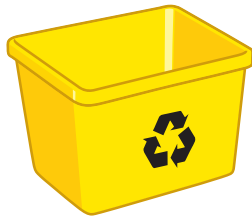
## Participation Rate (2021)



**951**

kilograms of waste generated  
per household  
(439 kg diverted/recycled | 512 kg disposed)

## Non-residential Collection (Participants)



**176**  
# of Yellow Boxes



**45**  
# of Yellow Bags



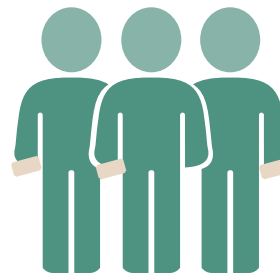
**11**  
# of Yellow Carts

---

## Special Event Collection (Blue Box Recycling and Organics)

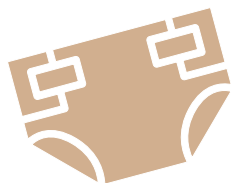


**2**  
# of special events  
that requested recycling/  
organics collection



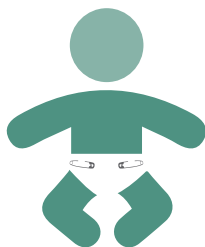
**5,200**  
# of participants  
at Special Events  
(estimate according to event organizers)

## Support Programs



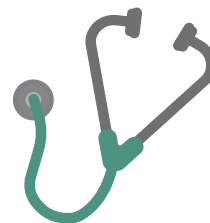
**928**

# of diaper exemptions



**31**

# of cloth diaper rebates



**225**

# of medical exemptions



**2**

# of pet digesters



**28**

# of pet waste exemption



**77,470**

# of garbage bag tags sold  
(individual tags)



**21**

# of presentations, events,  
tours, requests for mascots, etc.



**2,799**

# of field inspections/home visits

## WASTE WISE



**31,600**

# of waste wise app subscribers  
(running total since beginning)



**19,748**

# of waste wise app new subscriptions in 2021



**20,780**

# of residents set active reminder alerts for collection day



**810,082**

# of garbage pick-up schedules viewed



**21,065**

# of addresses searched



**524,727**

# of materials searched

### Top 5 items searched



1. Garbage
2. Pet Waste
3. Paper Towels
4. Clothes
5. Plastic Bags

## Requests and Website



**644,808**

# of times someone viewed our section on the website

**508,882**

# of different people viewed our section on the website



**14,244**

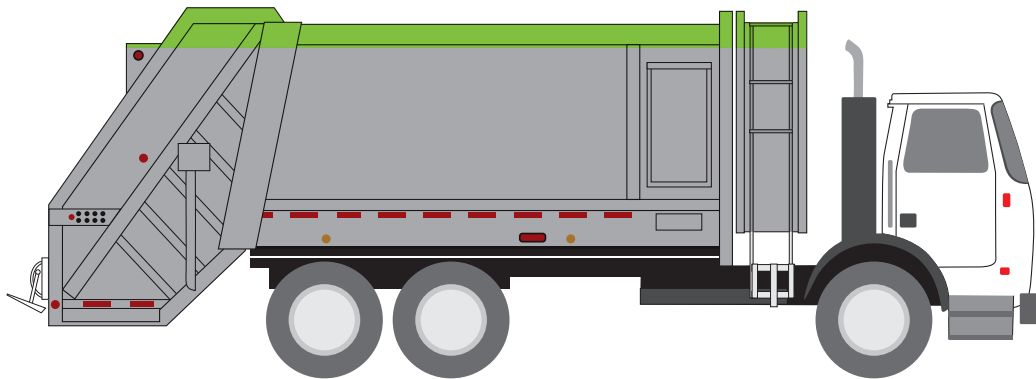
# of enquiries/requests for the division

### Top Citizen requests in our division



1. Missed Collection
2. Other Environmental Services Enquiries
3. Blue Box/Green Cart Request
4. Illegal Dumping Complaint (Public Property)
5. Tipping Fee/Landfill Enquiries

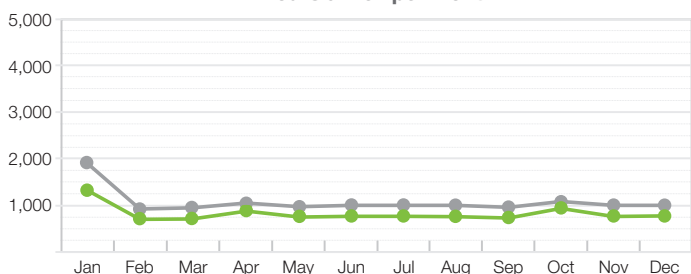
## Residential Waste Collection Garbage and Yard & Leaf Trimmings



**Tonnes of leaf & yard collected – 2,793**  
(all residential crews)

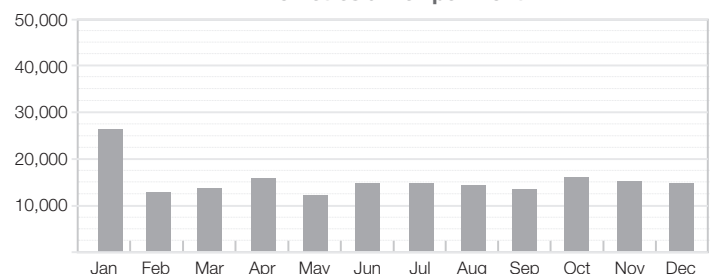
**Tonnes of garbage collected – 15,344**  
(all residential crews)

Hours driven per month

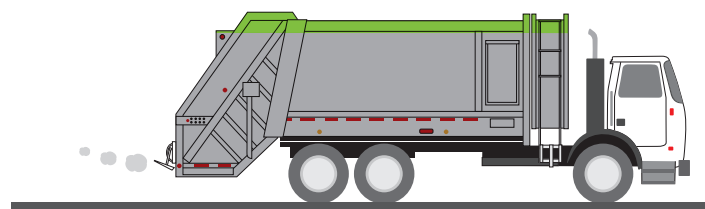


● all garbage/leaf&yard collection vehicles from first house to last  
● all garbage/leaf&yard collection vehicles from yard

Kilometres driven per month



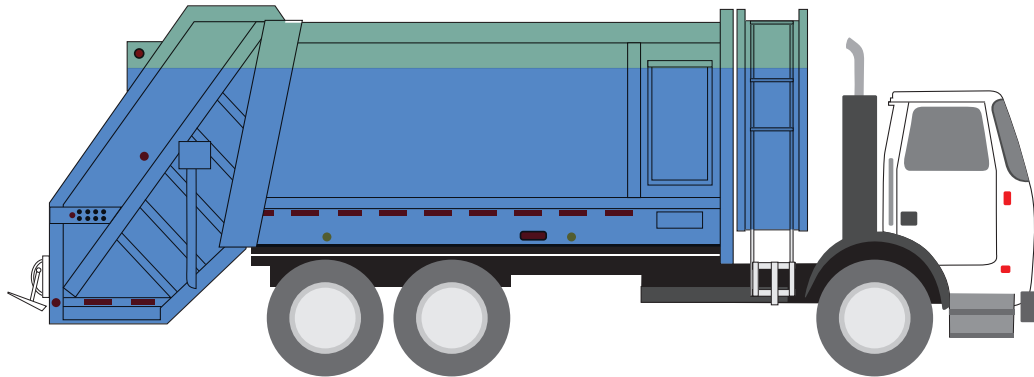
■ all garbage/leaf&yard collection vehicles from yard



**183,433**  
Kilometres driven  
(for all garbage/leaf&yard collection vehicles from yard)

**92**  
# of occurrences of collection past 4:30 pm  
(garbage/leaf&yard collection vehicles)

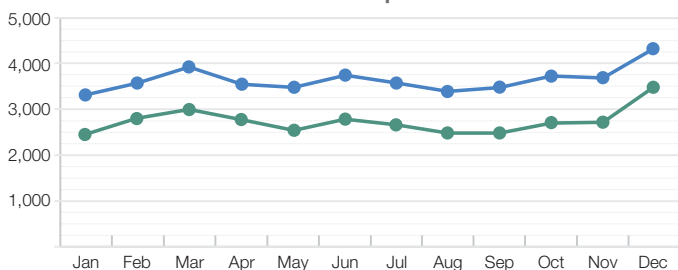
## Residential Collection Blue Box Recycling and Organics



**Tonnes of organics collected – 4,960**  
*(all residential crews)*

**Tonnes of recycling collected – 10,688**  
*(all residential crews)*

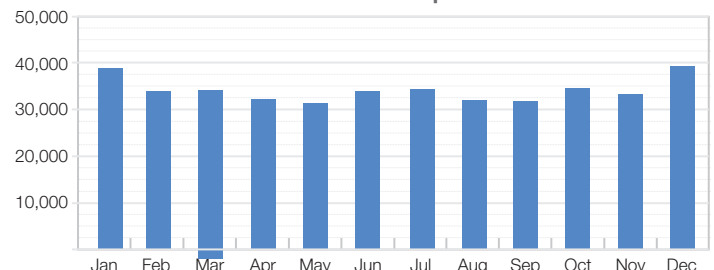
Hours driven per month



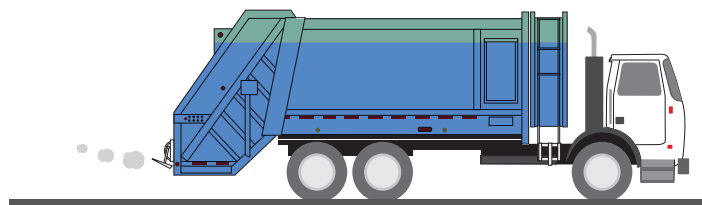
all recycling/organics collection vehicles from first house to last

all recycling/organics collection vehicles from yard

Kilometres driven per month



all recycling/organics collection vehicles from yard



**409,129**

Kilometres driven  
*(for all recycling/organics collection vehicles from yard)*

**450**

# of occurrences of collection past 4:30 pm  
*(for all recycling/organics collection vehicles from yard)*

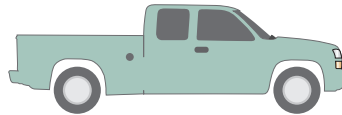
## Azilda Landfill



**15,887**  
Waste Received  
(Tonnes)



**14,133**  
Waste Landfilled  
(Tonnes)



**59,110**  
# of trips to landfill site



**3**  
# of landfill gas probes

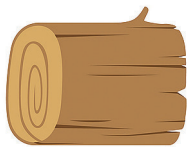


**33**  
# of groundwater wells



**19**  
# of surface water locations

### Compostables



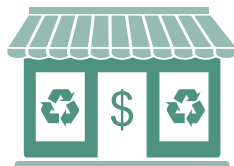
**1,449**  
(Tonnes)



### Reuse



**4**  
Cloth diverted  
(Tonnes)

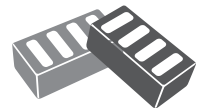


**12**  
diverted at Reuse Store  
(Tonnes)

### Reuse/Recycling



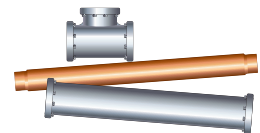
**47**  
Electronic Waste  
(Tonnes)



**156**  
Concrete, Brick and Block  
(Tonnes)



**491**  
Other Wood Waste  
(Tonnes)



**380**  
Scrap Metal and White Goods  
(Tonnes)



**73**  
Tires  
(Tonnes)

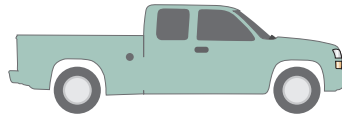
## Sudbury Landfill



**85,959**  
Waste Received  
(Tonnes)



**65,897**  
Waste Landfilled  
(Tonnes)



**164,421**  
# of trips to landfill site



**4**  
# of landfill gas probes

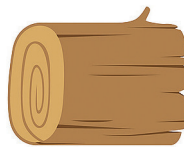


**22**  
# of groundwater wells



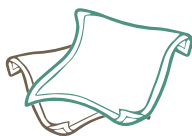
**21**  
# of surfacewater locations

### Compostables

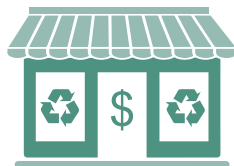


**10,227**  
(Tonnes)

### Reuse



**5**  
Cloth diverted  
(Tonnes)



**16**  
diverted at Reuse Store  
(Tonnes)

### Reuse/Recycling



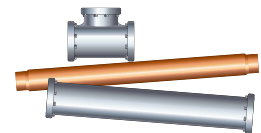
**176**  
Electronic Waste  
(Tonnes)



**519**  
Concrete, Brick and Block  
(Tonnes)



**1,976**  
Other Wood Waste  
(Tonnes)



**579**  
Scrap Metal and White Goods  
(Tonnes)



**134**  
Tires  
(Tonnes)



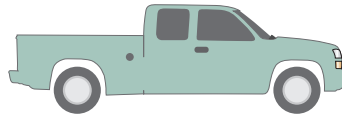
## Hanmer Landfill



**14,878**  
Waste Received  
(Tonnes)



**13,261**  
Waste Landfilled  
(Tonnes)



**75,795**  
# of trips to landfill site



**0**  
# of landfill gas probes

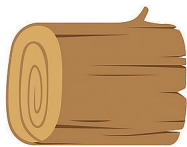


**32**  
# of groundwater wells



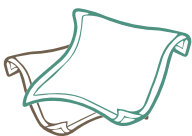
**6**  
# of surfacewater locations

### Compostables



**2,217**  
(Tonnes)

### Reuse

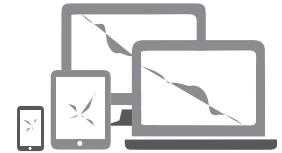


**3**  
Cloth diverted  
(Tonnes)

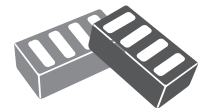


**18**  
diverted at Reuse Store  
(Tonnes)

### Reuse/Recycling



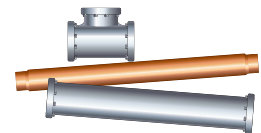
**45**  
Electronic Waste  
(Tonnes)



**238**  
Concrete, Brick and Block  
(Tonnes)



**550**  
Other Wood Waste  
(Tonnes)

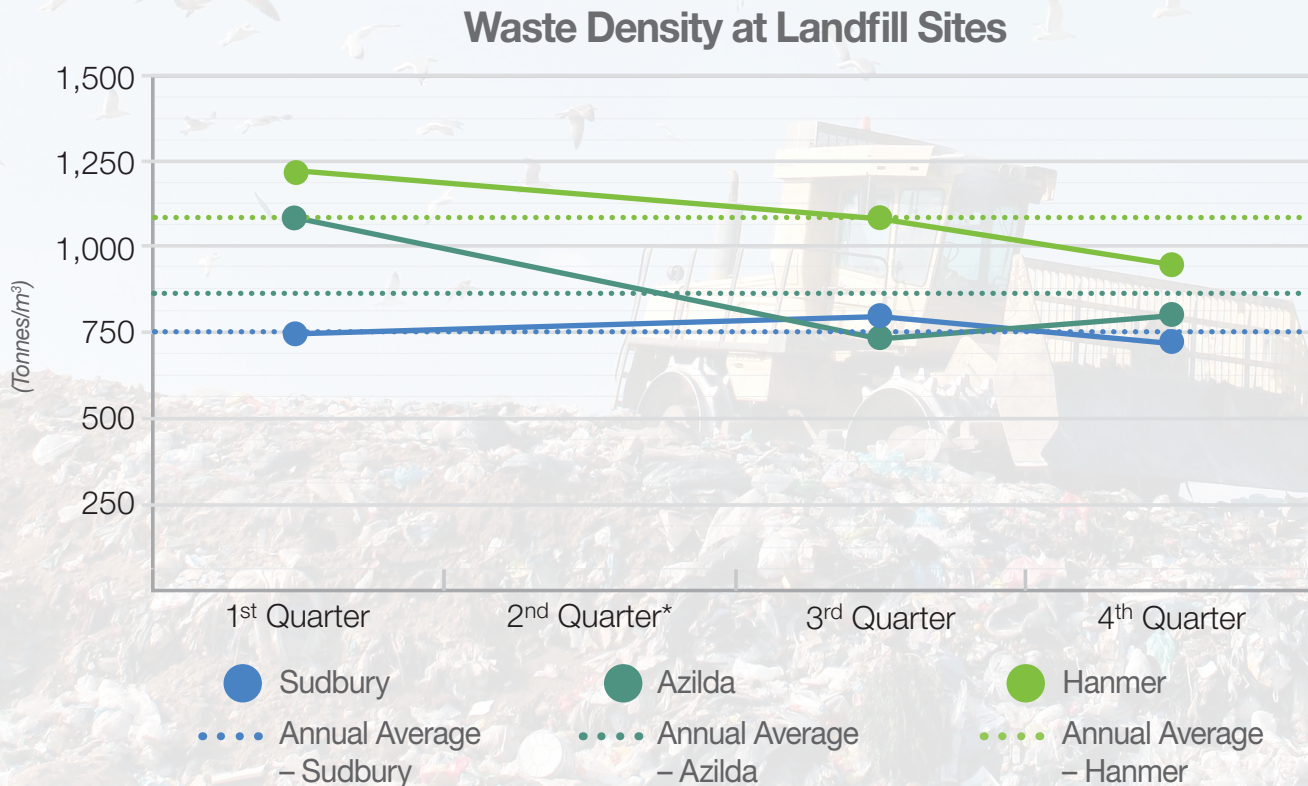


**332**  
Scrap Metal and White Goods  
(Tonnes)



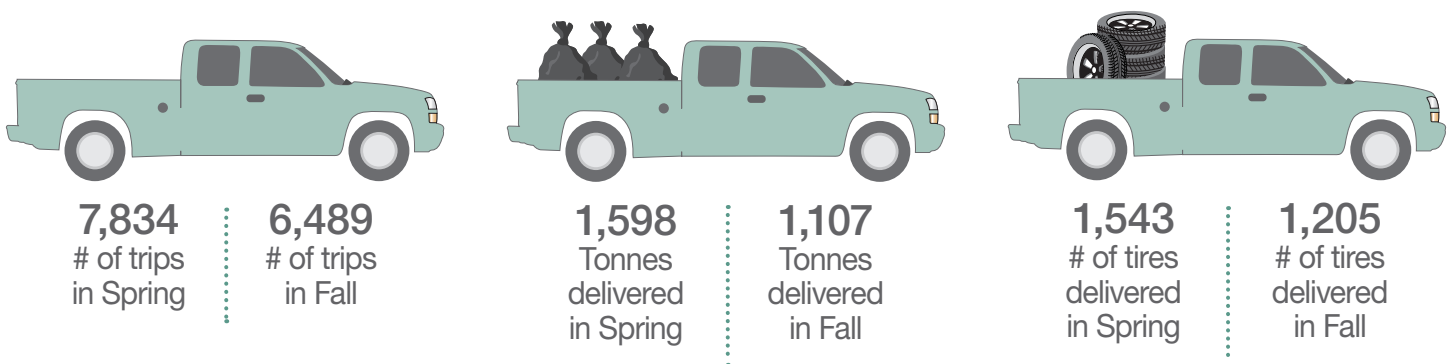
**79**  
Tires  
(Tonnes)

## Landfill Quarterly Waste Density Data



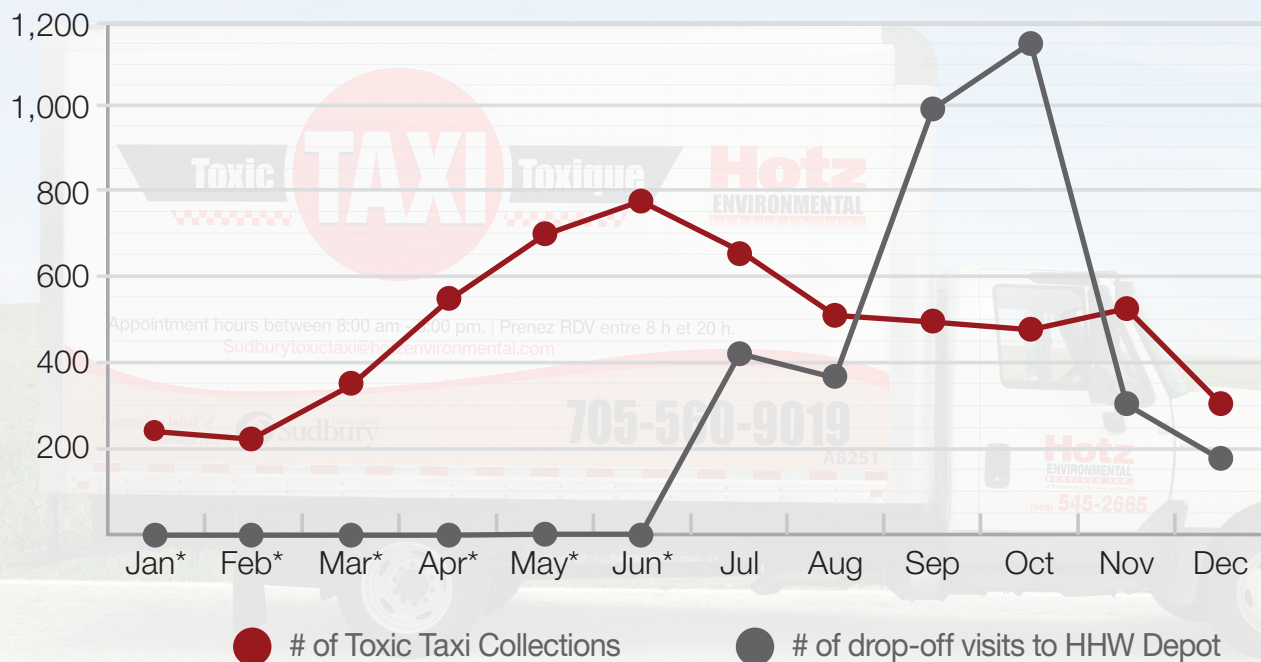
\* Note: Contract change-over occurred, waste density not complete

## Residential Tipping Fee Holiday Weeks



## Household Hazardous Waste (HHW)

### Collection/Drop-off Visits



\*Household Hazardous Waste Depot closed due to COVID-19

## Tonnages Managed



**65**  
HHW Disposed  
(Tonnes)



**187**  
HHW Recycled  
(Tonnes)

**110**  
HHW Reused  
(Tonnes)