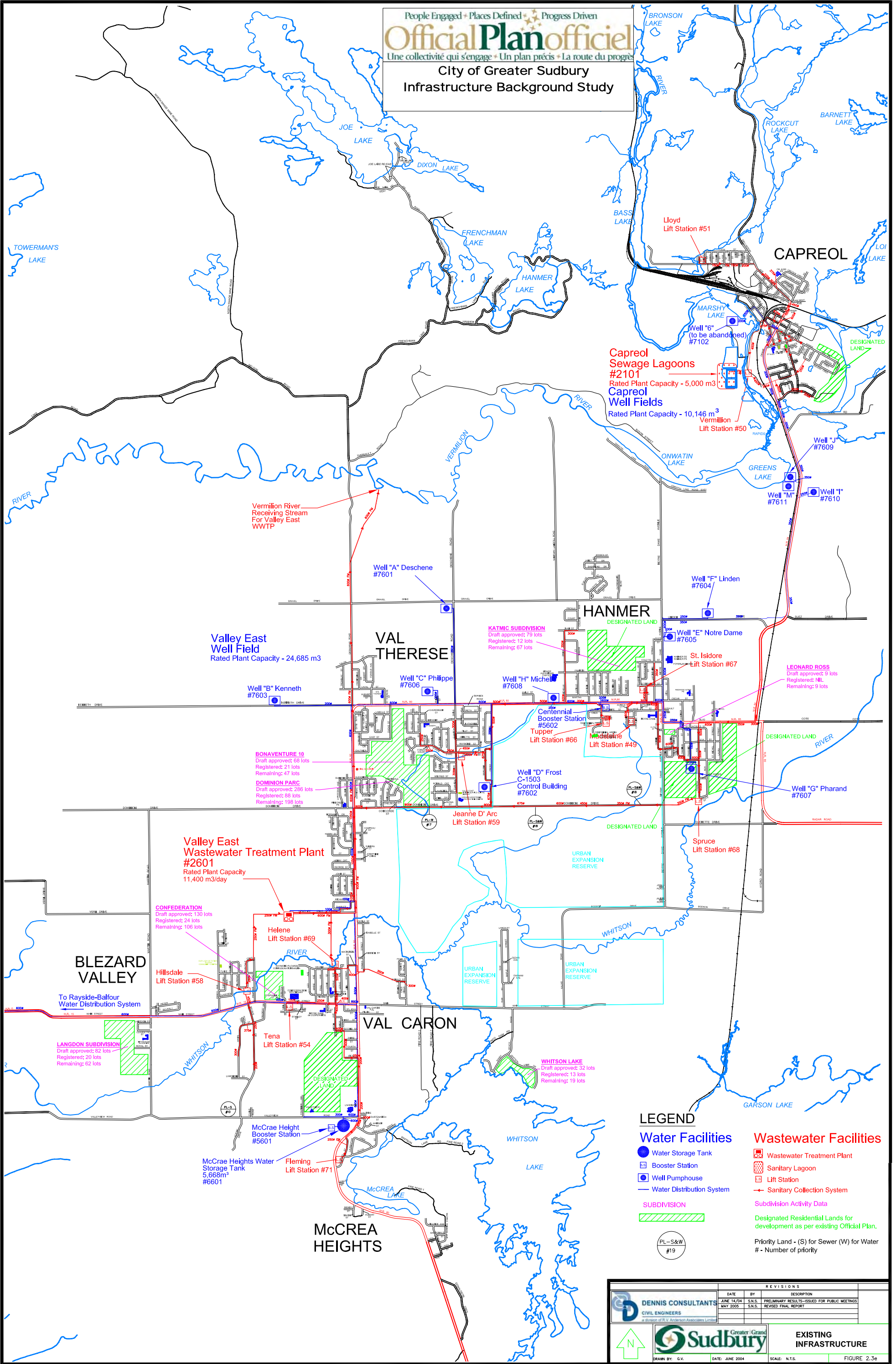
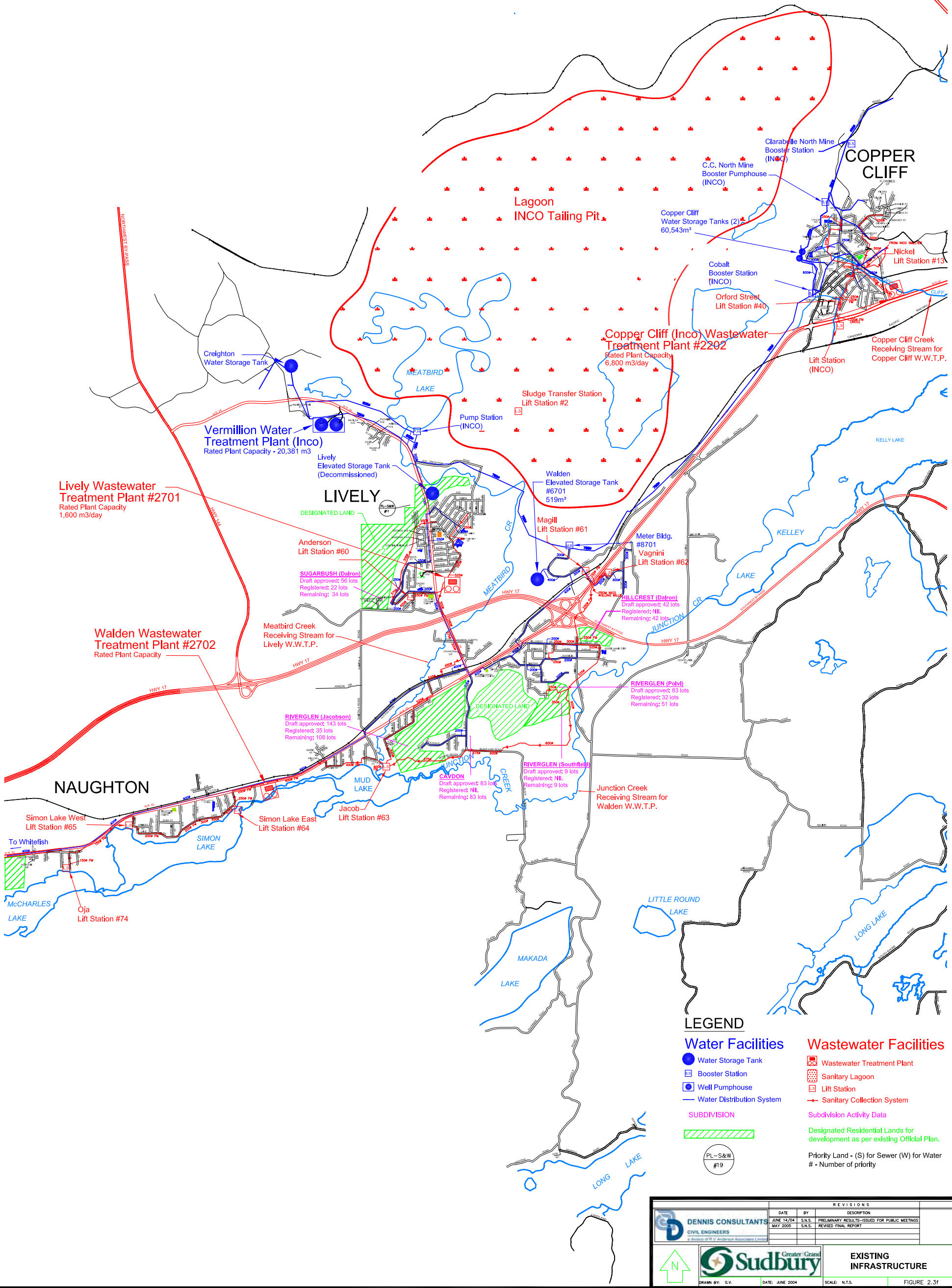


People Engaged • Places Defined • Progress Driven  
**Official Plan officiel**  
Une collectivité qui s'engage • Un plan précis • La route du progrès  
**City of Greater Sudbury**  
**Infrastructure Background Study**





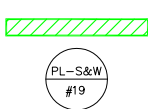


**LEGEND**

**Water Facilities**

- Water Storage Tank
- Booster Station
- Well Pumphouse
- Water Distribution System

**SUBDIVISION**



**Wastewater Facilities**

- Wastewater Treatment Plant
- Sanitary Lagoon
- Lift Station
- Sanitary Collection System

Subdivision Activity Data  
Designated Residential Lands for development as per existing Official Plan.  
Priority Land - (S) for Sewer (W) for Water  
# - Number of priority

DATE	BY	REVISIONS	
		DESCRIPTION	
JUNE 14/04	S.N.S.	PRELIMINARY RESULTS - ISSUED FOR PUBLIC MEETINGS	
MAY 2005	S.N.S.	REVISED FINAL REPORT	
DENNIS CONSULTANTS CIVIL ENGINEERS A Division of D.V. Stoddart Associates Limited		Greater Sudbury EXISTING INFRASTRUCTURE	
DRAWN BY: G.V.		DATE: JUNE 2004	SCALE: N.T.S.
		FIGURE 2.3f	

People Engaged • Places Defined • Progress Driven  
**Official Plan**  
Une collectivité qui s'engage • Un plan précis • La route du progrès  
**City of Greater Sudbury**  
**Infrastructure Background Study**

# CHELMSFORD

## LEGEND

### Water Facilities

- Water Storage Tank
- Booster Station
- Well Pumphouse
- Water Distribution System

SUBDIVISION

PL-S&W #19

### Wastewater Facilities



- Wastewater Treatment Plant
- Sanitary Lagoon
- Lift Station
- Sanitary Collection System

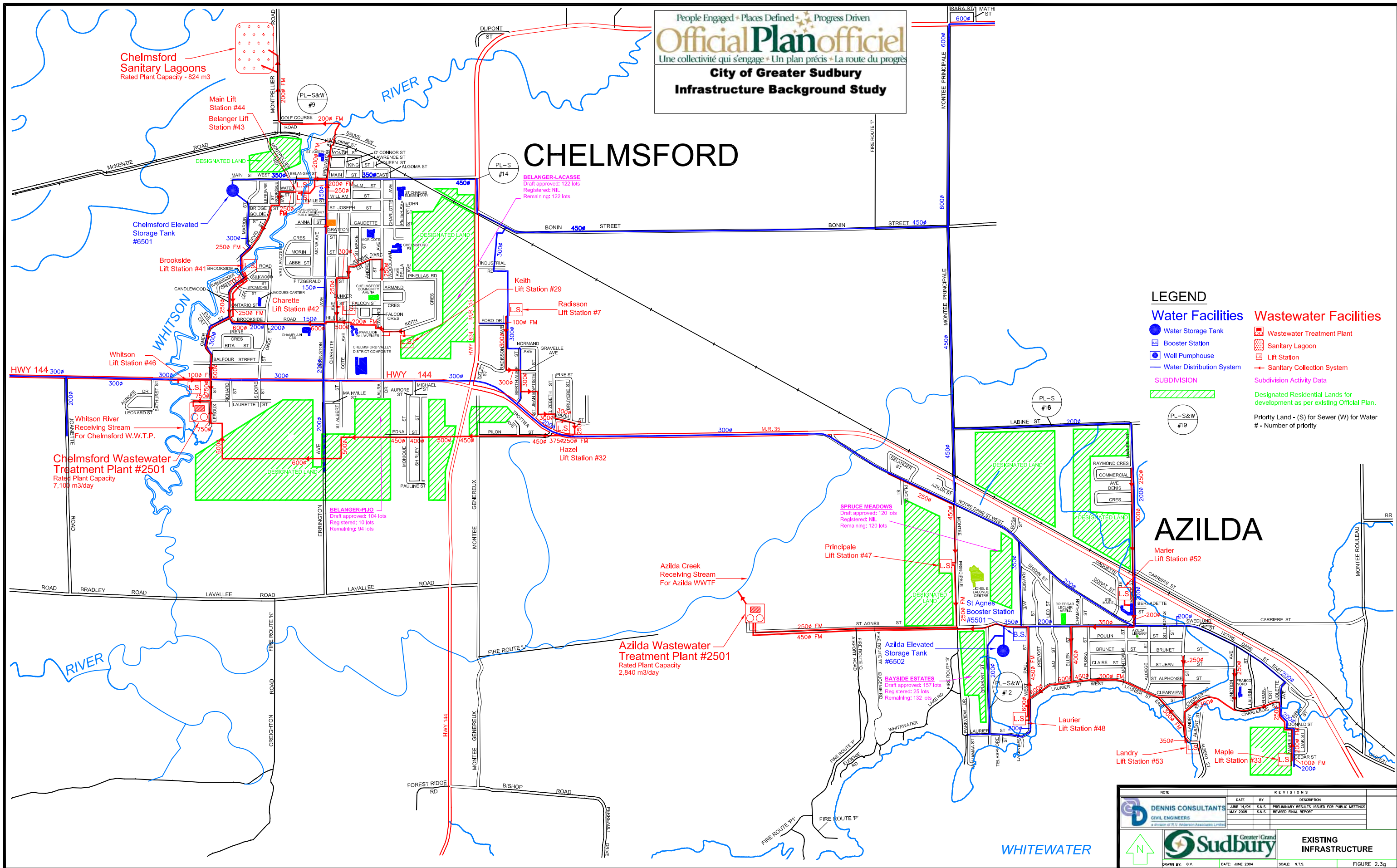
Subdivision Activity Data

Designated Residential Lands for development as per existing Official Plan.

Priority Land - (S) for Sewer (W) for Water  
# - Number of priority

# AZILDA

NOTE		REVISIONS	
 Dennis Consultants Civil Engineers a Division of R.V. Anderson Associates Limited	DATE	BY	DESCRIPTION
	JUNE 14/04	S.N.S.	PRELIMINARY RESULTS-ISSUED FOR PUBLIC MEETINGS
	MAY 2005	S.N.S.	REVISED FINAL REPORT
 Greater Sudbury		EXISTING INFRASTRUCTURE	
DRAWN BY: G.V.		DATE: JUNE 2004	
		SCALE: N.T.S.	
		FIGURE 2.3g	





City of Greater Sudbury  
Infrastructure Background Study

**NOTE:**

City Purchase Potable  
Water from Inco  
Qty: 22727m<sup>3</sup> (max.)

Levack  
New Well Fields  
Rated Plant Capacity - 3,110 m<sup>3</sup>

Deep Well #3  
INCO  
Deep Wells #1&2  
INCO

Levack Wastewater  
Treatment Plant #2401  
Rated Plant Capacity  
2,270 m<sup>3</sup>/day

Onaping River Receiving  
Stream for Levack W.W.T.P.  
Pump House

LEVACK

**NOTE:**

City Purchase Potable  
Water from Falconbridge  
Qty: 22537m<sup>3</sup> (max.)

Onaping (Falconbridge)  
Well Field  
Rated Plant Capacity - 6,540 m<sup>3</sup>

Onaping Water Tank  
(Falconbridge)  
1155m<sup>3</sup>

Fraser  
Lift Station #45  
Pert. #3401

ONAPING

DOWLING

Dowling Wastewater  
Treatment Plant #2404  
Rated Plant Capacity  
3,200 m<sup>3</sup>/day

Lionel  
Lift Station #70

Onaping River Receiving  
Stream for Dowling W.W.T.P.

Dowling Well Field  
Rated Plant Capacity - 7,274m<sup>3</sup>

Lionel Well  
#7401

Riverside Well  
#7402

Dowling Elevated Storage Tank  
#6401 (1391m<sup>3</sup>)

**LEGEND**

**Water Facilities**

- Water Storage Tank
- Booster Station
- Well / Pumphouse
- Water Distribution System

**SUBDIVISION**



PL-S&W  
#19

**Wastewater Facilities**

- Wastewater Treatment Plant
- Sanitary Lagoon
- Lift Station
- Sanitary Collection System

**Subdivision Activity Data**

Designated Residential Lands for  
development as per existing Official Plan.  
Priority Land - (S) for Sewer (W) for Water  
# - Number of priority

NOTE		REVISIONS	
 DENNIS CONSULTANTS CIVIL ENGINEERS <small>a division of R.V. Anderson Associates Limited</small>	DATE	BY	DESCRIPTION
	JUNE 14/04	S.N.S.	PRELIMINARY RESULTS-ISSUED FOR PUBLIC MEETINGS
	MAY 2005	S.N.S.	REVISED FINAL REPORT
		EXISTING INFRASTRUCTURE	
DRAWN BY: G.V.	DATE: JUNE 2004	SCALE: N.T.S.	FIGURE 2.3h