





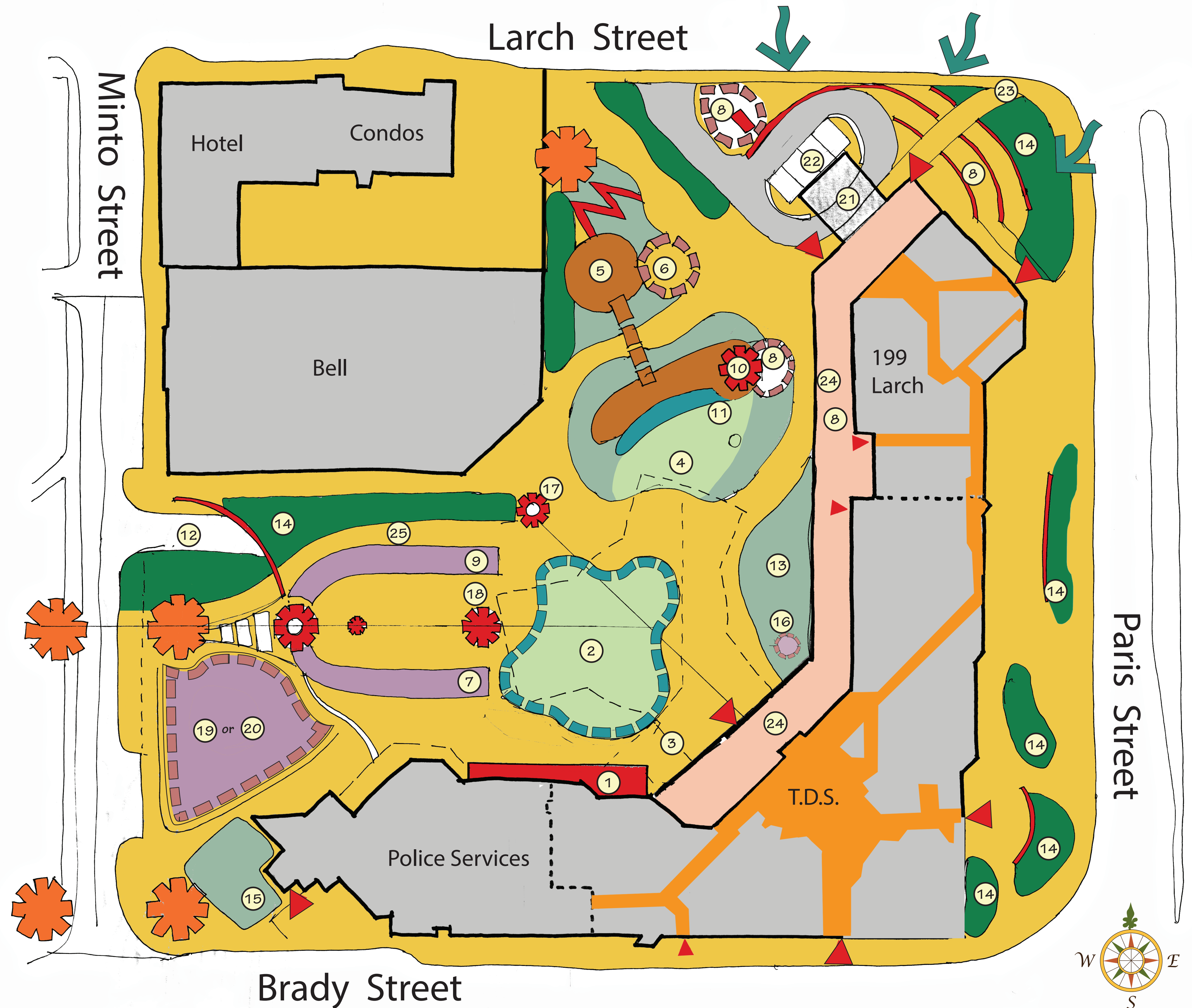


LEGEND

- | | | | |
|---|---------------------------------------|---|-----------------------------------|
|  | Entry Feature/Gateway |  | Primary Access/Egress |
|  | Pedestrian/Light Service Hard Surface |  | Northern Forest Thematic Planting |
|  | Green/Open Space/Planting Area |  | Internal Circulation |

- | | |
|---|---|
| <p>1 Proposed accessible ramp to rooftop amenity areas/redesigned stairs oriented into central plaza.</p> <p>2 Multi-purpose plaza area (old fountain removed)</p> <ul style="list-style-type: none"> • 5 Flags • Rink and or winter cinema • Shallow reflecting pond (quick drain converts to open space) • Projection mapping surface <p>3 Arabesque Triad Tent (rental)</p> <ul style="list-style-type: none"> • 3000 people standing capacity • 1500-2000 seating capacity • Concerts, conferences, weddings, festivals • Flexible layout configuration for smaller events <p>4 Interactive water feature area</p> <ul style="list-style-type: none"> • Sustainable low /energy design • Interpretive theme development opportunity • Incorporate seating/fire/water/ice theme • Play opportunity <p>5 Silver maples on berms</p> <ul style="list-style-type: none"> • Majority of trees saved as featured asset • Introduce new maple plantings for future shade • Low impact decking areas with seating /lighting on top of berms. • Connect berms the accessible bridge <p>6 Play space opportunity.</p> <p>7 Accessible ramp</p> <p>8 Interpretive feature/functional art</p> <ul style="list-style-type: none"> • Sudbury History/ First Nations/ Municipality/ Junction Creek storylines. <p>9 Community celebration space</p> <ul style="list-style-type: none"> • First nations and multicultural theme opportunity • Outdoor kitchen to facilitate special events/programming • Shade/hot spot structure create intimate place • Movable fire pit • Transitional stairs to Memorial Park axis walkway <p>10 Multi purpose warming house/public washroom</p> <ul style="list-style-type: none"> • Integrate over parking garage stairwell. | <p>11 Retaining wall/play feature integrated into south facing slope oriented into central plaza.</p> <p>12 Parking garage entry upgrades</p> <ul style="list-style-type: none"> • Thematic artwork on façade • LED lighting and surfacing upgrade of pedestrian corridor/wall treatment <p>13 Existing raised planter area</p> <ul style="list-style-type: none"> • Reconfigure planting with raised planters and movable seating. <p>14 Thematic planting opportunity/screening/buffering</p> <ul style="list-style-type: none"> • North wind control/responsive design <p>15 Sculpture /thematic planting opportunity</p> <p>16 Tom Davies plaque</p> <p>17 AV / Projection mapping tower</p> <ul style="list-style-type: none"> • Build as roof structure over refurbished garage stairwell to provide weather protection. <p>17 Ceremonial Christmas tree</p> <p>18 Walk of fame</p> <p>19 Community garden/food production</p> <p>20 Skate/BMX Park</p> <p>21 Porte-cochere</p> <p>22 Accessible parking</p> <ul style="list-style-type: none"> • At grade with plaza floor elevation • Minimal impact on Larch St (a new driveway) <p>23 New stairs create opportunity to address north wind issue</p> <p>24 One story atrium structure</p> <ul style="list-style-type: none"> • Establishes accessible "front door" • Address north wind issue • Art and historic display and interpretive opportunity • Special event program space • 4 season staff/public amenity space <p>25 Realigned walkway to Memorial Park</p> |
|---|---|



Tom Davies Square Courtyard Redesign

Preliminary Schematic Plan: Option C

Feb. 2016

ARCHITECTURE | 49

