



Ontario

**Ministry of Children
and Youth Services**



**City of Greater Sudbury
Children Services**

CGS - Best Start Child Care Plan

October 27, 2005



Why should we do this now?

- Provincially and Federally:
 - G a renewed commitment to Early education.
- Proactive Long Term Action:
 - G an opportunity for local government to support their youngest citizens.
- First time that 100% child care initiative funding is left to be managed at the local level.

What the Experts say...

- A key strategy for improving the capabilities for innovation of the next generation of citizens is to make early child development a priority of the public and private sectors of society. Mustard, Mc Cain 1999
- High Scope Perry Preschool Study found that adults at age 40 who participated in high quality early care and education program at ages three and four were most likely to graduate from high school, hold a job and have committed no / fewer crimes. A return to society of more than \$17 for every tax dollar invested in the early care and education programs. Schwinhart 2004

What is the Best Start Vision ?

■ A massive redesign of services

- P School First Policy for expansions
- P Focus on children's readiness to learn
- P Success by Grade 1, leading to success in high school and success in adulthood
- P Explicit links to other children services
- P Early identification and screening

■ Concepts:

- P Early Learning, Early Identification and Early Intervention

■ Long Term Goal:

- P Move child care from a support to families to an early learning and care support.

Does it fit Council's direction?

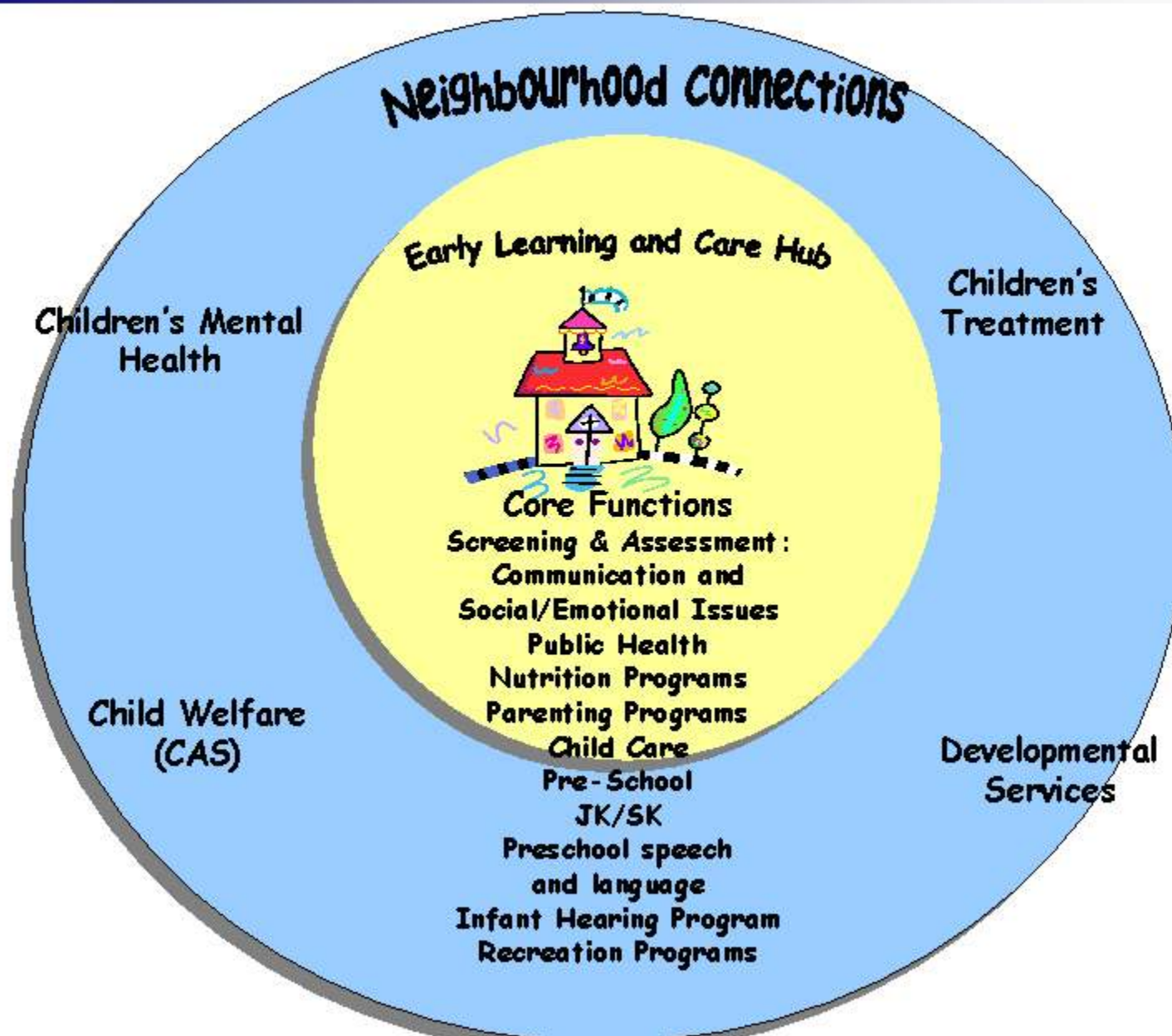
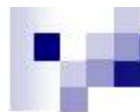
■ *Prioritizing Actions for Greater Sudbury's Growth and Prosperity - 2003:*

- Key determinants of health are education levels
- Need to increase High School Graduates rates
 - P Sudbury 2001 - 19% of population without high school diploma; Ontario @ 17%
 - P 70 % of the City's OW caseload have less than grade12

■ *Healthy Community Strategy- 2005:*

- Foster an environment that promotes learning

■ *Children First Charter*



What are the Benefits for Children?

- Social and economic benefits to children and families including:

Increased or Improved rates of

- Performance at School
- Cognitive development
- Readiness to learn
- High School completion rates
- Socially appropriate behavior
- Life long learning potential
- Long term health and well-being
- Employment retention

Key Deliverables of Phase 1

■ Best Start Transition Plan

- Ⓔ Child care expansion and school capital plan

■ Best Start Network - CGS

- Ⓔ Best Start Network and four community groups already established
- Ⓔ Bring key community planning groups together
- Ⓔ Lead process
- Ⓔ Involve parents at all levels

■ Develop an Implementation Plan - Hub Model

- Ⓔ Create integrated early learning and care Hub Model
- Ⓔ Enhance early identification and early intervention programs
- Ⓔ Develop and support universal screening at 18 months
- Ⓔ Full plan to be presented to Council in December

Best Start Funding/Province wide

- Agreement between Province and Canada on Early Learning and Care for next 5 years
- Part of National Children's Agenda
- Funding allocation for 2005 - 2008
 - \$500 M at 100%
 - Implementation will take 10+ years
 - Currently working on Phase I

CGS- Best Start Funding 2005-2006

Fiscal April 1, 2005 to March 31, 2006

■ **Total \$3.2 million** (\$12M over three years 2005-2008)

G **Operating funding \$1.7 million**

G Program funding, wage enhancement, special needs resourcing, fee subsidies, planning funding, administration

G **Capital funding \$1.4 million**

G Funding to develop spaces within the school system, minor renovations, infrastructure improvements

G capital investment in community infrastructure

G **No cost sharing requirements @ 100%**

Phase 1 - Service Priorities

- Implement Activities of Phase 1.
 - Ⓔ Expansion in publicly funded schools
 - Ⓔ Create opportunities for school readiness programs
 - Ⓔ Promote succession planning for Day Care Centres
 - Ⓔ Implement Service Management Strategies as described in Best Start Child Care Plan as presented
- Provide leadership.
- Work with community on co-ordinated planning.
- Increase community awareness & marketing.
- Redefine Children Services administrative delivery model to meet objectives of Best Start.