

# Healthy land Healthy water

All the land that drains into a specific water feature, like a stream or a lake, is called a watershed. The greater the amount of tree cover in a watershed, the healthier the receiving stream or lake. That's because all the vegetation in the watershed helps to soak up and filter the rainwater.

The City will continue to map lake and river watersheds, especially those within the impacted area. Watershed maps will help greatly in determining priority lands for greening.

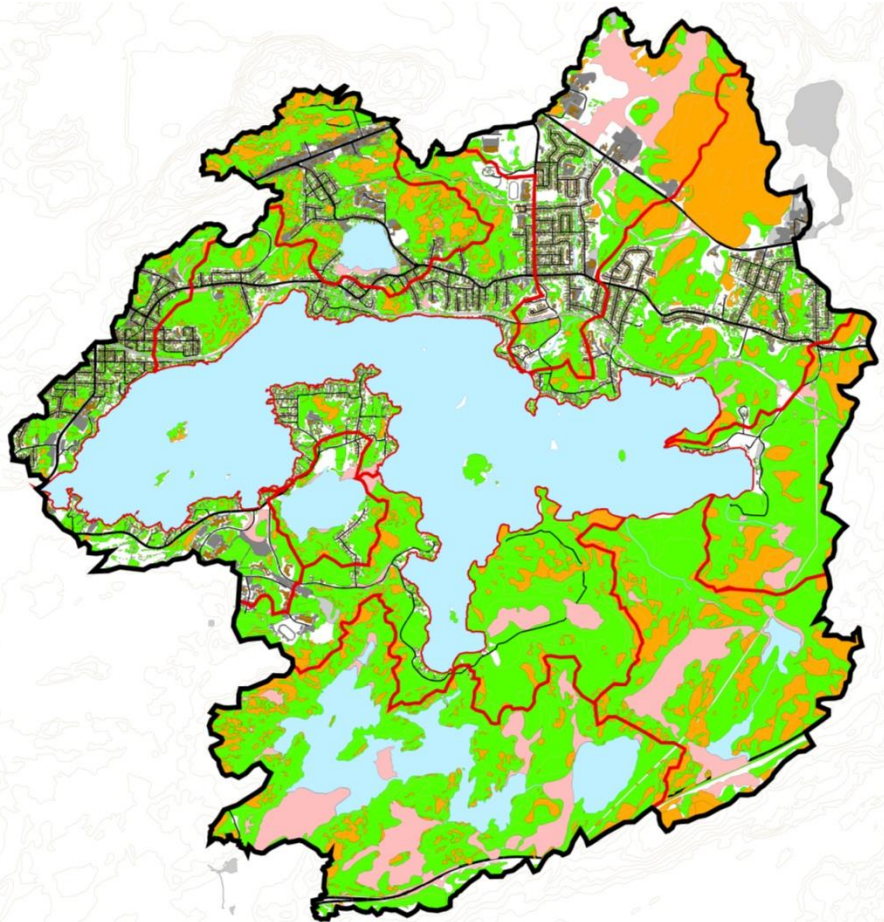
Stormwater runoff is a major factor that determines the quality of streams and lakes in a watershed.

In general, the more pervious or porous surfaces in a watershed the healthier it is. Pervious surfaces, like lawns, forests and wetlands, allow rain to soak in and retain water, delaying its release to the receiving stream or lake. This decreases the likelihood of flooding, keeps water cooler and reduces sediment deposits and contaminants from surface runoff.

Impervious surfaces, like driveways, roads and roofs, have the opposite effects and reduce the health of a watershed.

Regreening barren areas in Greater Sudbury's watersheds will directly benefit streams and lakes.

The Centre for Ecological Monitoring, numerous professors at Laurentian University and local colleges, the Nickel District Conservation Authority and the City's Regreening Program will continue studying and monitoring the ecological recovery of our local watersheds.



**Lake Ramsey Watershed and Subwatersheds**

- |                       |                                    |
|-----------------------|------------------------------------|
| Lake Ramsey Watershed | <b>Man-Made Impervious Surface</b> |
| Subwatershed          | Road                               |
| Surface Water         | Railroad                           |
| Tree Canopy           | Paved Parking                      |
| Wetland               | Building                           |
| Elevation Contour     | Scraped to Bedrock                 |
|                       | <b>Natural Impervious Surface</b>  |
|                       | Bedrock and Sparse Scrubland       |

The types of land cover in a lake's watershed affects its water quality.